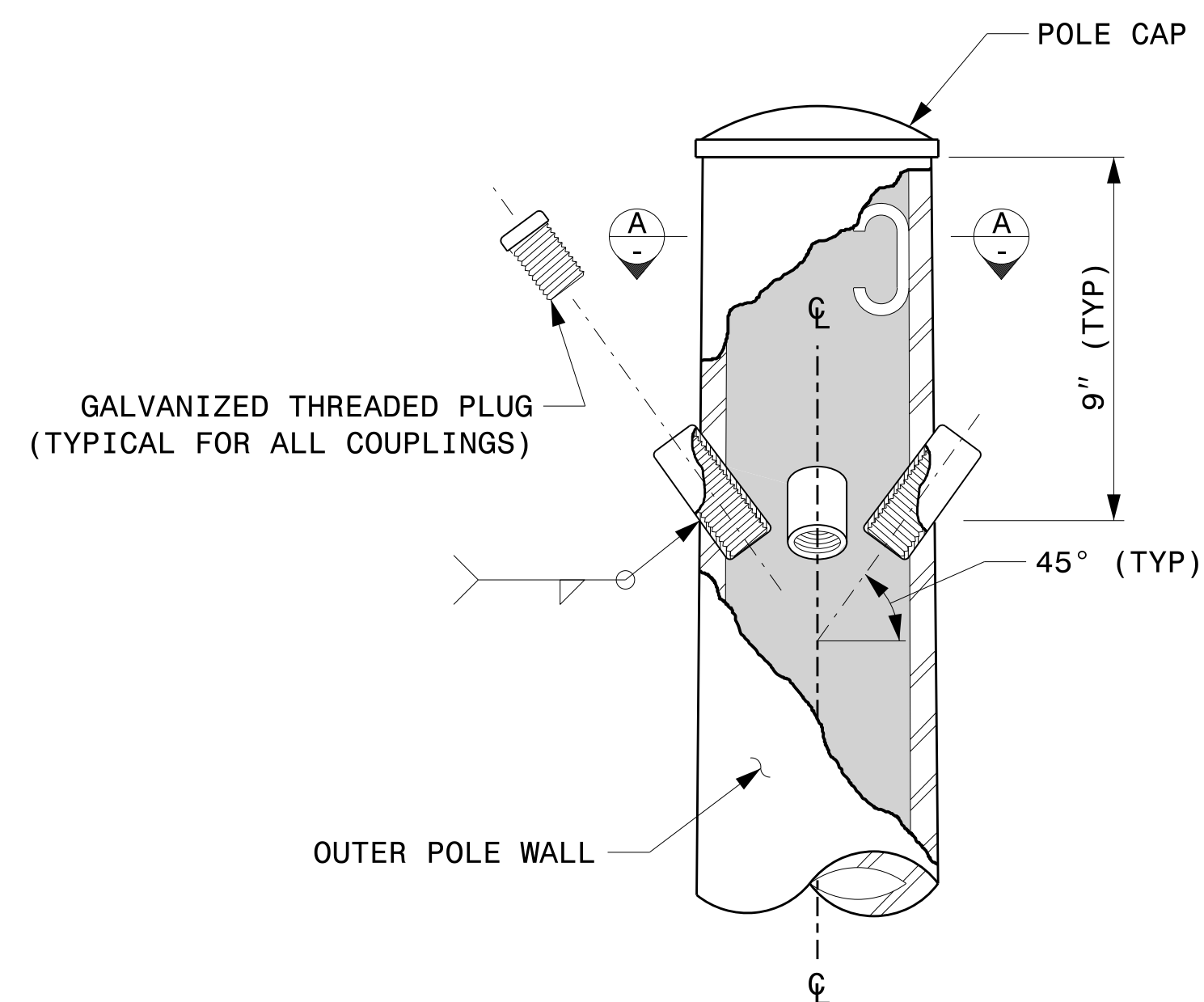
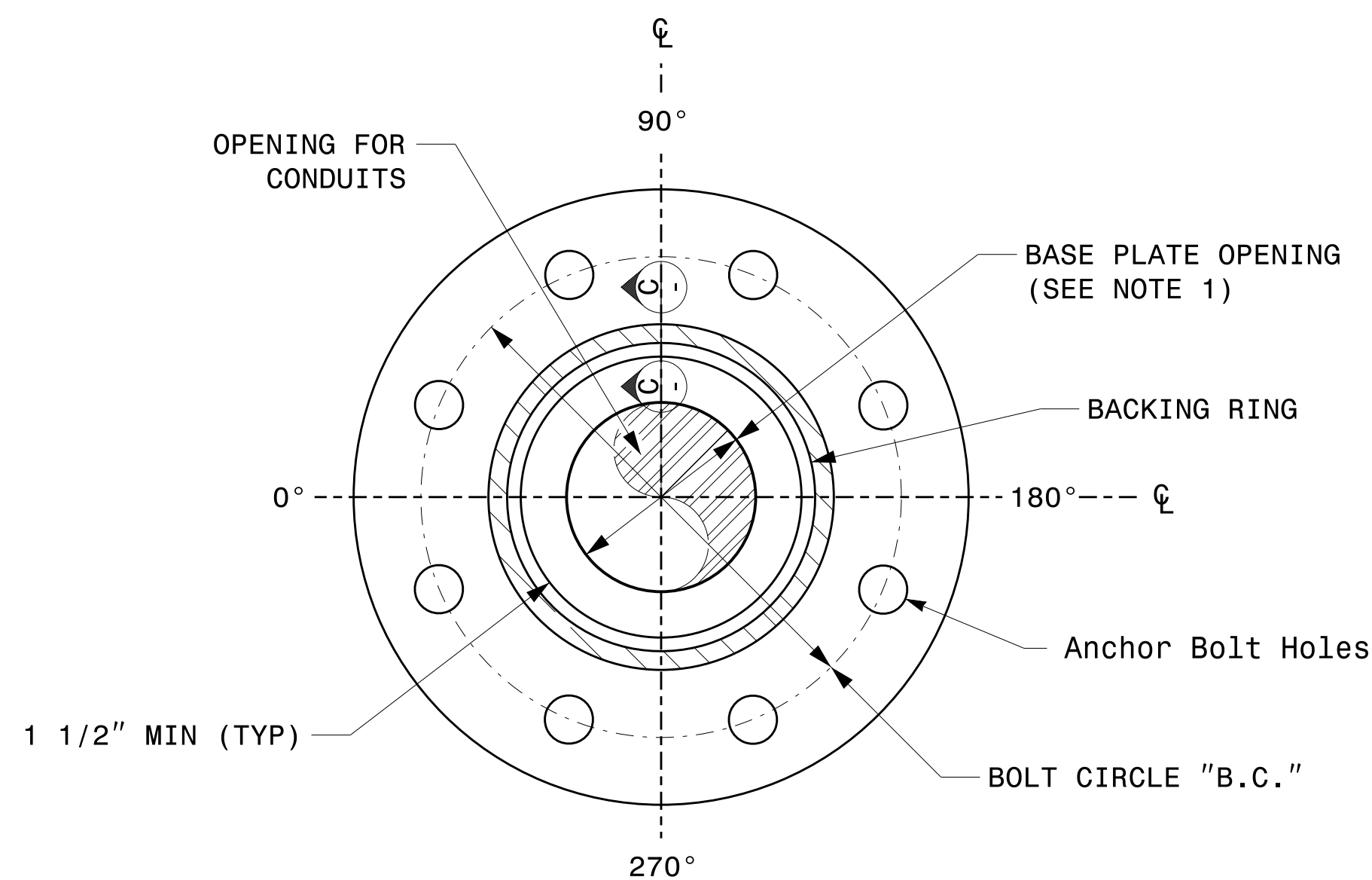


NOTE:

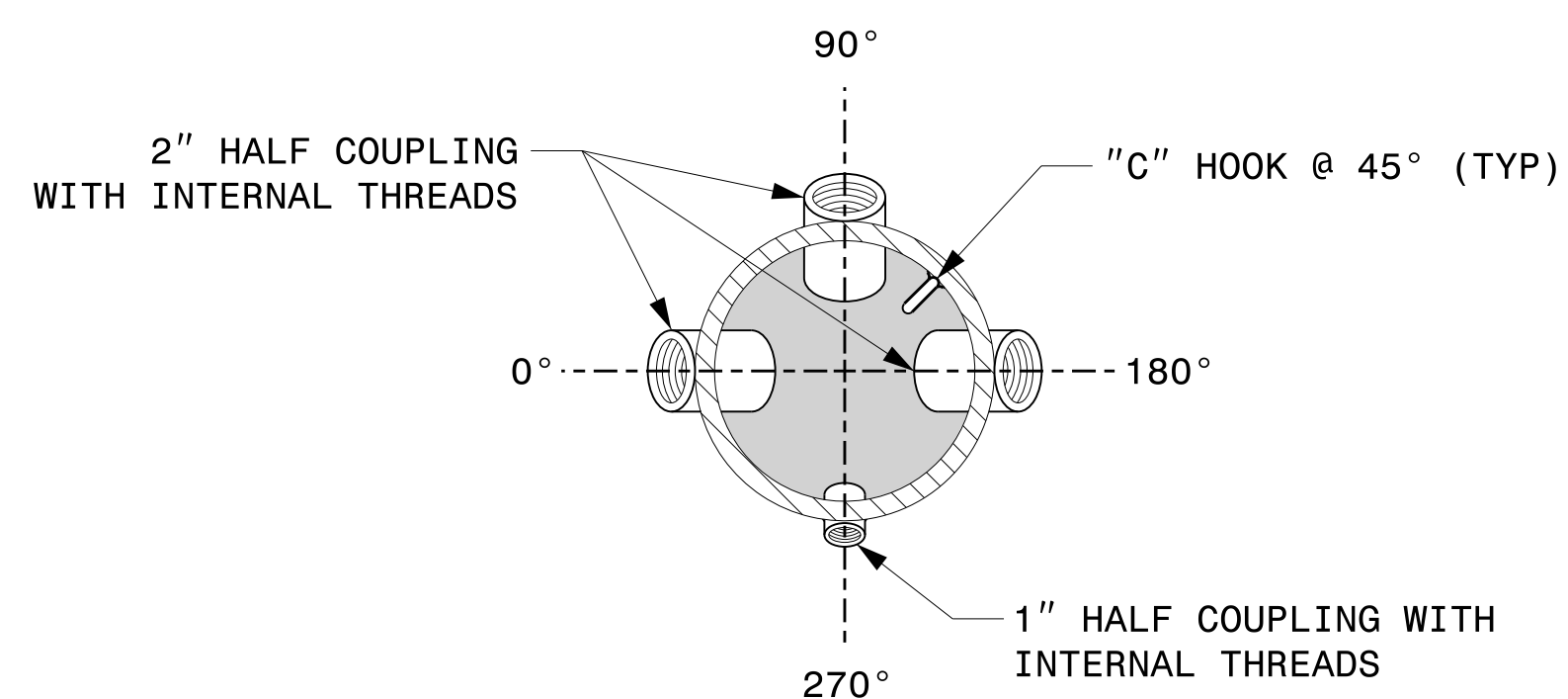
- 1. OPENING IN POLE BASE PLATE SHALL BE EQUAL TO POLE BASE INSIDE DIAMETER MINUS $3\frac{1}{2}$ " BUT SHALL NOT BE LESS THAN $8\frac{1}{2}$ ".



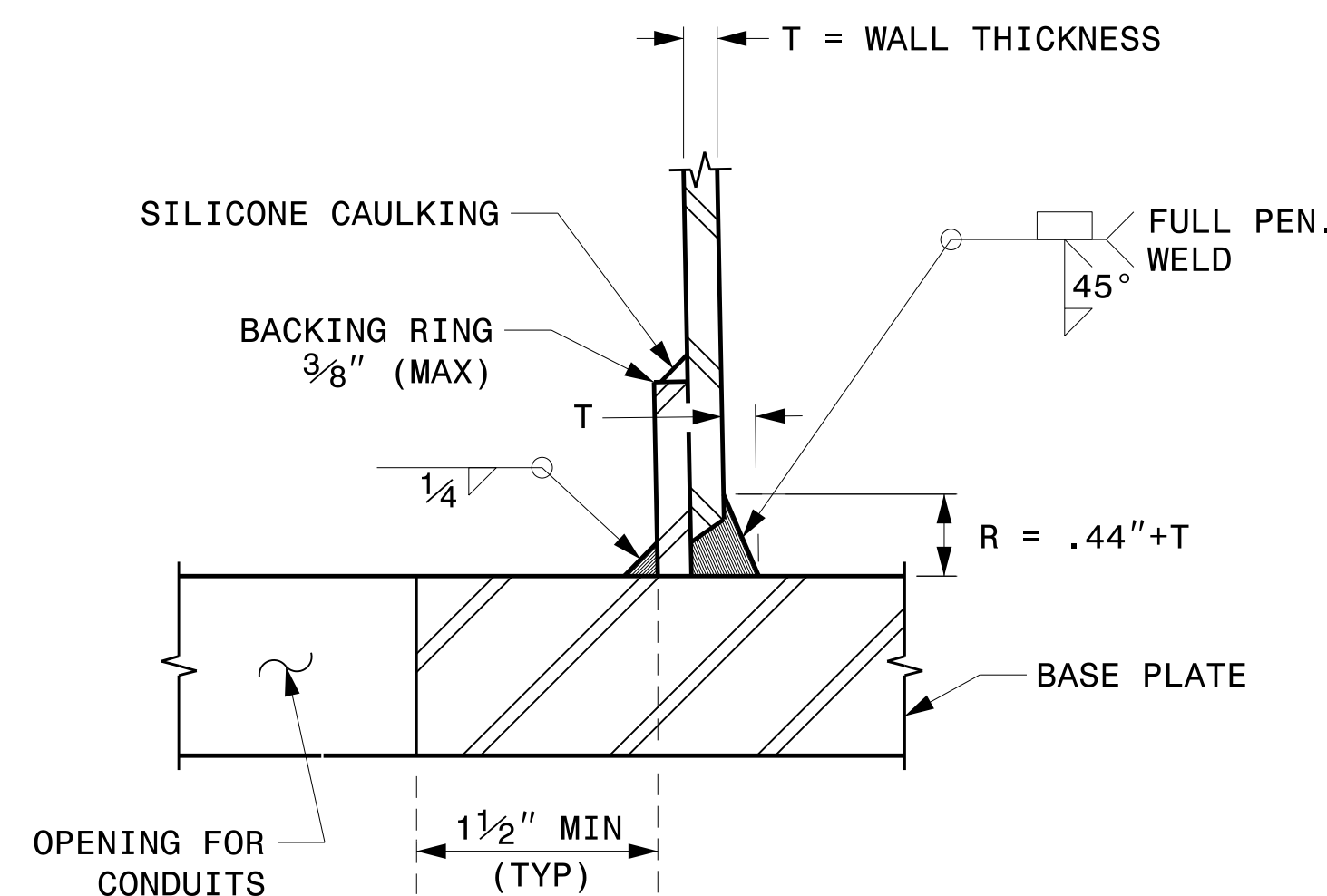
CABLE ENTRANCES AT TOP OF POLE



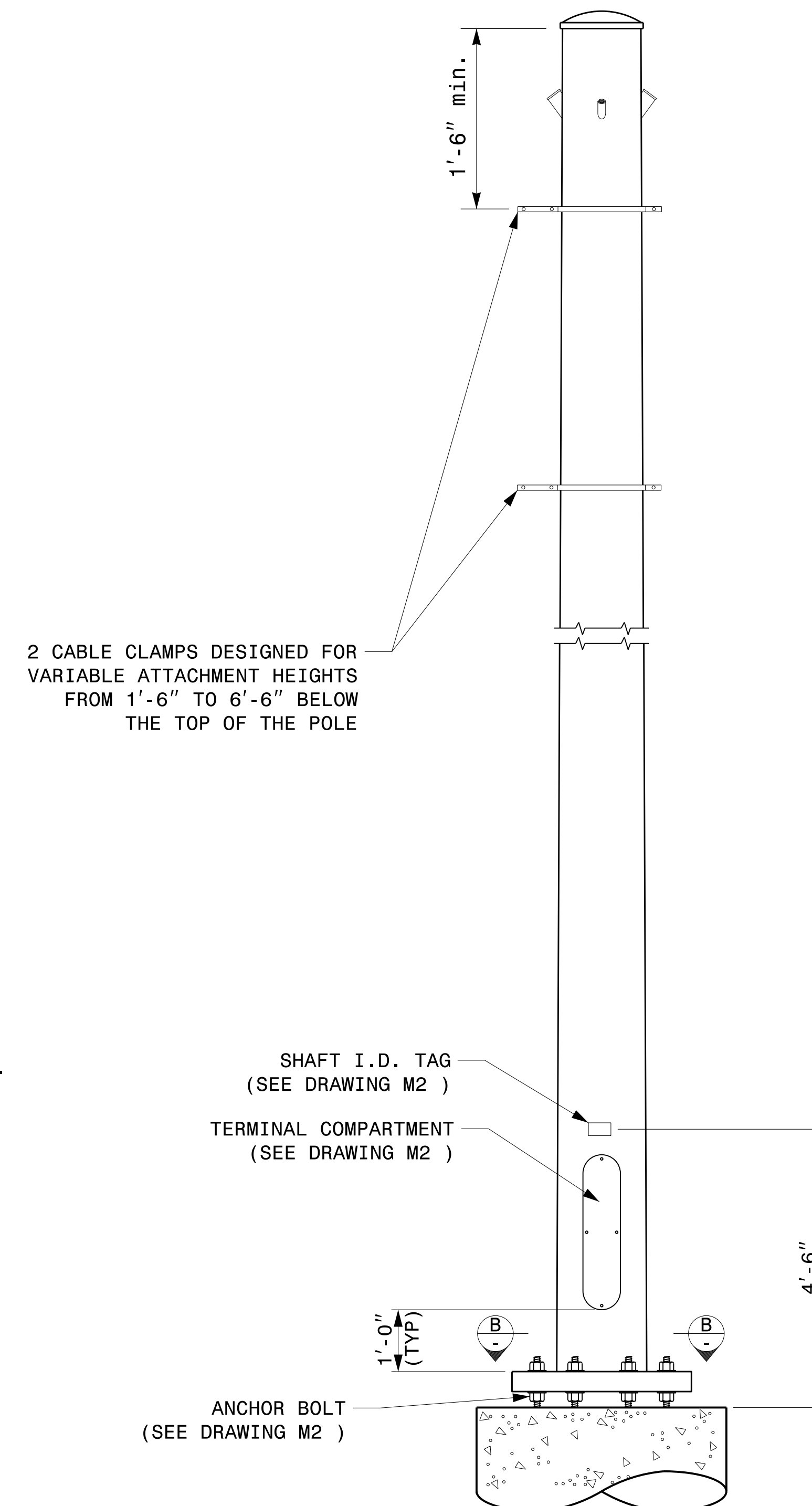
SECTION B-B
POLE BASE PLATE DETAILS
(8 AND 12 BOLT PATTERN)



SECTION A-A
RADIAL ORIENTATION OF FACTORY INSTALLED
ACCESSORIES AT TOP OF POLE



SECTION C-C
(POLE ATTACHMENT TO BASE PLATE)
FULL-PENETRATION
GROOVE WELD DETAIL



2 CABLE CLAMPS DESIGNED FOR
VARIABLE ATTACHMENT HEIGHTS
FROM 1'-6" TO 6'-6" BELOW
THE TOP OF THE POLE

MONOTUBE STRAIN POLE

08-dt-2023 10:37
S:\SSS\415 Signal\Signal Design Section\Structures\Drawings\2024 Merlot Pole Std Drawings for LRF\2024 Sig.M3 Str. Fabrication Details-Strain Poles.dgn
Kedar Tagon

Prepared in the Offices of:

750 N. Greenfield Pkwy, Garner, NC 27529

SCALE: 0 NA NONE

Typical Fabrication Details For Strain Poles	
PLAN DATE: SEPTEMBER 2023	DESIGNED BY: K.C. DURIGON
PREPARED BY: K.C. DURIGON	REVIEWED BY: D.C. SARKAR
REVISIONS	INIT. DATE

SEAL

DocuSigned by:
Kevin Durigon
SIGNATURE

09/23/2023
DATE

4B23DC79B378ADA

Fabrication Details – Strain Poles