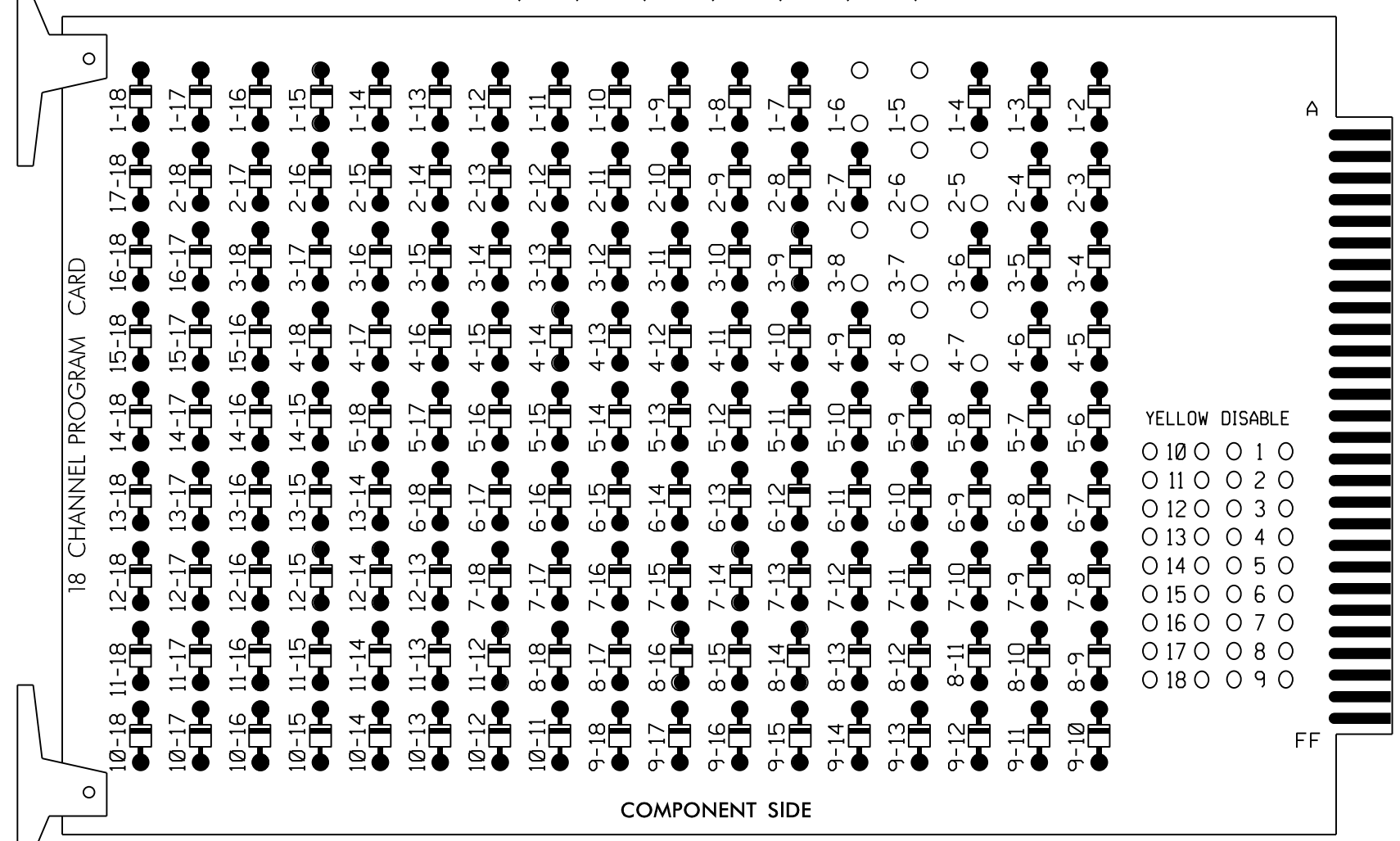


18 CHANNEL IP CONFLICT MONITOR PROGRAMMING DETAIL

(remove jumpers and set switches as shown)

REMOVE DIODE JUMPERS 1-5, 1-6, 2-5, 2-6, 3-7, 3-8, 4-7, and 4-8.



REMOVE JUMPERS AS SHOWN

NOTES:

- Card is provided with all diode jumpers in place. Removal of any jumper allows its channels to run concurrently.
- Ensure jumpers SEL2-SEL5 and SEL9 are present on the monitor board.
- Ensure that Red Enable is active at all times during normal operation.
- Integrate monitor with Ethernet network in cabinet.

NOTES

- To prevent "flash-conflict" problems, insert red flash program blocks for all unused vehicle load switches in the output file. The installer shall verify that signal heads flash in accordance with the Signal Plans.
- Program controller to start up in phase 2 Green and 6 Green.
- If this signal will be managed by an ATMS software, enable controller and detector logging for all detectors used at this location.
- The cabinet and controller are part of the Burlington-Graham Signal System.

EQUIPMENT INFORMATION

CONTROLLER.....2070LX
 CABINET.....332 W/AUX
 SOFTWARE.....ECONOLITE ASC/3-2070
 CABINET MOUNT.....BASE
 OUTPUT FILE POSITIONS...18 WITH AUX. OUTPUT FILE
 LOAD SWITCHES USED.....S1,S2,S4,S5,S7,S8,S10,S11
 PHASES USED.....1,2,3,4,5,6,7,8
 OVERLAP "A".....NOT USED
 OVERLAP "B".....NOT USED
 OVERLAP "C".....NOT USED
 OVERLAP "D".....NOT USED

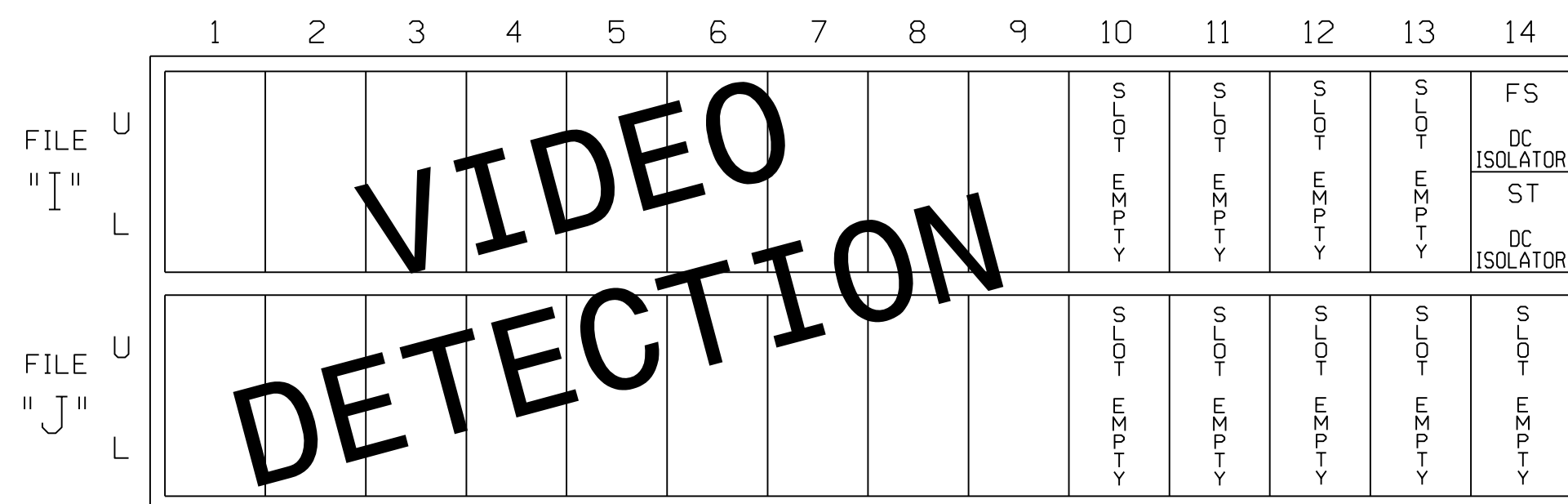
SIGNAL HEAD HOOK-UP CHART

LOAD SWITCH NO.	S1	S2	S3	S4	S5	S6	S7	S8	S9	S10	S11	S12	AUX S1	AUX S2	AUX S3	AUX S4	AUX S5	AUX S6
CMU CHANNEL NO.	1	2	13	3	4	14	5	6	15	7	8	16	9	10	17	11	12	18
PHASE	1	2	2 PED	3	4	4 PED	5	6	6 PED	7	8	8 PED	OLA	OLB	SPARE	OLC	OLD	SPARE
SIGNAL HEAD NO.	11,12	82	21,22	NU	31,32	41,42, 43	NU	51	61,62	NU	71	81,82, 83	NU	NU	NU	NU	NU	NU
RED			128			101			134			107						
YELLOW			129			102			135			108						
GREEN			130			103			136			109						
RED ARROW	125				116			131			122							
YELLOW ARROW	126	126			117			132			123							
GREEN ARROW	127	127			118			133			124							

NU = Not Used

INPUT FILE POSITION LAYOUT

(front view)



EX. : 1A, 2A, ETC. = LOOP NO.'S

FS = FLASH SENSE
 ST = STOP TIME

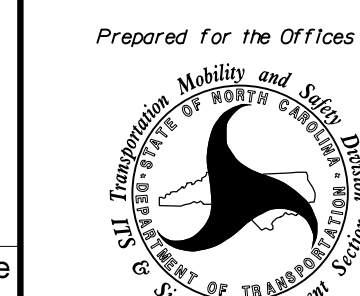
SPECIAL VIDEO DETECTION NOTE

Install a video detection system for vehicle detection. Perform installation in accordance with manufacturer's directions and NCDOT engineer approved mounting locations to accomplish the detection schemes shown on the Signal Plans.

THIS ELECTRICAL DETAIL IS FOR THE SIGNAL DESIGN: 07-0112T1
 DESIGNED: March 2024
 SEALED: 3-7-2024
 REVISED: N/A

Electrical Detail

ELECTRICAL AND PROGRAMMING DETAILS FOR:



US 70 (S. Church Street) at
 SR 1158 (Huffman Mill Road) / Shadowbrook Drive

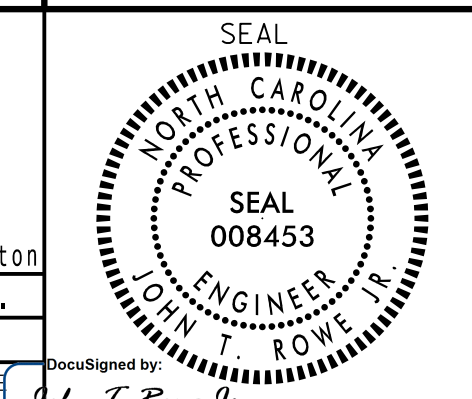
Division 7 Alamance County Burlington

PLAN DATE: March 2024 REVIEWED BY: J.T. Rowe, Jr.

PREPARED BY: J.T. Rowe, Jr. REVIEWED BY:

REVISIONS INIT. DATE

DOCUMENT NOT CONSIDERED FINAL UNLESS ALL SIGNATURES COMPLETED



DocuSigned by: John T. Rowe Jr. 3-7-2024 DATE

SIG. INVENTORY NO. 07-0112T1

TRANSYSTEMS

1 Glenwood Avenue
 Raleigh, NC 27603
 Tel: 919.789.9977
 Fax: 919.789.9591
 License: F-0453

750 N. Greenfield Pkwy, Garner, NC 27529