
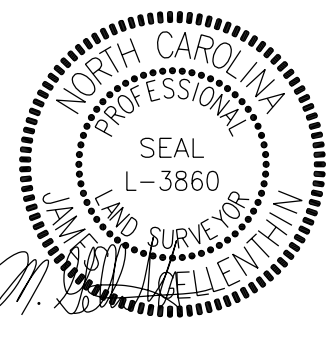
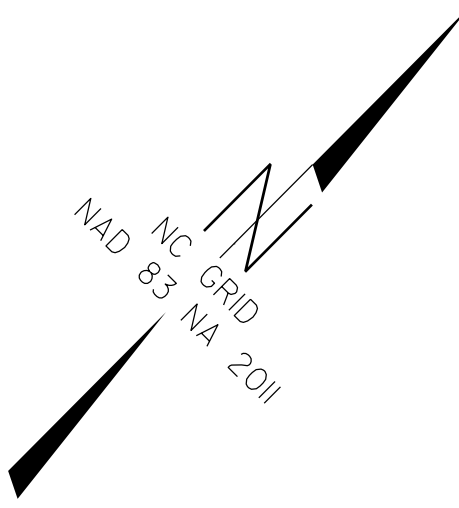
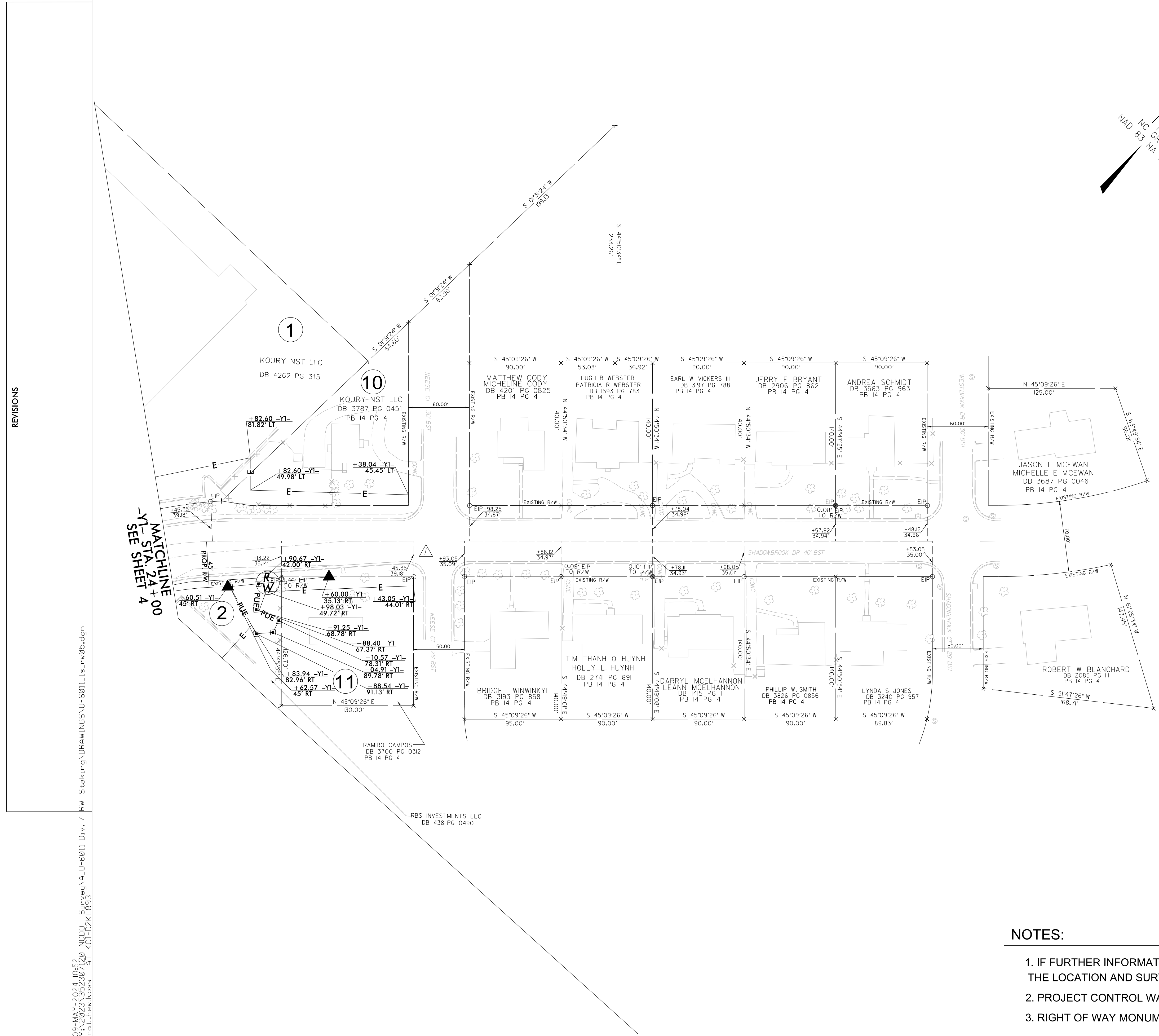


PROJECT REFERENCE NO.	SHEET NO.
U-6011	RW05
<b>Location and Surveys</b>	
 KCI Associates of N.C., P.A. 4505 Falls of Neuse Rd, Suite 400 Raleigh, NC 27609 Phone (919) 783-9214 <a href="http://www.kci.com">http://www.kci.com</a>	
PROJECT SURVEYOR	
 James M. Gellenthin	
DOCUMENT NOT CONSIDERED FINAL UNLESS ALL SIGNATURES COMPLETED	



I, James M. Gellenthin, certify that the right of way and permanent easement monumentation for this project shown herein was completed under my direct and responsible charge from an actual survey made under my supervision; that all horizontal closures had a minimum ratio of precision of 1:10,000 (Class A). Field work was performed from August 4, 2023 to August 21, 2023, and all coordinates are based on NAD 83/NA 2011. That this survey was performed to meet the requirements of 21NCA 56.1600 as applicable.

This 8th day of May 2024.  
 James M. Gellenthin  
 Professional Land Surveyor L-3860



REVISIONS

MATCHLINE  
-Y1- STA. 24+00  
SEE SHEET 4

09 MAY 2024 10:51:20 NCGDOT Surveys\A\_U-6011\_Div. 7 RW Staking\DRAWINGS\U-6011\_1.s\_rw05.dgn  
 M:\2023\156230710 KCI-D2K1893 AT  
 mathew.koss

**NOTES:**

1. IF FURTHER INFORMATION REGARDING PROJECT CONTROL IS NEEDED PLEASE CONTACT THE LOCATION AND SURVEYS UNIT.
2. PROJECT CONTROL WAS ESTABLISHED USING GNSS, THE GLOBAL NAVIGATION SATELLITE SYSTEM.
3. RIGHT OF WAY MONUMENTATION ESTABLISHED AUGUST 4, 2023 TO AUGUST 21, 2023.