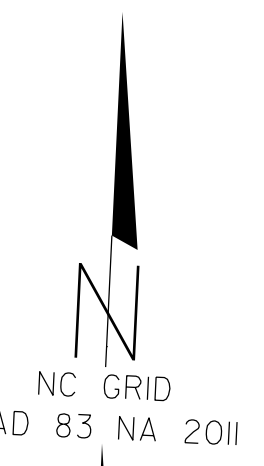


I, James M. Gellenthin, certify that the right of way and permanent easement monumentation for this project shown herein was completed under my direct and responsible charge from an actual survey made under my supervision; that all horizontal closures had a minimum ratio of precision of 1:10,000 (Class A). Field work was performed from August 4, 2023 to August 21, 2023, and all coordinates are based on NAD 83/NA 2011. That this survey was performed to meet the requirements of 21NCAC 56.1600 as applicable.

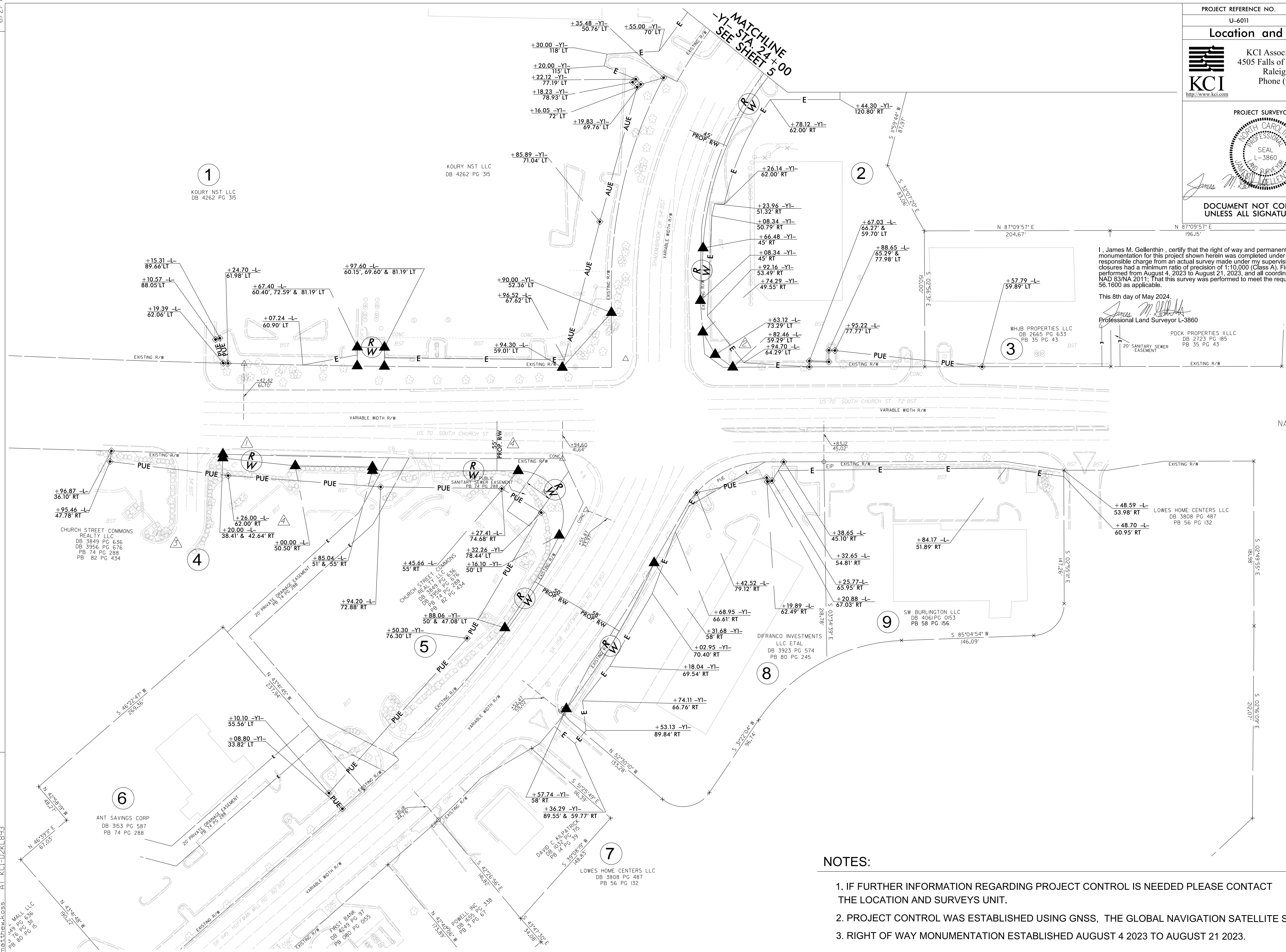
This 8th day of May 2024.

James M. Gellenthin  
Professional Land Surveyor L-3860

PDCK PROPERTIES ILLC  
DB 2723 PG 185  
PB 35 PG 43



REVISIONS



**NOTES:**

1. IF FURTHER INFORMATION REGARDING PROJECT CONTROL IS NEEDED PLEASE CONTACT THE LOCATION AND SURVEYS UNIT.
2. PROJECT CONTROL WAS ESTABLISHED USING GNSS, THE GLOBAL NAVIGATION SATELLITE SYSTEM.
3. RIGHT OF WAY MONUMENTATION ESTABLISHED AUGUST 4 2023 TO AUGUST 21 2023.

09 MAY 2024 10:55:50 NCGD01 Surveys\A\_U-6011 Div. 7 RW Steeking\DRAWINGS U-6011-1.s\_rw04.dgn  
 M:\2023\6230750 KCI-D2K1893 AT  
 L. WALLI, LLC  
 DB 80 PG 636  
 PB 80 PG 616