

5/28/19

BM #1 ELEVATION = 679.89'
N = 848216.38 E = 1857121.60
-L- STATION 13+02.23
434.16' RIGHT
PK NAIL SET IN SIDEWALK

BM #2 ELEVATION = 683.42'
N = 849111.06 E = 1857250.44
-L- STATION 14+73.42
453.39' LEFT
PK NAIL SET IN SIDEWALK

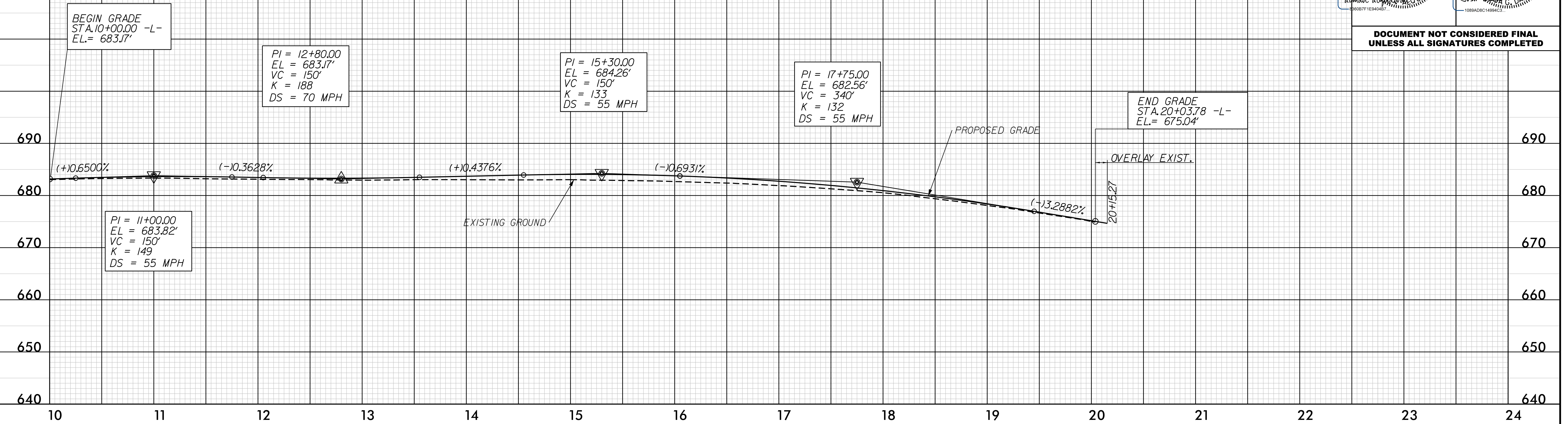
PLANS PREPARED BY:

PARSONS
RALEIGH, NORTH CAROLINA, (919) 854-1345
NC LICENSE NO. F-0246
FOR NORTH CAROLINA DEPT. OF TRANSPORTATION

SUNGATE DESIGN GROUP, P.A.
905 JONES FRANKLIN ROAD
RALEIGH, NORTH CAROLINA 27606
TEL (919) 859-2243 FAX (919) 859-0258
ENG. FIRM LICENSE NO. C480

PROJECT REFERENCE NO. <i>U-6011</i>	SHEET NO. 6
ROADWAY DESIGN ENGINEER	HYDRAULICS ENGINEER

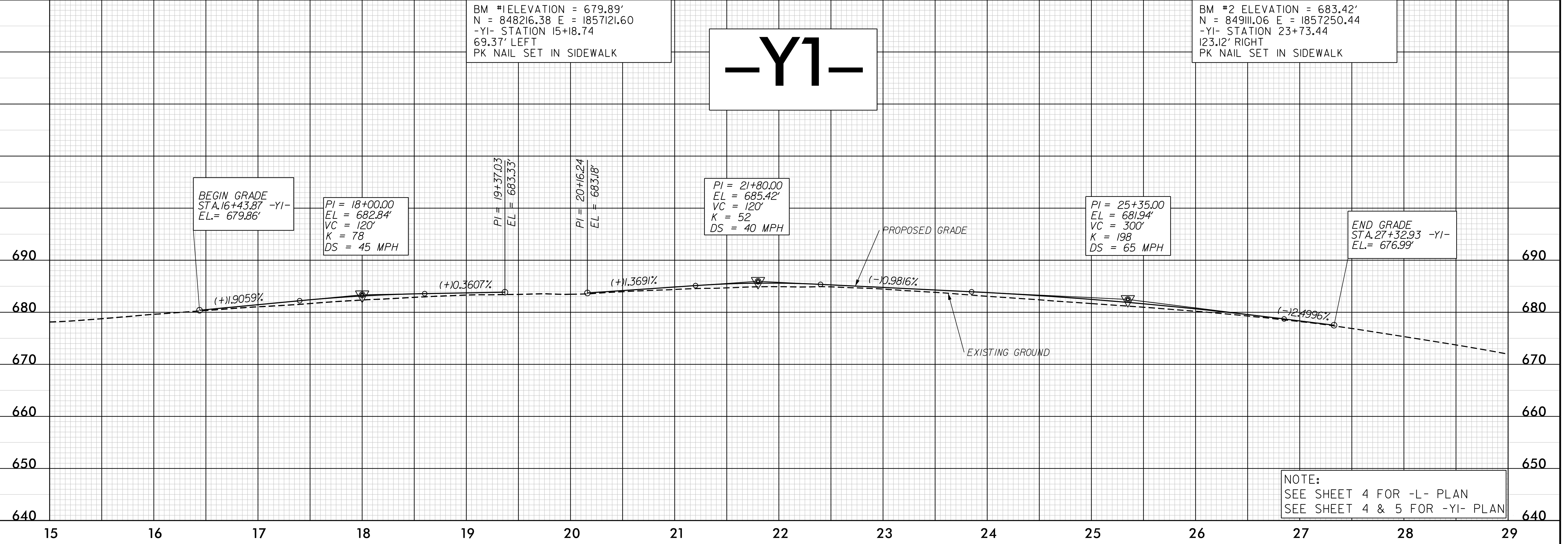
DOCUMENT NOT CONSIDERED FINAL
UNLESS ALL SIGNATURES COMPLETED



BM #1 ELEVATION = 679.89'
N = 848216.38 E = 1857121.60
-Y1- STATION 15+18.74
69.37' LEFT
PK NAIL SET IN SIDEWALK

BM #2 ELEVATION = 683.42'
N = 849111.06 E = 1857250.44
-Y1- STATION 23+73.44
123.12' RIGHT
PK NAIL SET IN SIDEWALK

-Y1-



NOTE:
SEE SHEET 4 FOR -L- PLAN
SEE SHEET 4 & 5 FOR -Y1- PLAN

21-NOV-2019 10:52
S:\3381\05\19\1906\1906011-Rdy-PFL_06.dgn