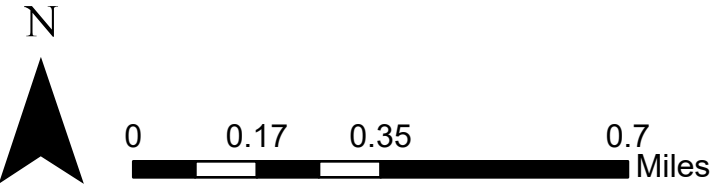


Division Primary 2	
PROJECT REFERENCE NO.	SHEET NO.
2025CPT.05.11.10391.1, ETC	2

Map 2 US 158 From Pavement
Joint to US 1

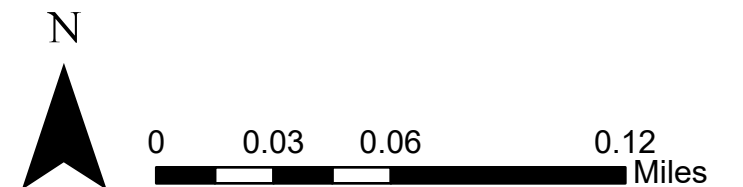
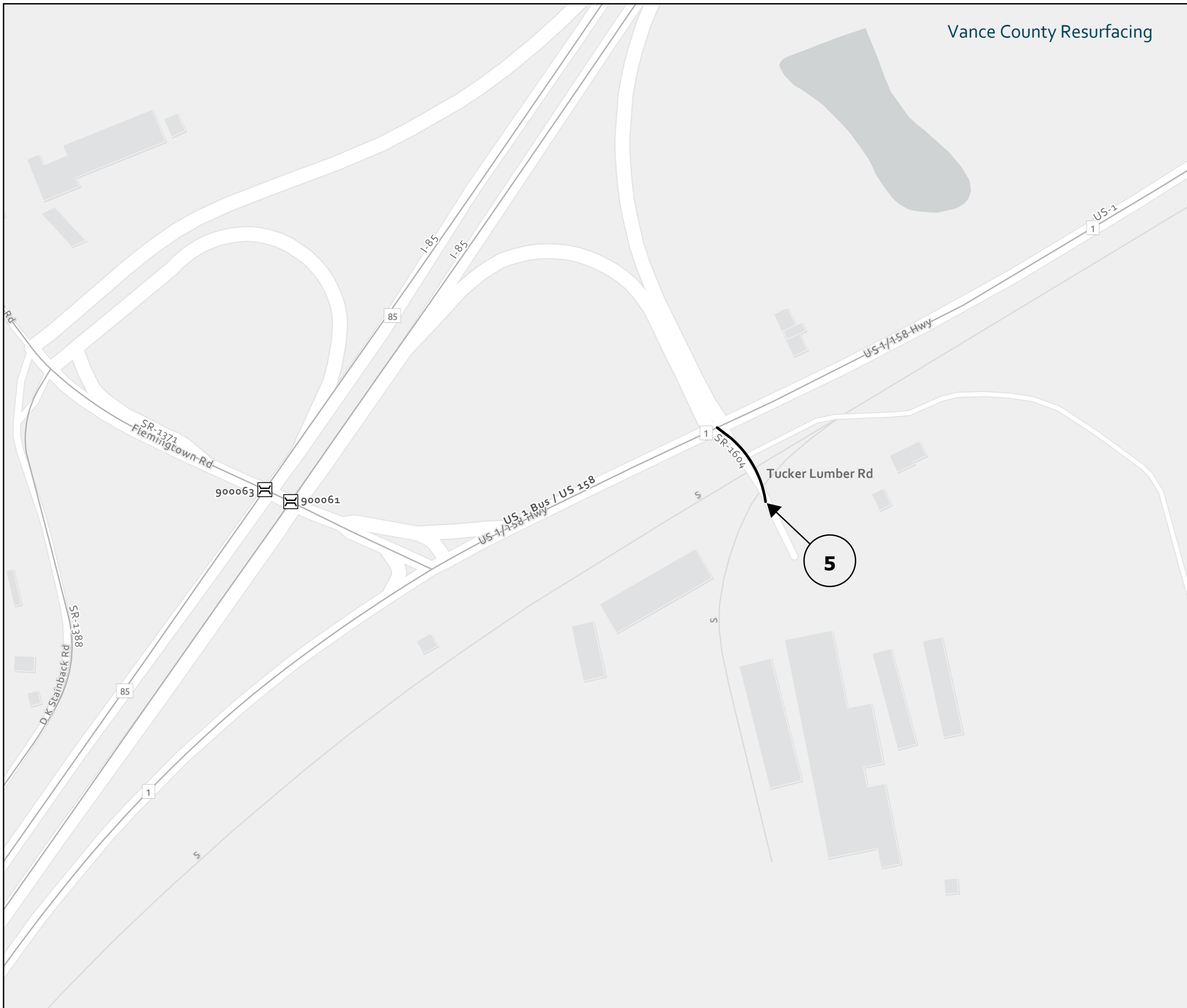
Bridge 1: 900042
Bridge 2: 900044

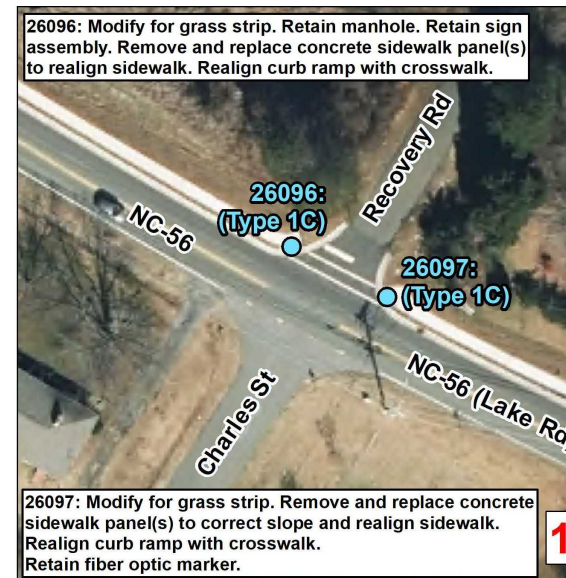
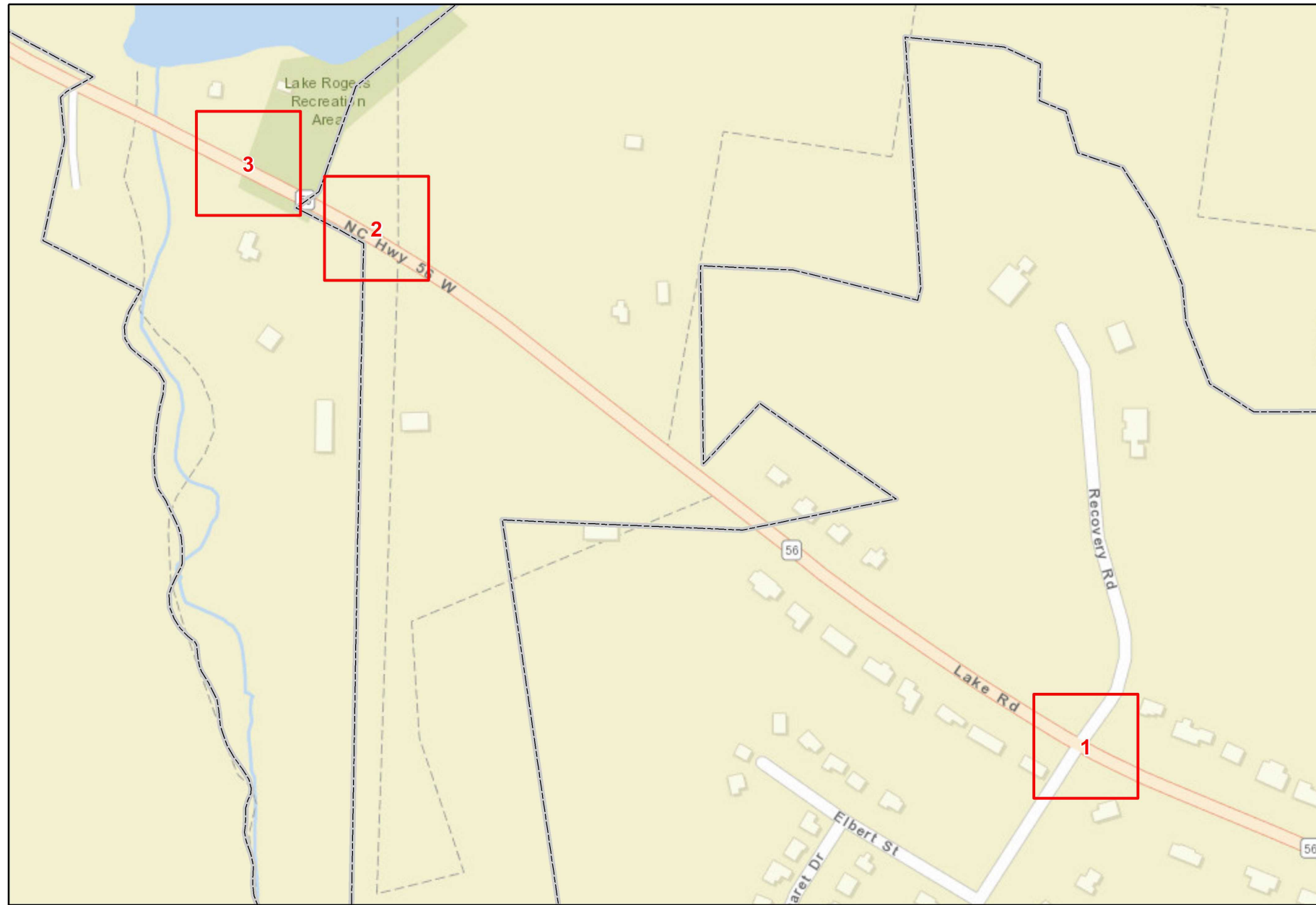


Vance County Resurfacing

Division Primary 2	
PROJECT REFERENCE NO.	SHEET NO.
2025CPT.05.11.10391.1, ETC	5

Map 5 SR 1604 (Tucker Lumber Rd)
From US 1 Bus / US 158 to Dead End





Curb Ramps To Be Repaired

- Retrofit
- Remove and Replace
- New Curb Ramp
- Remove Ramp
- Other

Municipal Boundary

NCHPO Historic Boundary (NR and LHD)

Div Pri 2
Project Number: 2025CPT.05.11.10392.1

NC 56
From SR 1103 To Pavement Joint

NORTH CAROLINA DEPARTMENT
OF TRANSPORTATION
DIVISION 5

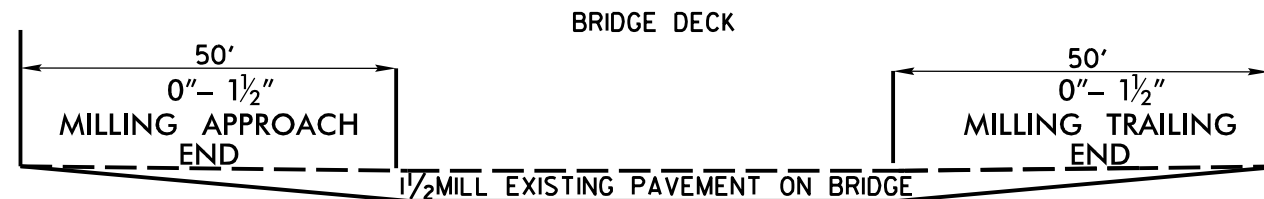
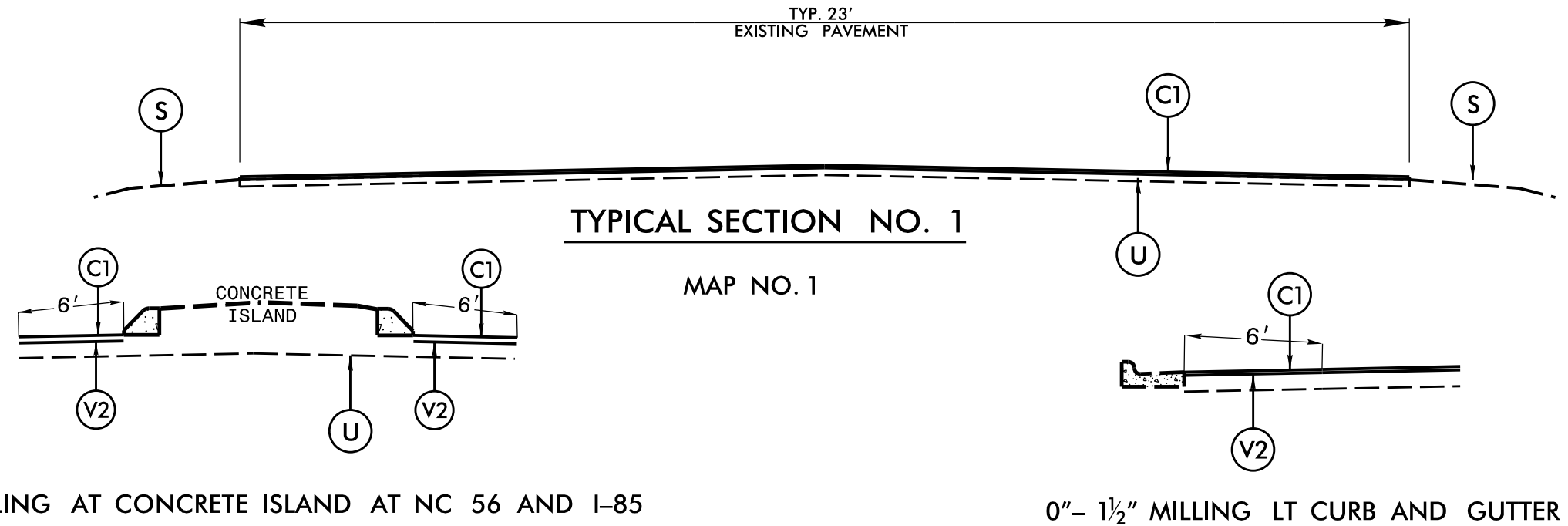
Source: NV5 Engineers and Consultants Inc., ESRI, NC OneMap, NCDOT, NCHPO

PAVEMENT SCHEDULE

GRANVILLE, VANCE, WARREN COUNTIES
RESURFACING

PROJECT REFERENCE NO.	SHEET NO.
2025CPT.05.11.10391.1, ETC	7
Prepared in the Office of:	 NC PERM LICENSE #17-0339 202 Licensing Corp. 1000 S. W. 10th St. #200 Fort Lauderdale, FL 33315

C1	PROP. APPROX. 1½" ASPHALT CONCRETE SURFACE COURSE, TYPE S9.5B AT AN AVERAGE RATE OF 165 LBS. PER SQ. YD.	U	EXISTING PAVEMENT
C2	PROP. APPROX. 1½" ASPHALT CONCRETE SURFACE COURSE, TYPE S9.5C AT AN AVERAGE RATE OF 168 LBS. PER SQ. YD.	V1	MILLING ASPHALT PAVEMENT, 1½" (INCIDENTAL MILLING)
S	SHOULDER RECONSTRUCTION, ASB REQUIRED	V2	MILLING ASPHALT PAVEMENT, 0"-1½"

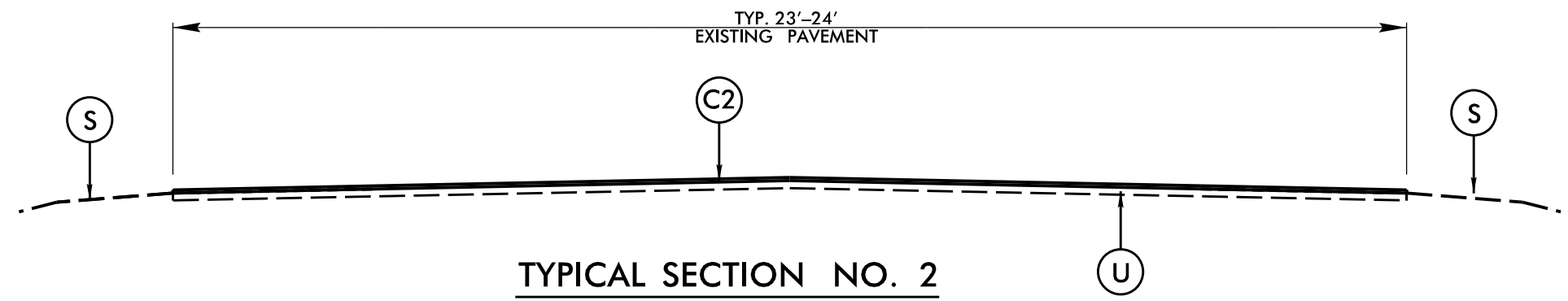


0"- 1½" MILLING AT APPROACH TRAILING END OF BRIDGES 380002 AND 380045
1½" MILLING ACROSS BRIDGES

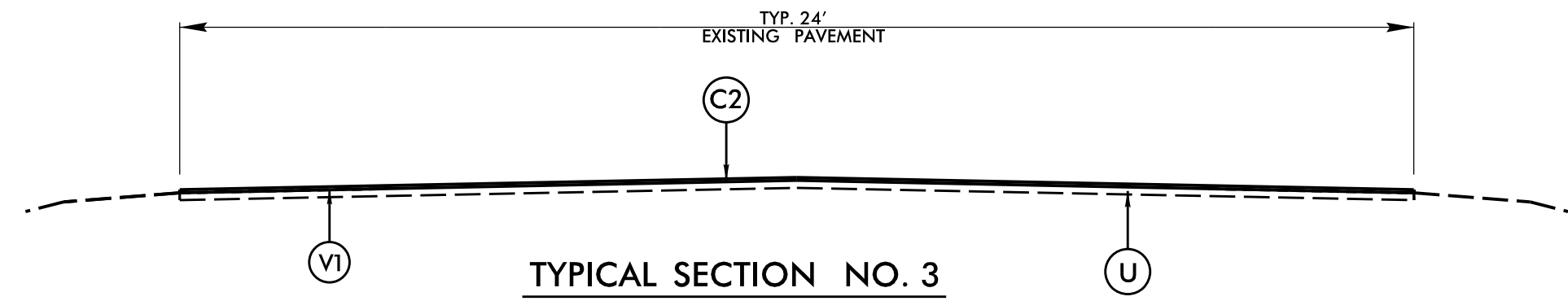
*** ALL MILLING FOR BRIDGES TO BE PAID AS INCIDENTAL MILLING ***

C:\TIF\PROJECTS\2025\2025CPT.05.11.10391.1\DRAWINGS\PAVEMENT SCHEDULE.DWG

PAVEMENT SCHEDULE	
C1	1½" S9.5B
C2	1½" S9.5C
S	SHLD RECON
U	EXIST. PAVEMENT
V1	1½" MILLING
V2	0" - 1½" MILLING



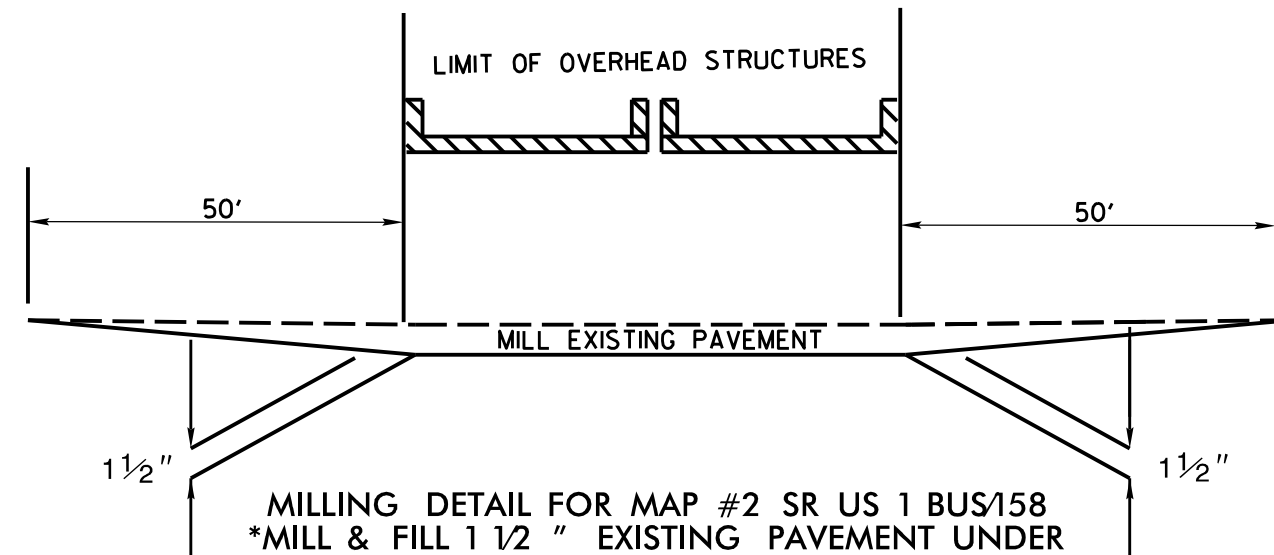
MAP NOS. 2-4



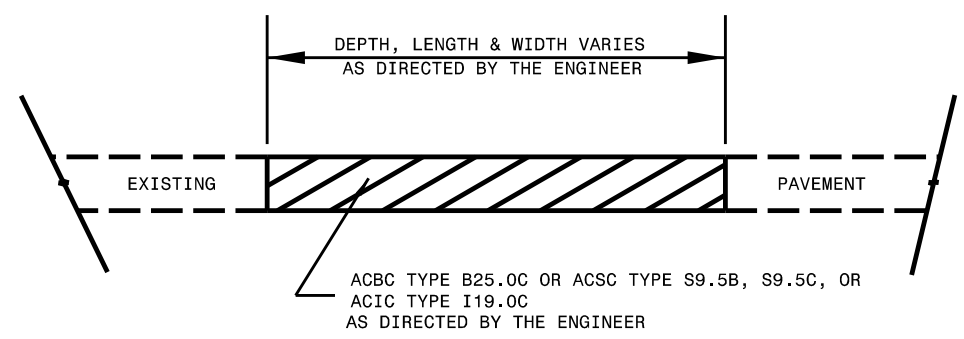
MAP NO. 5

1½" MILLING TO BE PAID UNDER INCIDENTAL MILLING
LINE ITEM AS AREA TO BE MILLED IS UNDER 500'

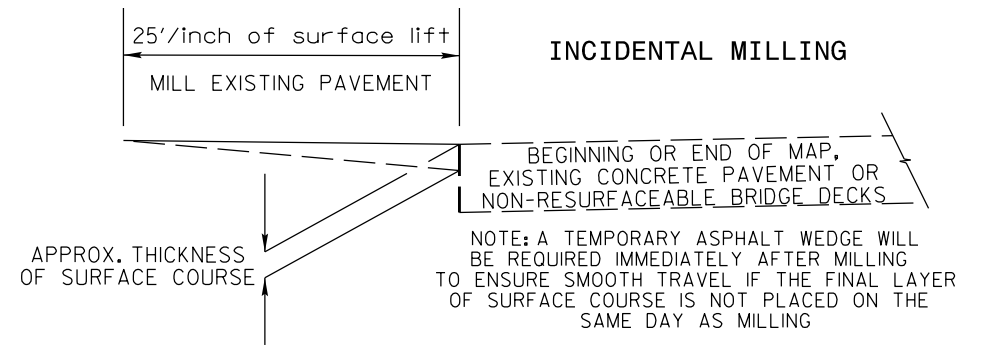
PAVEMENT SCHEDULE	
C1	1 1/2" S9.5B
C2	1 1/2" S9.5C
S	SHLD RECON
U	EXIST. PAVEMENT
V1	1 1/2" MILLING
V2	0" - 1 1/2" MILLING



MILLING DETAIL FOR MAP #2 SR US 1 BUS/158
 *MILL & FILL 1 1/2 " EXISTING PAVEMENT UNDER
 US 1 OVERHEAD STRUCTURES TO MAINTAIN
 VERTICAL CLEARANCE
 (TO BE PAID AS INCIDENTAL MILLING)



PATCHING EXISTING PAVEMENT
 MILLING TO BE PERFORMED PRIOR TO PATCHING



ADA SUMMARY OF QUANTITIES - NC 56 FROM SR 1103 TO PAVEMENT JOINT

Municipality:	Creedmoor
WBS Number:	2025CPT.05.11.10391.1, ETC
County:	Granville

Sheet No.
11

Ramp ID	Inset Map Number	Route 1	Route 2	2549000000-E (LF) 2'-6" Concrete Curb & Gutter	2752000000-E (LF) Remove And Replace 2'-6" Concrete Curb & Gutter	2591000000-E (SY) 4" Concrete Sidewalk	2738000000-E (SY) Remove And Replace 4" Concrete Sidewalk	2738000000-E (SY) Remove 4" Concrete Sidewalk	2612500000-N (EA) Remove and Replace Concrete Curb Ramps	Improvement Type
26096	1	NC-56	Recovery Rd				6		1	Type 1C - 848.06
26097	1	NC-56	Recovery Rd				9		1	Type 1C - 848.06
26095	2	NC-56	Lake Rodgers Park (1718 NC-56) East Entrance		5		9		1	Type 1C - 848.06
26093	3	NC-56	Lake Rodgers Park (1718 NC-56) West Entrance		8		27		1	Type 1C - 848.06
-	-	-	-	12*	-	12*	-	12*	-	
Sub-Total for NC 56 From SR 1103 To Pavement Joint				12	13	12	51	12	4	

Notes: (1) ADA quantity totals are provided on the project 'ADA SUMMARY OF QUANTITIES - TOTALS' page. (2) *Contingency line item amount provided for adjustments outside of curb ramp pay limits.

ADA SUMMARY OF QUANTITIES - TOTALS

WBS Number:	2025CPT.05.11.10391.1, ETC
County:	Granville

Sheet No.
12

WBS Number	County	Municipality	Resurfacing Route	4447000000-E (LF) Pedestrian Channelizing Devices	4600000000-N (EA) Traffic Control Item - Pedestrian Transport Service	4600000000-N (EA) Traffic Control Item - Audible Warning Devices	2549000000-E (LF) 2'-6" Concrete Curb & Gutter	2752000000-E (LF) Remove And Replace 2'-6" Concrete Curb & Gutter	2591000000-E (SY) 4" Concrete Sidewalk	2738000000-E (SY) Remove And Replace 4" Concrete Sidewalk	2738000000-E (SY) Remove 4" Concrete Sidewalk	2612500000-N (EA) Remove and Replace Concrete Curb Ramps
2025CPT.05.11.10391.1	Granville	Creedmoor	NC 56 From SR 1103 To Pavement Joint	30	5	2	12	13	12	51	12	4
GRAND TOTAL				30	5	2	12	13	12	51	12	4

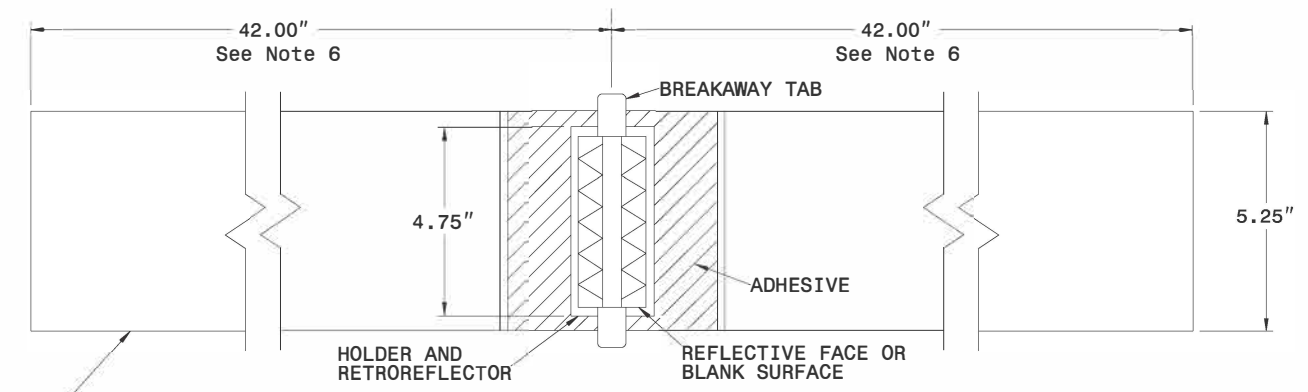
PROJECT NO.	SHEET NO.	TOTAL NO.
2025CPT.05.11.10931.1, ETC.		13

SUMMARY OF QUANTITIES

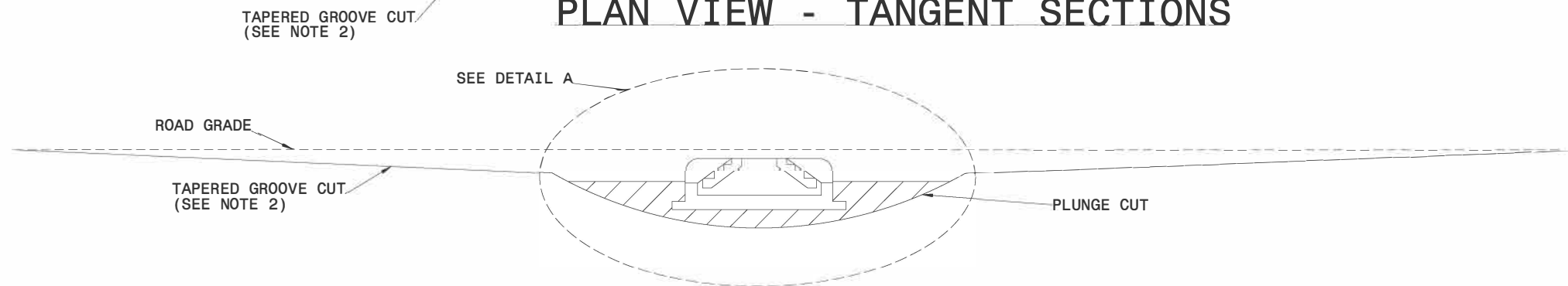
PROJECT NO	COUNTY	MAP NO	ROUTE	DESCRIPTION	TYP NO	LENGTH	WIDTH	1220000000-E	1245000000-E	1260000000-E	1308000000-E	1330000000-E	1519000000-E	1523000000-E	1575000000-E	1704000000-E	2549000000-E	2591000000-E	2612500000-N	2738000000-E	2738000000-E	2752000000-E	2830000000-N	4600000000-N	4600000000-N	5255000000-N	7444000000-E		
								INCIDENTAL STONE BASE	SHOULDER RECONSTRUCTION	AGGREGATE SHOULDER BORROW	0" TO 1.5" MILLING	INCIDENTAL MILLING	SURFACE COURSE, S9.5B	SURFACE COURSE, S9.5C	ASPHALT BINDER FOR PLANT MIX	PATCHING EXISTING PAVEMENT	2'-6" CONCRETE CURB & GUTTER	4" CONCRETE SIDEWALK	REMOVE AND REPLACE CONCRETE CURB RAMPS	REMOVE AND REPLACE 4" CONCRETE SIDEWALK	REMOVE 4" CONCRETE SIDEWALK	REMOVE AND REPLACE 2'-6" CONCRETE CURB & GUTTER	ADJUST MANHOLES	PEDESTRIAN TRANSPORT SERVICE	AUDIBLE WARNING DEVICES	PORTABLE LIGHTING	INDUCTIVE LOOP SAWCUT		
								TONS	SMI	TON	SY	SY	TONS	TONS	TON	TONS	LF	SY	EA	SY	SY	LF	EA	EA	LS	LF			
2025CPT.05.11.10391.1	Granville	1	NC-56 E / E C ST/NC HWY 56 W/LAKE RD	FROM SR 1103 TO PAVEMENT JOINT	1	4.797	23-48	241	9.59	887	3,100	3,790	6,973		459	114	12	12	4	51	12	13	1	5	2	1.00	1,335		
TOTAL FOR PROJ NO. 2025CPT.05.11.10391.1						4.797		241	9.59	887	3,100	3,790	6,973		459	114	12	12	4	51	12	13	1	5	2	1.00	1,335		
2025CPT.05.11.10911.1	Vance	2	US-158 E / US 1 158 HWY N	FROM PAVEMENT JOINT TO US 1	2	1.00	23	53	2.02	184		1,380			79	50													
2025CPT.05.11.10911.1	Vance	3	US-1 N / US 1 158 HWY N/BROAD ST	FROM US 1 NB TO WARREN COUNTY	2	4.954	23	250	9.90	914				6,210	368	30												50	
TOTAL FOR PROJ NO. 2025CPT.05.11.10911.1						5.954		303	11.92	1,098		1,380		7,504	447	80												50	
2025CPT.05.11.10931.1	Warren	4	US-1 N / US HIGHWAY 1 S/US HIGHWAY 1	FROM VANCE COUNTY TO US 158 / 401	2	6.079	24-36	307	12.16	1,123		580			470	10													
TOTAL FOR PROJ NO. 2025CPT.05.11.10931.1						6.079		307	12.16	1,123		580		7,950	470	10													
2025CPT.05.11.20911.1	Vance	5	SR 1604 / TUCKER LUMBER RD.	US 1 TO END OF MAINTENANCE	3	0.033	24-26	1				685			58	3													
TOTAL FOR PROJ NO. 2025CPT.05.11.20911.1						0.033		1				685		58	3														
GRAND TOTAL						16.863		852	33.67	3,108	3,100	6,435	6,973	15,512	1,379	204	12	12	4	51	12	13	1	5	2	1.00	1,385		

THERMOPLASTIC AND PAINT QUANTITIES

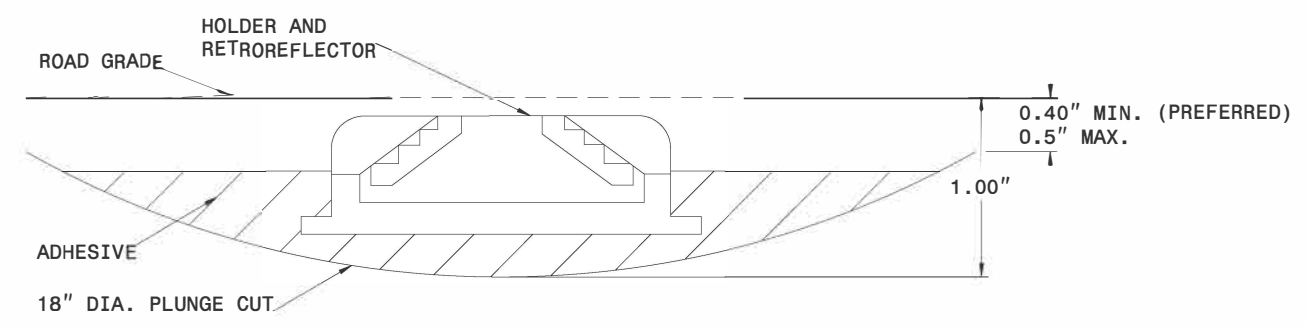
PROJECT NO	COUNTY	MAP NO	ROUTE	DESCRIPTION	TYP NO	LENGTH	WIDTH	441300000-E	444700000-E	445700000-N	468800000-E		469500000-E		470900000-E	472000000-E		472500000-E				470400000-E	489500000-N	
								WORK ZONE ADVANCE/GENERAL WARNING SIGNING	PEDESTRIAN CHANNELIZING DEVICES	TEMPORARY TRAFFIC CONTROL	6" X 90 M YELLOW THERMO	6" X 90 M WHITE THERMO	8" X 90 M WHITE THERMO	8" X 90 M YELLOW THERMO	24" X 90 M WHITE THERMO	THERMO MSG RXR 90 M	THERMO MSG SCHOOL 90 M	THERMO LT ARROW 90 M	THERMO STR & RT ARROW 90 M	THERMO RT ARROW 90 M	THERMO STR ARROW 90 M	16" X 90 M WHITE THERMO	INLAID CRADLE MARKERS	
								SF	LF	LS	LF	LF	LF	LF	EA	EA	EA	EA	EA	EA	EA	EA	EA	
2025CPT.05.11.10391.1	Granville	1	NC-56 E / E C ST/NC HWY 56 W/LAKE RD	FROM SR 1103 TO PAVEMENT JOINT	1	4.797	23-48	540	30	0.20	58,314	54,895	100		290	4		39	1	3	4	100	786	
TOTAL FOR PROJ NO. 2025CPT.05.11.10391.1						4.797		540	30	0.20	58,314	54,895	100		290	4		39	1	3	4	100	786	
											113,209		100			4				47				
2025CPT.05.11.10911.1	Vance	2	US-158 E / US 1 158 HWY N	FROM PAVEMENT JOINT TO US 1	2	1	23	130		0.10	9,966	11,120											145	
2025CPT.05.11.10911.1	Vance	3	US-1 N / US 1 158 HWY N/BROAD ST	FROM US 1 NB TO WARREN COUNTY	2	4.954	23	559		0.20	50,807	54,311			100		12						633	
TOTAL FOR PROJ NO. 2025CPT.05.11.10911.1						5.954		689		0.30	60,773	65,431			100		12						778	
											126,204					12								
2025CPT.05.11.10931.1	Warren	4	US-1 N / US HIGHWAY 1 S/US HIGHWAY 1	FROM VANCE COUNTY TO US 158 / 401	2	6.079	24-36	688		0.40	64,681	66,796						1	1		1		815	
TOTAL FOR PROJ NO. 2025CPT.05.11.10931.1						6.079		688		0.40	64,681	66,796							1	1		1		815
											131,477		310							3				
2025CPT.05.11.20911.1	Vance	5	SR 1604 / TUCKER LUMBER RD.	US 1 TO END OF MAINTENANCE	3	0.033	24-35	4		0.10	352				49	2								
TOTAL FOR PROJ NO. 2025CPT.05.11.20911.1						0.033		4		0.100	352				49	2								
											352					2								
GRAND TOTAL						16.86		1,921	30	1.00	184,120	187,122	100	310	439	6	12	40	2	3	5	100	2,379	
											371,242		410			18			50					



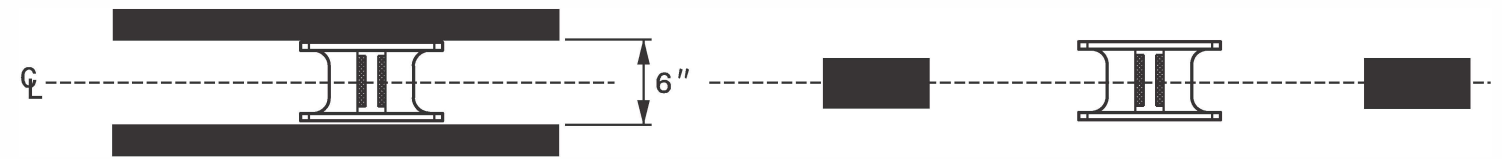
PLAN VIEW - TANGENT SECTIONS



PROFILE VIEW



DETAIL A



MARKER SPACING



Drawn/Designed by:
Renee B. Roach
10/10/2024

NOTES:

1. ALL GROOVE EDGES SHALL BE AT LEAST 2 INCHES FROM ANY SEAM OR PAVEMENT JOINT
2. GROOVE CUTS MAY BE TAPERED OR BEVELED. TAPERED CUTS SHALL START AT ROAD LEVEL ON EACH END AND TAPER AT A FIXED RATE AS SHOWN ON THE PROFILE VIEW. BEVELED GROOVE CUTS SHALL BE 0.5" MAXIMUM DEPTH (0.4" PREFERRED), AND SHALL BE 0.4" MINIMUM DEPTH AT BOTH ENDS OF THE PLUNGE CUT.
3. GROOVE AND PLUNGE CUT SHALL BE CLEAN AND DRY PRIOR TO PLACEMENT OF ADHESIVE.
4. THE EPOXY ADHESIVE SHALL BE THOROUGHLY MIXED UNTIL IT IS UNIFORM IN COLOR, AND APPLIED IN COLOR, AND APPLIED IN ACCORDANCE WITH THE MANUFACTURER'S INSTALLATION INSTRUCTIONS.
5. MARKER SHALL BE INSTALLED AS PER MANUFACTURER'S INSTALLATION INSTRUCTIONS WITH THE BREAKWAY TABS RESTING ON THE PAVEMENT SURFACE. THE EPOXY SHALL BE FILLED TO THE LEVEL OF THE TOP OF THE MARKER HOLDER. EPOXY SHALL NOT TOUCH THE RETROREFLECTOR.
6. TOTAL GROOVE LENGTH MAY BE SHORTENED TO 54" ON SHARP CURVES IF APPROVED BY THE ENGINEER. GROOVES SHALL NOT OVERLAP WITH LOOP DETECTOR WIRES.

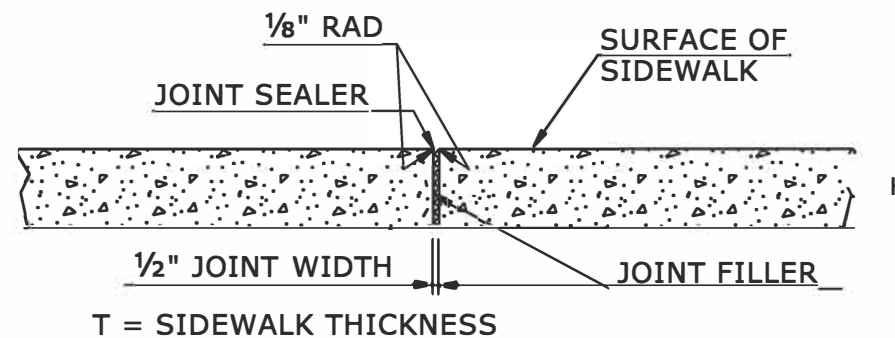
CONTRACTS STANDARDS AND DEVELOPMENT UNIT	
Office 919-707-8950	FAX 919-250-4119
DETAIL OF INLAID CRADLE MARKER	
ORIGINAL BY: rgwatson	DATE: 02-06-2024
MODIFIED BY:	DATE:
CHECKED BY:	DATE:
FILE SPEC.:	

NOTES:

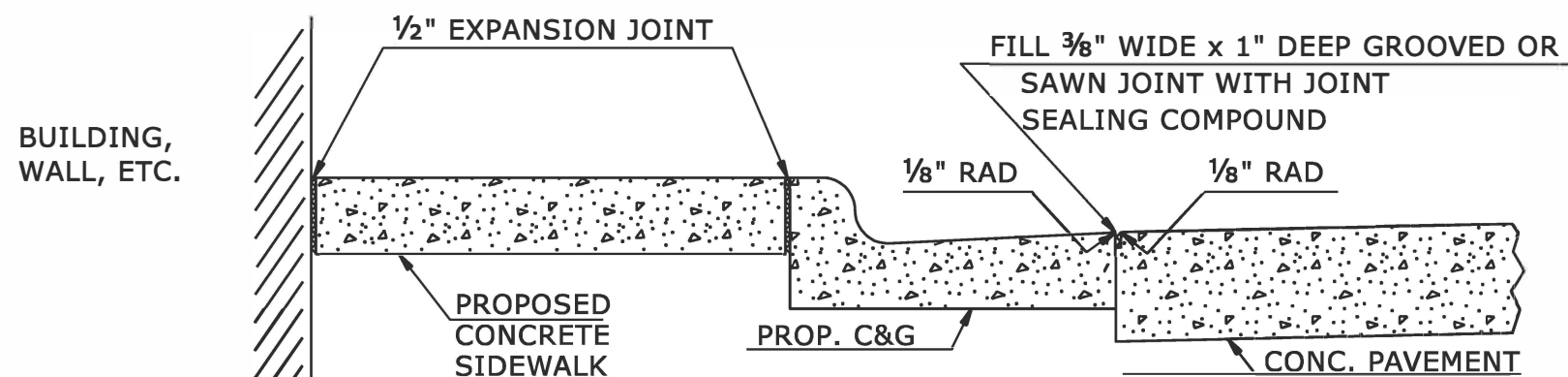
CONSTRUCT STANDARD SIDEWALK 5' WIDE AND 4" THICK UNLESS OTHERWISE DENOTED ON PLANS.

PLACE A GROOVE JOINT 1" DEEP WITH 1/8" RADII IN THE CONCRETE SIDEWALK AT 5' INTERVALS. ONE 1/2" EXPANSION JOINT WILL BE REQUIRED AT 50' INTERVALS. A 1/2" EXPANSION JOINT WILL BE REQUIRED WHERE THE SIDEWALK JOINS ANY RIGID STRUCTURE.

SEE STD. DWG. 848.06 FOR CURB RAMP LOCATION REQUIREMENTS AND CONSTRUCTION GUIDELINES.



TRANSVERSE EXPANSION JOINT IN SIDEWALK



DETAILS SHOWING JOINTS IN CONCRETE SIDEWALK

STATE OF NORTH CAROLINA
DEPT. OF TRANSPORTATION
DIVISION OF HIGHWAYS
RALEIGH, N.C.

ROADWAY DETAIL DRAWING FOR
CONCRETE SIDEWALK



Signed by:
Nicole M. Hackler
5884323D34164C5...
12/9/2024

SHEET 1 OF 1
848D01

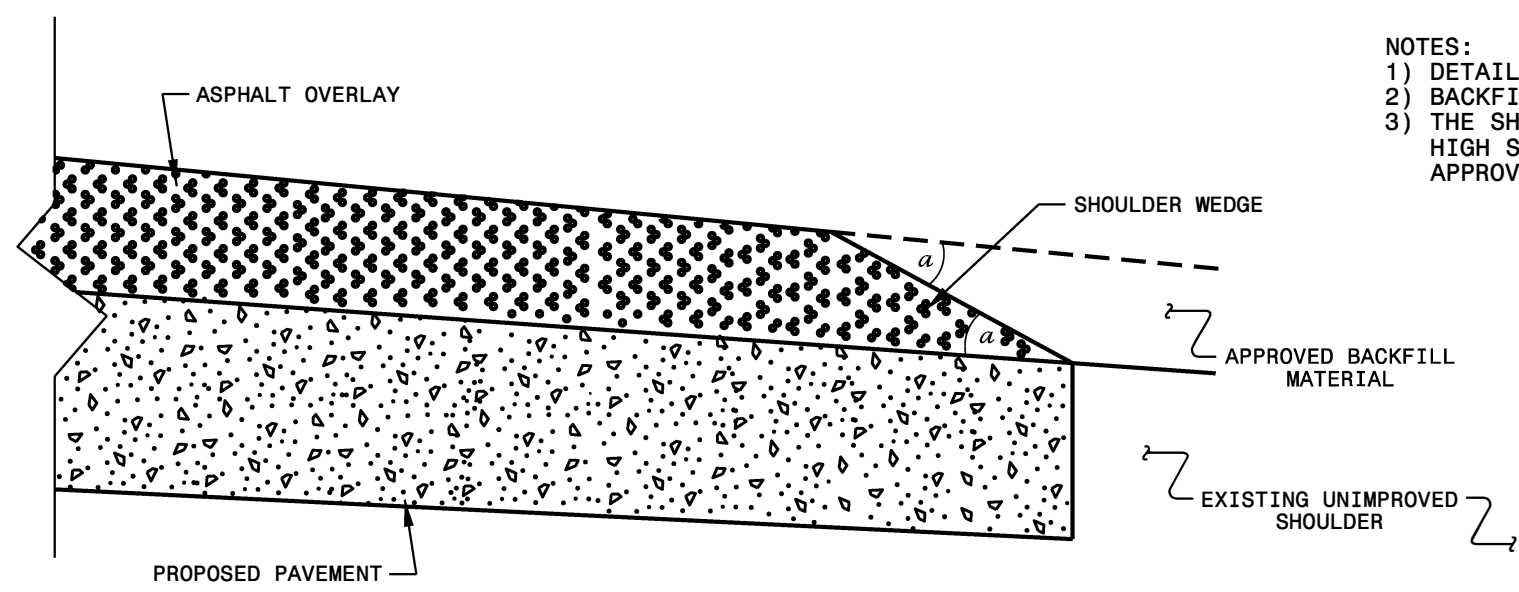
DOCUMENT NOT CONSIDERED FINAL
UNLESS ALL SIGNATURES COMPLETED

CONTRACTS STANDARDS AND DEVELOPMENT UNIT
Office 919-707-6950 FAX 919-250-4119

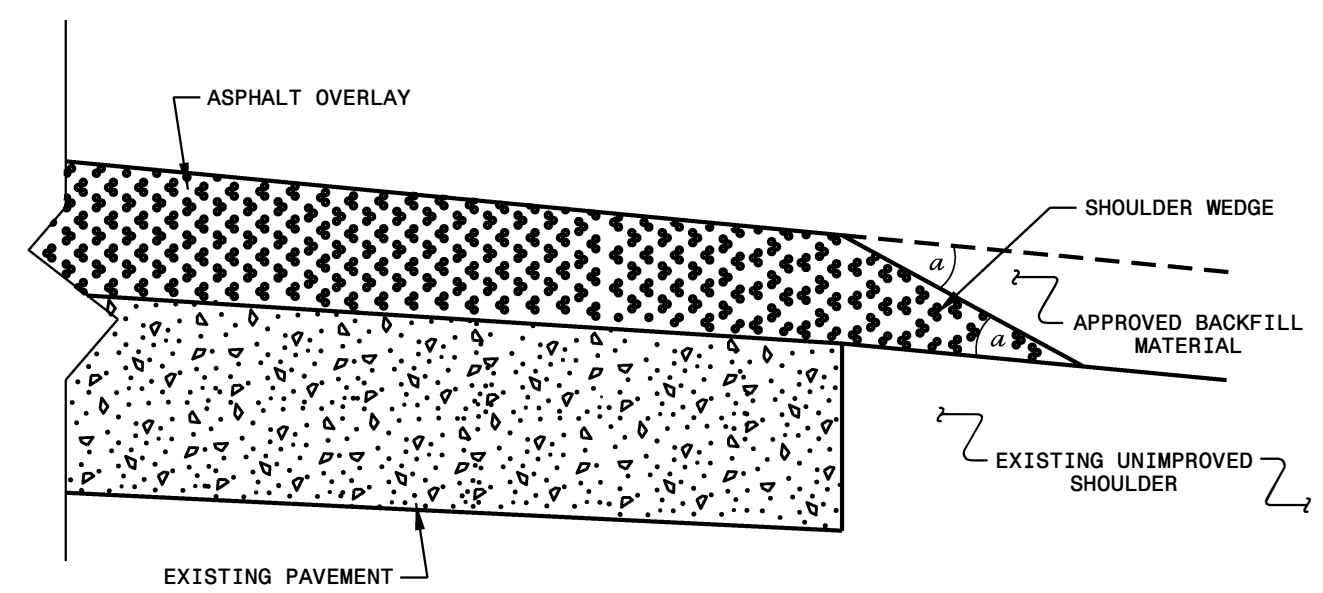
SEE TITLE BLOCK

ORIGINAL BY: S.CALHOUN DATE: 7-25-2024
MODIFIED BY: _____ DATE: _____
CHECKED BY: _____ DATE: _____
FILE SPEC.: _____

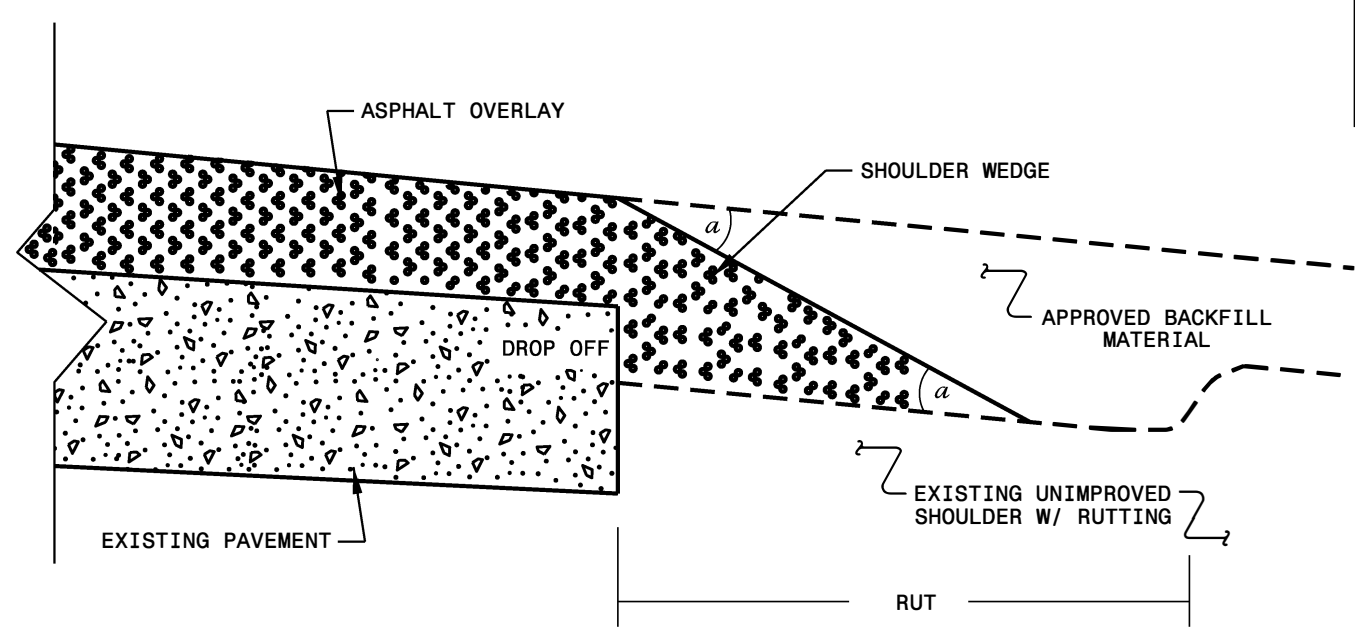
- NOTES:
 1) DETAIL DOES NOT APPLY TO OGAFB AND ULTRA-THIN BONDED WEARING COURSE.
 2) BACKFILL SHOULDER WITH APPROVED MATERIAL.
 3) THE SHOULDER WEDGE DEVICE MAY BE DISENGAGED AT PAVED DRIVEWAYS, SIDE STREETS, HIGH SHOULDERS, AND OTHER LOCATIONS NOT FEASIBLE TO CONSTRUCT AS APPROVED BY THE ENGINEER.



SHOULDER WEDGE DETAIL
 (Resurfacing Projects w/ Widening or with Existing Paved Shoulder having no dropoffs)



SHOULDER WEDGE DETAIL
 (Resurfacing Projects w/ NO Widening)



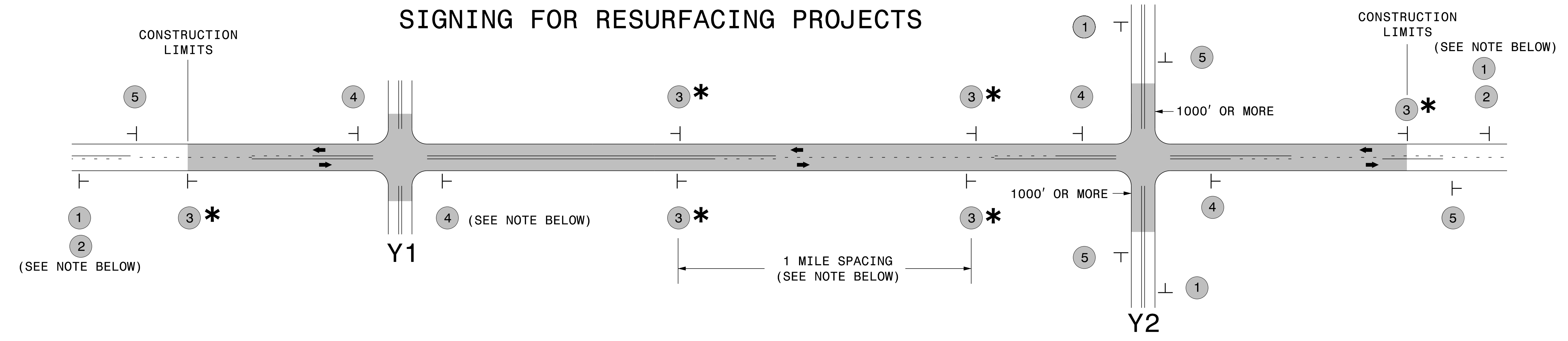
SHOULDER WEDGE DETAIL
 (Resurfacing Adjacent to Rutted Shoulder)

- SHOULDER WEDGE ANGLE = 30°

CONTRACT STANDARDS AND DEVELOPMENT UNIT	
Office 919-707-6950	FAX 919-250-4119
SHOULDER WEDGE DETAILS	
ORIGINAL BY: T.SPELL	DATE: 7-19-11
MODIFIED BY:	DATE: 2/2/16
CHECKED BY:	DATE:
FILE SPEC.: s:\usr\details\stand\shoulderwedgedetail.dgn	

22-MAN-2018-0941
 S:\Contracts\2018\Resurfacing Projects\Division 4\I-5937 Wilson March 2018\Revised Shoulder Wedge Detail.dgn
 P:\piper\an\USD\2018\2018

SIGNING FOR RESURFACING PROJECTS



LEGEND	
⊥	STATIONARY SIGN
←	DIRECTION OF TRAFFIC FLOW

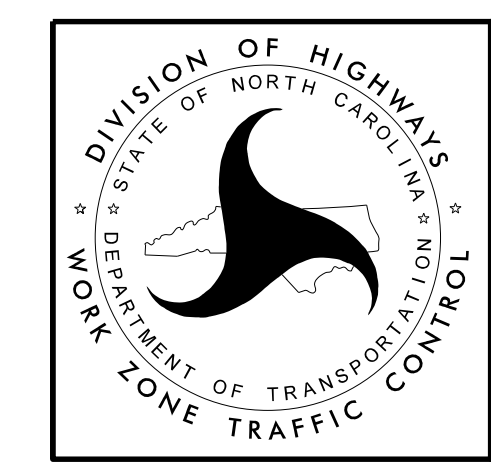
MAINLINE (-L-) SIGNING

-Y- LINE SIGNING

SIGNING NOTES AND PLACEMENT PER DIRECTION	MAINLINE (-L-) SIGNING		-Y- LINE SIGNING	
	1	 W20-1 48" X 48"	PLACE 1000' PRIOR TO BEGINNING OF CONSTRUCTION LIMITS. ONLY USED ON -Y- LINES IF RESURFACING LIMITS EXTEND 1000' ALONG -Y- LINE.	<p>NO REQUIRED STATIONARY SIGNING FOR THE FOLLOWING -Y- LINE CONDITIONS:</p> <ol style="list-style-type: none"> LESS THAN 1000' OF RESURFACING ALONG -Y- LINE SUBDIVISION ROADS DEAD END ROADS <p>WHEN PAVING/CONSTRUCTION ACTIVITIES PROCEED ACROSS AN UNSIGNED -Y- LINE, ADVANCE WARNING PORTABLE SIGNS SHALL BE USED ALONG THE -Y- LINE AS SHOWN BELOW. REMOVE UPON COMPLETION OF WORK.</p> <div style="display: flex; justify-content: space-around;"> <div> W20-1 48" X 48" </div> <div> W20-7 A 48" X 48" </div> </div> <p>PLACED 500' IN ADVANCE OF FLAGGER. PLACED 250' IN ADVANCE OF FLAGGER.</p>
	2	 W7-3aP 24" X 18"	#2 SIGN ONLY USED WHEN RESURFACING LIMITS ARE 2 OR MORE MILES IN LENGTH. ROUND UP TO NEXT WHOLE NUMBER. (NO FRACTIONAL OR DECIMAL NUMBERS)	
	3 *	 SP 13107 48" X 48"	PLACE INITIALLY AT THE CONSTRUCTION LIMITS AND SPACED 1 MILE APART THEREAFTER. IF NO -Y- LINES EXIST, PLACE 2ND SET 1/2 MILE FROM THE CONSTRUCTION LIMITS AND THEN SPACE 1 MILE THEREAFTER.	
	4	 SP 13106 48" X 48"	THESE ARE FOR -Y- LINES THAT ARE "THROUGH" ROADWAYS. DEAD END AND SUBDIVISION ROADS ARE NOT "THROUGH" ROADWAYS. INSTALL 500' +/- FROM EACH -Y- LINE APPROACH AS SHOWN ABOVE. FOR MULTIPLE -Y- LINES THAT ARE SEPARATED BY 0.25 MILES OR LESS, TREAT AS A SINGLE UNIT AND INSTALL WITHIN 500' OF EACH APPROACH. A MAXIMUM OF 2 SIGN SETS PER MILE. DO NOT INSTALL WHEN -Y- LINES ARE WITHIN 0.5 MILES FROM "END ROAD WORK" SIGN.	
5	 G20-2 A 48" X 24"	PLACE 500' FOLLOWING THE END OF CONSTRUCTION LIMITS.		

* SIGNING FOR ASPHALT SURFACE TREATMENTS (ONLY)

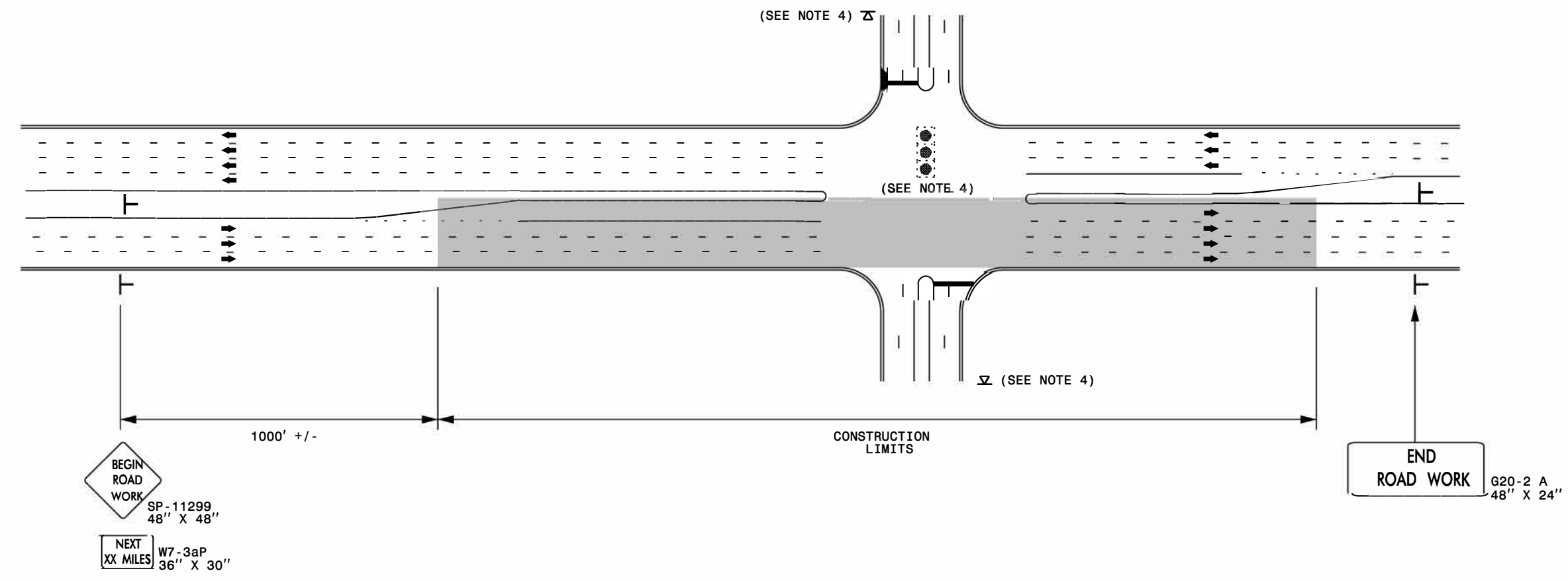
SUBSTITUTE LOW/SOFT SHOULDER SIGNS BY ALTERNATING THE FOLLOWING TWO SIGNS: STARTING WITH "UNMARKED PAVEMENT AHEAD" (SP 06026) FOLLOWED BY "LOOSE GRAVEL" (W8-7).



RESURFACING ADVANCE WARNING SIGNS FOR RURAL AND SUBURBAN 2 LANE ROADWAYS

6/3/2014 S:\T\U\WZTC\Apps\WorkZoneGeneral\ExternalWebPage\DesRes\Resurfacing\Resurfacing_AdvWarn_2Ln.dgn User:rmgarr.eht

URBAN / SUBURBAN WORKZONES



NOTES:

- 1) 48" x 48" SIZED SIGNS (SP- 11299) MAY BE REDUCED TO 36" X 36" ON ROADWAYS WITH SPEED LIMITS OF 40 MPH OR LESS.
- 2) MOUNT SIGNS THAT ARE LARGER THAN 10 SQUARE FEET IN AREA ON TWO OR MORE WOOD OR U-CHANNEL SUPPORTS. PERFORATED SQUARE TUBING SUPPORT SYSTEMS MAY SUPPORT LARGER AREAS ON A SINGLE SUPPORT. FOLLOW MANUFACTURER'S RECOMMENDATIONS. THESE SYSTEMS SHALL BE NCHRP 350 COMPLIANT AND NCDOT APPROVED.
- 3) ADVANCE WARNING SIGNS NOT REQUIRED ON NON-SIGNALIZED SIDE STREETS.
- 4) MAY USE LAW ENFORCEMENT TO CONTROL TRAFFIC AT SIGNALIZED INTERSECTIONS AS DIRECTED BY THE ENGINEER. PROVIDE PORTABLE "ROAD WORK AHEAD" (W20-1) SIGNS 500' IN ADVANCE ALONG BOTH APPROACHES FROM THE SIDE STREETS WHEN PAVING PROCEEDS THROUGH THE INTERSECTION.
- 5) LATERAL CLEARANCE AT ALL SIGN LOCATIONS SHALL BE 2' AS MEASURED FROM THE EDGE OF PAVEMENT OR THE FACE OF THE CURB. WHEN UNABLE TO OBTAIN THE LATERAL CLEARANCE WITHIN THE MEDIAN AREA USE SHOULDER MOUNTS ONLY.
- 6) SIGN MOUNT LOCATIONS SHALL NOT BLOCK SIDEWALKS OR DRIVEWAYS.
- 7) IF STATIONARY GENERAL WARNING SIGNS ARE USED, THEY WILL BE PAID FOR PER SECTION 104 OF THE NCDOT STANDARD SPECIFICATIONS AS EXTRA WORK.
- 8) IF MILLED AREAS ARE NOT PAVED BACK BY THE END OF THE WORK DAY, PORTABLE SIGNS SHALL BE USED TO WARN DRIVERS OF THE PRESENT CONDITIONS. THESE ARE TO INCLUDE, BUT NOT LIMITED TO "ROUGH ROAD" W8-8, "UNEVEN LANES" W8-11, "GROOVED PAVEMENT" W8-15 w/MOTORCYCLE PLAQUE MOUNTED BELOW. THESE ARE TO BE DOUBLE INDICATED ON MULTI-LANE ROADWAYS WITH SPEED LIMITS 45 MPH AND GREATER WHERE LATERAL CLEARANCE CAN BE OBTAINED WITHIN THE MEDIAN AREAS. THESE PORTABLE SIGNS ARE INCIDENTAL TO THE OTHER ITEMS OF WORK INCLUDED IN THE TEMPORARY TRAFFIC CONTROL (LUMP SUM) PAY ITEM.

LEGEND

┆ STATIONARY SIGN

➔ DIRECTION OF TRAFFIC FLOW

RESURFACING ADVANCE WARNING SIGNS FOR URBAN / SUBURBAN FACILITIES

2/24/2014 S:\TMD\WZTC\Resurfacing\2013Documents\New-Prod\edures_05_09_2013\Resurfacing_AdvWarn_UrSub.dgn

