

Center of Bearings

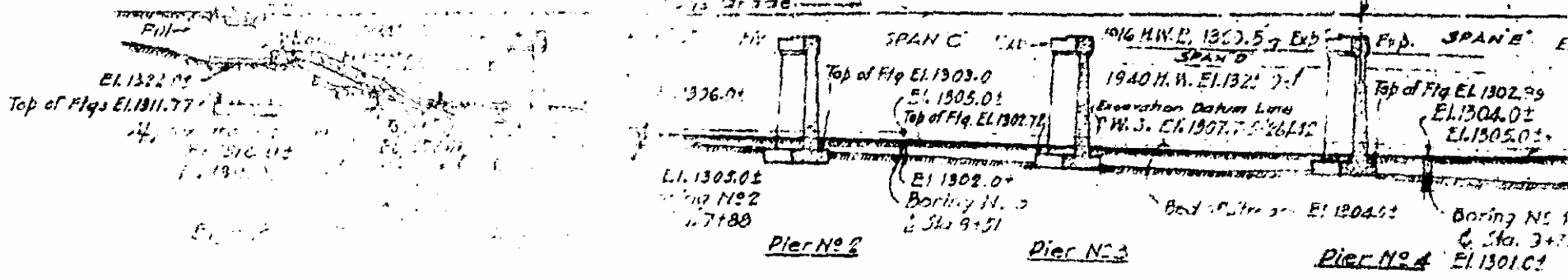
SPAN A SPAN B SPAN C SPAN D SPAN E SPAN F SPAN G SPAN H

Four Sections No. 4 & No. 6 first and then four Section No. 5

Center of Bridge Sta. 9+50

Crown of Rdwy E

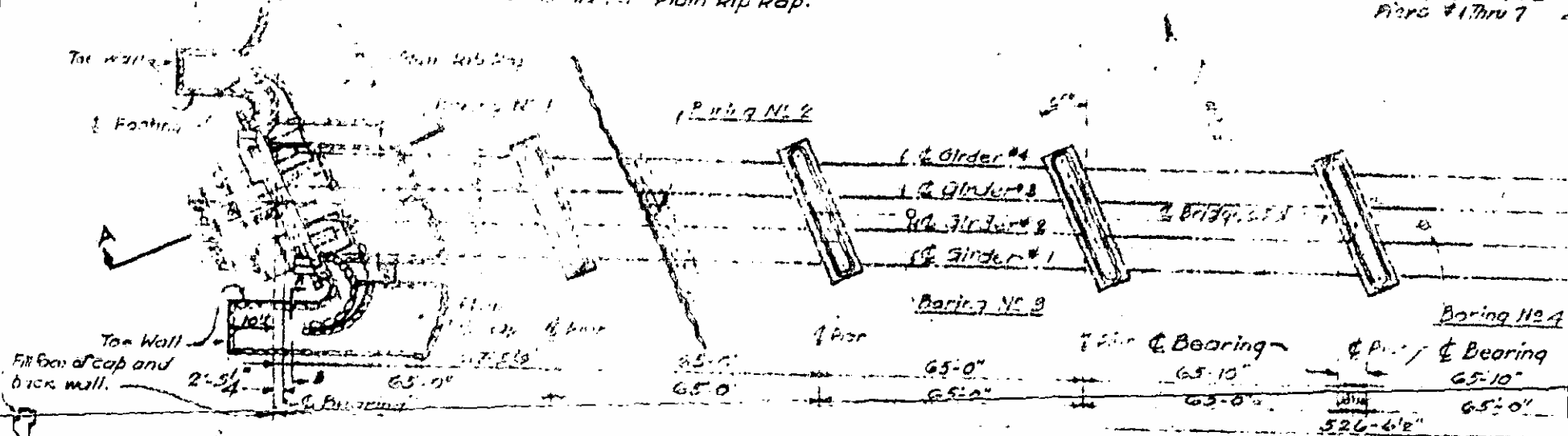
BRIDGING DIAGRAM



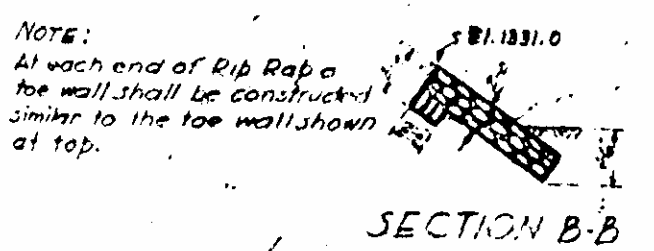
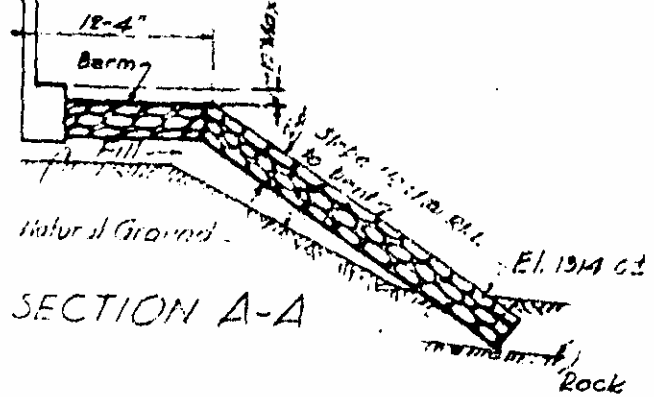
ELEVATION AT CENTER

NOTE: Computed Four End Bents #1 & 2 Piers #1 Thru 7

Rip Rap shall be depressed 6" and grouted with 1:3 cement mortar. Rip Rap area to extend to face of End Bent. Rip Rap incidental to this shall be included in estimate for Plain Rip Rap.



PLAN



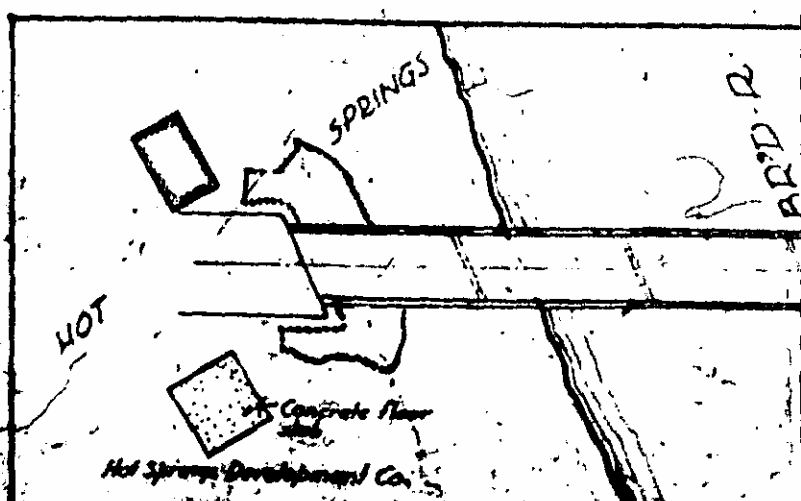
NOTE: At each end of Rip Rap toe wall shall be constructed similar to the toe wall shown at top.

	Class 'A' Concrete Cu. Yds.	Class 'B' Concrete Cu. Yds.	Reinforcing Steel Lbs.	Excavation		Plain Class 2 Rip Rap sq. Yds.	Maintenance & Removal of Exist. Struct.
				Dry Cu. Yds.	Wet Cu. Yds.		
Superstructure	1014.5		242200				
End Bent No. 1	57.6		5863	22.5		200	
Pier No. 1		22.5	728	5.5	33		
Pier No. 2		121.0	728		7.5		
Pier No. 3		22.5	728		7.5		
Pier No. 4		112.5	865		6.0		
Pier No. 5		121.0	728		3.0		
Pier No. 6		153.8	728	2.5	7.0		
Pier No. 7		121.0	728	2.5	7.0		
End Bent No. 2	57.6		8983	22.5	1.0	1000	
Total	1164.1	505.7	202303	39.5	48.5	1400	Lump Sum

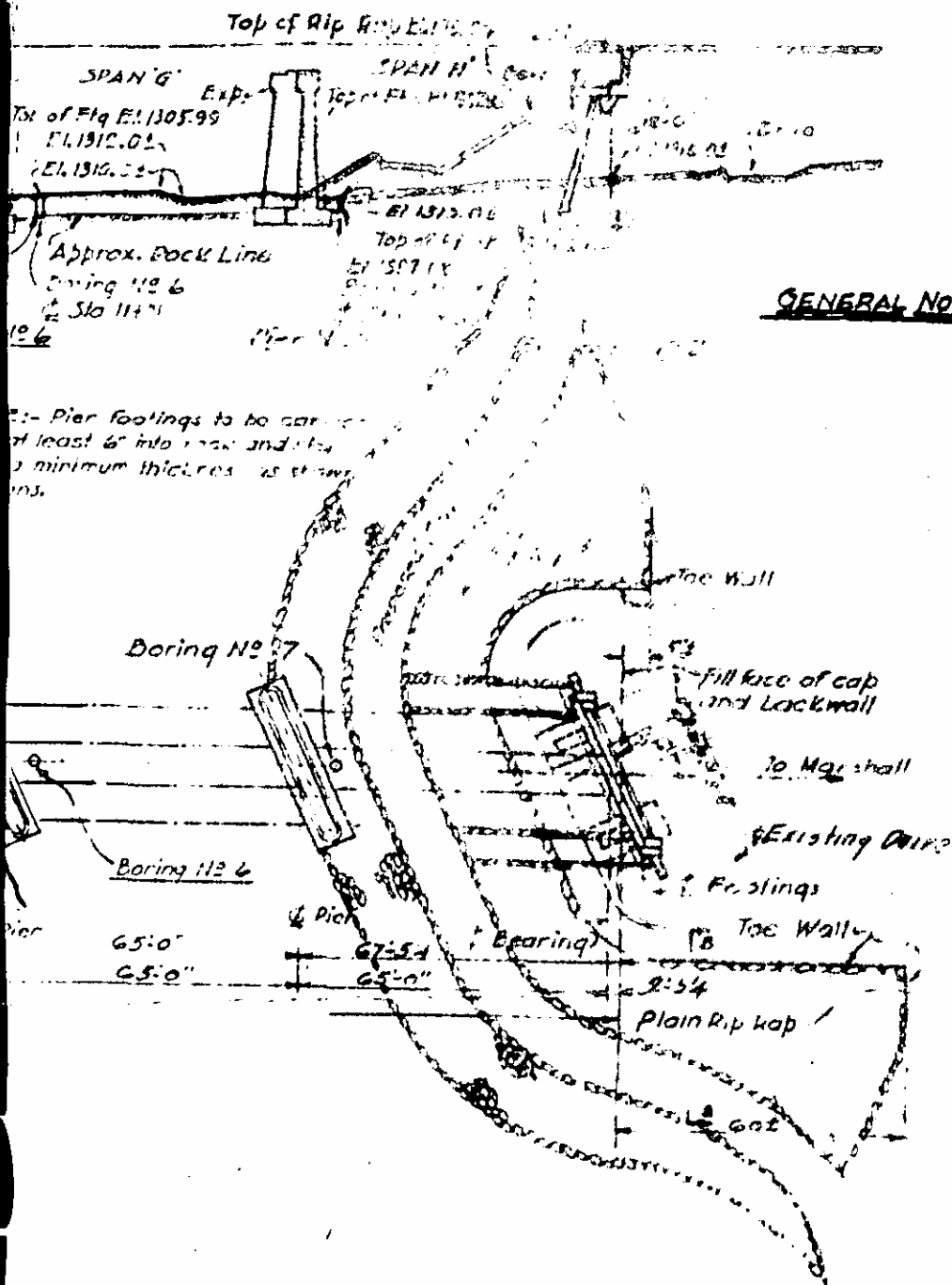
DIVISION OF CLASS 'A' CONCRETE	
Standard size No. 3 Coarse Aggregate	1108.6 Cu. Yds.
Standard size No. 4 Coarse Aggregate	55.5 Cu. Yds.
Total Class A Concrete	1164.1 Cu. Yds.

SPECIAL	DATE
Checked by G.B.W.	DATE MAR. 1942
Checked by W.S. Smethurst	DATE Oct. 1942
Checked by G.B.W.	DATE MAR. 1943

B.M. U.S.G.S. Standard Disk in top North end of pier cap - present bridge. EL. 1331.87



NOTES: This bridge is to be built on a 2% Grade. The handrails, enders, slabs and curbs shall conform to the grade. Hand rail posts and balusters shall be built plumb. The elevations shown do not include any allowance for settlement of the individual spans which should be provided for in addition to the elevations given. After the site work has been removed the finished structure shall have the elevations shown.



GENERAL NOTE:

DESIGN DATA:
 Specifications: A. A. S. H. O. 11-15
 Assumed Live Load: See Specifications
 Impact Allowance: 20000 lbs per Sq. In.
 Reinforcing Steel (Flexural): 20000 lbs per Sq. In.
 Reinforcing Steel (Web): 10000 lbs per Sq. In.
 Concrete in Compression (Substructure): 700 lbs per Sq. In.
 Concrete in Compression (Superstructure): 90 lbs per Sq. In.
 Concrete in Shear: 30 lbs per Cu Ft
 Equivalent Fluid Pressure of Earth: 30 lbs per Cu Ft

CONCRETE: Air Entraining concrete shall be used through-out for all Class "A" and Class "B" concrete. See Special Provisions, Class A in Superstructure & End Bents; Class B in Piers. Standard size No. 3 coarse aggregate shall be used except in hand rails at 2 1/2" max. of curbs in which standard size No. 4 coarse aggregate shall be used. Joints in slabs, curtain walls and curbs shall be provided in one continuous operation, allowing no time for initial set to take place between them. No construction joints other than those shown on the plans will be permitted.

REINFORCING STEEL: All reinforcing steel shall be deformed wire. All dimensions relative to reinforcement are to centers of bars. No circles of bars other than those shown on plans will be permitted. When splicing of reinforcement is necessary bars are to be lapped as directed in the specifications. Laps shall be securely held in place by hand.

MECHANICAL VIBRATION: All concrete except hand rails to be compacted by Mechanical Vibrations.

CHAMFERS: All exposed corners of concrete shall be chamfered. Chamfers on railings and expansion joints. Corners of abutment walls shall be chamfered.

NAME PLATES: Two name plates shall be placed on the right pier on each right hand end post of piers, the bridge.

FOUNDATION DATA: The excavating and foundation data and all elevations of ground line and water surface are believed to be correct and are furnished for the convenience of the bidders, but the State Highway and Public Works Commission assumes no responsibility for nor guarantees as correct any of the information given. See Sheet MATED 11-1 WORKMANSHIP: All material and workmanship shall conform to the specifications of the State Highway and Public Works Commission.

EXPANSION JOINT MATERIAL: Expansion joint material may be either rubber compound or concrete conforming to the requirements of the A. A. S. H. O. Specifications M-5B.

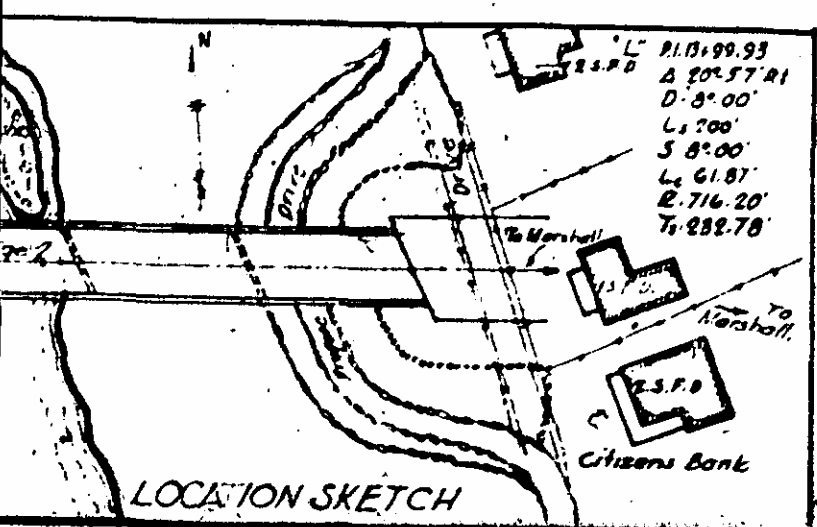
SURFACE FINISH: Concrete surfaces shall be finished in accordance with the specifications except that a Class 2 surface finish for curbs shall be given a Class 2 surface finish.

MAINTENANCE & REMOVAL OF EXISTING STRUCTURE: See Special Provisions.

Structure, built in accordance with the plans and specifications, with the exception of revisions, required to be made in construction and shown elsewhere in the estimate.

Resident Engineer

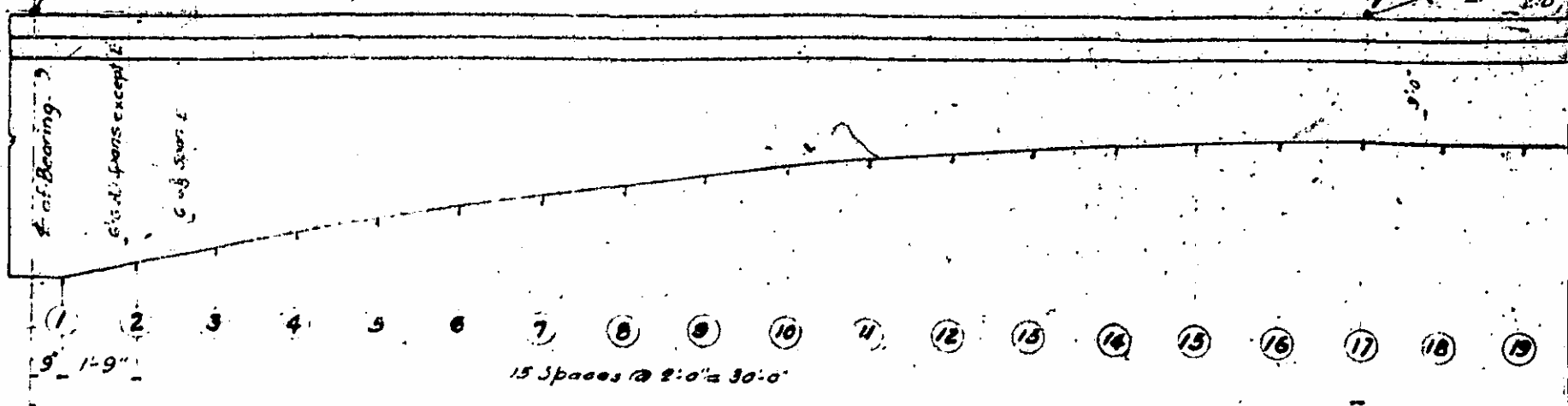
PROJECT NO. 9709
 M. DISON COUNTY
 STATION 2160



STATE OF TENNESSEE
 PUBLIC WORKS COMMISSION
 GENERAL DRAWING
 FOR
 BRIDGE OVER
 FRENCH BROAD RIVER
 OCT. 1912
 J. P. ...
 W. H. Rogers

Point on Crown of Rt. U. to girder

Point on Crown of Span



TYPICAL GIRDER ELEVATION

TABLE SHOWING ELEVATIONS OF

POINT	GIRDERS OF SPAN-A				GIRDERS OF SPAN-B				GIRDERS OF SPAN-C				GIRDERS OF SPAN-D				GIRDERS OF SPAN-E	
	1	2	3	4	1	2	3	4	1	2	3	4	1	2	3	4	1	2
1	1327.54	1327.37	1327.33	1327.32	1328.64	1328.77	1328.69	1328.62	1330.14	1330.07	1329.97	1329.82	1331.44	1331.37	1331.29	1331.22	1332.74	1332.67
2	1327.96	1327.89	1327.81	1327.73	1329.26	1329.19	1329.11	1329.04	1330.56	1330.49	1330.41	1330.34	1331.86	1331.79	1331.71	1331.64	1333.17	1333.10
3	1328.41	1328.34	1328.26	1328.19	1329.71	1329.64	1329.56	1329.49	1331.01	1330.94	1330.86	1330.79	1332.31	1332.24	1332.16	1332.09	1333.61	1333.54
4	1328.82	1328.75	1328.67	1328.60	1330.12	1330.05	1329.97	1329.90	1331.42	1331.35	1331.27	1331.20	1332.72	1332.65	1332.57	1332.50	1334.02	1333.95
5	1329.27	1329.14	1329.06	1328.99	1330.51	1330.44	1330.36	1330.29	1331.81	1331.74	1331.66	1331.59	1333.11	1333.04	1332.96	1332.89	1334.41	1334.34
6	1329.57	1329.50	1329.42	1329.35	1330.87	1330.80	1330.72	1330.65	1332.17	1332.10	1332.02	1331.95	1333.47	1333.40	1333.32	1333.25	1334.77	1334.70
7	1329.90	1329.83	1329.75	1329.68	1331.20	1331.13	1331.05	1330.98	1332.50	1332.43	1332.35	1332.28	1333.80	1333.73	1333.65	1333.58	1335.10	1335.03
8	1330.20	1330.13	1330.05	1329.98	1331.50	1331.43	1331.35	1331.28	1332.80	1332.73	1332.65	1332.58	1334.10	1334.03	1333.95	1333.88	1335.40	1335.33
9	1330.46	1330.41	1330.33	1330.26	1331.78	1331.71	1331.63	1331.56	1333.08	1333.01	1332.93	1332.86	1334.38	1334.31	1334.23	1334.16	1335.68	1335.61
10	1330.73	1330.66	1330.58	1330.51	1332.00	1331.93	1331.85	1331.78	1333.30	1333.23	1333.15	1333.08	1334.60	1334.53	1334.45	1334.38	1335.90	1335.83
11	1330.95	1330.88	1330.80	1330.73	1332.25	1332.18	1332.10	1332.03	1333.55	1333.48	1333.40	1333.33	1334.85	1334.78	1334.70	1334.63	1336.15	1336.08
12	1331.14	1331.07	1330.99	1330.92	1332.44	1332.37	1332.29	1332.22	1333.74	1333.67	1333.59	1333.52	1335.04	1334.97	1334.89	1334.82	1336.34	1336.27
13	1331.31	1331.24	1331.16	1331.09	1332.61	1332.54	1332.46	1332.39	1333.91	1333.84	1333.76	1333.69	1335.21	1335.14	1335.06	1334.99	1336.51	1336.44
14	1331.45	1331.38	1331.30	1331.23	1332.75	1332.68	1332.60	1332.53	1334.05	1333.98	1333.90	1333.83	1335.35	1335.28	1335.20	1335.13	1336.65	1336.58
15	1331.60	1331.49	1331.41	1331.34	1332.88	1332.81	1332.73	1332.66	1334.18	1334.11	1334.03	1333.96	1335.48	1335.41	1335.33	1335.26	1336.77	1336.70
16	1331.64	1331.57	1331.49	1331.42	1332.94	1332.87	1332.79	1332.72	1334.24	1334.17	1334.09	1334.02	1335.54	1335.47	1335.39	1335.32	1336.83	1336.76
17	1331.69	1331.62	1331.54	1331.47	1332.99	1332.92	1332.84	1332.77	1334.29	1334.22	1334.14	1334.07	1335.59	1335.52	1335.44	1335.37	1336.87	1336.80
18	1331.72	1331.65	1331.57	1331.50	1333.02	1332.95	1332.87	1332.80	1334.32	1334.25	1334.17	1334.10	1335.62	1335.55	1335.47	1335.40	1336.91	1336.84
19	1331.72	1331.65	1331.57	1331.50	1333.02	1332.95	1332.87	1332.80	1334.32	1334.25	1334.17	1334.10	1335.62	1335.55	1335.47	1335.40	1336.91	1336.84
20	1331.69	1331.62	1331.54	1331.47	1332.99	1332.92	1332.84	1332.77	1334.29	1334.22	1334.14	1334.07	1335.59	1335.52	1335.44	1335.37	1336.87	1336.80
21	1331.63	1331.56	1331.48	1331.41	1332.93	1332.86	1332.78	1332.71	1334.23	1334.16	1334.08	1334.01	1335.53	1335.46	1335.38	1335.31	1336.81	1336.74
22	1331.63	1331.56	1331.48	1331.41	1332.93	1332.86	1332.78	1332.71	1334.23	1334.16	1334.08	1334.01	1335.53	1335.46	1335.38	1335.31	1336.81	1336.74
23	1331.44	1331.37	1331.29	1331.22	1332.74	1332.67	1332.59	1332.52	1334.04	1333.97	1333.89	1333.82	1335.34	1335.27	1335.19	1335.12	1336.63	1336.56
24	1331.50	1331.43	1331.35	1331.28	1332.80	1332.73	1332.65	1332.58	1334.10	1334.03	1333.95	1333.88	1335.40	1335.33	1335.25	1335.18	1336.69	1336.62
25	1331.13	1331.06	1330.98	1330.91	1332.43	1332.36	1332.28	1332.21	1333.73	1333.66	1333.58	1333.51	1335.03	1334.96	1334.88	1334.81	1336.33	1336.26
26	1330.93	1330.86	1330.78	1330.71	1332.23	1332.16	1332.08	1332.01	1333.53	1333.46	1333.38	1333.31	1334.83	1334.76	1334.68	1334.61	1336.13	1336.06
27	1330.71	1330.64	1330.56	1330.49	1332.01	1331.94	1331.86	1331.79	1333.31	1333.24	1333.16	1333.09	1334.61	1334.54	1334.46	1334.39	1335.91	1335.84
28	1330.46	1330.39	1330.31	1330.24	1331.76	1331.69	1331.61	1331.54	1333.06	1332.99	1332.91	1332.84	1334.36	1334.29	1334.21	1334.14	1335.66	1335.59
29	1330.18	1330.11	1330.03	1329.96	1331.48	1331.41	1331.33	1331.26	1332.78	1332.71	1332.63	1332.56	1334.08	1334.01	1333.93	1333.86	1335.38	1335.31
30	1329.87	1329.80	1329.72	1329.65	1331.17	1331.10	1331.02	1330.95	1332.47	1332.40	1332.32	1332.25	1333.77	1333.70	1333.62	1333.55	1335.07	1335.00
31	1329.56	1329.47	1329.39	1329.32	1330.84	1330.77	1330.69	1330.62	1332.14	1332.07	1331.99	1331.92	1333.44	1333.37	1333.29	1333.22	1334.74	1334.67
32	1329.18	1329.11	1329.03	1328.96	1330.48	1330.41	1330.33	1330.26	1331.78	1331.71	1331.63	1331.56	1333.08	1333.01	1332.93	1332.86	1334.38	1334.31
33	1328.84	1328.77	1328.69	1328.62	1330.14	1330.07	1329.99	1329.92	1331.44	1331.37	1331.29	1331.22	1332.74	1332.67	1332.59	1332.52	1334.04	1333.97

NOTE - Loading along stations girder No. 1 will be the exterior girder on right of roadway, girder No. 2 will be the interior girder on right of roadway, girder No. 3 will be the interior girder on left of roadway and girder No. 4 will be the exterior girder on left of roadway.

DESIGNED BY	DATE
C.D.R.	Oct. 1942.
CHECKED BY	DATE
G.Y.S.	Nov. 1942.
APPROVED BY	DATE
G.D.W.	" "

Point on Crown of R/L to girder
 2.0' grade

Point on Crown of R/L to girder

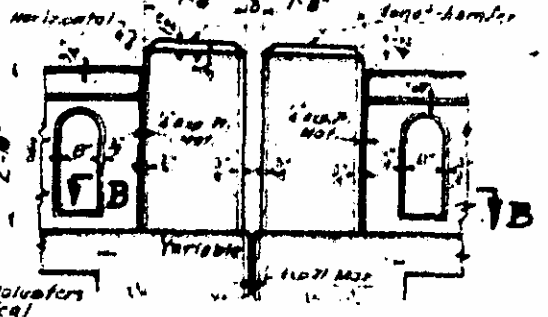
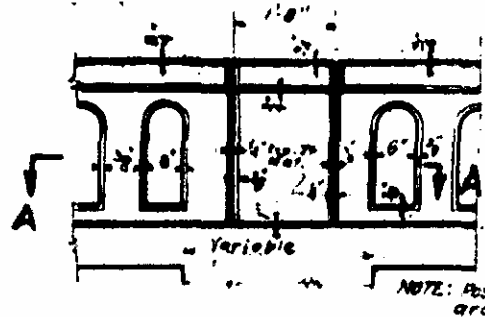
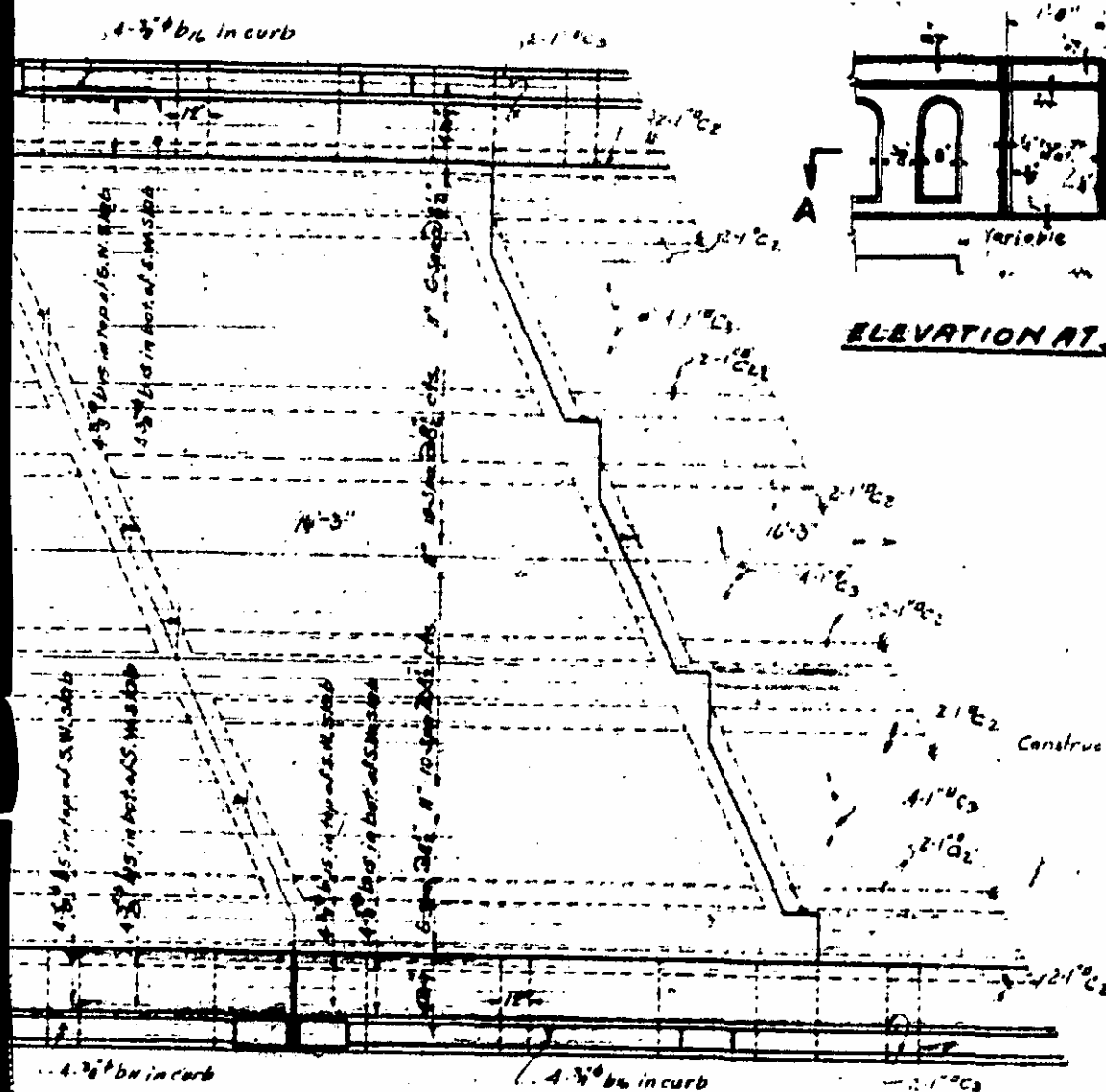
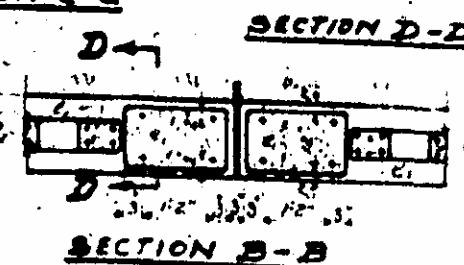
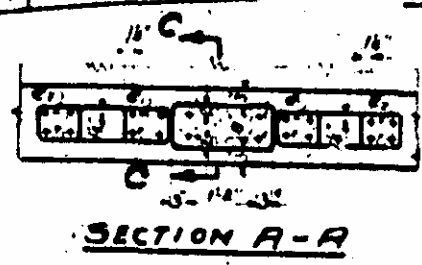
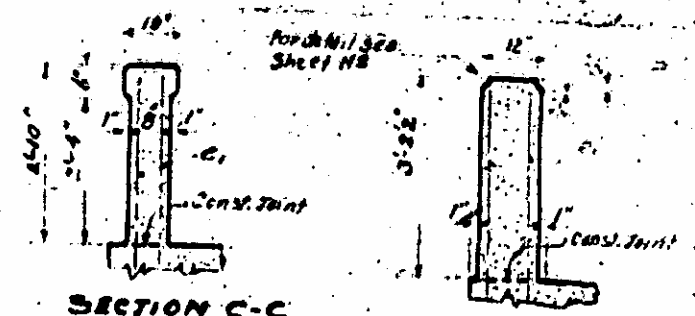
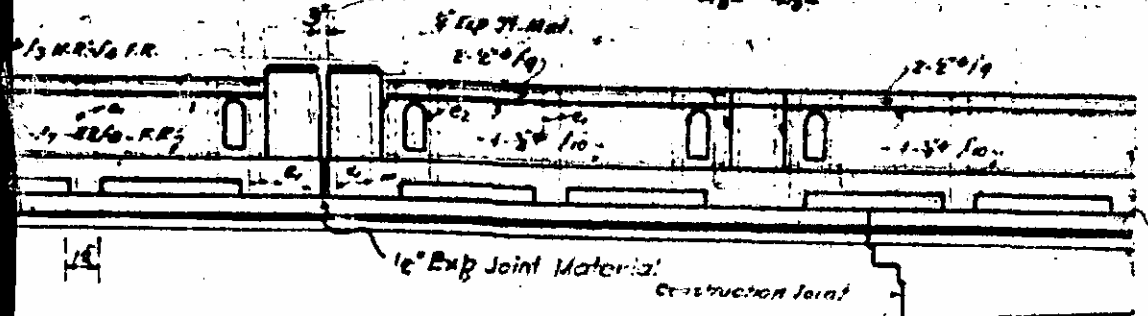


GIRDER ELEVATION

ELEVATIONS OF BOTTOMS OF GIRDERS

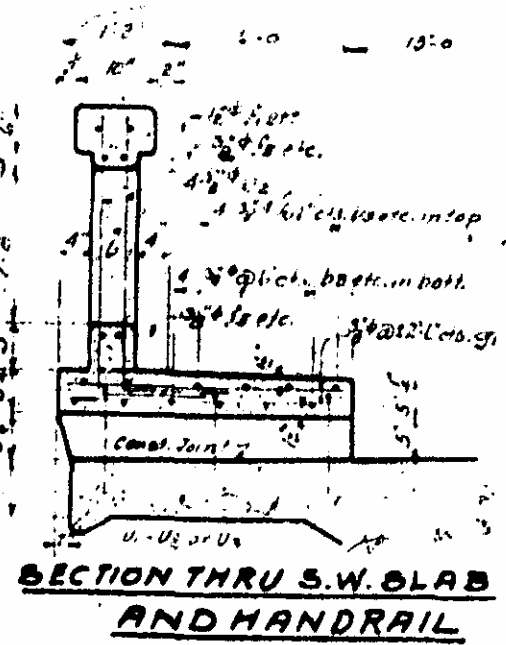
GIRDERS OF SPAN-D				GIRDERS OF SPAN-E				GIRDERS OF SPAN-F				GIRDERS OF SPAN-G				GIRDERS OF SPAN-H			
1	2	3	4	1	2	3	4	1	2	3	4	1	2	3	4	1	2	3	4
131.44	1331.37	1331.29	1331.22	1332.74	1332.67	1332.59	1332.52	1334.08	1334.01	1333.93	1333.86	1335.38	1335.31	1335.23	1335.16	1336.68	1336.61	1336.53	1336.46
131.86	1331.79	1331.71	1331.64	1333.17	1333.10	1333.02	1332.95	1334.50	1334.43	1334.35	1334.28	1335.80	1335.73	1335.65	1335.58	1337.10	1337.03	1336.95	1336.88
132.31	1332.24	1332.16	1332.09	1333.63	1333.56	1333.48	1333.41	1334.95	1334.88	1334.80	1334.73	1336.25	1336.18	1336.10	1336.03	1337.55	1337.48	1337.40	1337.33
132.72	1332.63	1332.57	1332.50	1334.04	1333.97	1333.90	1333.83	1335.36	1335.29	1335.21	1335.14	1336.66	1336.59	1336.51	1336.44	1337.96	1337.89	1337.81	1337.74
133.11	1333.04	1332.96	1332.89	1334.44	1334.37	1334.30	1334.23	1335.75	1335.68	1335.60	1335.53	1337.05	1336.98	1336.90	1336.83	1338.35	1338.28	1338.20	1338.13
133.47	1333.40	1333.32	1333.25	1334.80	1334.73	1334.66	1334.59	1336.11	1336.04	1335.96	1335.89	1337.41	1337.34	1337.26	1337.19	1338.71	1338.64	1338.56	1338.49
133.80	1333.73	1333.65	1333.58	1335.13	1335.06	1334.99	1334.91	1336.44	1336.37	1336.29	1336.22	1337.74	1337.67	1337.59	1337.52	1339.04	1338.97	1338.89	1338.82
134.10	1334.03	1333.95	1333.88	1335.43	1335.36	1335.28	1335.21	1336.74	1336.67	1336.59	1336.52	1338.04	1337.97	1337.89	1337.82	1339.34	1339.27	1339.19	1339.12
134.50	1334.31	1334.23	1334.16	1335.71	1335.64	1335.56	1335.49	1337.02	1336.95	1336.87	1336.80	1338.32	1338.25	1338.17	1338.10	1340.00	1339.93	1339.85	1339.78
134.83	1334.66	1334.58	1334.51	1336.06	1335.99	1335.91	1335.84	1337.37	1337.30	1337.22	1337.15	1338.67	1338.60	1338.52	1338.45	1340.34	1340.27	1340.19	1340.12
135.04	1334.97	1334.89	1334.82	1336.37	1336.30	1336.22	1336.15	1337.69	1337.62	1337.54	1337.47	1338.99	1338.92	1338.84	1338.77	1340.63	1340.56	1340.48	1340.41
135.21	1335.14	1335.06	1334.99	1336.64	1336.57	1336.49	1336.42	1337.95	1337.88	1337.80	1337.73	1339.25	1339.18	1339.10	1339.03	1340.90	1340.83	1340.75	1340.68
135.88	1335.88	1335.80	1335.73	1336.60	1336.53	1336.45	1336.38	1337.99	1337.92	1337.84	1337.77	1339.29	1339.22	1339.14	1339.07	1340.94	1340.87	1340.79	1340.72
135.44	1335.39	1335.31	1335.24	1336.79	1336.72	1336.64	1336.57	1338.10	1338.03	1337.95	1337.88	1339.40	1339.33	1339.25	1339.18	1341.04	1340.97	1340.89	1340.82
135.84	1335.47	1335.39	1335.32	1336.87	1336.80	1336.72	1336.65	1338.18	1338.11	1338.03	1337.96	1339.48	1339.41	1339.33	1339.26	1341.12	1341.05	1340.97	1340.90
135.59	1335.52	1335.44	1335.37	1336.92	1336.85	1336.77	1336.70	1338.23	1338.16	1338.08	1338.01	1339.50	1339.43	1339.35	1339.28	1341.18	1341.11	1341.03	1340.96
135.62	1335.85	1335.77	1335.70	1336.95	1336.88	1336.80	1336.73	1338.26	1338.19	1338.11	1338.04	1339.53	1339.46	1339.38	1339.31	1341.24	1341.17	1341.09	1341.02
135.67	1335.83	1335.75	1335.68	1336.94	1336.87	1336.79	1336.72	1338.25	1338.18	1338.10	1338.03	1339.52	1339.45	1339.37	1339.30	1341.23	1341.16	1341.08	1341.01
135.59	1335.82	1335.74	1335.67	1336.93	1336.86	1336.78	1336.71	1338.24	1338.17	1338.09	1338.02	1339.51	1339.44	1339.36	1339.29	1341.22	1341.15	1341.07	1341.00
135.83	1335.44	1335.36	1335.29	1336.86	1336.79	1336.71	1336.64	1338.17	1338.10	1338.02	1337.95	1339.47	1339.40	1339.32	1339.25	1341.17	1341.10	1341.02	1340.95
135.44	1335.38	1335.30	1335.23	1336.78	1336.71	1336.63	1336.56	1338.09	1338.02	1337.94	1337.87	1339.43	1339.36	1339.28	1339.21	1341.13	1341.06	1340.98	1340.91
135.34	1335.27	1335.19	1335.12	1336.67	1336.60	1336.52	1336.45	1337.98	1337.91	1337.83	1337.76	1339.39	1339.32	1339.24	1339.17	1341.09	1341.02	1340.94	1340.87
135.20	1335.13	1335.05	1334.98	1336.53	1336.46	1336.38	1336.31	1337.84	1337.77	1337.69	1337.62	1339.28	1339.21	1339.13	1339.06	1341.03	1340.96	1340.88	1340.81
135.03	1334.96	1334.88	1334.81	1336.36	1336.29	1336.21	1336.14	1337.67	1337.60	1337.52	1337.45	1339.14	1339.07	1338.99	1338.92	1340.94	1340.87	1340.79	1340.72
134.83	1334.76	1334.68	1334.61	1336.16	1336.09	1336.01	1335.94	1337.47	1337.40	1337.32	1337.25	1339.07	1339.00	1338.92	1338.85	1340.87	1340.80	1340.72	1340.65
134.67	1335.56	1335.48	1335.41	1336.96	1336.89	1336.81	1336.74	1337.87	1337.80	1337.72	1337.65	1339.17	1339.10	1339.02	1338.95	1340.97	1340.90	1340.82	1340.75
134.36	1334.89	1334.81	1334.74	1336.69	1336.62	1336.54	1336.47	1337.90	1337.83	1337.75	1337.68	1339.20	1339.13	1339.05	1338.98	1341.00	1340.93	1340.85	1340.78
134.00	1334.01	1333.93	1333.86	1336.01	1335.94	1335.86	1335.79	1337.22	1337.15	1337.07	1337.00	1338.52	1338.45	1338.37	1338.30	1340.80	1340.73	1340.65	1340.58
133.77	1333.70	1333.62	1333.55	1335.70	1335.63	1335.55	1335.48	1337.04	1336.97	1336.89	1336.82	1338.34	1338.27	1338.19	1338.12	1340.60	1340.53	1340.45	1340.38
133.44	1333.37	1333.29	1333.22	1335.37	1335.30	1335.22	1335.15	1336.79	1336.72	1336.64	1336.57	1338.09	1338.02	1337.94	1337.87	1340.50	1340.43	1340.35	1340.28
133.00	1333.01	1332.93	1332.86	1335.01	1334.94	1334.86	1334.79	1336.43	1336.36	1336.28	1336.21	1337.73	1337.66	1337.58	1337.51	1340.40	1340.33	1340.25	1340.18
132.74	1332.67	1332.59	1332.52	1334.64	1334.57	1334.49	1334.42	1336.06	1335.99	1335.91	1335.84	1337.36	1337.29	1337.21	1337.14	1340.30	1340.23	1340.15	1340.08

along stations girder No.1 will be the exterior girder on right of & of
 der No.2 will be the interior girder on right of & of roadway, girder
 be interior girder on left of & of roadway and girder No.4 will be the
 der on left of & of roadway.



ELEVATION AT INT. POST

ELEVATION AT PIER POST

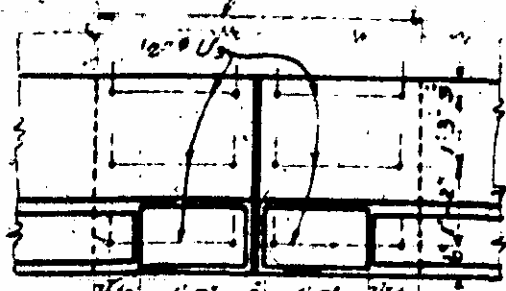
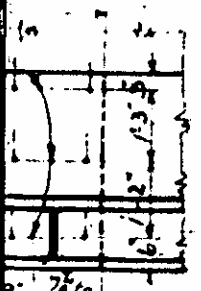


SECTION THRU S.W. SLAB AND HANDRAIL

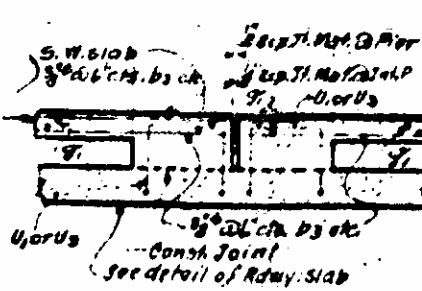
PROJECT NO 9709
MADISON COUNTY
STATION: 9+60

TEEL
(NAME BY ROTATION)

ection and shall be made to line with outside



DETAIL PLAN AT DOUBLE POST



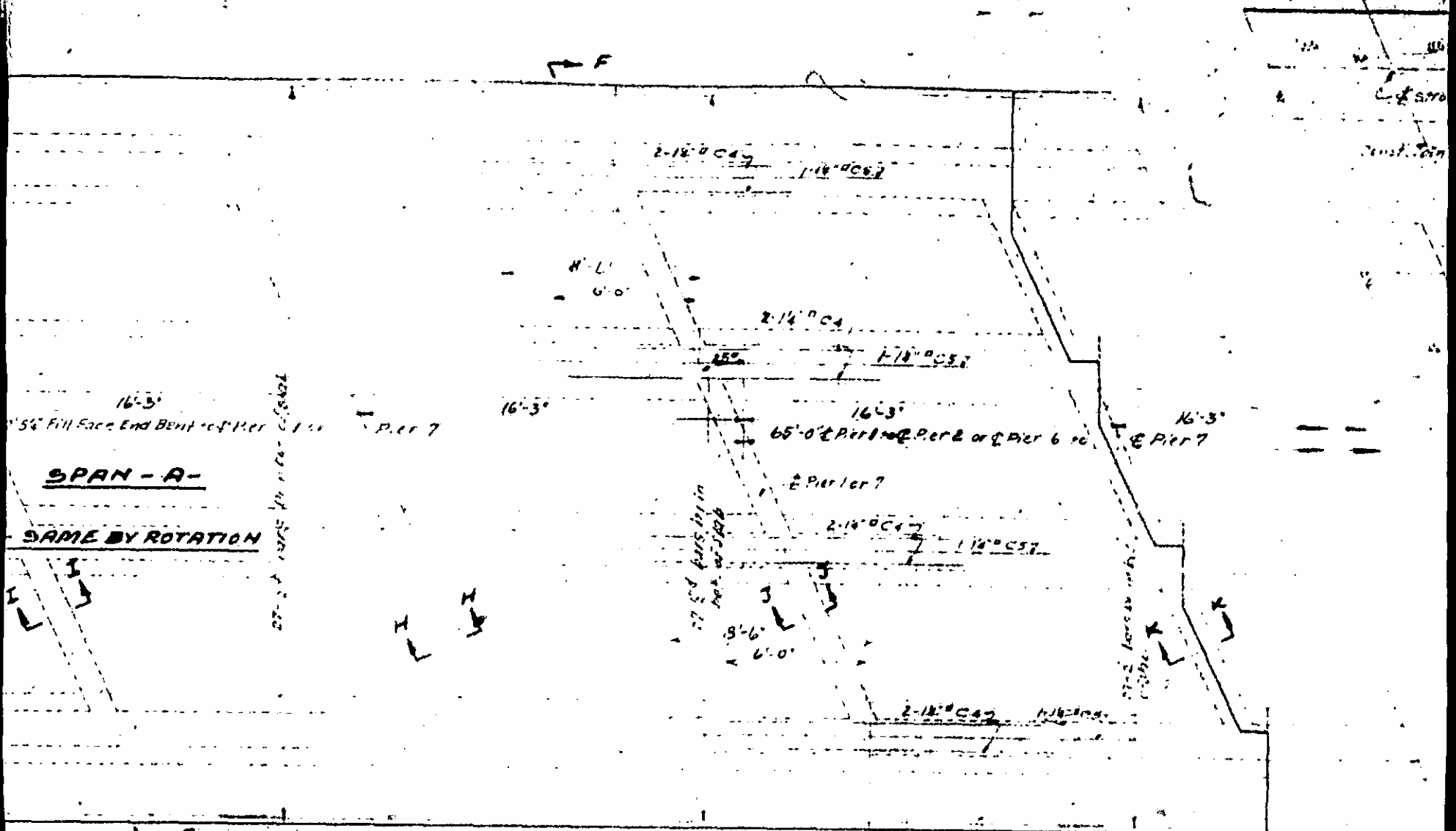
SECTION THRU S.W. SLAB AT EXP POST

STATE OF N.C.
STATE HIGHWAY
PUBLIC WORKS COMMISSION
SUPERSTRUCTURE DETAILS
FOR
HOT SPRINGS BRIDGE
OVER FRENCH BROAD RIVER
NOVEMBER 1942

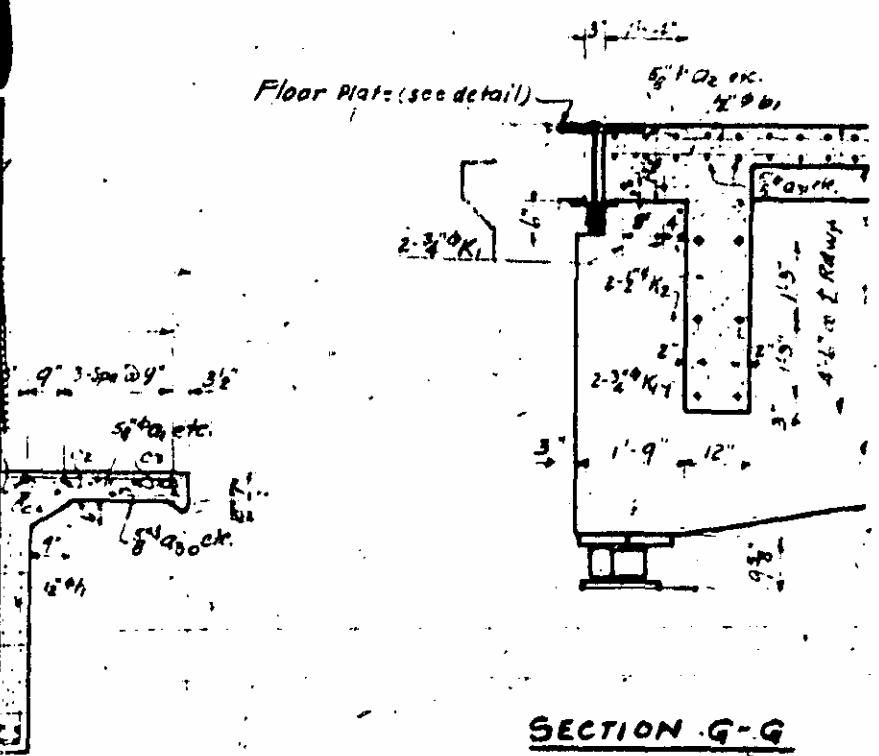
Handwritten signatures and notes at the bottom right of the page.



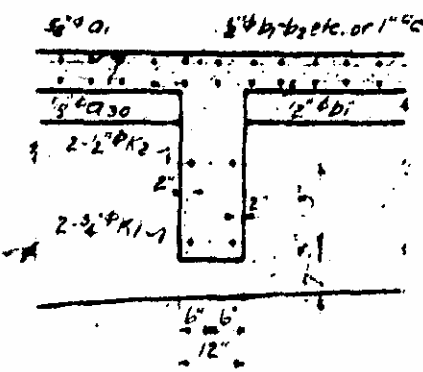
2-6" cts. @ 30 in bot. of slab



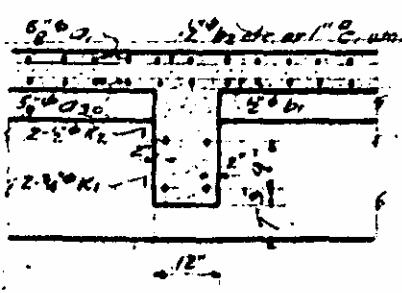
PLAN OF UNIT-1 SHOWING REINFORCING STEEL (UNIT-6-SAME BY ROTATION)
 BOTTOM OF ROADWAY SLAB (S.W. SLAB AND CURB REMOVED)



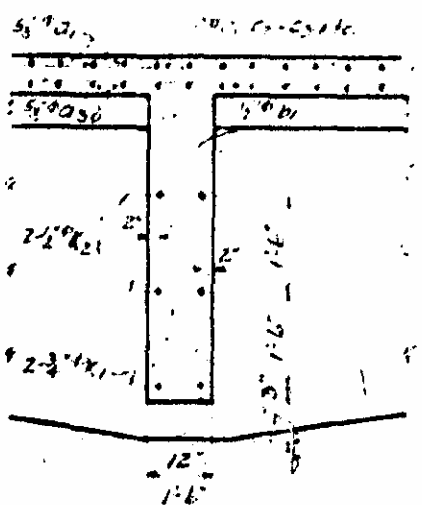
SECTION G-G



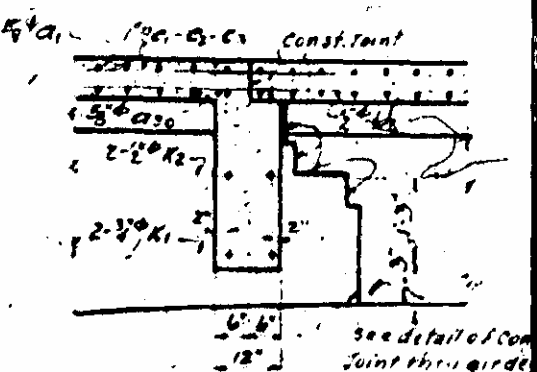
SECTION H-H



SECTION I-I

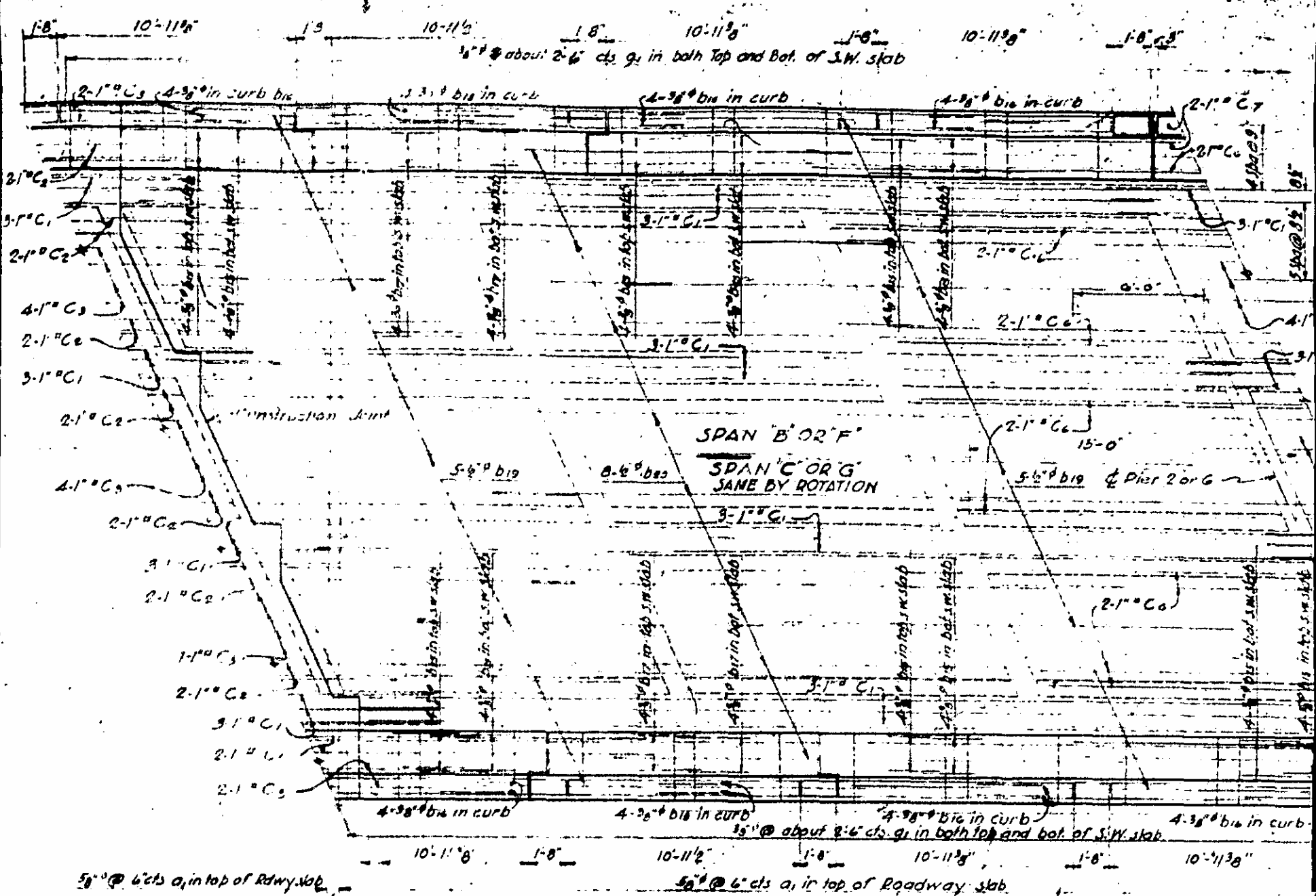


SECTION J-J

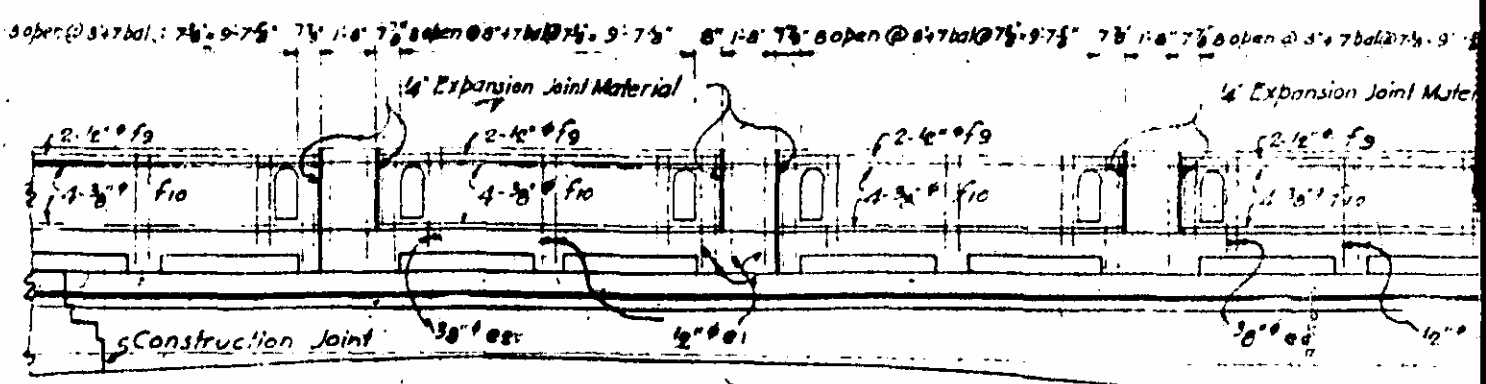


SECTION K-K

see detail of Con Joint thru girde



HALF PLAN OF UNIT 2 OR 5 SHOWING REINFORCING STEEL IN TOP OF ROADWAY SLAB & S.W.



HALF ELEVATION OF UNIT 2, OR 5

NOTE: Drip mould to extend bridge on both sides

SPECIAL
 DESIGNED BY: G.P.E.
 CHECKED BY: W.S.S.
 DRAWN BY: G.P.K.
 DATE: Oct. 1942
 DATE: Nov. 1942
 DATE: NOV 1942
 DATE: DEC 1942

DETAIL OF

10-11 3/8"

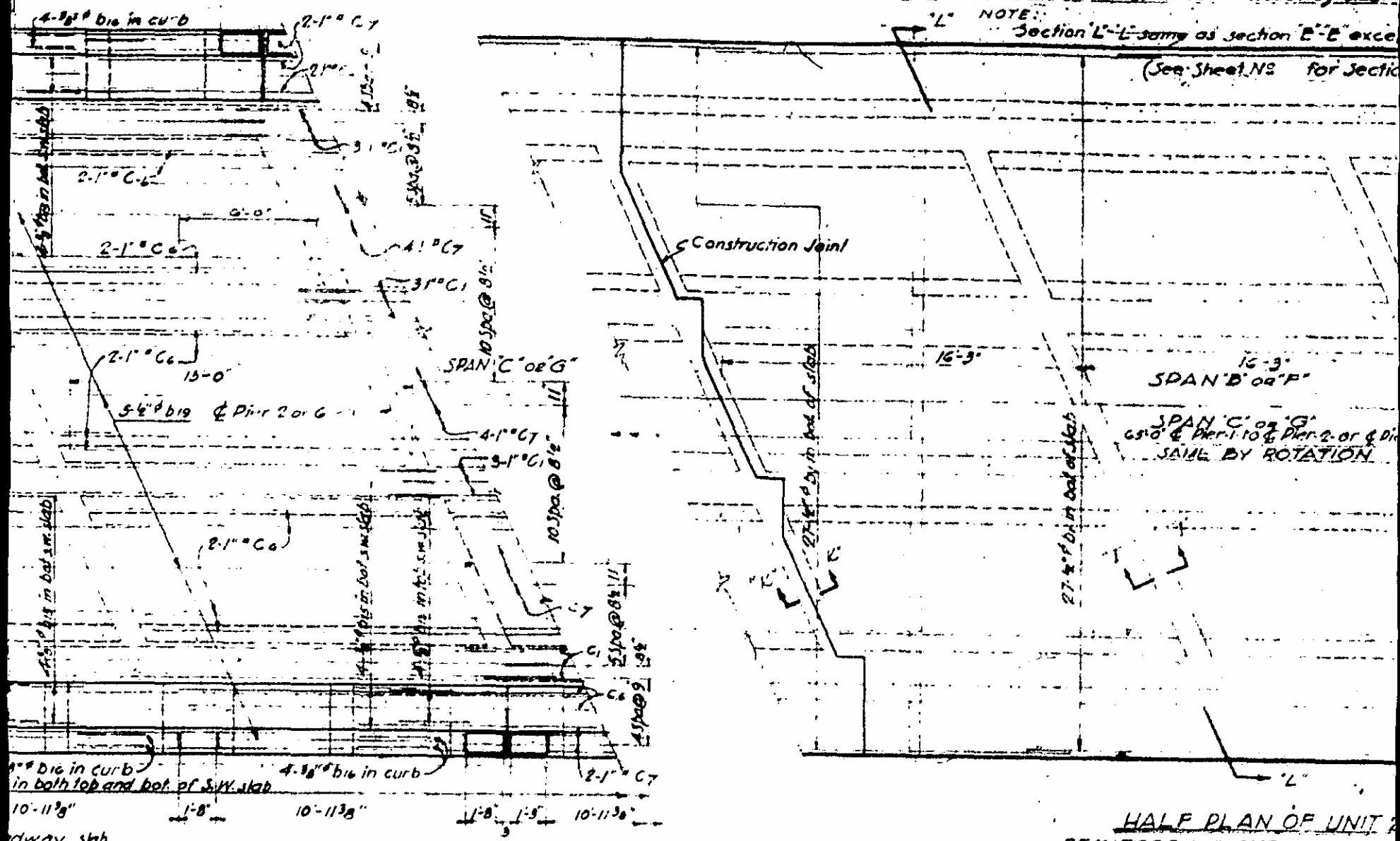
1-8" C3

5/8" @ 4" c/c in bot. of Roadway slab

5/8" @ 6" c/c in bot. of Roadway slab

NOTE: Section L-L same as section E-E except

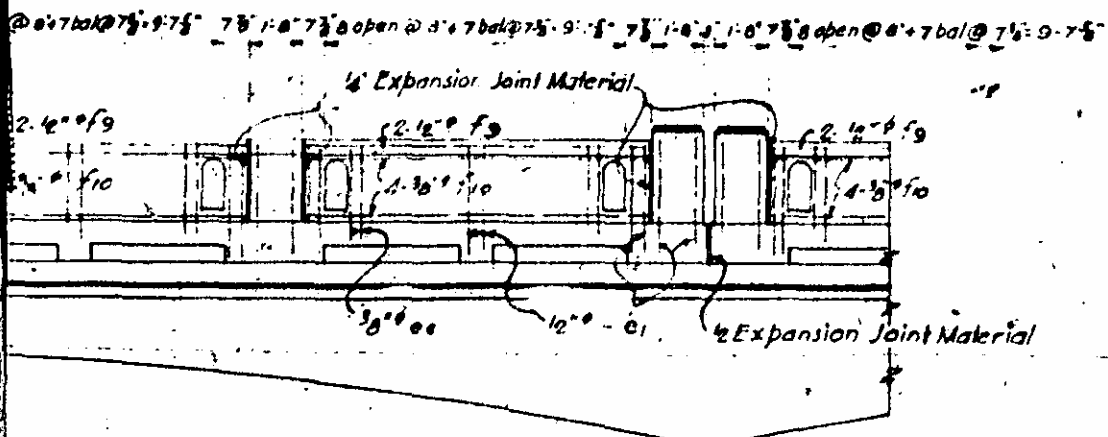
(See Sheet NS for Section)



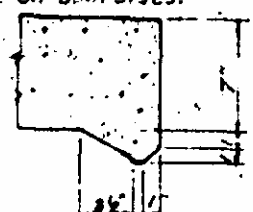
HALF PLAN OF UNIT
REINFORCING STEEL IN B.T.
(SIDEWALK & SLAB AND CURB ETC)

NOTE
For "Design Data" and General
For Superstructure details notes
Nos. 5.3 5.4 5.5 5.7 5.8

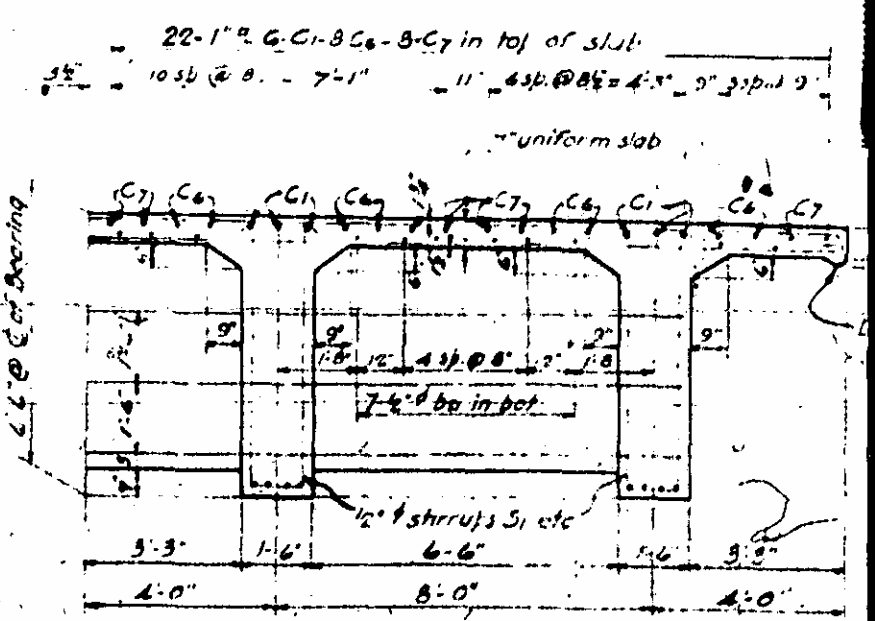
OR 5 SHOWING
OF ROADWAY SLAB & S.W.



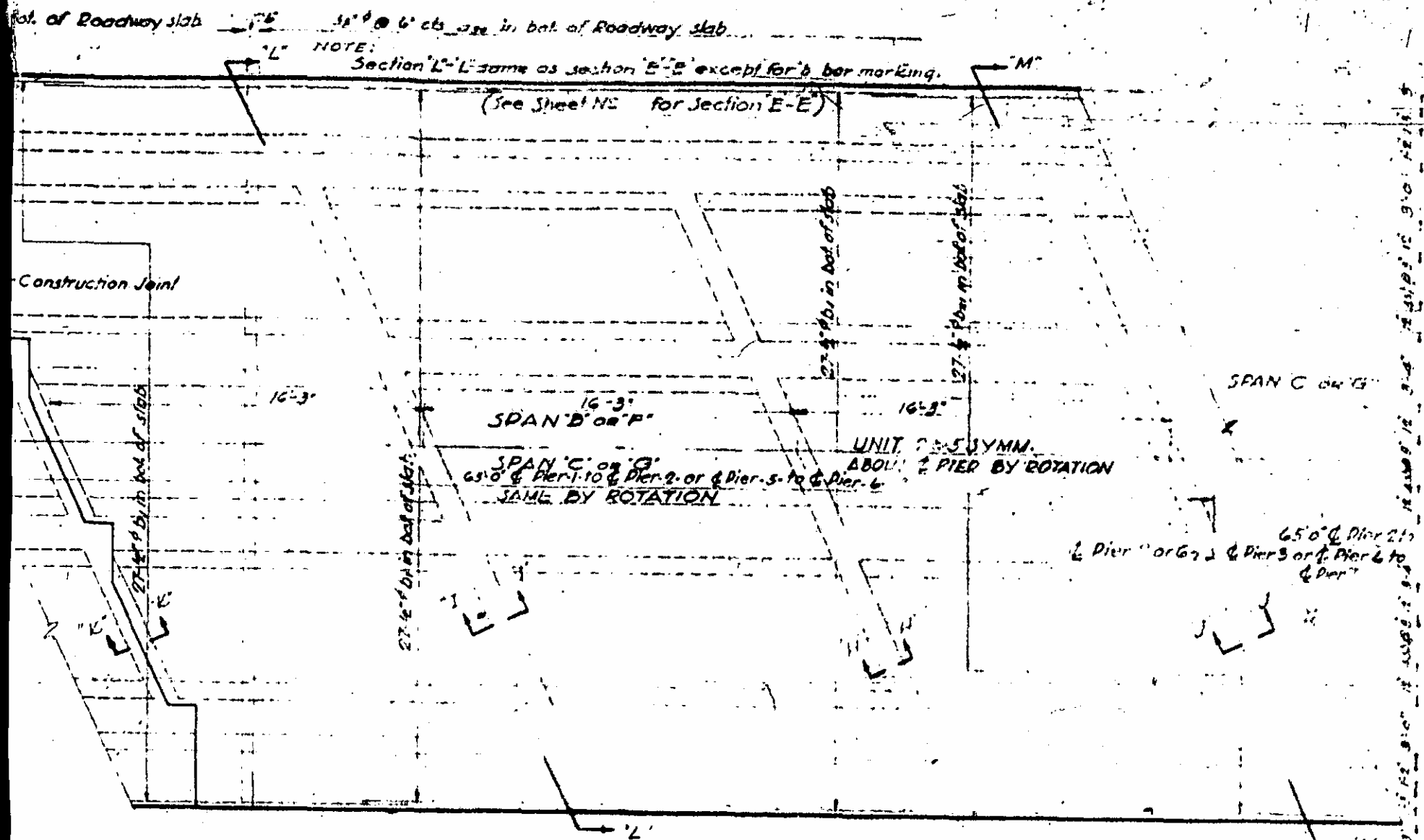
NOTE:
Drip mould to extend full length of
bridge on both sides.



DETAIL OF DRIP MOULD

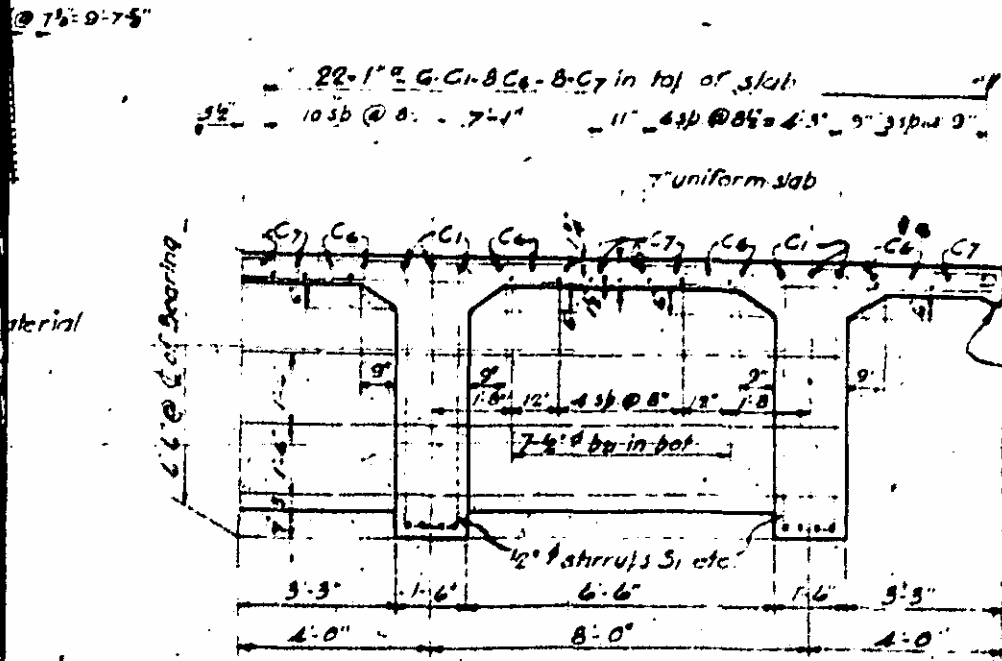


HALF SECTION "M"-M



HALF PLAN OF UNIT 2 OR 5 SHOWING REINFORCING STEEL IN BOTTOM OF ROADWAY SLAB
(SIDEWALK SLAB AND CURB REMOVED)

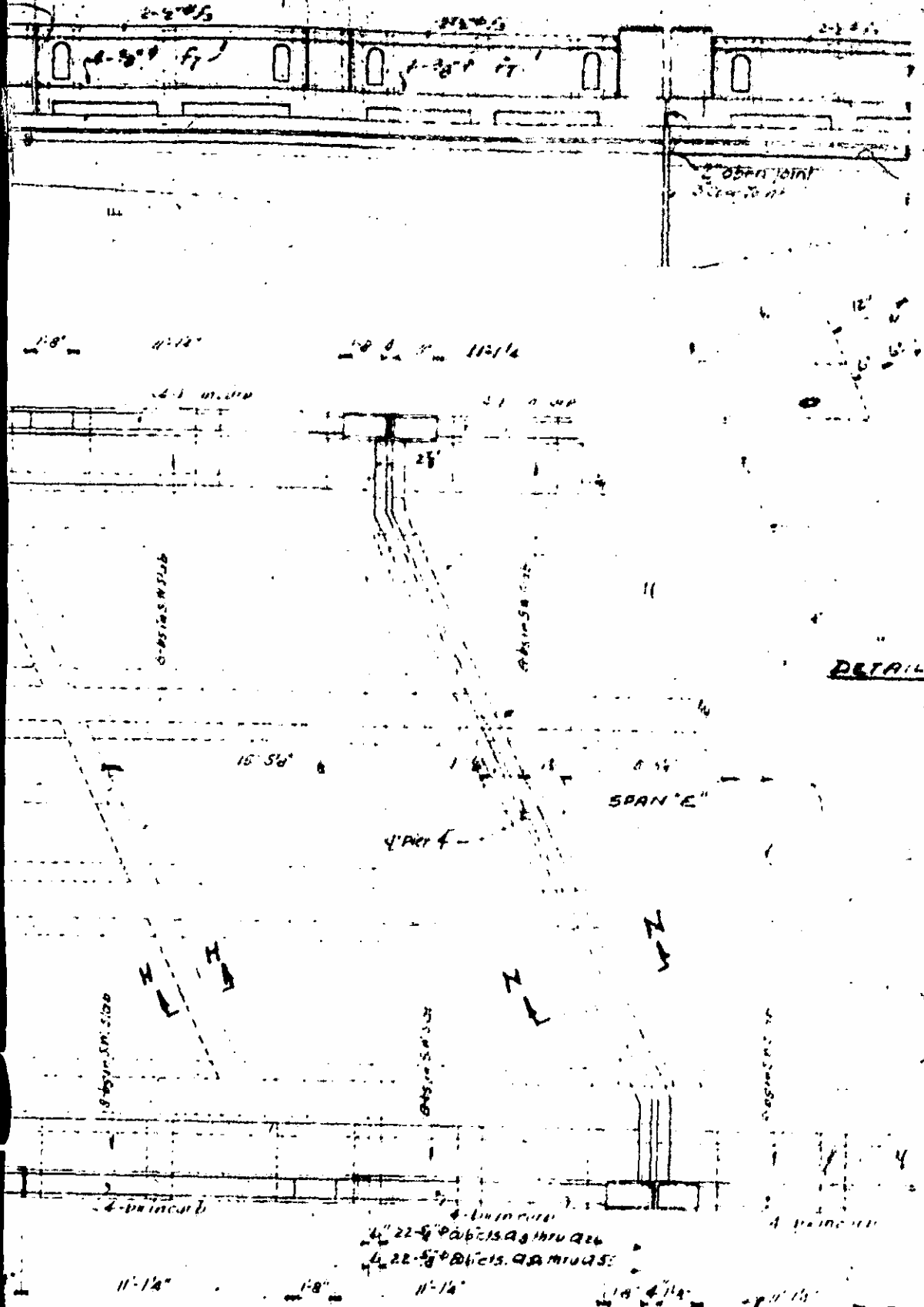
NOTE
For "Design Data" and General Note see General Drawing.
For Superstructure details not shown on this sheet see Sheets
112.5-3 5-4 5-6 5-7 & 5-8



HALF SECTION "M"-M

PROJECT NO 9709
MADISON COUNTY
STATION: 9 + 60

STATE OF NORTH CAROLINA
STATE HIGHWAY
PUBLIC WORKS COMMISSION
SUPERSTRUCTURE DETAILS
FOR
HOT SPRINGS BRIDGE
OVER FRENCH BROAD RIVER
NOVEMBER 1942.



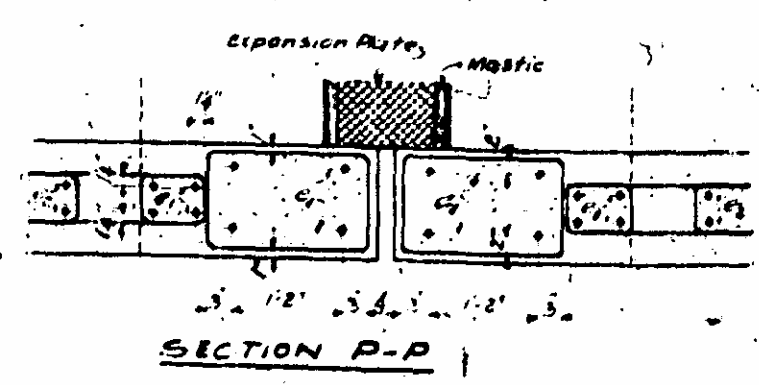
DETAIL PLAN AT INTERIOR GIRDER
STEEL PLATE REMOVED



DETAIL PLAN AT EXTERIOR GIRDER
STEEL PLATE REMOVED

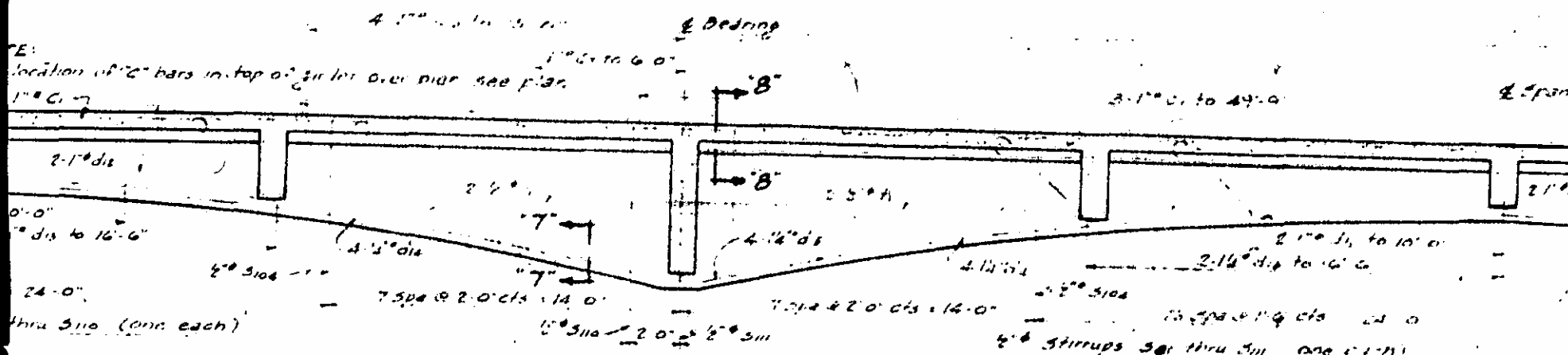
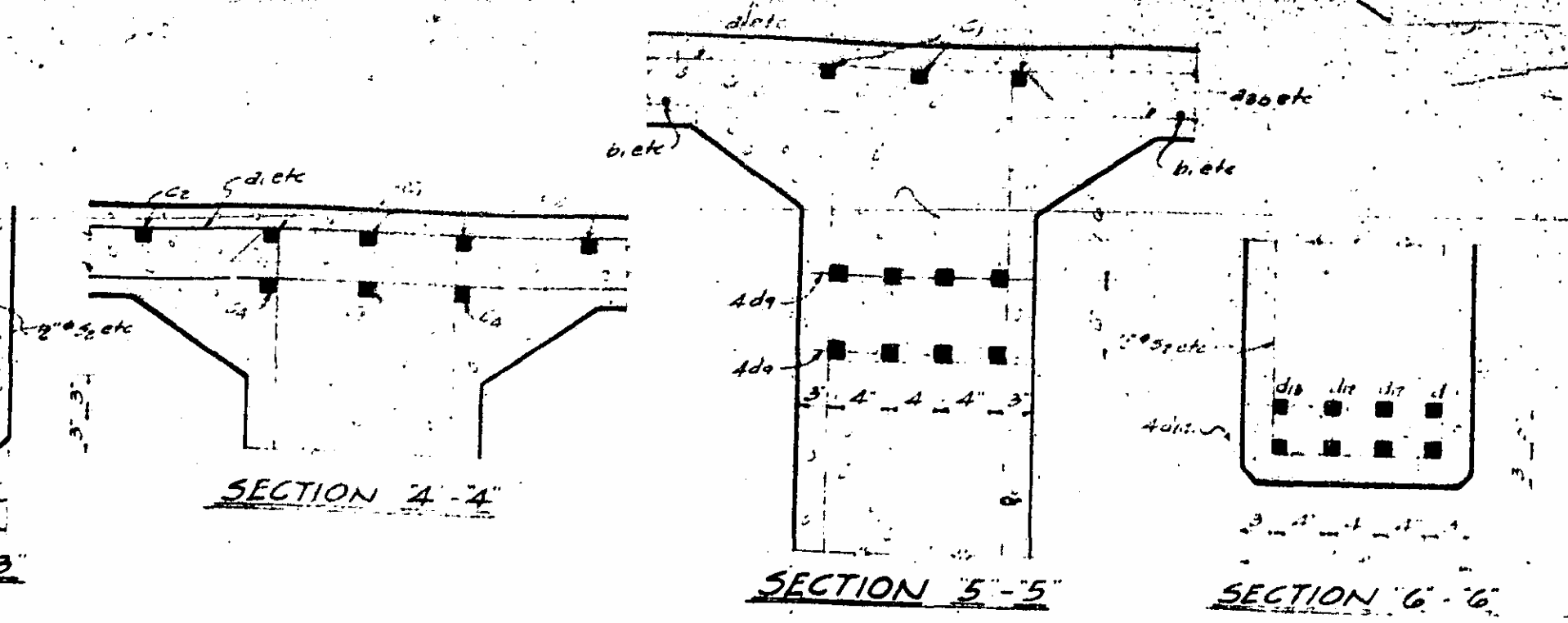
NOTE:
 For Design Data and General Note See General Drawing
 For Superstructure details not shown on this sheet
 See sheets Nos. 5-3-5-4-5-5-5-7-8-5-8
 FOR SECTION E-E, F-F, H-H, I-I & K-K
 SEE SHEET NOS 3 & 4

PROJECT NO 9709
 MADISON COUNTY
 STATION: 9+60

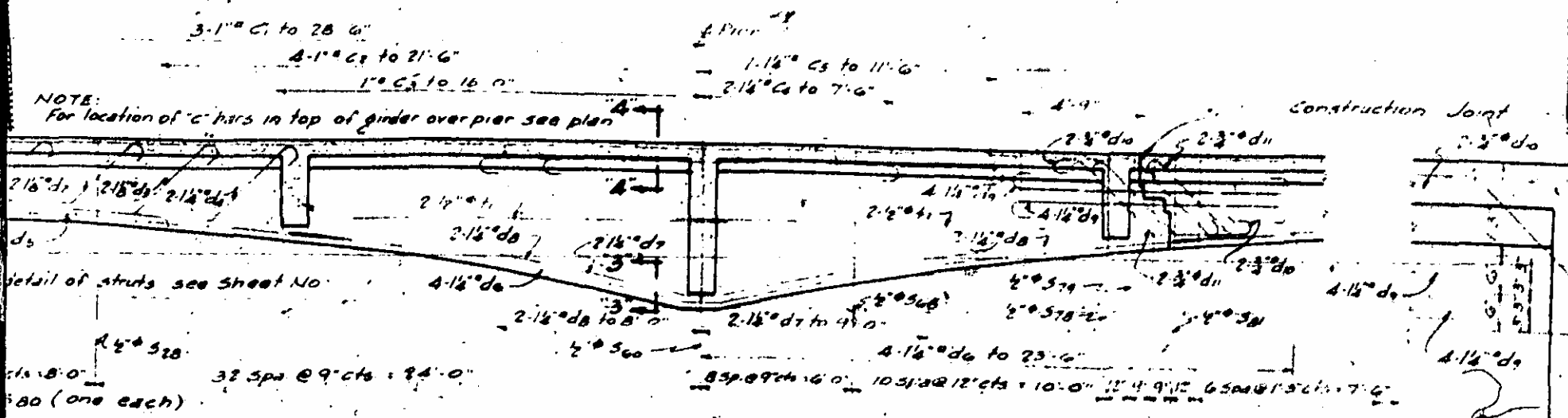


STATE OF MISSISSIPPI
 STATE HIGHWAY
 PUBLIC WORKS COMMISSION
 SUPERSTRUCTURE DETAILS
 FOR
 HOT SPRINGS BRIDGE
 OVER FRENCH BRAD RIVER
 NOVEMBER 1942



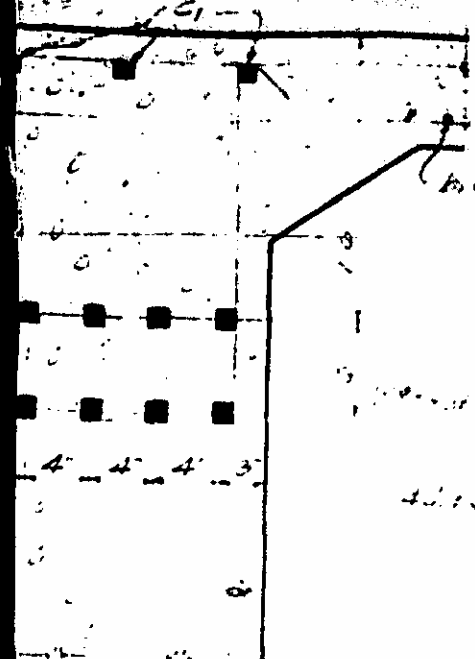


GIRDER DETAIL FOR UNIT 2 OR 5
 (4 LINES OF GIRDERS REQUIRED FOR EACH UNIT)

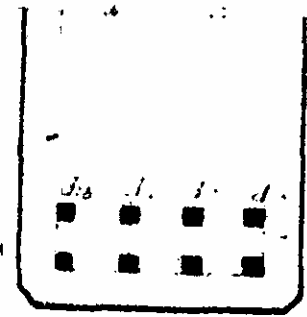


GIRDER DETAIL FOR UNIT 1 OR 4
 (SAME BY ROTATION)
 (4 LINES OF GIRDERS REQUIRED FOR EACH UNIT)

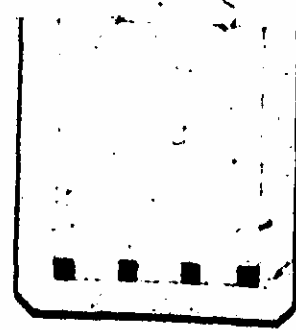
DETAIL
 CONSTRUCTION



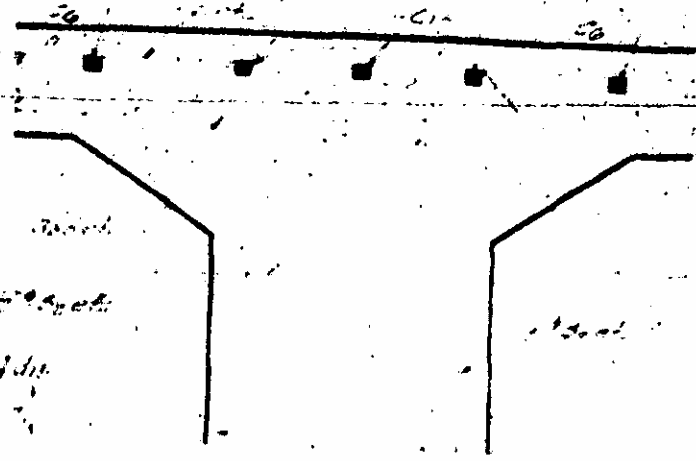
SECTION 5-5



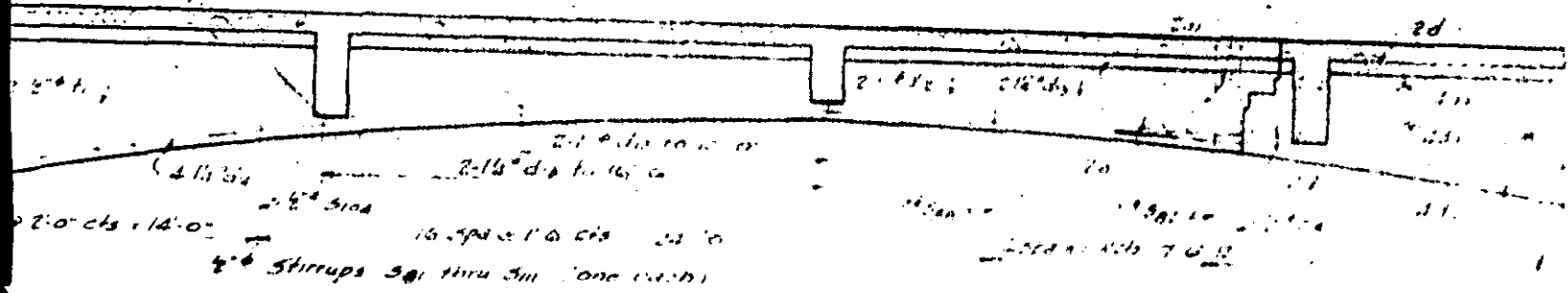
SECTION 6-6



SECTION 7-7

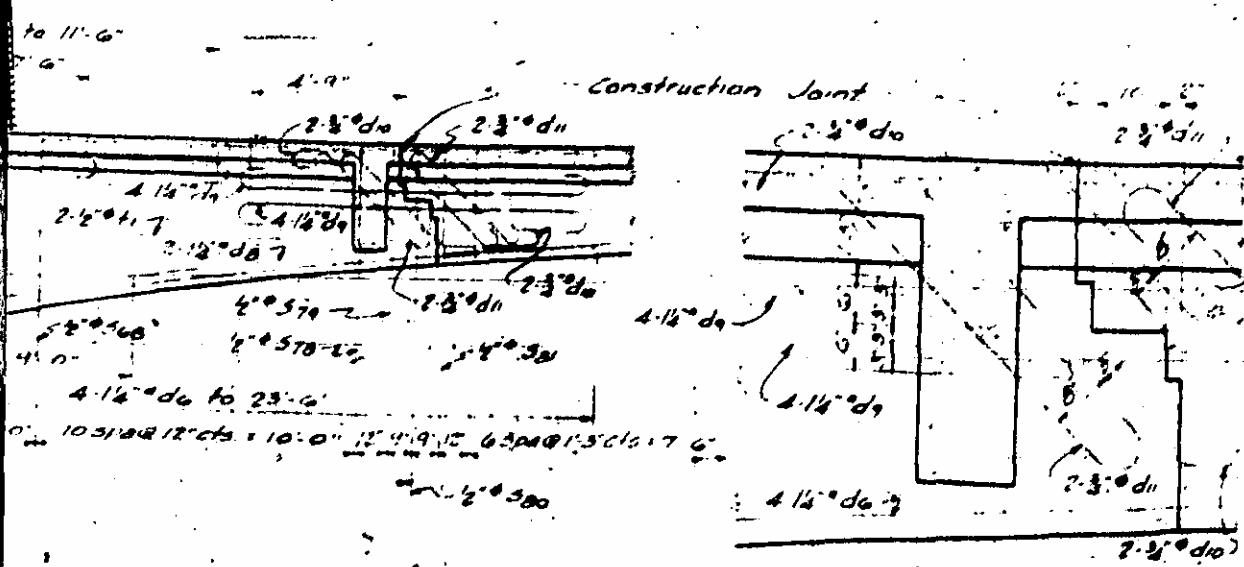


SECTION 8-8



UNIT 2 OR 5
(OR EACH UNIT)

NOTE:
 For "Design Data" and General Note see
 General Drawing
 For Superstructure details not shown on
 this sheet see sheets Nos. 1, 2, 3, 4, 5, 6, 7, 8, 9



DETAIL AT
CONSTRUCTION JOINT

PROJECT NO 9709
 MADISON COUNTY
 STATION. 9+60

STATE OF ARIZONA
 STATE HIGHWAY AND
 PUBLIC WORKS COMMISSION
SUPERSTRUCTURE DETAILS
FOR
HOT SPRINGS BRIDGE
OVER
FRENCH BROAD RIVER
DECEMBER 1942

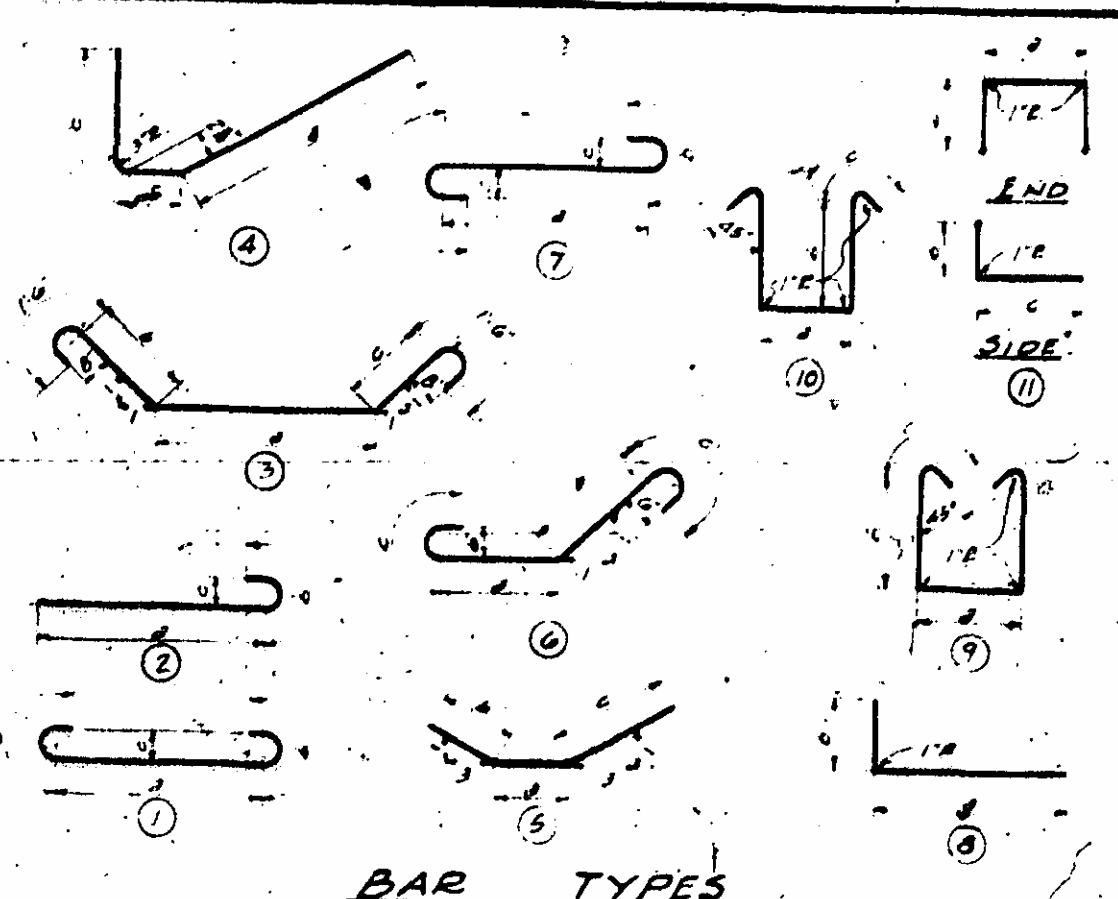
PLAN
NO

Height	Weight	Bar	Type	Dimensions			NO Bars Per Unit						Total Bars	Length	Weight
				a	b	c	1	2	3	4	5	6			
7'-0"	2380	500	10	1'-1 1/2"	5'-2 1/2"	4"	4	4	4	4	4	4	16	12'-3"	131
7'-0"	3825	507			5'-0 1/2"	4"	4	4	4	4	4	4	16	12'-0"	128
7'-0"	4005	508			4'-11"	4"	4	4	4	4	4	4	16	11'-8"	125
7'-0"	413	509			4'-8 1/2"	4"	4	4	4	4	4	4	16	11'-6"	121
7'-0"	681	510			4'-6 1/2"	4"	4	4	4	4	4	4	16	11'-0"	118
7'-0"	1965	571			4'-4 1/2"	4"	4	4	4	4	4	4	16	10'-8"	114
7'-0"	5902	572			4'-2 1/2"	4"	4	4	4	4	4	4	16	10'-4"	110
7'-0"	14020	573			4'-1"	4"	4	4	4	4	4	4	16	10'-0"	108
7'-0"	3480	574			3'-11 1/2"	4"	4	4	4	4	4	4	16	9'-9"	104
7'-0"	3992	570			3'-9 1/2"	4"	4	4	4	4	4	4	16	9'-5"	101
7'-0"	3068	577			3'-8"	4"	4	4	4	4	4	4	16	9'-2"	98
7'-0"		578			3'-5 1/2"	4"	4	4	4	4	4	4	16	8'-11"	97
7'-0"	29	579			3'-3 1/2"	4"	4	4	4	4	4	4	16	8'-8"	93
7'-0"	30	580			3'-3"	4"	4	4	4	4	4	4	16	8'-6"	91
7'-0"	405	581			3'-1 1/2"	4"	4	4	4	4	4	4	16	8'-4"	89
7'-0"	121	582			3'-0 1/2"	4"	4	4	4	4	4	4	16	8'-2"	87
7'-0"	32	583			2'-11 1/2"	4"	4	4	4	4	4	4	16	8'-0"	86
7'-0"	33	584			2'-10 1/2"	4"	4	4	4	4	4	4	16	7'-4"	83
7'-0"	450	585			2'-9 1/2"	4"	4	4	4	4	4	4	16	7'-4"	81
7'-0"	130	586			2'-8 1/2"	4"	4	4	4	4	4	4	16	7'-8"	79
7'-0"	570	587			2'-7 1/2"	4"	4	4	4	4	4	4	16	7'-5"	77
7'-0"	642	588			2'-7"	4"	4	4	4	4	4	4	16	7'-1"	76
7'-0"		589			2'-6 1/2"	4"	4	4	4	4	4	4	16	7'-0"	75
7'-0"		590			2'-6"	4"	4	4	4	4	4	4	16	6'-11"	74
7'-0"	979	591			2'-5 1/2"	4"	4	4	4	4	4	4	16	6'-10"	73
7'-0"		592			2'-5"	4"	4	4	4	4	4	4	16	6'-10"	73
7'-0"	3139	593			2'-4 1/2"	4"	4	4	4	4	4	4	16	6'-10"	73
7'-0"	1617	594			2'-4 1/2"	4"	4	4	4	4	4	4	16	6'-11"	73
7'-0"		595			2'-4 1/2"	4"	4	4	4	4	4	4	16	7'-0"	75
7'-0"		596			2'-4 1/2"	4"	4	4	4	4	4	4	16	7'-1"	76
7'-0"	147	598			2'-9 1/2"	4"	4	4	4	4	4	4	16	7'-3"	77
7'-0"	137	599			2'-10 1/2"	4"	4	4	4	4	4	4	16	7'-5"	79
7'-0"	129	5100			3'-0 1/2"	4"	4	4	4	4	4	4	16	7'-8"	82
7'-0"	121	5101			3'-1 1/2"	4"	4	4	4	4	4	4	16	7'-11"	85
7'-0"	112	5102			3'-3 1/2"	4"	4	4	4	4	4	4	16	8'-5"	87
7'-0"	107	5103			3'-3 1/2"	4"	4	4	4	4	4	4	16	8'-6"	87
7'-0"	101	5104			3'-3 1/2"	4"	4	4	4	4	4	4	16	8'-10"	93
7'-0"	95	5105			3'-11 1/2"	4"	4	4	4	4	4	4	16	9'-7"	97
7'-0"	47	5106			4'-2 1/2"	4"	4	4	4	4	4	4	16	1'-11"	108
7'-0"	86	5107			4'-6 1/2"	4"	4	4	4	4	4	4	16	10'-4"	110
7'-0"	83	5108			4'-11"	4"	4	4	4	4	4	4	16	11'-0"	115
7'-0"	80	5109			6'-8 1/2"	4"	4	4	4	4	4	4	16	11'-8"	125
7'-0"	78	5110			5'-8 1/2"	4"	4	4	4	4	4	4	16	12'-5"	133
7'-0"	77	5111	10	1'-7 1/2"	6'-0"	4"	4	4	4	4	4	4	16	12'-3"	142
7'-0"	75						4					4	8	15'-10"	147
7'-0"	74														
7'-0"	73	u	11	1'-2 1/2"	1'-7"	1'-0"	23	20	20	20	40	23	150	3'-4"	591
7'-0"	73	u8	11	6"	1'-1"	1'-0"	47	64	43	44	64	47	310	4'-8"	967
7'-0"	73	u3	11	2'-0"	1'-1"	1'-0"	30	24	36	36	24	30	180	6'-2"	741
7'-0"	74														
7'-0"	75														
7'-0"	76														
7'-0"	77														
7'-0"	78														
7'-0"	79														
7'-0"	80														
7'-0"	81														
7'-0"	83														
7'-0"	84														
7'-0"	86														
7'-0"	88														
7'-0"	90														
7'-0"	92														
7'-0"	93														
7'-0"	97														
7'-0"	100														
7'-0"	102														
7'-0"	103														
7'-0"	106														
7'-0"	109														
7'-0"	111														
7'-0"	114														
7'-0"	117														
7'-0"	119														
7'-0"	122														
7'-0"	123														
7'-0"	128														
7'-0"	131														
7'-0"	135														
7'-0"	137														
7'-0"	141														
7'-0"	148														
7'-0"	148														
7'-0"	148														
7'-0"	141														
7'-0"	137														
7'-0"	135														

Total Reinforcing Steel Lbs = 263,472
 Class A Concrete Cu Yds = 1014.5

DIVISION OF CLASS A CONCRETE
 Std Size No 3 Coarse Aggregate = 961.6 Cu Yds
 Std Size No 4 Coarse Aggregate = 52.9 Cu Yds
 Total Class A Concrete = 1014.5 Cu Yds

NOTE
 For 'Design Data' and 'General Note' see General & Spec. G.
 For Superstructure Details not shown on this sheet see Sheet Nos. 9709-2 to 9709-5 & 9709-7.

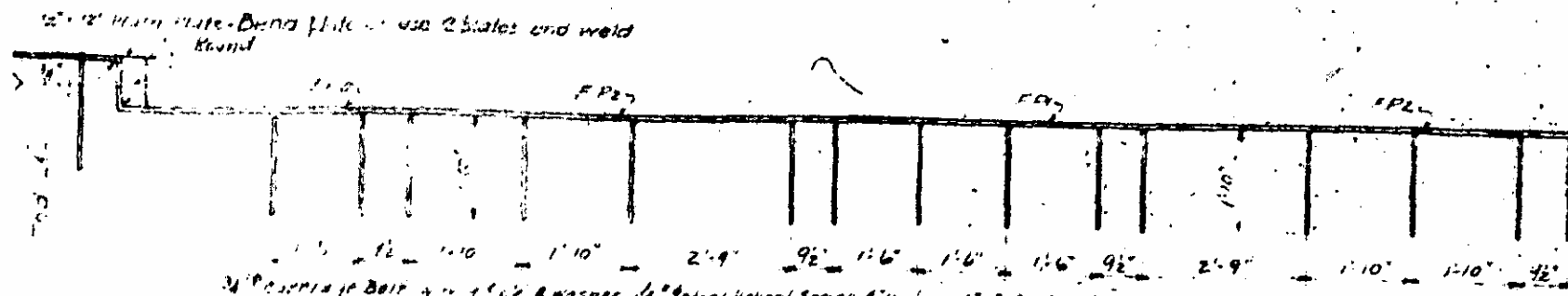


BAR TYPES

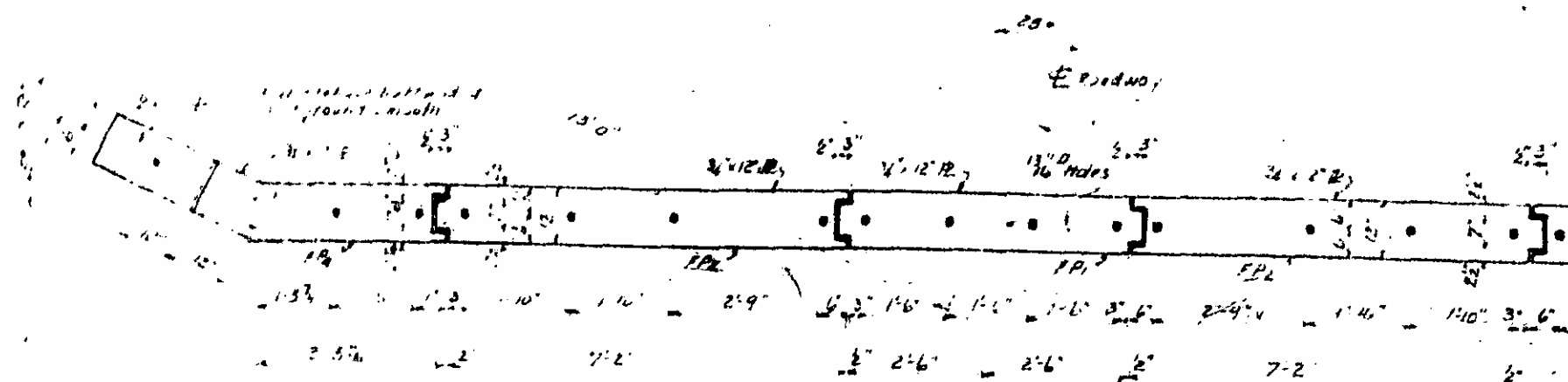
PROJECT NO 9709
 MADISON COUNTY
 STATION 9+60

STATE HIGHWAY
 PUBLIC WORKS COMMISSION
SUPERSTRUCTURE DETAILS
 FOR
 HOT SPRINGS BRIDGE
 OVER
 FRENCH BROAD RIVER
 DECEMBER 1942



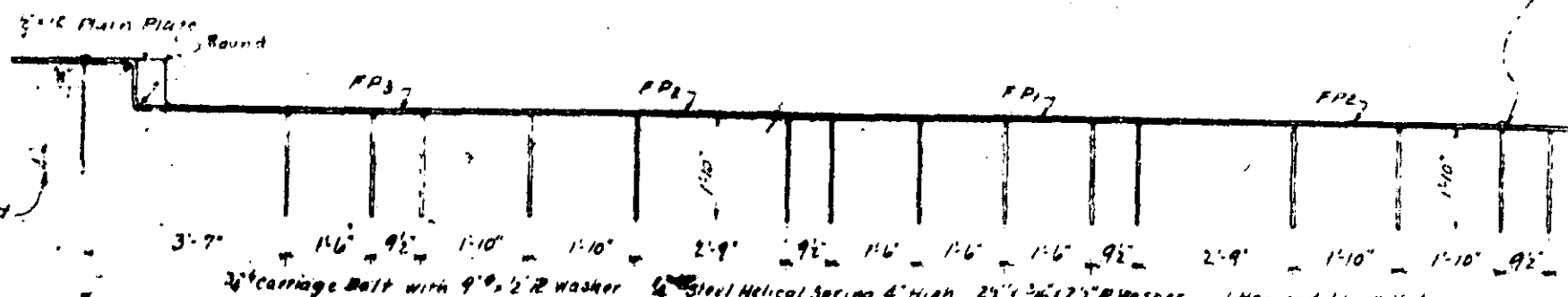


ELEVATION OF FLOOR PLATE ASSEMBLY AT PIER 4

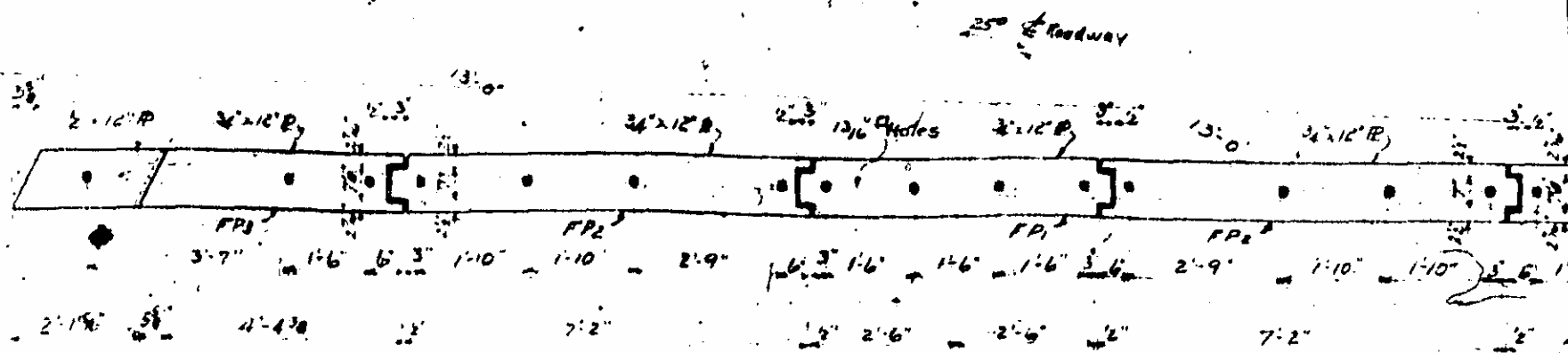


**PLAN OF FLOOR PLATE ASSEMBLY AT PIER 4
1 ASSEMBLY REQUIRED**

NOTE:
NOT



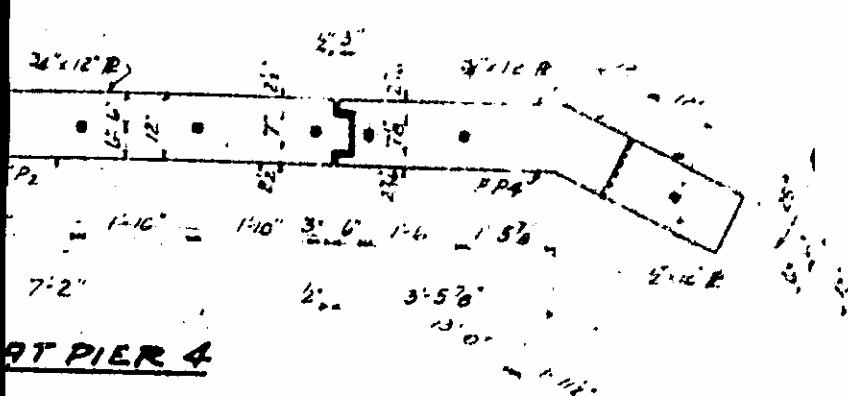
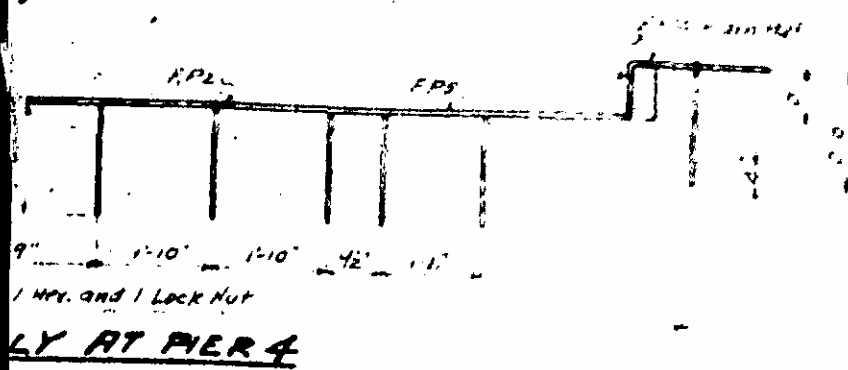
ELEVATION OF FLOOR PLATE ASSEMBLY AT END BENTS



**PLAN OF FLOOR PLATE ASSEMBLY AT END BENTS
2 ASSEMBLIES REQUIRED**

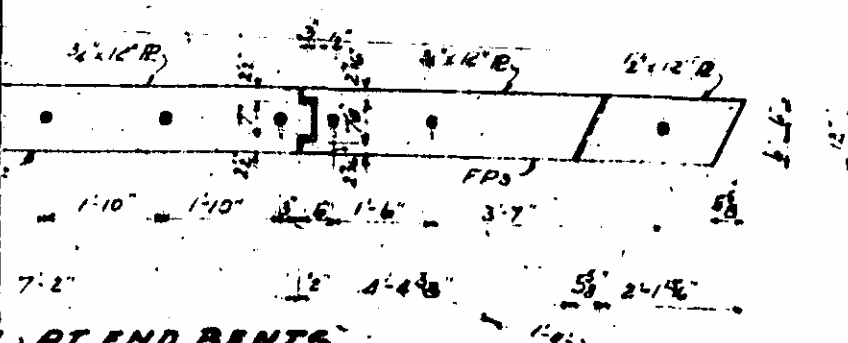
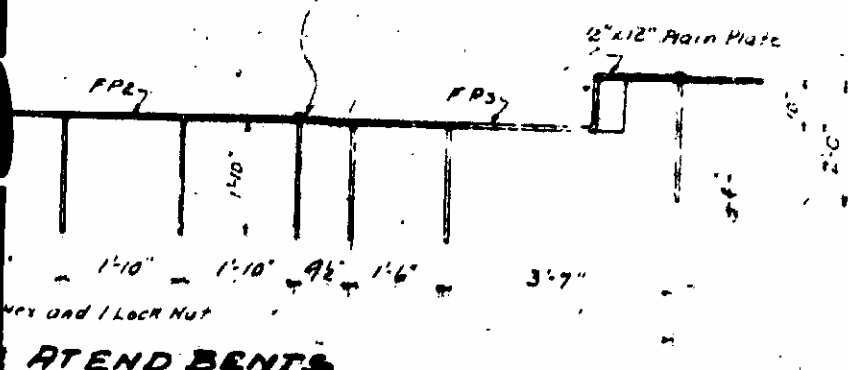
Approx. Total Weight of the entire cast of fire in place to be included class "A" concrete

SPECIAL	DATE
1384	Oct 1942
1384	Nov 1942
1384	Dec 1942

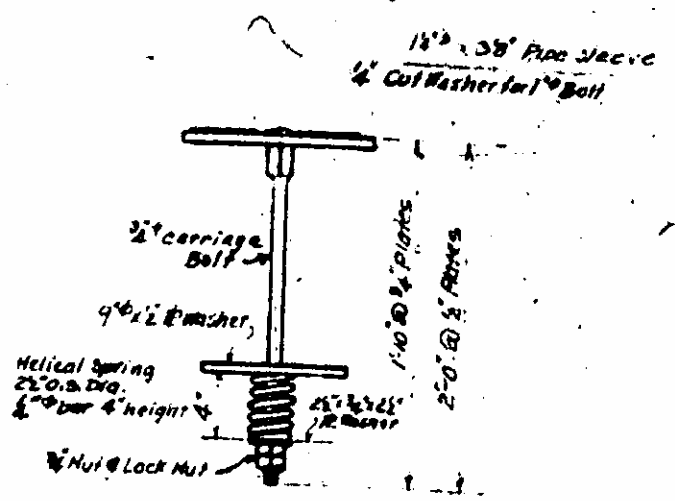


NOTE: All plates 3/4" thick to be U.S. Multigrip Floor & "A.W. Super Diamond" or an approved equivalent.

NOTE: checkered portion of Plate which would come in contact with bolt heads to be min. d.



Approx. Total Weight of Floor Plates and Bearings = 26,200 Lbs.
The entire cost of Floor Plates and Bearings complete in place to be included in the unit price bid for class "A" concrete. See specifications.



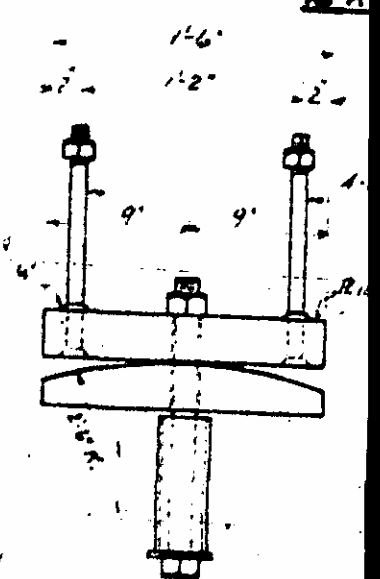
SECTION THRU ASSEMBLY

NOTE: All bolts to have Hex Heads & Nuts unless otherwise shown.
Half rounds for bearings shall be cold rolled steel, shoring or may be fabricated from castings conforming to the requirements of the Standard Specifications for steel shoring.
After the final adjustment of anchor bolts, fill 18 pipe sleeves with grout.

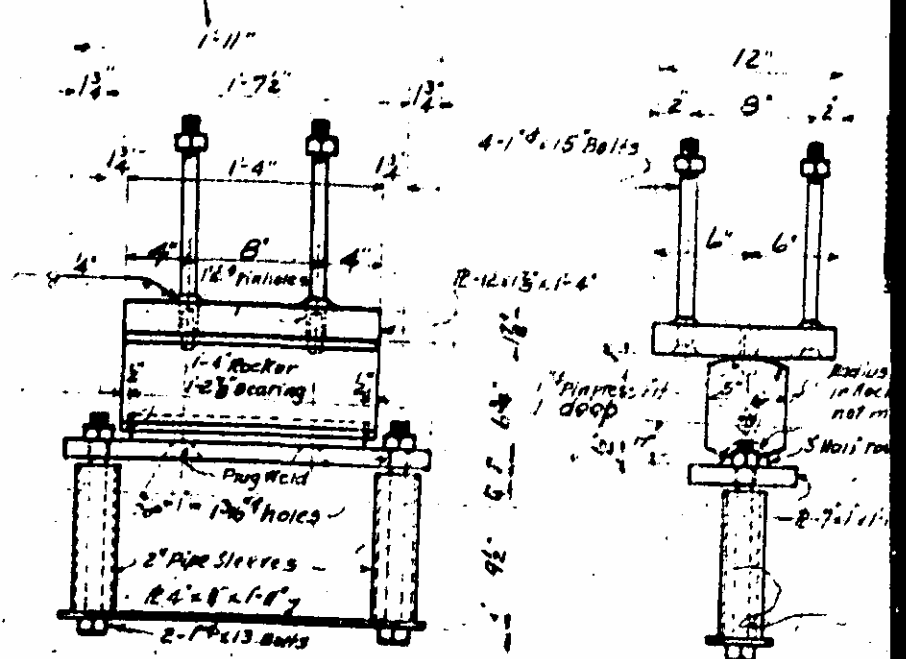
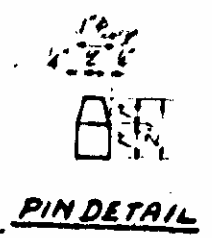
All welding shall be done in accordance with the requirement of Section 209-2, 1(b), (c) of the specifications.

For Design Data and General Note See General Drawing

DETAIL OF BEARING

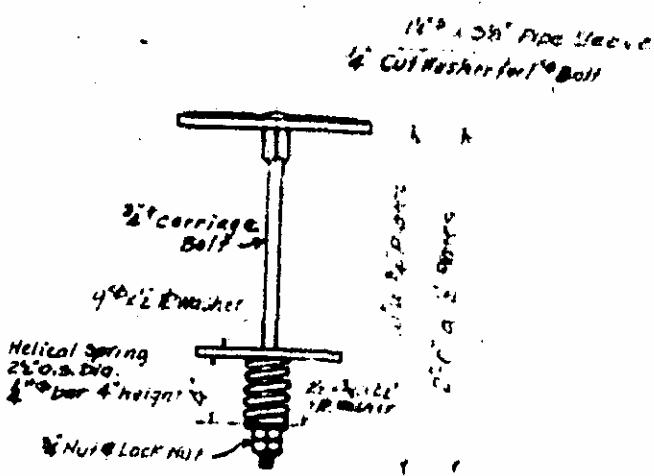


DETAIL OF BEARING

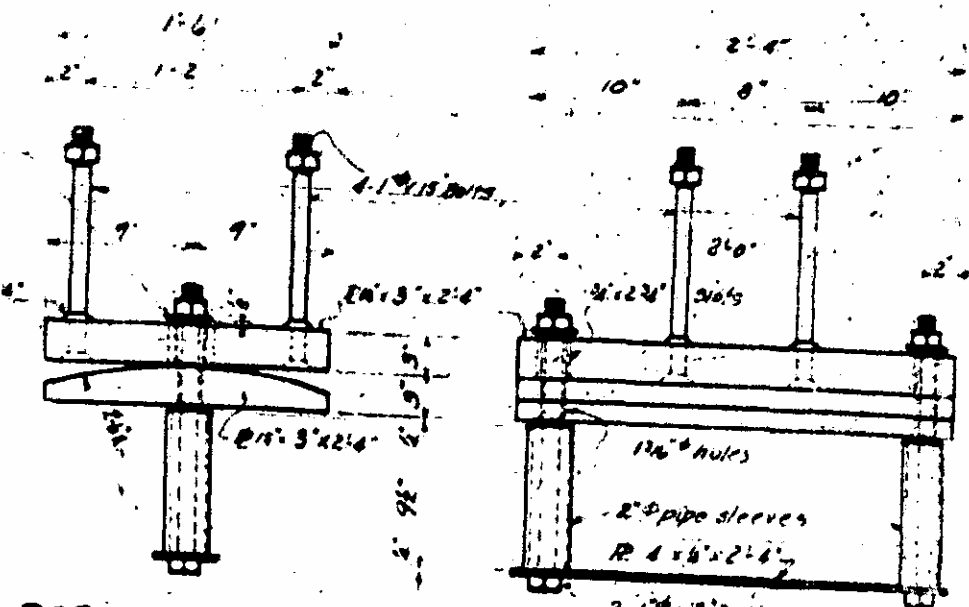


DETAIL OF BEARING AT END BENTS AND PIER 4

NO REQUIRED



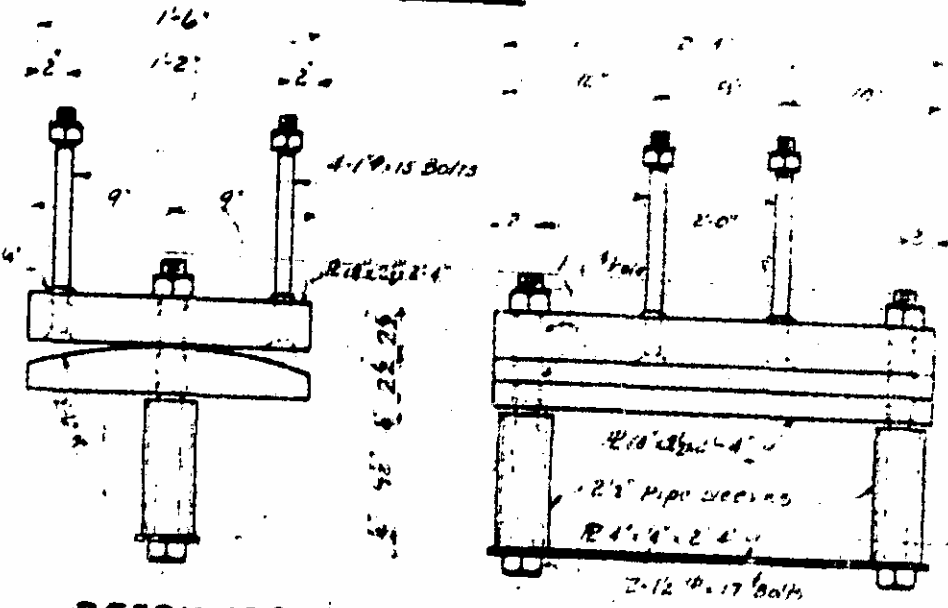
SECTION THRU ASSEMBLY



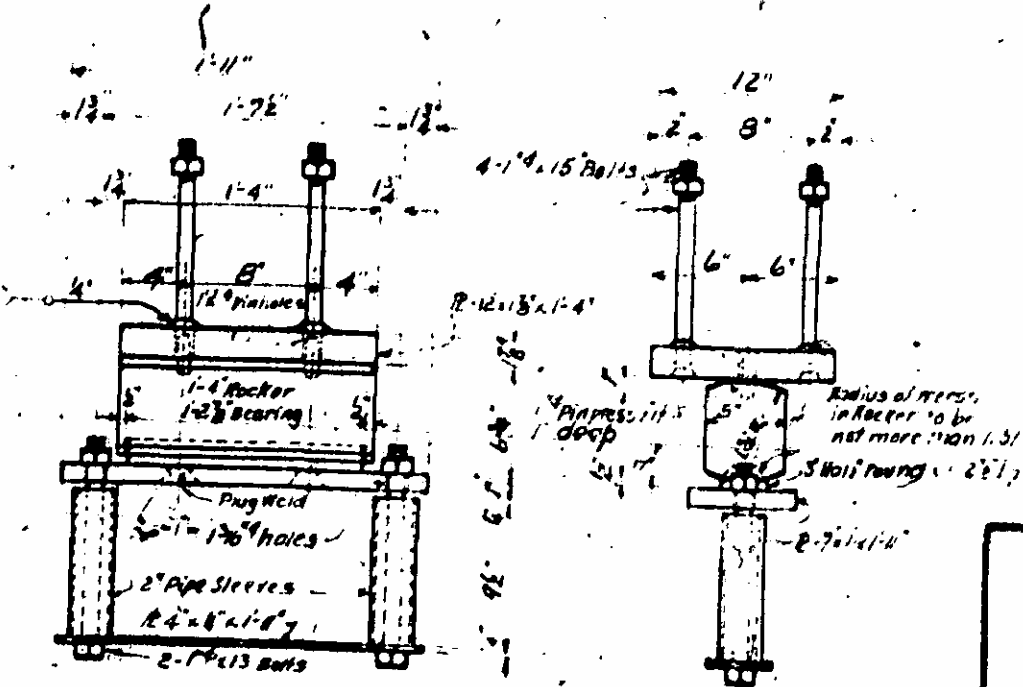
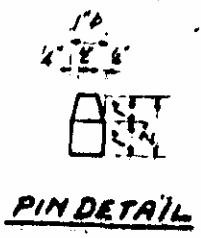
DETAIL OF BEARING AT PIERS 1-3-5 AND 7
6 REQUIRED

NOTE:
 All bolts to have Hex Heads & Nuts, unless otherwise shown.
 Half rounds for bearings shall be cold rolled steel and may be fabricated from forgings conforming to the requirements of the Standard Specifications for Steel Forgings. After the final adjustment of anchor bolts fill all pipe sleeves with grout.
 All welding shall be done in accordance with the requirement of Section 209-2, 1(b), (e) of the specifications.

For Design Data and General Note see General Drawing



DETAIL OF BEARING AT PIERS 2 AND 6
8 REQUIRED



DETAIL OF BEARING AT END BENTS AND PIER 4
16 REQUIRED

PROJECT NO. 9709
 MADISON COUNTY
 STATION 9+60

STATE OF MISSISSIPPI
 STATE HIGHWAY
 PUBLIC WORKS COMMISSION
PLATE DETAILS
 FOR
 HOT SPRINGS BRIDGE
 OVER FRENCH BRAD RIVER
 NOVEMBER 1942