

5/28/99
25-NOV-2024 10:04
Z:\Projects\Informational\Fayetteville Public Works Commission\2015017700RA Reelford Road NCDOT U-4405B\CADD\NCDOT PLANS\Utilities\Engineering\UC-Proj\U4405B\U4405B-ut-pl-uc18_psh.dgn

230
225
220
215
210
205
200
195
190
185
180


0+00 0+50 1+00 1+50 2+00 2+50 3+00 3+50 4+00 4+50 5+00 5+50 6+00 6+50 7+00 7+50 8+00 8+50 9+00 9+50 10+00 10+50 11+00 11+50 12+00 12+50 13+00 13+50 14+00

DOCUMENT NOT CONSIDERED FINAL
UNTIL ALL SIGNATURES ARE COMPLETED

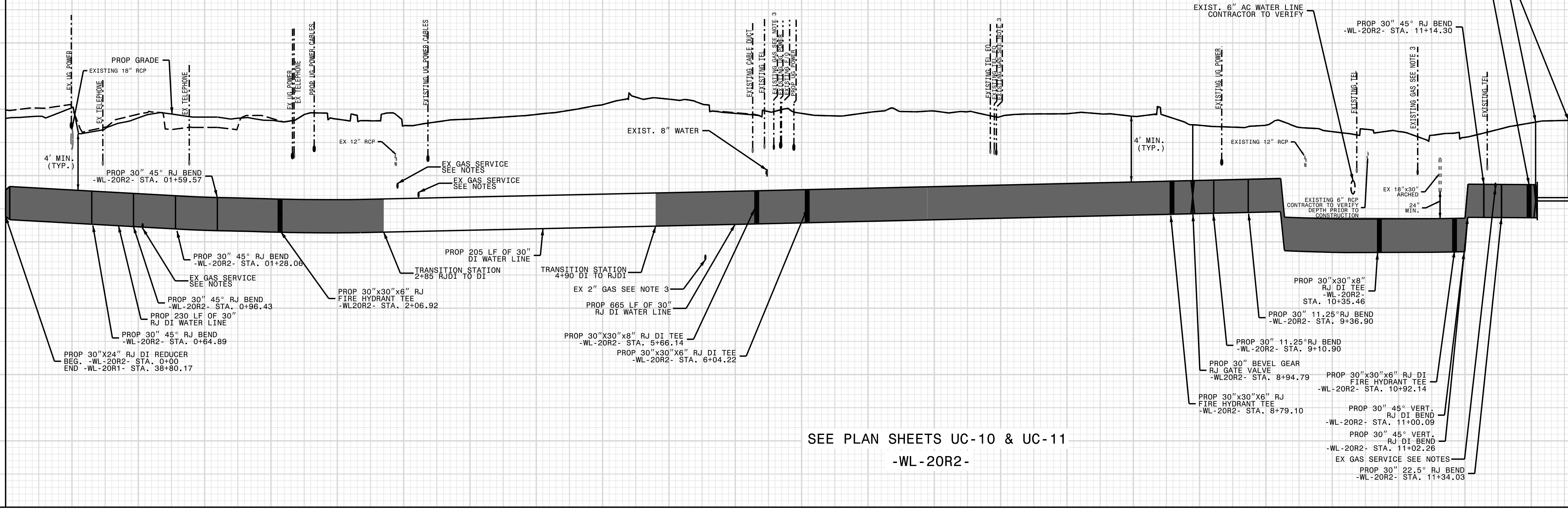
Prepared in the Office of:



AN ARDURRA COMPANY
720 CORPORATE CENTER DRIVE,
RALEIGH, NC 27607
(919)782-0495 | NCBELS #F-0374

PROJECT REFERENCE NO. U-4405B	SHEET NO. UC-18
DESIGNED BY: AAA	
DRAWN BY: DM	
CHECKED BY: RA	
APPROVED BY: BRO	
REVISED:	NORTH CAROLINA DEPARTMENT OF TRANSPORTATION
UTILITIES ENGINEERING SEC. PHONE: (919) 707-6690 FAX: (919) 250-4151	UTILITY CONSTRUCTION PLANS ONLY

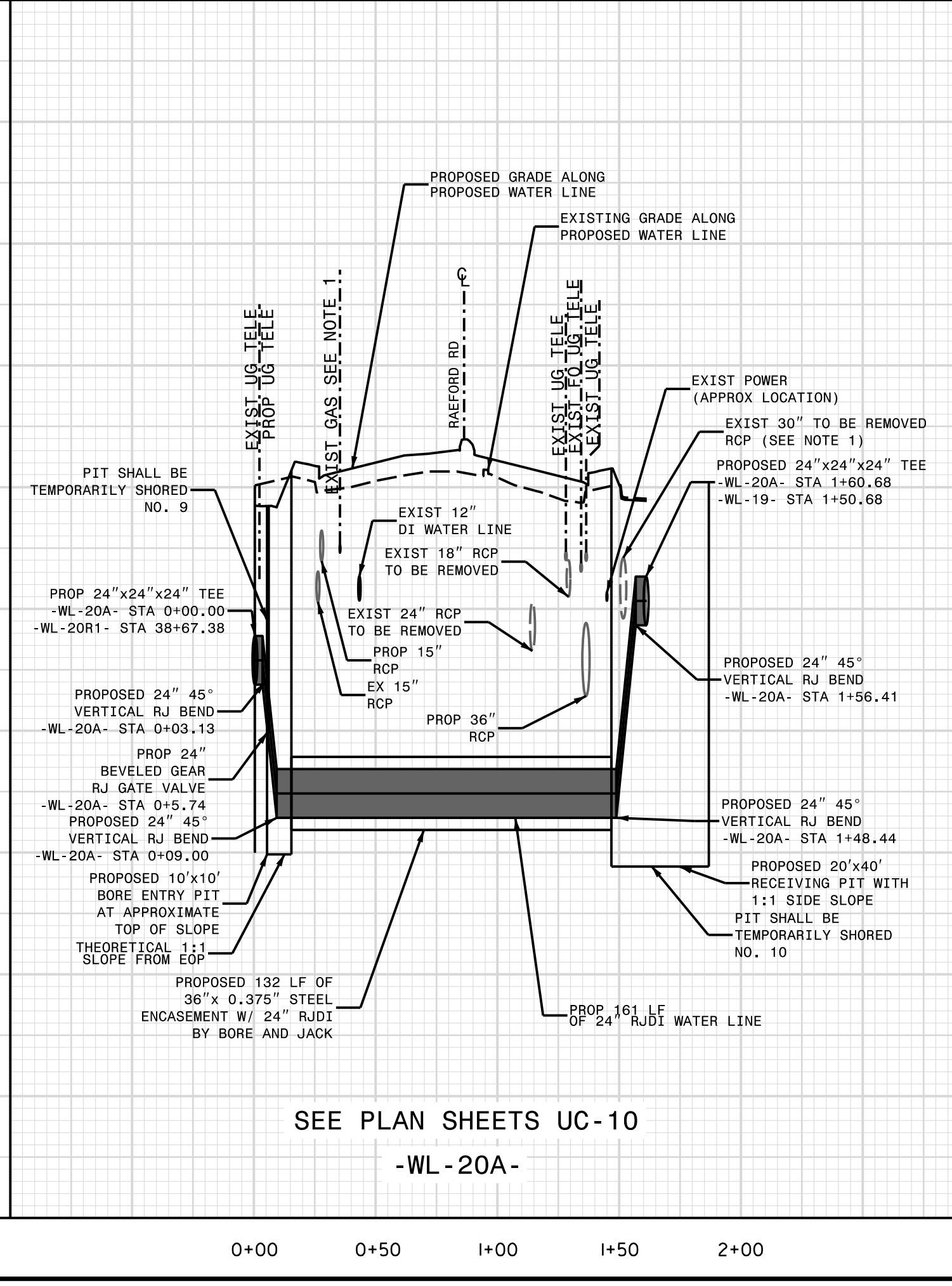
UTILITY CONSTRUCTION



SEE PLAN SHEETS UC-10 & UC-11
-WL-20R2-

225
220
215
210
205
200
195
190
185
180

0+00 0+50 1+00 1+50 2+00



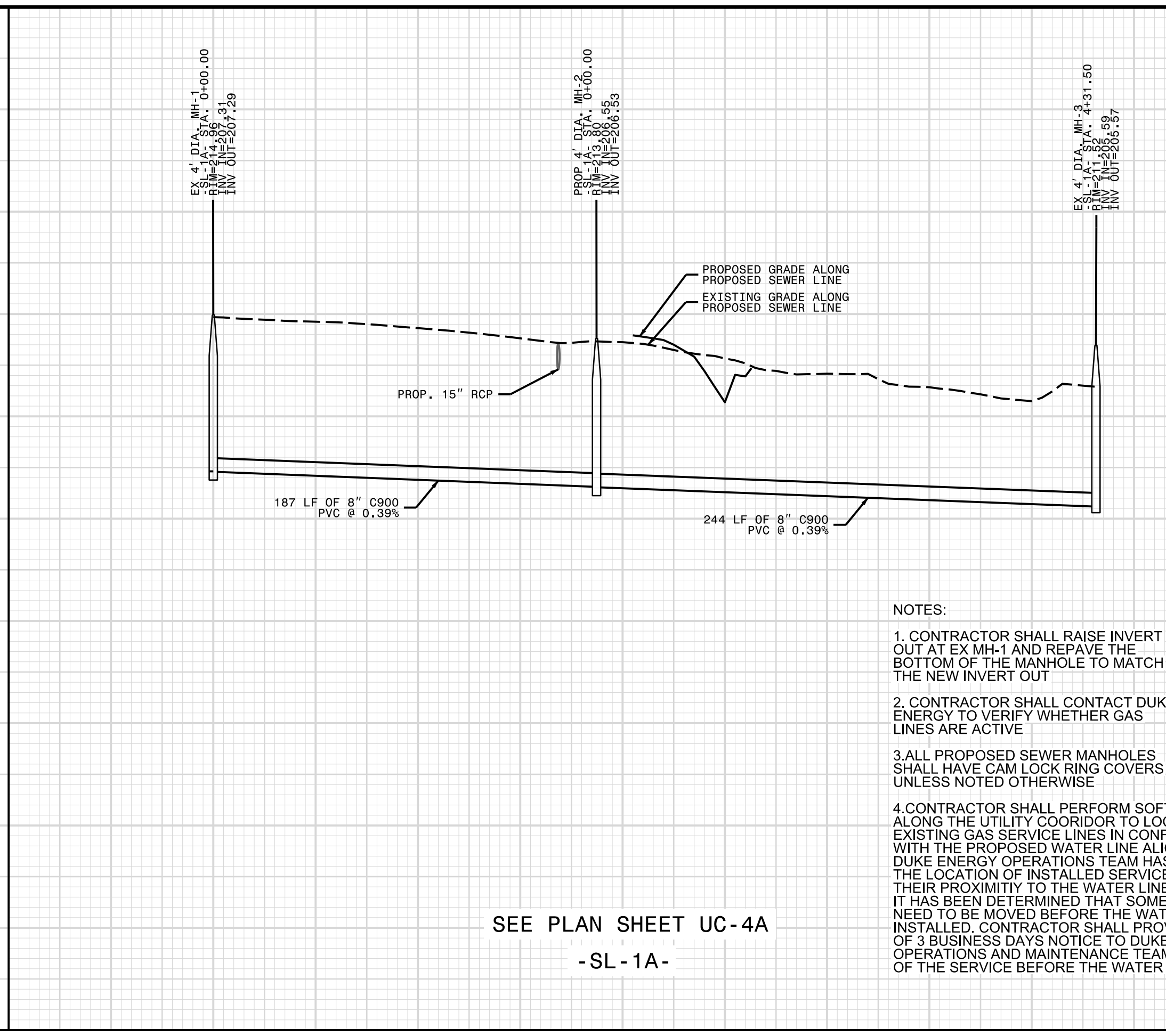
SEE PLAN SHEETS UC-10
-WL-20A-

- NOTES:
- CONTRACTOR SHALL COORDINATE WITH LAMAR TO MAINTAIN A MINIMUM DISTANCE OF 15' BETWEEN THE TRENCH AND THE BILLBOARD SUPPORT -WL-20R2 STA 0+64 THROUGH STA 1+60.
 - EXIST 30" RCP WILL CONFLICT WITH BORE PIT EXCAVATION AND OPERATIONS. CONTRACTOR SHALL COORDINATE WORK WITH PROP 30" RCP 50 EAST. 30" CAN BE REMOVED PRIOR TO BORE. OTHERWISE, CONTRACTOR SHALL BE RESPONSIBLE FOR BYPASS PUMPING STORM DRAINAGE AROUND BORE PIT. THE WORK SHALL BE SEQUENCED SO AS TO AVOID BYPASS PUMPING. IF BYPASS PUMPING OF STORMWATER IS NECESSARY IT SHALL BE INCLUDED IN THE PRICE BID FOR JACK AND BORE OPERATIONS. BYPASS PUMPING DUE TO SEQUENCING SHALL BE INCLUDED AS A PART OF THE JACK AND BORE OPERATION.
 - CONTRACTOR SHALL CONTACT DUKE ENERGY TO VERIFY WHETHER GAS LINES ARE ACTIVE
 - CONTRACTOR SHALL PERFORM SOFT DIGS ALONG THE UTILITY CORRIDOR TO LOCATED EXISTING GAS SERVICE LINES IN CONFLICT WITH THE PROPOSED WATER LINE ALIGNMENT. DUKE ENERGY OPERATIONS TEAM HAS REVIEWED THE LOCATION OF INSTALLED SERVICES AND THEIR PROXIMITY TO THE WATER LINE ALIGNMENT. IT HAS BEEN DETERMINED THAT SOME SERVICES MAY NEED TO BE MOVED BEFORE THE WATER LINE IS INSTALLED. CONTRACTOR SHALL PROVIDE A MINIMUM OF 3 BUSINESS DAYS NOTICE TO DUKE ENERGY'S OPERATIONS AND MAINTENANCE TEAM FOR RELOCATION OF THE SERVICE BEFORE THE WATER LINE IS INSTALLED.

0+00 0+50 1+00 1+50 2+00 2+50 3+00 3+50 4+00 4+50 5+00 5+50

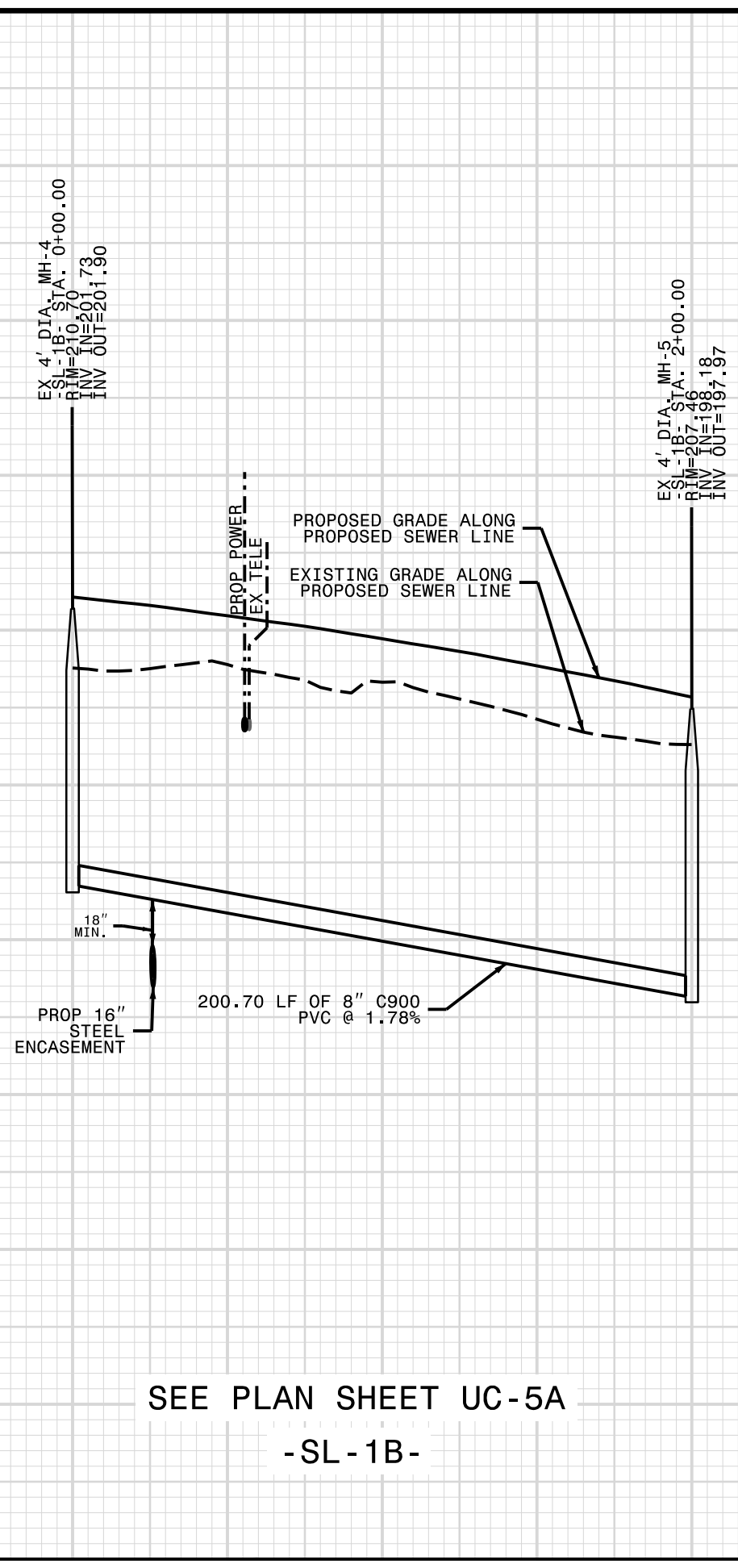
5/28/24
25-NOV-2024 10:04
Z:\Projects\25-Fayetteville Public Works Commission\2015017700RA Reeford Road NCDOT U 4405\CADD\NCDOT PLANS\Utilities\Engineering\UC\Proj\U4405B\U4405B_ut.pl.uc19_psh.dgn

230
225
220
215
210
205
200
195
190
185
180



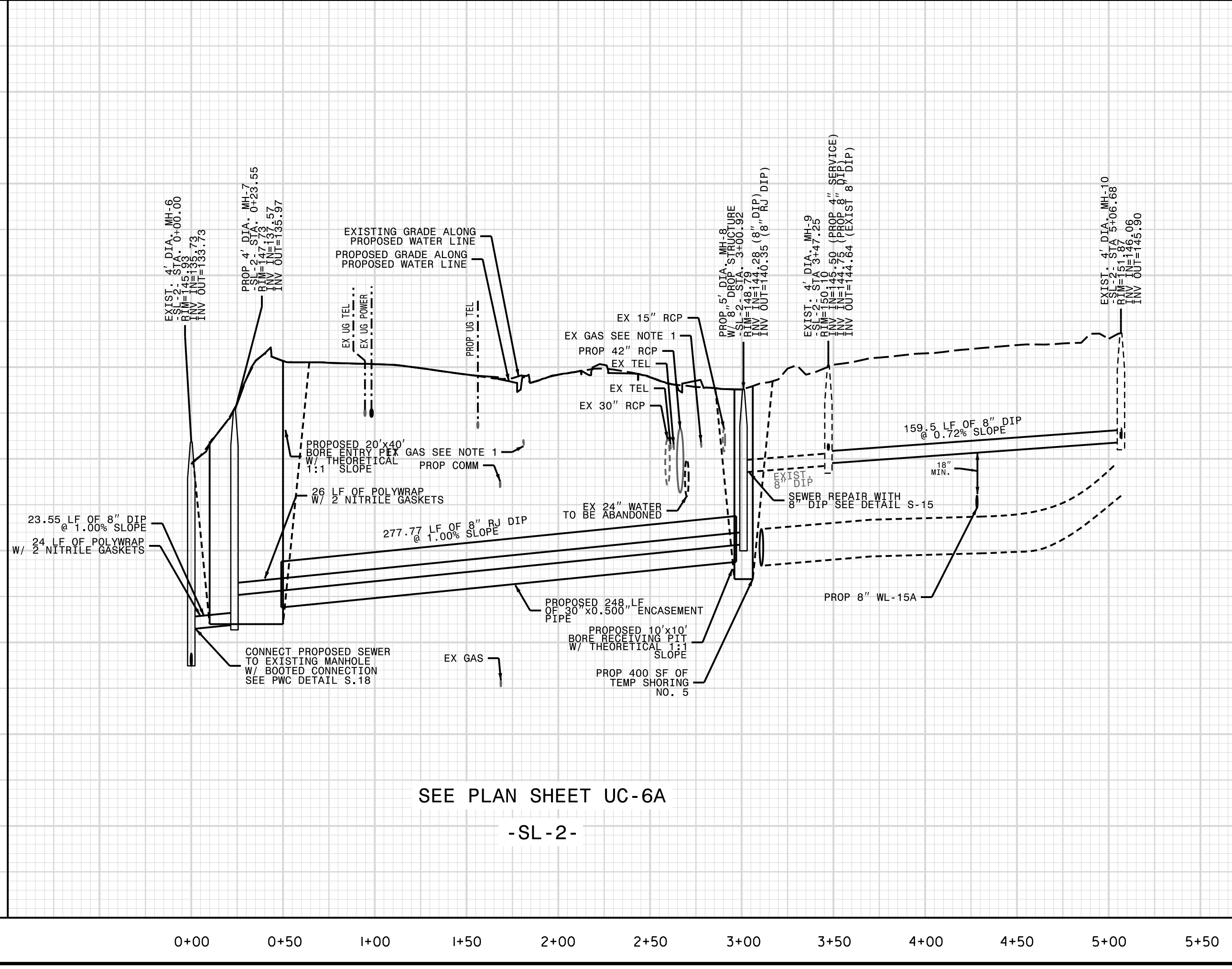
SEE PLAN SHEET UC-4A
-SL-1A-

- NOTES:
- CONTRACTOR SHALL RAISE INVERT OUT AT EX MH-1 AND REPAVE THE BOTTOM OF THE MANHOLE TO MATCH THE NEW INVERT OUT
 - CONTRACTOR SHALL CONTACT DUKE ENERGY TO VERIFY WHETHER GAS LINES ARE ACTIVE
 - ALL PROPOSED SEWER MANHOLES SHALL HAVE CAM LOCK RING COVERS UNLESS NOTED OTHERWISE
 - CONTRACTOR SHALL PERFORM SOFT DIGS ALONG THE UTILITY CORRIDOR TO LOCATED EXISTING GAS SERVICE LINES IN CONFLICT WITH THE PROPOSED WATER LINE ALIGNMENT. DUKE ENERGY OPERATIONS TEAM HAS REVIEWED THE LOCATION OF INSTALLED SERVICES AND THEIR PROXIMITY TO THE WATER LINE ALIGNMENT. IT HAS BEEN DETERMINED THAT SOME SERVICES MAY NEED TO BE MOVED BEFORE THE WATER LINE IS INSTALLED. CONTRACTOR SHALL PROVIDE A MINIMUM OF 3 BUSINESS DAYS NOTICE TO DUKE ENERGY'S OPERATIONS AND MAINTENANCE TEAM FOR RELOCATION OF THE SERVICE BEFORE THE WATER LINE IS INSTALLED.



SEE PLAN SHEET UC-5A
-SL-1B-

165
160
155
150
145
140
135
130
125
120



SEE PLAN SHEET UC-6A
-SL-2-

Prepared in the Office of:
WK DICKSON
 AN ARDURRA COMPANY
 720 CORPORATE CENTER DRIVE,
 RALEIGH, NC 27607
 (919)782-0495 | NCBELS #F-0374

DOCUMENT NOT CONSIDERED FINAL UNTIL ALL SIGNATURES ARE COMPLETED

PROJECT REFERENCE NO. U-4405B	SHEET NO. UC-19
DESIGNED BY: AAA	
DRAWN BY: DM	
CHECKED BY: RA	
APPROVED BY: BRO	
REVISED:	NORTH CAROLINA DEPARTMENT OF TRANSPORTATION UTILITIES ENGINEERING SEC. PHONE: (919)707-6690 FAX: (919)250-4151
UTILITY CONSTRUCTION PLANS ONLY	

UTILITY CONSTRUCTION

210
205
200
195
190
185
180
145
140
135
130
125
120