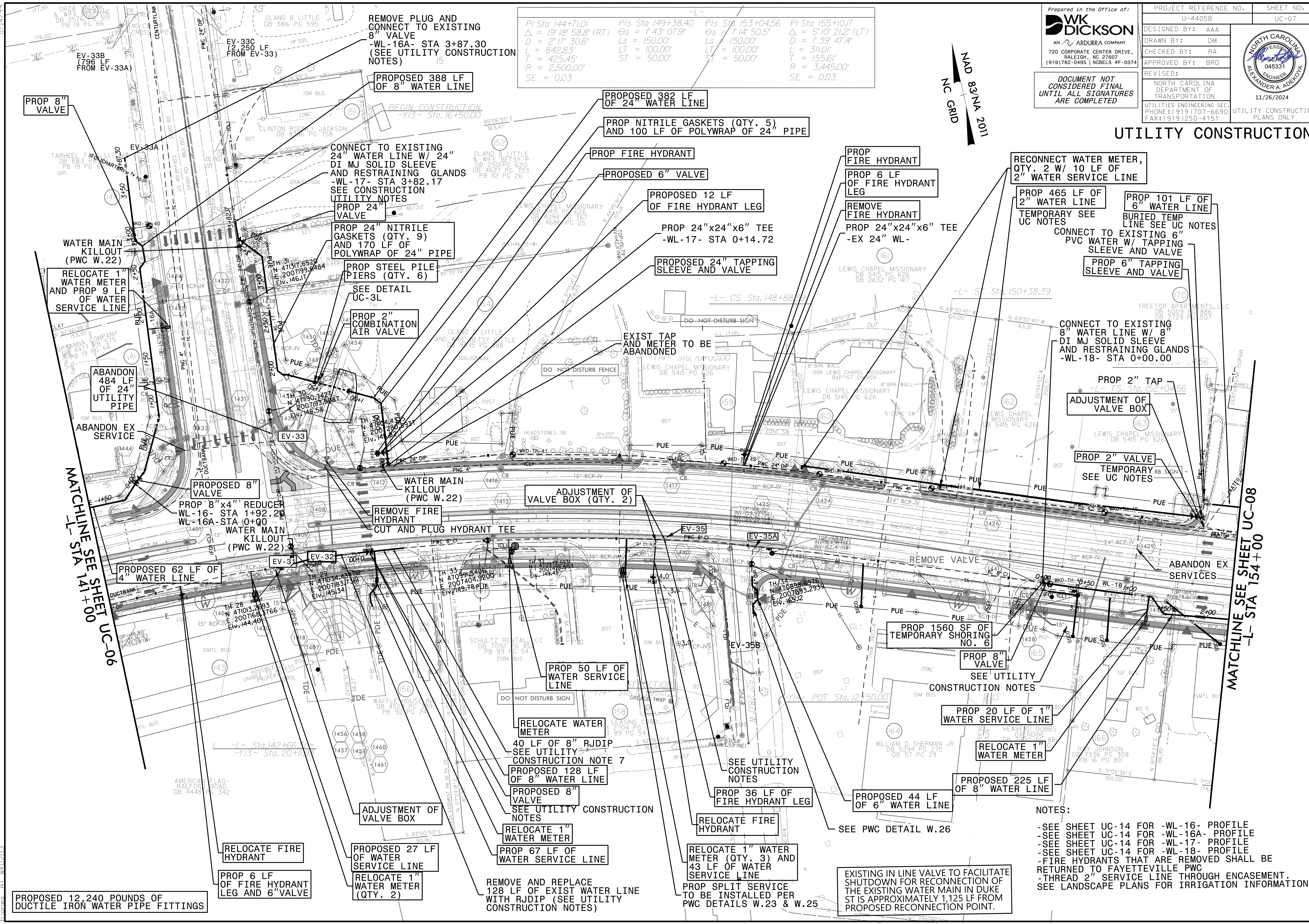


5/14/2024 10:40:25 AM
25:\Projects\Environmental\Fayetteville Public Works Commission\2015017700RA Raeford Road NCDOT U 4405\CADD\NCDOT PLANS\Utilities\Engineering\UC-Proj\U4405B\U4405B_ut_rdu14_uc07_psh.dgn
25-NOV-2024 10:40:25 AM
25:\Projects\Environmental\Fayetteville Public Works Commission\2015017700RA Raeford Road NCDOT U 4405\CADD\NCDOT PLANS\Utilities\Engineering\UC-Proj\U4405B\U4405B_ut_rdu14_uc07_psh.dgn



Pl Sta 144+71.01 Δ = 19' 18" 58.8" (RT) D = 2' 17" 30.6" L = 842.83' T = 425.45' R = 2,500.00' SE = 0.03	Pls Sta 149+38.40 Θs = 1' 43' 07.9" Ls = 150.00' LT = 100.00' ST = 50.00'	Pls Sta 153+04.56 Θs = 1' 14' 50.5" Ls = 150.00' LT = 100.00' ST = 50.00'	Pl Sta 155+10.17 Δ = 5' 10" 21.2" (LT) D = 1' 39' 47.4" L = 311.01' T = 155.61' R = 3,445.00' SE = 0.03
--	---	---	---

Prepared in the Office of:

AN ARDURRA COMPANY
720 CORPORATE CENTER DRIVE,
RALEIGH, NC 27607
(919) 782-0495 | NCBELS #F-0374

DOCUMENT NOT CONSIDERED FINAL UNTIL ALL SIGNATURES ARE COMPLETED

PROJECT REFERENCE NO.	SHEET NO.
U-4405B	UC-07

DESIGNED BY: AAA
DRAWN BY: DM
CHECKED BY: RA
APPROVED BY: BRO
REVISED:

UTILITIES ENGINEERING SEC.
PHONE: (919) 707-6690
FAX: (919) 250-4151

UTILITY CONSTRUCTION PLANS ONLY

UTILITY CONSTRUCTION

NAD 83 N.A. 2011
NC GRID

PROP 8" VALVE

RELOCATE 1" WATER METER AND PROP 9 LF OF WATER SERVICE LINE

ABANDON 484 LF OF 24" UTILITY PIPE
ABANDON EX SERVICE

PROPOSED 8" VALVE
PROP 8"x4" REDUCER WL-16- STA 1+92.29
WL-16A- STA 0+00
WATER MAIN KILLOUT (PWC W.22)

PROPOSED 62 LF OF 4" WATER LINE

RELOCATE FIRE HYDRANT
PROP 6 LF OF FIRE HYDRANT LEG AND 6" VALVE

PROPOSED 12,240 POUNDS OF DUCTILE IRON WATER PIPE FITTINGS

REMOVE PLUG AND CONNECT TO EXISTING 8" VALVE
-WL-16A- STA 3+87.30 (SEE UTILITY CONSTRUCTION NOTES)

PROPOSED 388 LF OF 8" WATER LINE

CONNECT TO EXISTING 24" WATER LINE W/ 24" DI MJ SOLID SLEEVE AND RESTRAINING GLANDS
-WL-17- STA 3+82.17
SEE CONSTRUCTION UTILITY NOTES
PROP 24" VALVE

PROP 24" NITRILE GASKETS (QTY. 9) AND 170 LF OF POLYWRAP OF 24" PIPE

PROP STEEL PILE PIERS (QTY. 6)
SEE DETAIL UC-3L

PROP 2" COMBINATION AIR VALVE

WATER MAIN KILLOUT (PWC W.22)
REMOVE FIRE HYDRANT
CUT AND PLUG HYDRANT TEE

ADJUSTMENT OF VALVE BOX (QTY. 2)

PROP 50 LF OF WATER SERVICE LINE

RELOCATE WATER METER
40 LF OF 8" RJDIP
SEE UTILITY CONSTRUCTION NOTE 7

PROPOSED 128 LF OF 8" WATER LINE

PROPOSED 8" VALVE
SEE UTILITY CONSTRUCTION NOTES

RELOCATE 1" WATER METER

PROP 67 LF OF WATER SERVICE LINE

REMOVE AND REPLACE 128 LF OF EXIST WATER LINE WITH RJDIP (SEE UTILITY CONSTRUCTION NOTES)

PROPOSED 382 LF OF 24" WATER LINE

PROP NITRILE GASKETS (QTY. 5) AND 100 LF OF POLYWRAP OF 24" PIPE

PROP FIRE HYDRANT

PROPOSED 6" VALVE

PROPOSED 12 LF OF FIRE HYDRANT LEG

PROP 24"x24"x6" TEE
-WL-17- STA 0+14.72

PROPOSED 24" TAPPING SLEEVE AND VALVE

EXIST TAP AND METER TO BE ABANDONED

EV-35
PWC 8" CI

EV-35A
PWC 8" CI

EV-35B
PWC 8" CI

PROP 36 LF OF FIRE HYDRANT LEG

RELOCATE FIRE HYDRANT

RELOCATE 1" WATER METER (QTY. 3) AND 43 LF OF WATER SERVICE LINE

PROP SPLIT SERVICE TO BE INSTALLED PER PWC DETAILS W.23 & W.25

PROP FIRE HYDRANT

PROP 6 LF OF FIRE HYDRANT LEG

REMOVE FIRE HYDRANT

PROP 24"x24"x6" TEE
-EX 24" WL-

PROP 2" TAP
ADJUSTMENT OF VALVE BOX

PROP 2" VALVE
TEMPORARY
SEE UC NOTES

PROP 1560 SF OF TEMPORARY SHORING NO. 6

PROP 8" VALVE
SEE UTILITY CONSTRUCTION NOTES

PROP 20 LF OF 1" WATER SERVICE LINE

RELOCATE 1" WATER METER

PROPOSED 225 LF OF 8" WATER LINE

PROPOSED 44 LF OF 6" WATER LINE

EXISTING IN LINE VALVE TO FACILITATE SHUTDOWN FOR RECONNECTION OF THE EXISTING WATER MAIN IN DUKE ST IS APPROXIMATELY 1,125 LF FROM PROPOSED RECONNECTION POINT.

RECONNECT WATER METER, QTY. 2 W/ 10 LF OF 2" WATER SERVICE LINE

PROP 465 LF OF 2" WATER LINE
TEMPORARY SEE UC NOTES

PROP 101 LF OF 6" WATER LINE
BURIED TEMP LINE SEE UC NOTES

CONNECT TO EXISTING 6" PVC WATER W/ TAPPING SLEEVE AND VALVE

PROP 6" TAPPING SLEEVE AND VALVE

CONNECT TO EXISTING 8" WATER LINE W/ 8" DI MJ SOLID SLEEVE AND RESTRAINING GLANDS
-WL-18- STA 0+00.00

PROP 2" TAP
ADJUSTMENT OF VALVE BOX

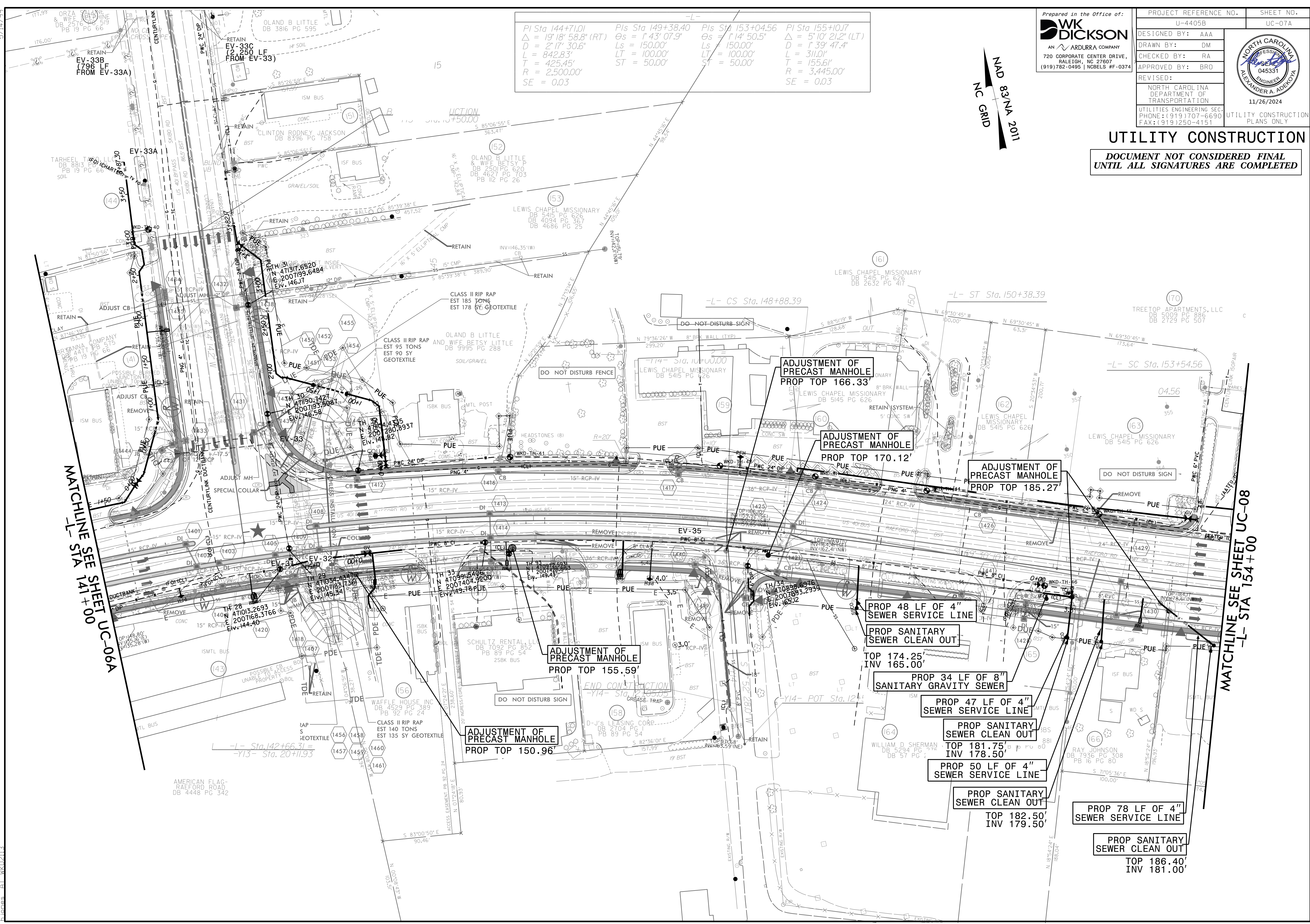
PROP 2" VALVE
TEMPORARY
SEE UC NOTES

- NOTES:
- SEE SHEET UC-14 FOR -WL-16- PROFILE
 - SEE SHEET UC-14 FOR -WL-16A- PROFILE
 - SEE SHEET UC-14 FOR -WL-17- PROFILE
 - SEE SHEET UC-14 FOR -WL-18- PROFILE
 - FIRE HYDRANTS THAT ARE REMOVED SHALL BE RETURNED TO FAYETTEVILLE PWC
 - THREAD 2" SERVICE LINE THROUGH ENCASEMENT. SEE LANDSCAPE PLANS FOR IRRIGATION INFORMATION.

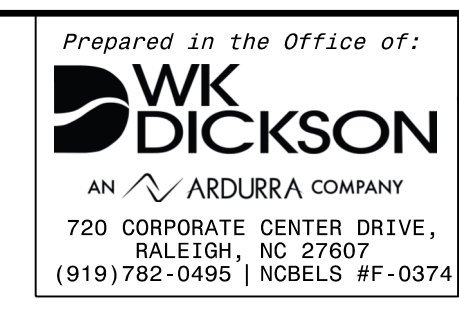
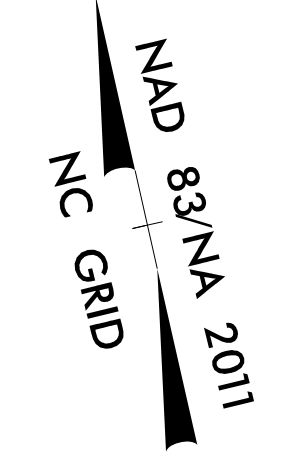
MATCHLINE SEE SHEET UC-06
-L- STA 1+00

MATCHLINE SEE SHEET UC-08
-L- STA 154+00

25-NOV-2024 10:40
C:\Projects\Environmental\Fayetteville Public Works Commission\2015017700RA Raeford Road NCDOT U 4405\CADD\NCDOT PLANS\Utilities\Engineering\UC\Proc\U4405B\U4405B_uc07A_uc07A.psh.dgn
11/26/2024



Pi Sta 144+71.01 $\Delta = 19' 18'' 58.8''$ (RT) $D = 2' 17'' 30.6''$ $L = 842.83'$ $T = 425.45'$ $R = 2,500.00'$ $SE = 0.03$	Pis Sta 149+38.40 $\Delta s = 1' 43'' 07.9''$ $Ls = 150.00'$ $LT = 100.00'$ $ST = 50.00'$	Pis Sta 153+04.56 $\Delta s = 1' 14'' 50.5''$ $Ls = 150.00'$ $LT = 100.00'$ $ST = 50.00'$	Pi Sta 155+10.17 $\Delta = 5' 10'' 21.2''$ (LT) $D = 1' 39'' 47.4''$ $L = 311.01'$ $T = 155.61'$ $R = 3,445.00'$ $SE = 0.03$
---	---	---	--



PROJECT REFERENCE NO. U-4405B	SHEET NO. UC-07A
DESIGNED BY: AAA	
DRAWN BY: DM	
CHECKED BY: RA	
APPROVED BY: BRO	
REVISED:	11/26/2024
UTILITIES ENGINEERING SEC. PHONE: (919) 707-6690 FAX: (919) 250-4151	UTILITY CONSTRUCTION PLANS ONLY

UTILITY CONSTRUCTION
DOCUMENT NOT CONSIDERED FINAL
UNTIL ALL SIGNATURES ARE COMPLETED


MATCHLINE SEE SHEET UC-06A
 -L- STA 141+00

MATCHLINE SEE SHEET UC-08
 -L- STA 154+00

AMERICAN FLAG-
 RAEFORD ROAD
 DB 4448 PG 342

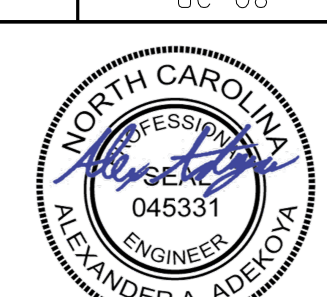
5/14/2024 10:40 AM
25-NOV-2024 10:40 AM
C:\Projects\Environmental\Fayetteville Public Works Commission\2015017700RA Reeford Road NCDOT U 4405\CA00V\NCDOT PLANS\Utilities\Engineering\UC-Proj\U4405B\U4405B_ut_r.dwg
U:\Projects\Environmental\Fayetteville Public Works Commission\2015017700RA Reeford Road NCDOT U 4405\CA00V\NCDOT PLANS\Utilities\Engineering\UC-Proj\U4405B\U4405B_ut_r.dwg
U:\Projects\Environmental\Fayetteville Public Works Commission\2015017700RA Reeford Road NCDOT U 4405\CA00V\NCDOT PLANS\Utilities\Engineering\UC-Proj\U4405B\U4405B_ut_r.dwg

Prepared in the Office of:



AN ARDURRA COMPANY
720 CORPORATE CENTER DRIVE,
RALEIGH, NC 27607
(919) 782-0495 | NCBELS #F-0374

PROJECT REFERENCE NO.	U-4405B
SHEET NO.	UC-08
DESIGNED BY:	AAA
DRAWN BY:	DM
CHECKED BY:	RA
APPROVED BY:	BRO
REVISED:	



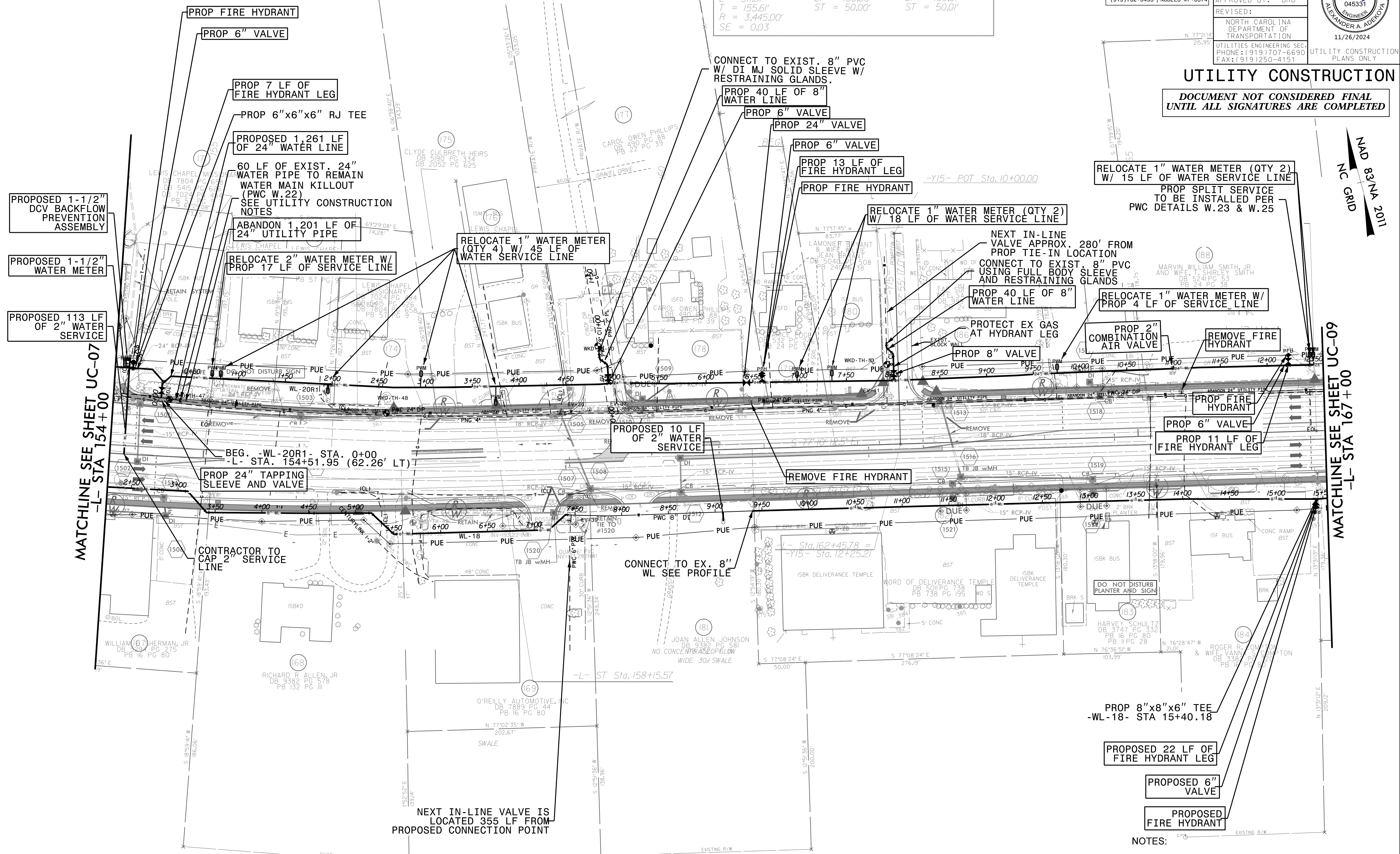
NORTH CAROLINA
DEPARTMENT OF
TRANSPORTATION
11/26/2024
UTILITIES ENGINEERING SEC.
PHONE: (919) 707-6690
FAX: (919) 250-4151
UTILITY CONSTRUCTION
PLANS ONLY

UTILITY CONSTRUCTION

**DOCUMENT NOT CONSIDERED FINAL
UNTIL ALL SIGNATURES ARE COMPLETED**

-L-

PI Sta 155+10.17	PIs Sta 157+15.57	PIs Sta 167+90.68
$\Delta = 5' 10" 21.2" (LT)$	$\Theta_s = 1' 14" 50.5"$	$\Theta_s = 2' 14" 59.4"$
$D = 1' 39" 47.4"$	$L_s = 150.00'$	$L_s = 150.00'$
$L = 311.0'$	$LT = 100.00'$	$LT = 100.0'$
$T = 155.61'$	$ST = 50.00'$	$ST = 50.0'$
$R = 3,445.00'$		
$SE = 0.03$		



MATCHLINE SEE SHEET UC-07
-L- STA 154+00

MATCHLINE SEE SHEET UC-09
-L- STA 167+00

NOTES:

- SEE SHEET UC-14 & UC-15 FOR -WL-18- PROFILE
- SEE SHEET UC-16 & UC-17 FOR -WL-20R1- PROFILE
- FIRE HYDRANTS THAT ARE REMOVED SHALL BE RETURNED TO FAYETTEVILLE PWC
- THREAD 2" SERVICE LINE THROUGH ENCASUREMENT.
- SEE LANDSCAPE PLANS FOR IRRIGATION INFORMATION.

PROPOSED 12,135 POUNDS OF
DUCTILE IRON WATER PIPE FITTINGS

NEXT IN-LINE VALVE IS
LOCATED 355 LF FROM
PROPOSED CONNECTION POINT

PROP 8"x8"x6" TEE
-WL-18- STA 15+40.18

PROPOSED 22 LF OF
FIRE HYDRANT LEG

PROPOSED 6"
VALVE

PROPOSED
FIRE HYDRANT

NAD 83/NA 2011
NC GRID

25-NOV-2024 10:40
C:\Projects\Environmental\Fayetteville Public Works Commission\2015017700RA Reeford Road NCDOT U 44055\CADD\NCDOT PLANS\Utilities\Engineering\UC\Proc\U44055\U44055\U44055.ut...rdj16_uc09_psh.dgn
5/14/2024

-L-		
Pls Sta 167+90.68	PI Sta 170+65.98	Pls Sta 173+39.22
$\Delta s = 2' 14" 59.4"$	$\Delta = 13' 27" 18.9" (LT)$	$\Delta s = 2' 14" 59.4"$
$Ls = 150.00'$	$D = 2' 59" 59.2"$	$Ls = 150.00'$
$LT = 100.01'$	$L = 448.54'$	$LT = 100.01'$
$ST = 50.01'$	$T = 225.31'$	$ST = 50.01'$
	$R = 1,910.00'$	
	$SE = 0.03$	

- NOTES
- EXISTING ABANDONED CONCRETE FOUNDATION LOCATED ON LAFAYETTE FORD PROPERTY (PARCEL 193) COULD POSE AS AN UNFORSEEN CONDITION FOR INSTALL OF WATERLINE. NO SEPARATE PAYMENT OF CUTTING AND REMOVAL OF OLD CONCRETE SIGN FOUNDATION WILL BE MADE.
 - PROPOSED POWER POLE LOCATED ON PARCEL 193 WILL NEED TO BE SUPPORTED DURING INSTALLATION OF WATERLINE DUE TO PROPOSED GUY WIRE
 - SEE SHEET UC-15 FOR -WL-18- PROFILE
 - SEE SHEET UC-16 & UC-17 FOR -WL-20R1- PROFILE
 - THREAD 2" SERVICE LINE THROUGH 4" ENCASUREMENT. SEE LANDSCAPE PLANS FOR IRRIGATION INFORMATION
 - FIRE HYDRANTS THAT ARE REMOVED SHALL BE RETURNED TO FAYETTEVILLE PWC

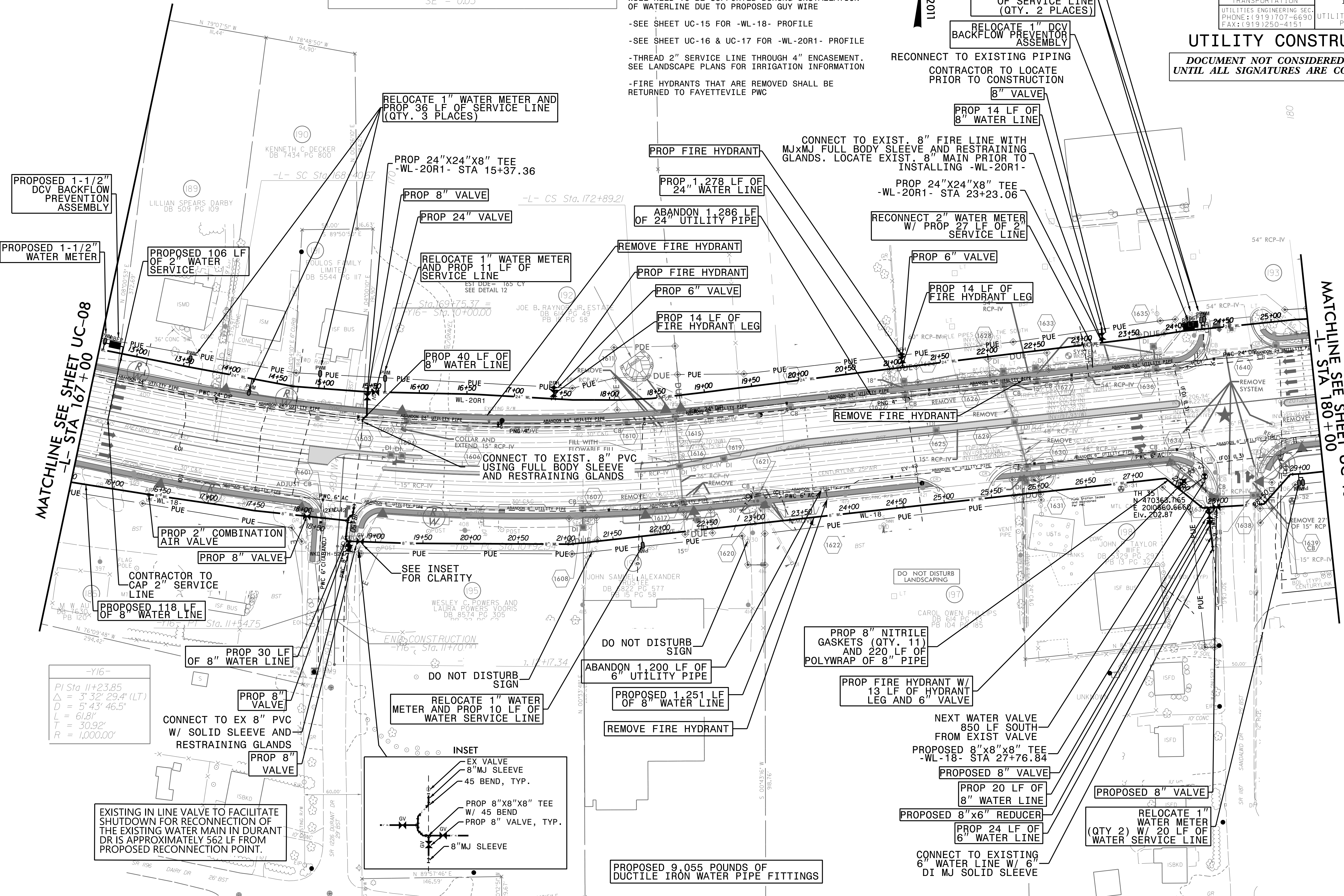
NAD 83/NA 2011
NC GRID



PROJECT REFERENCE NO.	U-4405B
SHEET NO.	UC-09
DESIGNED BY:	AAA
DRAWN BY:	DM
CHECKED BY:	RA
APPROVED BY:	BRO
REVISED:	
NORTH CAROLINA DEPARTMENT OF TRANSPORTATION	
UTILITIES ENGINEERING SEC. PHONE: (919) 707-6690 FAX: (919) 250-4151	
UTILITY CONSTRUCTION PLANS ONLY	



UTILITY CONSTRUCTION
DOCUMENT NOT CONSIDERED FINAL
UNTIL ALL SIGNATURES ARE COMPLETED



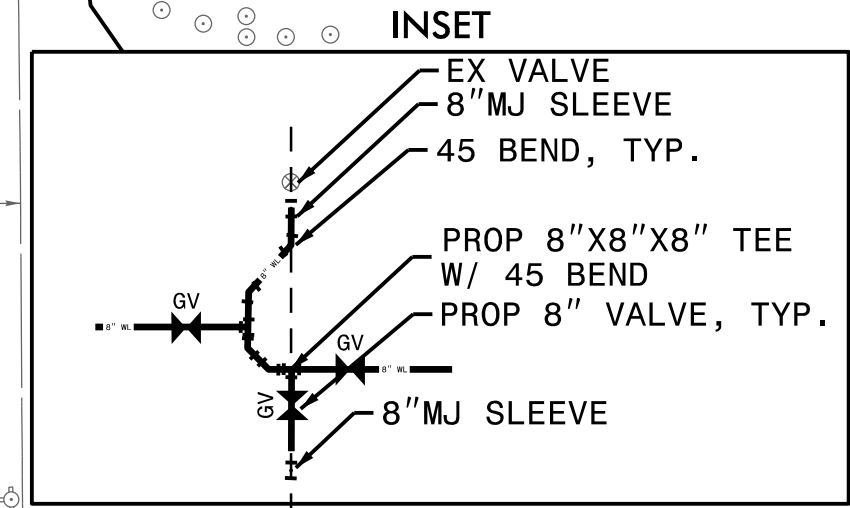
PROPOSED 1-1/2" DCV BACKFLOW PREVENTION ASSEMBLY

PROPOSED 1-1/2" WATER METER

MATCHLINE SEE SHEET UC-08
-L- STA 167+00

-Y16-	
PI Sta 11+23.85	$\Delta = 3' 32" 29.4" (LT)$
$D = 5' 43" 46.5"$	$L = 61.81'$
$T = 30.92'$	$R = 1,000.00'$

EXISTING IN LINE VALVE TO FACILITATE SHUTDOWN FOR RECONNECTION OF THE EXISTING WATER MAIN IN DURANT DR IS APPROXIMATELY 562 LF FROM PROPOSED RECONNECTION POINT.



PROPOSED 9,055 POUNDS OF DUCTILE IRON WATER PIPE FITTINGS

MATCHLINE SEE SHEET UC-10
-L- STA 180+00

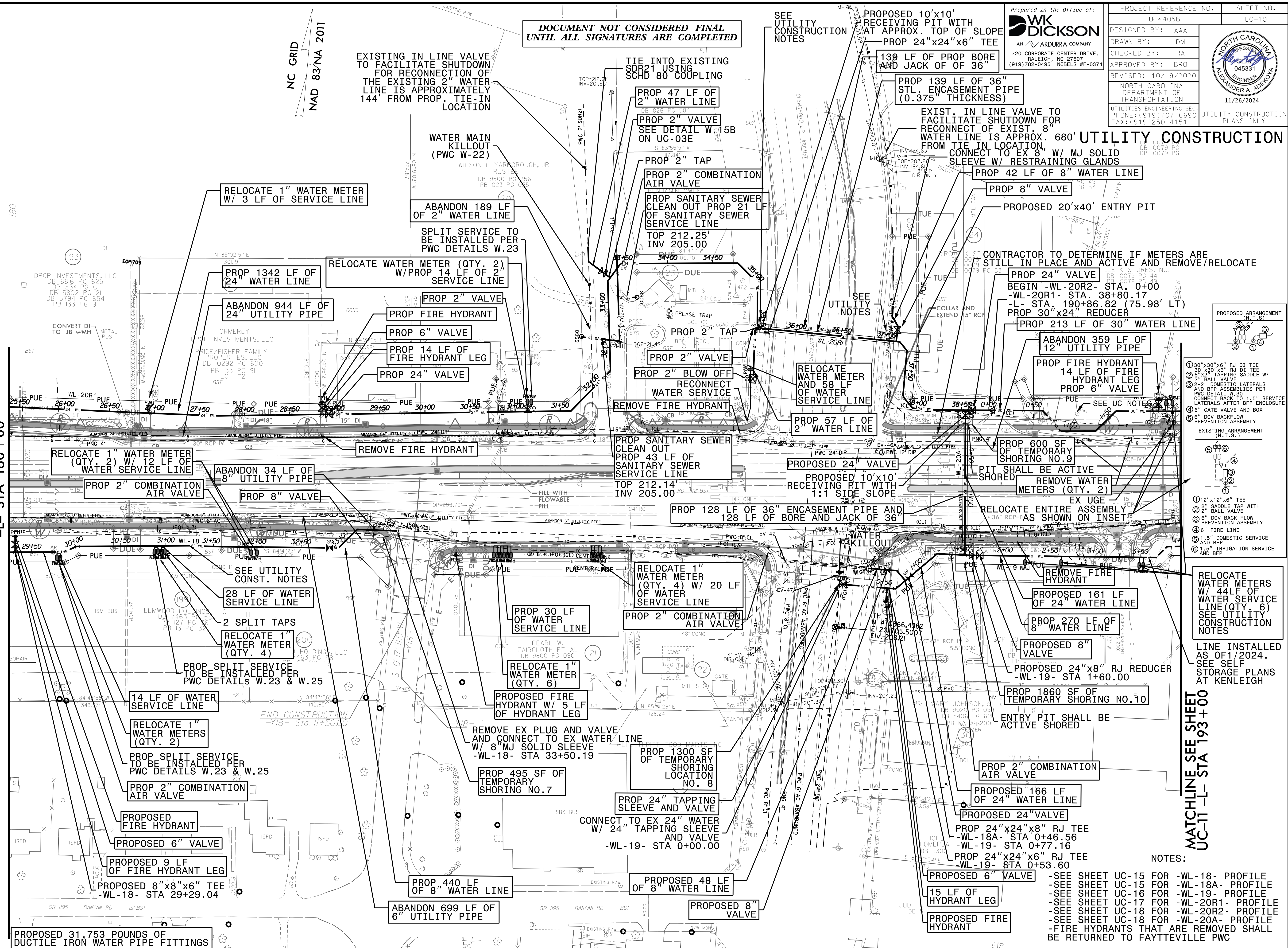
MATCHLINE SEE SHEET UC-09
-L- STA 180+00

MATCHLINE SEE SHEET
UC-11 -L- STA 193+00

DOCUMENT NOT CONSIDERED FINAL
UNTIL ALL SIGNATURES ARE COMPLETED



PROJECT REFERENCE NO.	U-4405B	SHEET NO.	UC-10
DESIGNED BY:	AAA		
DRAWN BY:	DM		
CHECKED BY:	RA		
APPROVED BY:	BRO		
REVISED:	10/19/2020		
NORTH CAROLINA DEPARTMENT OF TRANSPORTATION		11/26/2024	
UTILITIES ENGINEERING SEC. PHONE: (919) 707-6690 FAX: (919) 250-4151		UTILITY CONSTRUCTION PLANS ONLY	



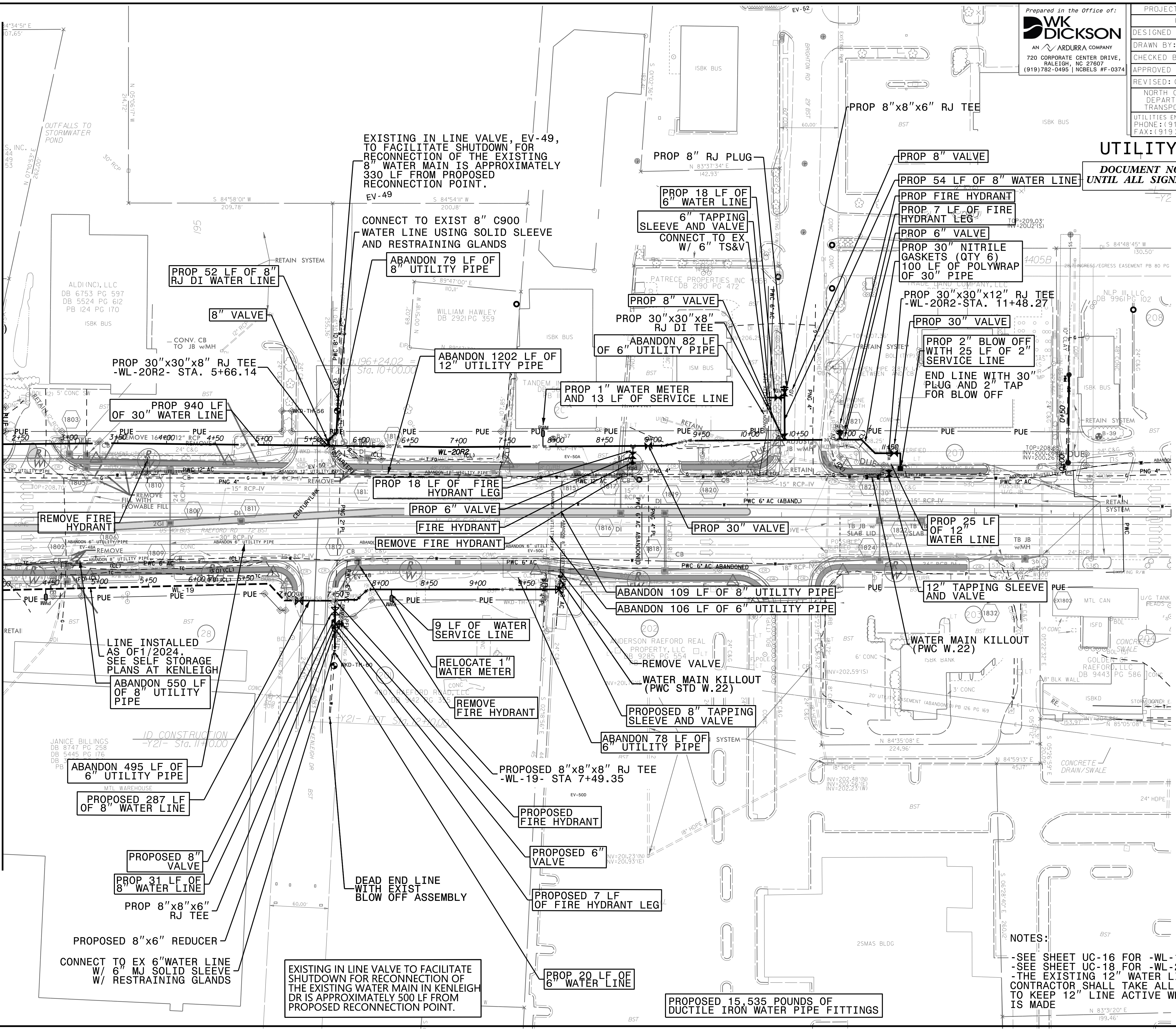
- NOTES:
- SEE SHEET UC-15 FOR -WL-18- PROFILE
 - SEE SHEET UC-15 FOR -WL-18A- PROFILE
 - SEE SHEET UC-16 FOR -WL-19- PROFILE
 - SEE SHEET UC-17 FOR -WL-20R1- PROFILE
 - SEE SHEET UC-18 FOR -WL-20R2- PROFILE
 - SEE SHEET UC-18 FOR -WL-20A- PROFILE
 - FIRE HYDRANTS THAT ARE REMOVED SHALL BE RETURNED TO FAYETTEVILLE PWC

- PROPOSED ARRANGEMENT (N.T.S.)
- 30"x30"x6" RJ DI TEE
 - 30"x30"x6" RJ DI TEE
 - 2" BALL VALVE
 - 2" DOMESTIC SERVICE AND BFP ASSEMBLY PER PWC DETAIL W.30
 - CONNECT BACK TO 1.5" SERVICE LATERALS AFTER BFP ENCLOSURE
 - 6" GATE VALVE AND BOX
 - 6" DCV BACKFLOW PREVENTION ASSEMBLY
- EXISTING ARRANGEMENT (N.T.S.)
- 12"x12"x6" TEE
 - 2" SADDLE TAP WITH 2" BALL VALVE
 - 6" DCV BACKFLOW PREVENTION ASSEMBLY
 - 6" FIRE LINE
 - 1.5" DOMESTIC SERVICE AND BFP
 - 1.5" IRRIGATION SERVICE

PROPOSED 31,753 POUNDS OF DUCTILE IRON WATER PIPE FITTINGS

5/14/2024 10:03
2:\Projects\Environmental\Fayetteville Public Works Commission\2015017700RA Raeford Road NCDOT U 44055\CADD\NCDOT PLANS\Utilities\Engineering\UC\Pro\U4405B\U4405B_ut_r.dwg uc11_psh.dgn
25-NOV-2024 10:03
2:\Projects\Environmental\Fayetteville Public Works Commission\2015017700RA Raeford Road NCDOT U 44055\CADD\NCDOT PLANS\Utilities\Engineering\UC\Pro\U4405B\U4405B_ut_r.dwg uc11_psh.dgn

MATCHLINE SEE SHEET UC-10
-L- STA 193+00



PROJECT REFERENCE NO.	U-4405B	SHEET NO.	UC-11
DESIGNED BY:	AAA		
DRAWN BY:	DM		
CHECKED BY:	RA		
APPROVED BY:	BRO		
REVISED:	06/27/2022		
UTILITIES ENGINEERING SEC.	PHONE: (919) 707-6690	UTILITY CONSTRUCTION PLANS ONLY	
FAX:	(919) 250-4151		

UTILITY CONSTRUCTION
 DOCUMENT NOT CONSIDERED FINAL
 UNTIL ALL SIGNATURES ARE COMPLETED

NC GRID
 NAD 83/NA 2011

NOTES:
 -SEE SHEET UC-16 FOR -WL-19- PROFILE
 -SEE SHEET UC-18 FOR -WL-20R2- PROFILE
 -THE EXISTING 12" WATER LINE IS UNRESTRAINED.
 CONTRACTOR SHALL TAKE ALL PRECAUTIONS NECESSARY TO KEEP 12" LINE ACTIVE WHEN THE TAP CONNECTION IS MADE

EXISTING IN LINE VALVE TO FACILITATE SHUTDOWN FOR RECONNECTION OF THE EXISTING WATER MAIN IN KENLEIGH DR IS APPROXIMATELY 500 LF FROM PROPOSED RECONNECTION POINT.

EXISTING IN LINE VALVE, EV-49, TO FACILITATE SHUTDOWN FOR RECONNECTION OF THE EXISTING 8" WATER MAIN IS APPROXIMATELY 330 LF FROM PROPOSED RECONNECTION POINT.
 EV-49

CONNECT TO EXIST 8" C900 WATER LINE USING SOLID SLEEVE AND RESTRAINING GLANDS

PROPOSED 15,535 POUNDS OF DUCTILE IRON WATER PIPE FITTINGS

CONNECT TO EX 6" WATER LINE W/ 6" MJ SOLID SLEEVE W/ RESTRAINING GLANDS

PROPOSED 8" VALVE
 PROP 31 LF OF 8" WATER LINE
 PROP 8"x8"x6" RJ TEE

PROPOSED 287 LF OF 8" WATER LINE
 ABANDON 495 LF OF 6" UTILITY PIPE

ABANDON 550 LF OF 8" UTILITY PIPE
 LINE INSTALLED AS OF 1/2024. SEE SELF STORAGE PLANS AT KENLEIGH

REMOVE FIRE HYDRANT

RELOCATE 1" WATER METER

9 LF OF WATER SERVICE LINE

REMOVE FIRE HYDRANT

FIRE HYDRANT

PROP 6" VALVE

PROP 18 LF OF FIRE HYDRANT LEG

ABANDON 78 LF OF 6" UTILITY PIPE
 PROPOSED 8"x8"x8" RJ TEE -WL-19- STA 7+49.35

PROPOSED FIRE HYDRANT

PROPOSED 6" VALVE

PROPOSED 7 LF OF FIRE HYDRANT LEG

PROP 20 LF OF 6" WATER LINE

REMOVE VALVE
 WATER MAIN KILLOUT (PWC STD W.22)

ABANDON 106 LF OF 6" UTILITY PIPE

ABANDON 109 LF OF 8" UTILITY PIPE

PROP 25 LF OF 12" WATER LINE
 12" TAPPING SLEEVE AND VALVE

PROP 2" BLOW OFF WITH 25 LF OF 2" SERVICE LINE
 END LINE WITH 30" PLUG AND 2" TAP FOR BLOW OFF

PROP 30" VALVE

PROP 30"x30"x12" RJ TEE -WL-20R2- STA. 11+48.27

PROP 30" NITRILE GASKETS (QTY 6)
 100 LF OF POLYWRAP OF 30" PIPE

PROP 6" VALVE

PROP 7 LF OF FIRE HYDRANT LEG

PROP FIRE HYDRANT

PROP 54 LF OF 8" WATER LINE

PROP 8" VALVE

PROP 8" RJ PLUG

PROP 18 LF OF 6" WATER LINE
 6" TAPPING SLEEVE AND VALVE
 CONNECT TO EX W/ 6" TS&V

PROP 8" VALVE

PROP 30"x30"x8" RJ DI TEE
 ABANDON 82 LF OF 6" UTILITY PIPE

PROP 1" WATER METER AND 13 LF OF SERVICE LINE

ABANDON 1202 LF OF 12" UTILITY PIPE

ABANDON 79 LF OF 8" UTILITY PIPE

8" VALVE

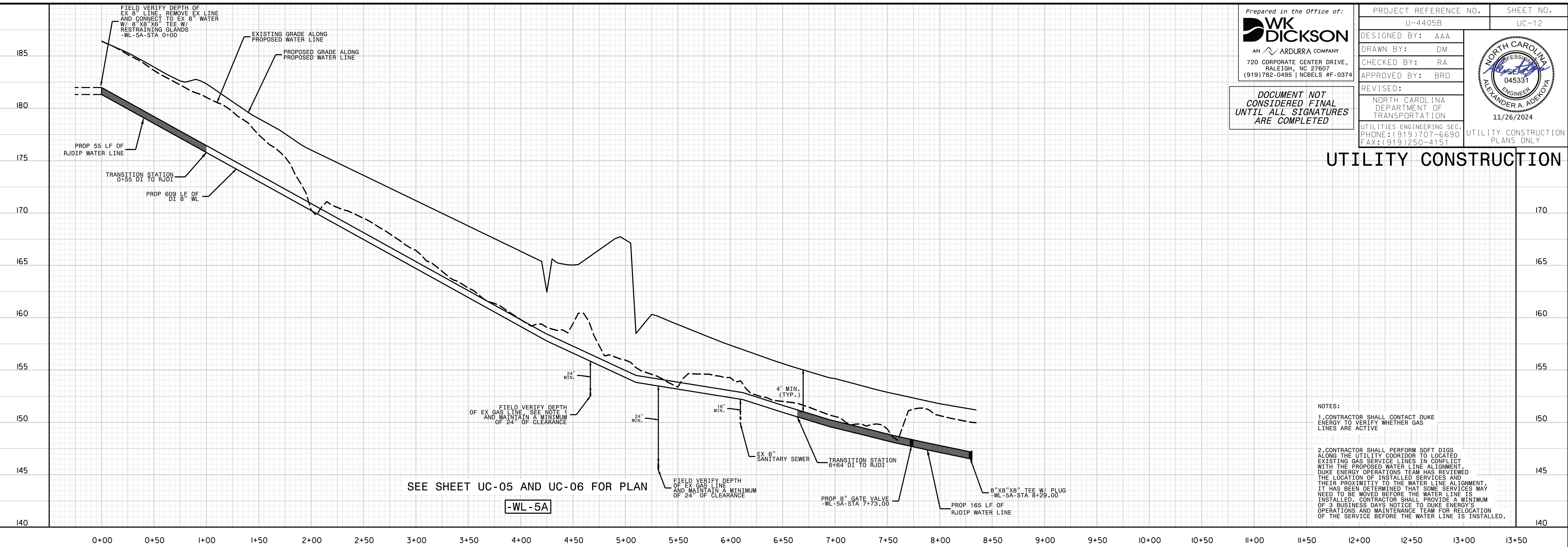
PROP 52 LF OF 8" RJ DI WATER LINE

PROP 30"x30"x8" RJ TEE -WL-20R2- STA. 5+66.14

PROP 940 LF OF 30" WATER LINE

REMOVE FIRE HYDRANT

5/28/24
25-NOV-2024 10:03
C:\Projects\2024\01\017700RA_Reeford_Road_NCDOT_U-4405\CADD\NCDOT_PLANS\Utilities\Engineer\ng\UC\Proj\U4405B\U4405B-ut-.pfl\uc12_psh.dgn



Prepared in the Office of:

WK DICKSON
AN ARDURRA COMPANY
720 CORPORATE CENTER DRIVE, RALEIGH, NC 27607
(919)782-0495 | NCBELS #F-0374

PROJECT REFERENCE NO. U-4405B
SHEET NO. UC-12

DESIGNED BY: AAA
DRAWN BY: DM
CHECKED BY: RA
APPROVED BY: BRD

REVISED:

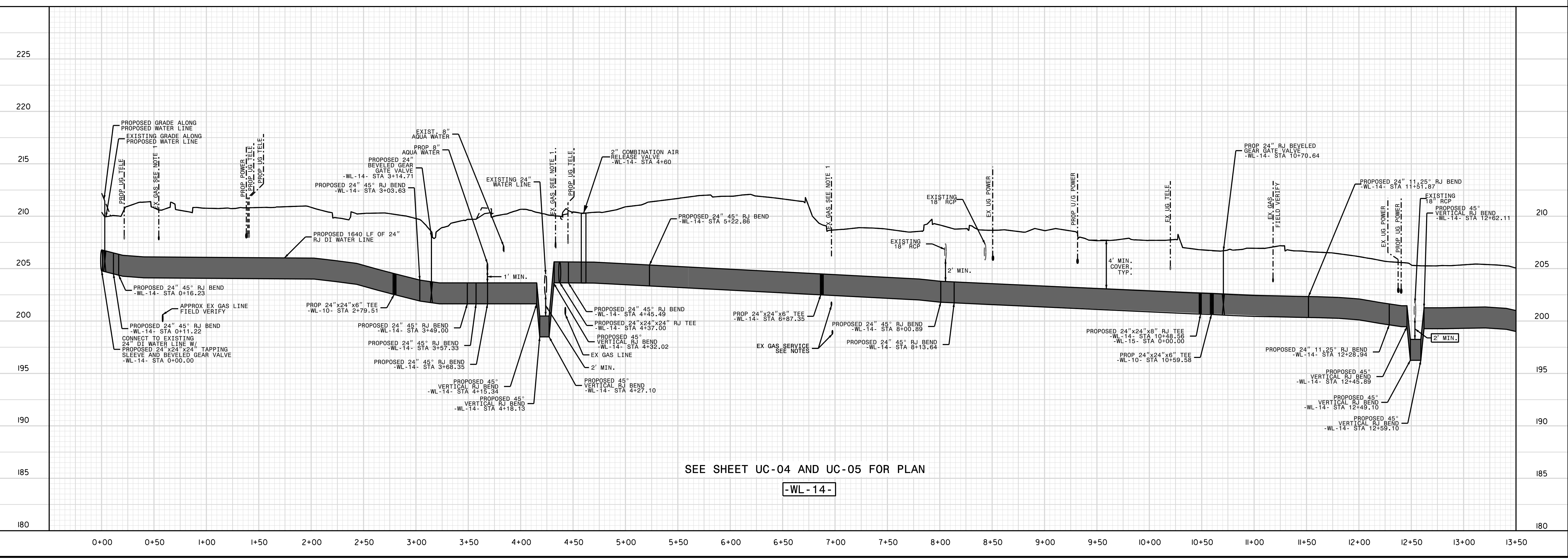
NORTH CAROLINA DEPARTMENT OF TRANSPORTATION
11/26/2024

UTILITIES ENGINEERING SEC. PHONE: (919)707-6690 FAX: (919)250-4151
UTILITY CONSTRUCTION PLANS ONLY

DOCUMENT NOT CONSIDERED FINAL UNTIL ALL SIGNATURES ARE COMPLETED


UTILITY CONSTRUCTION

- NOTES:**
- CONTRACTOR SHALL CONTACT DUKE ENERGY TO VERIFY WHETHER GAS LINES ARE ACTIVE
 - CONTRACTOR SHALL PERFORM SOFT DIGS ALONG THE UTILITY CORRIDOR TO LOCATED EXISTING GAS SERVICE LINES IN CONFLICT WITH THE PROPOSED WATER LINE ALIGNMENT. DUKE ENERGY OPERATIONS TEAM HAS REVIEWED THE LOCATION OF INSTALLED SERVICES AND THEIR PROXIMITY TO THE WATER LINE ALIGNMENT. IT HAS BEEN DETERMINED THAT SOME SERVICES MAY NEED TO BE MOVED BEFORE THE WATER LINE IS INSTALLED. CONTRACTOR SHALL PROVIDE A MINIMUM OF 3 BUSINESS DAYS NOTICE TO DUKE ENERGY'S OPERATIONS AND MAINTENANCE TEAM FOR RELOCATION OF THE SERVICE BEFORE THE WATER LINE IS INSTALLED.




5/28/24
25-NOV-2024 10:03
C:\Projects\2024\Projects\Public Works Commission\2015017700RA_Reeford_Road_NCDOT_U_4405\CADD\NCDOT_PLANS\Utilities\Engineer\UC\Proj\U4405B\U4405B_ut-pl-uc13_psh.dgn

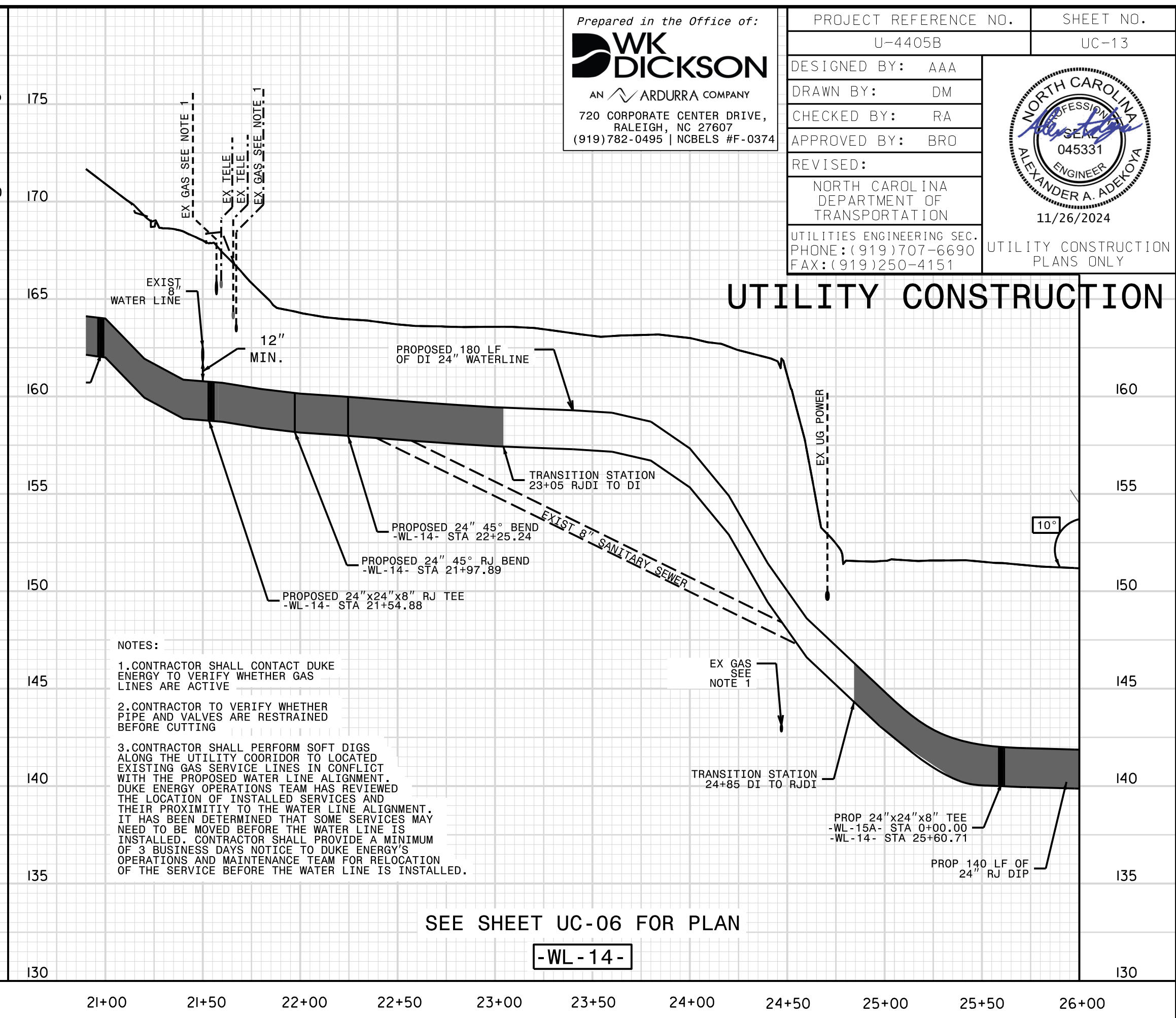
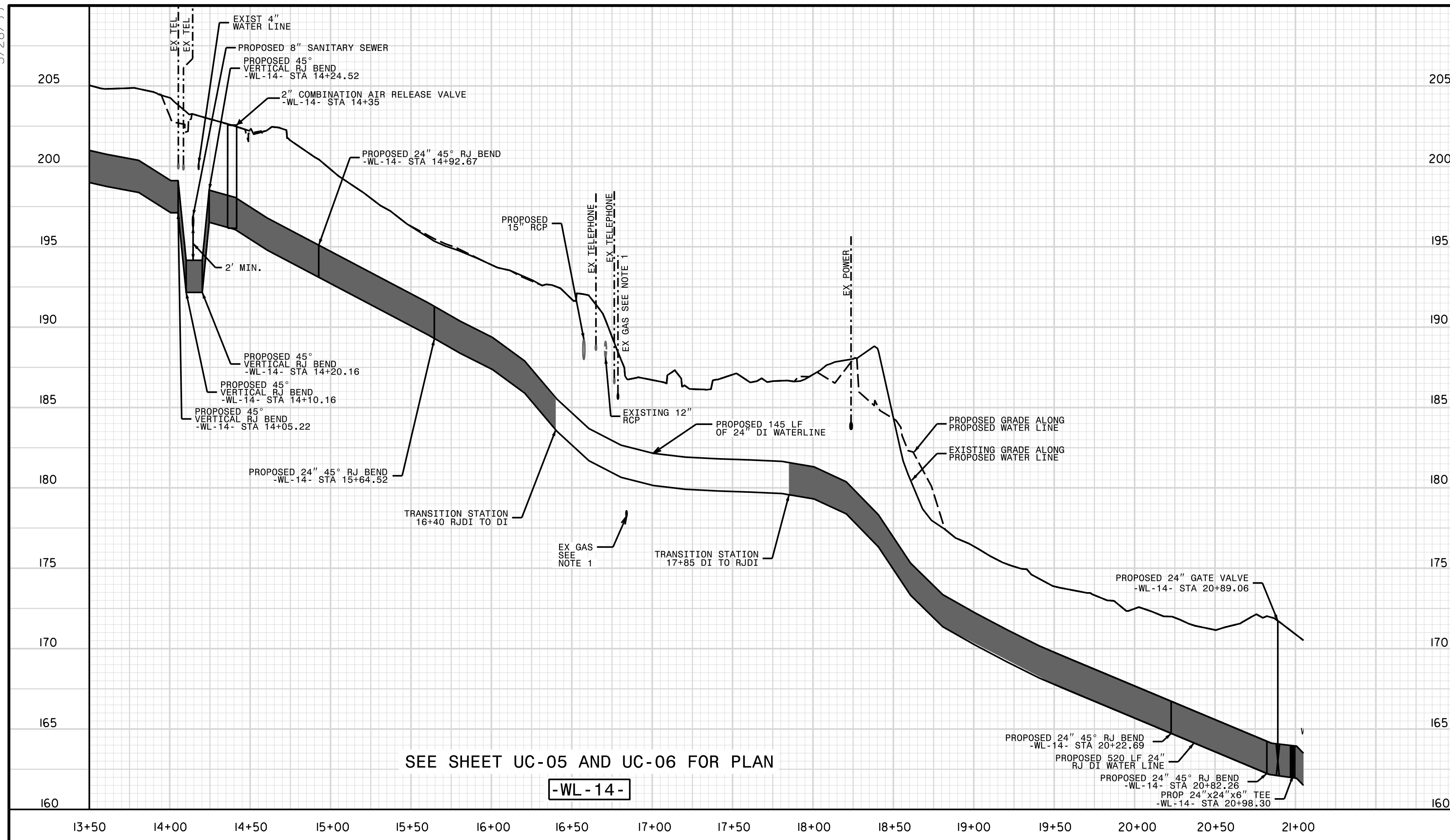
Prepared in the Office of:



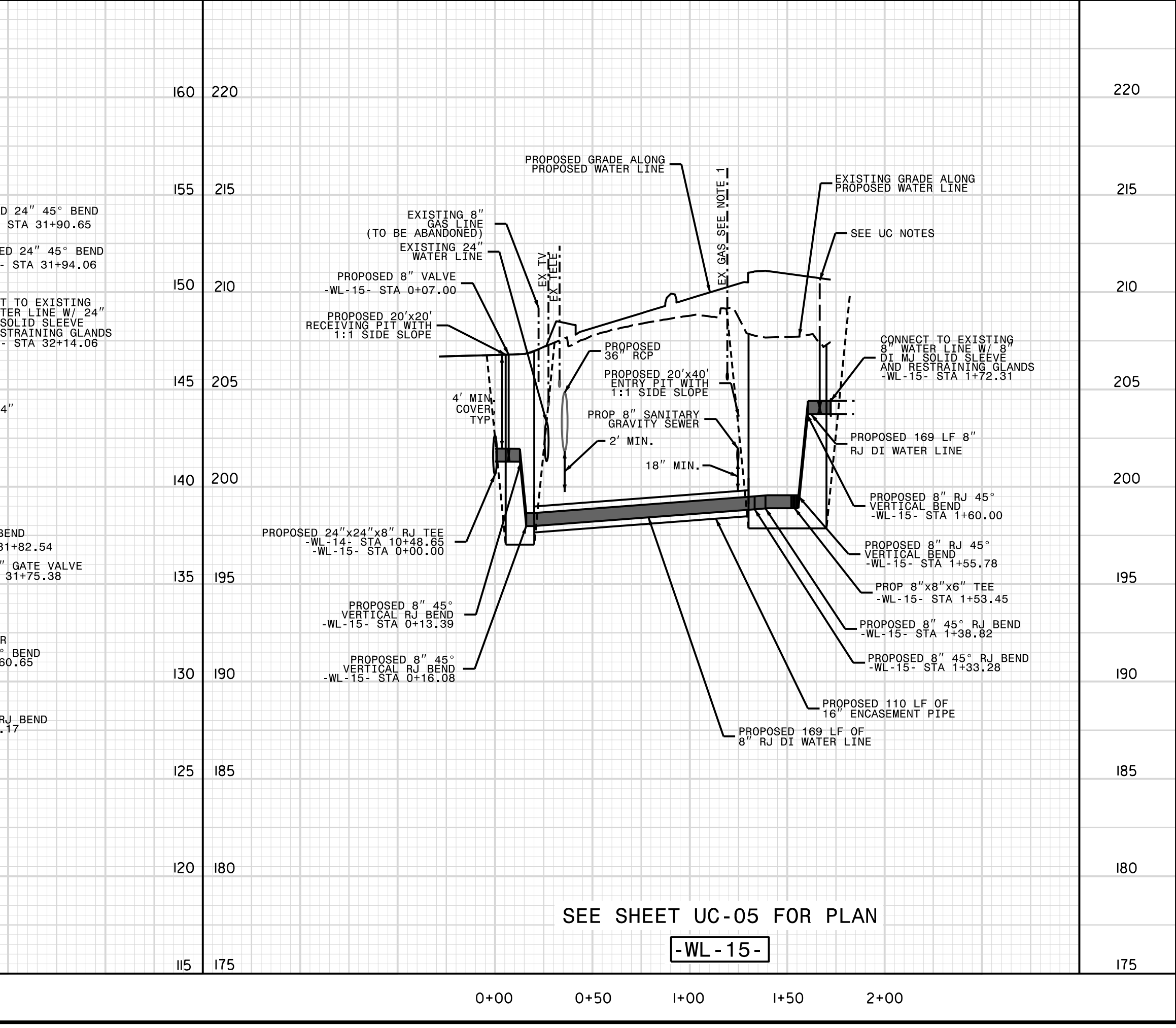
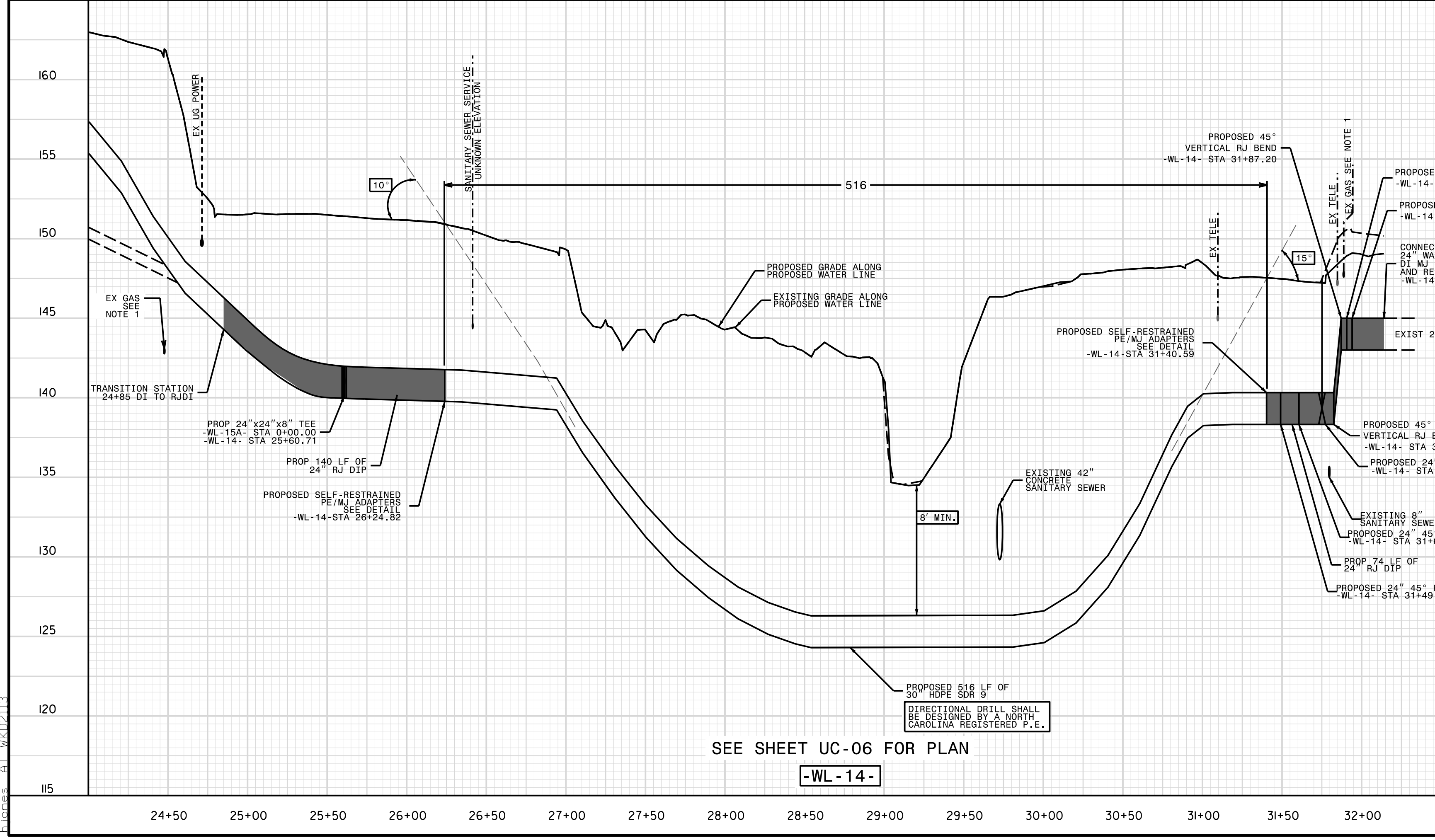
AN ARDURRA COMPANY
720 CORPORATE CENTER DRIVE, RALEIGH, NC 27607
(919)782-0495 | NCBELS #F-0374

PROJECT REFERENCE NO.	U-4405B	SHEET NO.	UC-13
DESIGNED BY:	AAA	 NORTH CAROLINA DEPARTMENT OF TRANSPORTATION 11/26/2024 UTILITIES ENGINEERING SEC. PHONE: (919)707-6690 FAX: (919)250-4151	
DRAWN BY:	DM		
CHECKED BY:	RA		
APPROVED BY:	BRD		
REVISED:			

UTILITY CONSTRUCTION PLANS ONLY



- NOTES:
1. CONTRACTOR SHALL CONTACT DUKE ENERGY TO VERIFY WHETHER GAS LINES ARE ACTIVE.
 2. CONTRACTOR TO VERIFY WHETHER PIPE AND VALVES ARE RESTRAINED BEFORE CUTTING.
 3. CONTRACTOR SHALL PERFORM SOFT DIGS ALONG THE UTILITY CORRIDOR TO LOCATED EXISTING GAS SERVICE LINES IN CONFLICT WITH THE PROPOSED WATER LINE ALIGNMENT. DUKE ENERGY OPERATIONS TEAM HAS REVIEWED THE LOCATION OF INSTALLED SERVICES AND THEIR PROXIMITY TO THE WATER LINE ALIGNMENT. IT HAS BEEN DETERMINED THAT SOME SERVICES MAY NEED TO BE MOVED BEFORE THE WATER LINE IS INSTALLED. CONTRACTOR SHALL PROVIDE A MINIMUM OF 3 BUSINESS DAYS NOTICE TO DUKE ENERGY'S OPERATIONS AND MAINTENANCE TEAM FOR RELOCATION OF THE SERVICE BEFORE THE WATER LINE IS INSTALLED.

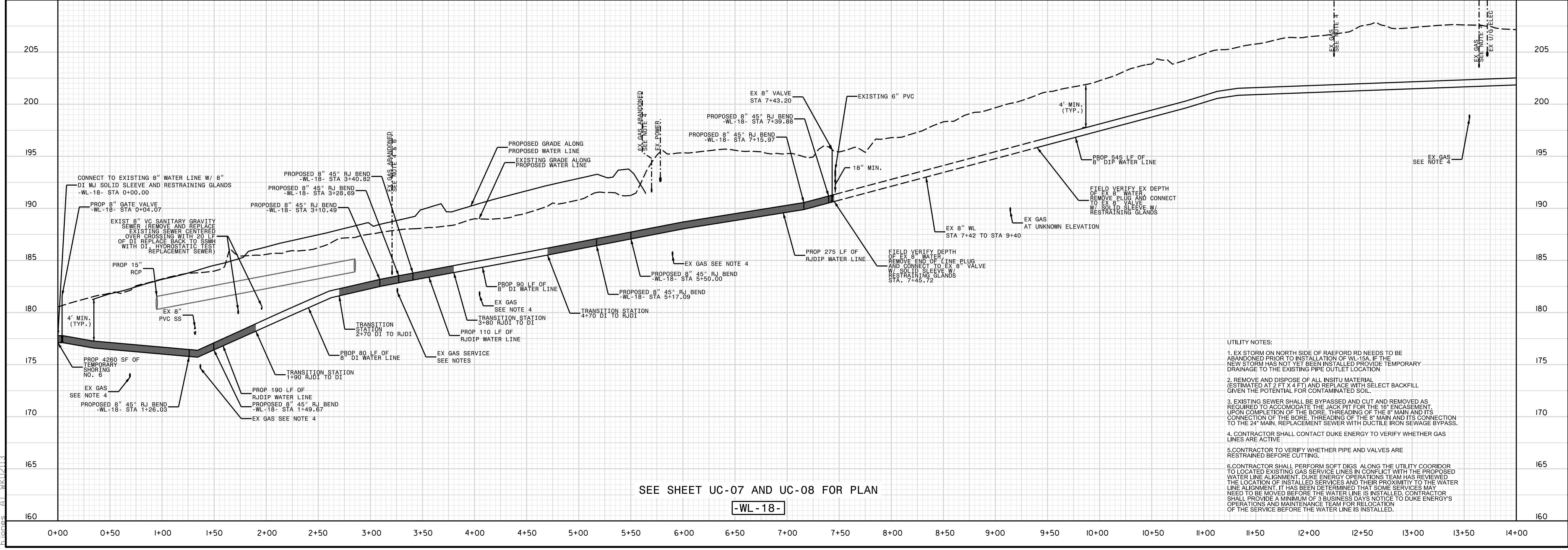
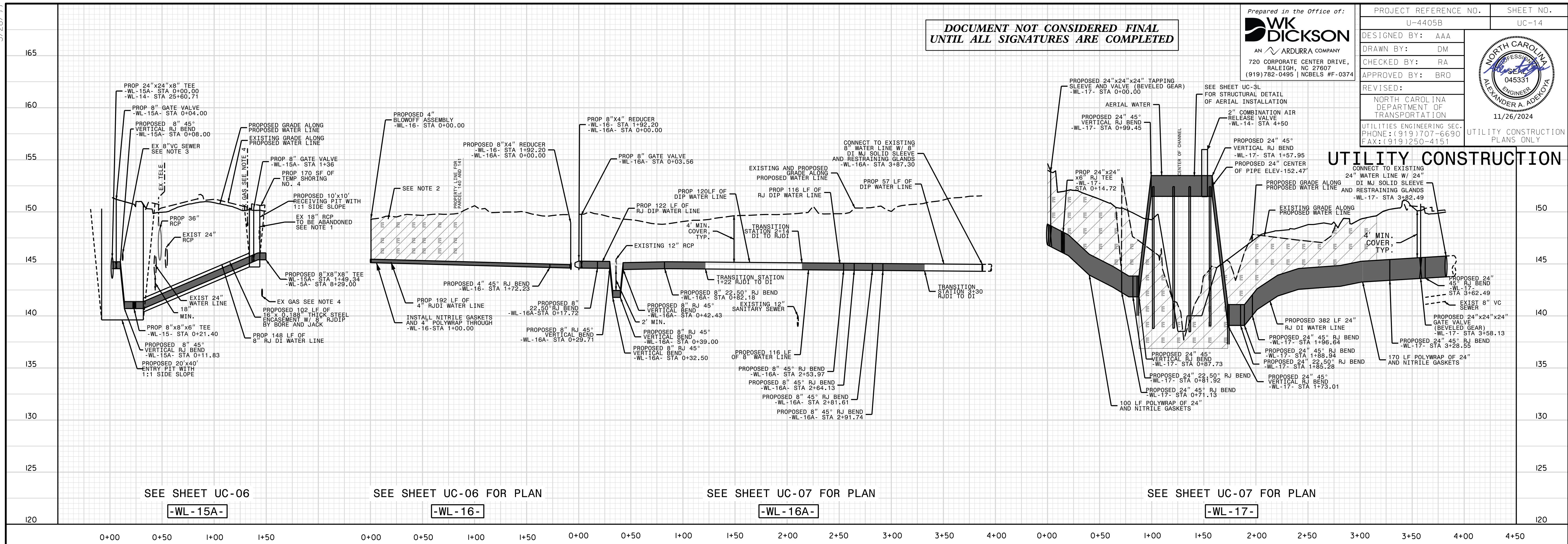


5/28/2024
 25-NOV-2024 10:03
 C:\Users\jg3\Documents\Favorites\Public Works Commission\2015017700RA Raeford Road NCDOT U 4405\CADD\NCDOT PLANS\Utilities\Engineer\ng\UC\Proj\U4405B\U4405B-ut-.pfl\uc14_psh.dgn
 10/25/2024 10:03
 C:\Users\jg3\Documents\Favorites\Public Works Commission\2015017700RA Raeford Road NCDOT U 4405\CADD\NCDOT PLANS\Utilities\Engineer\ng\UC\Proj\U4405B\U4405B-ut-.pfl\uc14_psh.dgn

**DOCUMENT NOT CONSIDERED FINAL
UNTIL ALL SIGNATURES ARE COMPLETED**



PROJECT REFERENCE NO.	U-4405B	SHEET NO.	UC-14
DESIGNED BY:	AAA		
DRAWN BY:	DM		
CHECKED BY:	RA		
APPROVED BY:	BRD		
REVISED:			
NORTH CAROLINA DEPARTMENT OF TRANSPORTATION UTILITIES ENGINEERING SEC. PHONE: (919) 707-6690 FAX: (919) 250-4151		UTILITY CONSTRUCTION PLANS ONLY	

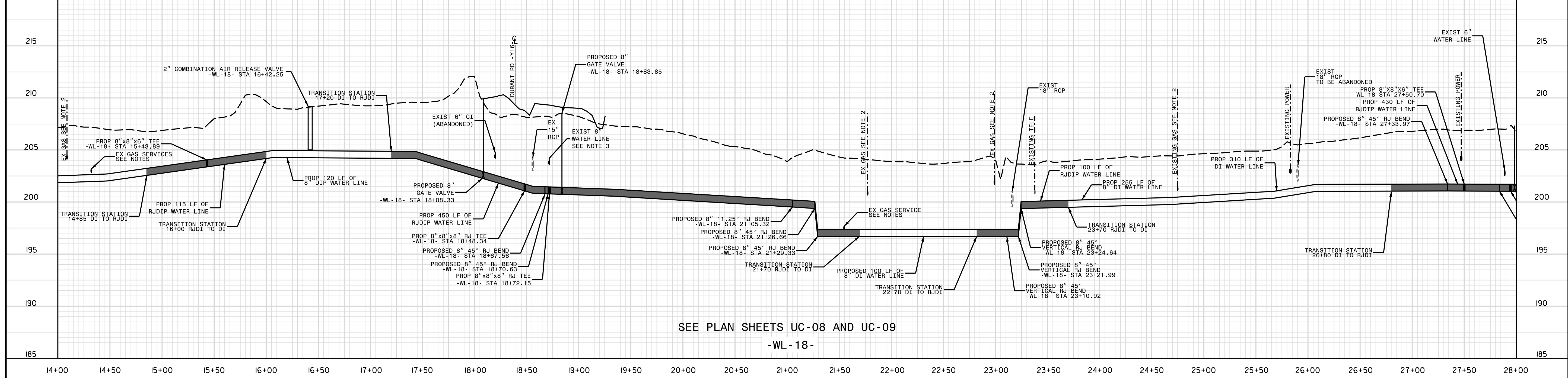


- UTILITY NOTES:**
- EX STORM ON NORTH SIDE OF RAEFORD RD NEEDS TO BE ABANDONED PRIOR TO INSTALLATION OF WL-15A. IF THE NEW STORM HAS NOT YET BEEN INSTALLED PROVIDE TEMPORARY DRAINAGE TO THE EXISTING PIPE OUTLET LOCATION
 - REMOVE AND DISPOSE OF ALL INSITU MATERIAL (ESTIMATED AT 2 FT X 4 FT) AND REPLACE WITH SELECT BACKFILL GIVEN THE POTENTIAL FOR CONTAMINATED SOIL
 - EXISTING SEWER SHALL BE BYPASSED AND OUT AND REMOVED AS REQUIRED TO ACCOMMODATE THE JACK PIT FOR THE 18" ENCASMENT. UPON COMPLETION OF THE BORE, THREADING OF THE 8" MAIN AND ITS CONNECTION TO THE BORE, THREADING OF THE 8" MAIN AND ITS CONNECTION TO THE 24" MAIN, REPLACEMENT SEWER WITH DUCTILE IRON SEWAGE BYPASS.
 - CONTRACTOR SHALL CONTACT DUKE ENERGY TO VERIFY WHETHER GAS LINES ARE ACTIVE
 - CONTRACTOR TO VERIFY WHETHER PIPE AND VALVES ARE RESTRAINED BEFORE CUTTING.
 - CONTRACTOR SHALL PERFORM SOFT DIGS ALONG THE UTILITY CORRIDOR TO LOCATED EXISTING GAS SERVICE LINES IN CONFLICT WITH THE PROPOSED WATER LINE ALIGNMENT. DUKE ENERGY OPERATIONS TEAM HAS REVIEWED THE LOCATION OF INSTALLED SERVICES AND THEIR PROXIMITY TO THE WATER LINE ALIGNMENT. IT HAS BEEN DETERMINED THAT SOME SERVICES MAY NEED TO BE MOVED BEFORE THE WATER LINE IS INSTALLED. CONTRACTOR SHALL PROVIDE A MINIMUM OF 3 BUSINESS DAYS NOTICE TO DUKE ENERGY'S OPERATIONS AND MAINTENANCE TEAM FOR RELOCATION OF THE SERVICE BEFORE THE WATER LINE IS INSTALLED.

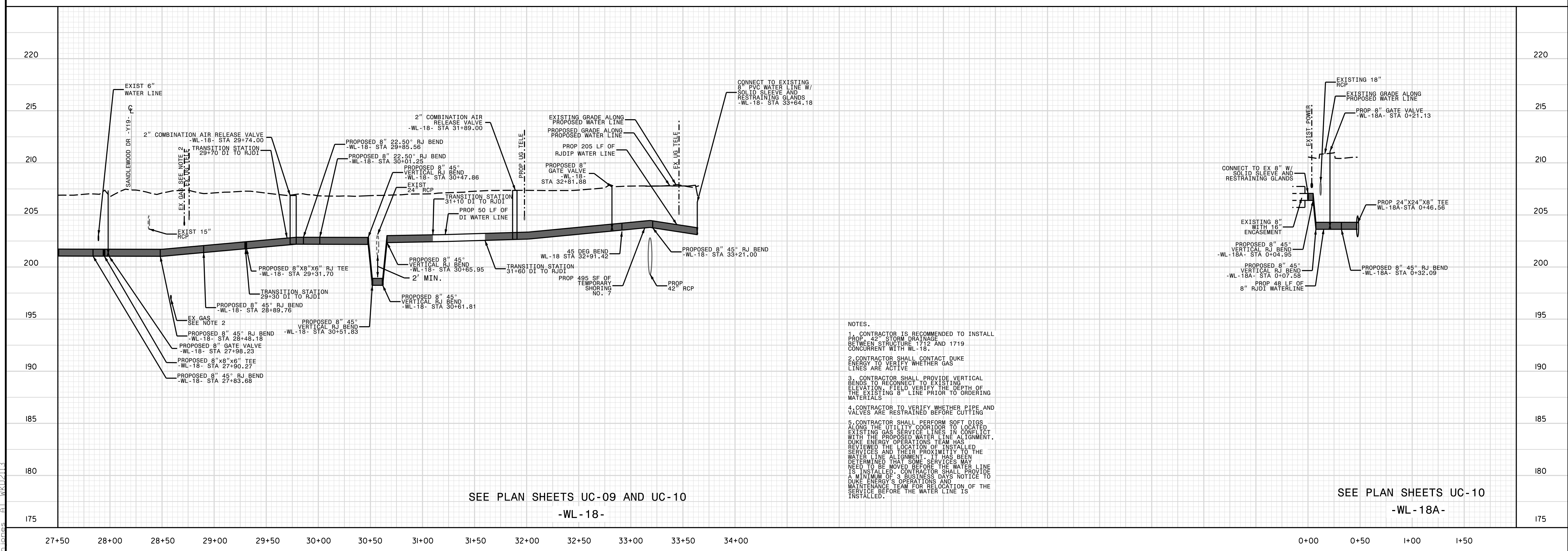
5/28/24
25-NOV-2024 10:04
C:\Projects\Public Works Commission\2015017700RA_Reeford Road NCDOT U-4405\CAADD\NCDOT PLANS\Utilities\Engineering\U-4405B\U4405B-ut-pl-uc15_psh.dgn

<p>Prepared in the Office of: AN ARDURRA COMPANY 720 CORPORATE CENTER DRIVE, RALEIGH, NC 27607 (919)782-0495 NCBELS #F-0374</p>	PROJECT REFERENCE NO. U-4405B	SHEET NO. UC-15
	DESIGNED BY: AAA DRAWN BY: DM CHECKED BY: RA APPROVED BY: BRO	<p>NORTH CAROLINA ALEXANDER A. ADEJOYA ENGINEER 11/26/2024</p>
DOCUMENT NOT CONSIDERED FINAL UNTIL ALL SIGNATURES ARE COMPLETED	REVISDED: NORTH CAROLINA DEPARTMENT OF TRANSPORTATION UTILITIES ENGINEERING SEC. PHONE: (919) 707-6690 FAX: (919) 250-4151	

UTILITY CONSTRUCTION



SEE PLAN SHEETS UC-08 AND UC-09
-WL-18-



SEE PLAN SHEETS UC-09 AND UC-10
-WL-18A-

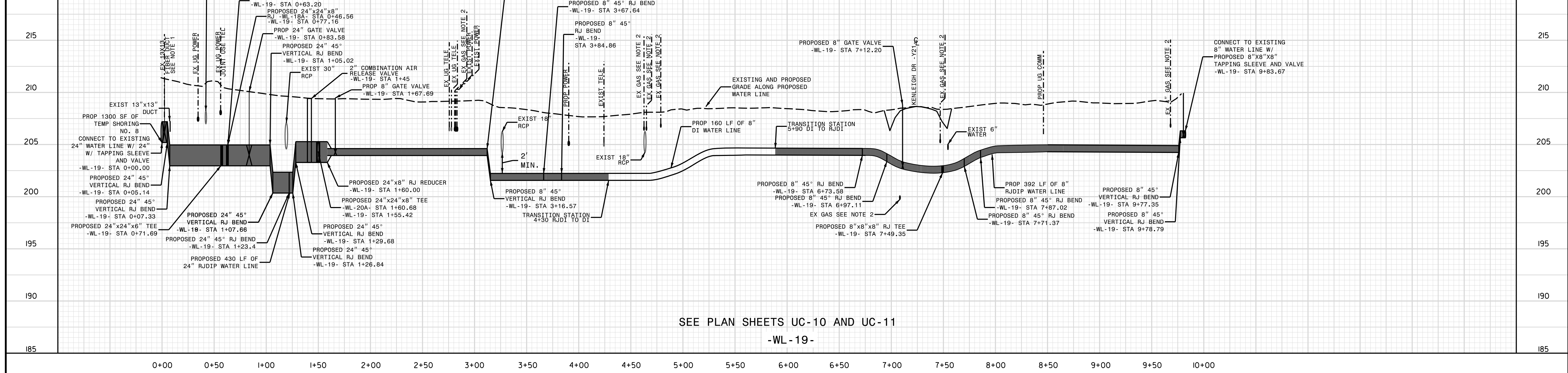
- NOTES.
- CONTRACTOR IS RECOMMENDED TO INSTALL PROP. 42" STORM DRAINAGE BETWEEN STRUCTURE 1772 AND 1719 CONCURRENT WITH WL-18.
 - CONTRACTOR SHALL CONTACT DUKE ENERGY TO VERIFY WHETHER GAS LINES ARE ACTIVE.
 - CONTRACTOR SHALL PROVIDE VERTICAL BENDS TO RECONNECT TO EXISTING ELEVATION. FIELD VERIFY THE DEPTH OF THE EXISTING 8" LINE PRIOR TO ORDERING MATERIALS.
 - CONTRACTOR TO VERIFY WHETHER PIPE AND VALVES ARE RESTRAINED BEFORE CUTTING.
 - CONTRACTOR SHALL PERFORM SOFT DIGS ALONG THE UTILITY CORRIDOR TO LOCATED EXISTING GAS SERVICE LINES IN CONFLICT WITH THE PROPOSED WATER LINE ALIGNMENT. DUKE ENERGY OPERATIONS TEAM HAS REVIEWED THE LOCATION OF INSTALLED SERVICES AND THEIR PROXIMITY TO THE WATER LINE ALIGNMENT. IT HAS BEEN DETERMINED THAT SOME SERVICES MAY NEED TO BE MOVED BEFORE THE WATER LINE IS INSTALLED. CONTRACTOR SHALL PROVIDE A MINIMUM OF 3 BUSINESS DAYS NOTICE TO DUKE ENERGY'S OPERATIONS AND MAINTENANCE TEAM FOR RELOCATION OF THE SERVICE BEFORE THE WATER LINE IS INSTALLED.

5/28/24
25-NOV-2024 10:04
C:\Users\jg3\Documents\Public Works Commission\2015017700RA Reeford Road NCDOT U 4405\CADD\NCDOT PLANS\Utilities\Engineering\UC-Proj\U4405B\U4405B-ut-pl-uc16-psd.dgn

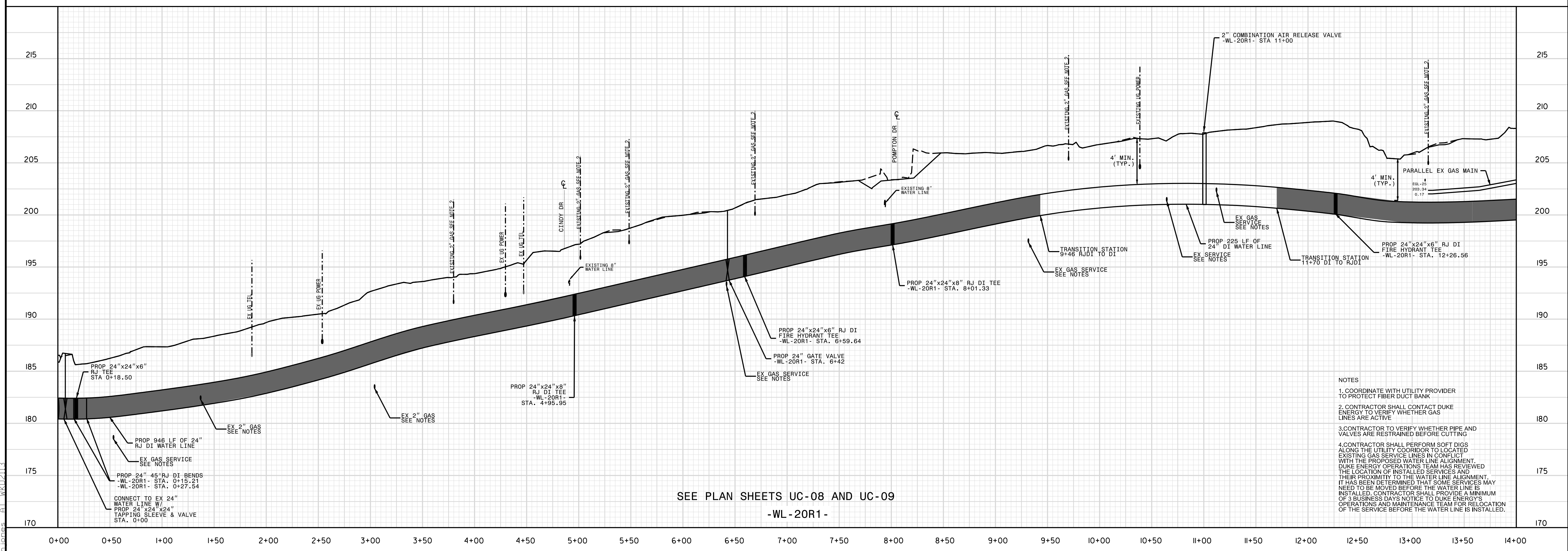
Prepared in the Office of: AN ARDURRA COMPANY 720 CORPORATE CENTER DRIVE, RALEIGH, NC 27607 (919)782-0495 NGBELS #F-0374	PROJECT REFERENCE NO.	SHEET NO.
	U-4405B	UC-16
	DESIGNED BY: AAA	
	DRAWN BY: DM	
	CHECKED BY: RA	
APPROVED BY: BRO	REVISED:	
UTILITIES ENGINEERING SEC. PHONE: (919)707-6690 FAX: (919)250-4151		UTILITY CONSTRUCTION PLANS ONLY

DOCUMENT NOT CONSIDERED FINAL UNTIL ALL SIGNATURES ARE COMPLETED

UTILITY CONSTRUCTION



SEE PLAN SHEETS UC-10 AND UC-11
-WL-19-



SEE PLAN SHEETS UC-08 AND UC-09
-WL-20R1-

- NOTES**
- COORDINATE WITH UTILITY PROVIDER TO PROTECT FIBER DUCT BANK
 - CONTRACTOR SHALL CONTACT DUKE ENERGY TO VERIFY WHETHER GAS LINES ARE ACTIVE
 - CONTRACTOR TO VERIFY WHETHER PIPE AND VALVES ARE RESTRAINED BEFORE CUTTING
 - CONTRACTOR SHALL PERFORM SOFT DIGS ALONG THE UTILITY CORRIDOR TO LOCATE EXISTING GAS SERVICE LINES IN CONFLICT WITH THE PROPOSED WATER LINE ALIGNMENT. DUKE ENERGY OPERATIONS TEAM HAS REVIEWED THE LOCATION OF INSTALLED SERVICES AND THEIR PROXIMITY TO THE WATER LINE ALIGNMENT. IT HAS BEEN DETERMINED THAT SOME SERVICES MAY NEED TO BE MOVED BEFORE THE WATER LINE IS INSTALLED. CONTRACTOR SHALL PROVIDE A MINIMUM OF 3 BUSINESS DAYS NOTICE TO DUKE ENERGY'S OPERATIONS AND MAINTENANCE TEAM FOR RELOCATION OF THE SERVICE BEFORE THE WATER LINE IS INSTALLED.

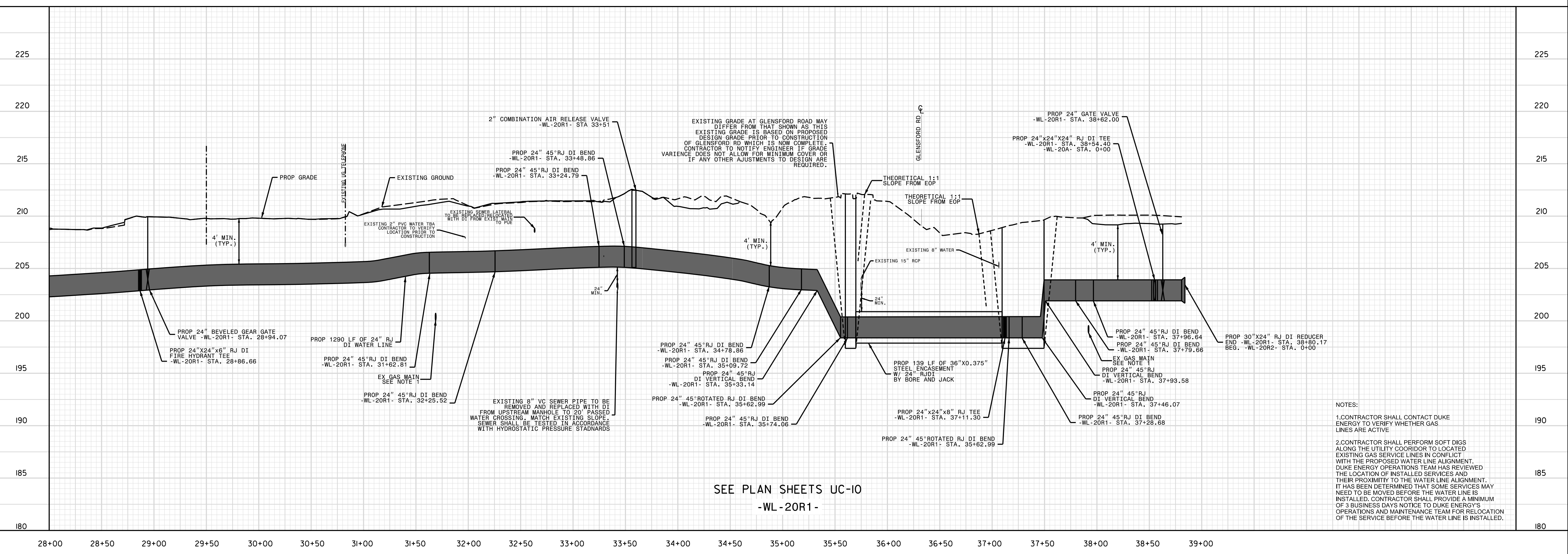
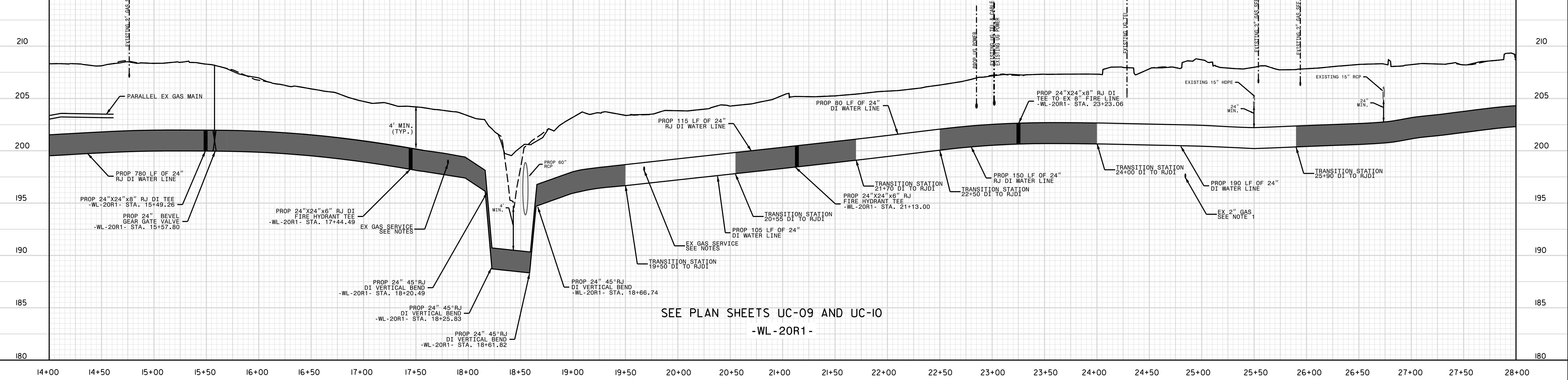
5/28/2024

C:\Users\Public\Documents\2015017700RA_Reeford-Road_NCDOT_U-4405B\CADD\NCDOT_PLANS\Utilities\Engineering\UC-Proj\U4405B\U4405B-ut-.pfl\uc17_psh.dgn

Prepared in the Office of: WK DICKSON AN ARDURRA COMPANY 720 CORPORATE CENTER DRIVE, RALEIGH, NC 27607 (919)782-0495 NCBELS #F-0374	PROJECT REFERENCE NO. U-4405B	SHEET NO. UC-17
	DESIGNED BY: AAA	
DRAWN BY: DM	UTILITIES ENGINEERING SEC. PHONE: (919)707-6690 FAX: (919)250-4151	
CHECKED BY: RA	UTILITY CONSTRUCTION PLANS ONLY	
APPROVED BY: BRO		
REVISED:		

DOCUMENT NOT CONSIDERED FINAL UNTIL ALL SIGNATURES ARE COMPLETED

UTILITY CONSTRUCTION



25-NOV-2024 10:04 AM
C:\Users\Public\Documents\2015017700RA_Reeford-Road_NCDOT_U-4405B\CADD\NCDOT_PLANS\Utilities\Engineering\UC-Proj\U4405B\U4405B-ut-.pfl\uc17_psh.dgn