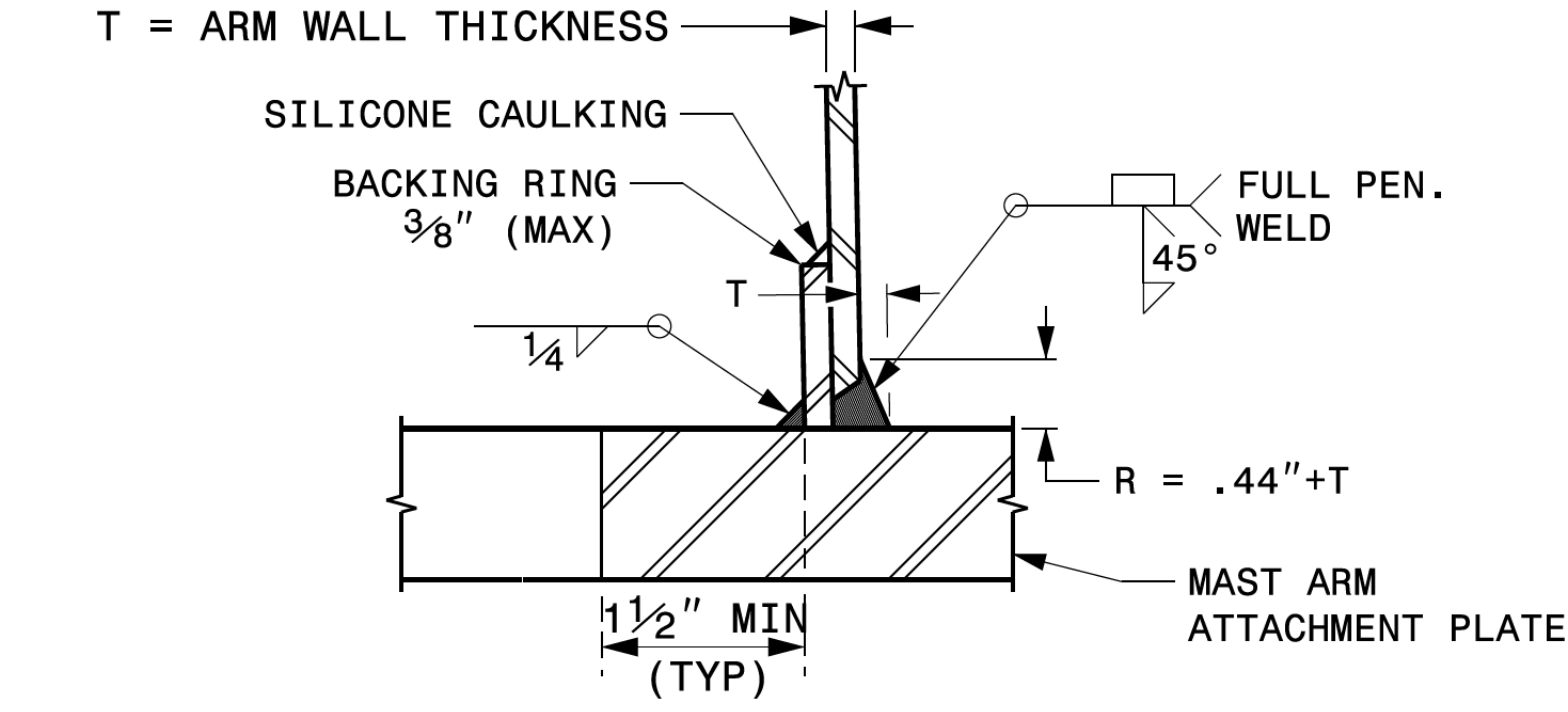
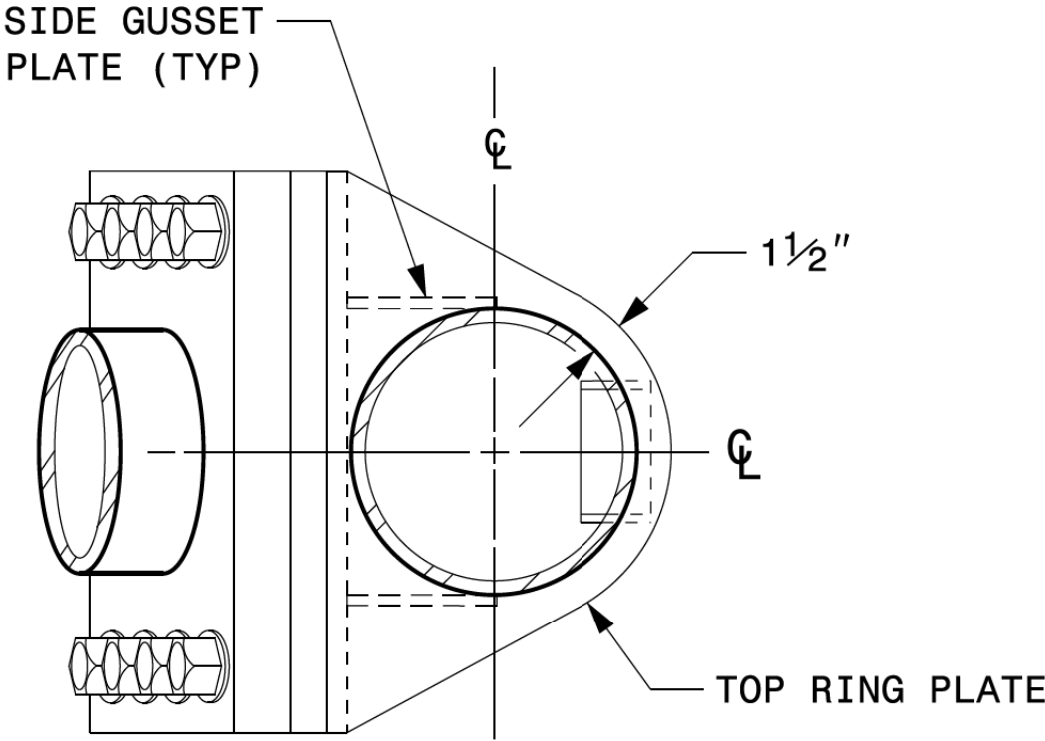


# WELDED RING STIFFENED MAST ARM CONNECTION



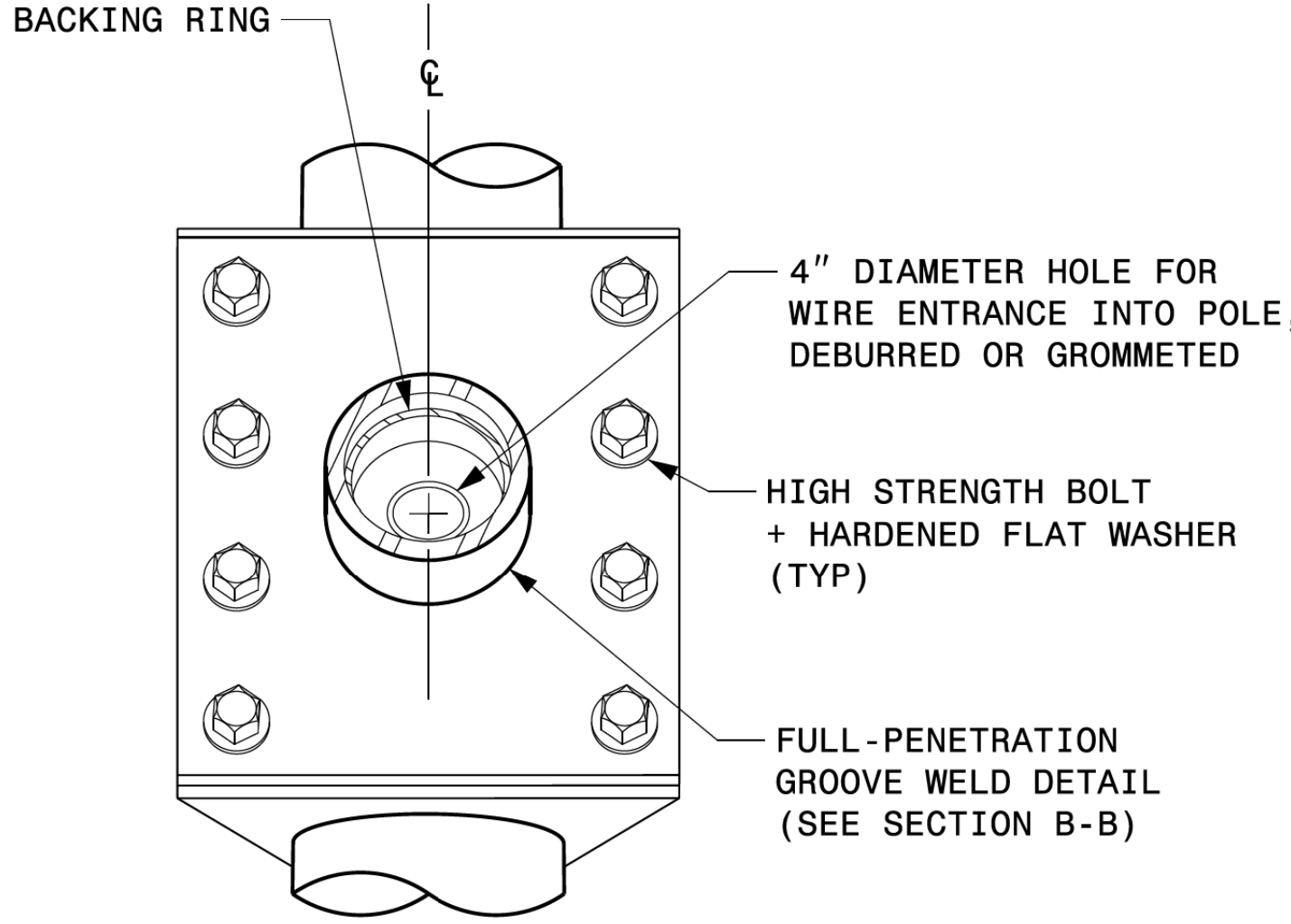
### SECTION B-B FULL-PENETRATION GROOVE WELD DETAIL



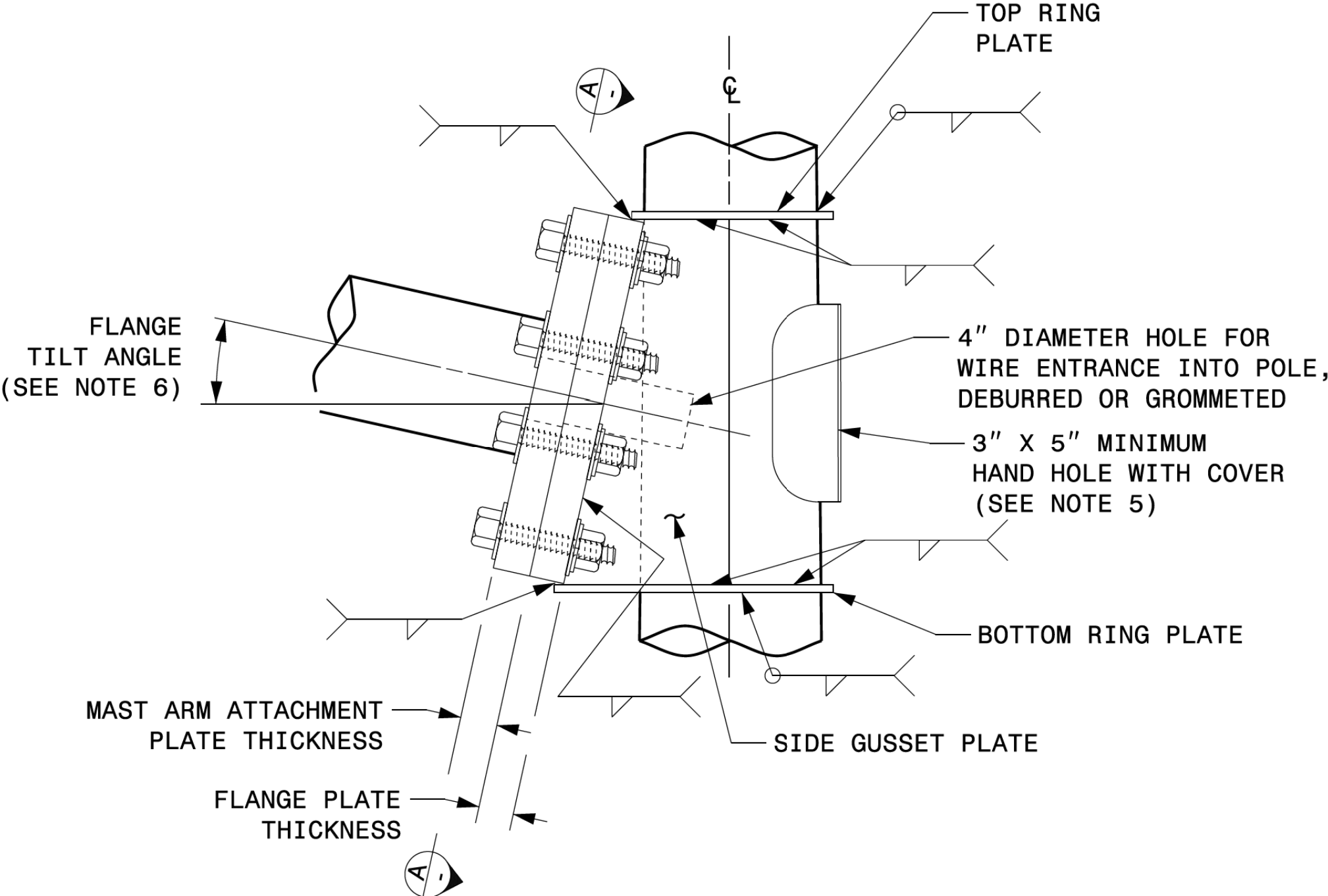
### PLAN VIEW

### NOTES:

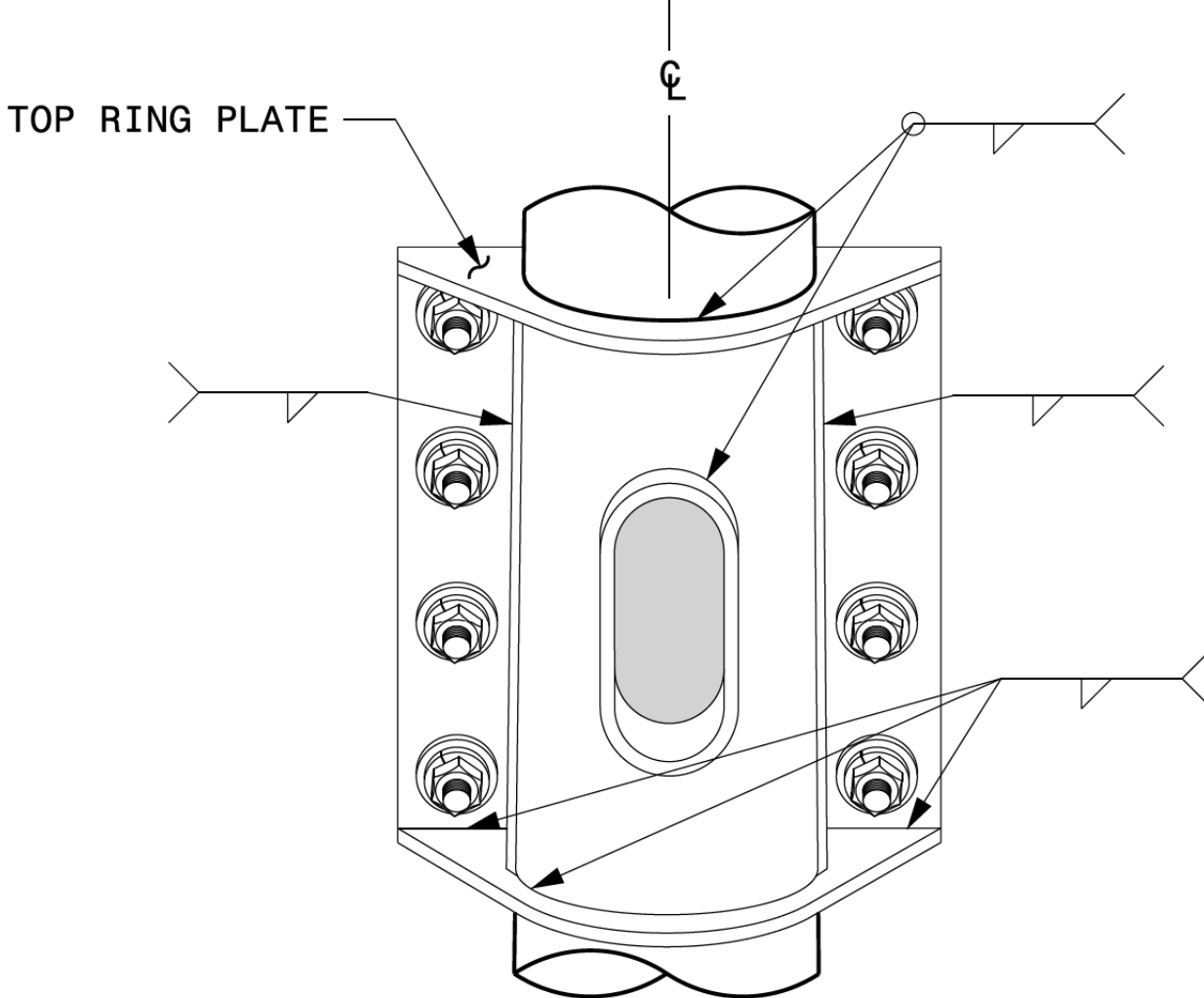
- 1. PROVIDE A PERMANENT MEANS OF IDENTIFICATION ABOVE THE MAST ARM TO INDICATE PROPER ATTACHMENT ORIENTATION OF THE MAST ARM.
- 2. DESIGNER WILL DETERMINE THE SIZE OF ALL STRUCTURAL COMPONENTS, PLATES, FASTENERS, AND WELDS SHOWN UNLESS THEY ARE ALREADY SPECIFIED.
- 3. FABRICATOR IS RESPONSIBLE FOR PROVIDING APPROPRIATE HOLES AT DRAINAGE POINTS TO DRAIN GALVANIZING MATERIALS.
- 4. FOR MINIMUM EDGE DISTANCE AND NOMINAL BOLT HOLE SIZE, FOLLOW THE LATEST AISC STEEL CONSTRUCTION MANUAL.
- 5. PROVIDE UPPER HANDHOLE AS NECESSARY WHEN SHAFT EXTENSIONS ARE REQUIRED FOR LUMINAIRE ARMS OR CAMERA. FOR POLES WITHOUT LUMINAIRES/CAMERA, WIRING CAN BE DONE THROUGH THE TOP OF POLE.
- 6. ALLOWABLE RANGE OF FLANGE TILT ANGLE WILL VARY FROM 0° TO AS REQUIRED.



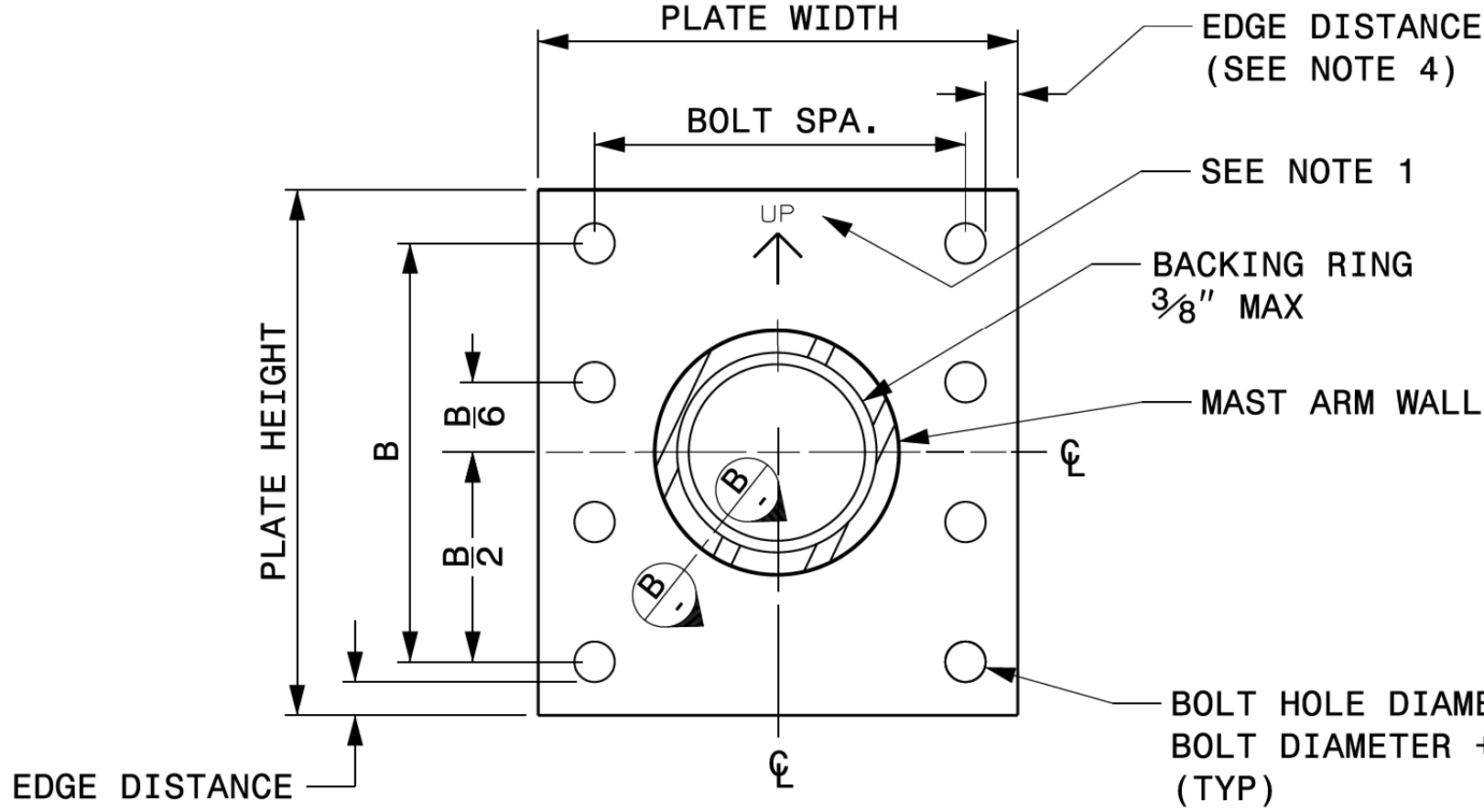
### FRONT ELEVATION VIEW



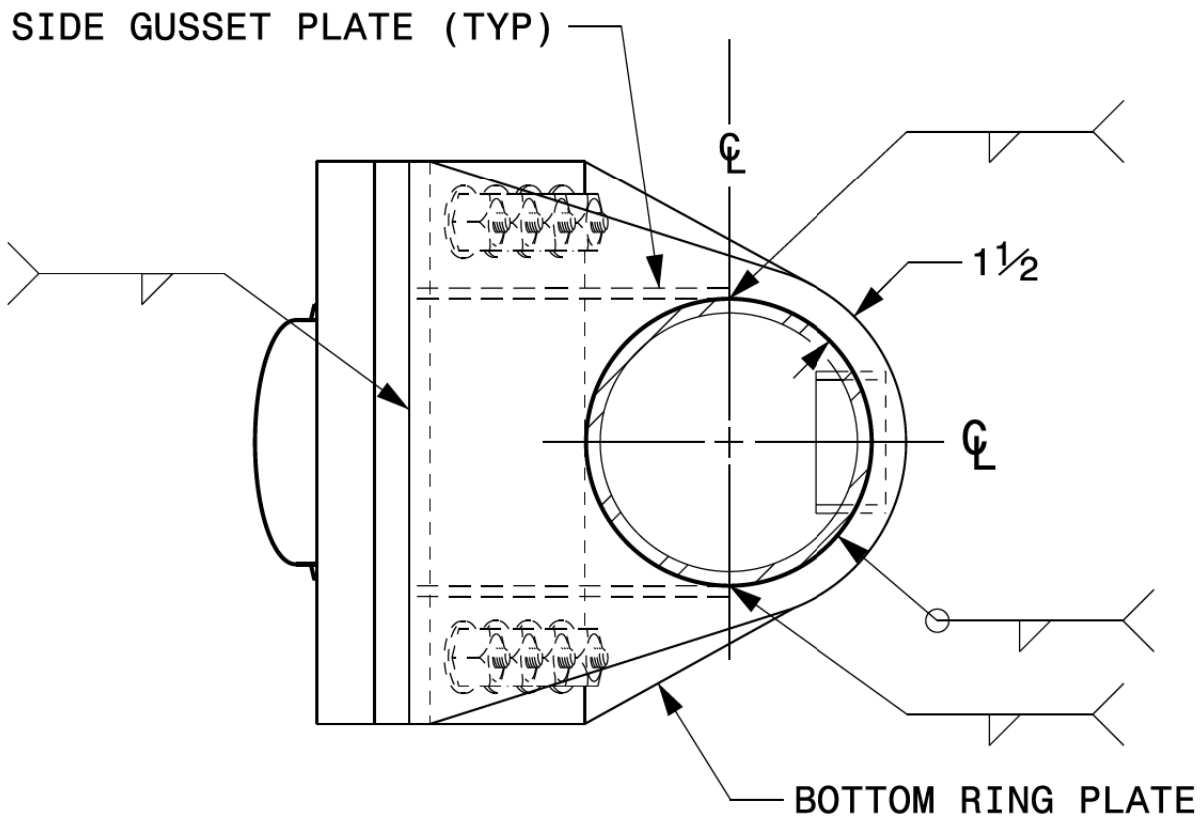
### SIDE ELEVATION VIEW



### BACK ELEVATION VIEW

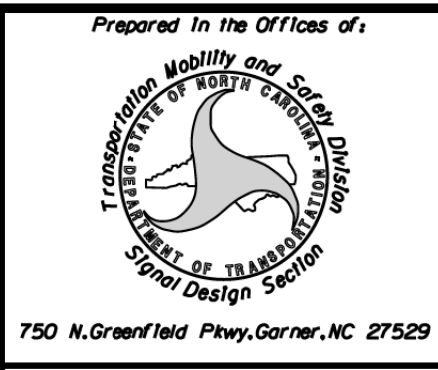


### SECTION A-A MAST ARM ATTACHMENT PLATE



### BOTTOM VIEW

03-10-2023 12:38 S:\TSS\545\1115\Sig.M5\1115\_Sig.M5.dwg KCD:R:100



### Typical Fabrication Details For Mast Arm Connection To Pole

PLAN DATE: SEPTEMBER 2023 DESIGNED BY: C.F. ANDREWS  
PREPARED BY: K.C. DURIGON REVIEWED BY: D.C. SARKAR

SCALE: NA  
NONE

REVISIONS	INIT.	DATE

DocuSigned by: Kevin Durigon

4B23DC78B3784DA

09/21/2023 DATE

**Fabrication Details – Mast Arm Connection**