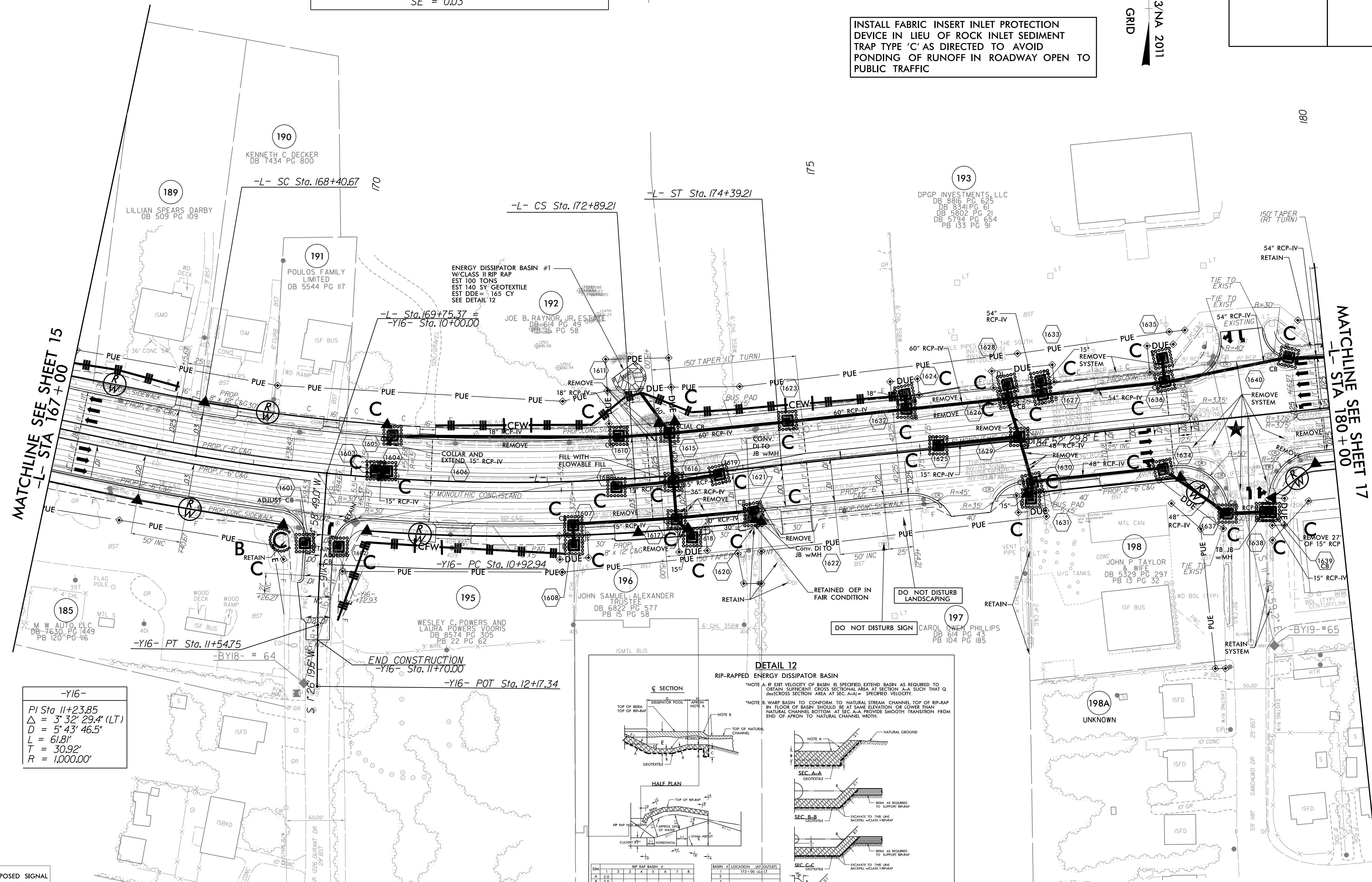


NAD 83/NA 2011
NC GRID

-L-
 Pls Sta 167+90.68 Pls Sta 170+65.98 Pls Sta 173+39.22
 $\Theta_s = 2' 14' 59.4"$ $\Delta = 13' 27' 18.9"$ (LT) $\Theta_s = 2' 14' 59.4"$
 $L_s = 150.00'$ $D = 2' 59' 59.2"$ $L_s = 150.00'$
 $LT = 100.01'$ $L = 448.54'$ $LT = 100.01'$
 $ST = 50.01'$ $T = 225.31'$ $ST = 50.01'$
 $R = 1,910.00'$
 $SE = 0.03$

INSTALL FABRIC INSERT INLET PROTECTION DEVICE IN LIEU OF ROCK INLET SEDIMENT TRAP TYPE 'C' AS DIRECTED TO AVOID PONDING OF RUNOFF IN ROADWAY OPEN TO PUBLIC TRAFFIC

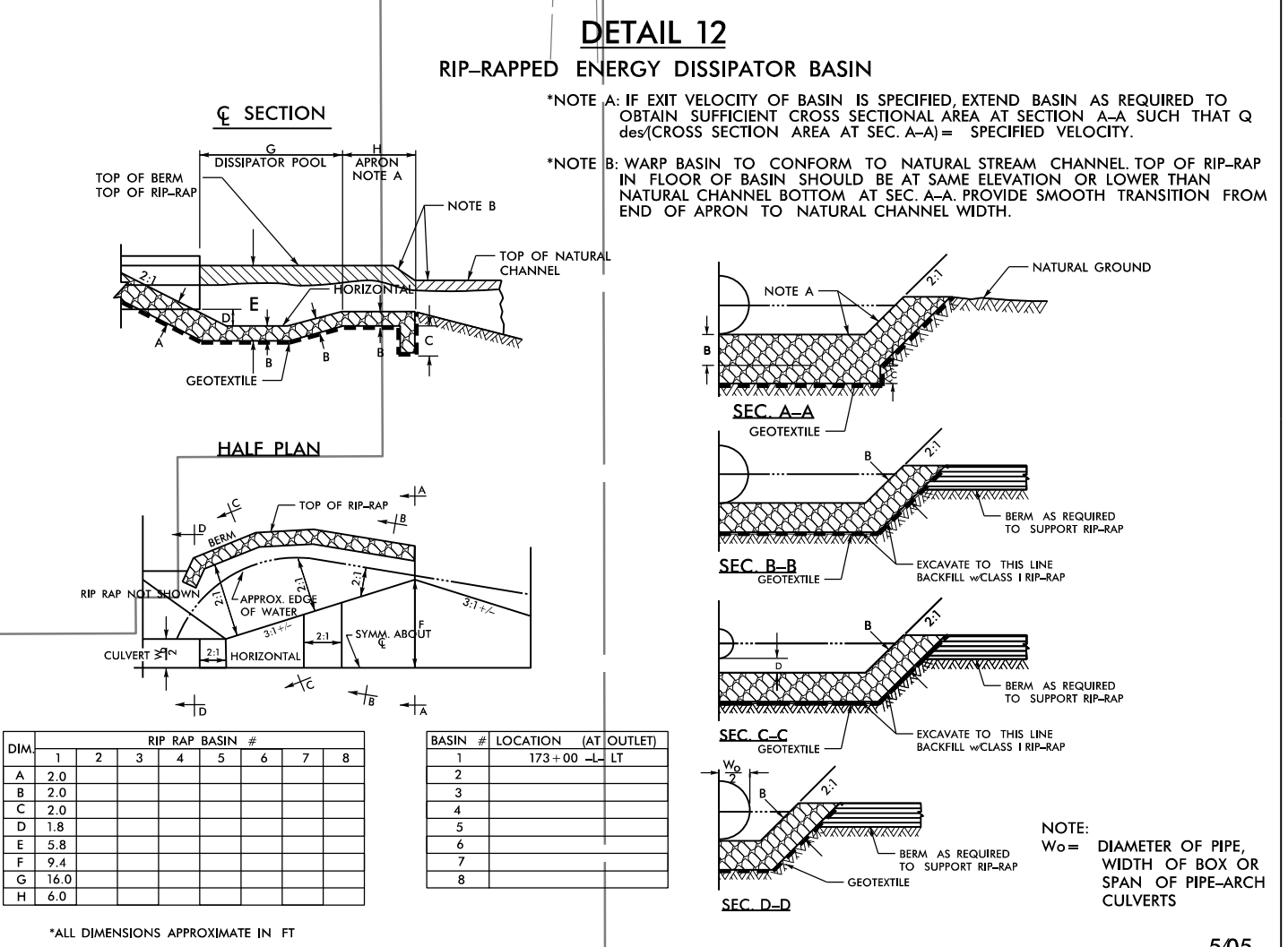


MATCHLINE SEE SHEET 15
-L- STA 167+00

MATCHLINE SEE SHEET 17
-L- STA 180+00

-Y16-
 PI Sta 11+23.85
 $\Delta = 3' 32' 29.4"$ (LT)
 $D = 5' 43' 46.5"$
 $L = 61.8'$
 $T = 30.92'$
 $R = 1,000.00'$

END CONSTRUCTION
-Y16- Sta. 11+70.00



★ PROPOSED SIGNAL

■ PROP CONC SIDEWALK

** A DESIGN EXCEPTION FOR LANE WIDTH IS REQUIRED FOR -L- STA. 38+95.00 TO -L- 319+95.00

NOTE: SEE SHEET 38 & 39 FOR -L- PROFILE
SEE SHEET 48 FOR -Y16- PROFILE

REVISIONS

10/8/2024 10:44:05_REU_EC_psh_16_Final.dgn