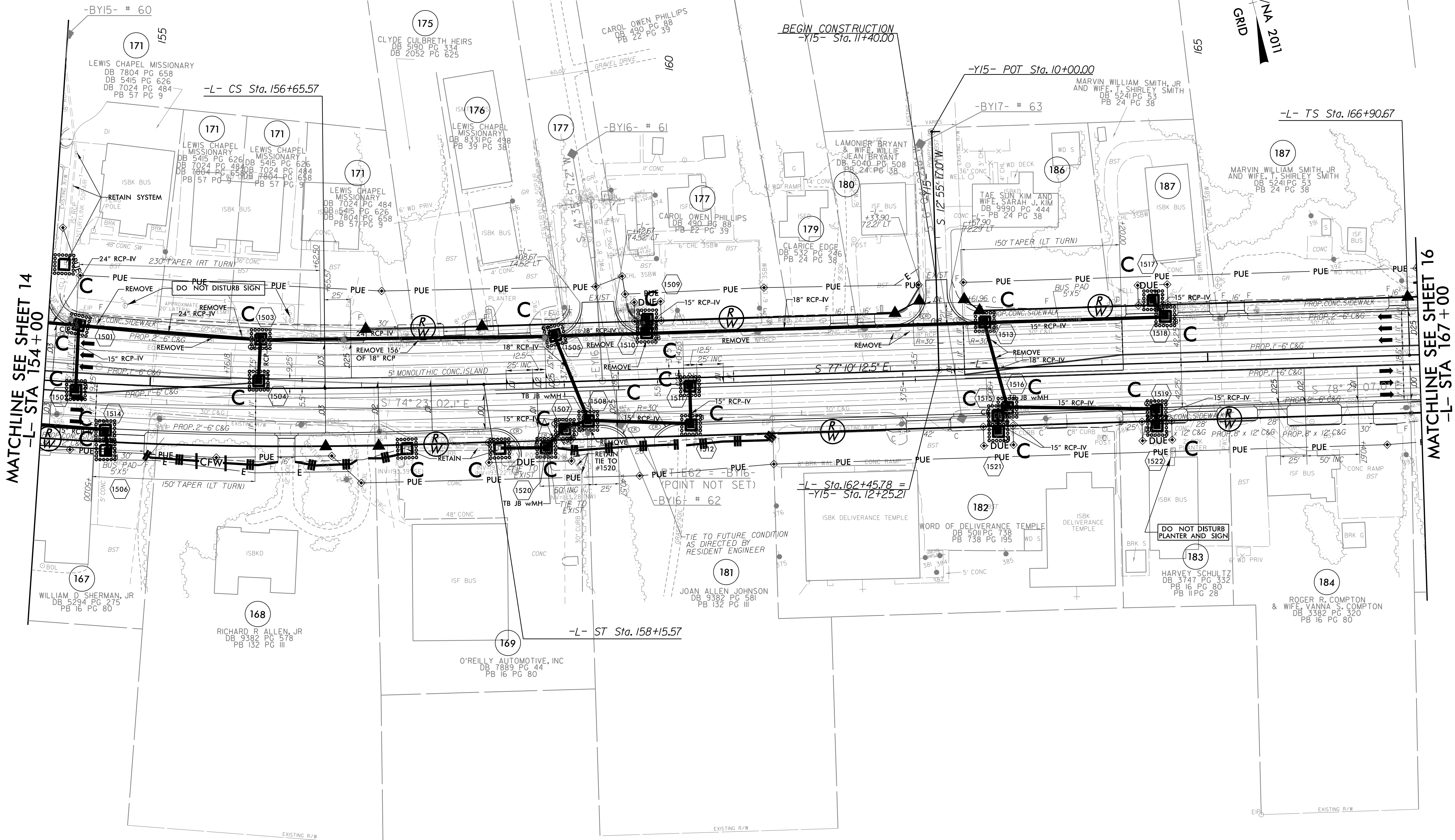


|                         |                     |
|-------------------------|---------------------|
| PROJECT REFERENCE NO.   | SHEET NO.           |
| U-4405B                 | EC-21/CONST.15      |
| RW SHEET NO.            |                     |
| ROADWAY DESIGN ENGINEER | HYDRAULICS ENGINEER |

| -L-                          |                           |                           |
|------------------------------|---------------------------|---------------------------|
| PI Sta 155+10.17             | Pls Sta 157+15.57         | Pls Sta 167+90.68         |
| $\Delta = 5' 10" 21.2" (LT)$ | $\Theta_s = 1' 14" 50.5"$ | $\Theta_s = 2' 14" 59.4"$ |
| $D = 1' 39" 47.4"$           | $L_s = 150.00'$           | $L_s = 150.00'$           |
| $L = 311.0'$                 | $LT = 100.00'$            | $LT = 100.0'$             |
| $T = 155.6'$                 | $ST = 50.00'$             | $ST = 50.0'$              |
| $R = 3,445.00'$              |                           |                           |
| $SE = 0.03$                  |                           |                           |

INSTALL FABRIC INSERT INLET PROTECTION DEVICE IN LIEU OF ROCK INLET SEDIMENT TRAP TYPE 'C' AS DIRECTED TO AVOID PONDING OF RUNOFF IN ROADWAY OPEN TO PUBLIC TRAFFIC



PROP CONC SIDEWALK  
 \*\* A DESIGN EXCEPTION FOR LANE WIDTH IS REQUIRED FOR -L- STA. 38+95.00 TO -L- 319+95.00

NOTE: SEE SHEET 38 FOR -L- PROFILE  
 SEE SHEET 48 FOR -Y15- PROFILE

REVISIONS

8/17/99  
 10/8/2024  
 U:\4405B\_REU\_EC\_psh\_15\_Final.dgn