

PROJECT REFERENCE NO.	SHEET NO.
U-4405B	EC-14/CONST.20
RW SHEET NO.	
ROADWAY DESIGN ENGINEER	HYDRAULICS ENGINEER

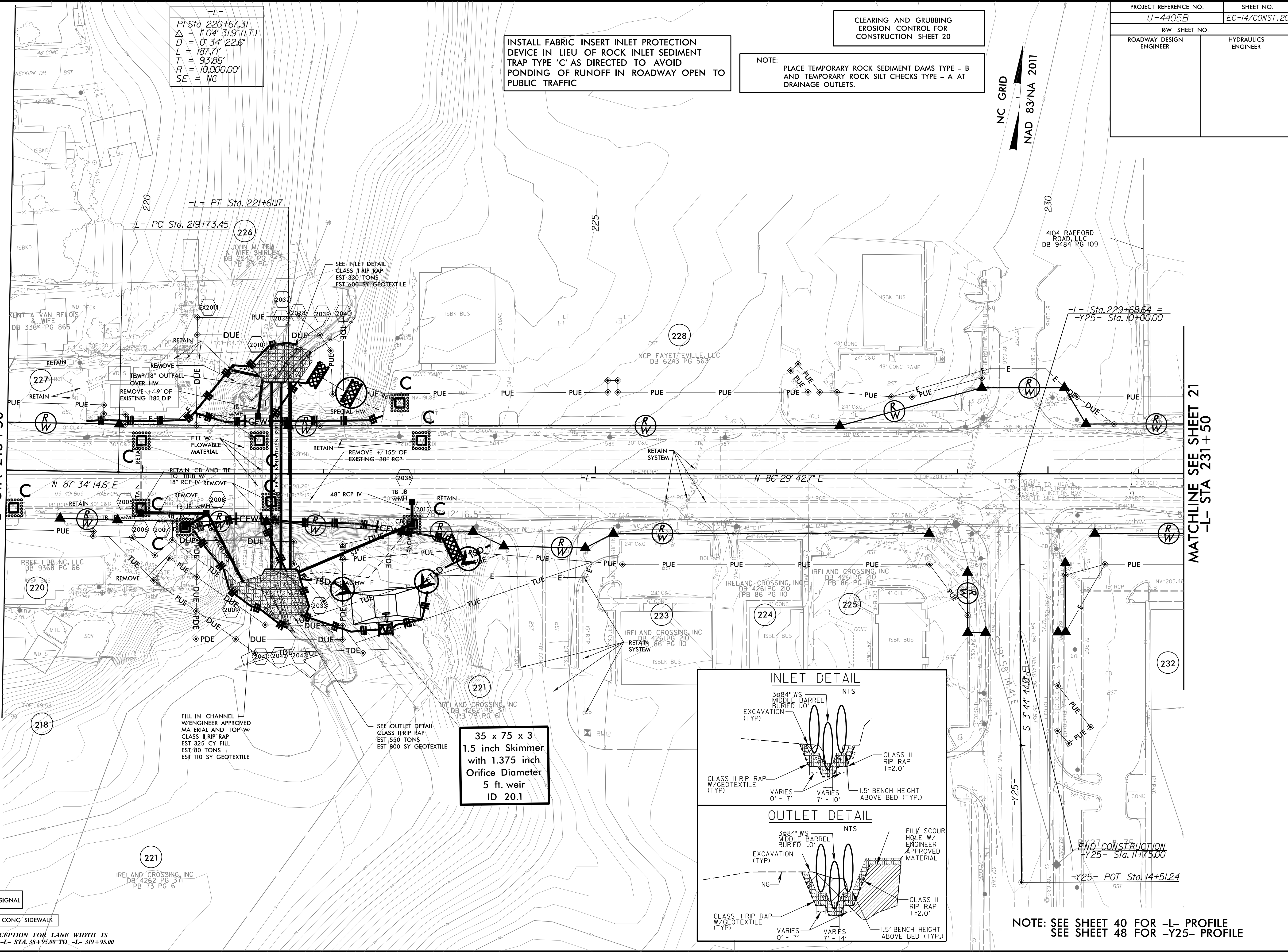
CLEARING AND GRUBBING  
EROSION CONTROL FOR  
CONSTRUCTION SHEET 20

INSTALL FABRIC INSERT INLET PROTECTION  
DEVICE IN LIEU OF ROCK INLET SEDIMENT  
TRAP TYPE 'C' AS DIRECTED TO AVOID  
PONDING OF RUNOFF IN ROADWAY OPEN TO  
PUBLIC TRAFFIC

NOTE:  
PLACE TEMPORARY ROCK SEDIMENT DAMS TYPE - B  
AND TEMPORARY ROCK SILT CHECKS TYPE - A AT  
DRAINAGE OUTLETS.

NC GRID  
NAD 83/NA 2011

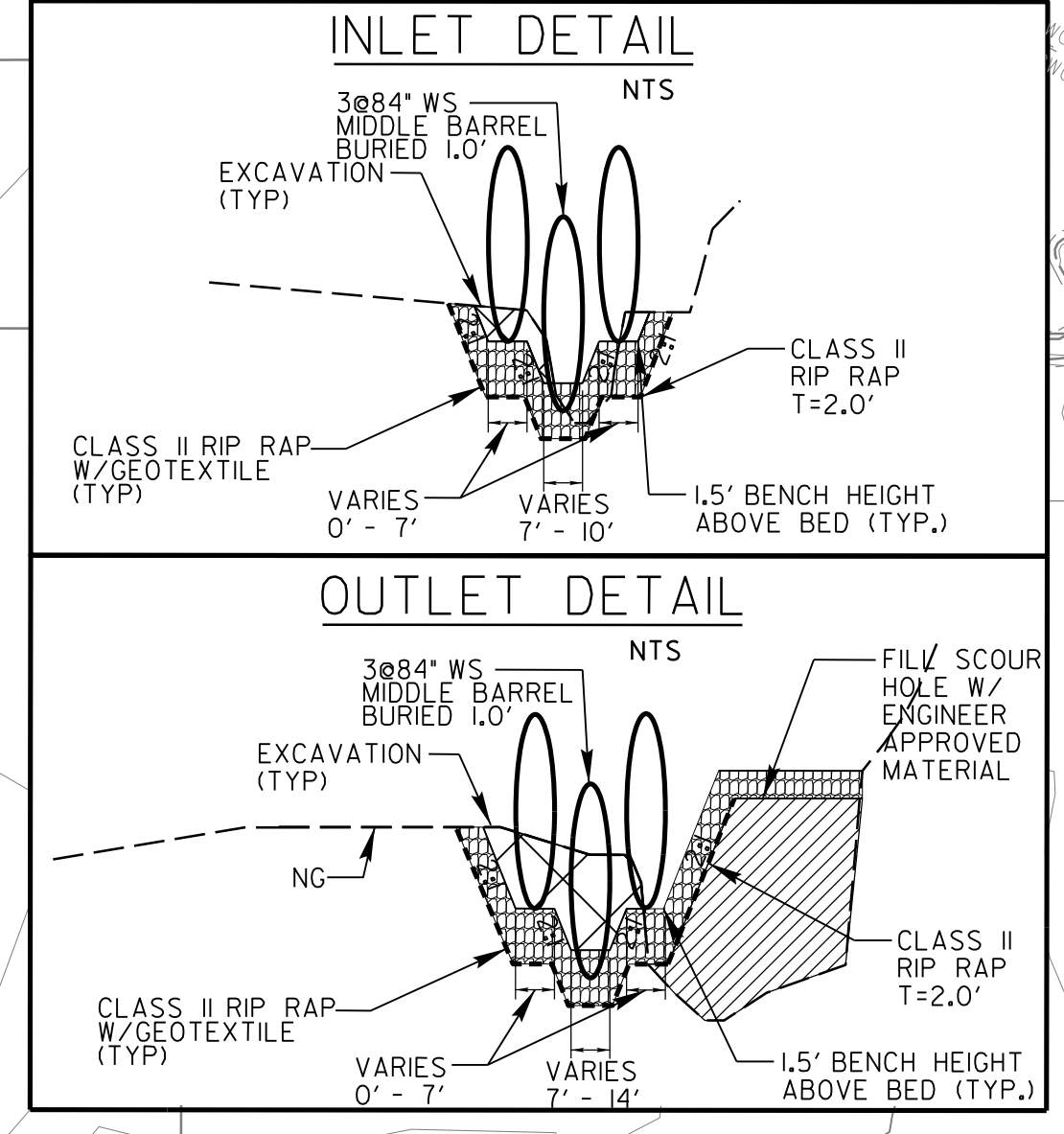
-L-  
PI Sta. 220+67.31  
 $\Delta = 1^{\circ}04'31.9"$  (LT)  
 $D = 0^{\circ}34'22.6"$   
 $L = 187.71'$   
 $T = 93.86'$   
 $R = 10,000.00'$   
 $SE = NC$



MATCHLINE SEE SHEET 19  
-L- STA 218+50

MATCHLINE SEE SHEET 21  
-L- STA 231+50

35 x 75 x 3  
1.5 inch Skimmer  
with 1.375 inch  
Orifice Diameter  
5 ft. weir  
ID 20.1



END CONSTRUCTION  
-Y25- Sta. 11+75.00

NOTE: SEE SHEET 40 FOR -L- PROFILE  
SEE SHEET 48 FOR -Y25- PROFILE

- ★ PROPOSED SIGNAL
- ▬ PROP CONC/ SIDEWALK

\*\* A DESIGN EXCEPTION FOR LANE WIDTH IS  
REQUIRED FOR -L- STA. 38+95.00 TO -L- 319+95.00

REVISIONS

10/8/2024 10:44:05\_REU\_EC\_psh\_20\_CG.dgn 8/17/99