

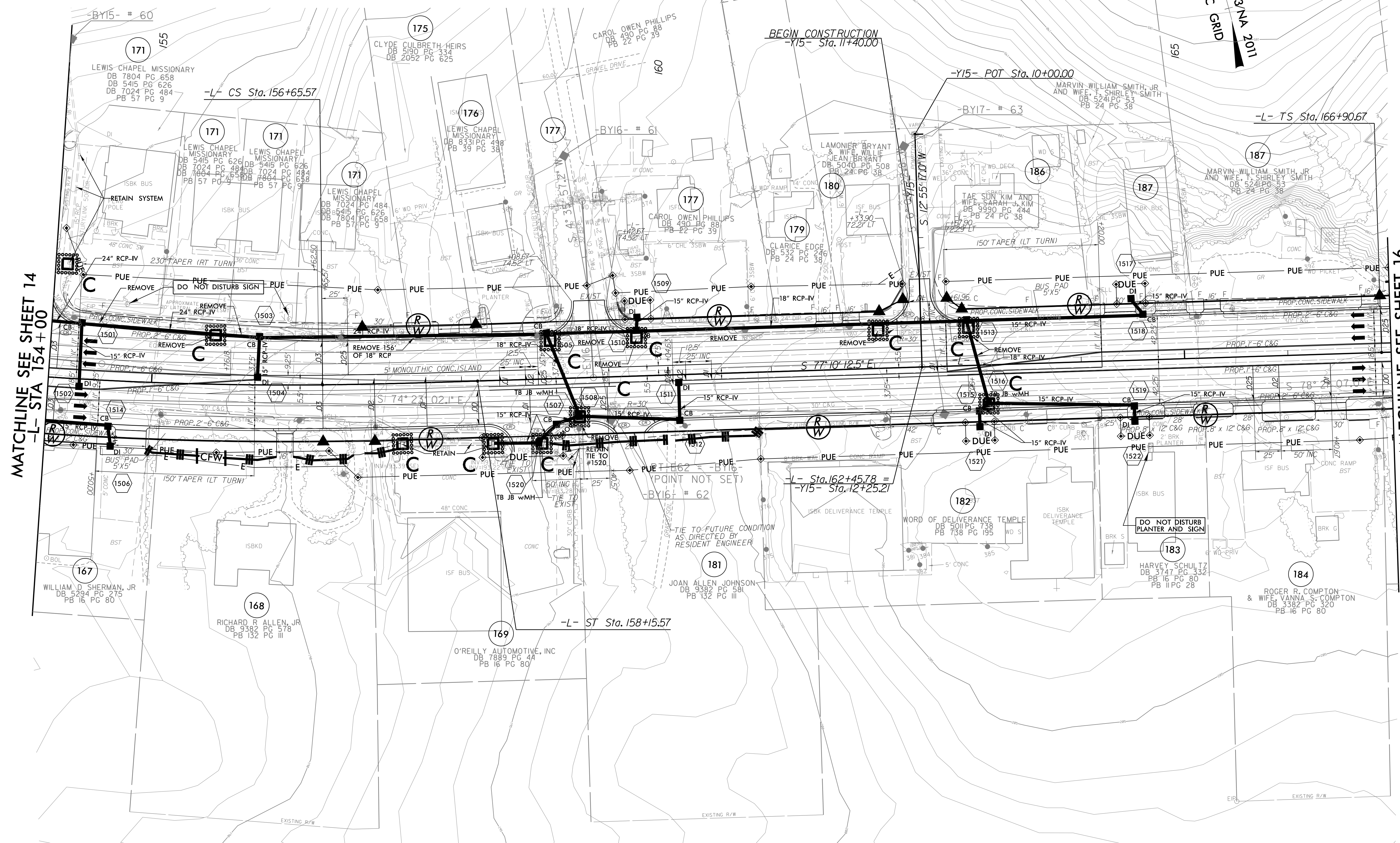
PROJECT REFERENCE NO.	SHEET NO.
U-4405B	EC-10/CONST.15
RW SHEET NO.	
ROADWAY DESIGN ENGINEER	HYDRAULICS ENGINEER

CLEARING AND GRUBBING EROSION CONTROL FOR CONSTRUCTION SHEET 15

NOTE: PLACE TEMPORARY ROCK SEDIMENT DAMS TYPE - B AND TEMPORARY ROCK SILT CHECKS TYPE - A AT DRAINAGE OUTLETS.

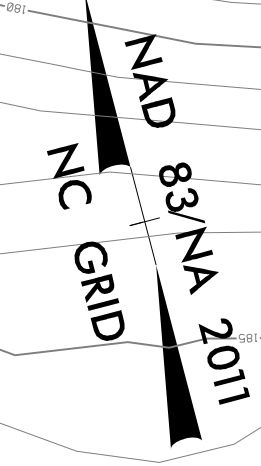
INSTALL FABRIC INSERT INLET PROTECTION DEVICE IN LIEU OF ROCK INLET SEDIMENT TRAP TYPE 'C' AS DIRECTED TO AVOID PONDING OF RUNOFF IN ROADWAY OPEN TO PUBLIC TRAFFIC

PI Sta 155+10.17 Δ = 5'10" 21.2" (LT) D = 1'39" 47.4" L = 311.0' T = 155.6' R = 3,445.00' SE = 0.03	Pls Sta 157+15.57 Os = 1'14" 50.5" Ls = 150.00' LT = 100.00' ST = 50.00'	Pls Sta 167+90.68 Os = 2'14" 59.4" Ls = 150.00' LT = 100.00' ST = 50.00'
---	--	--



MATCHLINE SEE SHEET 14
-L- STA 154+00

MATCHLINE SEE SHEET 16
-L- STA 167+00



PROP CONC SIDEWALK
** A DESIGN EXCEPTION FOR LANE WIDTH IS REQUIRED FOR -L- STA. 38+95.00 TO -L- 319+95.00

NOTE: SEE SHEET 38 FOR -L- PROFILE
SEE SHEET 48 FOR -Y15- PROFILE

REVISIONS

10/8/2024 10:44:05_REU_EC_psh_15_CG.dgn 8/17/99