

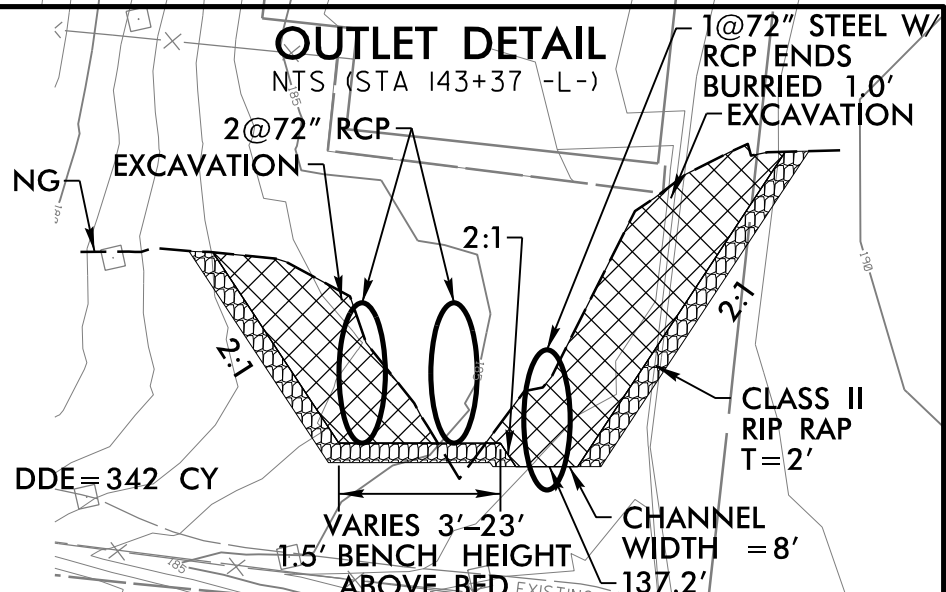
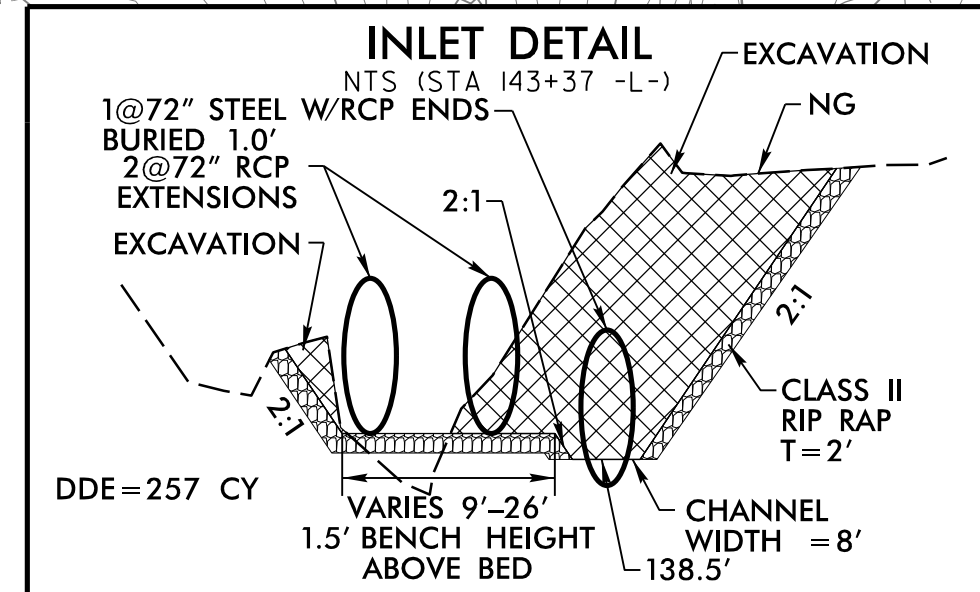
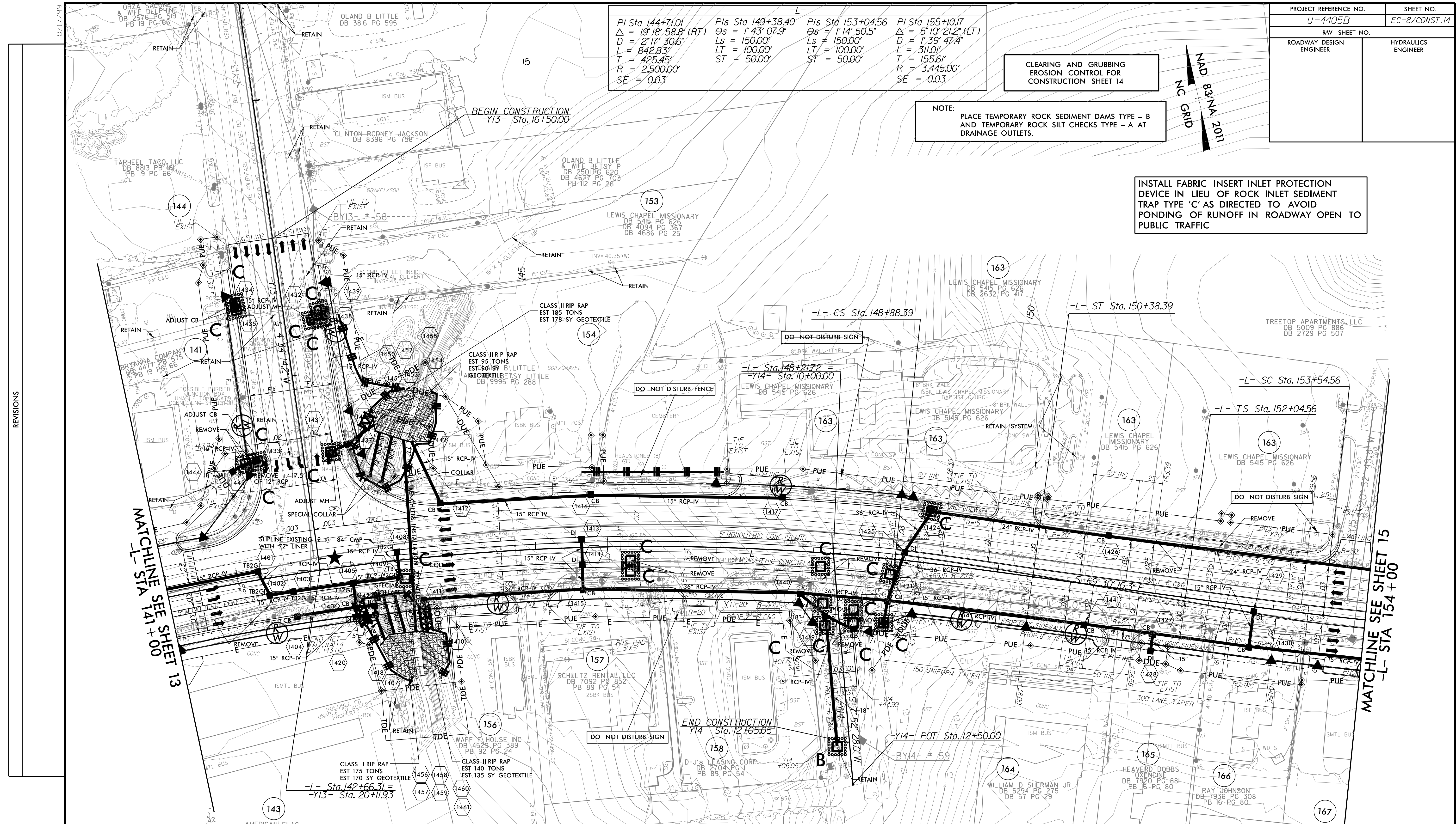
PROJECT REFERENCE NO.	SHEET NO.
U-4405B	EC-8/CONST.14
RW SHEET NO.	
ROADWAY DESIGN ENGINEER	HYDRAULICS ENGINEER

PI Sta 144+71.01 $\Delta = 19' 18" 58.8" (RT)$ $D = 2' 17" 30.6"$ $L = 842.83'$ $T = 425.45'$ $R = 2,500.00'$ $SE = 0.03$	Pls Sta 149+38.40 $\Theta_s = 1' 43" 07.9"$ $Ls = 150.00'$ $LT = 100.00'$ $ST = 50.00'$	Pls Sta 153+04.56 $\Theta_s = 1' 14" 50.5"$ $Ls = 150.00'$ $LT = 100.00'$ $ST = 50.00'$	PI Sta 155+10.17 $\Delta = 5' 10" 21.2" (LT)$ $D = 1' 39" 47.4"$ $L = 311.01'$ $T = 155.61'$ $R = 3,445.00'$ $SE = 0.03$
---	---	---	--

CLEARING AND GRUBBING
EROSION CONTROL FOR
CONSTRUCTION SHEET 14

NOTE:
PLACE TEMPORARY ROCK SEDIMENT DAMS TYPE - B
AND TEMPORARY ROCK SILT CHECKS TYPE - A AT
DRAINAGE OUTLETS.

INSTALL FABRIC INSERT INLET PROTECTION
DEVICE IN LIEU OF ROCK INLET SEDIMENT
TRAP TYPE 'C' AS DIRECTED TO AVOID
PONDING OF RUNOFF IN ROADWAY OPEN TO
PUBLIC TRAFFIC



NOTE: SEE SHEET 37 & 38 FOR -L- PROFILE
SEE SHEET 47 FOR -Y13- PROFILE
SEE SHEET 48 FOR -Y14- PROFILE

REVISIONS

MATCHLINE SEE SHEET 13
-L- STA 141+00

MATCHLINE SEE SHEET 15
-L- STA 154+00

★ PROPOSED SIGNAL
— PROP CONC SIDEWALK
** A DESIGN EXCEPTION FOR LANE WIDTH IS
REQUIRED FOR -L- STA. 38+95.00 TO -L- 319+95.00

10/8/2024
14405_REU_EC_psh_14_CG.dgn