

NOTES

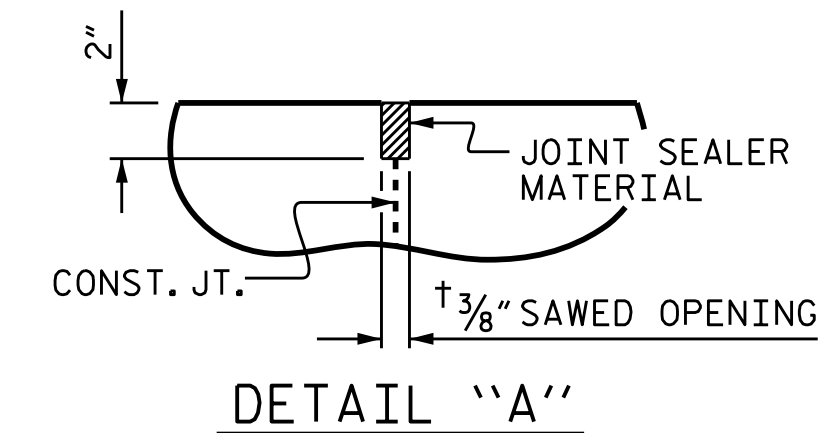
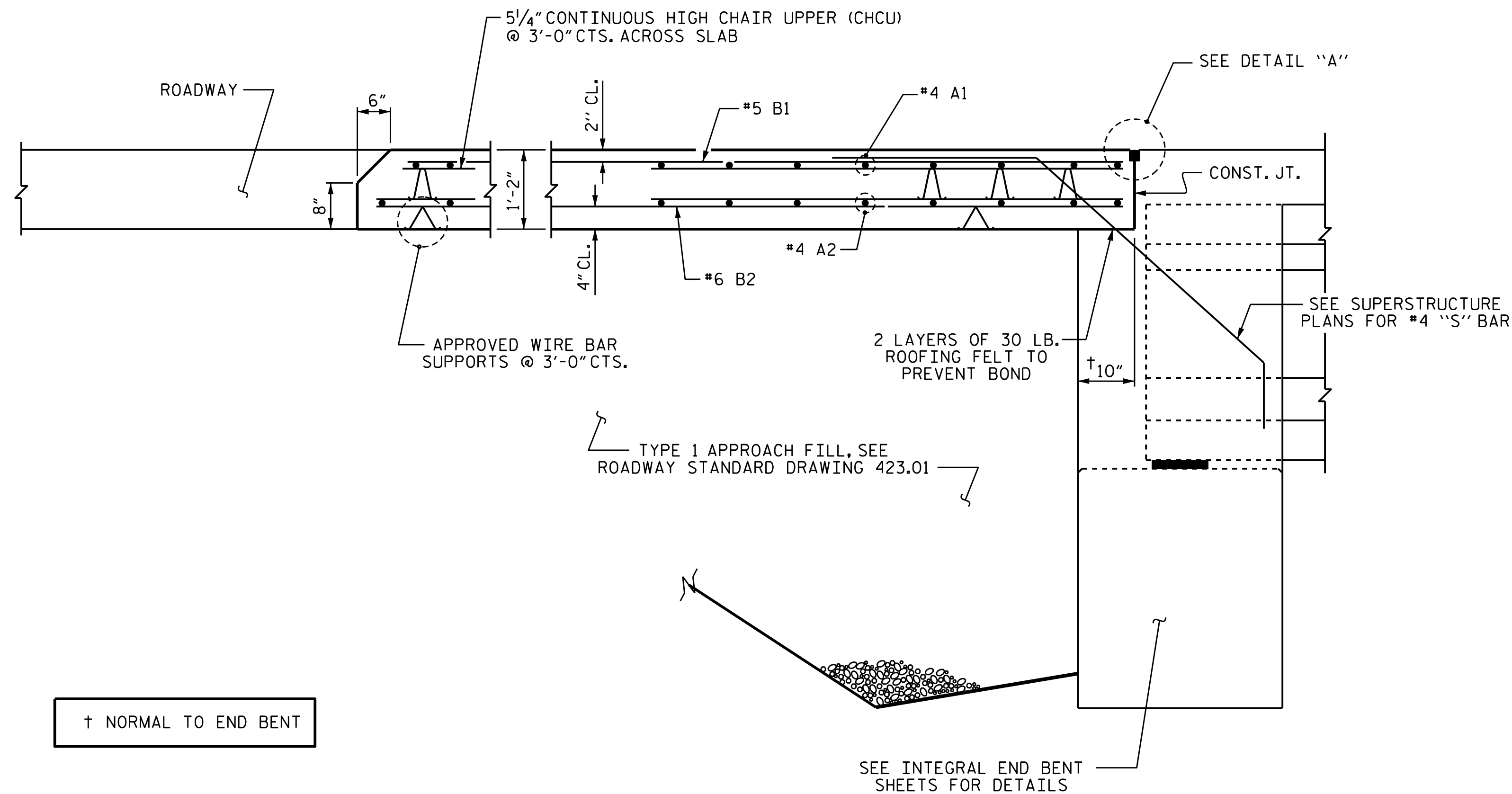
FOR BRIDGE APPROACH FILL, SEE ROADWAY PLANS.

APPROACH SLAB SHALL NOT BE CONSTRUCTED PRIOR TO COMPLETION OF THE BRIDGE DECK.

AREA BETWEEN THE WINGWALL AND APPROACH SLAB SHALL BE GRADED TO DRAIN THE WATER AWAY FROM THE FILL FACE OF THE BRIDGE AND SHALL BE PAVED. SEE ROADWAY PLANS.

THE JOINT OPENING AT THE APPROACH SLAB/DECK INTERFACE SHALL BE SAWED NO MORE THAN 12 HOURS AFTER THE APPROACH SLAB IS CAST. THE JOINT SHALL BE CLEANED OF ALL DEBRIS BEFORE THE SEALANT IS APPLIED. THE JOINT SEALER MATERIAL SHALL CONFORM TO THE REQUIREMENTS OF SECTION 1028-3 OF THE STANDARD SPECIFICATIONS.

AT THE CONTRACTORS OPTION "TYPE 1A - ALTERNATE APPROACH FILL" (ROADWAY STD. 423.02) MAY BE CONSTRUCTED AT NO ADDITIONAL COST TO THE DEPARTMENT IN LIEU OF "TYPE 1 - APPROACH FILL".

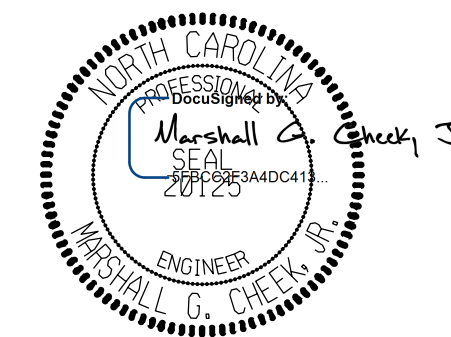


SECTION THRU SLAB

† NORMAL TO END BENT

PROJECT NO. B-5845
CLEVELAND COUNTY
 STATION: 22+56.00-L-

SHEET 2 OF 2



STATE OF NORTH CAROLINA
 DEPARTMENT OF TRANSPORTATION
 RALEIGH
 STANDARD
 BRIDGE APPROACH
 SLAB DETAILS

ASSEMBLED BY :	JLA	DATE :	4/22
CHECKED BY :	MGC	DATE :	5/22
DRAWN BY :	TLA	REV. 12/17	MAA/GM
CHECKED BY :	GM	REV. 6/19	BNB/THC
		REV. 7/23	BNB/SNM

DOCUMENT NOT CONSIDERED FINAL
 UNLESS ALL SIGNATURES COMPLETED

TGS ENGINEERS
 201 W. MARION ST STE 200
 SHELBY, NC 28150
 PH (704) 476-0003
 CORP. LICENSE NO.: C-0275

REVISIONS						SHEET NO.
NO.	BY:	DATE:	NO.	BY:	DATE:	S-40
1			3			TOTAL SHEETS
2			4			40