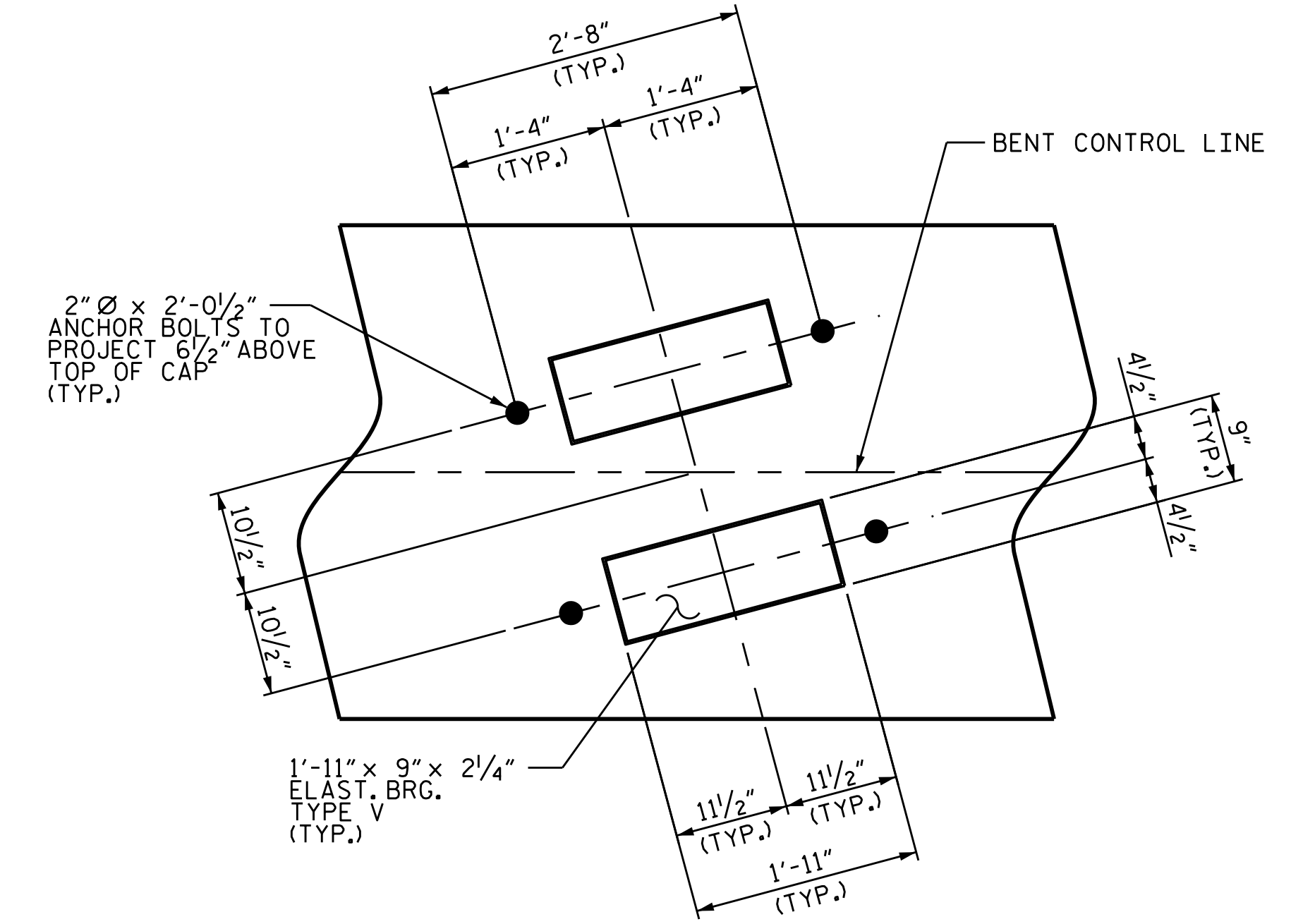
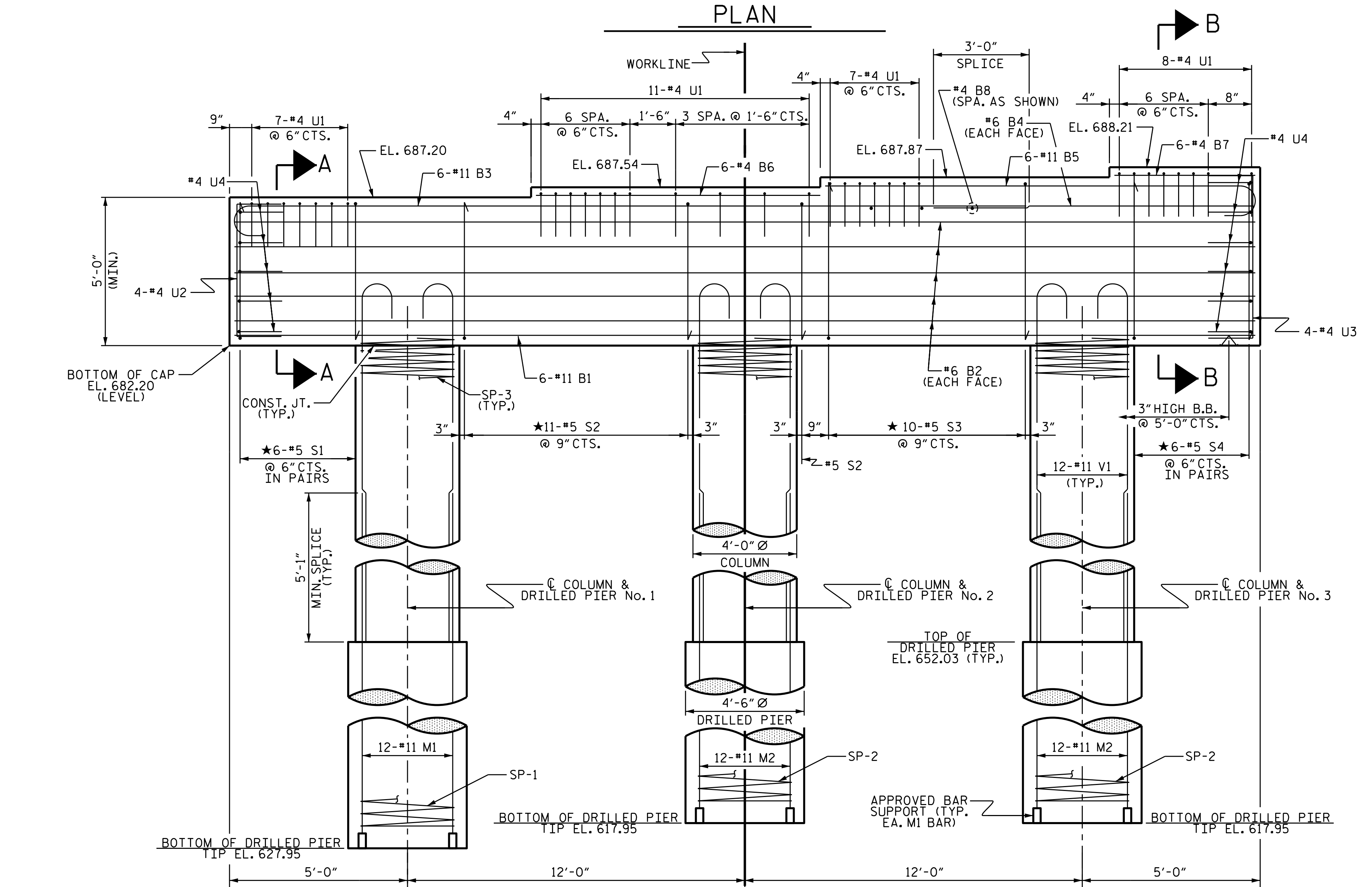
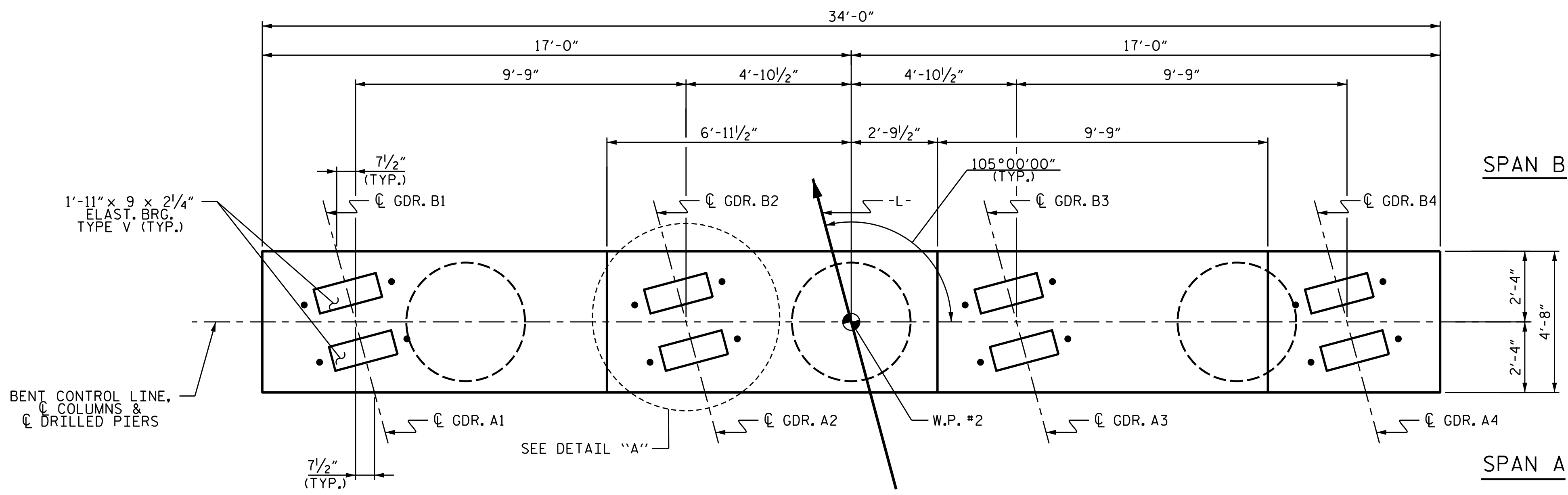


NOTES

- STIRRUPS IN CAP MAY BE SHIFTED AS NECESSARY TO CLEAR ANCHOR BOLTS.
- HOOKS ON "V" BARS MAY BE TURNED AS NECESSARY FOR PLACING REINFORCING STEEL.
- FOR DRILLED PIERS, SEE SECTION 411 OF THE STANDARD SPECIFICATIONS.
- ALL STEEL IN THE DRILLED PIERS IS INCLUDED IN THE PAY ITEMS FOR "REINFORCING STEEL" AND "SPIRAL COLUMN REINFORCING STEEL."
- ★ INVERT ALTERNATE STIRRUPS.
- DRILLED PIERS SHALL BE TERMINATED ONE FOOT ± ABOVE NORMAL WATER SURFACE ELEVATION FOR SHAFTS LOCATED IN WATER.
- THE CONTRACTOR'S ATTENTION IS CALLED TO THE FACT THAT THE LONGITUDINAL REINFORCEMENT FOR DRILLED PIERS IS DETAILED WITH 3 FEET OF EXTRA LENGTH.



DETAIL "A"
(DIMENSIONS ARE TYPICAL EACH BEARING)

PROJECT NO. B-5845
 CLEVELAND COUNTY
 STATION: 22+56.00 -L-
 SHEET 1 OF 2

STATE OF NORTH CAROLINA
 PROFESSIONAL ENGINEER
 Marshall G. Cheek, Jr.
 20123
 ENGINEER
 MARSHALL G. CHEEK, JR.
 6/27/2024

STATE OF NORTH CAROLINA		DEPARTMENT OF TRANSPORTATION		RALEIGH		SUBSTRUCTURE		BENT 1	
DOCUMENT NOT CONSIDERED FINAL UNLESS ALL SIGNATURES COMPLETED									
REVISIONS									
NO.	BY:	DATE:	NO.	BY:	DATE:	SHEET NO.			
1			3			S-32			
2			4			TOTAL SHEETS 40			

DRAWN BY : ZCS DATE : 12/22
 CHECKED BY : MGC DATE : 12/22
 DESIGN ENGINEER OF RECORD : ZCS DATE : 12/22

DIMENSIONS & REINFORCING STEEL ARE TYPICAL FOR EACH COLUMN & DRILLED PIER UNLESS OTHERWISE NOTED.