

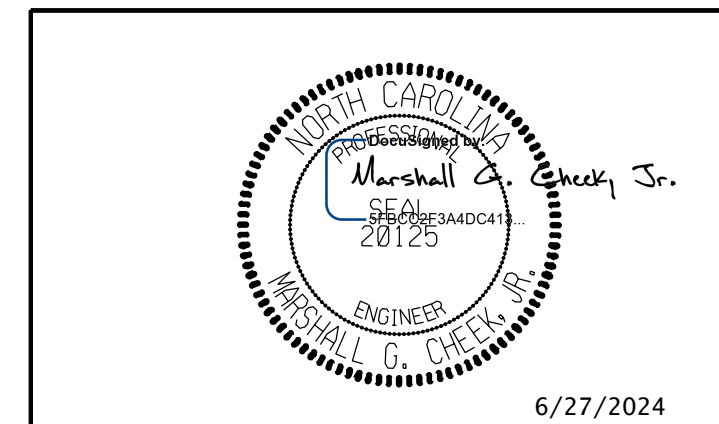
PLAN OF SPAN B

FOR ADDITIONAL REINFORCING STEEL IN CONCRETE PARAPET & END POST, SEE "1'-2" x 2'-6" CONCRETE PARAPET AND END POST DETAILS" SHEETS.

PROJECT NO. B-5845
CLEVELAND COUNTY

STATION: 22+56.00-L-

SHEET 2 OF 4



STATE OF NORTH CAROLINA
 DEPARTMENT OF TRANSPORTATION
 RALEIGH
 SUPERSTRUCTURE
 PLAN OF SPAN B

DRAWN BY : JLA DATE : 4/22
 CHECKED BY : MGC DATE : 4/22
 DESIGN ENGINEER OF RECORD : MGC DATE : 8/22

DOCUMENT NOT CONSIDERED FINAL
 UNLESS ALL SIGNATURES COMPLETED

TGS ENGINEERS
 201 W. MARION ST STE 200
 SHELBY, NC 28150
 PH (704) 476-0003
 CORP. LICENSE NO.: C-0275

REVISIONS						SHEET NO.
NO.	BY:	DATE:	NO.	BY:	DATE:	S-12
1			3			TOTAL SHEETS
2			4			40