

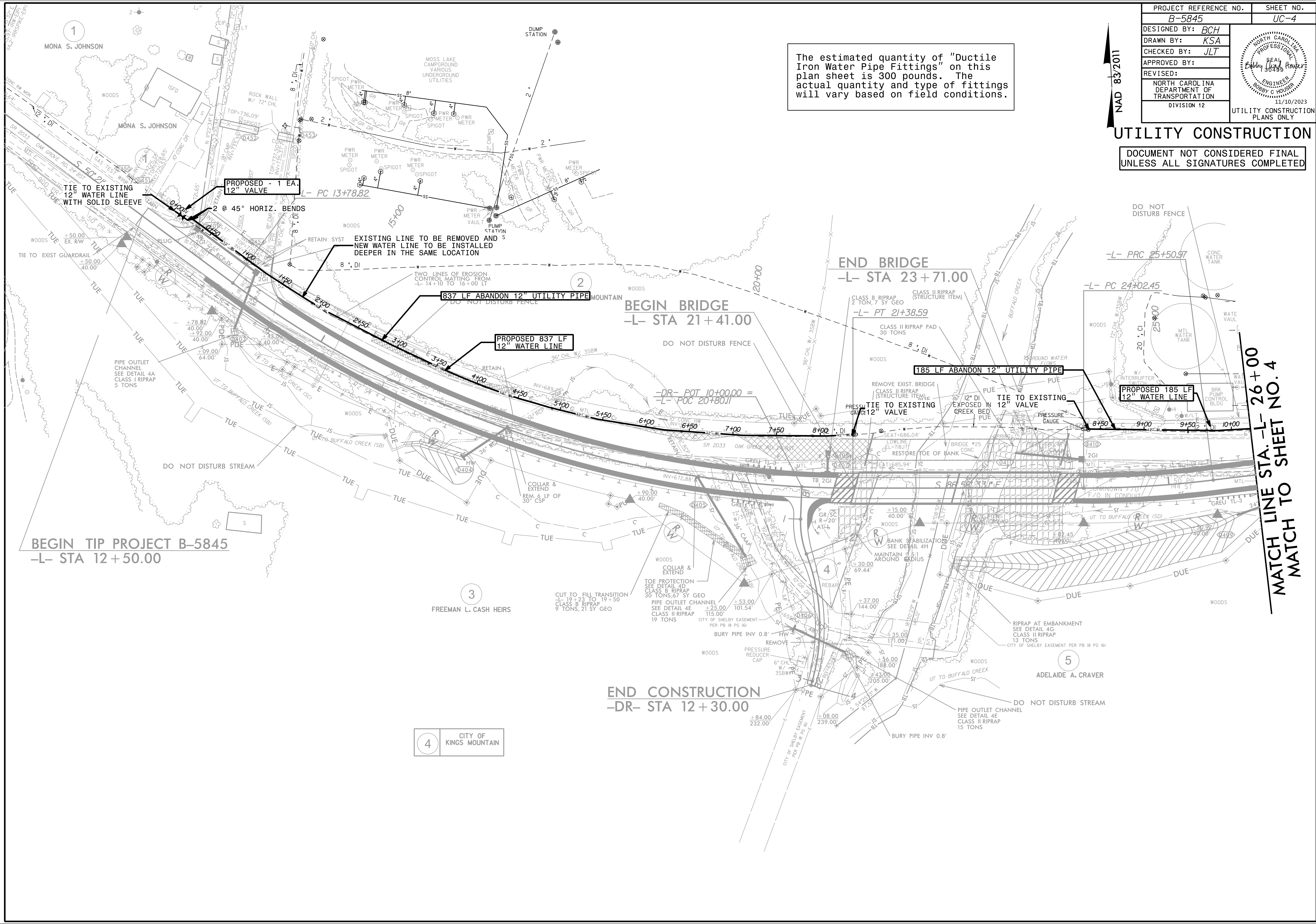
PROJECT REFERENCE NO. B-5845	SHEET NO. UC-4
DESIGNED BY: BCH	
DRAWN BY: KSA	
CHECKED BY: JLT	
APPROVED BY:	
REVISED:	
NORTH CAROLINA DEPARTMENT OF TRANSPORTATION DIVISION 12 UTILITY CONSTRUCTION PLANS ONLY	

NAD 83/2011

The estimated quantity of "Ductile Iron Water Pipe Fittings" on this plan sheet is 300 pounds. The actual quantity and type of fittings will vary based on field conditions.

UTILITY CONSTRUCTION

DOCUMENT NOT CONSIDERED FINAL
UNLESS ALL SIGNATURES COMPLETED



MATCH LINE STA. -L- 26+00
MATCH TO SHEET NO. 4

4 CITY OF KINGS MOUNTAIN

5 ADELAIDE A. CRAVER