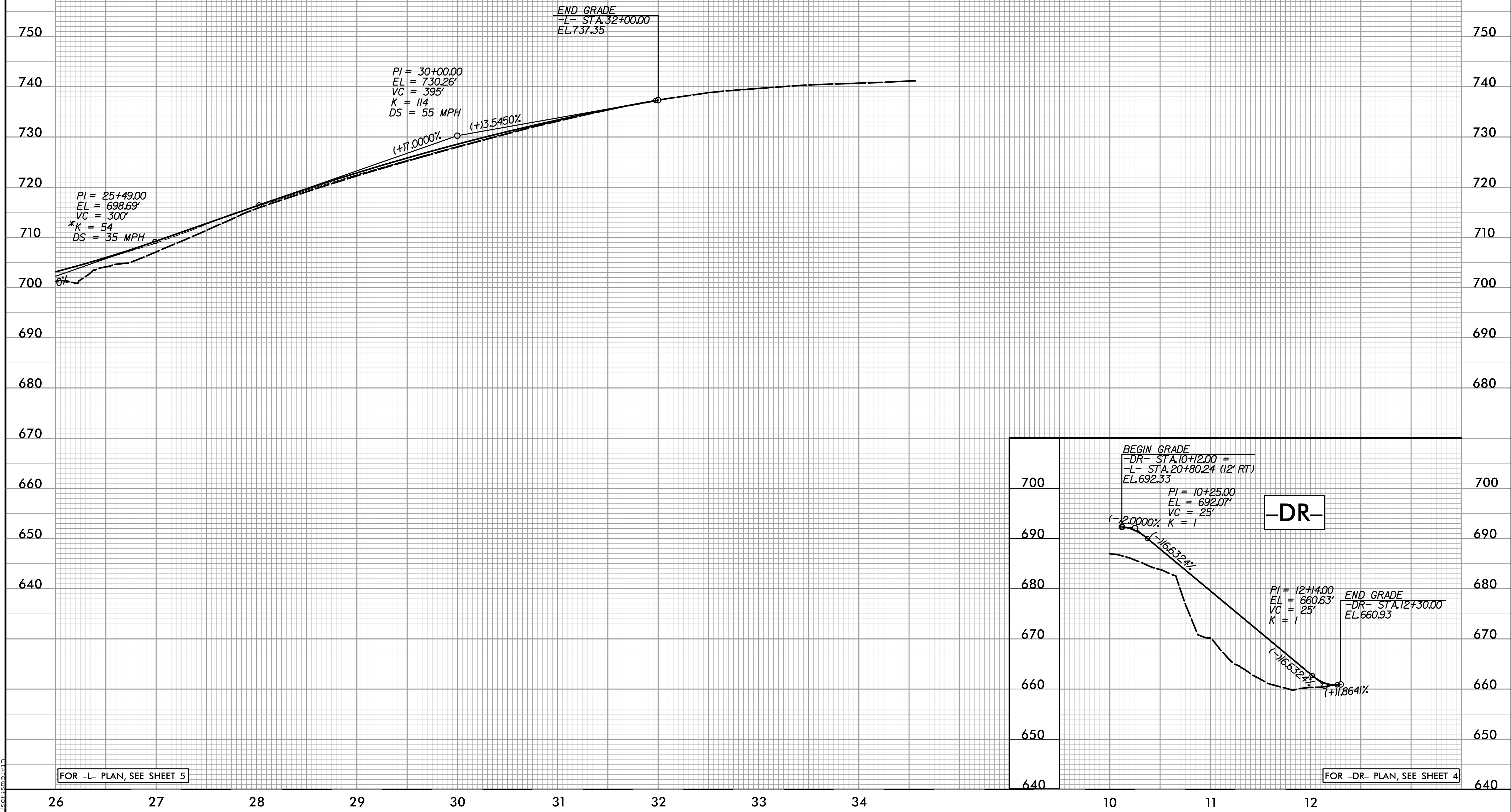


5/14/99

*DESIGN EXCEPTION REQUIRED FOR VERTICAL CURVATURE AND VERTICAL SSD.

-L-

PROJECT REFERENCE NO. B-5845	SHEET NO. 7
ROADWAY DESIGN ENGINEER JIMMY L. TERRY 35018 6/25/2024	HYDRAULICS ENGINEER DAVID B. PETTY 038697 6/25/2024
DOCUMENT NOT CONSIDERED FINAL UNLESS ALL SIGNATURES COMPLETED	



FOR -L- PLAN, SEE SHEET 5

FOR -DR- PLAN, SEE SHEET 4

K:\14\2023\B-5845 - Cleveland 25\Roadway\Proj\B-5845_Rdu.pfl.dgn