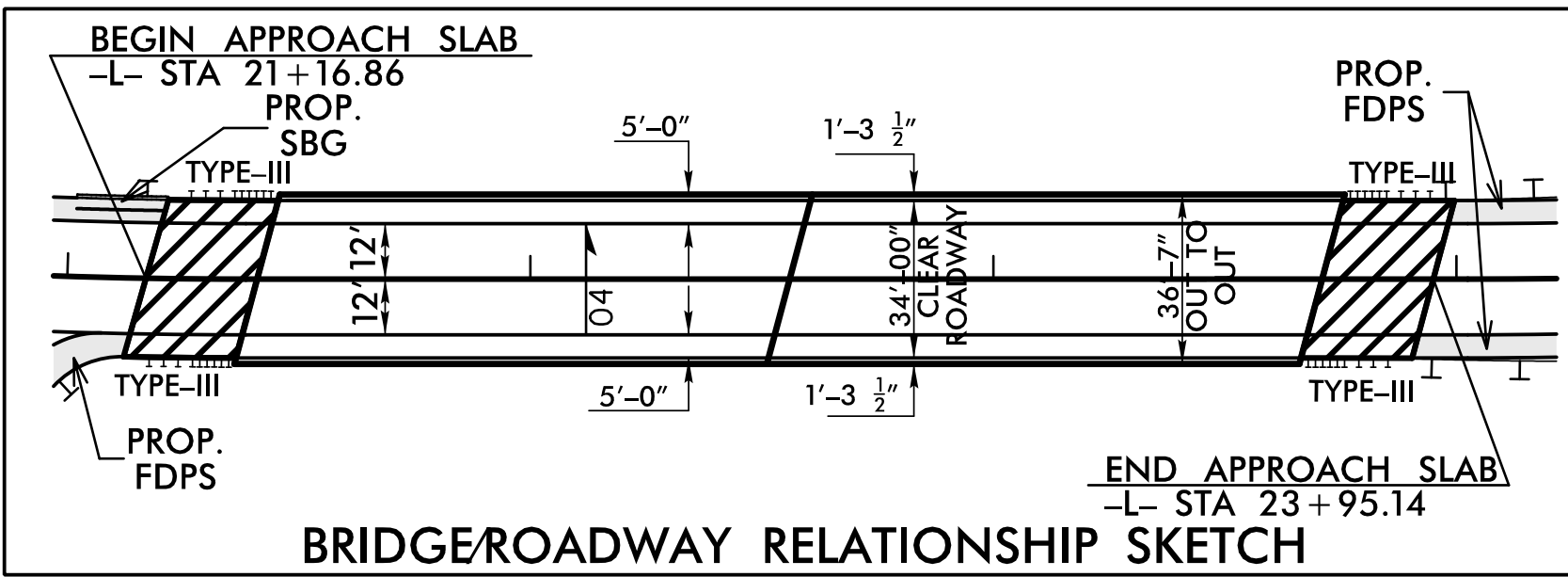


PROJECT REFERENCE NO. <b>B-5845</b>	SHEET NO. <b>4</b>
ROADWAY DESIGN ENGINEER <b>JIMMY L. TERRY</b> NORTH CAROLINA PROFESSIONAL ENGINEER 35018	HYDRAULICS ENGINEER <b>DAVID B. PETTY</b> NORTH CAROLINA PROFESSIONAL ENGINEER 83869

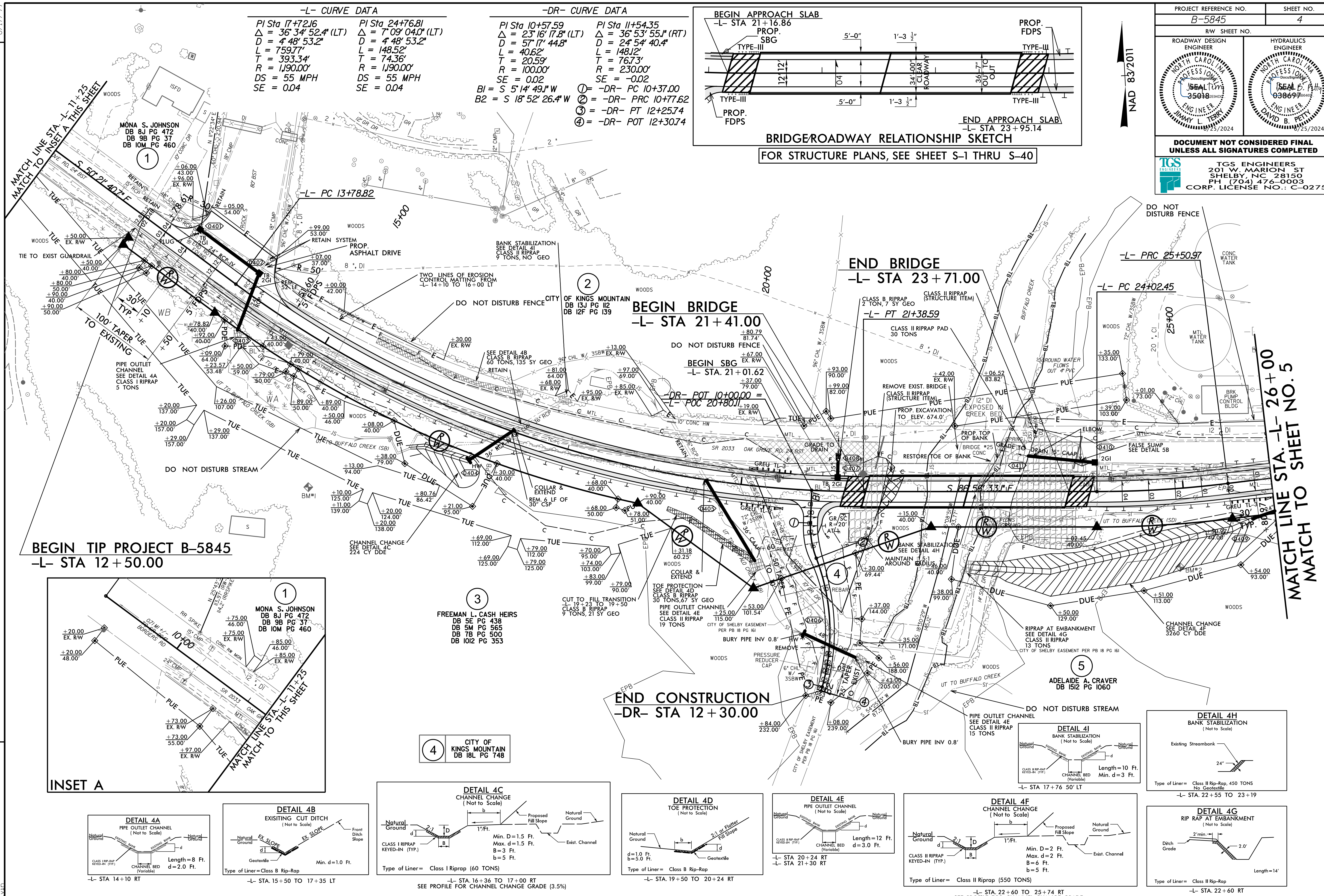
DATE: 07/25/2024

**DOCUMENT NOT CONSIDERED FINAL UNLESS ALL SIGNATURES COMPLETED**

TGS ENGINEERS  
201 W. MARION ST  
SHELBY, NC 28150  
PH (704) 476-0003  
CORP. LICENSE NO.: C-0275



-L- CURVE DATA		-DR- CURVE DATA	
PI Sta 17+72.16	PI Sta 24+76.81	PI Sta 10+57.59	PI Sta 11+54.35
$\Delta = 36^\circ 34' 52.4''$ (LT)	$\Delta = 7^\circ 09' 04.0''$ (LT)	$\Delta = 23^\circ 16' 17.8''$ (LT)	$\Delta = 36^\circ 53' 55.1''$ (RT)
$D = 4^\circ 48' 53.2''$	$D = 4^\circ 48' 53.2''$	$D = 57^\circ 17' 44.8''$	$D = 24^\circ 54' 40.4''$
$L = 759.77'$	$L = 148.52'$	$L = 40.62'$	$L = 148.12'$
$T = 393.34'$	$T = 74.36'$	$T = 20.59'$	$T = 76.73'$
$R = 1,190.00'$	$R = 1,190.00'$	$R = 100.00'$	$R = 230.00'$
$DS = 55$ MPH	$DS = 55$ MPH	$SE = 0.02$	$SE = -0.02$
$SE = 0.04$	$SE = 0.04$	$B1 = S 5^\circ 14' 49.1'' W$	① -DR- PC 10+37.00
		$B2 = S 18^\circ 52' 26.4'' W$	② -DR- PRC 10+77.62
			③ -DR- PT 12+25.74
			④ -DR- POT 12+30.74



—EPB— ENDANGERED PLANT BOUNDARY

▨ PAVEMENT REMOVAL

ALL DRIVE RADII ARE 20' UNLESS OTHERWISE NOTED

SEE SHEET 6 FOR -L- GRADE

SEE SHEET 7 FOR -DR- GRADE

REVISIONS

8/17/99

V:\2003\B-5845 - Cleveland\_25\Roadway\Proj\B-5845\_Rdu\_psh\_04.dgn

MATCH LINE STA. -L- 26+00  
MATCH TO SHEET NO. 5

MONA S. JOHNSON  
DB 8J PG 472  
DB 9B PG 37  
DB 10M PG 460

FREEMAN L. CASH HEIRS  
DB 5E PG 438  
DB 5M PG 565  
DB 7B PG 500  
DB 10I2 PG 353

CITY OF KINGS MOUNTAIN  
DB 18L PG 748

ADELAIDE A. CRAVER  
DB 15I2 PG 1060

