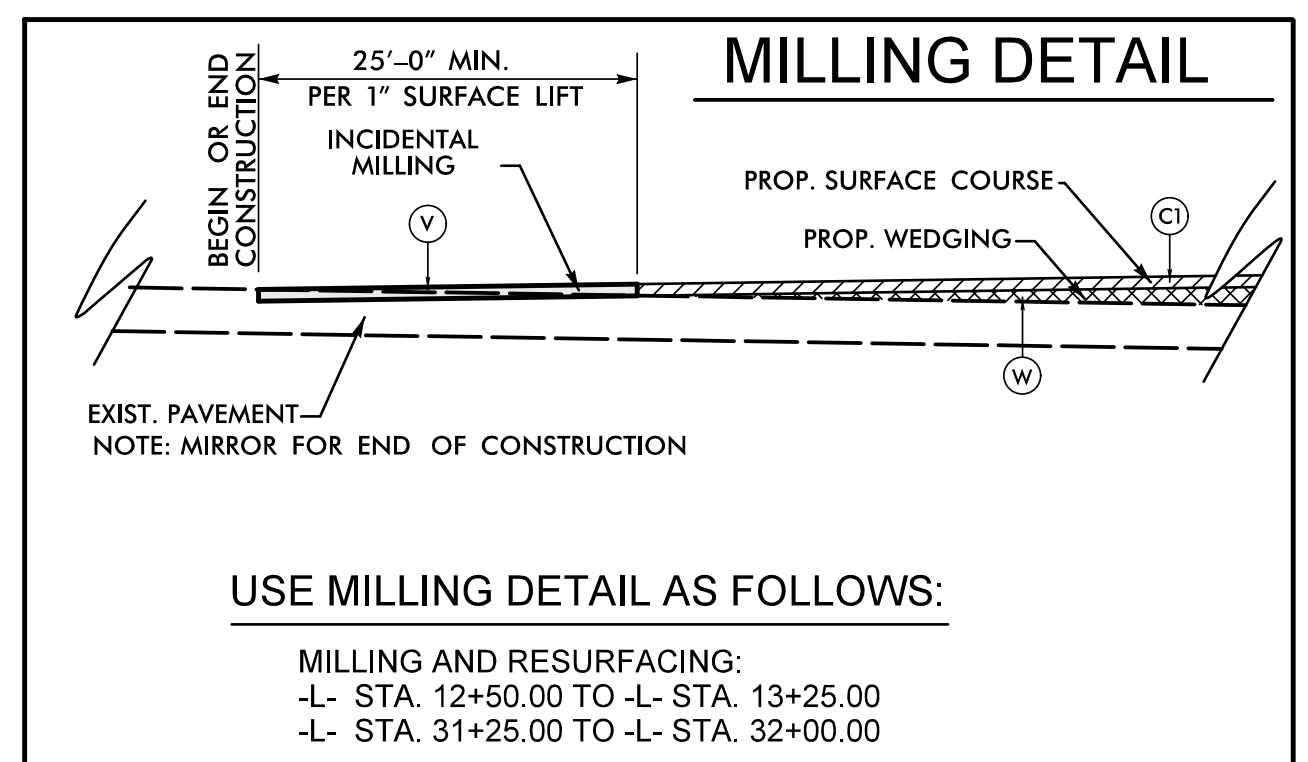
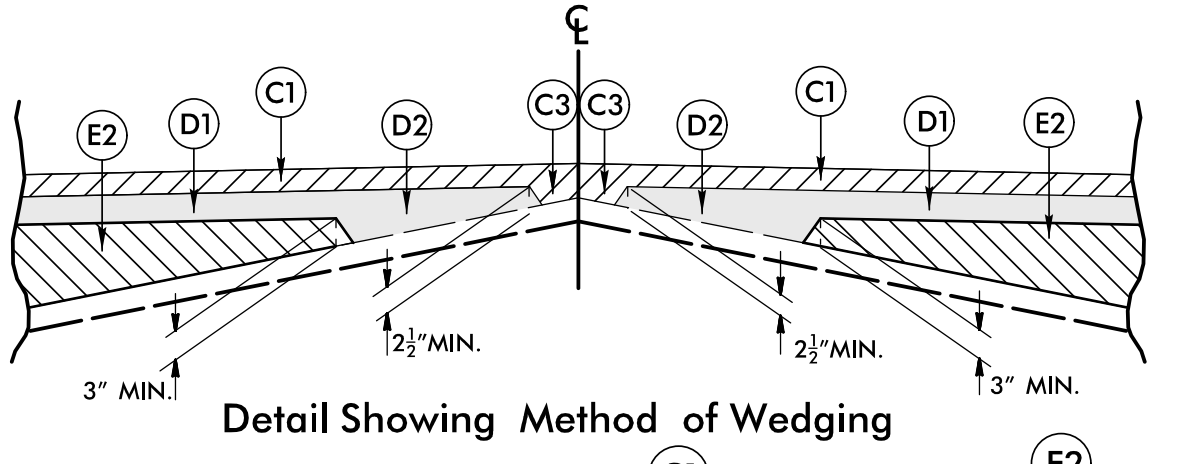


6/2/2024

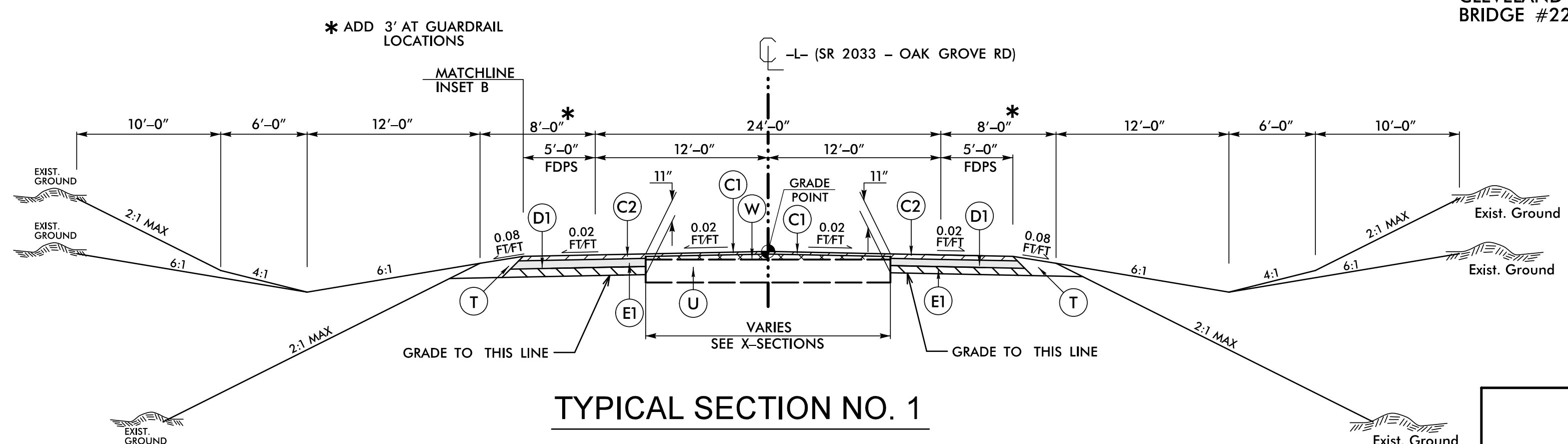
PAVEMENT SCHEDULE

C1	PROP. APPROX. 1 1/2" ASPHALT CONCRETE SURFACE COURSE, TYPE S9.5C, AT AN AVERAGE RATE OF 168 LBS. PER SQ. YD. IN EACH OF TWO LAYERS.
C2	PROP. APPROX. 3" ASPHALT CONCRETE SURFACE COURSE, TYPE S9.5C, AT AN AVERAGE RATE OF 168 LBS. PER SQ. YD. IN EACH OF TWO LAYERS.
C3	PROP. VAR. DEPTH ASPHALT CONCRETE SURFACE COURSE, TYPE S9.5C, AT AN AVERAGE RATE OF 112 LBS. PER SQ. YD. PER 1" DEPTH. TO BE PLACED IN LAYERS NOT TO EXCEED 1 1/2" IN DEPTH.
D1	PROP. APPROX. 4" ASPHALT CONCRETE INTERMEDIATE COURSE, TYPE I19.0C, AT AN AVERAGE RATE OF 456 LBS. PER SQ. YD.
D2	PROP. VAR. DEPTH ASPHALT CONCRETE INTERMEDIATE COURSE, TYPE I19.0C, AT AN AVERAGE RATE OF 114 LBS. PER SQ. YD. PER 1" DEPTH, TO BE PLACED IN LAYERS NOT LESS THAN 2 1/2" IN DEPTH OR GREATER THAN 4" IN DEPTH.
E1	PROP. APPROX. 4" ASPHALT CONCRETE BASE COURSE, TYPE B25.0C, AT AN AVERAGE RATE OF 456 LBS. PER SQ. YD.
E2	PROP. VAR. DEPTH ASPHALT CONCRETE BASE COURSE, TYPE B25.0C, AT AN AVERAGE RATE OF 114 LBS. PER SQ. YD. PER 1" DEPTH, TO BE PLACED IN LAYERS NOT LESS THAN 3" IN DEPTH OR GREATER THAN 5 1/2" IN DEPTH.
J	PROP. 6" AGGREGATE BASE COURSE.
P	PRIME COAT AT THE RATE OF 0.35 GAL. PER SQ. YD.
R1	SHOULDER BERM GUTTER
T	EARTH MATERIAL.
U	EXISTING PAVEMENT.
V	INCIDENTAL MILLING, THIS SHEET FOR DETAIL
W	WEDGING EXISTING PAVEMENT, SEE THIS SHEET FOR DETAIL

PAVEMENT EDGE SLOPES ARE 1:1 UNLESS SHOWN OTHERWISE.



MILLING AND RESURFACING:
 -L- STA. 12+50.00 TO -L- STA. 13+25.00
 -L- STA. 31+25.00 TO -L- STA. 32+00.00

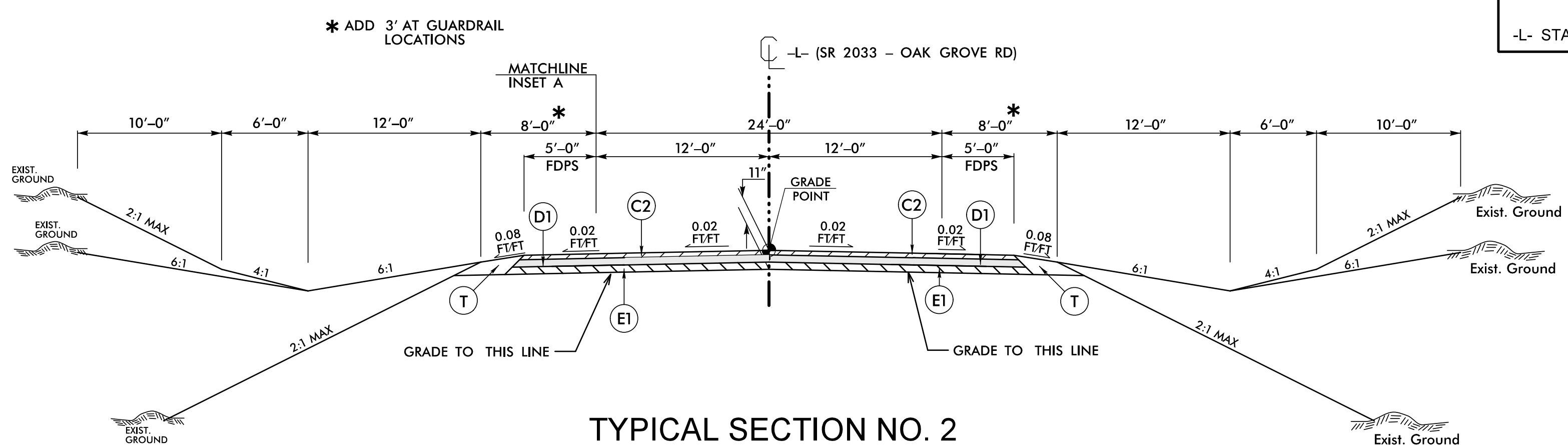


TYPICAL SECTION NO. 1

USE TYPICAL SECTION NO. 1
 -L- STA. 13+50.00 TO -L- STA. 18+02.07
 -L- STA. 26+43.22 TO -L- STA. 31+00.00

NOTE: TRANSITION BETWEEN EXISTING AND TYP. SECT. NO.1 AS FOLLOWS:

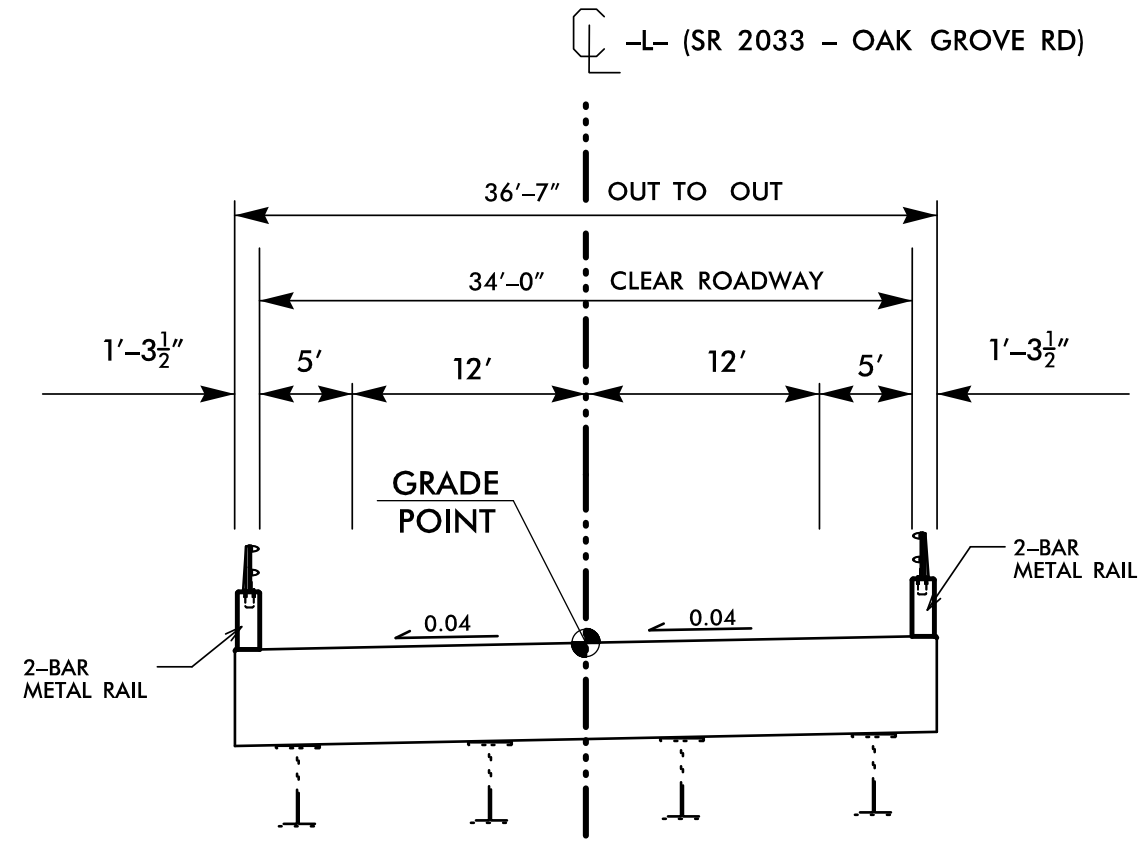
-L- STA. 12+50.00 TO -L- STA. 13+50.00
 -L- STA. 31+00.00 TO -L- STA. 32+00.00



TYPICAL SECTION NO. 2

USE TYPICAL SECTION NO. 2

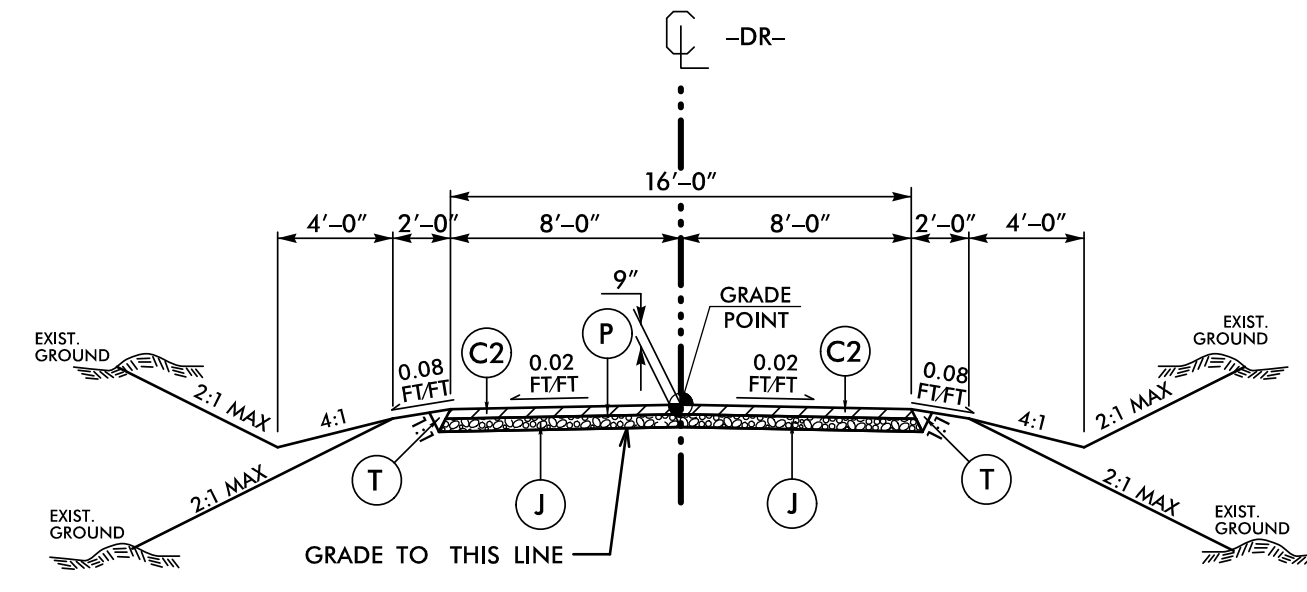
-L- STA. 18+02.07 TO -L- STA. 21+41.00 (BEGIN BRIDGE)
 -L- STA. 23+71.00 (END BRIDGE) TO -L- STA. 26+43.22



TYPICAL SECTION NO. 3

USE TYPICAL SECTION NO. 3

-L- STA. 21+41.00 TO -L- STA. 23+71.00



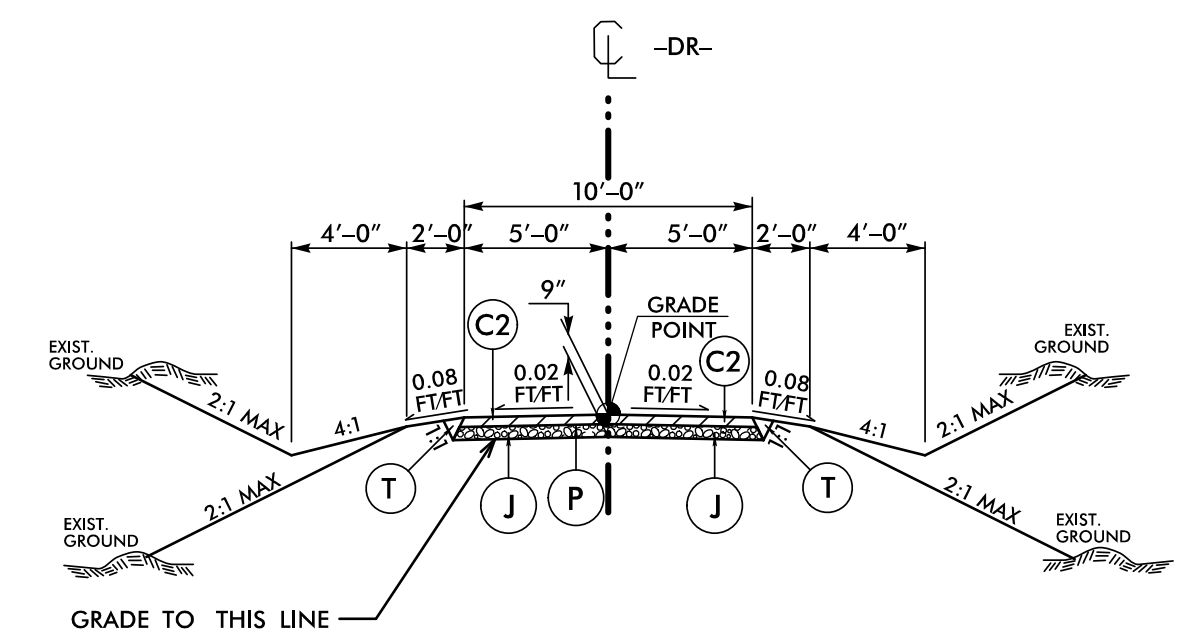
TYPICAL SECTION NO. 4

USE TYPICAL SECTION NO. 4

-DR- STA. 10+12.00 TO -DR- STA. 10+60.00

NOTE: TRANSITION TYP. SECT. 4 TO TYP. SECT. NO.5 AS FOLLOWS:

-DR- STA. 10+60.00 TO -DR- STA. 11+10.00



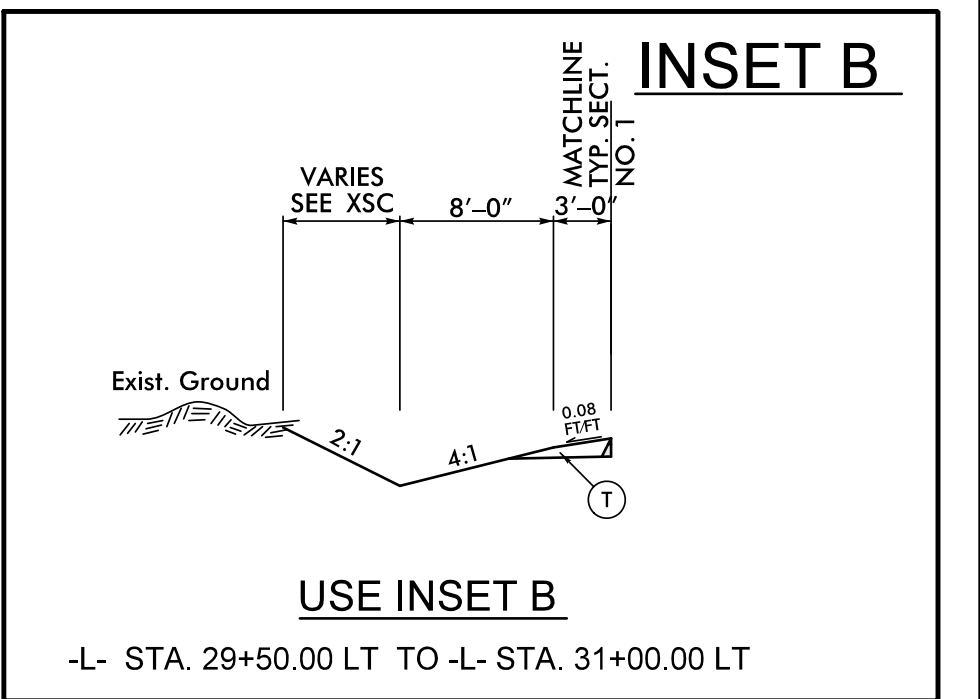
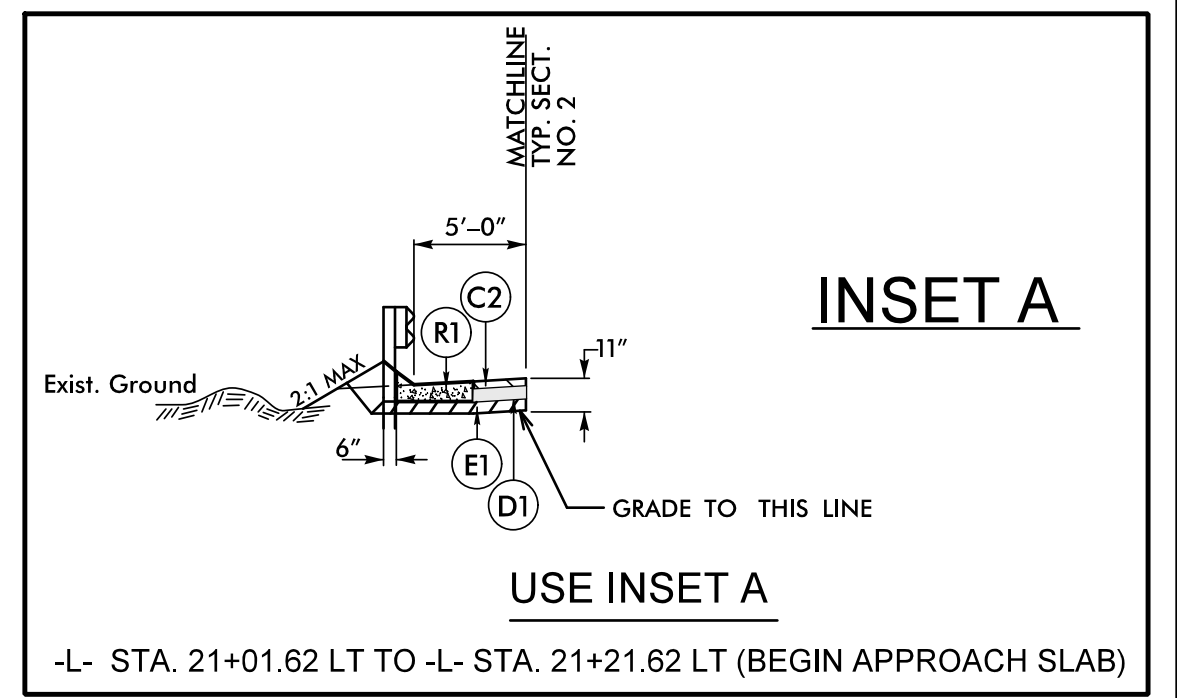
TYPICAL SECTION NO. 5

USE TYPICAL SECTION NO. 5

-DR- STA. 11+10.00 TO -DR- STA. 12+05.00

NOTE: TRANSITION EXISTING TO TYP. SECT. NO.5 AS FOLLOWS:

-DR- STA. 12+05.00 TO -DR- STA. 12+30.00



CLEVELAND COUNTY BRIDGE #220025

PROJECT REFERENCE NO. B-5845	SHEET NO. 2A-1
ROADWAY DESIGN ENGINEER JIMMY L. TERRY 041986	PAVEMENT DESIGN ENGINEER D. MATTHEW BRUNER 041986
DOCUMENT NOT CONSIDERED FINAL UNLESS ALL SIGNATURES COMPLETED	
TGS ENGINEERS 201 W. MARION ST SHELBY, NC 28150 PH (704) 476-0003 CORP. LICENSE NO.: C-0275	

6/7/2024 10:00 AM - C:\Roadway\Proj\B-5845_Rdy_tjup.dgn