

TIP PROJECT: R-5930B

CONTRACT: C204933

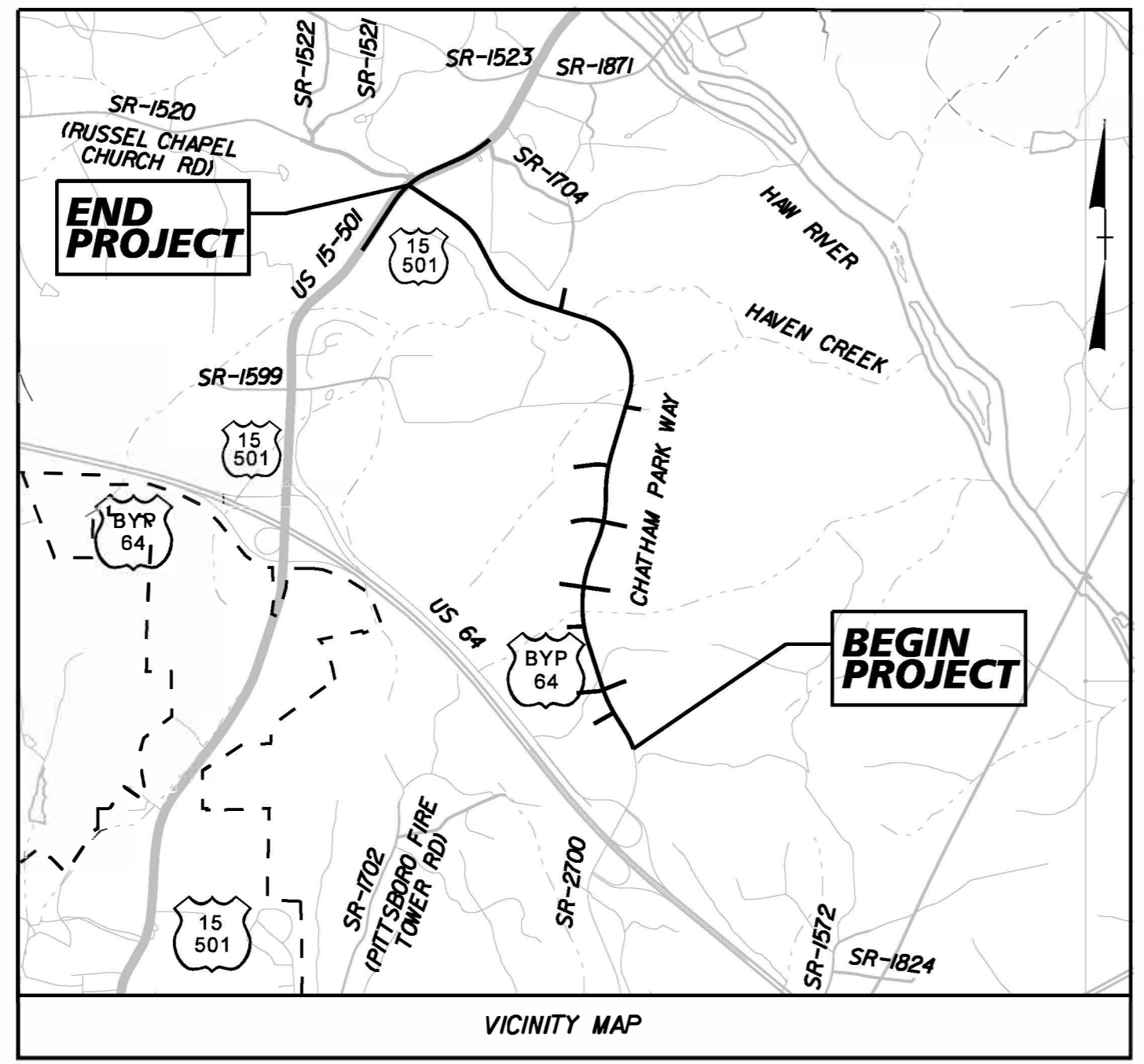
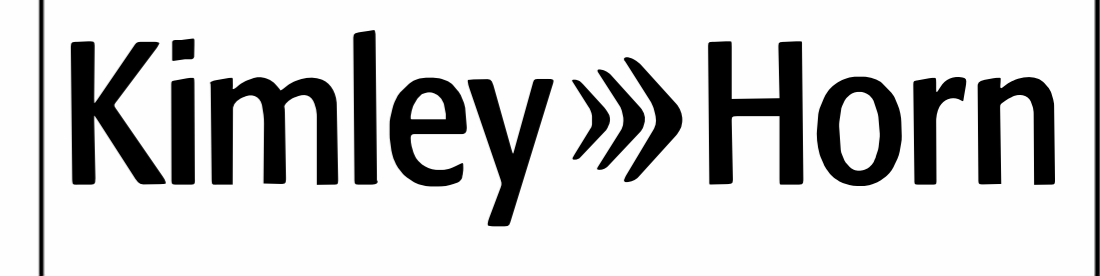
STATE OF NORTH CAROLINA
DIVISIONS OF HIGHWAYS

UTILITIES BY OTHERS PLANS
CHATHAM COUNTY

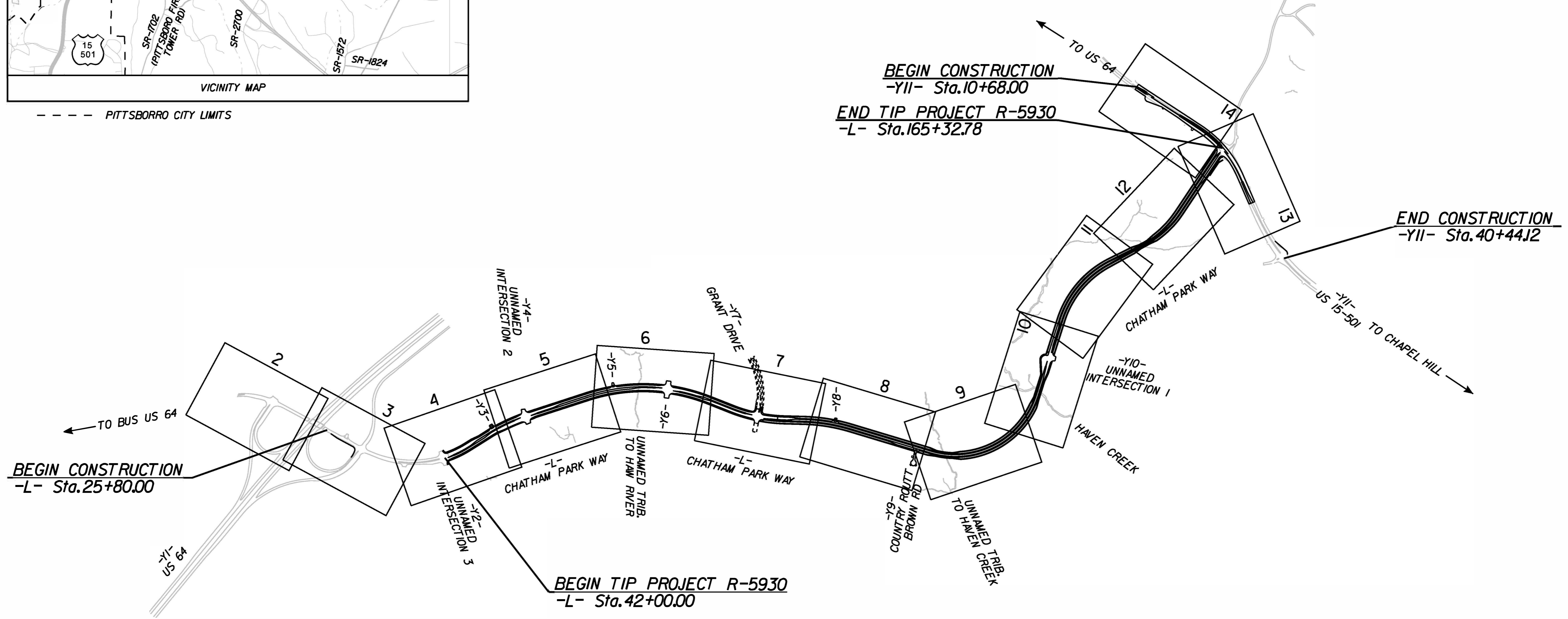
LOCATION: CHATHAM PARK WAY FROM US 64 TO US 15-501

TYPE OF WORK: UTILITY RELOCATIONS BY OTHERS

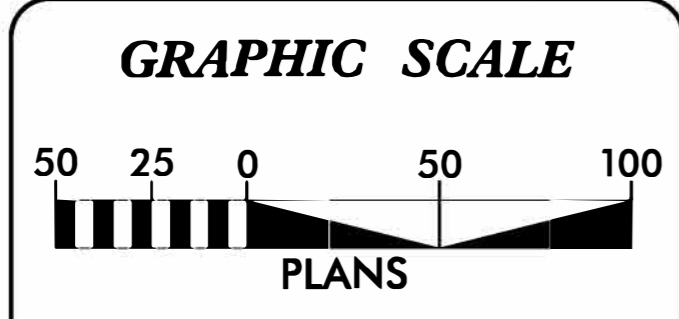
T.I.P. NO.	SHEET NO.
R-5930B	UO-1



--- PITTSBORO CITY LIMITS

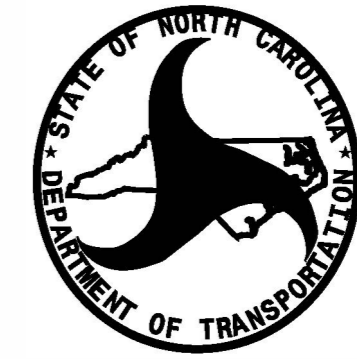


DOCUMENT NOT CONSIDERED FINAL
UNLESS ALL SIGNATURES COMPLETED



INDEX OF SHEETS	
SHEET NO.	DESCRIPTION
UO-1	TITLE SHEET
UO-2 THRU UO-14	UTILITY BY OTHERS PLAN SHEETS

UTILITY OWNERS ON PROJECT	
(A) POWER	- DUKE ENERGY PROGRESS (DISTRIBUTION); JOCELYN ROBERTSON 919-573-6753
(B) TELECOMMUNICATIONS	- BRIGHTSPEED; TIMOTHY NUNLEY 276-340-7392
(C) CATV	- SPECTRUM; ROBERT DABROWSKI 919-288-4867
(D) GAS	- ENBRIDGE GAS (DISTRIBUTION); MICHAEL DAVIDSON 984-365-1172
(E) TELECOMMUNICATIONS	- CONTERRA; KIM BROWN 704-778-5685

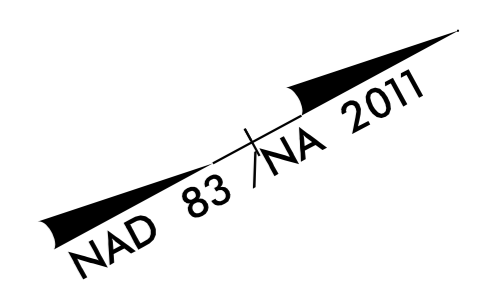


PREPARED FOR OFFICE OF:
DIVISION OF HIGHWAYS
UTILITIES UNIT
UTILITIES ENGINEERING

1555 MAIL SERVICES CENTER
RALEIGH NC 27699-1555
PHONE (919) 707-6690
FAX (919) 250-4151

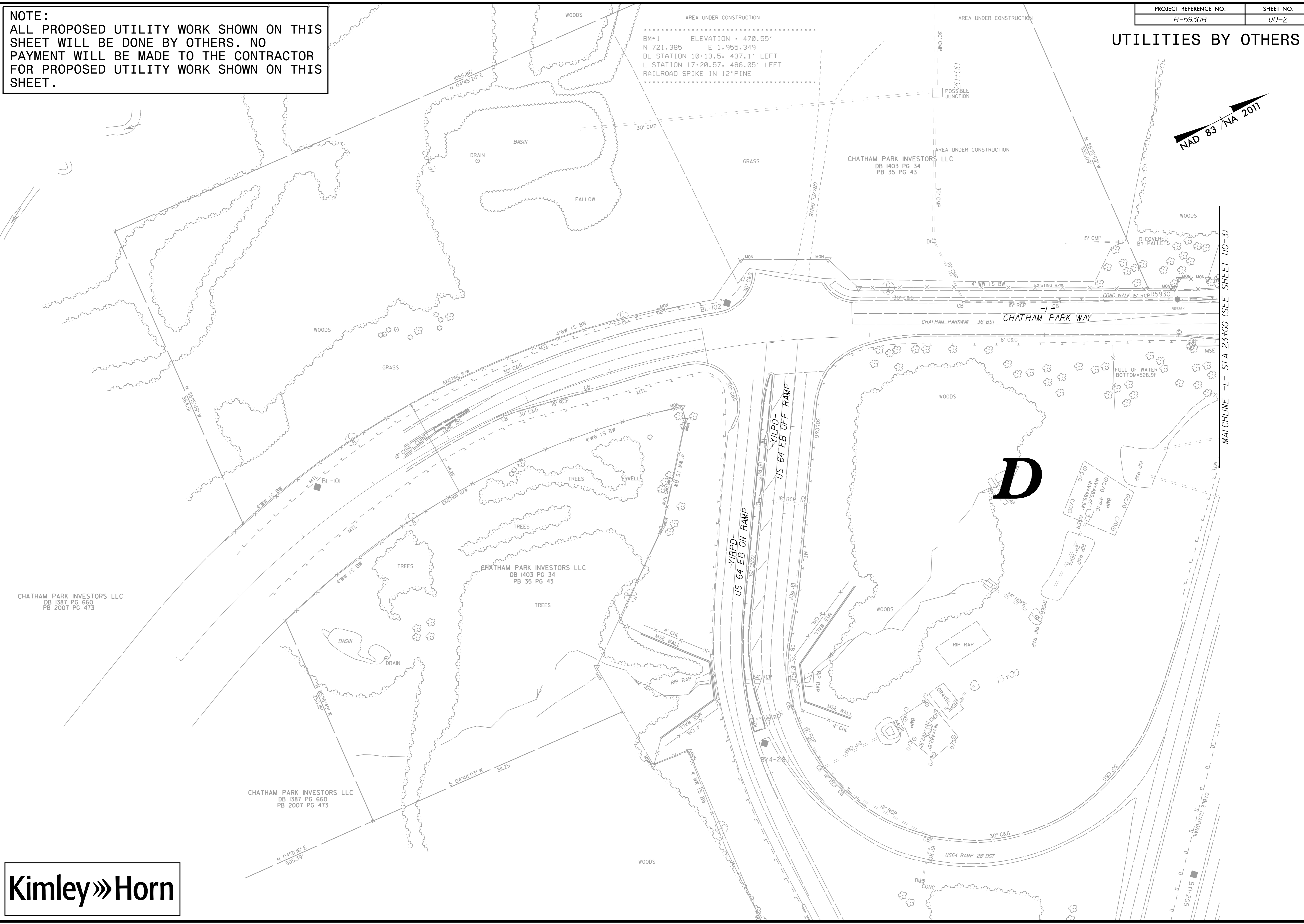
AMY D. YORK	CENTRAL UTILITIES ENGINEER
TRAVIS MORGAN	DIVISION UTILITY ENGINEER
JAMIE YOW	UTILITIES COORDINATOR

UTILITIES BY OTHERS



NOTE:
ALL PROPOSED UTILITY WORK SHOWN ON THIS SHEET WILL BE DONE BY OTHERS. NO PAYMENT WILL BE MADE TO THE CONTRACTOR FOR PROPOSED UTILITY WORK SHOWN ON THIS SHEET.

BM*1 ELEVATION = 470.55'
N 721.385 E 1,955.349
BL STATION 10+13.5, 437.1' LEFT
L STATION 17+20.57, 486.05' LEFT
RAILROAD SPIKE IN 12" PINE



CHATHAM PARK INVESTORS LLC
DB 1387 PG 660
PB 2007 PG 473

CHATHAM PARK INVESTORS LLC
DB 1387 PG 660
PB 2007 PG 473

D

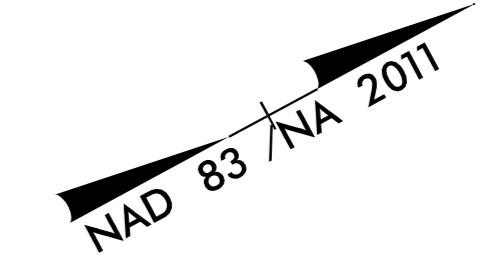
MATCHLINE -L- STA 23+00 (SEE SHEET U0-3)

K:\RAL_Roadway\01036532 - R-5930 North CPW Utilities\BOP\Pro\AR-5930_ubs_2.dgn

UTILITIES BY OTHERS

NOTE:
ALL PROPOSED UTILITY WORK SHOWN ON THIS SHEET WILL BE DONE BY OTHERS. NO PAYMENT WILL BE MADE TO THE CONTRACTOR FOR PROPOSED UTILITY WORK SHOWN ON THIS SHEET.

CHATHAM PARK INVESTORS LLC
DB 1382 PG 377
PB 4 PG 74
PB 2021 PG 49



MATCHLINE -L- STA 37+00 (SEE SHEET U0-4)

MATCHLINE -L- STA 23+00 (SEE SHEET U0-2)

BEGIN CONSTRUCTION
-L- Sta. 25+80.00

END CONSTRUCTION
-YILPA- POT Sta. 11+44.10

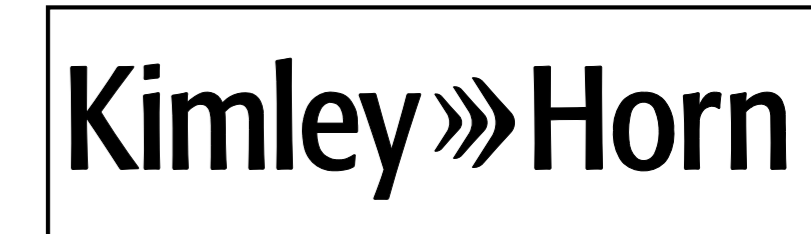
.....
BM*3 ELEVATION = 540.21'
N 722.729 E 1.956.641
BL STATION 27+08.5, 73.5' RIGHT
L STATION 34+21.49, 73.78' RIGHT
RAILROAD SPIKE IN 20' OAK
.....

①
CHATHAM PARK INVESTORS LLC
DB 1382 PG 377
PB 4 PG 74
PB 2021 PG 49
PB 2021 PG 191

A

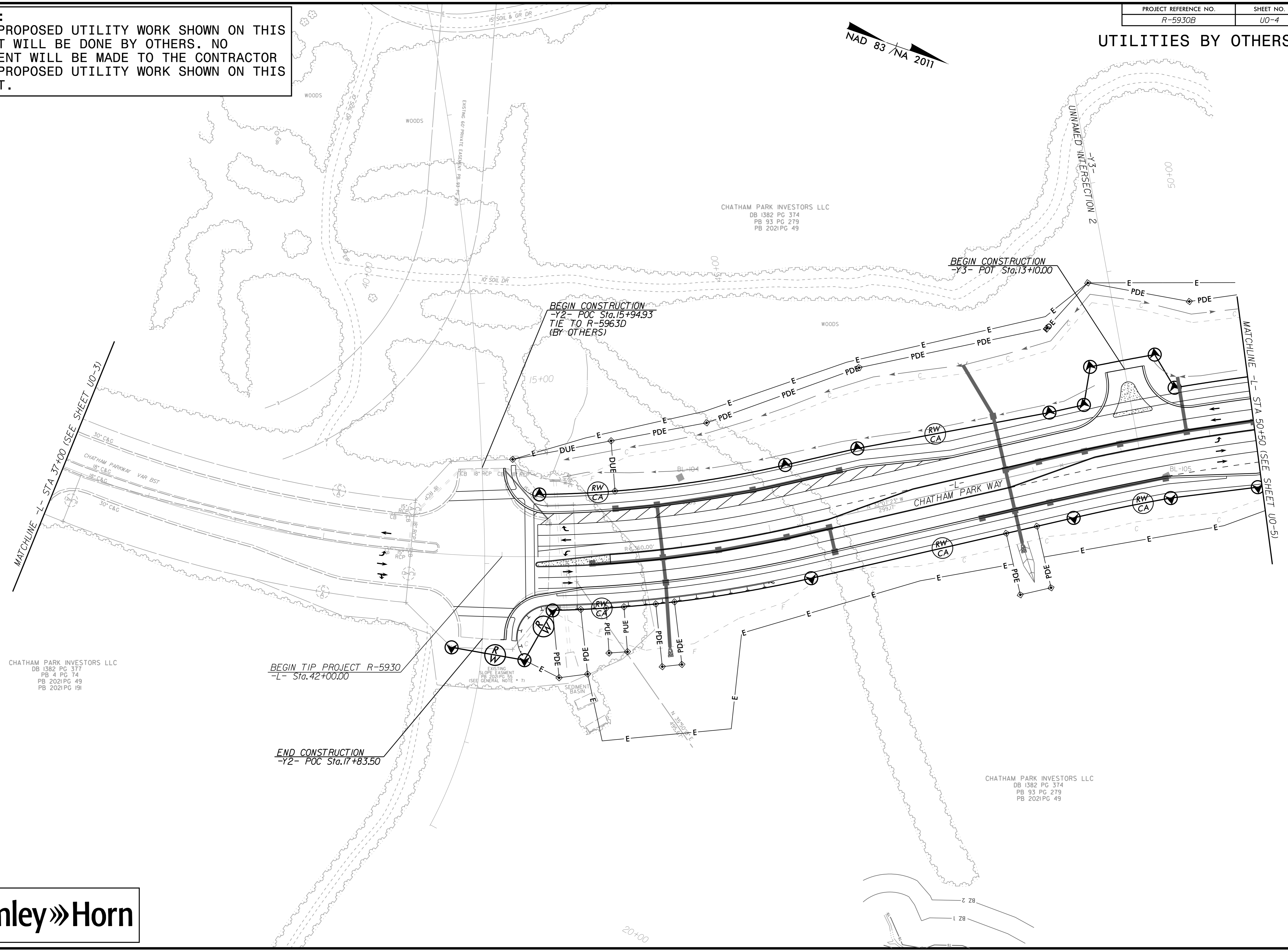
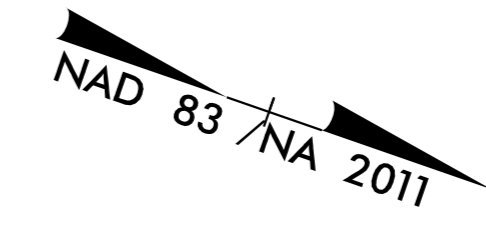
K:\RAL_Roadway\01036532 - R-5930 North CPW\Utilities\U0\Pro\AR-5930_u0_3.dgn

12/9/2024



UTILITIES BY OTHERS

NOTE:
ALL PROPOSED UTILITY WORK SHOWN ON THIS SHEET WILL BE DONE BY OTHERS. NO PAYMENT WILL BE MADE TO THE CONTRACTOR FOR PROPOSED UTILITY WORK SHOWN ON THIS SHEET.



CHATHAM PARK INVESTORS LLC
DB 1382 PG 374
PB 93 PG 279
PB 2021PG 49

BEGIN CONSTRUCTION
-Y3- POC Sta.13+10.00

BEGIN CONSTRUCTION
-Y2- POC Sta.15+94.93
TIE TO R-5963D
(BY OTHERS)

BEGIN TIP PROJECT R-5930
-L- Sta.42+00.00

END CONSTRUCTION
-Y2- POC Sta.17+83.50

CHATHAM PARK INVESTORS LLC
DB 1382 PG 377
PB 4 PG 74
PB 2021PG 49
PB 2021PG 191

CHATHAM PARK INVESTORS LLC
DB 1382 PG 374
PB 93 PG 279
PB 2021PG 49

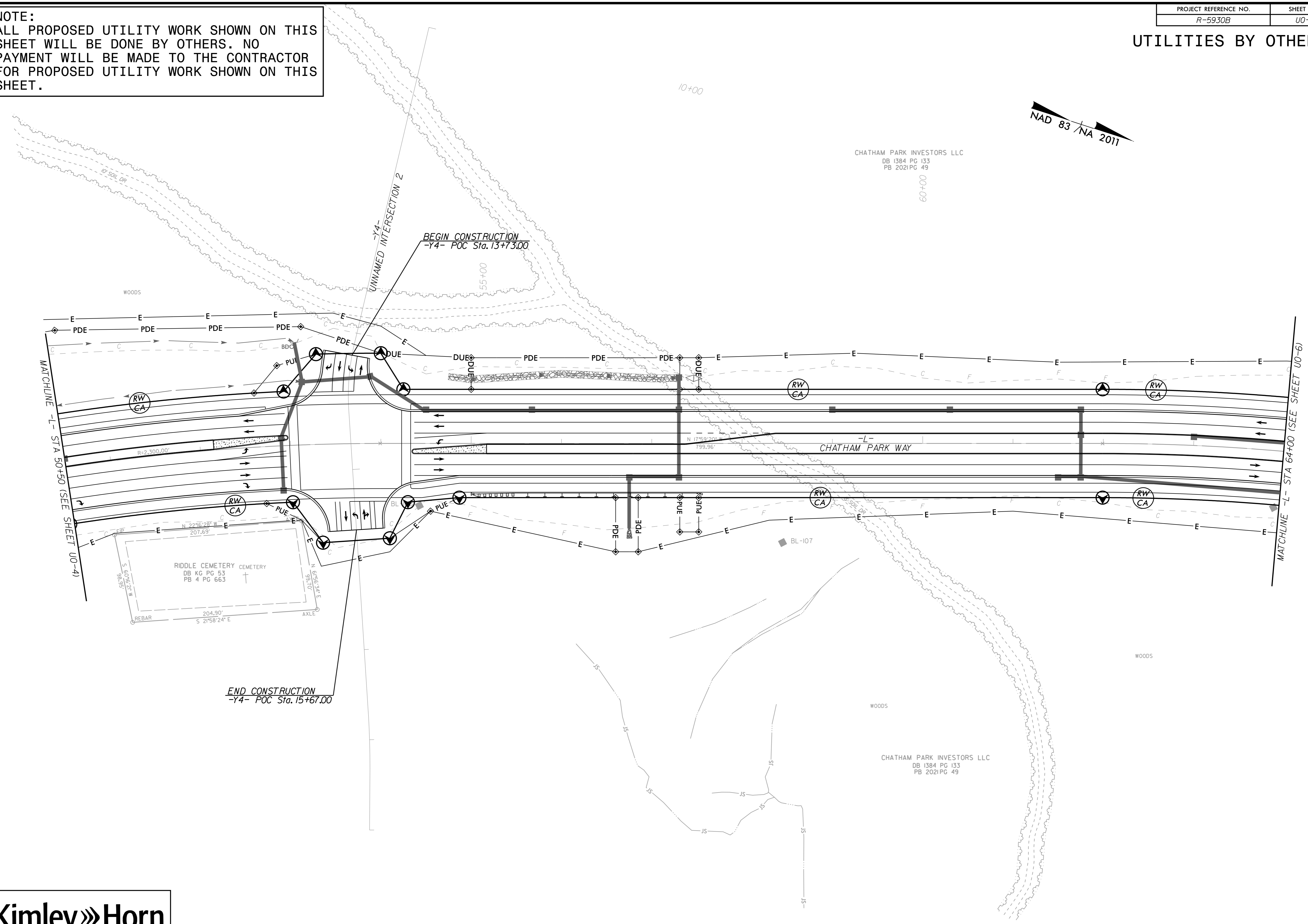
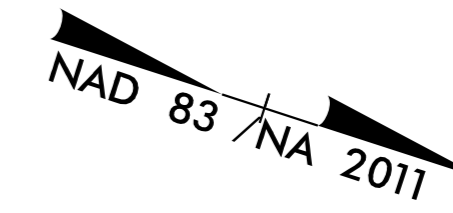
MATCHLINE -L- STA 37+00 (SEE SHEET U0-3)

MATCHLINE -L- STA 50+50 (SEE SHEET U0-5)

K:\RAL_Roadway\01036532 - R-5930 North CPW Utilities\B0\Pro\AR-5930_ubb_4.dgn

UTILITIES BY OTHERS

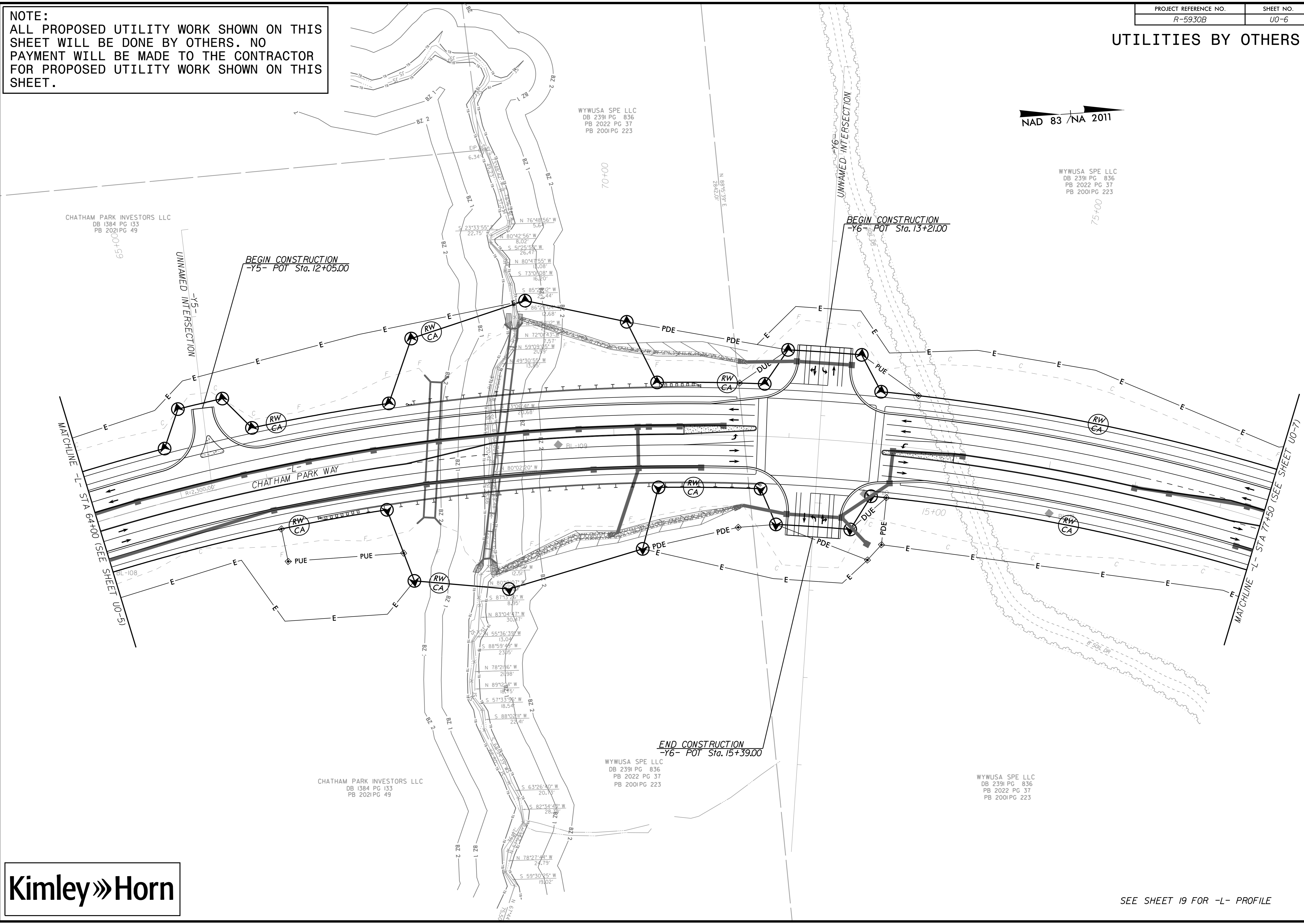
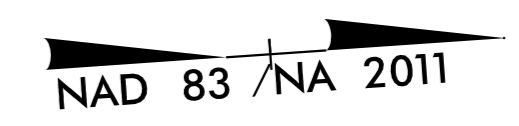
NOTE:
ALL PROPOSED UTILITY WORK SHOWN ON THIS SHEET WILL BE DONE BY OTHERS. NO PAYMENT WILL BE MADE TO THE CONTRACTOR FOR PROPOSED UTILITY WORK SHOWN ON THIS SHEET.



K:\RAL_Roadway\01036532 - R-5930 North CPW Utilities\BOP\Pro\AR-5930_u0-5.dgn

UTILITIES BY OTHERS

NOTE:
 ALL PROPOSED UTILITY WORK SHOWN ON THIS SHEET WILL BE DONE BY OTHERS. NO PAYMENT WILL BE MADE TO THE CONTRACTOR FOR PROPOSED UTILITY WORK SHOWN ON THIS SHEET.



CHATHAM PARK INVESTORS LLC
 DB 1384 PG 133
 PB 2021 PG 49

WYWUSA SPE LLC
 DB 2391 PG 836
 PB 2022 PG 37
 PB 2001 PG 223

WYWUSA SPE LLC
 DB 2391 PG 836
 PB 2022 PG 37
 PB 2001 PG 223

CHATHAM PARK INVESTORS LLC
 DB 1384 PG 133
 PB 2021 PG 49

WYWUSA SPE LLC
 DB 2391 PG 836
 PB 2022 PG 37
 PB 2001 PG 223

WYWUSA SPE LLC
 DB 2391 PG 836
 PB 2022 PG 37
 PB 2001 PG 223

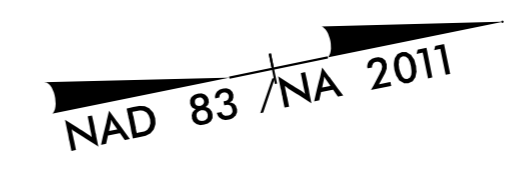
K:\RAL_Roadway\01036532 - R-5930 North CPW Utilities\B0\Pro\AR-5930_u0-6.dgn



SEE SHEET 19 FOR -L- PROFILE

UTILITIES BY OTHERS

BM*6 ELEVATION = 445.84'
 N 728.259 E 1.955.699
 BL STATION 84+67.9, 331.0' LEFT
 L STATION 91+56.97, 375.34' LEFT
 RAILROAD SPIKE IN 13'OAK



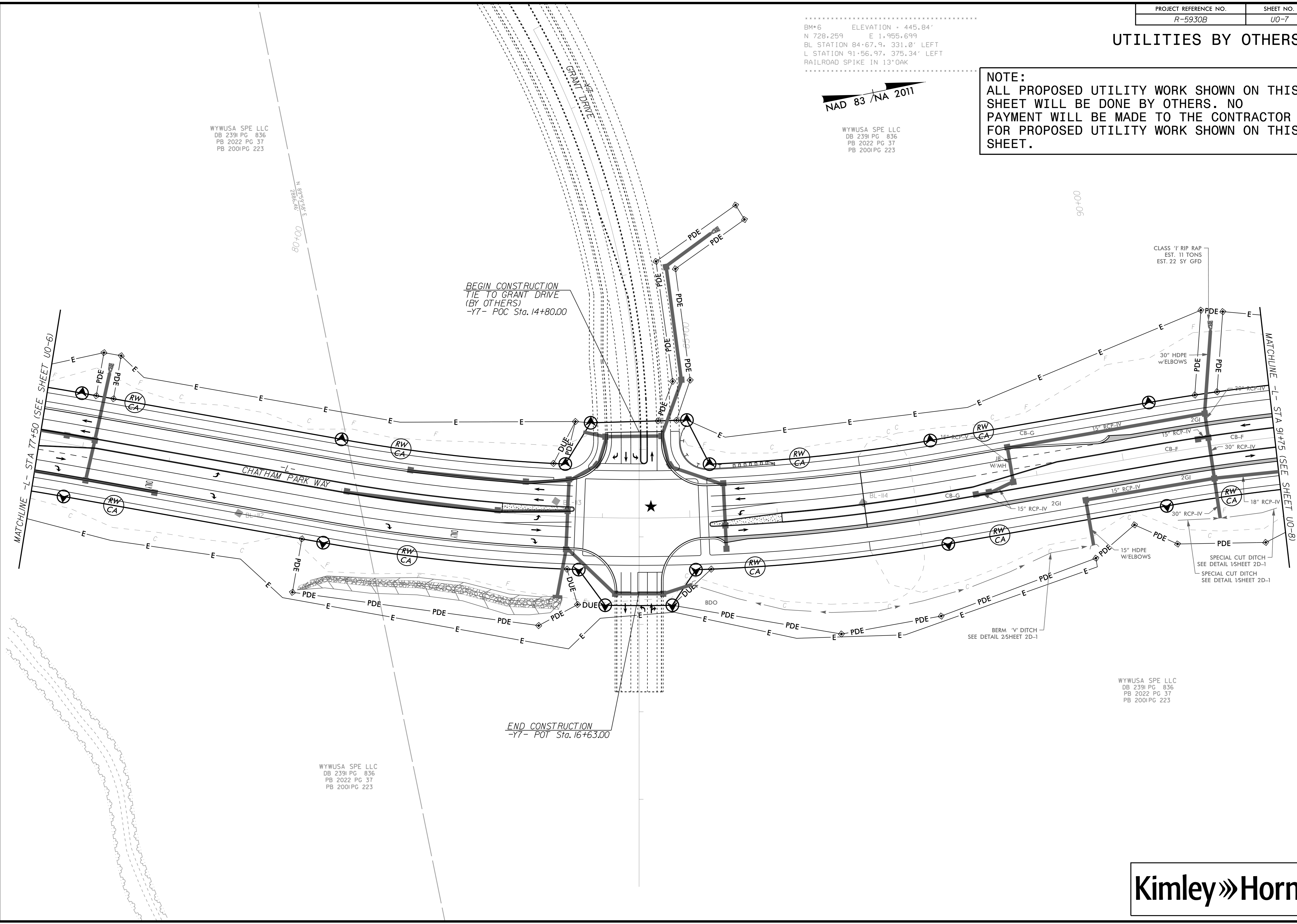
NOTE:
 ALL PROPOSED UTILITY WORK SHOWN ON THIS SHEET WILL BE DONE BY OTHERS. NO PAYMENT WILL BE MADE TO THE CONTRACTOR FOR PROPOSED UTILITY WORK SHOWN ON THIS SHEET.

WYWUSA SPE LLC
 DB 2391 PG 836
 PB 2022 PG 37
 PB 2001 PG 223

WYWUSA SPE LLC
 DB 2391 PG 836
 PB 2022 PG 37
 PB 2001 PG 223

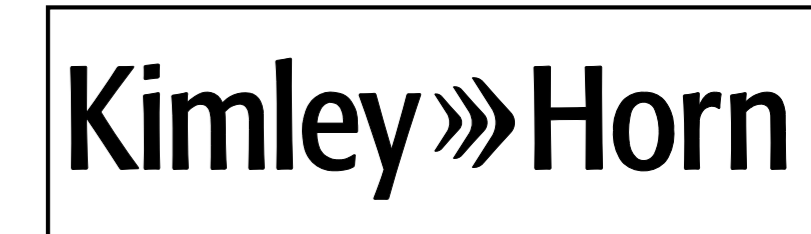
WYWUSA SPE LLC
 DB 2391 PG 836
 PB 2022 PG 37
 PB 2001 PG 223

WYWUSA SPE LLC
 DB 2391 PG 836
 PB 2022 PG 37
 PB 2001 PG 223



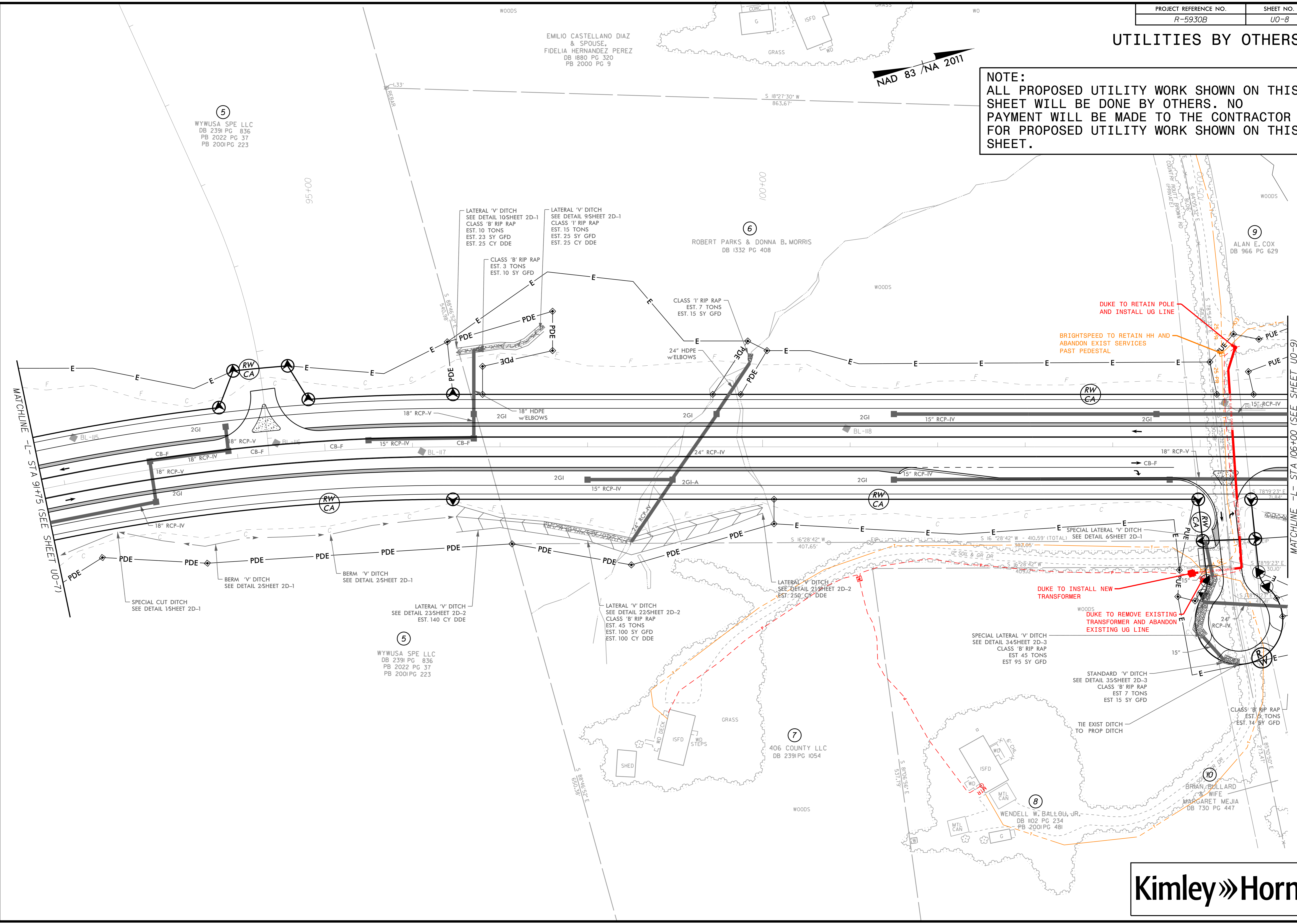
K:\RAL_Roadway\01036532 - R-5930 North CPW Utilities\BOP\Pro\AR-5930_u0_7.dgn

12/9/2024



UTILITIES BY OTHERS

NOTE:
 ALL PROPOSED UTILITY WORK SHOWN ON THIS SHEET WILL BE DONE BY OTHERS. NO PAYMENT WILL BE MADE TO THE CONTRACTOR FOR PROPOSED UTILITY WORK SHOWN ON THIS SHEET.



5
 WYWUSA SPE LLC
 DB 2391 PG 836
 PB 2022 PG 37
 PB 2001 PG 223

EMILIO CASTELLANO DIAZ & SPOUSE,
 FIDELIA HERNANDEZ PEREZ
 DB 1880 PG 320
 PB 2000 PG 9

6
 ROBERT PARKS & DONNA B. MORRIS
 DB 1332 PG 408

9
 ALAN E. COX
 DB 966 PG 629

5
 WYWUSA SPE LLC
 DB 2391 PG 836
 PB 2022 PG 37
 PB 2001 PG 223

7
 406 COUNTY LLC
 DB 2391 PG 1054

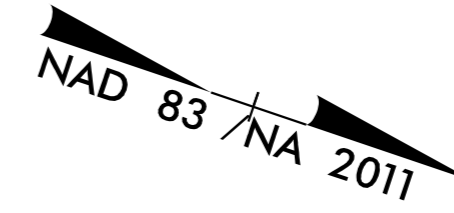
8
 WENDELL W. BALLOU, JR.
 DB 1102 PG 234
 PB 2001 PG 481

10
 BRIAN BULLARD & WIFE
 MARGARET MEJIA
 DB 730 PG 447

K:\RAL_Roadway\01036532 - R-5930 North CPW Utilities\UBO\Proj\AR-5930_UBO_Bdgn

12/9/2024

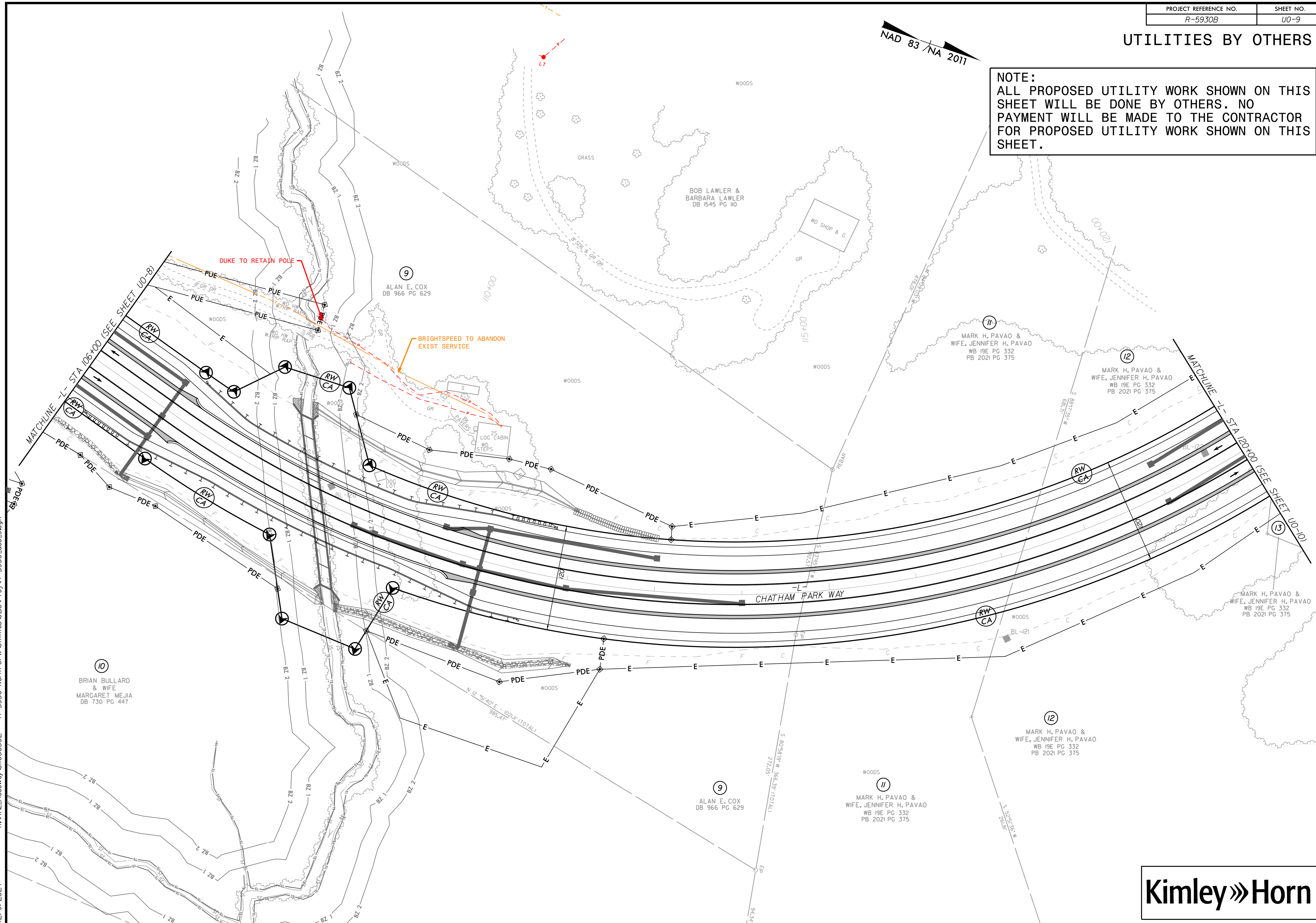
UTILITIES BY OTHERS



NOTE:
ALL PROPOSED UTILITY WORK SHOWN ON THIS SHEET WILL BE DONE BY OTHERS. NO PAYMENT WILL BE MADE TO THE CONTRACTOR FOR PROPOSED UTILITY WORK SHOWN ON THIS SHEET.

REVISIONS

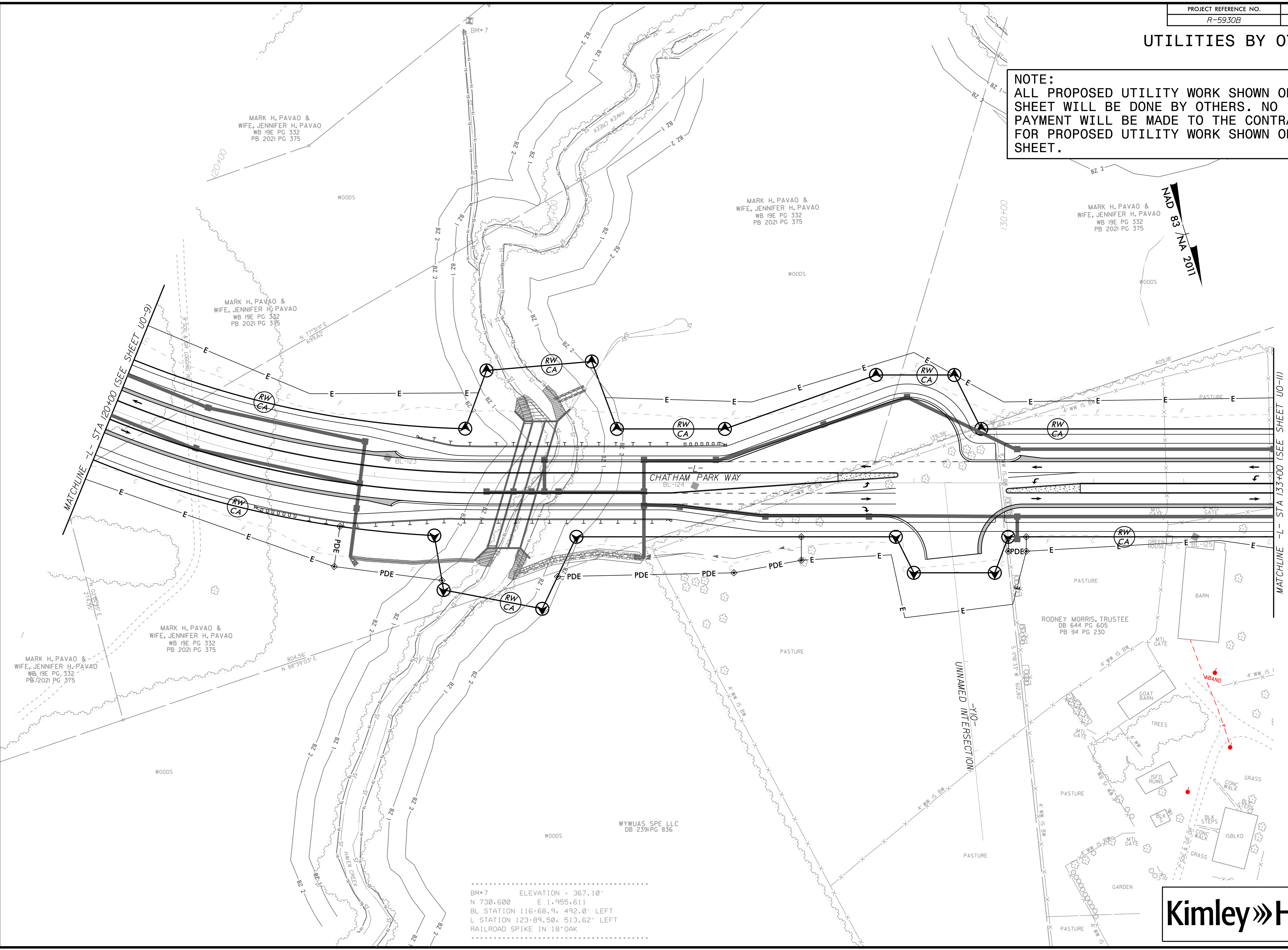
K:\RAL_Roadway\01036532 - R-5930 North CPW\Utilities\B0VPro\AR-5930_ubb_9.dgn
12/9/2024



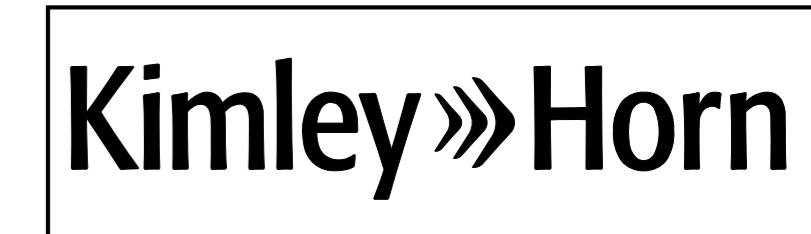
UTILITIES BY OTHERS

NOTE:
ALL PROPOSED UTILITY WORK SHOWN ON THIS SHEET WILL BE DONE BY OTHERS. NO PAYMENT WILL BE MADE TO THE CONTRACTOR FOR PROPOSED UTILITY WORK SHOWN ON THIS SHEET.

NAD 83
NA 2011

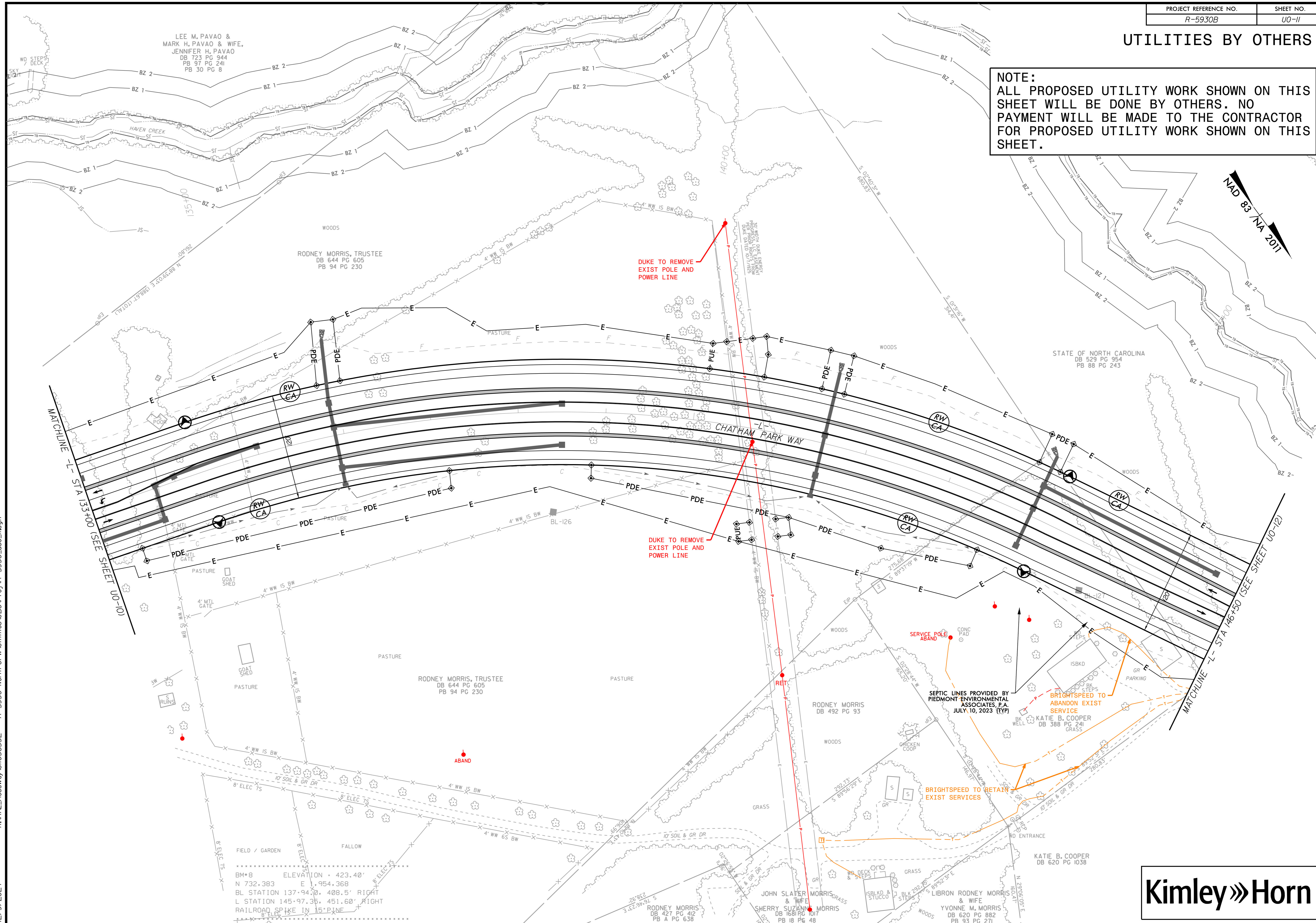
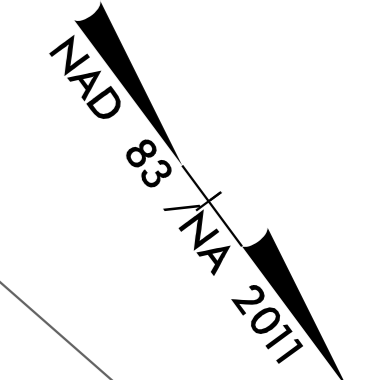


..... ELEVATION = 367.10'
 N 730.600 E 1.955.611
 BL STATION 116+68.9, 492.0' LEFT
 L STATION 123+89.50, 513.62' LEFT
 RAILROAD SPIKE IN 18" OAK



UTILITIES BY OTHERS

NOTE:
 ALL PROPOSED UTILITY WORK SHOWN ON THIS SHEET WILL BE DONE BY OTHERS. NO PAYMENT WILL BE MADE TO THE CONTRACTOR FOR PROPOSED UTILITY WORK SHOWN ON THIS SHEET.



LEE M. PAVAO &
 MARK H. PAVAO & WIFE,
 JENNIFER H. PAVAO
 DB 723 PG 944
 PB 97 PG 241
 PB 30 PG 8

RODNEY MORRIS, TRUSTEE
 DB 644 PG 605
 PB 94 PG 230

RODNEY MORRIS, TRUSTEE
 DB 644 PG 605
 PB 94 PG 230

RODNEY MORRIS
 DB 492 PG 93

KATIE B. COOPER
 DB 620 PG 1038

RODNEY MORRIS
 DB 427 PG 412
 PB A PG 638

JOHN SLATER MORRIS & WIFE
 SHERRY SUZANN MORRIS
 DB 1681 PG 017
 PB 18 PG 48

LIBRON RODNEY MORRIS & WIFE
 YVONNE M. MORRIS
 DB 620 PG 882
 PB 93 PG 271

BM*8 ELEVATION = 423.40'
 N 732.383 E 1,954.368
 BL STATION 137+94.70, 408.5' RIGHT
 L STATION 145+97.36, 451.60' RIGHT
 RAILROAD SPIKE IN 15\"/>

SEPTIC LINES PROVIDED BY
 PIEDMONT ENVIRONMENTAL
 ASSOCIATES, P.A.
 JULY 10, 2023 (TYP)

BRIGHTSPEED TO RETAIN
 EXIST SERVICES

BRIGHTSPEED TO
 ABANDON EXIST
 SERVICE

DUKE TO REMOVE
 EXIST POLE AND
 POWER LINE

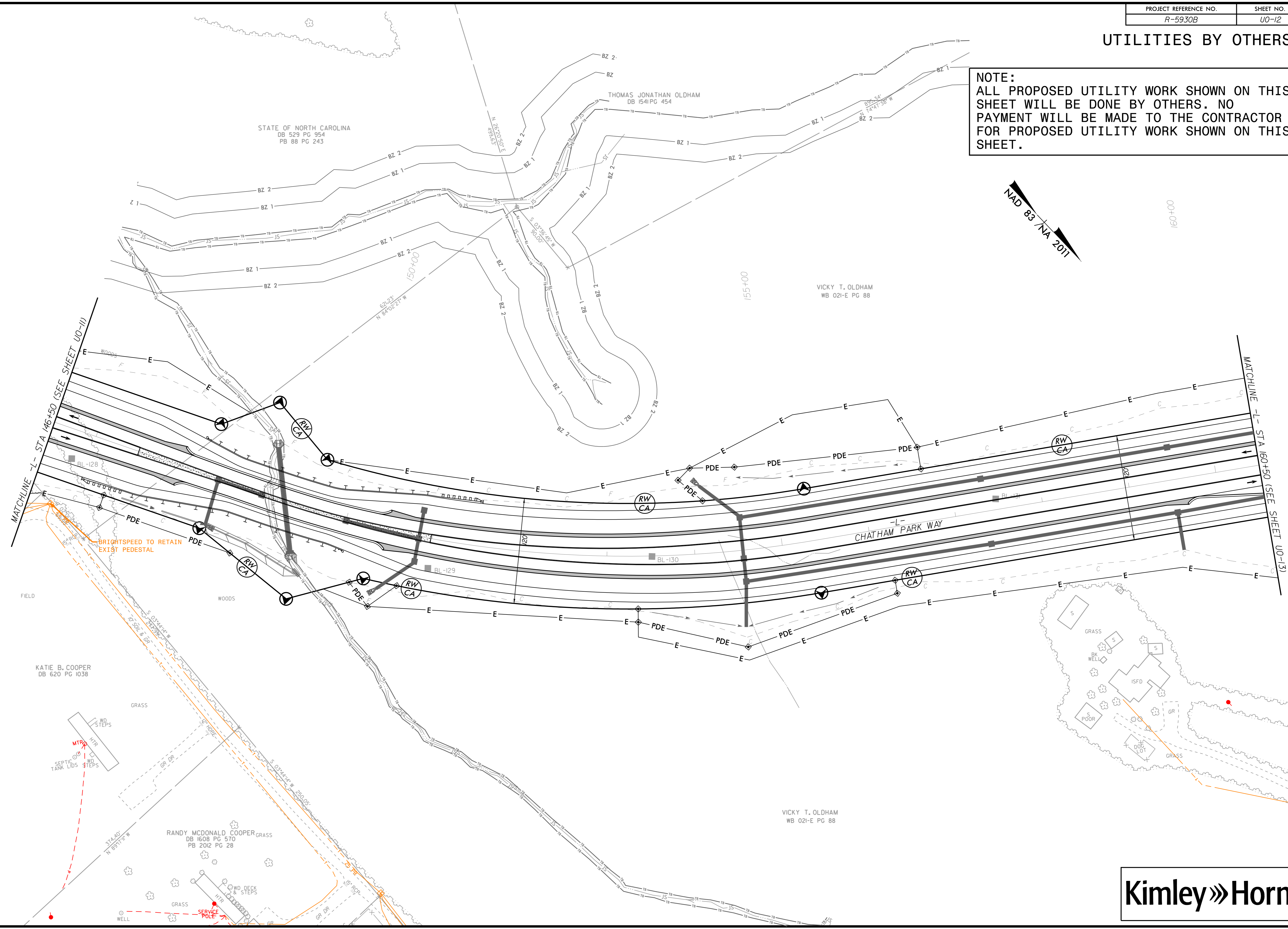
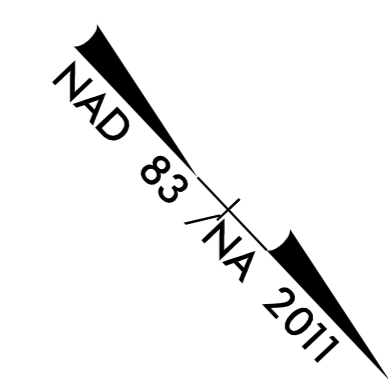
DUKE TO REMOVE
 EXIST POLE AND
 POWER LINE



K:\RAL_Roadway\010365532 - R-5930 North CPW Utilities\BOD\Pro\AR-5930_u0-11.dgn
 12/9/2024

UTILITIES BY OTHERS

NOTE:
ALL PROPOSED UTILITY WORK SHOWN ON THIS SHEET WILL BE DONE BY OTHERS. NO PAYMENT WILL BE MADE TO THE CONTRACTOR FOR PROPOSED UTILITY WORK SHOWN ON THIS SHEET.

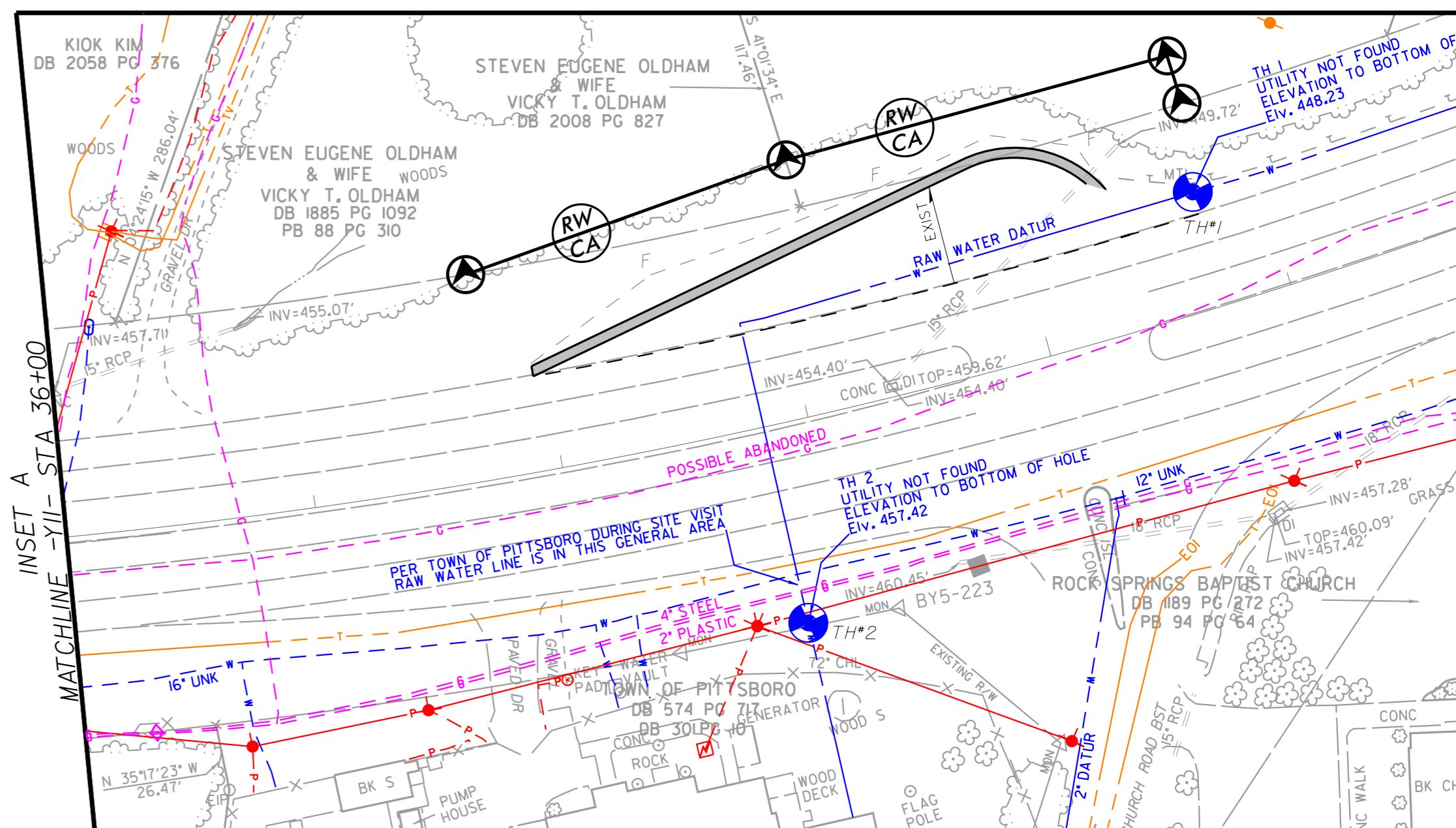
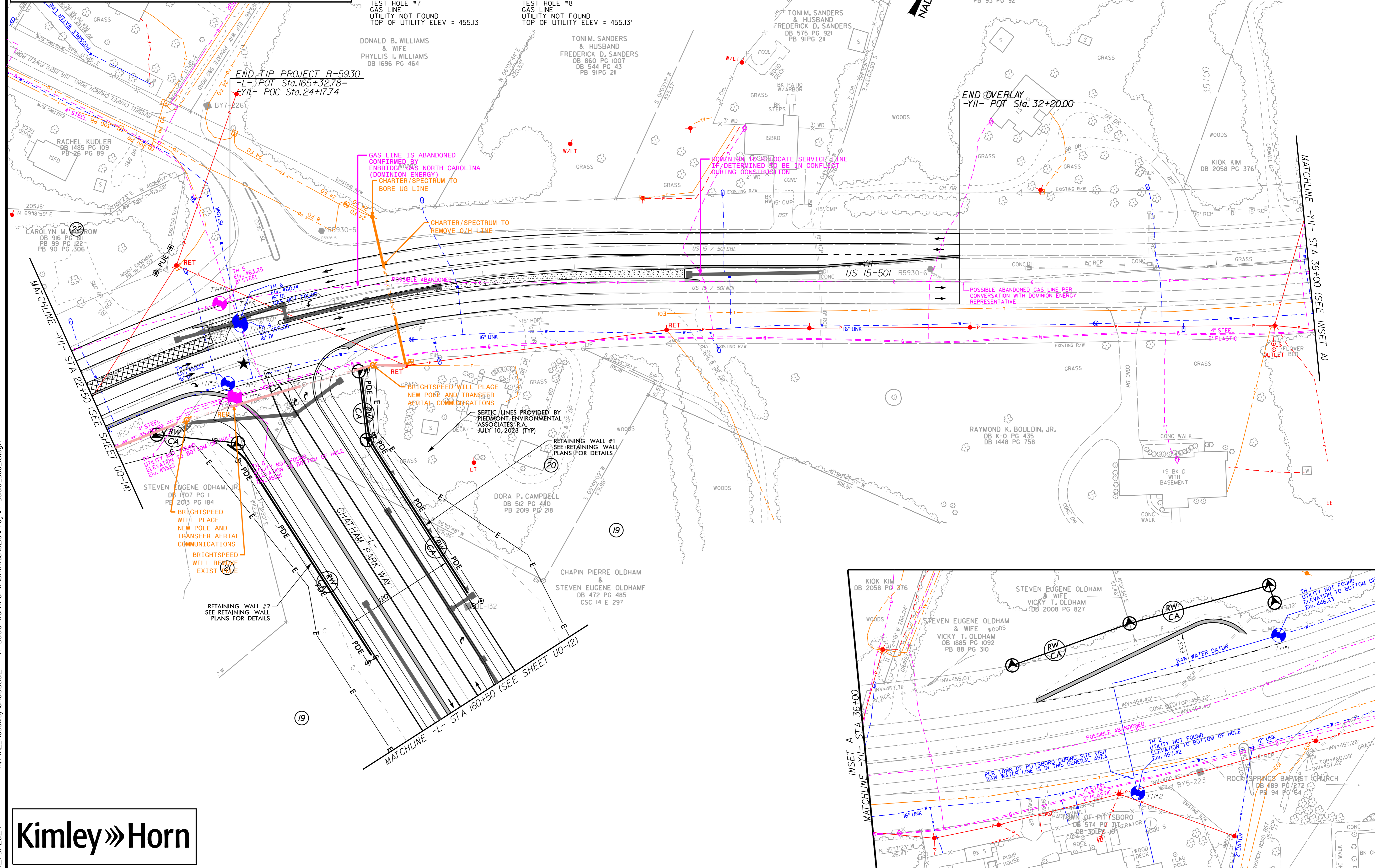


K:\RAL_Roadway\01036532 - R-5930 North CPW\Utilities\B0\Pro\A-R-5930_u0-12.dgn
12/9/2024

UTILITIES BY OTHERS

NOTE:
 ALL PROPOSED UTILITY WORK SHOWN ON THIS SHEET WILL BE DONE BY OTHERS. NO PAYMENT WILL BE MADE TO THE CONTRACTOR FOR PROPOSED UTILITY WORK SHOWN ON THIS SHEET.

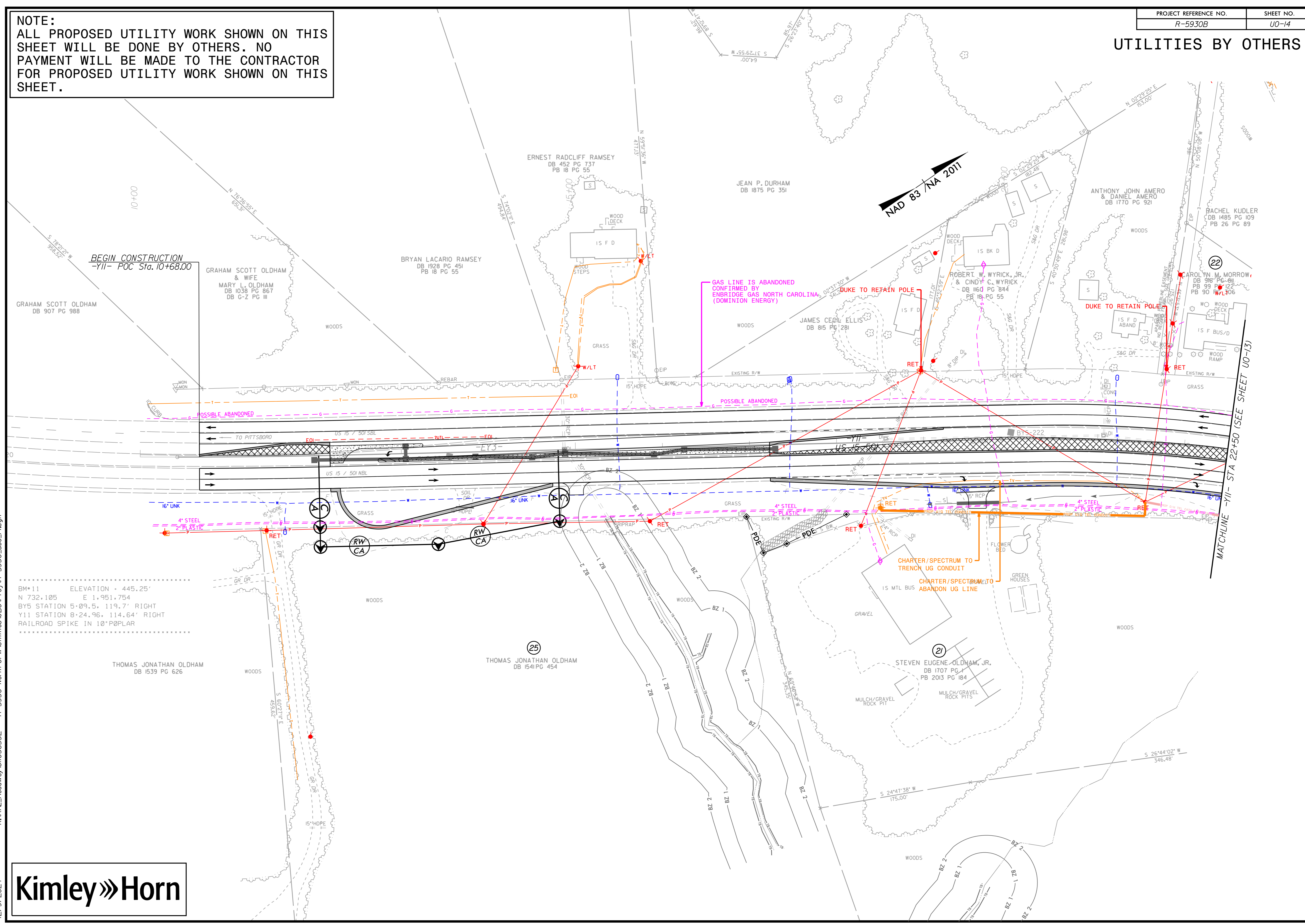
TEST HOLES		
TEST HOLE #1 RAW WATER LINE UTILITY NOT FOUND TOP OF UTILITY ELEV = 448.23'	TEST HOLE #2 RAW WATER LINE UTILITY NOT FOUND TOP OF UTILITY ELEV = 457.42'	TEST HOLE #3 16" DUCTILE IRON WATER MAIN EXIST GROUND ELEV = 462.12' TOP OF UTILITY ELEV = 459.12'
TEST HOLE #4 16" DUCTILE IRON WATER MAIN EXIST GROUND ELEV = 466.76' TOP OF UTILITY ELEV = 460.08'	TEST HOLE #5 8" STEEL GAS MAIN EXIST GROUND ELEV = 467.68' TOP OF UTILITY ELEV = 463.25'	TEST HOLE #6 16" DUCTILE IRON WATER MAIN EXIST GROUND ELEV = 466.67' TOP OF UTILITY ELEV = 460.14'
TEST HOLE #7 GAS LINE UTILITY NOT FOUND TOP OF UTILITY ELEV = 455.13	TEST HOLE #8 GAS LINE UTILITY NOT FOUND TOP OF UTILITY ELEV = 455.13'	



K:\RAL_Roadway\010365532 - R-5930 North CPW\Utilities\UBO\Pro\AR-5930_UBO_13.dgn

UTILITIES BY OTHERS

NOTE:
ALL PROPOSED UTILITY WORK SHOWN ON THIS SHEET WILL BE DONE BY OTHERS. NO PAYMENT WILL BE MADE TO THE CONTRACTOR FOR PROPOSED UTILITY WORK SHOWN ON THIS SHEET.



BM*11 ELEVATION = 445.25'
N 732.105 E 1.951.754
BY5 STATION 5+09.5, 119.7' RIGHT
Y11 STATION 8+24.96, 114.64' RIGHT
RAILROAD SPIKE IN 10' POPLAR

K:\RAL_Roadway\01036532 - R-5930 North CPW Utilities\BOP\Proj\R-5930_UBO_14.dgn