

5/14/1999

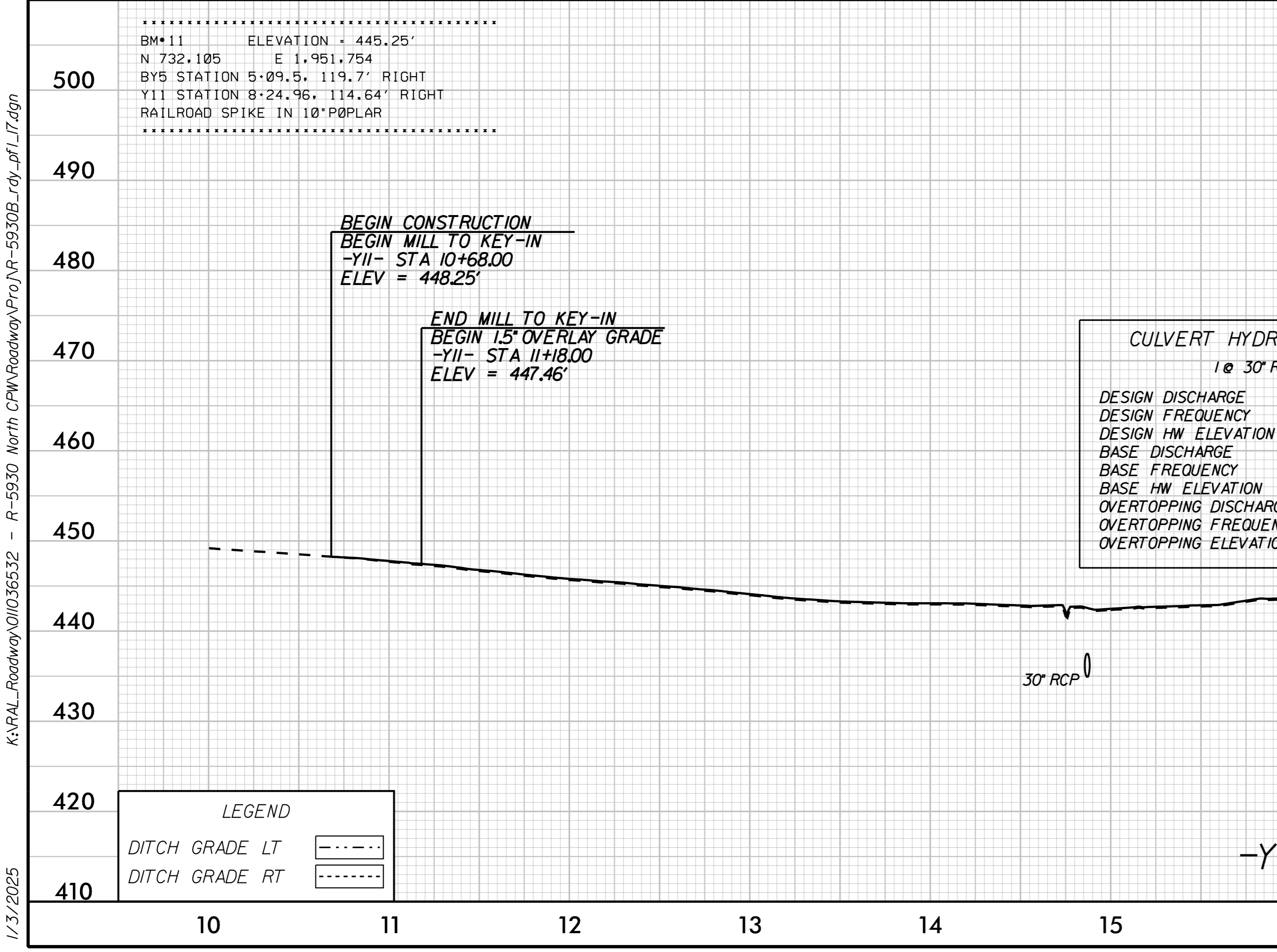
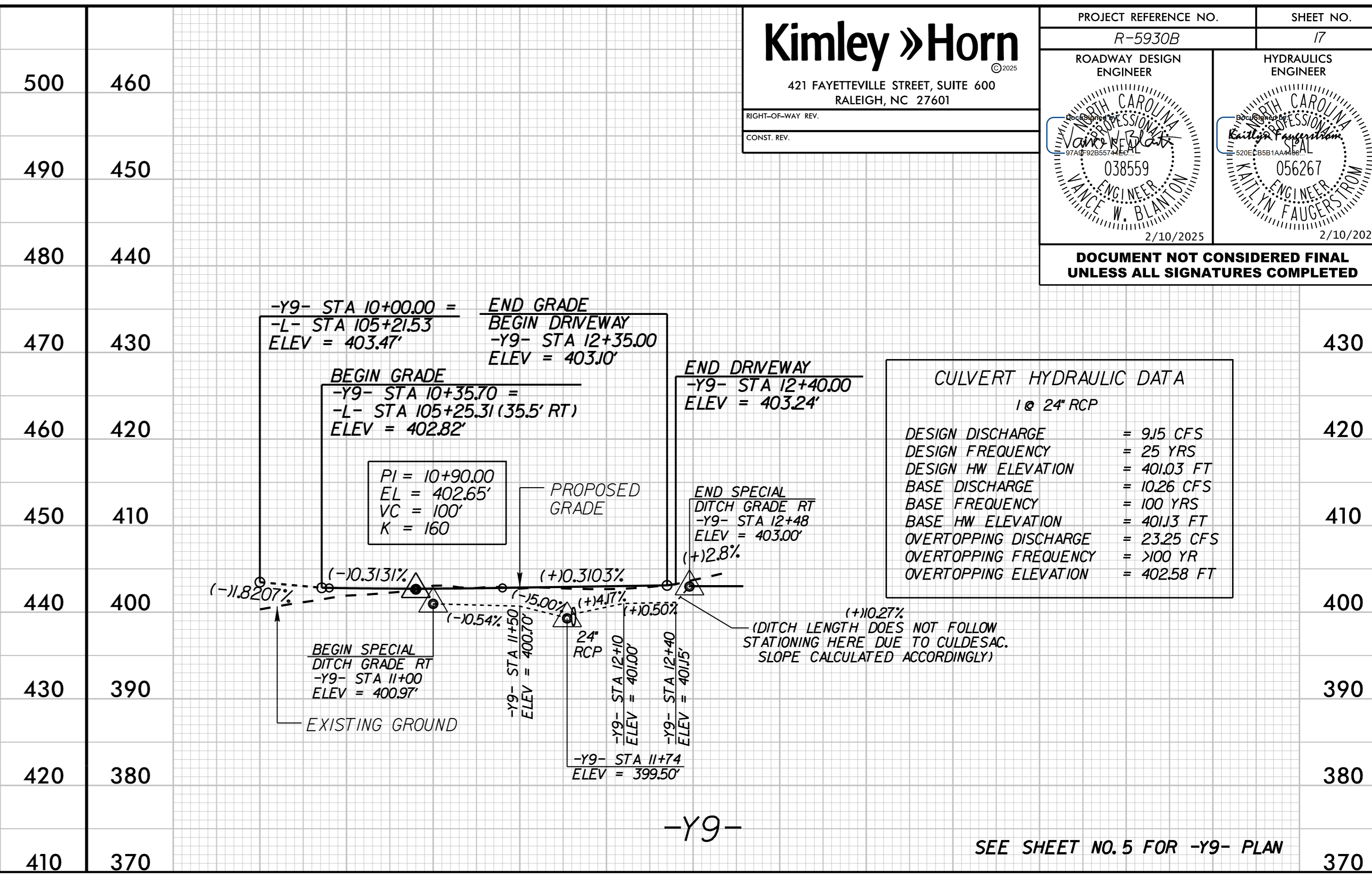
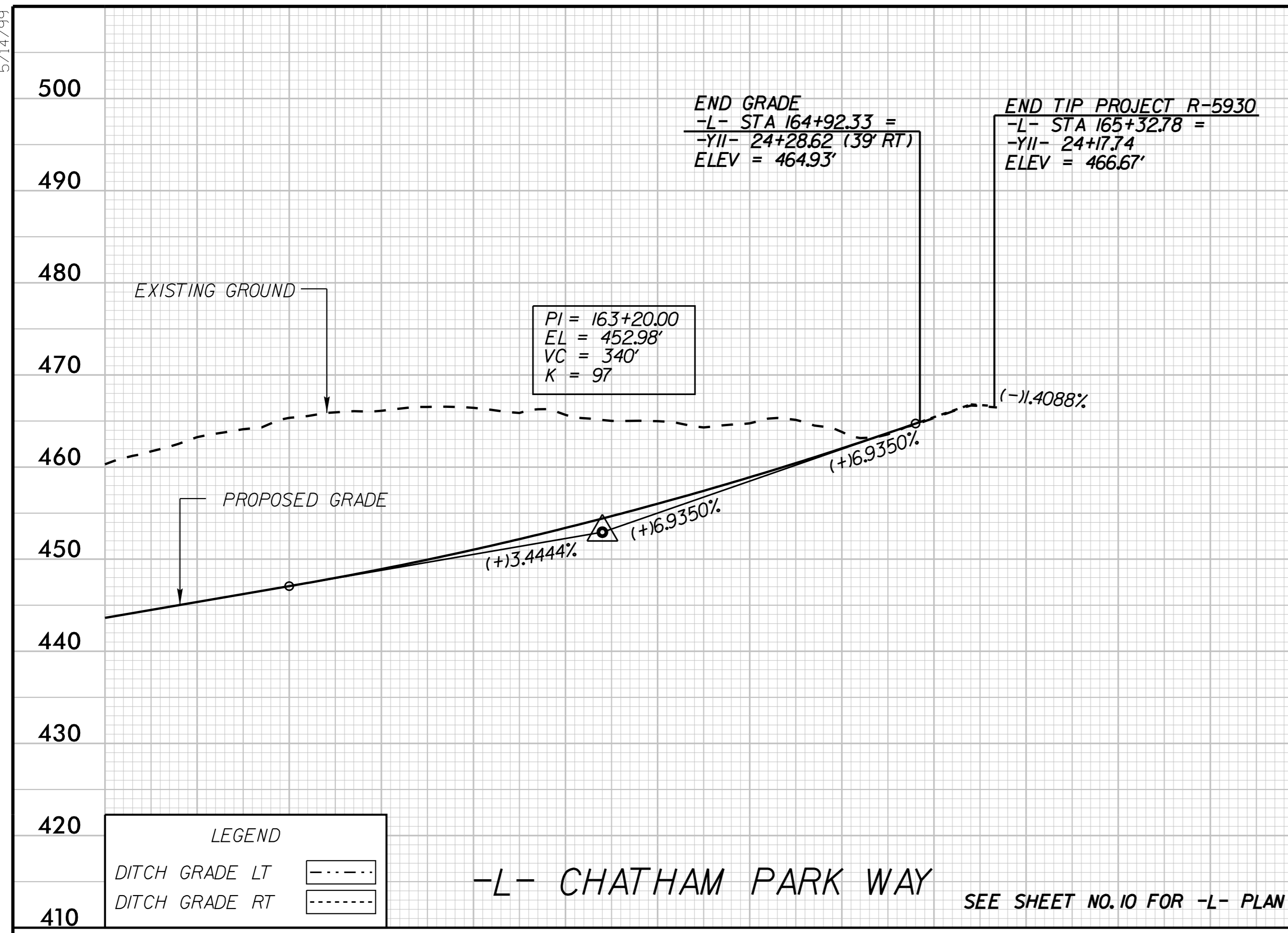
Kimley » Horn
 421 FAYETTEVILLE STREET, SUITE 600
 RALEIGH, NC 27601

PROJECT REFERENCE NO. R-5930B SHEET NO. 17

ROADWAY DESIGN ENGINEER HYDRAULICS ENGINEER

2/10/2025 2/10/2025

DOCUMENT NOT CONSIDERED FINAL UNLESS ALL SIGNATURES COMPLETED



K:\RAL_Roadway\01036532 - R-5930 North CPW\Roadway\Pro\R-5930B_rdy_pfl_r.dgn

1/3/2025

5/14/99

.....
 BM*9 ELEVATION = 464.40'
 N 733.956 E 1.952.454
 BY7 STATION 9+61.1, 24.2' LEFT
 Y11 STATION 25+89.39, 466.13' LEFT
 RAILROAD SPIKE IN 20' OAK

Kimley » Horn
 421 FAYETTEVILLE STREET, SUITE 600
 RALEIGH, NC 27601

PROJECT REFERENCE NO. <i>R-5930B</i>	SHEET NO. <i>18</i>
ROADWAY DESIGN ENGINEER <i>VANCE W. BLANTON</i>	HYDRAULICS ENGINEER <i>KATHY W. FAUGES</i>
038559 2/10/2025	056267 2/10/2025
DOCUMENT NOT CONSIDERED FINAL UNLESS ALL SIGNATURES COMPLETED	

510

500

490

480

470

460

450

440

430

LEGEND

DITCH GRADE LT	---
DITCH GRADE RT	----

*-Y11- 24+17.74 =
 -L- STA 165+32.78
 ELEV = 466.67'*

*END OVERLAY 15' OVERLAY GRADE
 -Y11- STA 32+20.00
 ELEV = 468.17'*

*END 15' OVERLAY GRADE
 BEGIN MILL TO KEY-IN
 -Y11- STA 31+70.00
 ELEV = 469.21'*

PROPOSED GRADE

EXISTING GROUND

-Y11- US 15-501

SEE SHEET NO. 11 FOR -Y11- PLAN

22

23

24

25

26

27

28

29

30

31

32

33

34

35

36

500

490

480

470

460

450

440

430

420

410

LEGEND

DITCH GRADE LT	---
DITCH GRADE RT	----

*BEGIN WIDENING
 -Y11- STA 37+95.00 (38' LT)
 ELEV = 462.31'*

*END WIDENING
 -Y11- STA 40+40.00 (57.47' LT)
 ELEV = 459.14'*

*END CONSTRUCTION
 -Y11- STA 40+80.00
 ELEV = 458.99'*

EXISTING GROUND

-Y11- US 15-501

SEE SHEET NO. 10 FOR -Y11- PLAN

36

37

38

39

40

41

42

43

44

45

K:\PAL_Roadway\01036532 - R-5930 North CPW Roadway\Pro\A-R-5930B_rdy_pl_18.dgn

1/3/2025