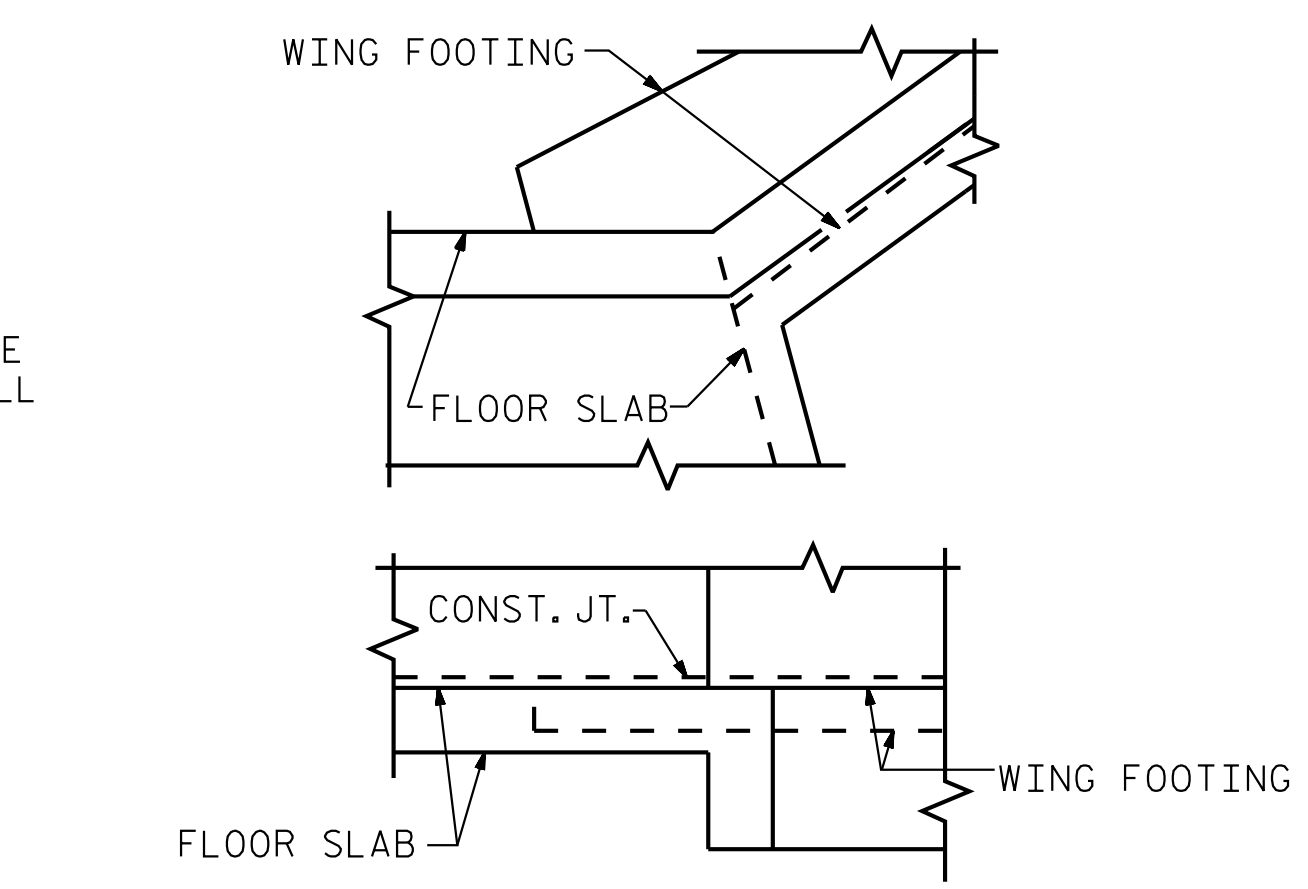
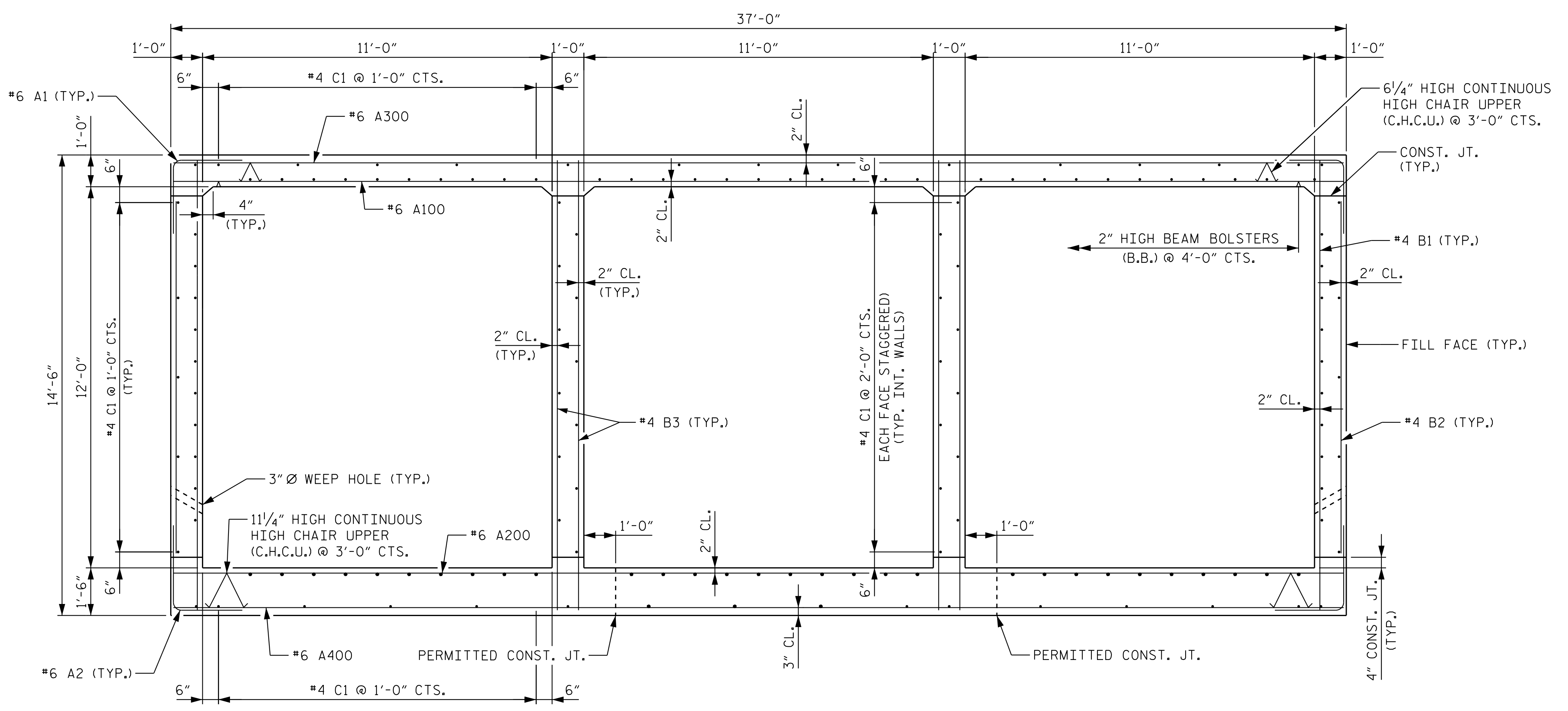


CULVERT SECTION NORMAL TO ROADWAY

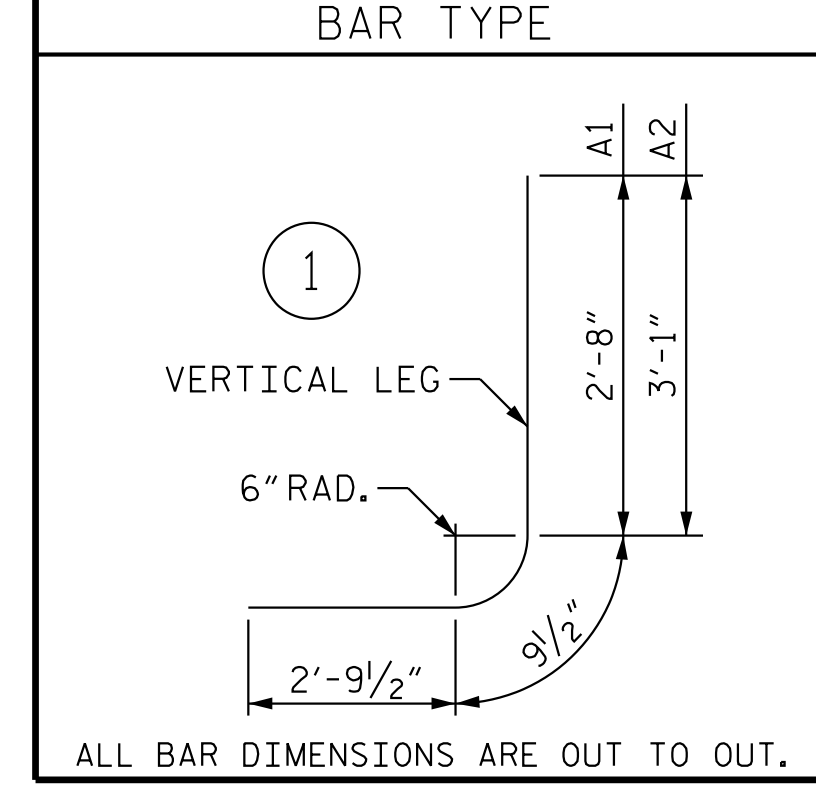


CONNECTION OF WING FOOTING AND FLOOR SLAB WHEN SLAB IS THICKER THAN FOOTING



RIGHT ANGLE SECTION OF BARREL  
THERE ARE 142 C1 BARS IN SECTION OF BARREL

BILL OF MATERIAL													
BAR	NO.	SIZE	TYPE	LENGTH	WEIGHT	BAR	NO.	SIZE	TYPE	LENGTH	WEIGHT		
A1	572	6	1	6'-3"	5,370	A300	266	6	STR	36'-8"	14,650		
A2	572	6	1	6'-8"	5,728	A301	2	6	STR	35'-5"	106		
						A302	2	6	STR	33'-5"	100		
A100	266	6	STR	36'-8"	14,650	A303	2	6	STR	31'-8"	95		
A101	2	6	STR	35'-5"	106	A304	2	6	STR	29'-9"	89		
A102	2	6	STR	33'-5"	100	A305	2	6	STR	27'-11"	84		
A103	2	6	STR	31'-8"	95	A306	2	6	STR	26'-1"	78		
A104	2	6	STR	29'-9"	89	A307	2	6	STR	24'-2"	73		
A105	2	6	STR	27'-11"	84	A308	2	6	STR	22'-4"	67		
A106	2	6	STR	26'-1"	78	A309	2	6	STR	20'-5"	61		
A107	2	6	STR	24'-2"	73	A310	2	6	STR	18'-7"	56		
A108	2	6	STR	22'-4"	67	A311	2	6	STR	16'-9"	50		
A109	2	6	STR	20'-5"	61	A312	2	6	STR	14'-10"	45		
A110	2	6	STR	18'-7"	56	A313	2	6	STR	13'-0"	39		
A111	2	6	STR	16'-9"	50	A314	2	6	STR	11'-1"	33		
A112	2	6	STR	14'-10"	45	A315	2	6	STR	9'-3"	28		
A113	2	6	STR	13'-0"	39	A316	2	6	STR	7'-5"	22		
A114	2	6	STR	11'-1"	33	A317	2	6	STR	5'-6"	17		
A115	2	6	STR	9'-3"	28	A318	2	6	STR	3'-8"	11		
A116	2	6	STR	7'-5"	22	A319	4	6	STR	1'-9"	11		
A117	2	6	STR	5'-6"	17								
A118	2	6	STR	3'-8"	11	A400	266	6	STR	35'-5"	14,650		
A119	4	6	STR	1'-9"	11	A401	2	6	STR	33'-5"	106		
						A402	2	6	STR	31'-8"	100		
A200	266	6	STR	36'-8"	14,650	A403	2	6	STR	29'-9"	89		
A201	2	6	STR	35'-5"	106	A404	2	6	STR	27'-11"	84		
A202	2	6	STR	33'-5"	100	A405	2	6	STR	27'-6"	84		
A203	2	6	STR	31'-8"	95	A406	2	6	STR	26'-1"	78		
A204	2	6	STR	29'-9"	89	A407	2	6	STR	24'-2"	73		
A205	2	6	STR	27'-11"	84	A408	2	6	STR	22'-4"	67		
A206	2	6	STR	26'-1"	78	A409	2	6	STR	20'-5"	61		
A207	2	6	STR	24'-2"	73	A410	2	6	STR	18'-7"	56		
A208	2	6	STR	22'-4"	67	A411	2	6	STR	16'-9"	50		
A209	2	6	STR	20'-5"	61	A412	2	6	STR	14'-10"	45		
A210	2	6	STR	18'-7"	56	A413	2	6	STR	13'-0"	39		
A211	2	6	STR	16'-9"	50	A414	2	6	STR	11'-1"	33		
A212	2	6	STR	14'-10"	45	A415	2	6	STR	9'-3"	28		
A213	2	6	STR	13'-0"	39	A416	2	6	STR	7'-5"	22		
A214	2	6	STR	11'-1"	33	A417	2	6	STR	5'-6"	17		
A215	2	6	STR	9'-3"	28	A418	2	6	STR	3'-8"	11		
A216	2	6	STR	7'-5"	22	A419	4	6	STR	1'-9"	11		
A217	2	6	STR	5'-6"	17								
A218	2	6	STR	3'-8"	11	B1	572	4	STR	14'-1"	5,381		
A219	4	6	STR	1'-9"	11	B2	572	4	STR	11'-3"	4,299		
						B3	572	4	STR	14'-1"	5,381		

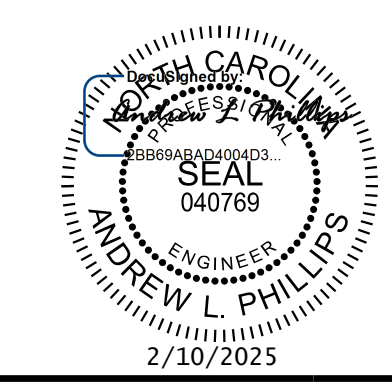


BAR TYPE	NO.	SIZE	TYPE	LENGTH	WEIGHT
C1	568	4	STR	37'-6"	14,228
D1	12	6	STR	3'-1"	56
G1	8	5	STR	37'-11"	316
S1	12	8	STR	37'-11"	1,215

REINFORCING STEEL		LBS.
#6 A200	2'-9"	
#6 A400	3'-7"	
#4 B1	1'-10"	
#4 C1	2'-5"	
		104,834

PROJECT NO. R-5930B  
CHATHAM COUNTY  
 STATION: 124+63.87 -L-

SHEET 3 OF 7



**Kimley»Horn**  
 421 Fayetteville Street, Suite 600  
 Raleigh, NC 27601-1772  
 Phone (919) 677-2000 NC LICENSE # F-0102

STATE OF NORTH CAROLINA  
 DEPARTMENT OF TRANSPORTATION  
 RALEIGH  
**TRIPLE 11 FT. X 12 FT. CONCRETE BOX CULVERT**  
 106° SKEW

REVISIONS						SHEET NO.
NO.	BY:	DATE:	NO.	BY:	DATE:	C4-3
1			3			TOTAL SHEETS
2			4			7

K:\ARDI\_Structures\Culvert\NC\01036532 - R-5930\_Nor-th\_CPM\ConDgn\A-R-5930B-413-003\_R5930B\_SMU\_CU03.dgn  
 10/23/2024

DRAWN BY: D. D. LOWERY DATE: 10/2023  
 CHECKED BY: B. M. KROLL DATE: 01/2024  
 DESIGN ENGINEER OF RECORD: A. L. PHILLIPS DATE: 03/2024

**DOCUMENT NOT CONSIDERED FINAL  
 UNLESS ALL SIGNATURES COMPLETED**

CULVERT 42C004