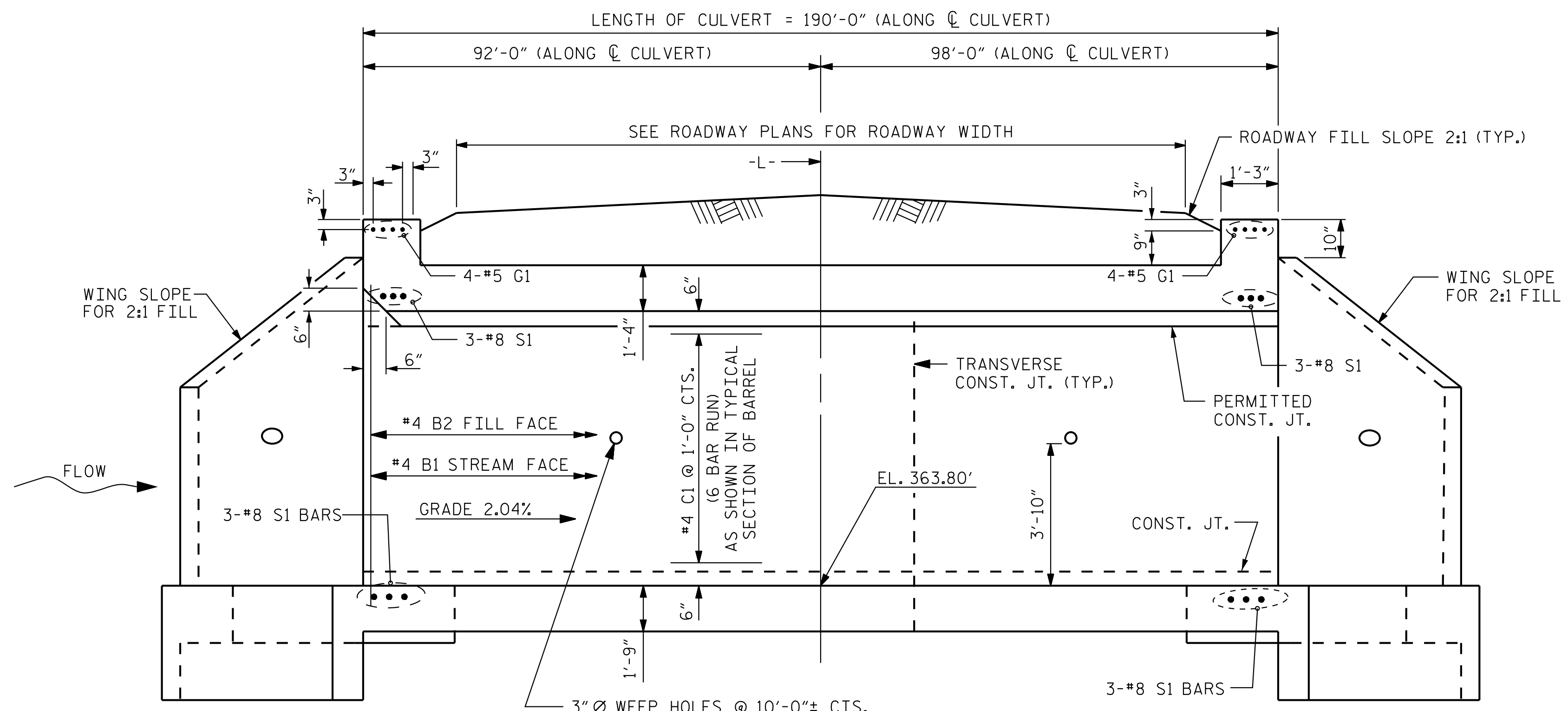
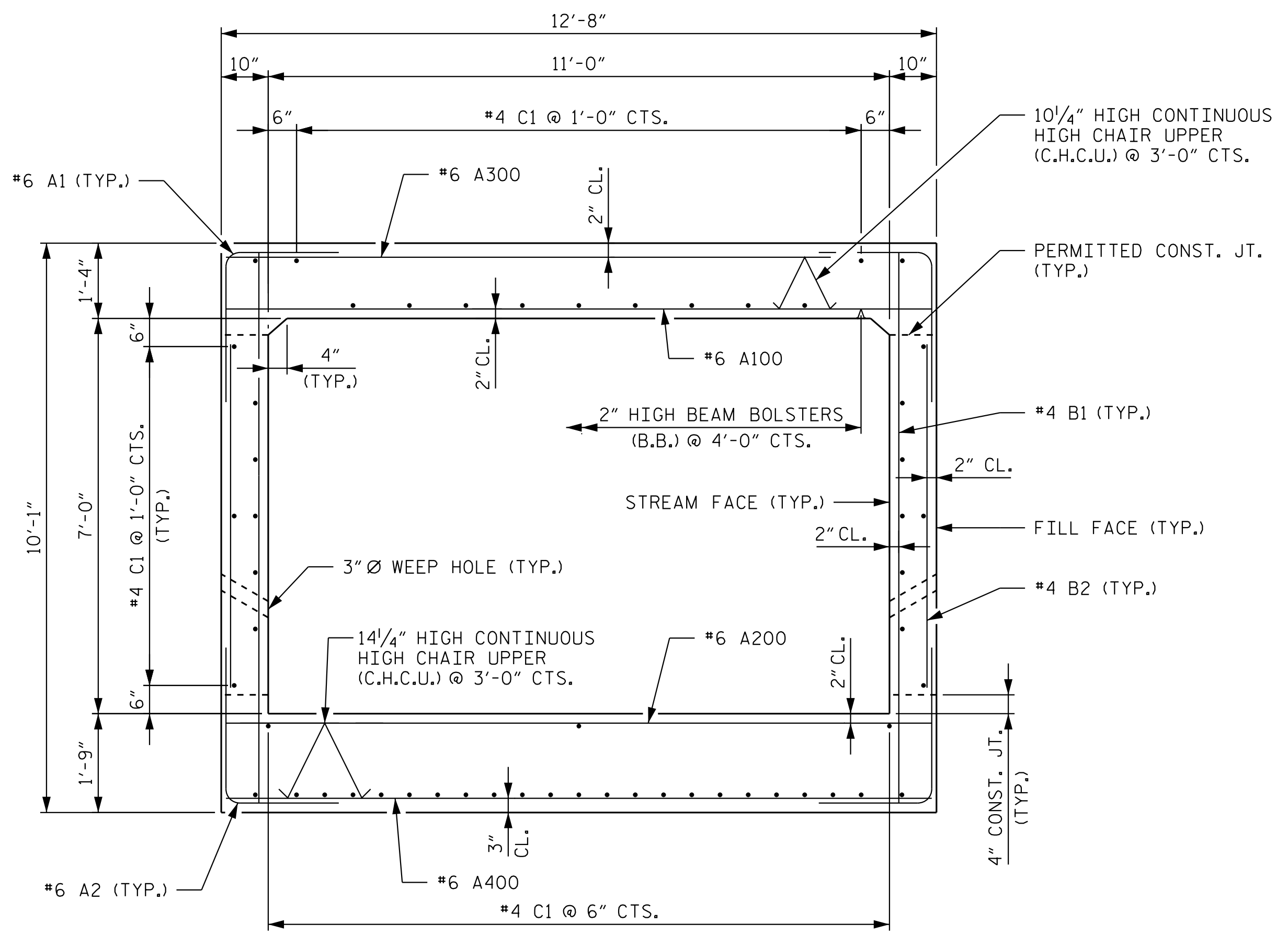


K:\BIDI_Structures\Culvert\A\NC\011036532 - R-5930 - Nor-th CPW\Cad\Drawn-R-5930B-412-003-R5930B_SML_C003.dgn



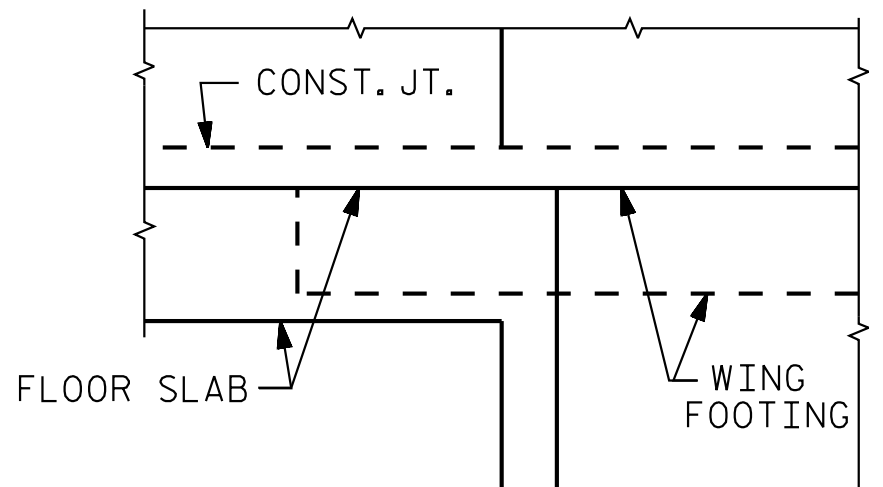
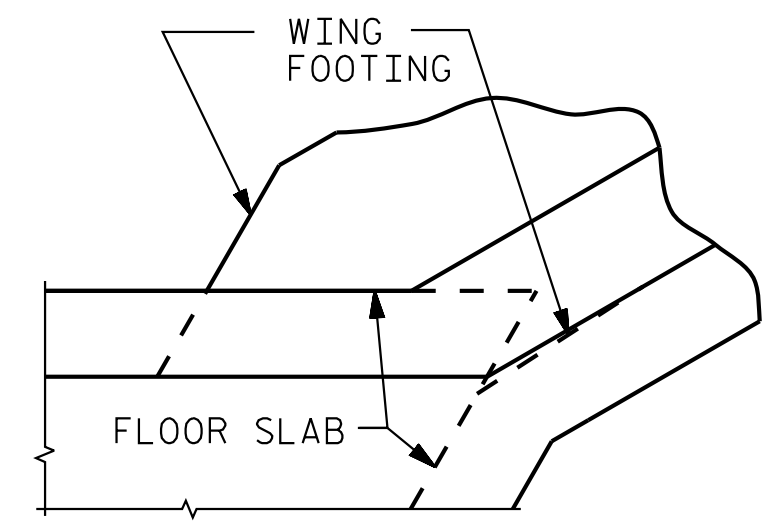
CULVERT SECTION NORMAL TO ROADWAY



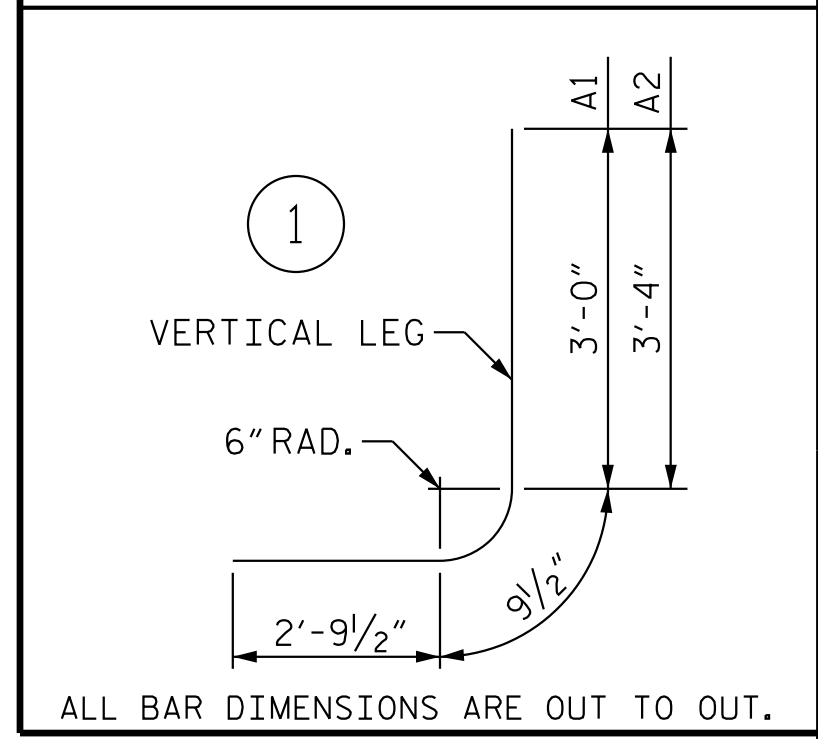
RIGHT ANGLE SECTION OF BARREL

THERE ARE 57 "C" BARS IN SECTION OF BARREL

BILL OF MATERIAL															
BAR	NO.	SIZE	TYPE	LENGTH	WEIGHT	BAR	NO.	SIZE	TYPE	LENGTH	WEIGHT				
A1	760	6	1	6'-7"	7,515	A300	366	6	STR	12'-4"	6,780				
A2	760	6	1	6'-11"	7,896	A301	2	6	STR	11'-5"	34				
						A302	2	6	STR	10'-6"	32				
A100	366	6	STR	12'-4"	6,780	A303	2	6	STR	9'-8"	29				
A101	2	6	STR	11'-5"	34	A304	2	6	STR	8'-10"	27				
A102	2	6	STR	10'-6"	32	A305	2	6	STR	8'-0"	24				
A103	2	6	STR	9'-8"	29	A306	2	6	STR	7'-1"	21				
A104	2	6	STR	8'-10"	27	A307	2	6	STR	6'-3"	19				
A105	2	6	STR	8'-0"	24	A308	2	6	STR	5'-4"	16				
A106	2	6	STR	7'-1"	21	A309	2	6	STR	4'-6"	14				
A107	2	6	STR	6'-3"	19	A310	2	6	STR	3'-8"	11				
A108	2	6	STR	5'-4"	16	A311	2	6	STR	2'-9"	8				
A109	2	6	STR	4'-6"	14	A312	6	6	STR	1'-11"	17				
A110	2	6	STR	3'-8"	11										
A111	2	6	STR	2'-9"	8	A400	366	6	STR	12'-4"	6,780				
A112	6	6	STR	1'-11"	17	A401	2	6	STR	11'-5"	34				
						A402	2	6	STR	10'-6"	32				
A200	366	6	STR	12'-4"	6,780	A403	2	6	STR	9'-8"	29				
A201	2	6	STR	11'-5"	34	A404	2	6	STR	8'-10"	27				
A202	2	6	STR	10'-6"	32	A405	2	6	STR	8'-0"	24				
A203	2	6	STR	9'-8"	29	A406	2	6	STR	7'-1"	21				
A204	2	6	STR	8'-10"	27	A407	2	6	STR	6'-3"	19				
A205	2	6	STR	8'-0"	24	A408	2	6	STR	5'-4"	16				
A206	2	6	STR	7'-1"	21	A409	2	6	STR	4'-6"	14				
A207	2	6	STR	6'-3"	19	A410	2	6	STR	3'-8"	11				
A208	2	6	STR	5'-4"	16	A411	2	6	STR	2'-9"	8				
A209	2	6	STR	4'-6"	14	A412	6	6	STR	1'-11"	17				
A210	2	6	STR	3'-8"	11										
A211	2	6	STR	2'-9"	8	B1	760	4	STR	9'-8"	4,908				
A212	6	6	STR	1'-11"	17	B2	760	4	STR	6'-4"	3,215				
						C1	342	4	STR	33'-8"	7,691				
						D1	54	6	STR	2'-4"	189				
						G1	8	5	STR	14'-3"	119				
						S1	12	8	STR	14'-3"	457				
REINFORCING STEEL LBS.												60,118			
BAR TYPE															

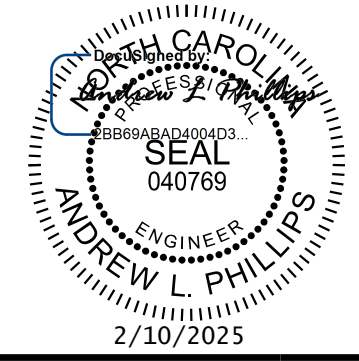


CONNECTION OF WING FOOTING AND FLOOR SLAB WHEN SLAB IS THICKER THAN FOOTING



ALL BAR DIMENSIONS ARE OUT TO OUT.

BAR SIZE	SPLICE LENGTH
#4 B1	1'-10"
#4 C1	2'-5"



Kimley»Horn
 421 Fayetteville Street, Suite 600
 Raleigh, NC 27601-1772
 Phone (919) 677-2000 NC LICENSE # F-0102

PROJECT NO. R-5930B
CHATHAM COUNTY
 STATION: 108+98.22 -L-

SHEET 3 OF 6
 STATE OF NORTH CAROLINA
 DEPARTMENT OF TRANSPORTATION
 RALEIGH
 SINGLE 11 FT. X 7 FT.
 CONCRETE BOX CULVERT
 60° SKEW

DRAWN BY: D. D. LOWERY DATE: 10/2023
 CHECKED BY: C. I. POOLE DATE: 01/2024
 DESIGN ENGINEER OF RECORD: A. L. PHILLIPS DATE: 03/2024

**DOCUMENT NOT CONSIDERED FINAL
UNLESS ALL SIGNATURES COMPLETED**

REVISIONS						SHEET NO.
NO.	BY:	DATE:	NO.	BY:	DATE:	C3-3
1			3			TOTAL SHEETS
2			4			6