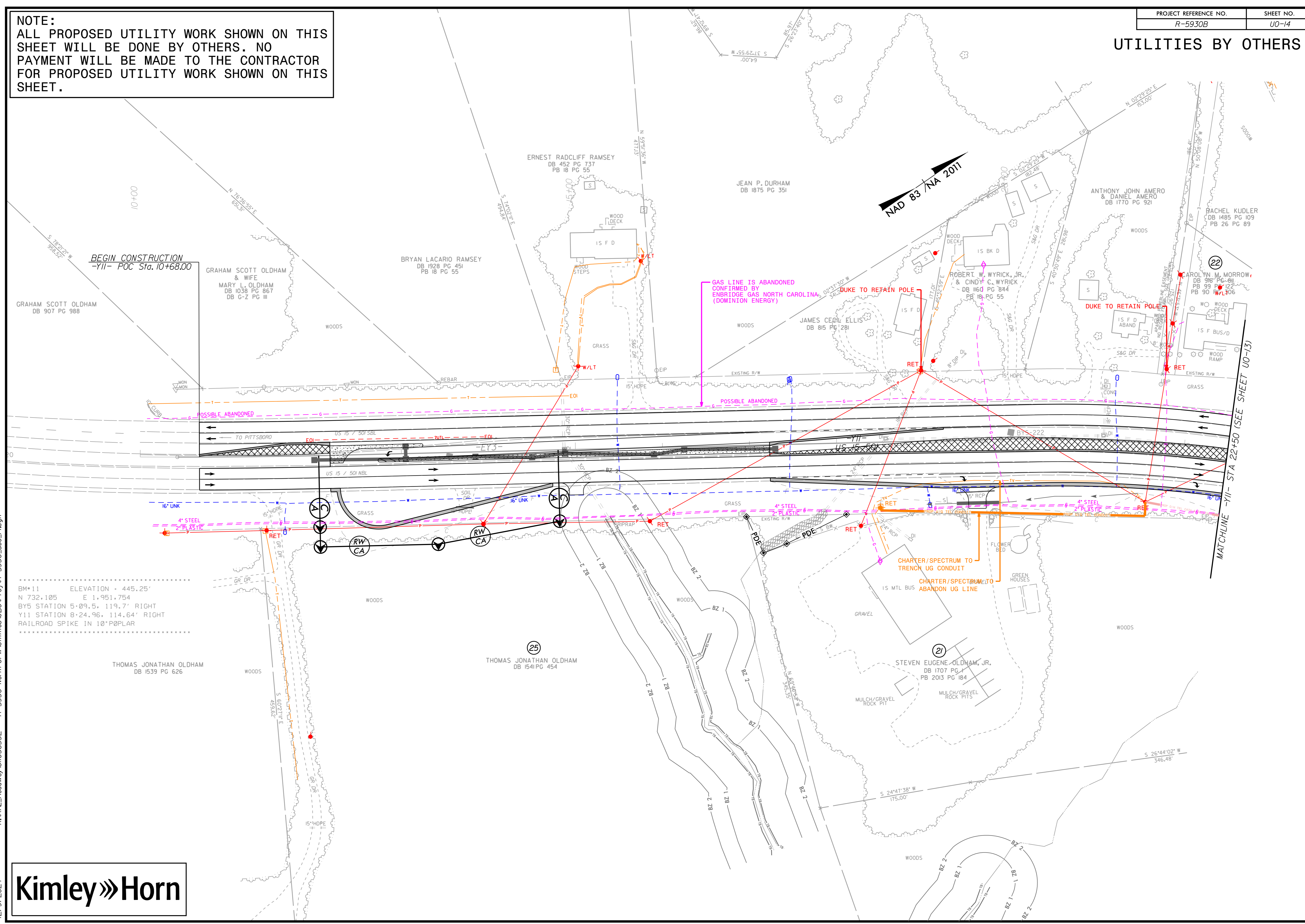


UTILITIES BY OTHERS

NOTE:
ALL PROPOSED UTILITY WORK SHOWN ON THIS SHEET WILL BE DONE BY OTHERS. NO PAYMENT WILL BE MADE TO THE CONTRACTOR FOR PROPOSED UTILITY WORK SHOWN ON THIS SHEET.



BM*11 ELEVATION = 445.25'
N 732.105 E 1.951.754
BY5 STATION 5+09.5, 119.7' RIGHT
Y11 STATION 8+24.96, 114.64' RIGHT
RAILROAD SPIKE IN 10' POPLAR



K:\RAL_Roadway\01036532 - R-5930 North CPW Utilities\BOP\Proj\R-5930_u0-14.dgn
12/9/2024

MATCHLINE -Y11- STA 22+50 (SEE SHEET U0-13)