

MAXTIME ALTERNATE PHASING ACTIVATION DETAIL

To run alternate phasing, select a Pattern that is programmed to run Overlap Plan 2 and Detector Plan 2.
A Pattern can be selected through the scheduler or manually by changing the Operational Mode.

<u>PHASING</u>	<u>OVERLAP PLAN</u>	<u>VEH DET PLAN</u>
ACTIVE PLAN REQUIRED TO RUN DEFAULT PHASING	1	1
ACTIVE PLAN REQUIRED TO RUN ALTERNATE PHASING	2	2

ALTERNATE PHASING CHANGE SUMMARY

THE FOLLOWING IS A SUMMARY OF WHAT TAKES PLACE WHEN
OVERLAP PLAN 2 AND VEHICLE DETECTOR PLAN 2 ACTIVATE
TO CALL THE "ALTERNATE PHASING":

OVERLAP PLAN 2: Modifies overlap included phases
for heads 11 and 51 to
run protected turns only.

VEH DET PLAN 2: Disables phase 6 call on loop 1A
and reduces delay time for phase 1
call on loop 1A to 0 seconds.

Disables phase 2 call on loop 5A
and reduces delay time for phase 5
call on loop 5A to 0 seconds.

MAXTIME ALTERNATE PHASING PATTERN PROGRAMMING DETAIL

Front Panel
Main Menu >Controller >Coordination >Patterns

Web Interface
Home >Controller >Coordination >Patterns

Pattern Parameters

Pattern	Veh Det Plan	Overlap Plan
*	2	2

* The Pattern number(s) are to be determined by
the Division and/or City Traffic Engineer.

THIS ELECTRICAL DETAIL IS FOR
THE SIGNAL DESIGN:
DESIGNED: April 2024
SEALED: 12/12/2024
REVISED: N/A

Electrical Detail - Sheet 3 of 3

**DOCUMENT NOT CONSIDERED
FINAL UNLESS ALL
SIGNATURES COMPLETED**

ELECTRICAL AND PROGRAMMING
DETAILS FOR:

SR 2700 (Chatham Park Way)
at

**Grant Drive and
Asteria Boulevard**

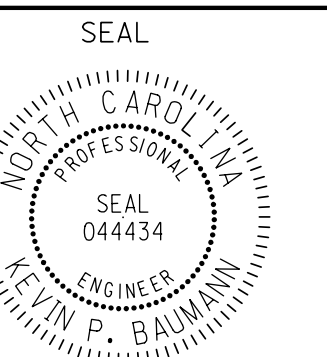
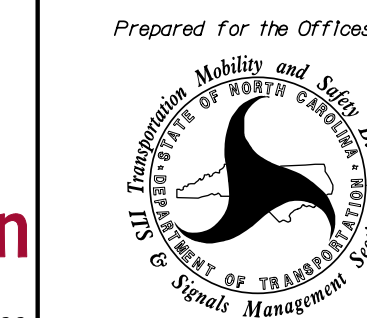
Division 8 Chatham County Pittsboro

PLAN DATE: April 2024 REVIEWED BY: KP Baumann

PREPARED BY: SP Pennington REVIEWED BY:

REVISIONS	INIT.	DATE

PLANS PREPARED IN THE OFFICE OF:
Kimley»Horn
NC License #F-0102
421 Fayetteville Street, Suite 600
Raleigh, NC 27601
(919) 677-2000



Designed by: *Kevin P. Baumann* 12/12/2024
DATE

SIG. INVENTORY NO. 08-0521