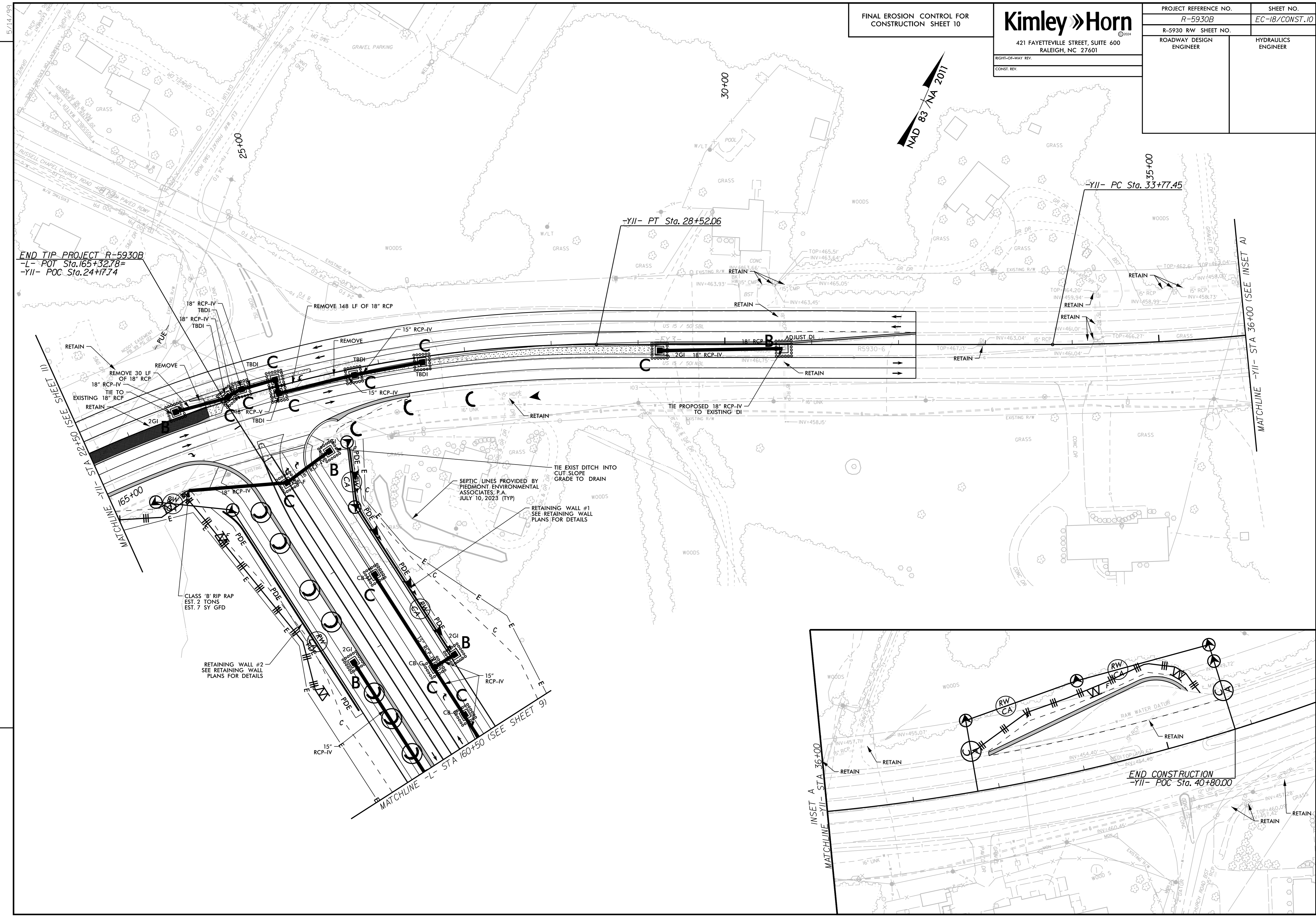
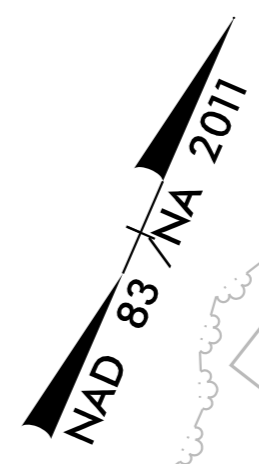


5/14/99

FINAL EROSION CONTROL FOR CONSTRUCTION SHEET 10

PROJECT REFERENCE NO. <i>R-5930B</i>		SHEET NO. <i>EC-18/CONST.10</i>	
R-5930 RW SHEET NO.		ROADWAY DESIGN ENGINEER	
421 FAYETTEVILLE STREET, SUITE 600 RALEIGH, NC 27601		HYDRAULICS ENGINEER	
RIGHT-OF-WAY REV.		CONST. REV.	



REVISIONS

END TIP PROJECT R-5930B
 -L- POT Sta. 165+32.78=
 -YII- POC Sta. 24+77.74

-YII- PT Sta. 28+52.06

-YII- PC Sta. 33+77.45

MATCHLINE -YII- STA 36+00 (SEE INSET A)

MATCHLINE -YII- STA 165+00 (SEE SHEET 9)

REMOVE 148 LF OF 18\"/>

CLASS 'B' RIP RAP
 EST. 2 TONS
 EST. 7 SY GFD

RETAINING WALL #2
 SEE RETAINING WALL
 PLANS FOR DETAILS

SEPTIC LINES PROVIDED BY
 PIEDMONT ENVIRONMENTAL
 ASSOCIATES, P.A.
 JULY 10, 2023 (TYP)

TIE EXIST DITCH INTO
 CUT-SLOPE
 GRADE TO DRAIN

RETAINING WALL #1
 SEE RETAINING WALL
 PLANS FOR DETAILS

