

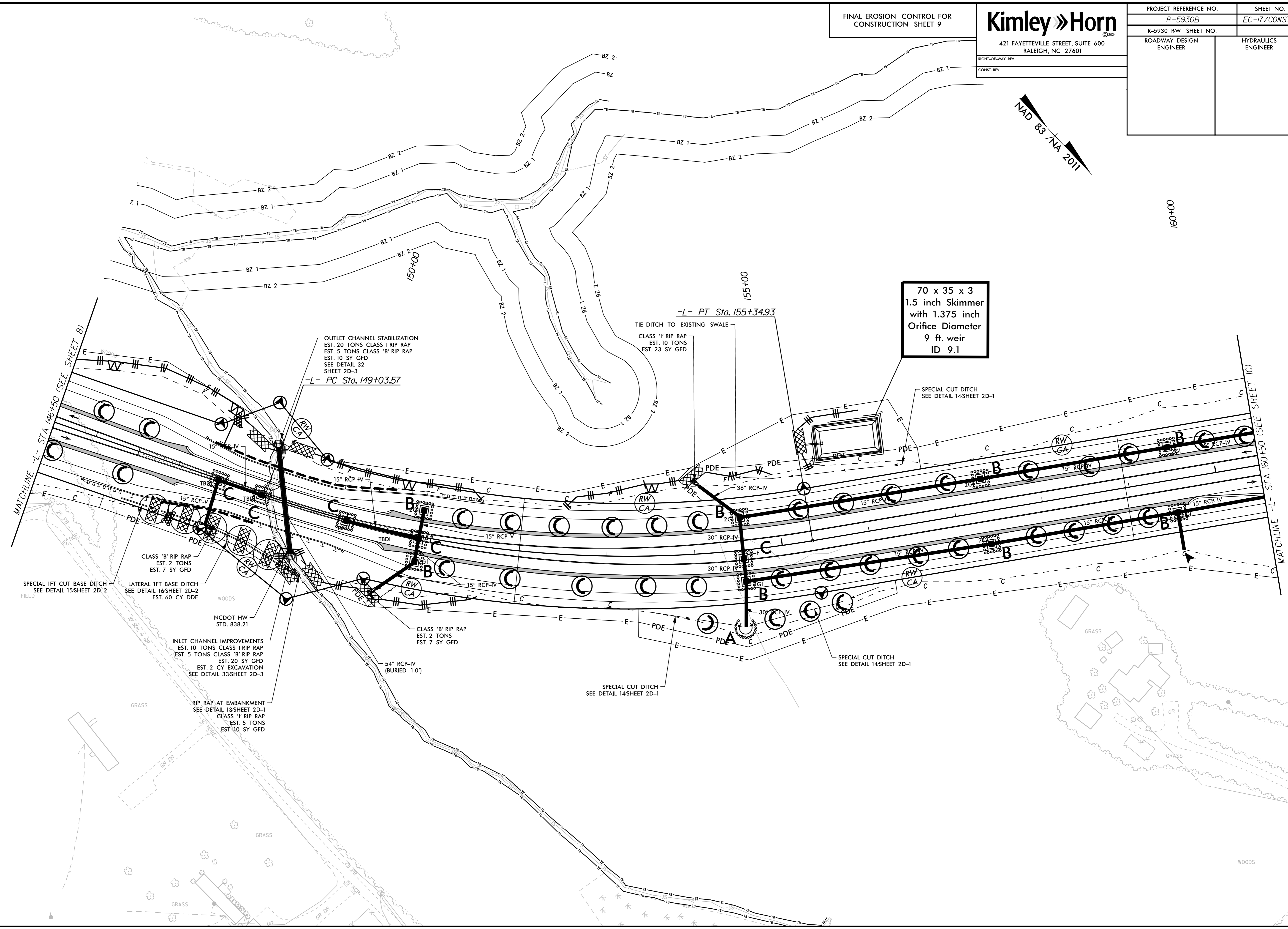
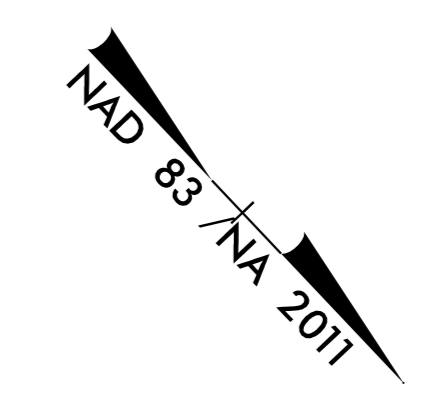
5/14/99

FINAL EROSION CONTROL FOR
CONSTRUCTION SHEET 9

Kimley » Horn
 421 FAYETTEVILLE STREET, SUITE 600
 RALEIGH, NC 27601

RIGHT-OF-WAY REV.
 CONST. REV.

PROJECT REFERENCE NO. R-5930B	SHEET NO. EC-17/CONST. 9
R-5930 RW SHEET NO.	HYDRAULICS ENGINEER
ROADWAY DESIGN ENGINEER	



**70 x 35 x 3
 1.5 inch Skimmer
 with 1.375 inch
 Orifice Diameter
 9 ft. weir
 ID 9.1**

OUTLET CHANNEL STABILIZATION
 EST. 20 TONS CLASS I RIP RAP
 EST. 5 TONS CLASS 'B' RIP RAP
 EST. 10 SY GFD
 SEE DETAIL 32
 SHEET 2D-3
 -L- PC Sta. 149+03.57

-L- PT Sta. 155+34.93
 TIE DITCH TO EXISTING SWALE
 CLASS 'I' RIP RAP
 EST. 10 TONS
 EST. 23 SY GFD

SPECIAL 1FT CUT BASE DITCH
 SEE DETAIL 15/SHEET 2D-2

LATERAL 1FT BASE DITCH
 SEE DETAIL 16/SHEET 2D-2
 EST. 60 CY DDE

INLET CHANNEL IMPROVEMENTS
 EST. 10 TONS CLASS I RIP RAP
 EST. 5 TONS CLASS 'B' RIP RAP
 EST. 20 SY GFD
 EST. 2 CY EXCAVATION
 SEE DETAIL 33/SHEET 2D-3

GRASS
 RIP RAP AT EMBANKMENT
 SEE DETAIL 13/SHEET 2D-1
 CLASS 'I' RIP RAP
 EST. 5 TONS
 EST. 10 SY GFD

CLASS 'B' RIP RAP
 EST. 2 TONS
 EST. 7 SY GFD

SPECIAL CUT DITCH
 SEE DETAIL 14/SHEET 2D-1

SPECIAL CUT DITCH
 SEE DETAIL 14/SHEET 2D-1

REVISIONS

WOODS