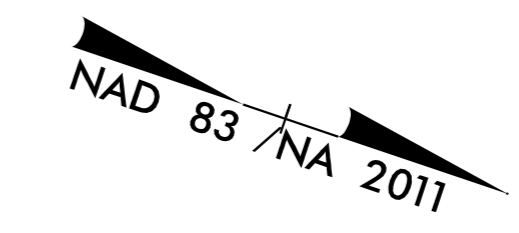


5/14/99

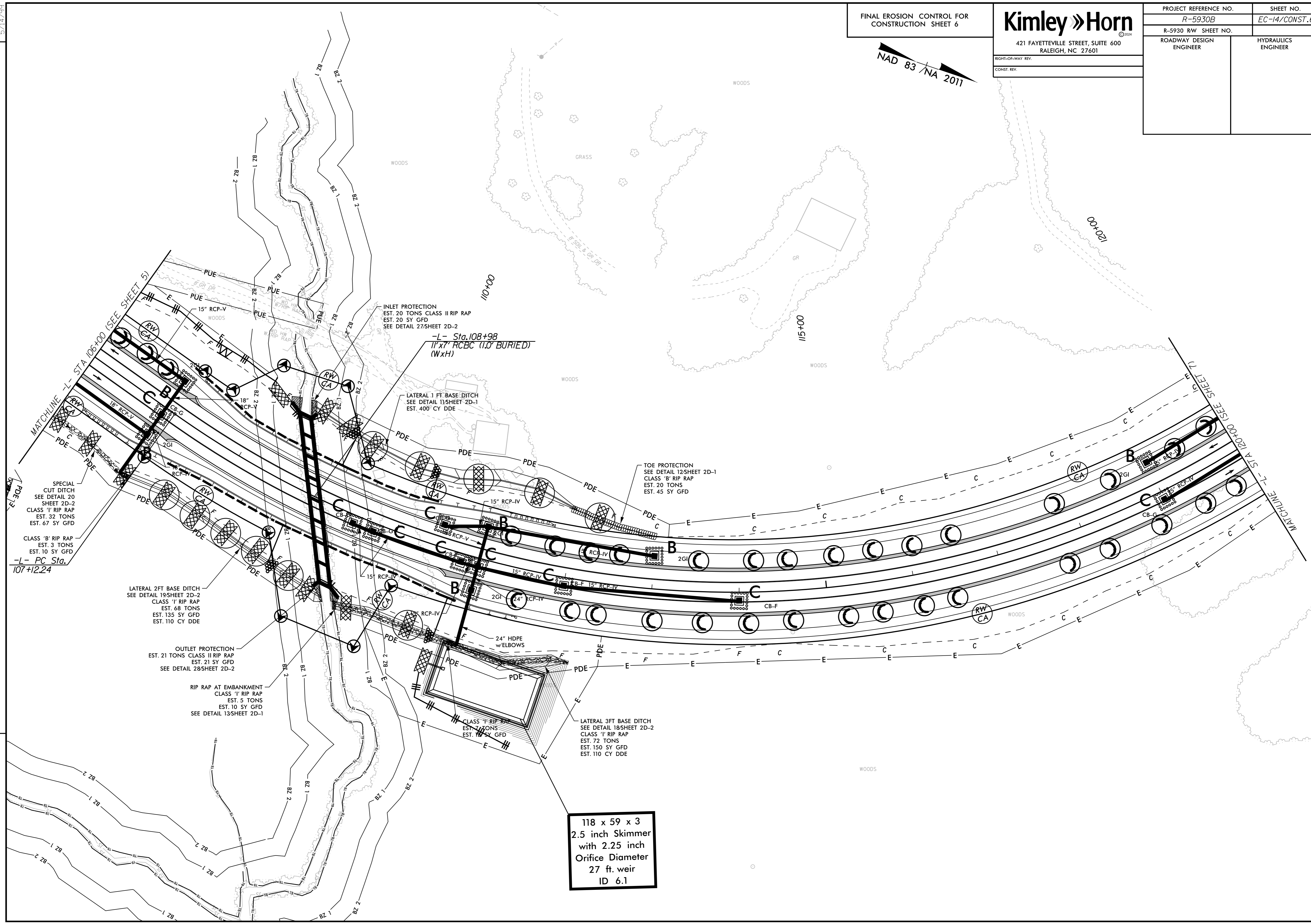
FINAL EROSION CONTROL FOR
CONSTRUCTION SHEET 6

PROJECT REFERENCE NO. R-5930B		SHEET NO. EC-14/CONST.6	
R-5930 RW SHEET NO.		ROADWAY DESIGN ENGINEER	
ROADWAY DESIGN ENGINEER		HYDRAULICS ENGINEER	
CONST. REV.		CONST. REV.	

Kimley Horn
 421 FAYETTEVILLE STREET, SUITE 600
 RALEIGH, NC 27601



REVISIONS



SPECIAL CUT DITCH
SEE DETAIL 20
SHEET 2D-2
CLASS '1' RIP RAP
EST. 32 TONS
EST. 67 SY GFD

CLASS 'B' RIP RAP
EST. 3 TONS
EST. 10 SY GFD

-L- PC Sta.
107+12.24

LATERAL 2FT BASE DITCH
SEE DETAIL 19/SHEET 2D-2
CLASS '1' RIP RAP
EST. 68 TONS
EST. 135 SY GFD
EST. 110 CY DDE

OUTLET PROTECTION
EST. 21 TONS CLASS II RIP RAP
EST. 21 SY GFD
SEE DETAIL 28/SHEET 2D-2

RIP RAP AT EMBANKMENT
CLASS '1' RIP RAP
EST. 5 TONS
EST. 10 SY GFD
SEE DETAIL 13/SHEET 2D-1

INLET PROTECTION
EST. 20 TONS CLASS II RIP RAP
EST. 20 SY GFD
SEE DETAIL 27/SHEET 2D-2

-L- Sta. 108+98
11'x7' RCBC (1.0' BURIED)
(WxH)

LATERAL 1 FT. BASE DITCH
SEE DETAIL 11/SHEET 2D-1
EST. 400' CY DDE

TOE PROTECTION
SEE DETAIL 12/SHEET 2D-1
CLASS 'B' RIP RAP
EST. 20 TONS
EST. 45 SY GFD

CLASS '1' RIP RAP
EST. 14 TONS
EST. 10 SY GFD

LATERAL 3FT BASE DITCH
SEE DETAIL 18/SHEET 2D-2
CLASS '1' RIP RAP
EST. 72 TONS
EST. 150 SY GFD
EST. 110 CY DDE

118 x 59 x 3
2.5 inch Skimmer
with 2.25 inch
Orifice Diameter
27 ft. weir
ID 6.1

100+00 105+00 110+00 115+00 120+00