

5/14/99

NOTE:
PLACE TEMPORARY ROCK SEDIMENT DAMS TYPE - B
AND TEMPORARY ROCK SILT CHECKS TYPE - A AT
DRAINAGE OUTLETS.

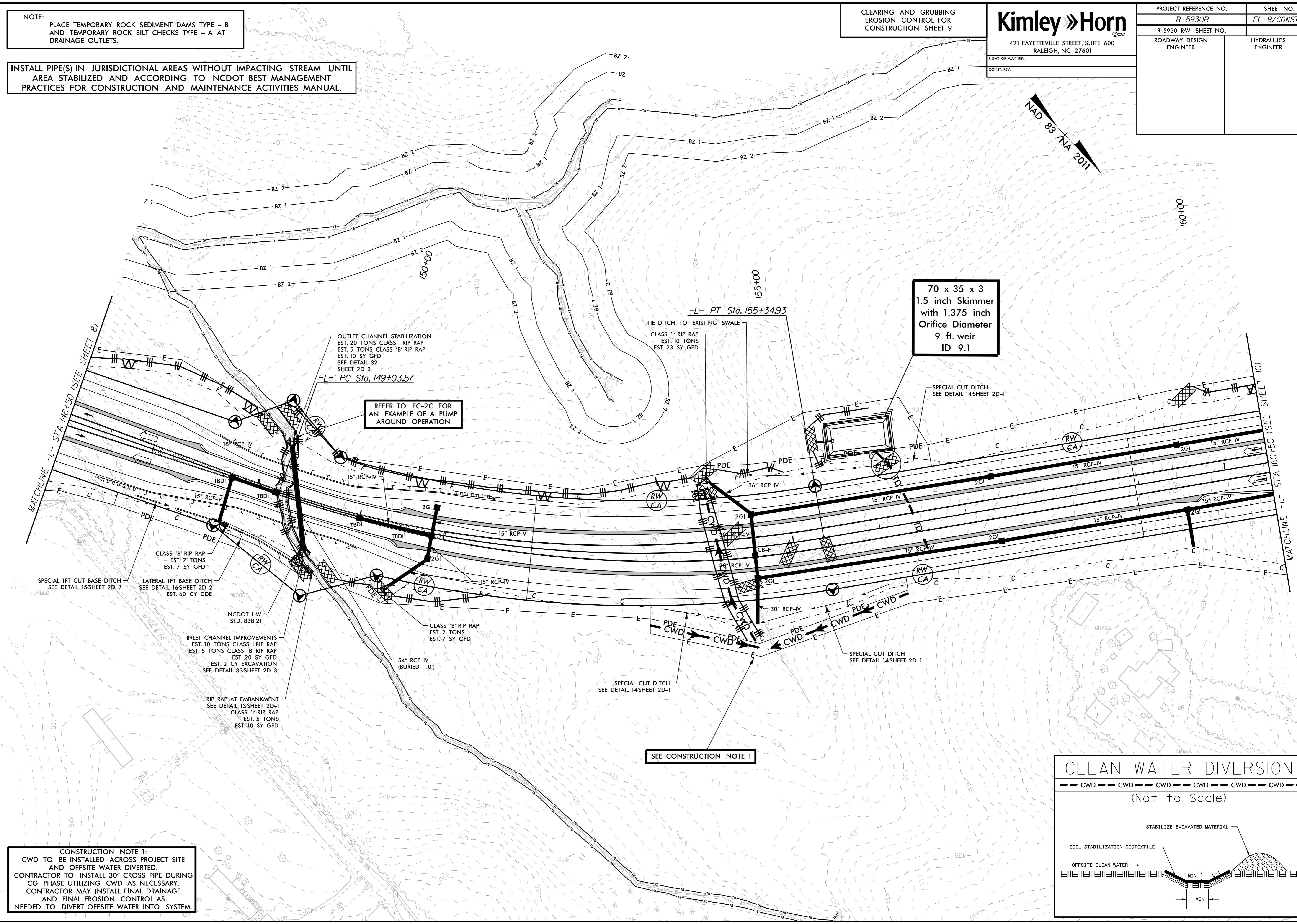
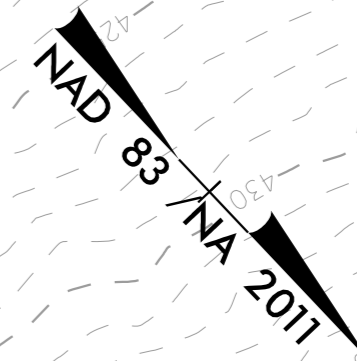
INSTALL PIPE(S) IN JURISDICTIONAL AREAS WITHOUT IMPACTING STREAM UNTIL
AREA STABILIZED AND ACCORDING TO NCDOT BEST MANAGEMENT
PRACTICES FOR CONSTRUCTION AND MAINTENANCE ACTIVITIES MANUAL.

CLEARING AND GRUBBING
EROSION CONTROL FOR
CONSTRUCTION SHEET 9

Kimley Horn
421 FAYETTEVILLE STREET, SUITE 600
RALEIGH, NC 27601

PROJECT REFERENCE NO. R-5930B	SHEET NO. EC-9/CONST.9
R-5930 RW SHEET NO.	ROADWAY DESIGN ENGINEER
ROADWAY DESIGN ENGINEER	HYDRAULICS ENGINEER

RIGHT-OF-WAY REV.
CONST. REV.



70 x 35 x 3
1.5 inch Skimmer
with 1.375 inch
Orifice Diameter
9 ft. weir
ID 9.1

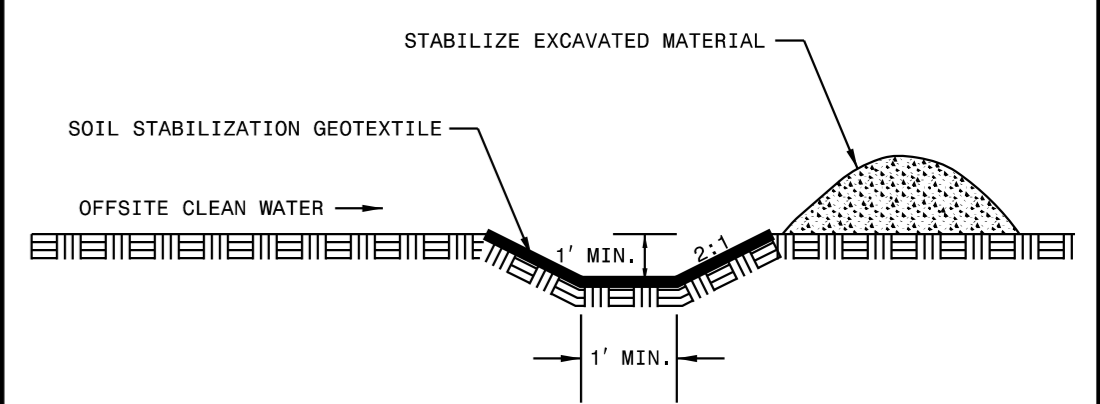
REFER TO EC-2C FOR
AN EXAMPLE OF A PUMP
AROUND OPERATION

SEE CONSTRUCTION NOTE 1

CONSTRUCTION NOTE 1:
CWD TO BE INSTALLED ACROSS PROJECT SITE
AND OFFSITE WATER DIVERTED.
CONTRACTOR TO INSTALL 30" CROSS PIPE DURING
CG PHASE UTILIZING CWD AS NECESSARY.
CONTRACTOR MAY INSTALL FINAL DRAINAGE
AND FINAL EROSION CONTROL AS
NEEDED TO DIVERT OFFSITE WATER INTO SYSTEM.

CLEAN WATER DIVERSION

--- CWD --- CWD --- CWD --- CWD --- CWD --- CWD --- CWD --- CWD ---
(Not to Scale)



REVISIONS