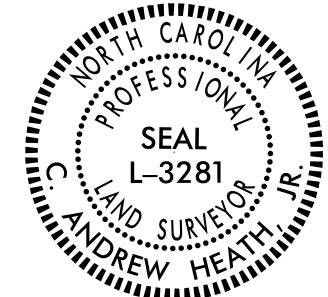


Location and Surveys

NIV5

NIV5 ENGINEERS & CONSULTANTS, INC.  
 3300 REGENCY PARKWAY, SUITE 100  
 CARY, NC 27518  
 P: 919.851.1912 www.NIV5.com  
 NC License # 4282 Formerly C&S Engineers & Consultants

PROJECT SURVEYOR

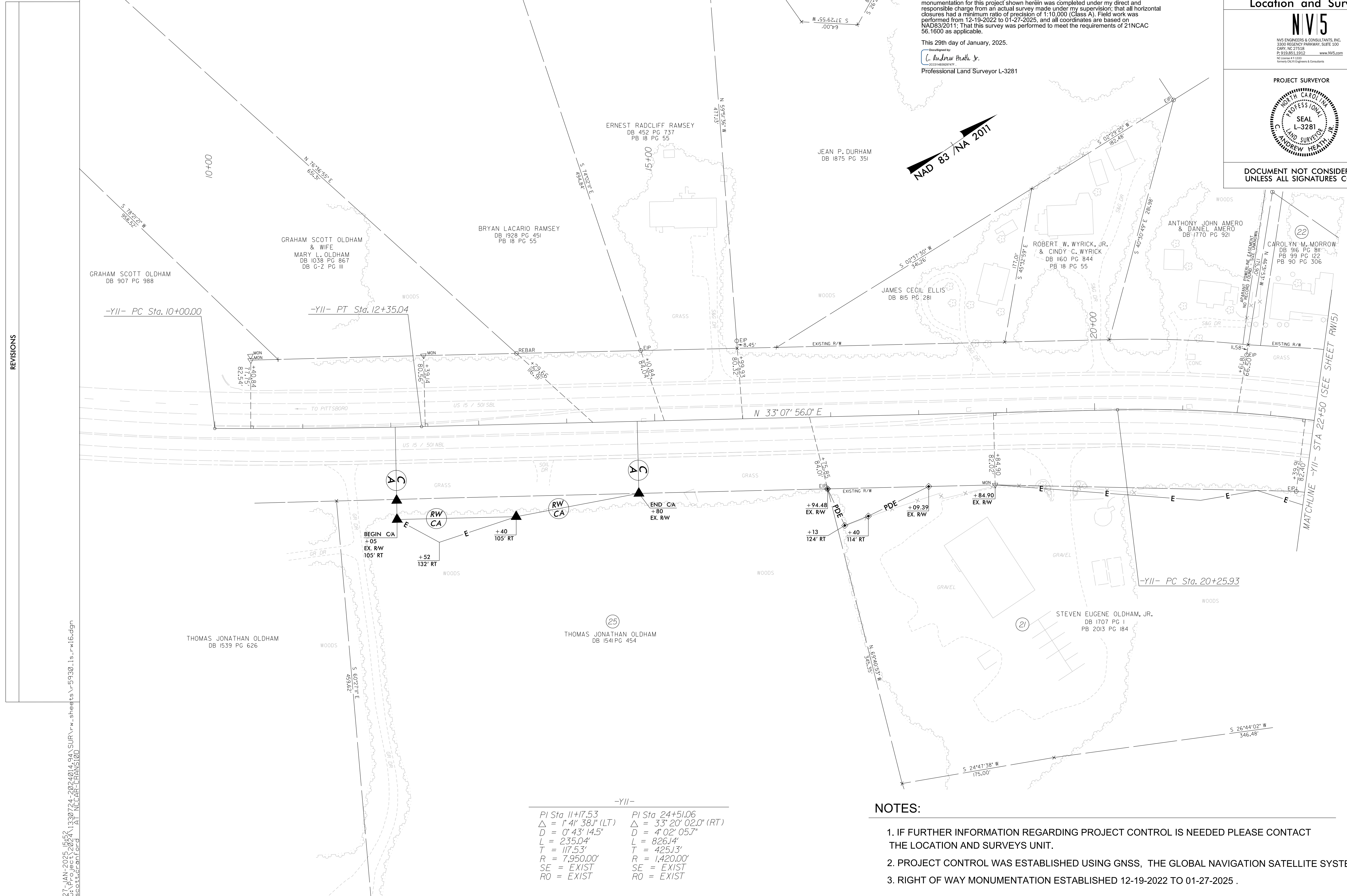
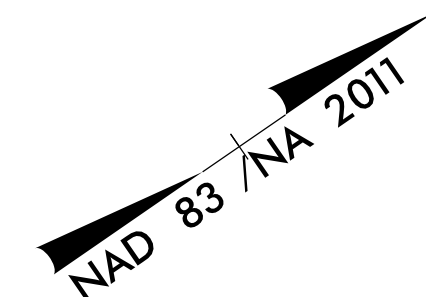


DOCUMENT NOT CONSIDERED FINAL UNLESS ALL SIGNATURES COMPLETED

I, C. Andrew Heath, Jr., certify that the right of way and permanent easement monumentation for this project shown herein was completed under my direct and responsible charge from an actual survey made under my supervision; that all horizontal closures had a minimum ratio of precision of 1:10,000 (Class A). Field work was performed from 12-19-2022 to 01-27-2025, and all coordinates are based on NAD83/2011; That this survey was performed to meet the requirements of 21NCAC 56.1600 as applicable.

This 29th day of January, 2025.

Designed by:  
 I. C. Andrew Heath, Jr.  
 Professional Land Surveyor L-3281



REVISIONS

07 JAN 2025 15:52 C:\330724-2024014 94\SUR\16.rw.sheets\5930\_16.rw16.dgn  
 AT NCCAF-CRANS100 scott.scott@niv5.com

-YII-

PI Sta 11+17.53	PI Sta 24+51.06
Δ = 1° 41' 38.1" (LT)	Δ = 33° 20' 02.0" (RT)
D = 0° 43' 14.5"	D = 4° 02' 05.7"
L = 235.04'	L = 826.14'
T = 117.53'	T = 425.13'
R = 7,950.00'	R = 1,420.00'
SE = EXIST	SE = EXIST
RO = EXIST	RO = EXIST

NOTES:

1. IF FURTHER INFORMATION REGARDING PROJECT CONTROL IS NEEDED PLEASE CONTACT THE LOCATION AND SURVEYS UNIT.
2. PROJECT CONTROL WAS ESTABLISHED USING GNSS, THE GLOBAL NAVIGATION SATELLITE SYSTEM.
3. RIGHT OF WAY MONUMENTATION ESTABLISHED 12-19-2022 TO 01-27-2025 .