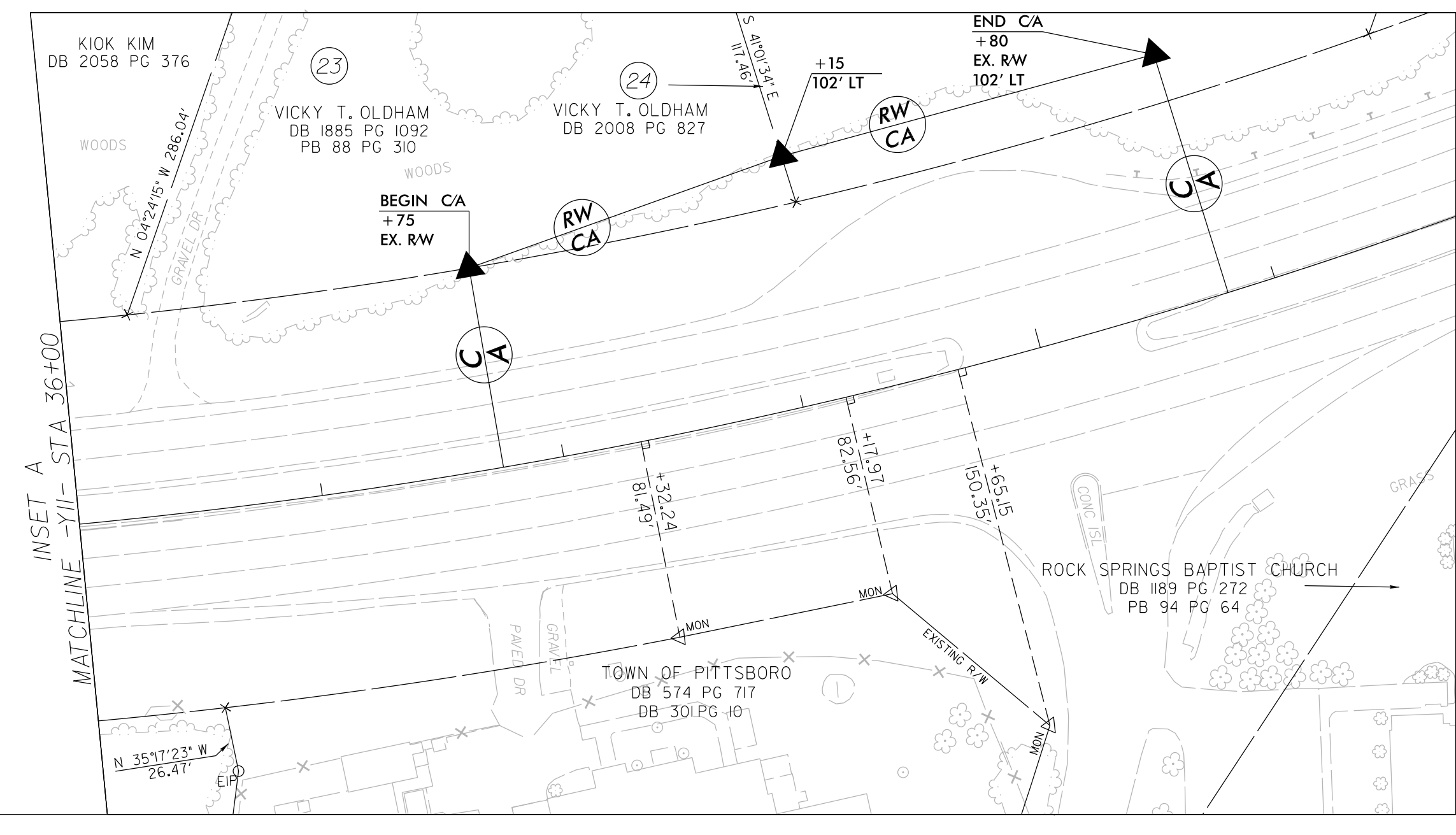
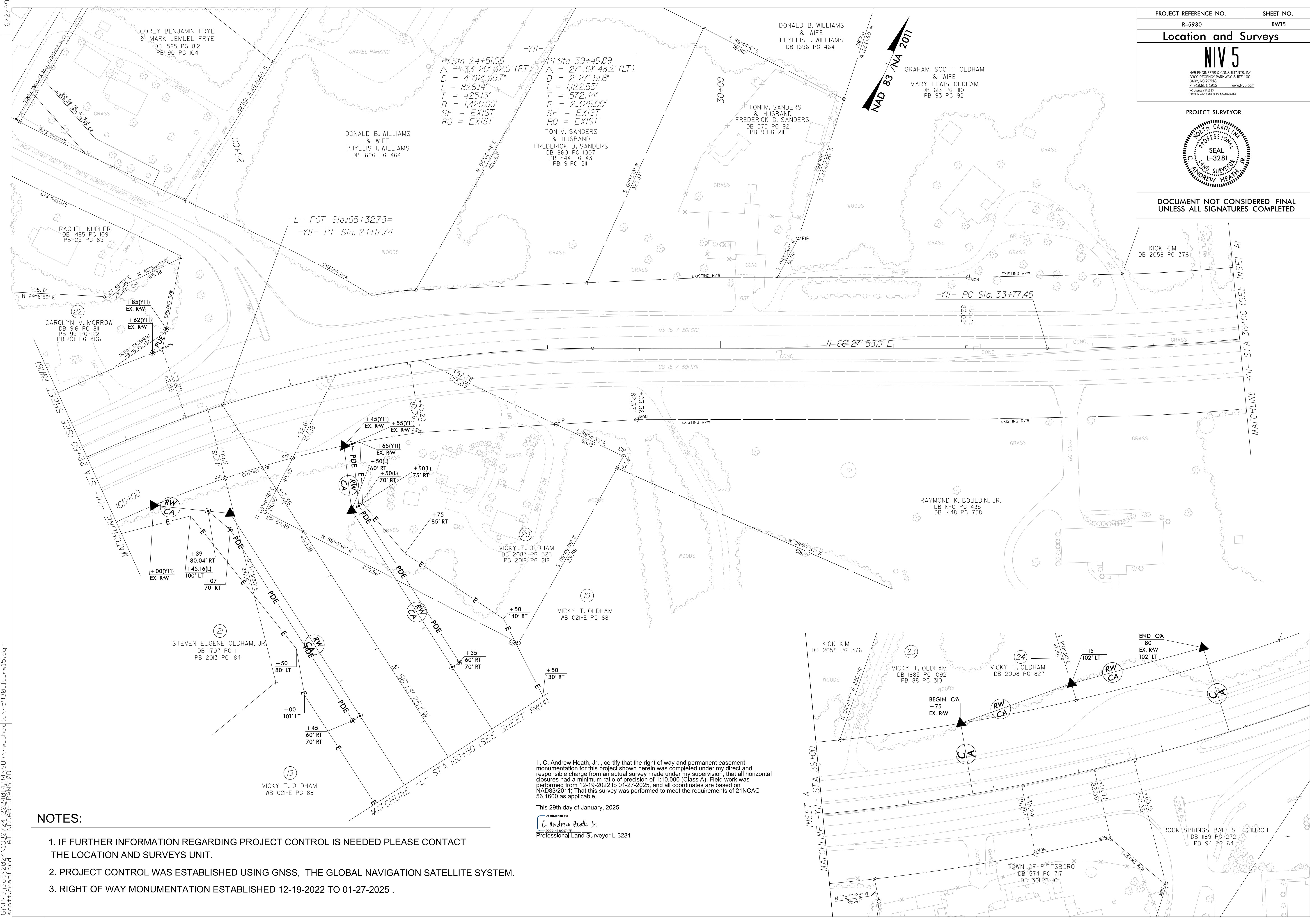


Location and Surveys

NIV5
 NIV5 ENGINEERS & CONSULTANTS, INC.
 3300 REGENCY PARKWAY, SUITE 100
 CARY, NC 27518
 P: 919.851.1912 www.NIV5.com
 NC License # 14312 formerly CIVIL Engineers & Consultants

PROJECT SURVEYOR

DOCUMENT NOT CONSIDERED FINAL
 UNLESS ALL SIGNATURES COMPLETED



I, C. Andrew Heath, Jr., certify that the right of way and permanent easement monumentation for this project shown herein was completed under my direct and responsible charge from an actual survey made under my supervision; that all horizontal closures had a minimum ratio of precision of 1:10,000 (Class A). Field work was performed from 12-19-2022 to 01-27-2025, and all coordinates are based on NAD83/2011; That this survey was performed to meet the requirements of 21NCAC 56.1600 as applicable.

This 29th day of January, 2025.
 C. Andrew Heath, Jr.
 Professional Land Surveyor L-3281

NOTES:

1. IF FURTHER INFORMATION REGARDING PROJECT CONTROL IS NEEDED PLEASE CONTACT THE LOCATION AND SURVEYS UNIT.
2. PROJECT CONTROL WAS ESTABLISHED USING GNSS, THE GLOBAL NAVIGATION SATELLITE SYSTEM.
3. RIGHT OF WAY MONUMENTATION ESTABLISHED 12-19-2022 TO 01-27-2025 .

6/2/2019
 07 JAN 2025 15:49
 C:\PLAN_2025\15-49\1330724-2024014_94\SURV\w_sheets\5930_15_rw15.dgn
 AT NCCAF-CRANIS100 scott@cranis.com

REVISIONS