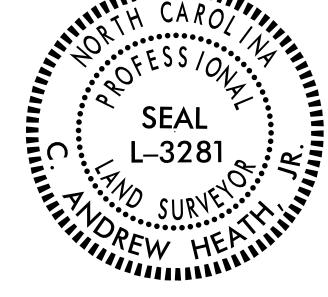


6/2/199

15  
LEE M. PAVAO &  
MARK H. PAVAO & WIFE,  
JENNIFER H. PAVAO  
DB 723 PG 944  
PB 97 PG 241  
PB 30 PG 8

16  
RODNEY MORRIS, TRUSTEE  
DB 644 PG 605  
PB 94 PG 230

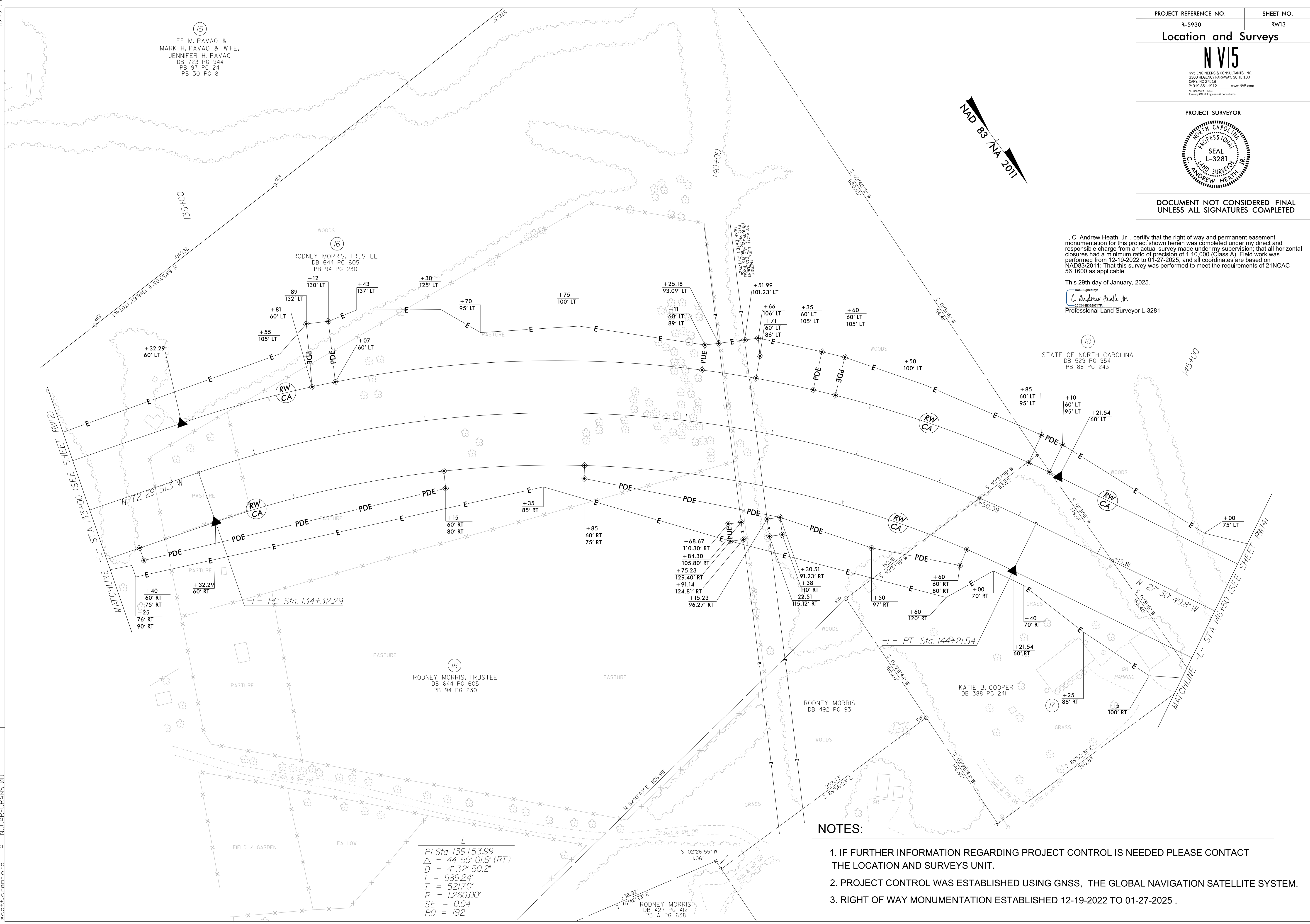
16  
RODNEY MORRIS, TRUSTEE  
DB 644 PG 605  
PB 94 PG 230

PROJECT REFERENCE NO.	R-5930
SHEET NO.	RW13
<b>Location and Surveys</b>	
<b>NIV5</b>	
<small>NIV5 ENGINEERS &amp; CONSULTANTS, INC. 3300 REGENCY PARKWAY, SUITE 100 CARY, NC 27518 P: 919.851.1912 www.NIV5.com NC License # 1281 Formerly CAW Engineers &amp; Consultants</small>	
PROJECT SURVEYOR	
	
DOCUMENT NOT CONSIDERED FINAL UNLESS ALL SIGNATURES COMPLETED	

I, C. Andrew Heath, Jr., certify that the right of way and permanent easement monumentation for this project shown herein was completed under my direct and responsible charge from an actual survey made under my supervision; that all horizontal closures had a minimum ratio of precision of 1:10,000 (Class A). Field work was performed from 12-19-2022 to 01-27-2025, and all coordinates are based on NAD83/2011. That this survey was performed to meet the requirements of 21NCAC 56.1600 as applicable.

This 29th day of January, 2025.  
C. Andrew Heath, Jr.  
Professional Land Surveyor L-3281

REVISIONS



**NOTES:**

1. IF FURTHER INFORMATION REGARDING PROJECT CONTROL IS NEEDED PLEASE CONTACT THE LOCATION AND SURVEYS UNIT.
2. PROJECT CONTROL WAS ESTABLISHED USING GNSS, THE GLOBAL NAVIGATION SATELLITE SYSTEM.
3. RIGHT OF WAY MONUMENTATION ESTABLISHED 12-19-2022 TO 01-27-2025 .

-L-  
PI Sta 139+53.99  
Δ = 44° 59' 01.6" (RT)  
D = 4' 32" 50.2"  
L = 989.24'  
T = 521.70'  
R = 1,260.00'  
SE = 0.04  
RO = 192

RODNEY MORRIS  
DB 427 PG 412  
PB A PG 638

07 JAN 2025 15:43  
C:\PLAN\2025\15\5930\1330724-20240114\_94\SUR\A-r-w\_sheets\5930-13-rw13.dgn  
AT NCCAF-CRANS100  
scott@cranford.com