

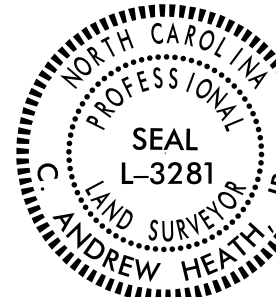
6/2/09

Location and Surveys

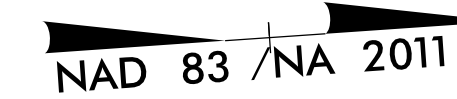
NIV5

NIV5 ENGINEERS & CONSULTANTS, INC.
 3300 REGENCY PARKWAY, SUITE 100
 CARY, NC 27518
 P: 919.851.1912 www.NIV5.com
 NC License # 1339 Formerly CA/N Engineers & Consultants

PROJECT SURVEYOR



DOCUMENT NOT CONSIDERED FINAL UNLESS ALL SIGNATURES COMPLETED



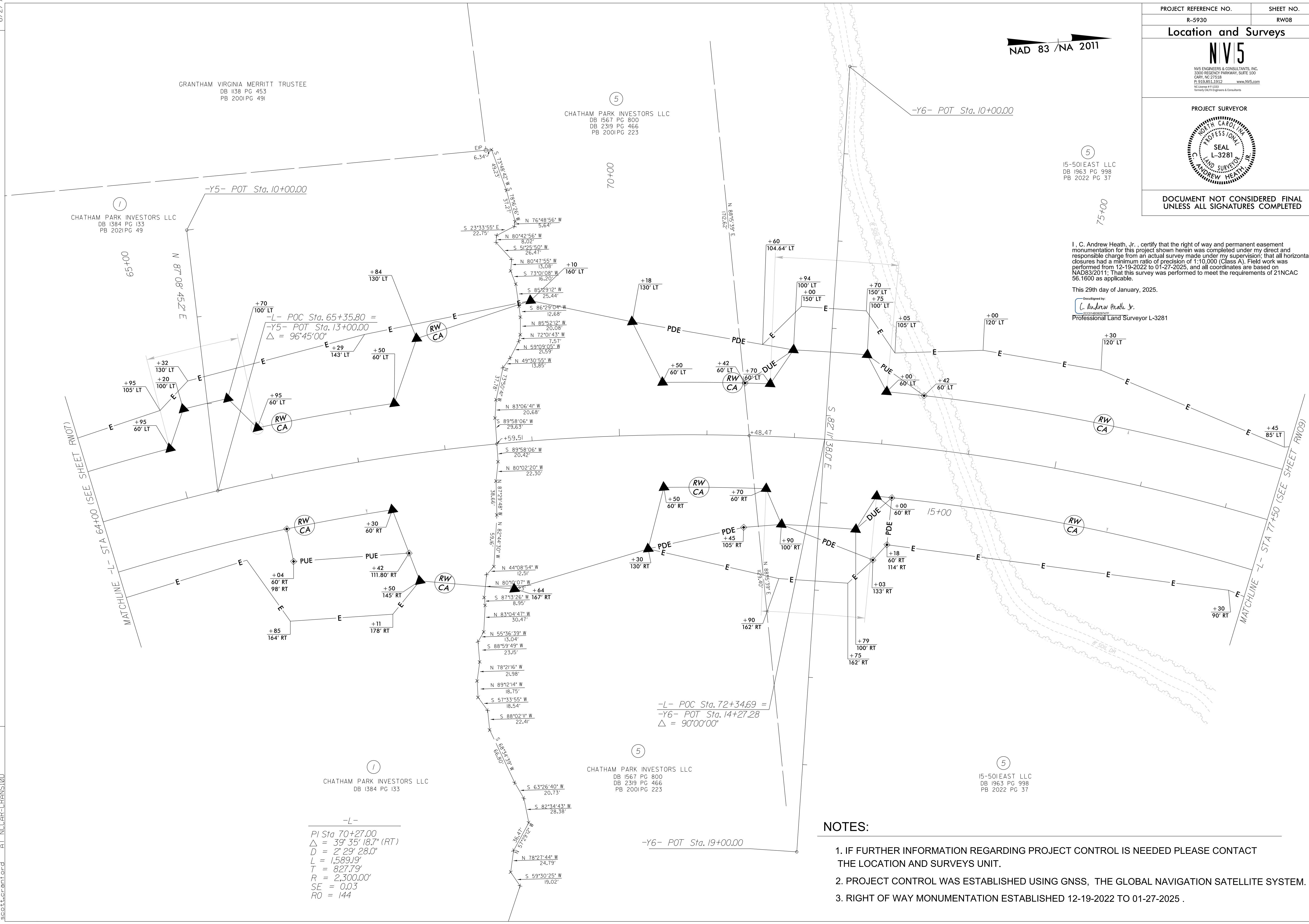
⑤
 15-501 EAST LLC
 DB 1963 PG 99B
 PB 2022 PG 37

I, C. Andrew Heath, Jr., certify that the right of way and permanent easement monumentation for this project shown herein was completed under my direct and responsible charge from an actual survey made under my supervision; that all horizontal closures had a minimum ratio of precision of 1:10,000 (Class A). Field work was performed from 12-19-2022 to 01-27-2025, and all coordinates are based on NAD83/2011. That this survey was performed to meet the requirements of 21NCA 56.1600 as applicable.

This 29th day of January, 2025.

Designed by:
 C. Andrew Heath, Jr.
 20014683001478
 Professional Land Surveyor L-3281

REVISIONS



①
 CHATHAM PARK INVESTORS LLC
 DB 1384 PG 133
 PB 2021 PG 49

⑤
 CHATHAM PARK INVESTORS LLC
 DB 1567 PG 800
 DB 2319 PG 466
 PB 2001 PG 223

①
 CHATHAM PARK INVESTORS LLC
 DB 1384 PG 133

⑤
 CHATHAM PARK INVESTORS LLC
 DB 1567 PG 800
 DB 2319 PG 466
 PB 2001 PG 223

⑤
 15-501 EAST LLC
 DB 1963 PG 99B
 PB 2022 PG 37

-Y5- POT Sta. 10+00.00

-L- POC Sta. 65+35.80 =
 -Y5- POT Sta. 13+00.00
 $\Delta = 96^{\circ}45'00''$

-L- POC Sta. 72+34.69 =
 -Y6- POT Sta. 14+27.28
 $\Delta = 90^{\circ}00'00''$

-Y6- POT Sta. 19+00.00

-L-
 PI Sta. 70+27.00
 $\Delta = 39^{\circ}35'18.7''$ (RT)
 $D = 2^{\circ}29'28.0''$
 $L = 1,589.19'$
 $T = 827.79'$
 $R = 2,300.00'$
 $SE = 0.03$
 $RO = 144$

NOTES:

1. IF FURTHER INFORMATION REGARDING PROJECT CONTROL IS NEEDED PLEASE CONTACT THE LOCATION AND SURVEYS UNIT.
2. PROJECT CONTROL WAS ESTABLISHED USING GNSS, THE GLOBAL NAVIGATION SATELLITE SYSTEM.
3. RIGHT OF WAY MONUMENTATION ESTABLISHED 12-19-2022 TO 01-27-2025 .

07 JAN 2025 15:58
 C:\PLAN\2025\1558\1330724-2024014_94\SURV\w_sheets\5930_1s_rw08.dgn
 AT NCCAF-CRANS100
 scott@cranford.com