

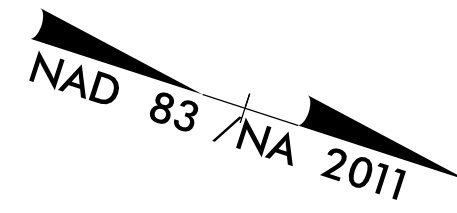


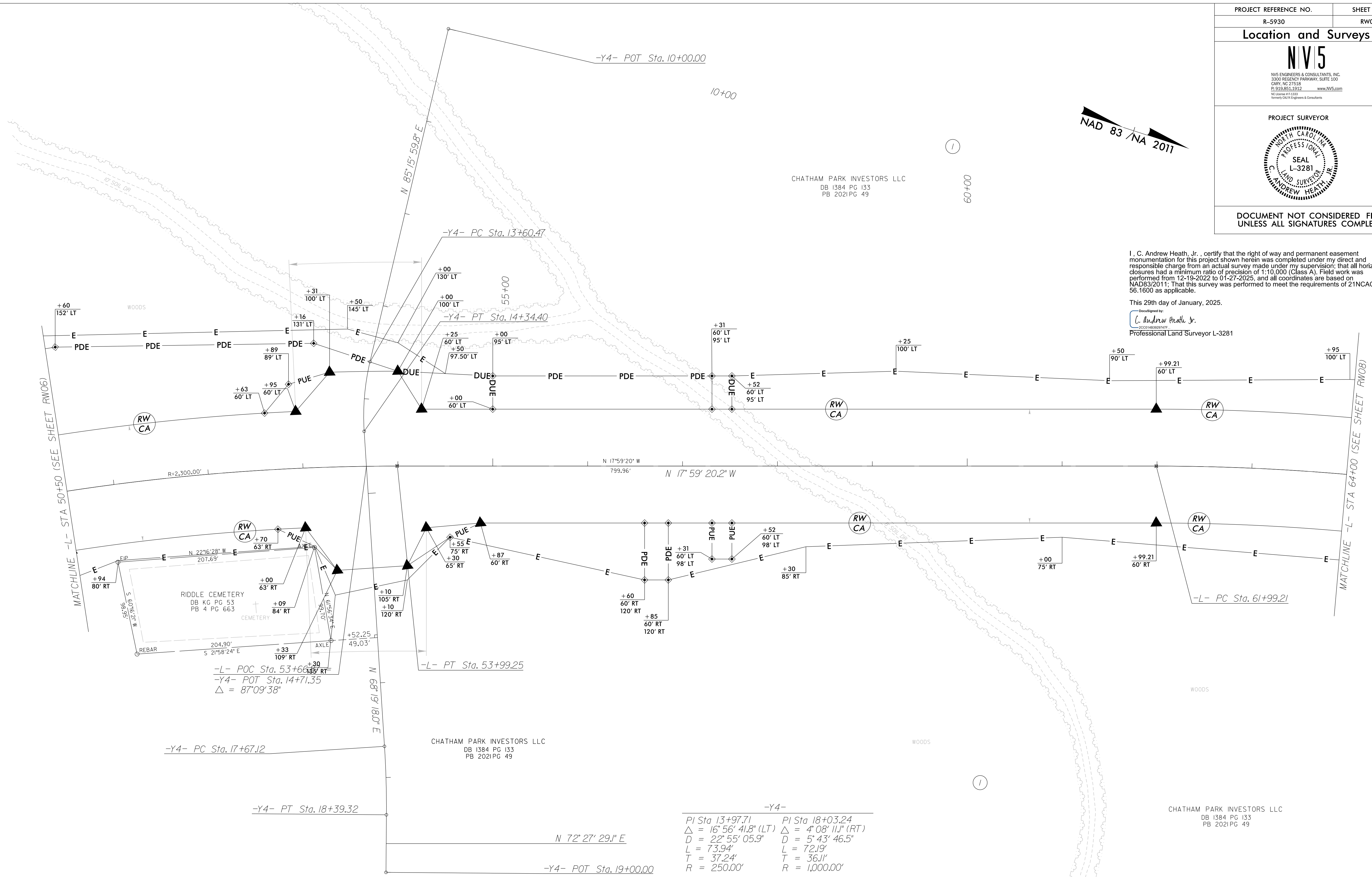
PROJECT REFERENCE NO. R-5930	SHEET NO. RW07
<b>Location and Surveys</b>	
 <b>NIV5</b> <small>NIV5 ENGINEERS &amp; CONSULTANTS, INC.        3300 REGENCY PARKWAY, SUITE 100        CARY, NC 27518        P: 919.851.1912 www.NIV5.com        NC License # 13818 formerly CA/N Engineers &amp; Consultants</small>	
PROJECT SURVEYOR	
	
DOCUMENT NOT CONSIDERED FINAL UNLESS ALL SIGNATURES COMPLETED	



I, C. Andrew Heath, Jr., certify that the right of way and permanent easement monumentation for this project shown herein was completed under my direct and responsible charge from an actual survey made under my supervision; that all horizontal closures had a minimum ratio of precision of 1:10,000 (Class A). Field work was performed from 12-19-2022 to 01-27-2025, and all coordinates are based on NAD83/2011. That this survey was performed to meet the requirements of 21NCAC 56.1600 as applicable.

This 29th day of January, 2025.  
 C. Andrew Heath, Jr.  
 Professional Land Surveyor L-3281

REVISIONS



-Y4-	-Y4-
PI Sta 13+97.71	PI Sta 18+03.24
Δ = 16' 56' 41.8" (LT)	Δ = 4' 08' 11.1" (RT)
D = 22' 55' 05.9"	D = 5' 43' 46.5"
L = 73.94'	L = 72.19'
T = 37.24'	T = 36.11'
R = 250.00'	R = 1,000.00'

-L-	-L-
PI Sta 51+17.00	PI Sta 70+27.00
Δ = 14' 08' 03.1" (RT)	Δ = 39' 35' 18.7" (RT)
D = 2' 29' 28.0"	D = 2' 29' 28.0"
L = 567.38'	L = 1,589.19'
T = 285.14'	T = 827.79'
R = 2,300.00'	R = 2,300.00'
SE = 0.03	SE = 0.03
RO = 144	RO = 144

**NOTES:**

1. IF FURTHER INFORMATION REGARDING PROJECT CONTROL IS NEEDED PLEASE CONTACT THE LOCATION AND SURVEYS UNIT.
2. PROJECT CONTROL WAS ESTABLISHED USING GNSS, THE GLOBAL NAVIGATION SATELLITE SYSTEM.
3. RIGHT OF WAY MONUMENTATION ESTABLISHED 12-19-2022 TO 01-27-2025 .

07 JAN 2025 15:55 1330724-2024014 94 SURV.rw.sheets v=5930.1 s.rw07.dgn  
 AT: N:\CART-CRANS\100 scott.scott@niv5.com