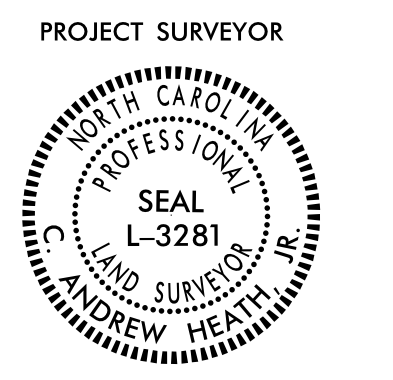
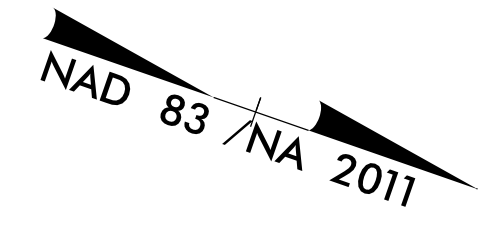


Location and Surveys

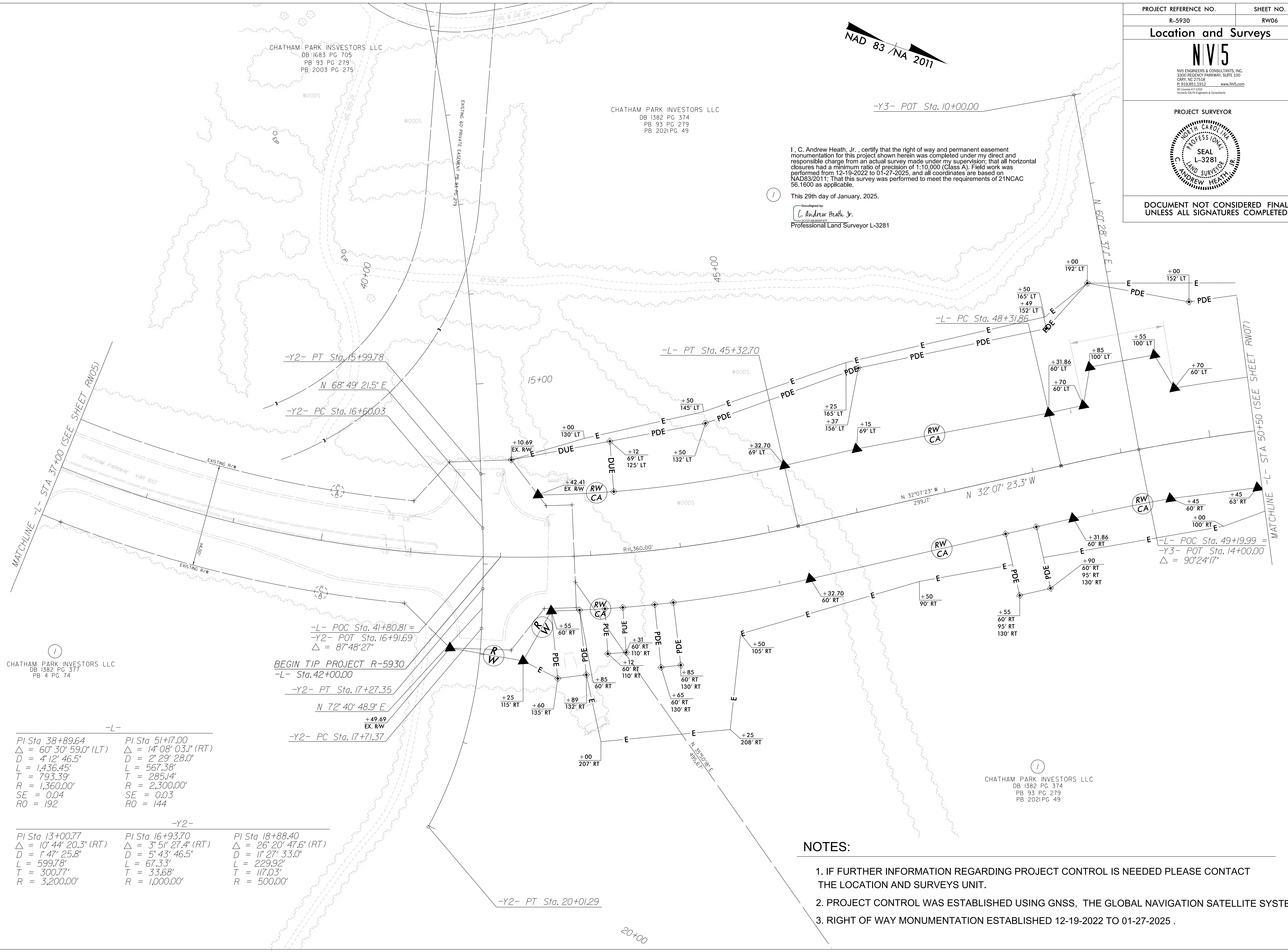


DOCUMENT NOT CONSIDERED FINAL UNLESS ALL SIGNATURES COMPLETED



I, C. Andrew Heath, Jr., certify that the right of way and permanent easement monumentation for this project shown herein was completed under my direct and responsible charge from an actual survey made under my supervision; that all horizontal closures had a minimum ratio of precision of 1:10,000 (Class A). Field work was performed from 12-19-2022 to 01-27-2025, and all coordinates are based on NAD83/2011; That this survey was performed to meet the requirements of 21NCAC 58.1600 as applicable.

This 29th day of January, 2025.
Designed by: I. C. Andrew Heath, Jr.
Professional Land Surveyor L-3281



REVISIONS

CHATHAM PARK INVESTORS LLC
DB 1382 PG 377
PB 4 PG 74

-L-
PI Sta 38+89.64 Δ = 60° 30' 59.0" (LT)
D = 4' 12' 46.5"
L = 1,436.45'
T = 793.39'
R = 1,360.00'
SE = 0.04
RO = 192

-Y2-
PI Sta 13+00.77 Δ = 10° 44' 20.3" (RT)
D = 1' 47' 25.8"
L = 599.78'
T = 300.77'
R = 3,200.00'

-L- POC Sta. 41+80.81 =
-Y2- POT Sta. 16+91.69
Δ = 87° 48' 27"

BEGIN TIP PROJECT R-5930
-L- Sta. 42+00.00

-Y2- PT Sta. 17+27.35
N 72° 40' 48.9" E
+49.69 EX. RW
-Y2- PC Sta. 17+71.37

NOTES:

- 1. IF FURTHER INFORMATION REGARDING PROJECT CONTROL IS NEEDED PLEASE CONTACT THE LOCATION AND SURVEYS UNIT.
- 2. PROJECT CONTROL WAS ESTABLISHED USING GNSS, THE GLOBAL NAVIGATION SATELLITE SYSTEM.
- 3. RIGHT OF WAY MONUMENTATION ESTABLISHED 12-19-2022 TO 01-27-2025 .

07 JAN 2025 15:15:11 \\1330724-2025\014 94\SUR\p-w_sheets\5930-1.s_rw06.dgn
AT: NCCART-CRANFORD