
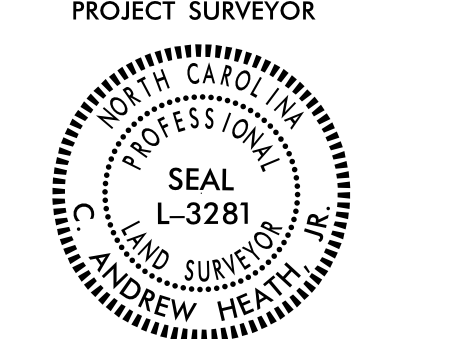
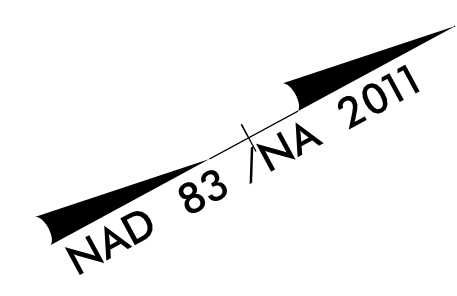
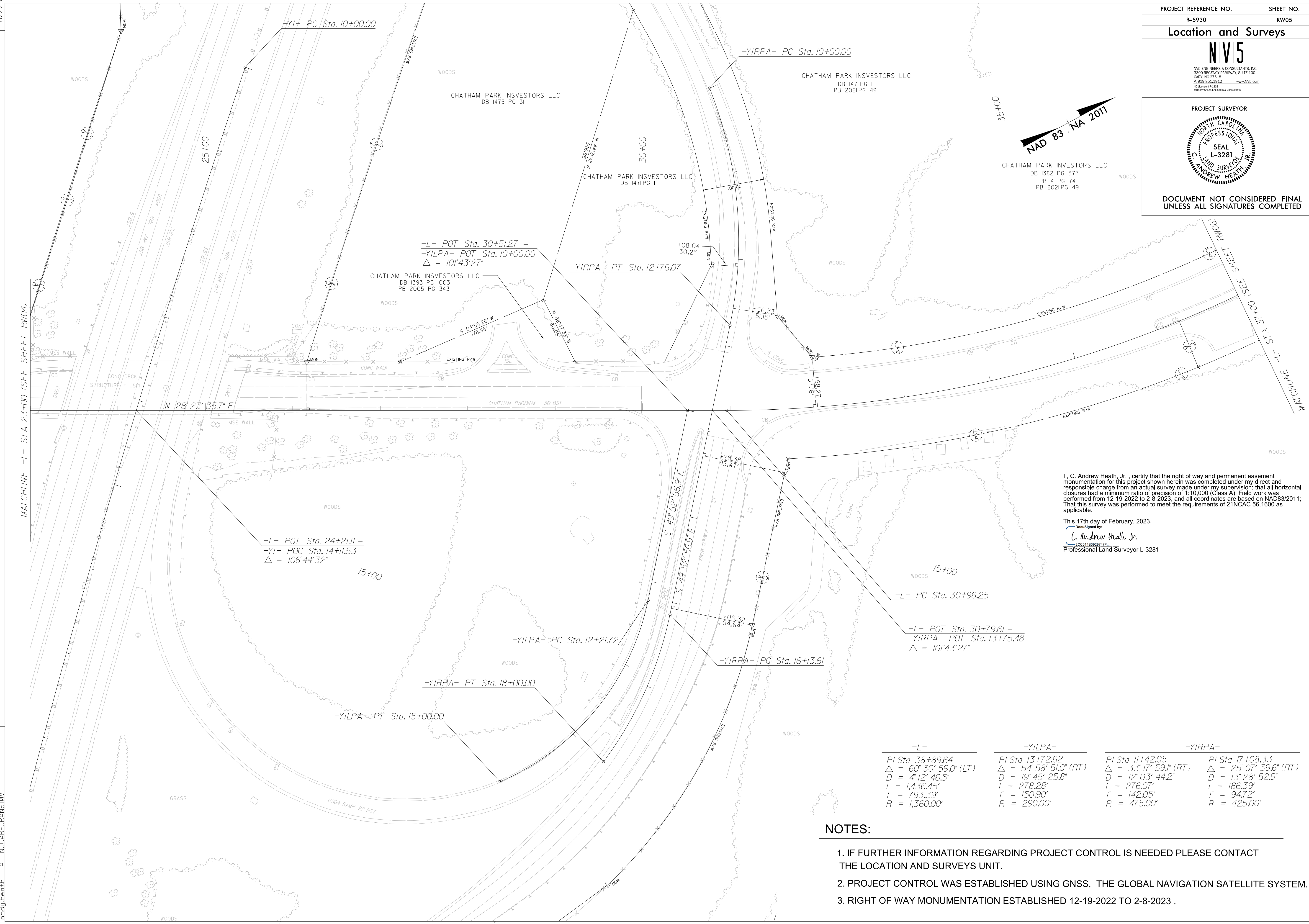


PROJECT REFERENCE NO. R-5930	SHEET NO. RW05
Location and Surveys	
 <small>NV5 ENGINEERS & CONSULTANTS, INC. 3300 REGENCY PARKWAY, SUITE 100 CARY, NC 27518 P: 919.851.1912 www.nv5.com NC License # 12339 Formerly C&H Engineers & Consultants</small>	
PROJECT SURVEYOR  <small>CHATHAM PARK INVESTORS LLC DB 1382 PG 377 PB 4 PG 74 PB 2021 PG 49</small>	
DOCUMENT NOT CONSIDERED FINAL UNLESS ALL SIGNATURES COMPLETED	



REVISIONS



MATCHLINE -L- STA 23+00 (SEE SHEET RMO4)

MATCHLINE -L- STA 37+00 (SEE SHEET RMO6)

-L- POT Sta. 24+21.11 =
-Y1- POC Sta. 14+11.53
 $\Delta = 106'44'32''$

-YIRPA- PT Sta. 18+00.00

-YILPA- PT Sta. 15+00.00

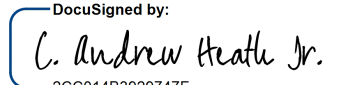
-YILPA- PC Sta. 12+21.72

-YIRPA- PC Sta. 16+13.61

-L- POT Sta. 30+79.61 =
-YIRPA- POT Sta. 13+75.48
 $\Delta = 10'43'27''$

-L-	-YILPA-	-YIRPA-
PI Sta. 38+89.64	PI Sta. 13+72.62	PI Sta. 11+42.05
$\Delta = 60'30'59.0''$ (LT)	$\Delta = 54'58'51.0''$ (RT)	$\Delta = 33'17'59.1''$ (RT)
D = 4'12'46.5"	D = 19'45'25.8"	D = 12'03'44.2"
L = 1,436.45'	L = 278.28'	L = 276.07'
T = 793.39'	T = 150.90'	T = 142.05'
R = 1,360.00'	R = 290.00'	R = 475.00'

I, C. Andrew Heath, Jr., certify that the right of way and permanent easement monumentation for this project shown herein was completed under my direct and responsible charge from an actual survey made under my supervision; that all horizontal closures had a minimum ratio of precision of 1:10,000 (Class A). Field work was performed from 12-19-2022 to 2-8-2023, and all coordinates are based on NAD83/2011; That this survey was performed to meet the requirements of 21NCAC 56.1600 as applicable.

This 17th day of February, 2023.
 Signed by:

 C. Andrew Heath, Jr.
 2000148392941E
 Professional Land Surveyor L-3281

NOTES:

- IF FURTHER INFORMATION REGARDING PROJECT CONTROL IS NEEDED PLEASE CONTACT THE LOCATION AND SURVEYS UNIT.
- PROJECT CONTROL WAS ESTABLISHED USING GNSS, THE GLOBAL NAVIGATION SATELLITE SYSTEM.
- RIGHT OF WAY MONUMENTATION ESTABLISHED 12-19-2022 TO 2-8-2023 .