

05/08/99

T.I.P. NO.	SHEET NO.
B5766	UC-1

TIP PROJECT: B-5766

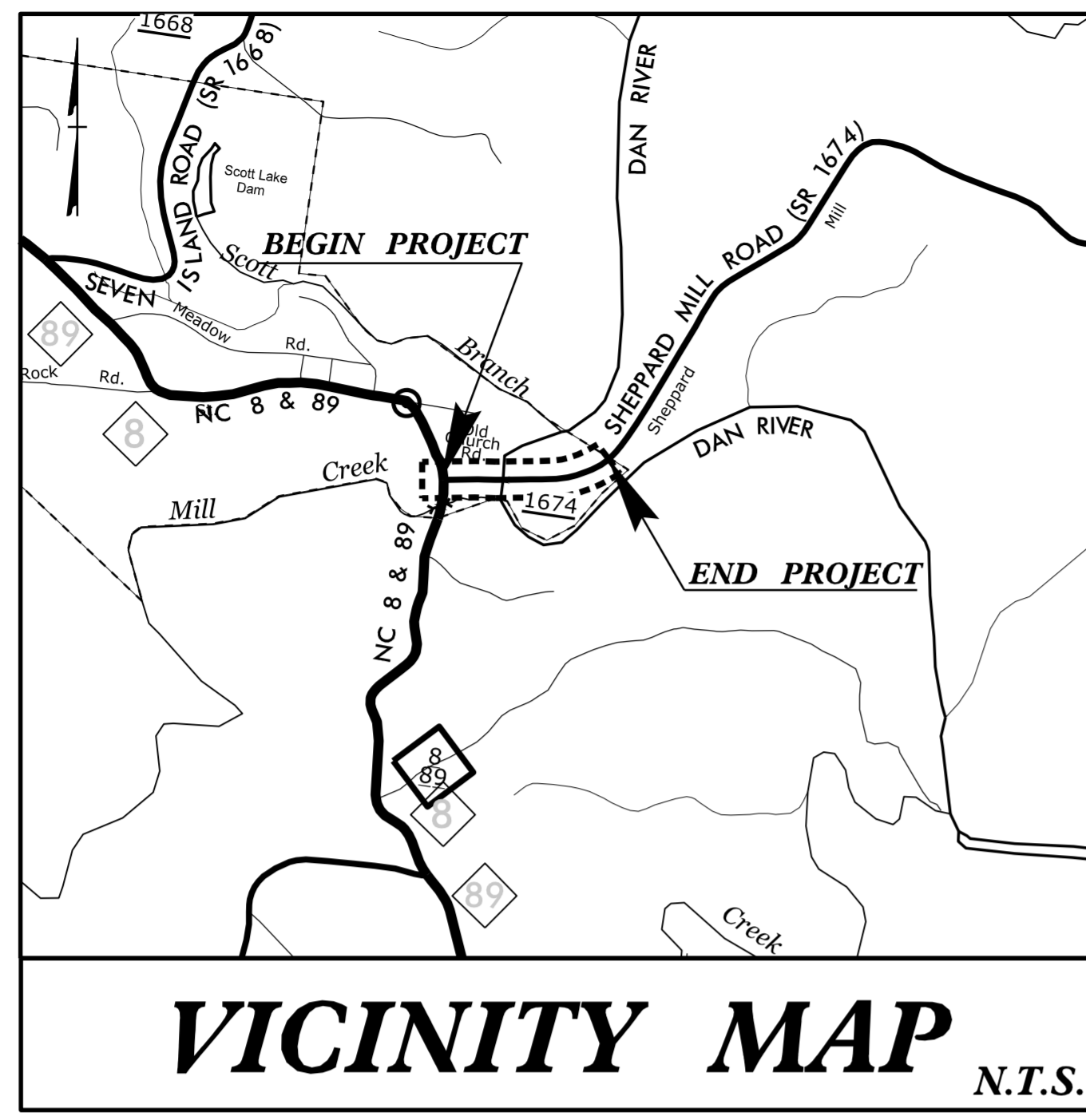
CONTRACT:

STATE OF NORTH CAROLINA
DIVISION OF HIGHWAYS

**STOKES COUNTY
UTILITIES CONSTRUCTION PLANS**

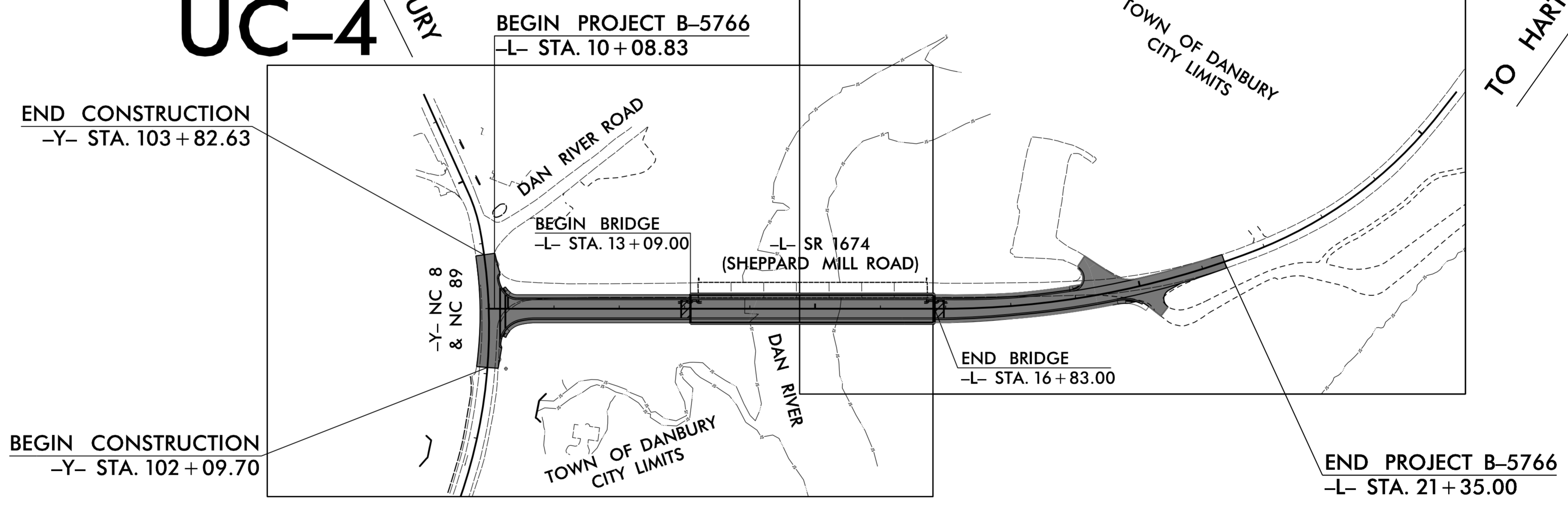
**LOCATION: BRIDGE NO. 82 OVER DAN RIVER ON
SR 1674 (SHEPPARD MILL ROAD)
DANBURY, NORTH CAROLINA**

TYPE OF WORK: UTILITIES CONSTRUCTION

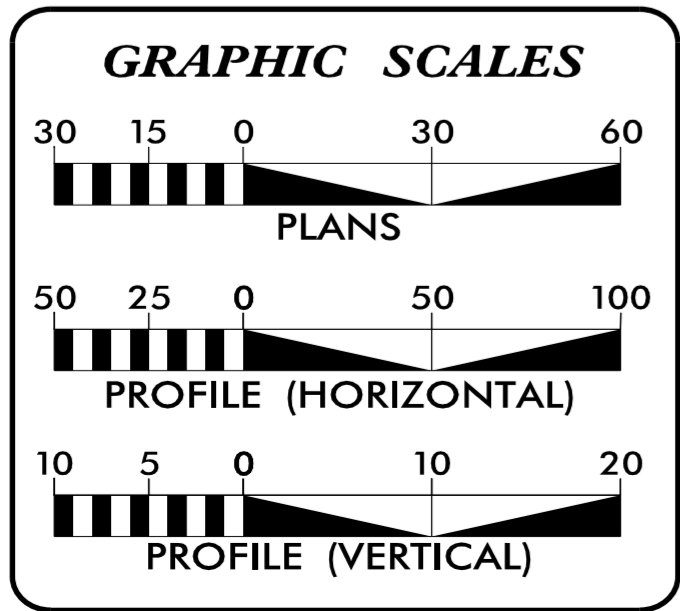


UC-4
TO DANBURY

UC-5



DOCUMENT NOT CONSIDERED FINAL
UNTIL ALL SIGNATURES ARE COMPLETED



SHEET NO	DESCRIPTION:
UC-1	TITLE SHEET
UC-2	UTILITY SYMBOLOGY
UC-3	NOTES
UC-3A, UC-3B	DETAILS
UC-4, 5	UTILITY CONSTRUCTION SHEETS
UC-6, 7	UTILITY PROFILE SHEETS

WATER AND SEWER OWNERS ON PROJECT

STOKES COUNTY PUBLIC WORKS

PREPARED IN THE OFFICE OF

PENNONI ASSOCIATES INC.
5430 WADE PARK BLVD., SUITE 106,
RALEIGH, NC 27607 PHONE: 919.929.1173
FAX: 919.493.6548 NC LICENSE #F-1267

BRIAN WILES, PE UTILITY PROJECT MANAGER
ERIC TWEED, PE UTILITY ENGINEER

SEAL

Eric Tweed 11/22/2024
300C82B1819D415

**DIVISION OF HIGHWAYS
DIVISION 9**

375 SILAS CREEK PARKWAY
WINSTON SALEM, 27127

RYAN NEWCOMB, PE DIVISION PROJECT ENGINEER
LOU PORTER DIVISION UTILITY COORDINATOR
JOSH MCMAHAN DIVISION UTILITY ENGINEER

10/3/2024 R:\Utilities\Engineering\UC\Proj\B5766_ut_tsh_UC01_psh.dgn -USERNAME-

STATE OF NORTH CAROLINA DIVISION OF HIGHWAYS

UTILITIES PLAN SHEET SYMBOLS

PROPOSED WATER SYMBOLS

Water Line (Sized as Shown)	
11¼ Degree Bend	
22½ Degree Bend	
45 Degree Bend	
90 Degree Bend	
Plug	
Tee	
Cross	
Reducer	
Gate Valve	
Butterfly Valve	
Tapping Valve	
Line Stop	
Line Stop with Bypass	
Blow Off	
Fire Hydrant	
Relocate Fire Hydrant	
Remove Fire Hydrant	
Water Meter	
Relocate Water Meter	
Remove Water Meter	
Water Pump Station	
RPZ Backflow Preventer	
DCV Backflow Preventer	
Relocate RPZ Backflow Preventer	
Relocate DCV Backflow Preventer	

PROPOSED SEWER SYMBOLS

Gravity Sewer Line (Sized as Shown)	
Force Main Sewer Line (Sized as Shown)	
Manhole (Sized per Note)	
Sewer Pump Station	

PROPOSED MISCELLANEOUS UTILITIES SYMBOLS

Power Pole	
Telephone Pole	
Joint Use Pole	
Telephone Pedestal	
Utility Line by Others (Type as Shown)	
Trenchless Installation	
Encasement by Open Cut	
Encasement	

Thrust Block	
Air Release Valve	
Utility Vault	
Concrete Pier	
Steel Pier	
Plan Note	
Pay Item Note	

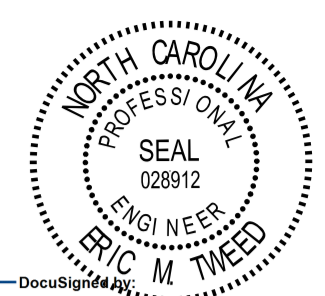
EXISTING UTILITIES SYMBOLS

Power Pole		*Underground Power Line	
Telephone Pole		*Underground Telephone Cable	
Joint Use Pole		*Underground Telephone Conduit	
Utility Pole		*Underground Fiber Optics Telephone Cable	
Utility Pole with Base		*Underground TV Cable	
H-Frame Pole		*Underground Fiber Optics TV Cable	
Power Transmission Line Tower		*Underground Gas Pipeline	
Water Manhole		Aboveground Gas Pipeline	
Power Manhole		*Underground Water Line	
Telephone Manhole		Aboveground Water Line	
Sanitary Sewer Manhole		*Underground Gravity Sanitary Sewer Line	
Hand Hole for Cable		Aboveground Gravity Sanitary Sewer Line	
Power Transformer		*Underground SS Forced Main Line	
Telephone Pedestal		Underground Unknown Utility Line	
CATV Pedestal		SUE Test Hole	
Gas Valve		Water Meter	
Gas Meter		Water Valve	
Located Miscellaneous Utility Object		Fire Hydrant	
Abandoned According to Utility Records		Sanitary Sewer Cleanout	
End of Information			

*For Existing Utilities
 Utility Line Drawn from Record (Type as Shown)

Designated Utility Line (Type as Shown)

5/14/99
 10/3/2024
 Utilities Engineering\UC\Proj\B5766-ut_sym_UC02_psh.dgn
 REVISIONS
 REV: 2/1/2012

PROJECT REFERENCE NO. B-5766		SHEET NO. UC-3	
DESIGNED BY:	EMT		
DRAWN BY:	LMS		
CHECKED BY:			
APPROVED BY:			
REVISED:			
NORTH CAROLINA DEPARTMENT OF TRANSPORTATION		UTILITIES ENGINEERING SEC. PHONE: (919) 707-6690 FAX: (919) 250-4151	

UTILITY CONSTRUCTION

GENERAL NOTES:

1. THE PROPOSED UTILITY CONSTRUCTION SHALL MEET THE APPLICABLE REQUIREMENTS OF THE NC DEPARTMENT OF TRANSPORTATION'S "STANDARD SPECIFICATIONS FOR ROADS AND STRUCTURES" DATED JANUARY 2024.
2. THE EXISTING WATER, FORCEMAIN AND GRAVITY SEWER LINES BELONG TO STOKES COUNTY.
3. ALL WATER LINES TO BE INSTALLED WITHIN COMPLIANCE OF THE RULES AND REGULATIONS OF THE NORTH CAROLINA DEPARTMENT OF ENVIRONMENTAL QUALITY, DIVISION OF WATER RESOURCES, PUBLIC WATER SUPPLY SECTION. ALL SEWER LINES TO BE INSTALLED WITHIN COMPLIANCE OF THE RULES AND REGULATIONS OF THE NORTH CAROLINA DEPARTMENT OF ENVIRONMENT QUALITY, DIVISION OF WATER RESOURCES, WATER QUALITY SECTION. PERFORM ALL WORK IN ACCORDANCE WITH THE APPLICABLE PLUMBING CODES.
4. THE UTILITY OWNER OWNS THE EXISTING UTILITY FACILITIES AND WILL OWN THE NEW UTILITY FACILITIES AFTER ACCEPTANCE BY THE DEPARTMENT. THE DEPARTMENT OWNS THE CONSTRUCTION CONTRACT AND HAS ADMINISTRATIVE AUTHORITY. COMMUNICATIONS AND DECISIONS BETWEEN THE CONTRACTOR AND UTILITY OWNER ARE NOT BINDING UPON THE DEPARTMENT OR THIS CONTRACT UNLESS AUTHORIZED BY THE ENGINEER. AGREEMENTS BETWEEN THE UTILITY OWNER AND CONTRACTOR FOR THE WORK THAT IS NOT PART OF THIS CONTRACT OR IS SECONDARY TO THIS CONTRACT ARE ALLOWED, BUT ARE NOT BINDING UPON THE DEPARTMENT.
5. PROVIDE ACCESS FOR THE DEPARTMENT PERSONNEL AND THE OWNER'S REPRESENTATIVES TO ALL PHASES OF CONSTRUCTION. NOTIFY DEPARTMENT PERSONNEL AND THE UTILITY OWNER TWO WEEKS PRIOR TO COMMENCEMENT OF ANY WORK AND ONE WEEK PRIOR TO SERVICE INTERRUPTION. KEEP UTILITY OWNERS' REPRESENTATIVES INFORMED OF WORK PROGRESS AND PROVIDE OPPORTUNITY FOR INSPECTION OF CONSTRUCTION AND TESTING.

6. THE PLANS DEPICT THE BEST AVAILABLE INFORMATION FOR THE LOCATION, SIZE, AND TYPE OF MATERIAL FOR ALL EXISTING UTILITIES. MAKE INVESTIGATIONS FOR DETERMINING THE EXACT LOCATION, SIZE, AND TYPE MATERIAL OF THE EXISTING FACILITIES AS NECESSARY FOR THE CONSTRUCTION OF THE PROPOSED UTILITIES AND FOR AVOIDING DAMAGE TO EXISTING FACILITIES. REPAIR ANY DAMAGE INCURRED TO EXISTING FACILITIES TO THE ORIGINAL OR BETTER CONDITION AT NO ADDITIONAL COST TO THE DEPARTMENT.
7. MAKE FINAL CONNECTIONS OF THE NEW WORK TO THE EXISTING SYSTEM WHERE INDICATED ON THE PLANS, AS REQUIRED TO FIT THE ACTUAL CONDITIONS, OR AS DIRECTED.
8. MAKE CONNECTIONS BETWEEN EXISTING AND PROPOSED UTILITIES AT TIMES MOST CONVENIENT TO THE PUBLIC, WITHOUT ENDANGERING THE UTILITY SERVICE, AND IN ACCORDANCE WITH THE UTILITY OWNER'S REQUIREMENTS. MAKE CONNECTIONS ON WEEKENDS, AT NIGHT, AND ON HOLIDAYS IF NECESSARY.
9. ALL UTILITY MATERIALS SHALL BE APPROVED PRIOR TO DELIVERY TO THE PROJECT. SEE 1500-7, " SUBMITTALS AND RECORDS" IN SECTION 1500 OF THE STANDARD SPECIFICATIONS.

PROJECT SPECIFIC NOTES:

1. BURIED FORCEMAIN SHALL BE RESTRAINED JOINT C900 PVC PIPE. THE AERIAL SUSPENDED PORTION OF THE FORCEMAIN SHALL BE RESTRAINED JOINT DIP. WATER PIPE SHALL BE RJ DIP.
2. CONSTRUCTION OF THE AERIAL SUSPENDED PORTION OF THE FORCEMAIN: EACH RJ PIPE SECTION SHALL BE PULLED DURING INSTALLATION IN ORDER TO FULLY EXTEND THE JOINT AND REMOVE SLACK. PIPE SHALL BE HYDROSTATICALLY TESTED PRIOR TO MAKING OFF-BRIDGE CONNECTIONS. FAILURE TO DO SO MAY RESULT IN DEFLECTION OF PIPE WHEN PRESSURE IS APPLIED. CONTRACTOR SHALL BE RESPONSIBLE FOR CORRECTING DEFLECTION.
3. CONTRACTOR'S ATTENTION IS DIRECTED TO SECTIONS 102, 107, AND 1550 OF THE STANDARD SPECIFICATIONS CONCERNING TRENCHLESS INSTALLATION. IT IS CONTRACTOR'S RESPONSIBILITY TO HAVE BORE DESIGNED AND SEALED BY A LICENSED NORTH CAROLINA PROFESSIONAL ENGINEER. NO DAMAGE IS ALLOWED TO RIVER, WETLANDS, OR BUFFER ZONES.

UTILITY CONSTRUCTION


**DOCUMENT NOT CONSIDERED FINAL
UNLESS ALL SIGNATURES COMPLETED**

MANHOLE NOTES

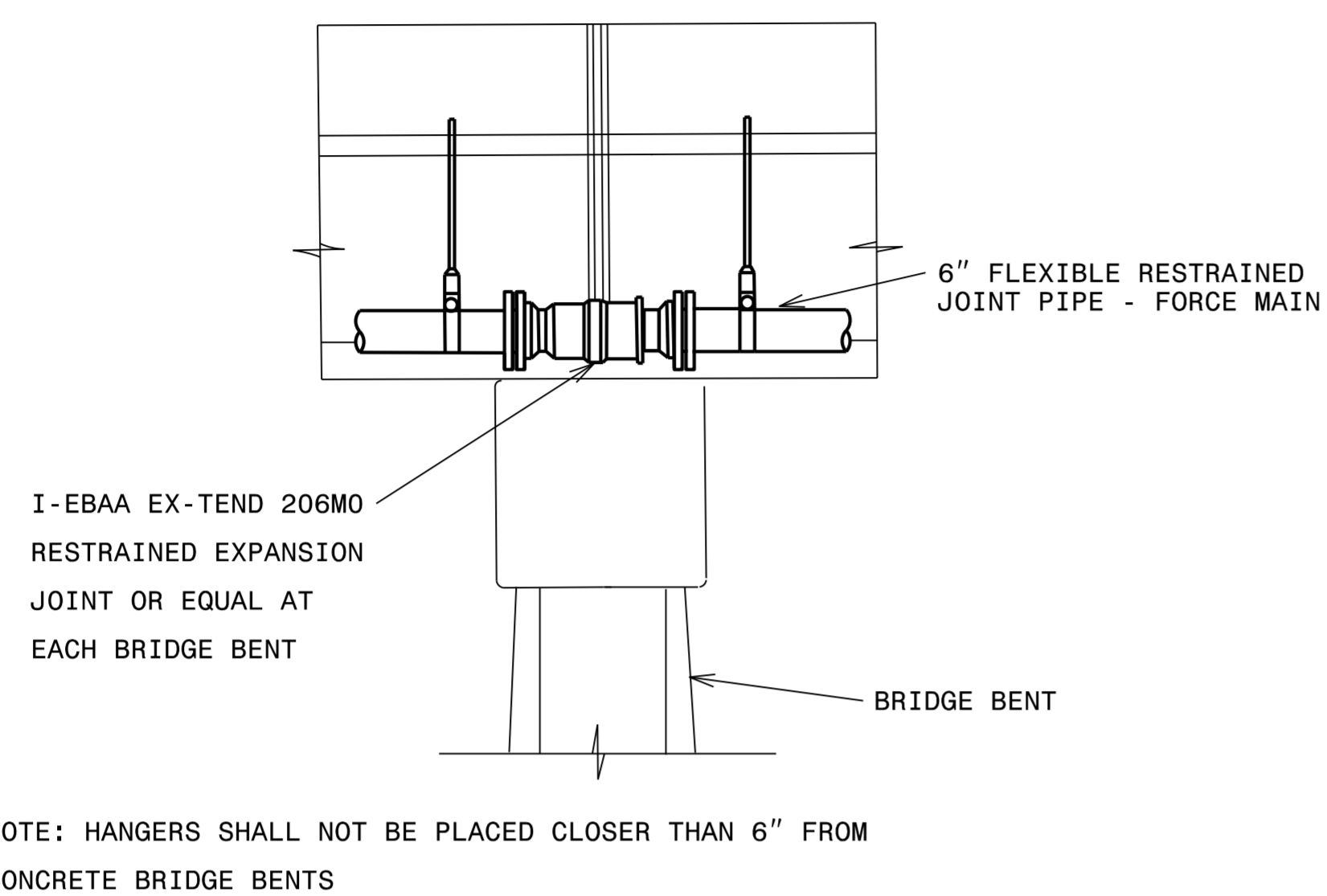
1. ALL PRE CAST CONCRETE MANHOLES SHALL CONFORM TO THE LATEST REVISION OF ASTM C478.
2. CONCRETE SHALL BE 4000 PSI AT 28 DAYS MINIMUM.
3. STEEL REINFORCEMENT SHALL BE GRADE 40 BILLET STEEL CONFORMING TO THE LATEST REVISION OF ASTM-A-185 FOR WALL REINFORCEMENT, AND THE LATEST REVISION OF ASTM-A615 FOR THE BASE REINFORCEMENT.
4. STANDARD JOINTS SHALL BE SEALED WITH PUTTY TYPE PLASTIC CEMENT PER FED. SPEC. SS-C-153 OR AN O-RING TYPE JOINT CONFORMING TO THE LATEST REVISION OF ASTM-C443.
5. MANHOLE INLETS AND OUTLETS SHALL BE CAST IN PLACE FLEXIBLE RUBBER SLEEVES BOOTS PER THE LATEST REVISION OF ASTM-C923.
6. INVERTS TO BE CONSTRUCTED OF A CONCRETE BENCH.
7. THE MAXIMUM SEPARATION OR INVERT IN TO INVERT OUT WITHIN A MANHOLE IS 0.50 FEET. WHEN THE SEPARATION IS GREATER THAN 0.5 FEET A DROP MANHOLE MUST BE USED.
8. MANHOLES GREATER THAN 18 FEET IN DEPTH SHALL HAVE AN INSIDE DIAMETER OR 5'-0". FOR SANITARY SEWER MAINS GREATER THAN EIGHTEEN INCHES (18") IN DIAMETER, MANHOLES SHALL BE A MINIMUM OF 5'-0" IN DIAMETER.
9. RIM ELEVATIONS SHALL BE AT GRADE IN STREETS & PARKING LOTS.
10. RIM ELEVATIONS ALONG OUTFALLS SHALL BE A MINIMUM OF 3' ABOVE EXISTING GROUND ELEVATION. IF THE OUTFALL IS LOCATED WITHIN THE FLOOD PLAIN, RIM ELEVATIONS SHALL BE 2' ABOVE THE 100-YEAR FLOOD ELEVATION (WHILE STILL MAINTAINING THE 3' ABOVE THE EXISTING GROUND ELEVATION MINIMUM REQUIREMENT). THE 100-YEAR FLOOD ELEVATION SHALL BE NOTED ON THE CONSTRUCTION DRAWINGS.

PROJECT TYPICAL DETAILS

UTILITY CONSTRUCTION

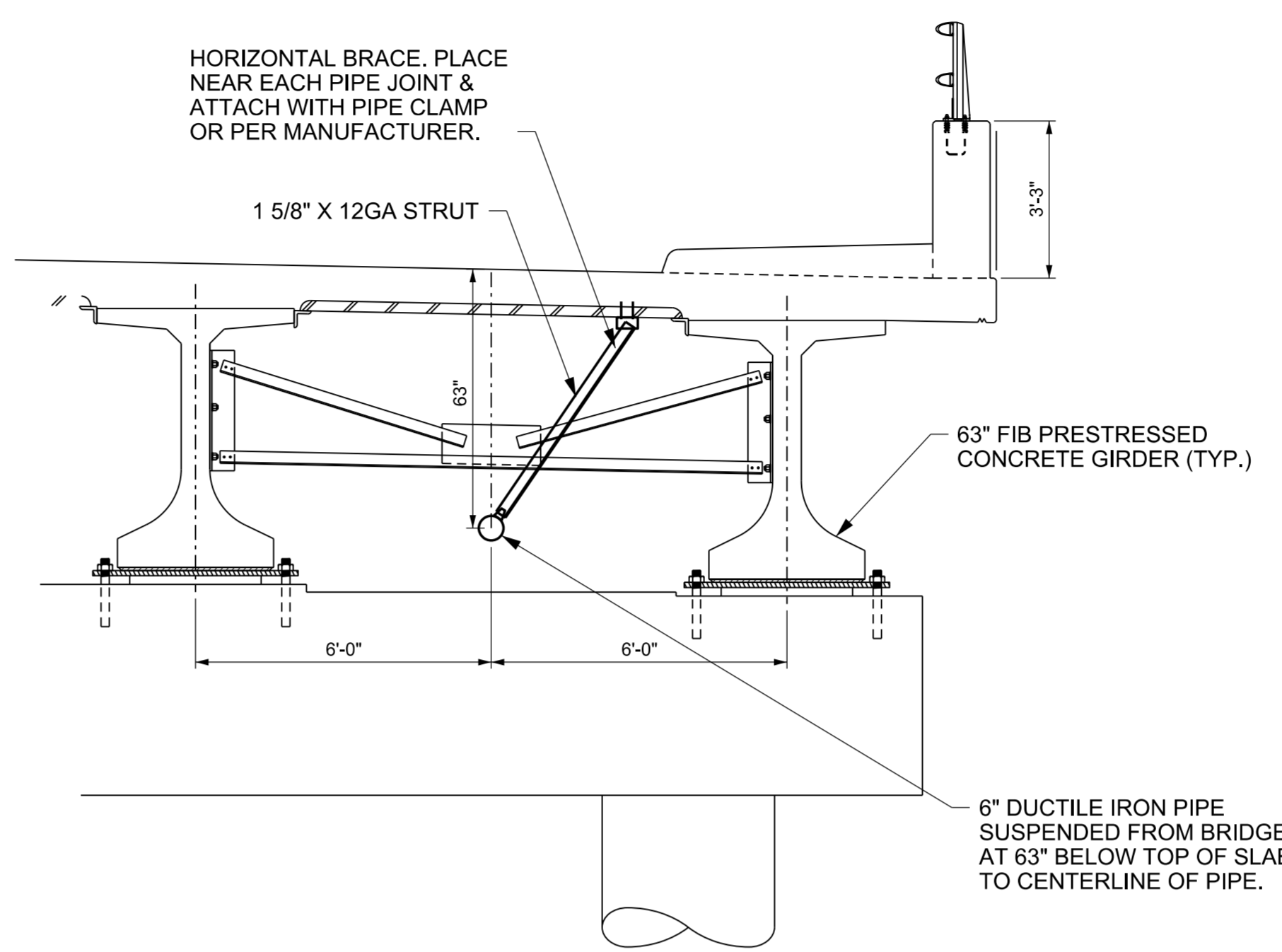
PROJECT REFERENCE NO. B-5766	SHEET NO. UC-3A
DESIGNED BY: EMT	
DRAWN BY: LMS	
CHECKED BY:	
APPROVED BY:	
REVISED:	11/22/2024
NORTH CAROLINA DEPARTMENT OF TRANSPORTATION UTILITIES ENGINEERING SEC. PHONE: (919) 707-6690 FAX: (919) 250-4151	

DOCUMENT NOT CONSIDERED FINAL
UNLESS ALL SIGNATURES COMPLETED

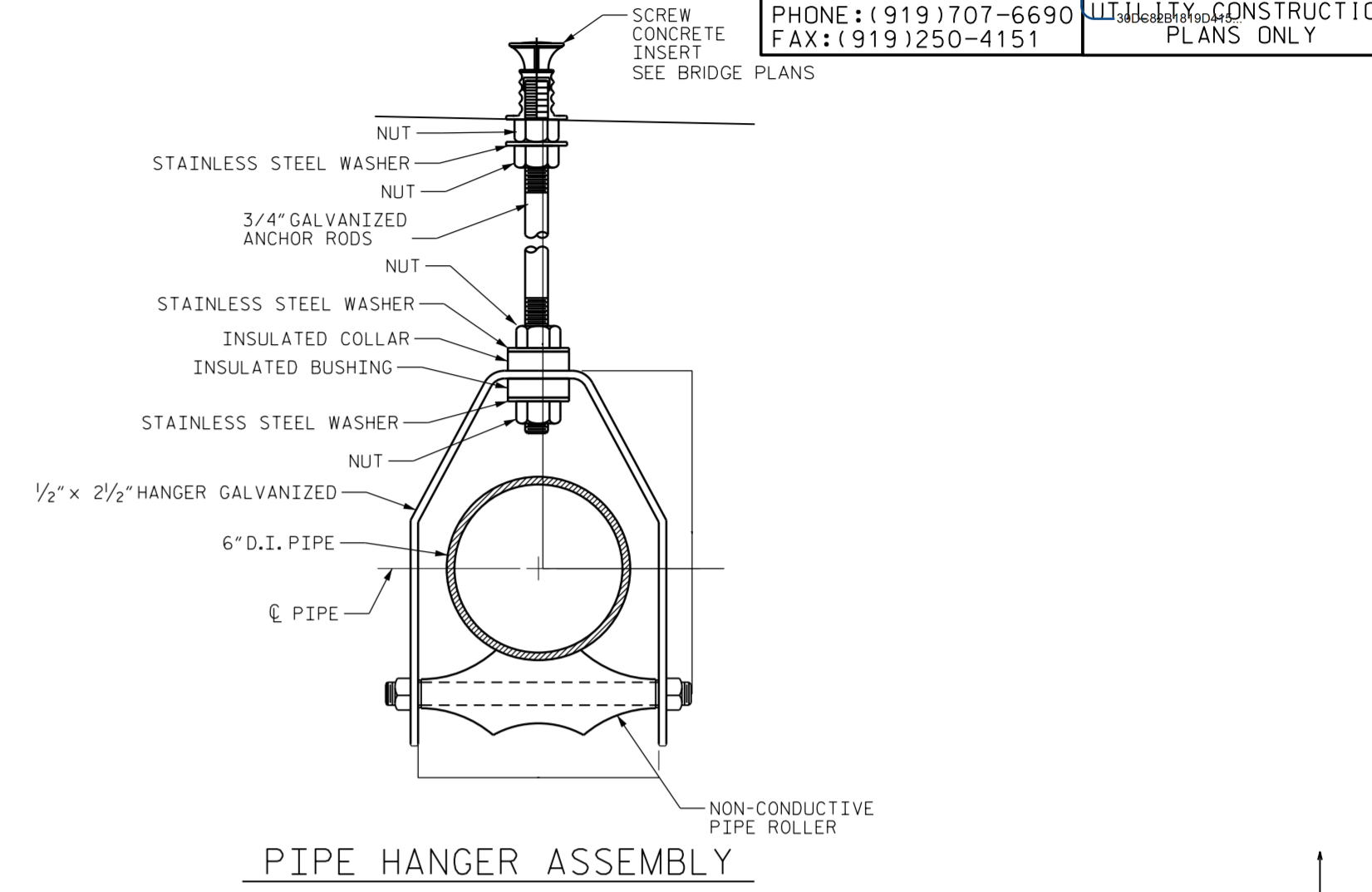


PIPE EXPANSION JOINT DETAIL
NTS

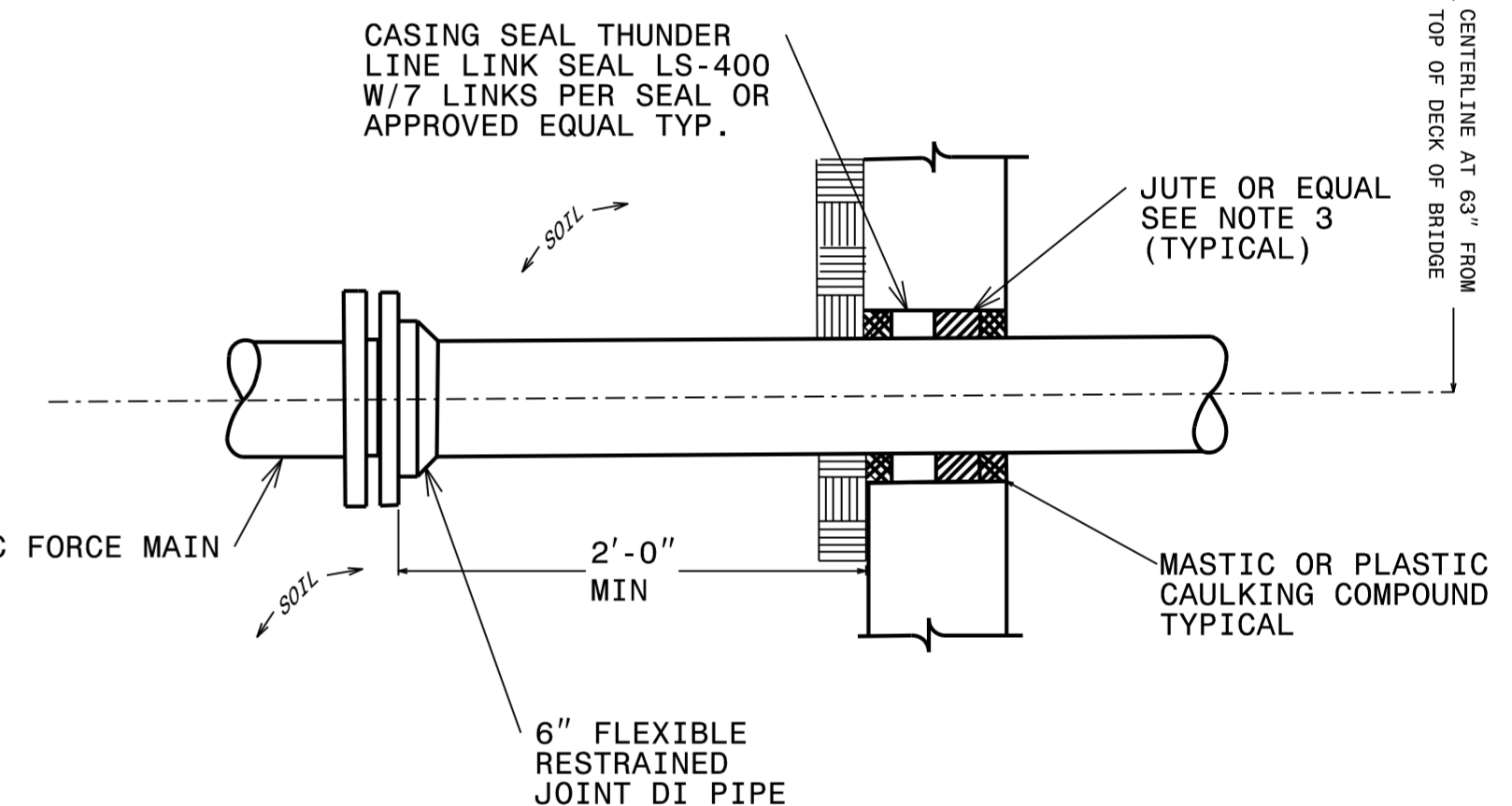
NOTE: HANGERS SHALL NOT BE PLACED CLOSER THAN 6" FROM CONCRETE BRIDGE BENTS



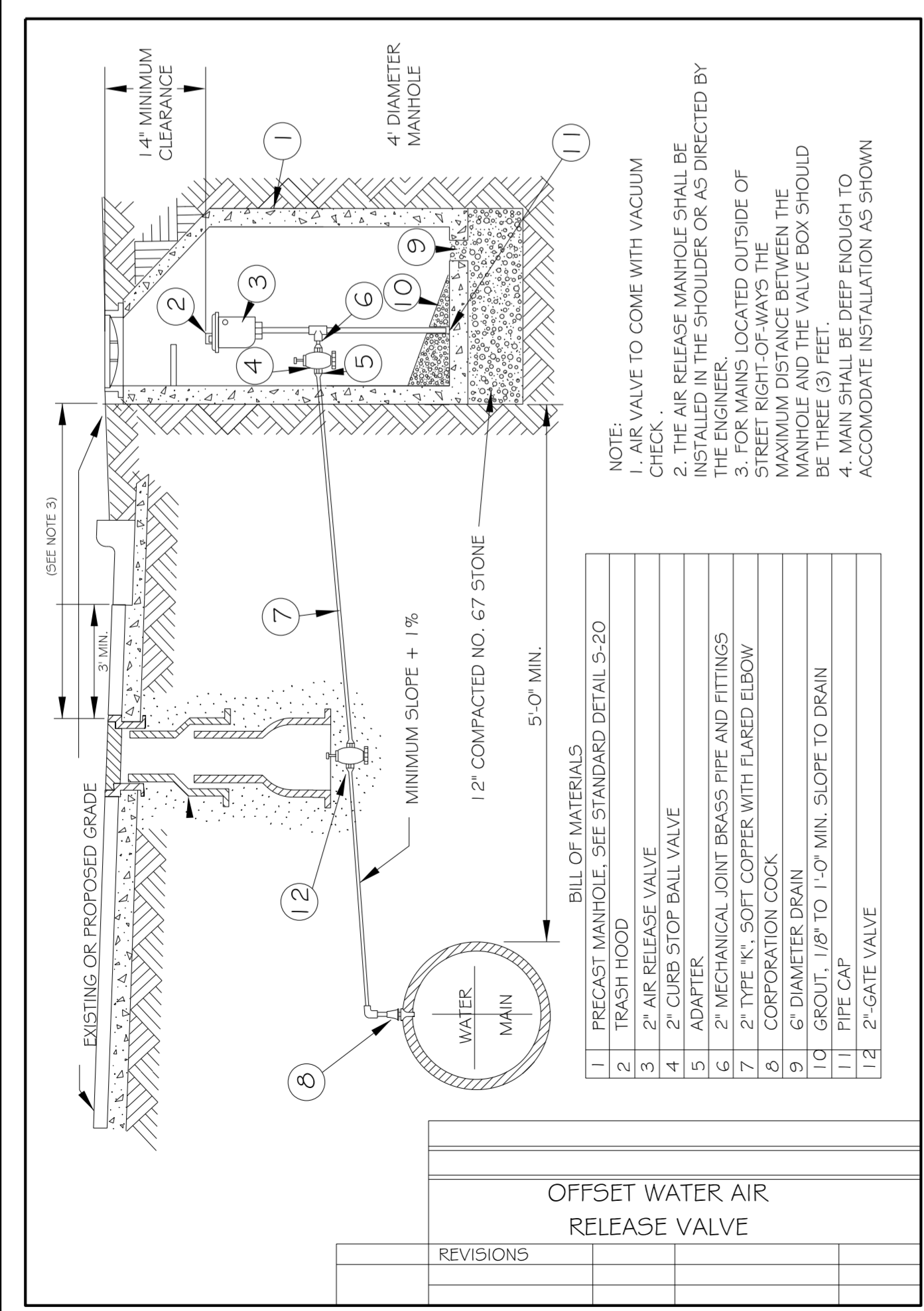
PIPE SUSPENSION CROSS SECTION
NTS



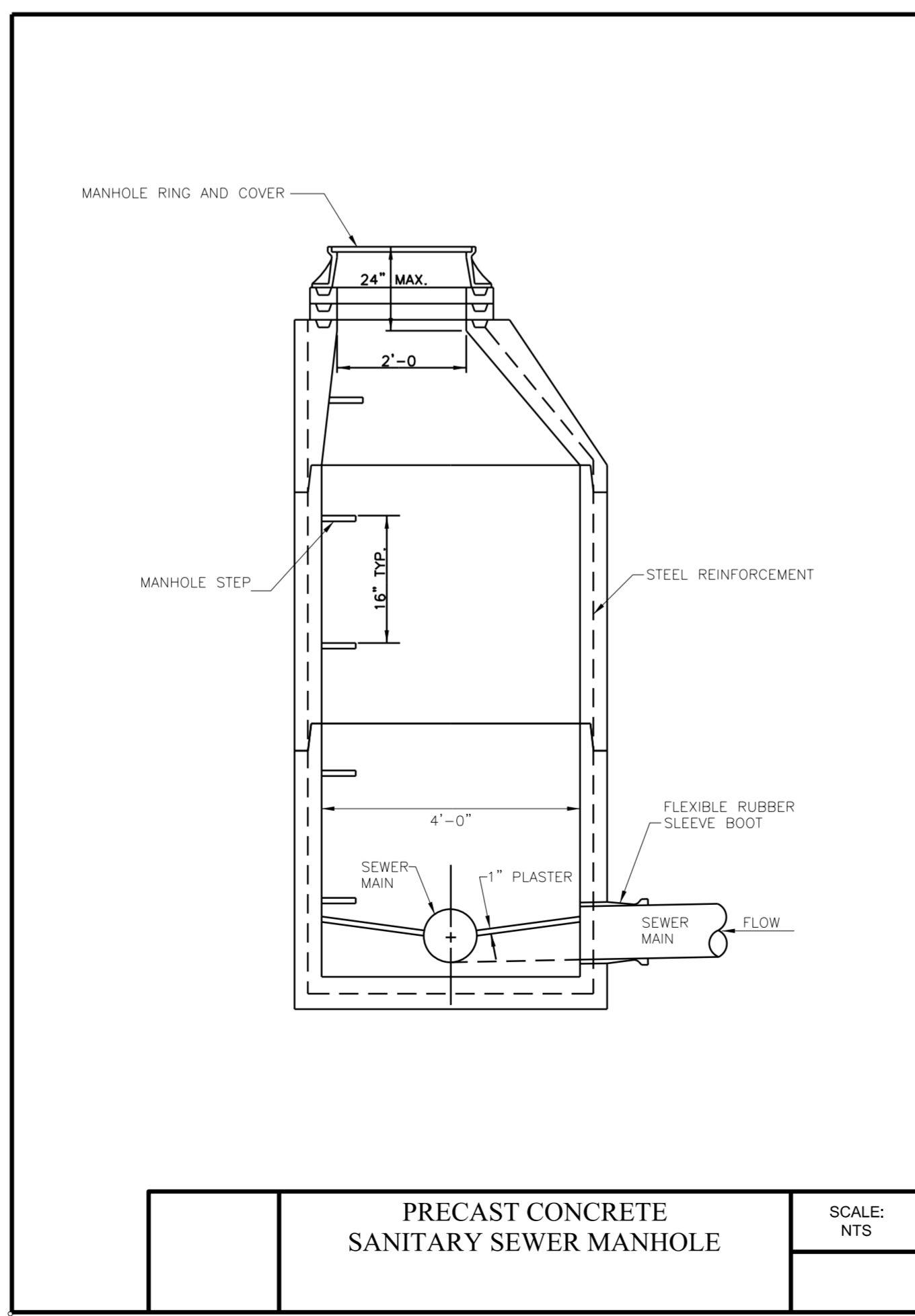
PIPE HANGER ASSEMBLY



WALL PENETRATION DETAIL
NTS

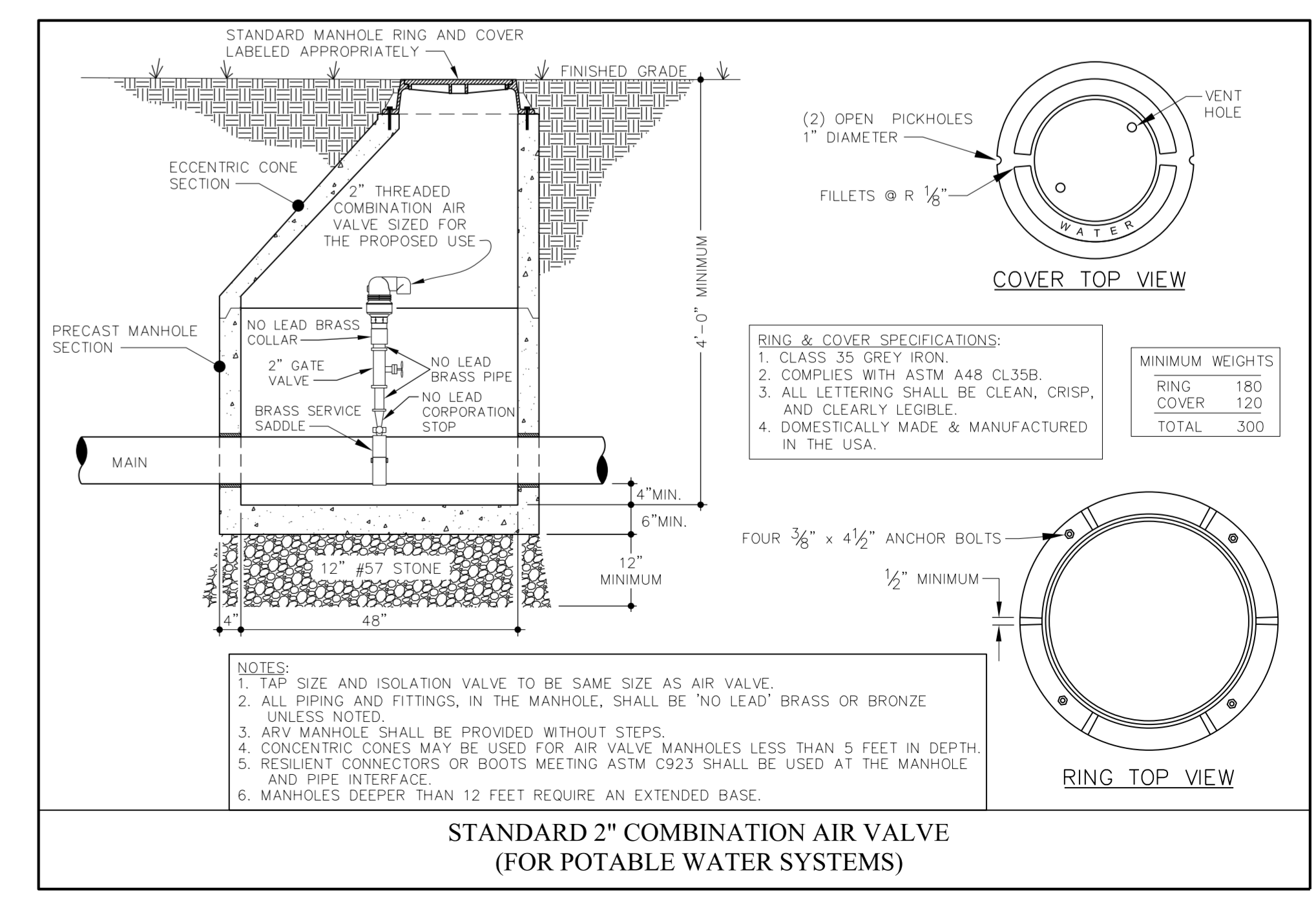


OFFSET WATER AIR RELEASE VALVE



PRECAST CONCRETE SANITARY SEWER MANHOLE

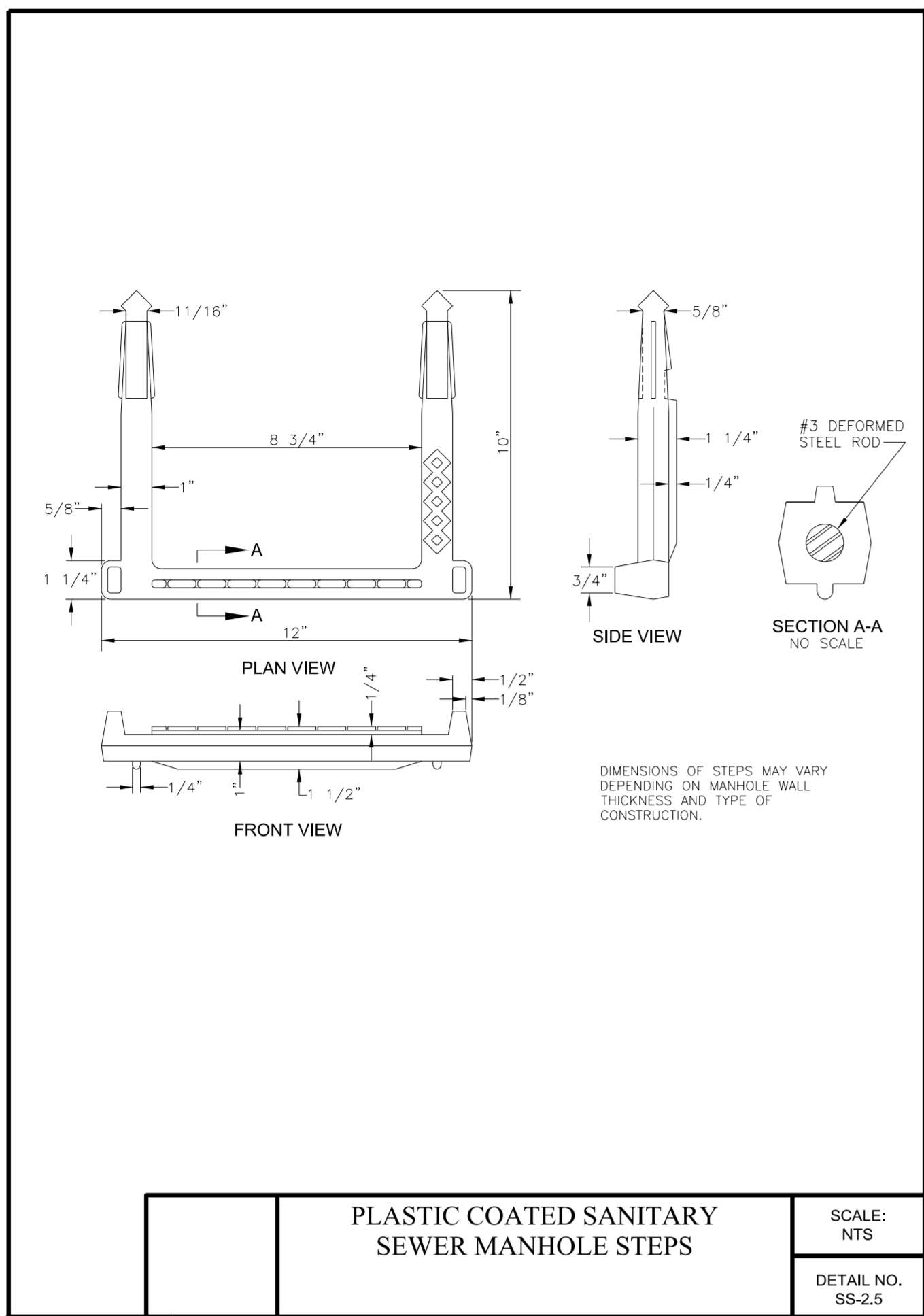
SCALE: NTS



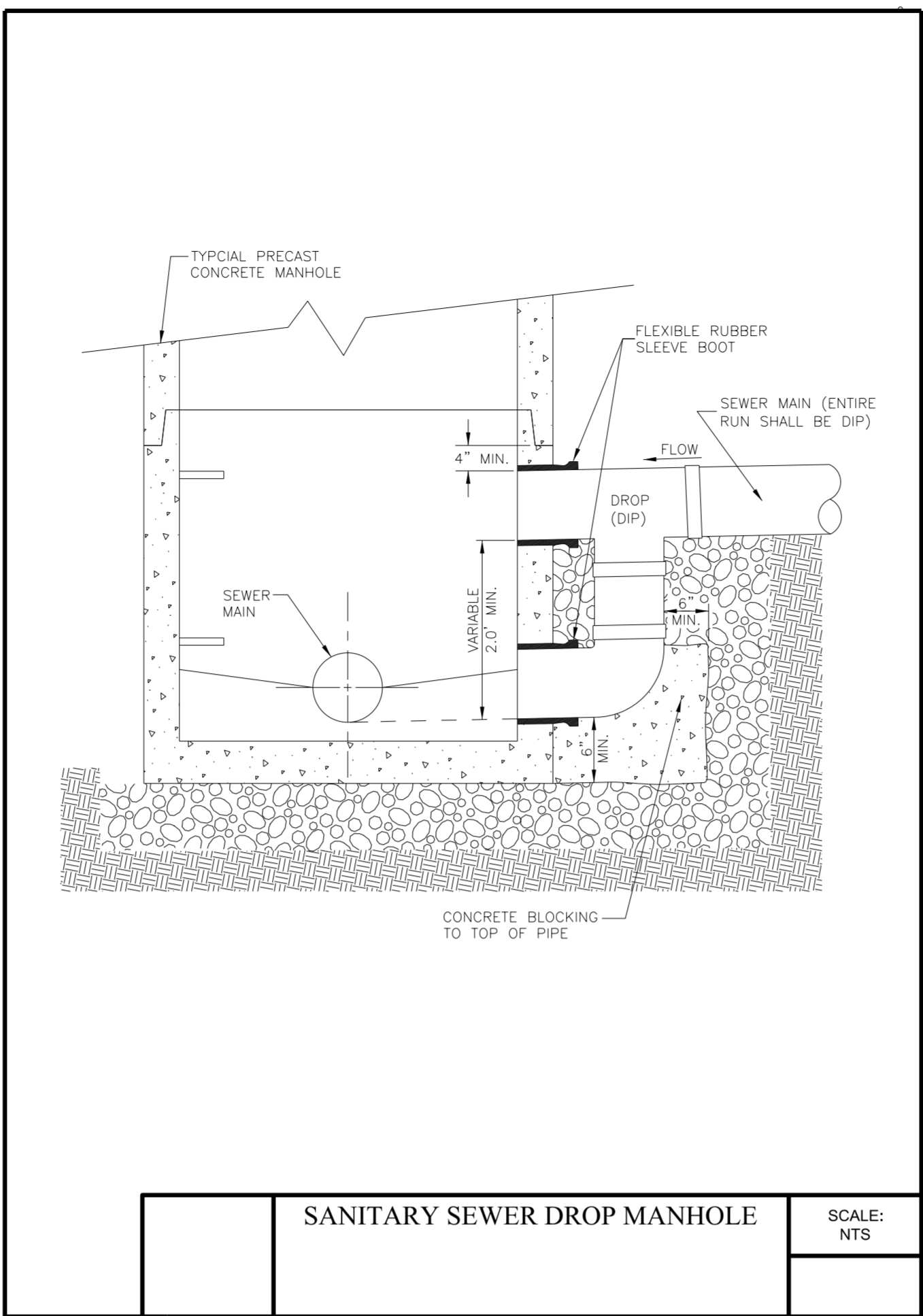
STANDARD 2" COMBINATION AIR VALVE (FOR POTABLE WATER SYSTEMS)

UTILITY CONSTRUCTION

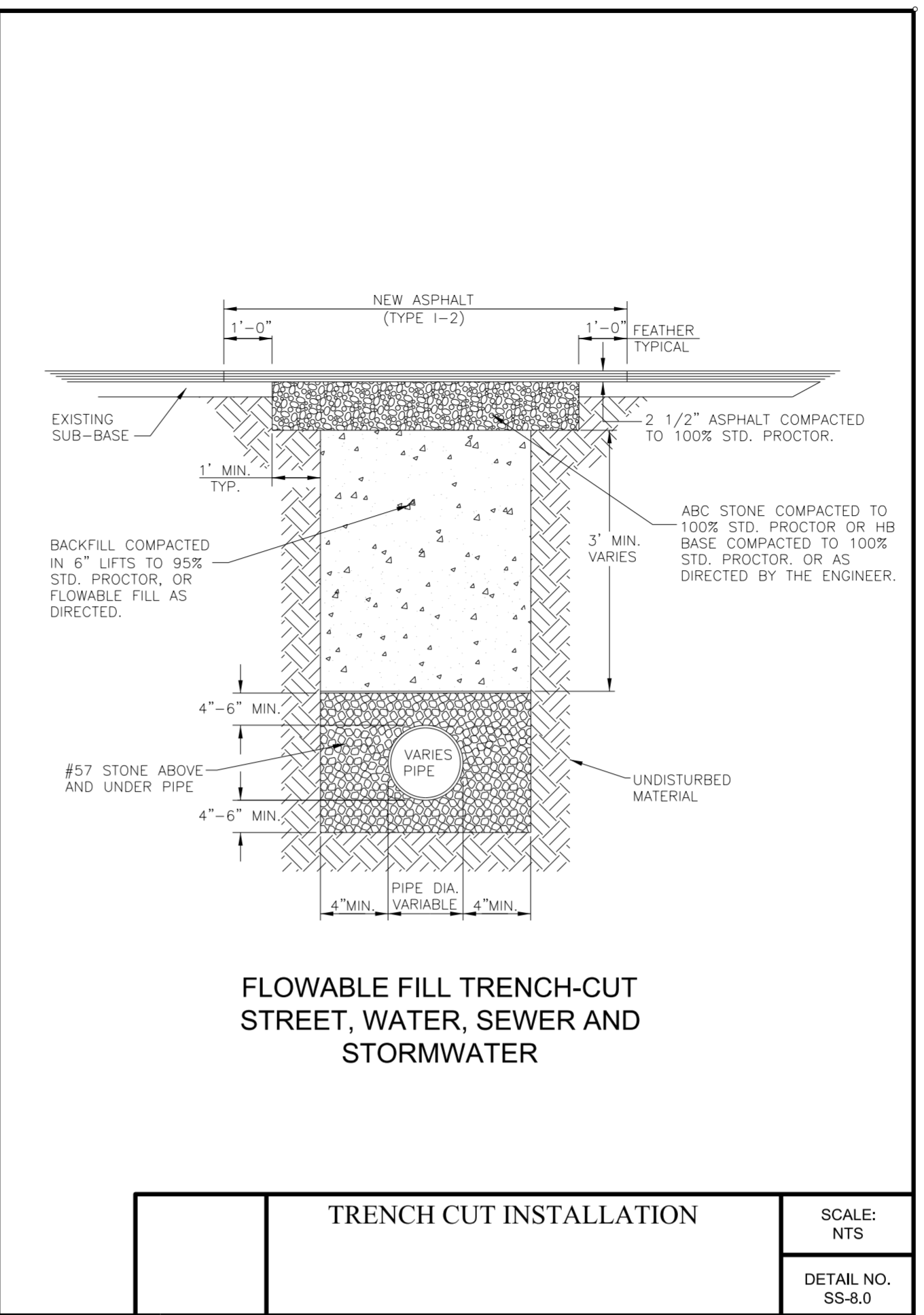
DOCUMENT NOT CONSIDERED FINAL
UNLESS ALL SIGNATURES COMPLETED



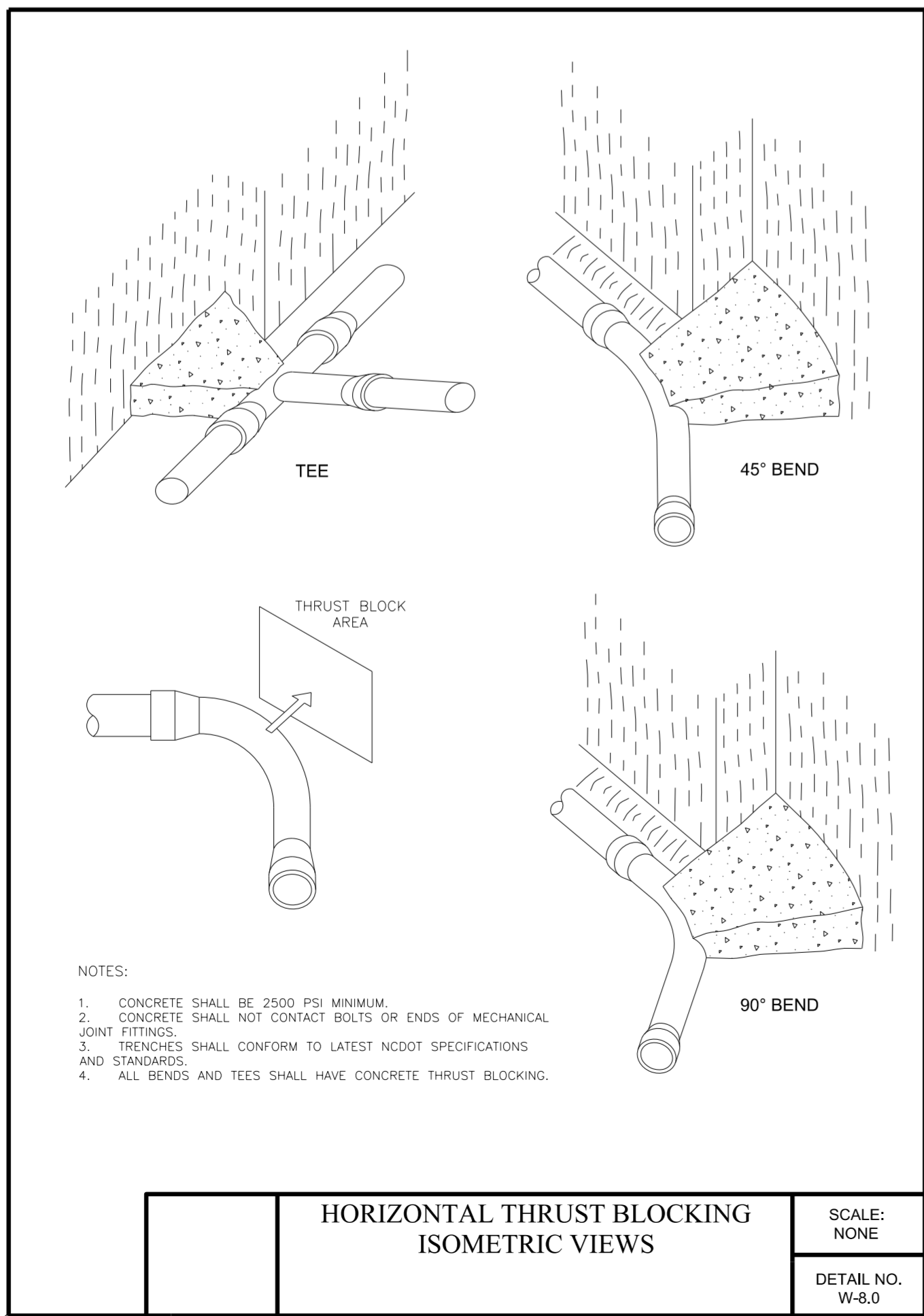
PLASTIC COATED SANITARY SEWER MANHOLE STEPS	SCALE: NTS
	DETAIL NO. SS-2.5



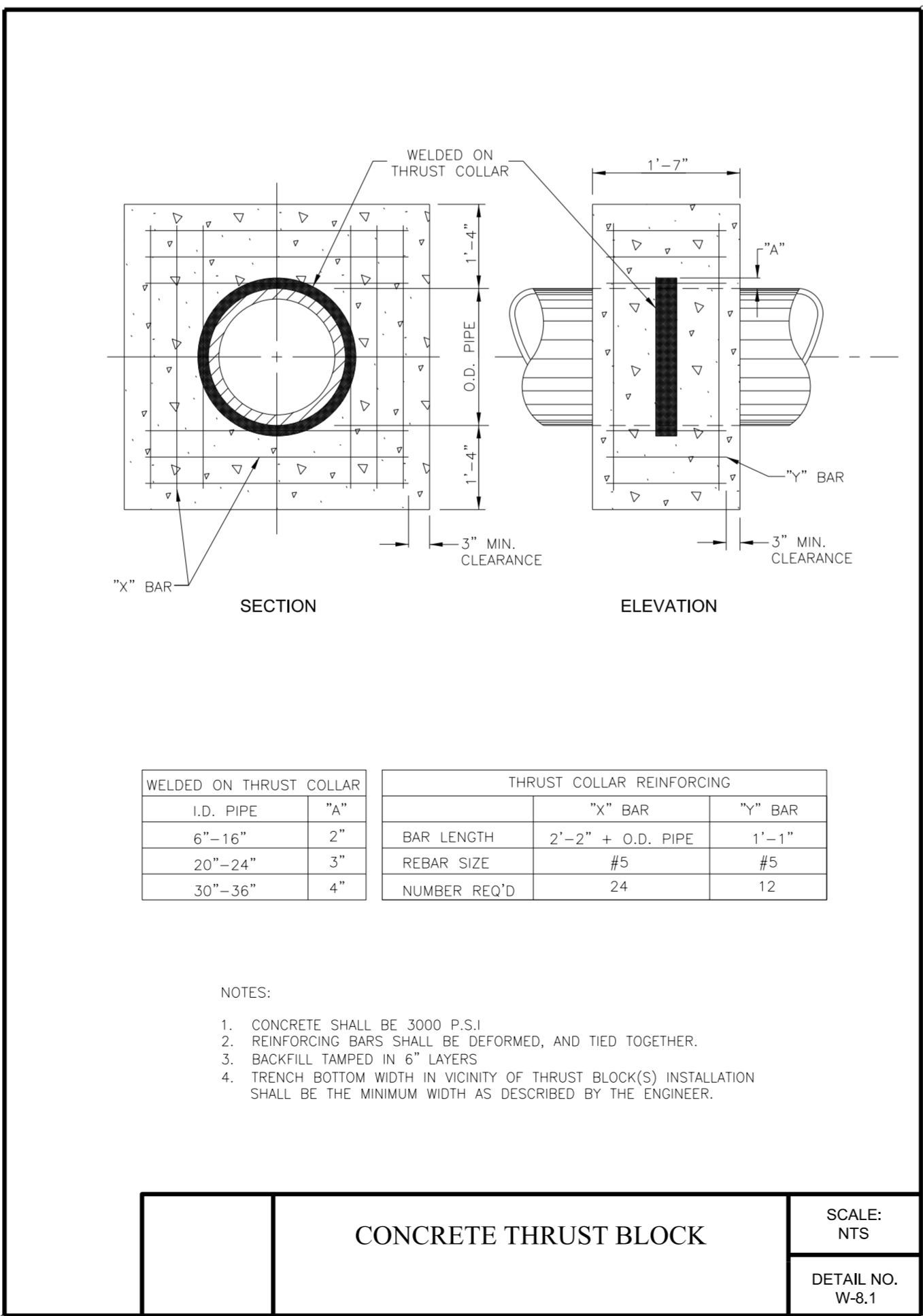
SANITARY SEWER DROP MANHOLE	SCALE: NTS
	DETAIL NO. SS-2.5



FLOWABLE FILL TRENCH-CUT STREET, WATER, SEWER AND STORMWATER	SCALE: NTS
	DETAIL NO. SS-8.0



HORIZONTAL THRUST BLOCKING ISOMETRIC VIEWS	SCALE: NONE
	DETAIL NO. W-8.0

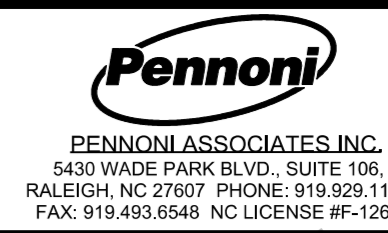


CONCRETE THRUST BLOCK	SCALE: NTS
	DETAIL NO. W-8.1

SIZE AND DEGREE OF BEND	STATIC THRUST IN POUNDS	4 LAYERS	4 LAYERS WITH DRY PACK	4 LAYERS WITH DRY PACK & COARSE SAND	4 LAYERS WITH DRY PACK & COARSE SAND & COB LEAD	4 LAYERS WITH DRY PACK & COARSE SAND & COB LEAD & COARSE SAND	4 LAYERS WITH DRY PACK & COARSE SAND & COB LEAD & COARSE SAND & COB LEAD & COARSE SAND	4 LAYERS WITH DRY PACK & COARSE SAND & COB LEAD & COARSE SAND & COB LEAD & COARSE SAND & COB LEAD & COARSE SAND	4 LAYERS WITH DRY PACK & COARSE SAND & COB LEAD & COARSE SAND & COB LEAD & COARSE SAND & COB LEAD & COARSE SAND & COB LEAD & COARSE SAND	4 LAYERS WITH DRY PACK & COARSE SAND & COB LEAD & COARSE SAND & COB LEAD & COARSE SAND & COB LEAD & COARSE SAND & COB LEAD & COARSE SAND & COB LEAD & COARSE SAND
6" PIPE										
11 1/4"	1,108	1	1	1	1	1	1	2	1	
22 1/2"	2,207	1	2	2	1	1	1	3	1	
45°	4,328	2	3	3	1	1	2	5	1	
90°	7,996	2	4	5	1	1	2	8	1	
PLUG OR TEE	5,655	2	3	4	1	1	2	6	1	
8" PIPE										
11 1/4"	1,970	1	1	2	1	1	1	2	1	
22 1/2"	3,922	1	2	3	1	1	1	4	1	
45°	7,694	2	4	5	1	1	2	8	1	
90°	14,215	4	8	9	2	2	4	15	2	
PLUG OR TEE	10,053	3	5	6	2	2	3	10	1	
12" PIPE										
11 1/4"	4,433	2	3	3	1	1	2	5	1	
22 1/2"	8,826	3	5	6	2	2	3	9	1	
45°	17,312	5	9	11	3	3	5	18	2	
90°	31,983	8	16	19	4	4	8	32	4	
PLUG OR TEE	22,619	6	12	14	3	3	6	23	3	
16" PIPE										
11 1/4"	7,881	2	4	5	1	1	2	8	1	
22 1/2"	15,691	4	8	10	2	2	4	16	2	
45°	7,694	8	16	19	4	4	8	31	4	
90°	56,861	15	29	35	8	8	15	57	6	
PLUG OR TEE	40,213	10	21	25	5	5	10	41	5	
20" PIPE										
11 1/4"	12,315	3	7	8	2	2	3	13	2	
22 1/2"	24,517	7	13	15	4	4	7	25	3	
45°	48,091	12	24	29	6	6	12	48	5	
90°	88,844	23	45	53	12	12	23	89	9	
PLUG OR TEE	62,832	16	32	38	8	8	16	63	7	
24" PIPE										
11 1/4"	17,734	5	9	11	3	3	5	18	2	
22 1/2"	35,305	9	18	22	5	5	9	36	4	
45°	69,252	18	35	42	9	9	18	70	7	
90°	127,936	32	64	77	16	16	32	128	13	
PLUG OR TEE	90,478	23	46	55	12	12	23	91	10	
30" PIPE										
11 1/4"	27,709	7	14	17	4	4	7	2	3	
22 1/2"	55,163	14	28	34	7	7	14	56	6	
45°	108,206	28	55	65	14	14	28	109	11	
90°	199,900	50	100	120	25	25	50	200	20	
PLUG OR TEE	141,372	36	71	85	18	18	36	142	15	
36" PIPE										
11 1/4"	39,901	10	20	24	5	5	10	40	4	
22 1/2"	79,435	20	40	48	10	10	20	80	8	
45°	155,816	39	78	94	20	20	39	156	16	
90°	247,855	72	144	172	36	36	72	288	29	
PLUG OR TEE	203,575	51	102	122	26	26	51	204	21	

GENERAL NOTES:
1. BASED ON TEST PRESSURE OF 200 P.S.I. ALL AREAS GIVEN IN SQUARE FEET.
2. THE TRENCH SIDE AT AN ANGLE OF 90° TO THE THRUST VECTOR.
3. USE 6"-90° BEND VALUE FOR HYDRANTS FOR ADDITIONAL SAFETY FACTORS.

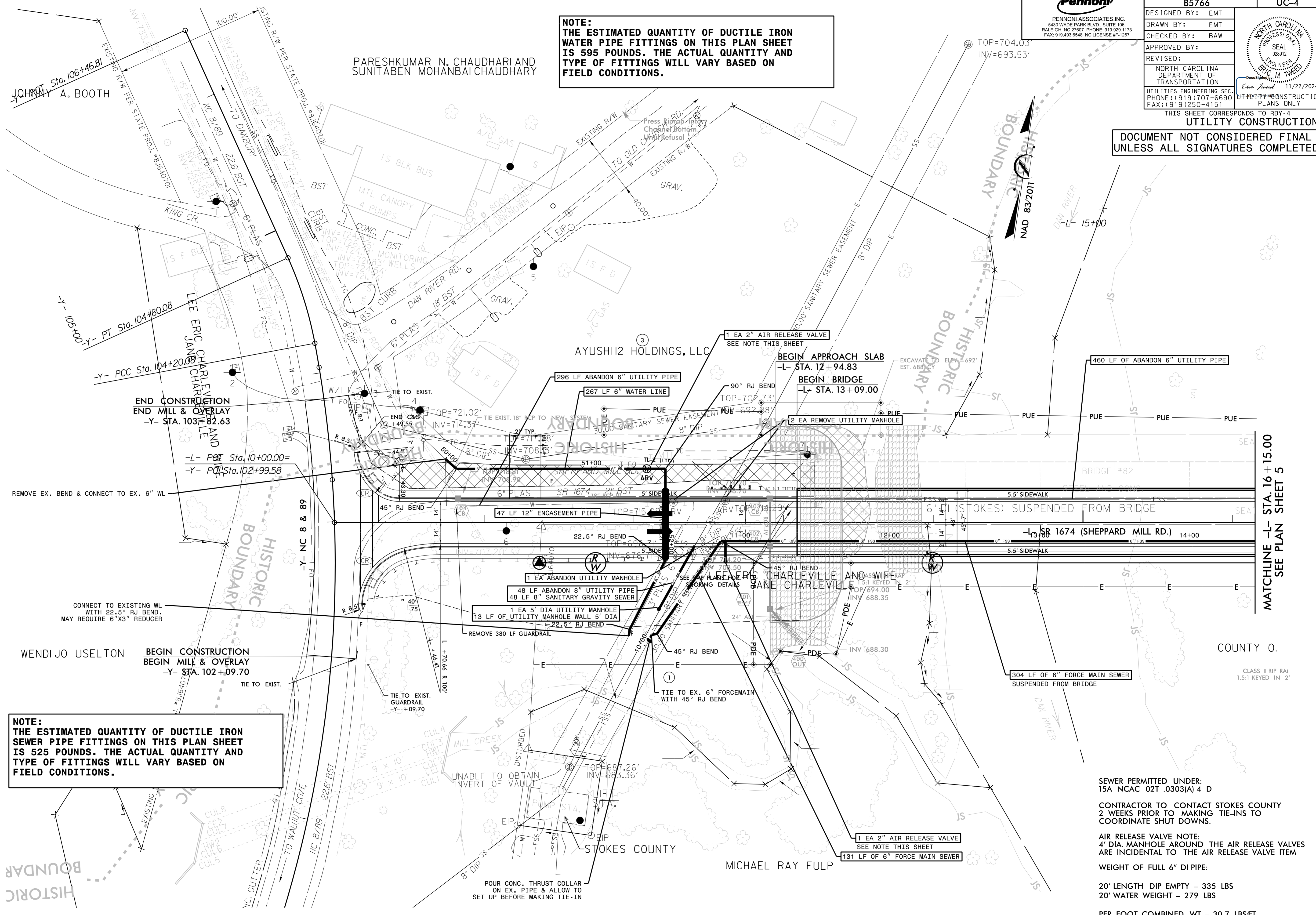
HORIZONTAL THRUST BLOCKING SCHEDULE	SCALE: NTS
	DETAIL NO. W-8.2



PROJECT REFERENCE NO.	B5766	SHEET NO.	UC-4
DESIGNED BY:	EMT		
DRAWN BY:	EMT		
CHECKED BY:	BAW		
APPROVED BY:			
REVISED:			
NORTH CAROLINA DEPARTMENT OF TRANSPORTATION UTILITIES ENGINEERING SEC. PHONE: (919) 707-6690 FAX: (919) 250-4151			

NOTE:
 THE ESTIMATED QUANTITY OF DUCTILE IRON WATER PIPE FITTINGS ON THIS PLAN SHEET IS 595 POUNDS. THE ACTUAL QUANTITY AND TYPE OF FITTINGS WILL VARY BASED ON FIELD CONDITIONS.

DOCUMENT NOT CONSIDERED FINAL UNLESS ALL SIGNATURES COMPLETED



NOTE:
 THE ESTIMATED QUANTITY OF DUCTILE IRON SEWER PIPE FITTINGS ON THIS PLAN SHEET IS 525 POUNDS. THE ACTUAL QUANTITY AND TYPE OF FITTINGS WILL VARY BASED ON FIELD CONDITIONS.

SEWER PERMITTED UNDER:
 15A NCAC 02T .0303(A) 4 D

CONTRACTOR TO CONTACT STOKES COUNTY 2 WEEKS PRIOR TO MAKING TIE-INS TO COORDINATE SHUT DOWNS.

AIR RELEASE VALVE NOTE:
 4' DIA. MANHOLE AROUND THE AIR RELEASE VALVES ARE INCIDENTAL TO THE AIR RELEASE VALVE ITEM

WEIGHT OF FULL 6" DI PIPE:
 20' LENGTH DIP EMPTY - 335 LBS
 20' WATER WEIGHT - 279 LBS
 PER FOOT COMBINED WT - 30.7 LBS/FT

MATCHLINE -L- STA. 16+15.00 SEE PLAN SHEET 5

COUNTY 0.

CLASS II RIP RA
 1.5:1 KEYED IN 2'

11/19/2024 UC-4 UC-4 Pro-J \B5766-ut-Rdy04_UC04_psh.dgn

5/14/20

Pennoni
 PENNONI ASSOCIATES, INC.
 5430 WADE PARK BLVD., SUITE 106
 RALEIGH, NC 27607 PHONE: 919.929.1173
 FAX: 919.493.6548 NC LICENSE #P-1287

PROJECT REFERENCE NO. B5766 SHEET NO. UC-5

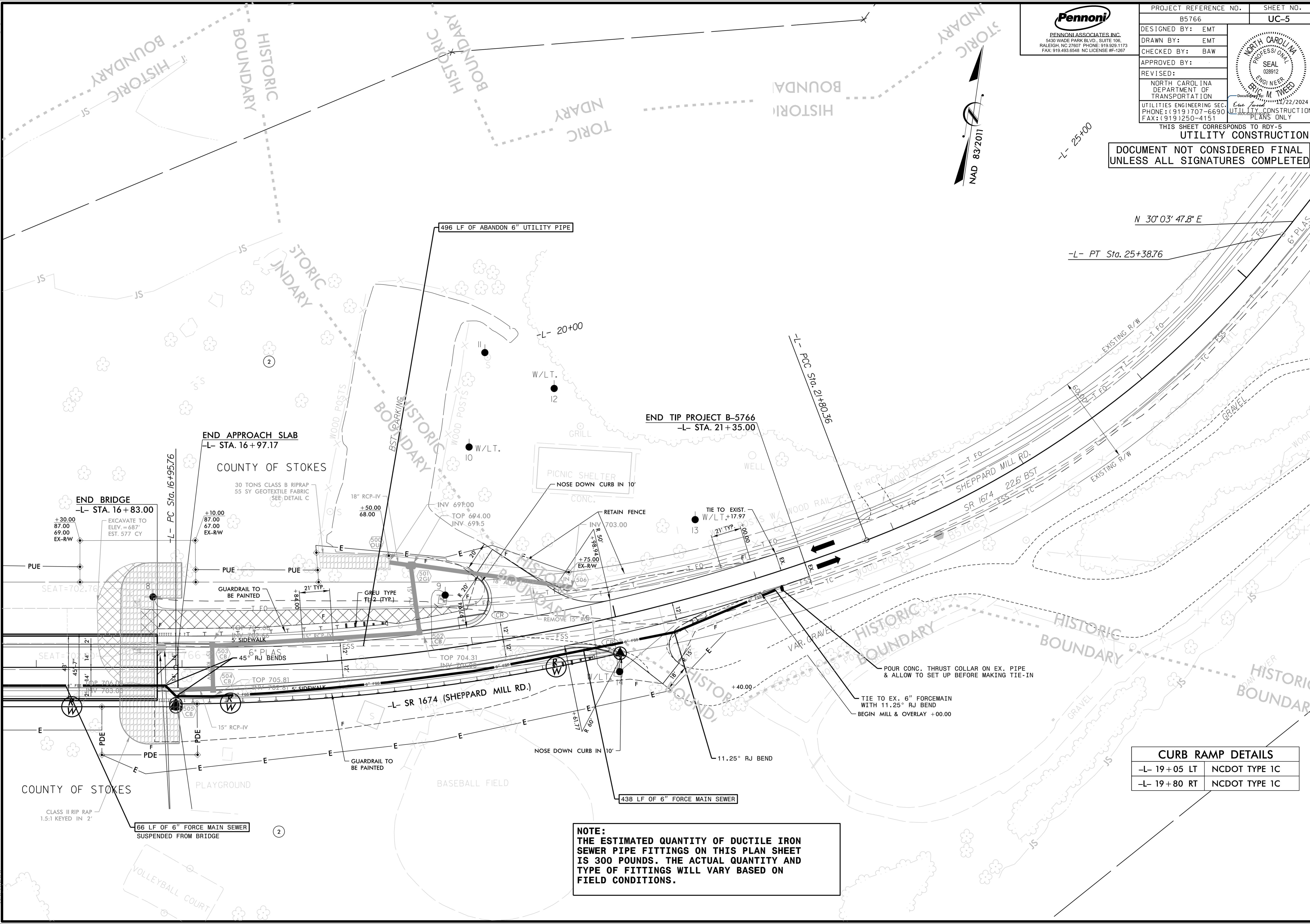
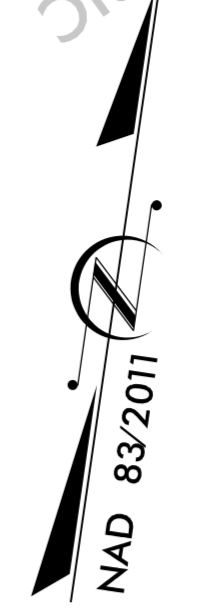
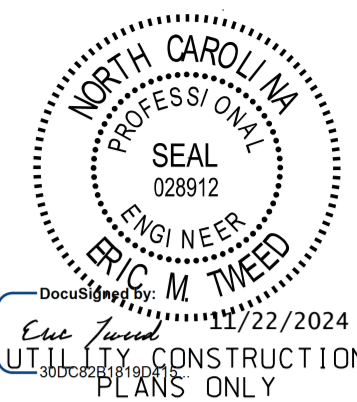
DESIGNED BY: EMT
 DRAWN BY: EMT
 CHECKED BY: BAW
 APPROVED BY:
 REVISED:

NORTH CAROLINA DEPARTMENT OF TRANSPORTATION

UTILITIES ENGINEERING SEC. PHONE: (919) 707-6690 FAX: (919) 750-4151

THIS SHEET CORRESPONDS TO RDU-5 UTILITY CONSTRUCTION

DOCUMENT NOT CONSIDERED FINAL UNLESS ALL SIGNATURES COMPLETED



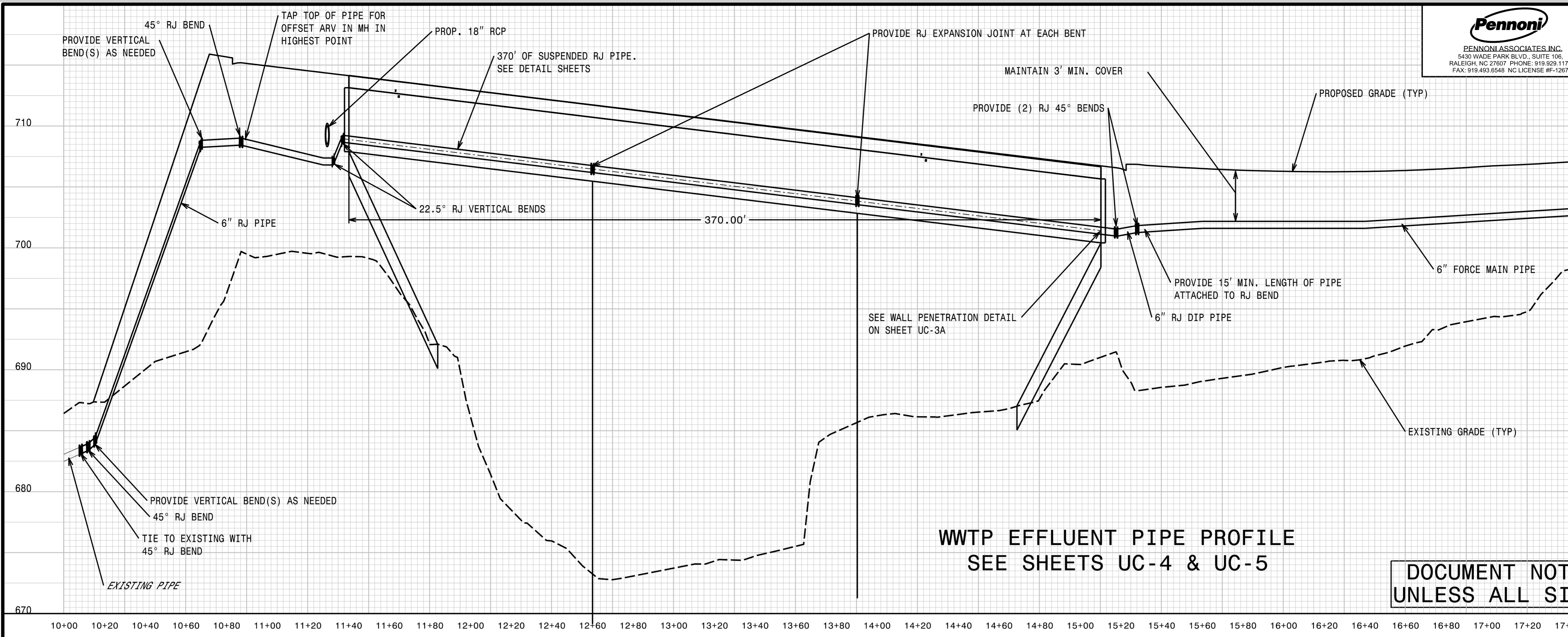
CURB RAMP DETAILS	
-L- 19+05 LT	NCDOT TYPE 1C
-L- 19+80 RT	NCDOT TYPE 1C

NOTE:
 THE ESTIMATED QUANTITY OF DUCTILE IRON SEWER PIPE FITTINGS ON THIS PLAN SHEET IS 300 POUNDS. THE ACTUAL QUANTITY AND TYPE OF FITTINGS WILL VARY BASED ON FIELD CONDITIONS.

10/3/2024
 I:\projects\Engineering\UCN\Projects\B5766\ut_Rd\05_UC05_psh.dgn
 EMT

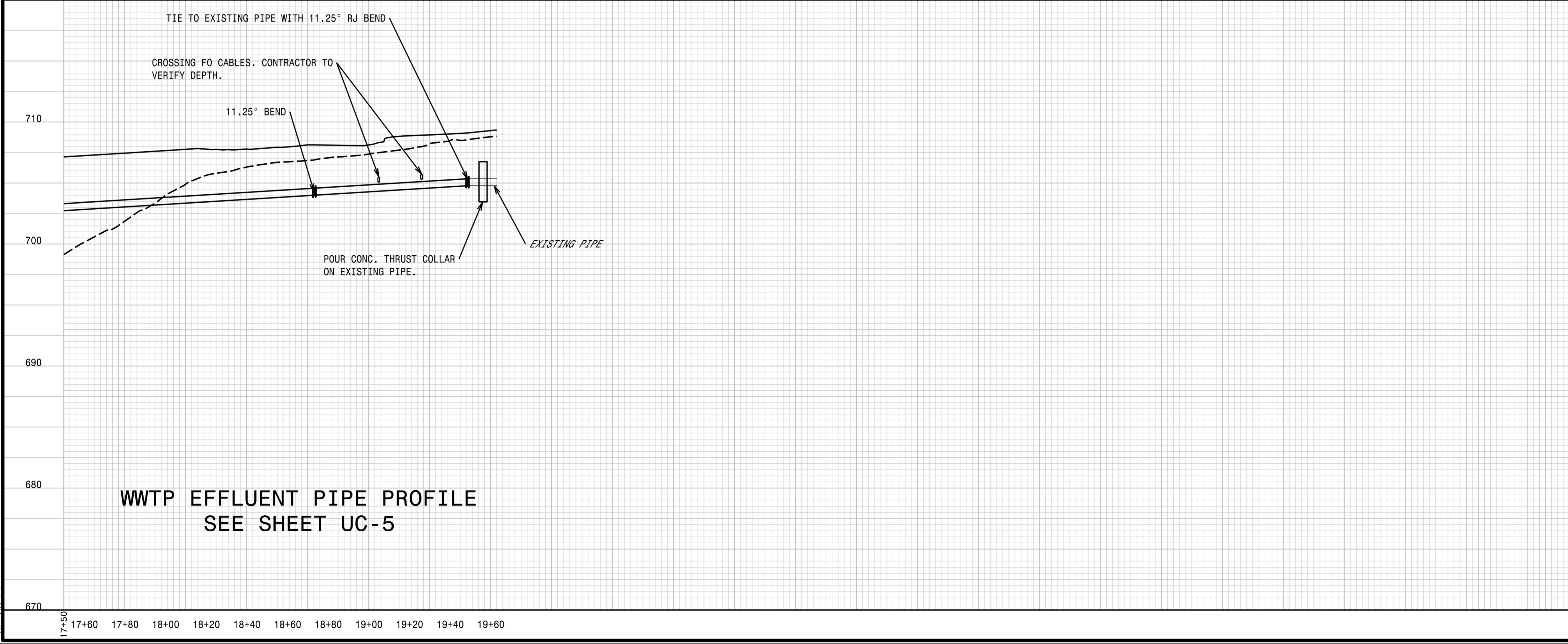


PROJECT REFERENCE NO.	B5766	SHEET NO.	UC-6
DESIGNED BY:	EMT		
DRAWN BY:	LMS		
CHECKED BY:			
APPROVED BY:			
REVISED:			
NORTH CAROLINA DEPARTMENT OF TRANSPORTATION		UTILITIES ENGINEERING SEC. PHONE: (919) 707-6690 FAX: (919) 250-4151	



SEE CONTINUATION BELOW

DOCUMENT NOT CONSIDERED FINAL UNLESS ALL SIGNATURES COMPLETED



8/29/2024
H:\Utilities\Engineering\UC\Proj\B5766_ut_pfl_UC06.dgn
USER:EMT



PENNONI ASSOCIATES, INC.
5430 WADE PARK BLVD., SUITE 106,
RALEIGH, NC 27607 PHONE: 919.929.1173
FAX: 919.493.8548 NC LICENSE #E-1267

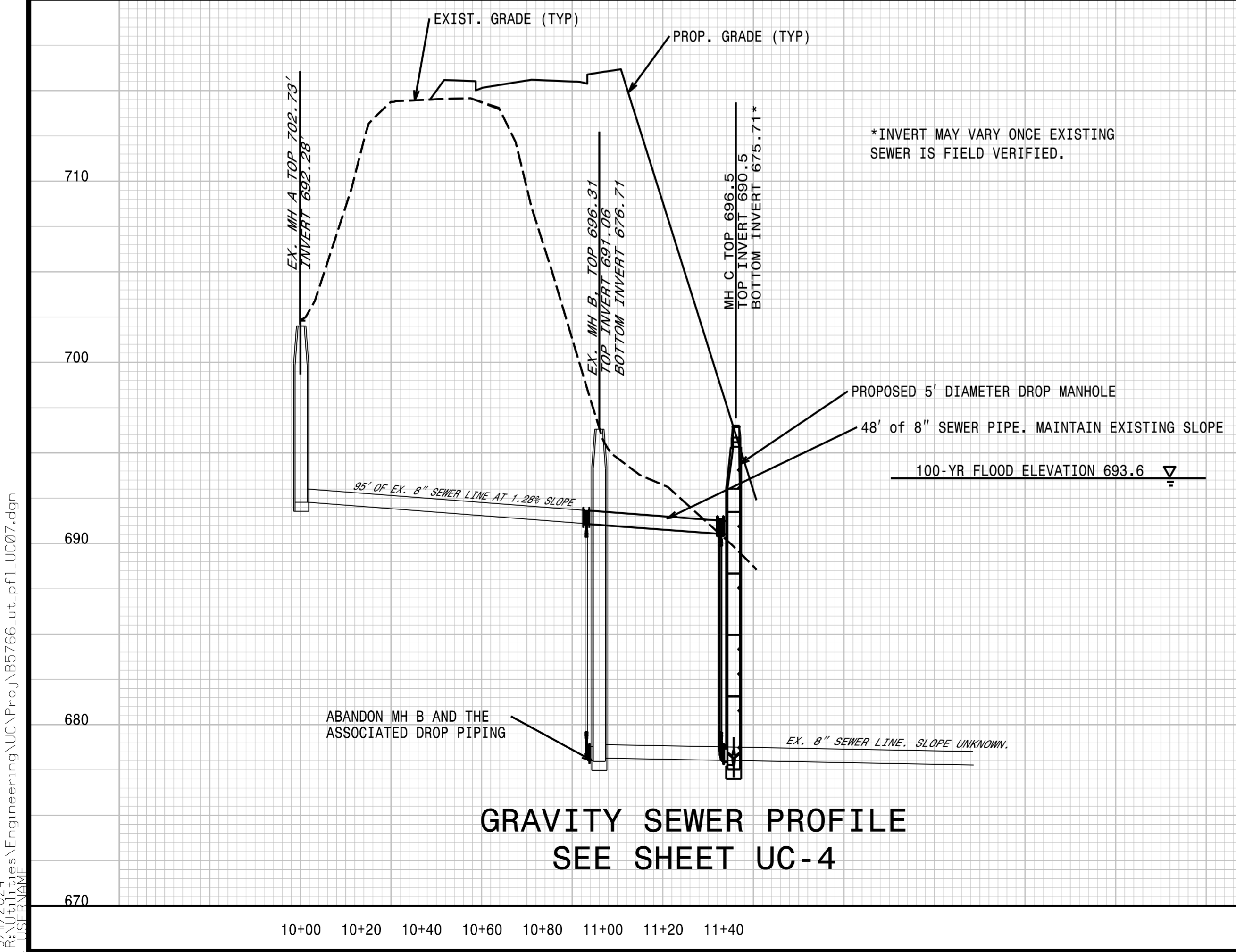
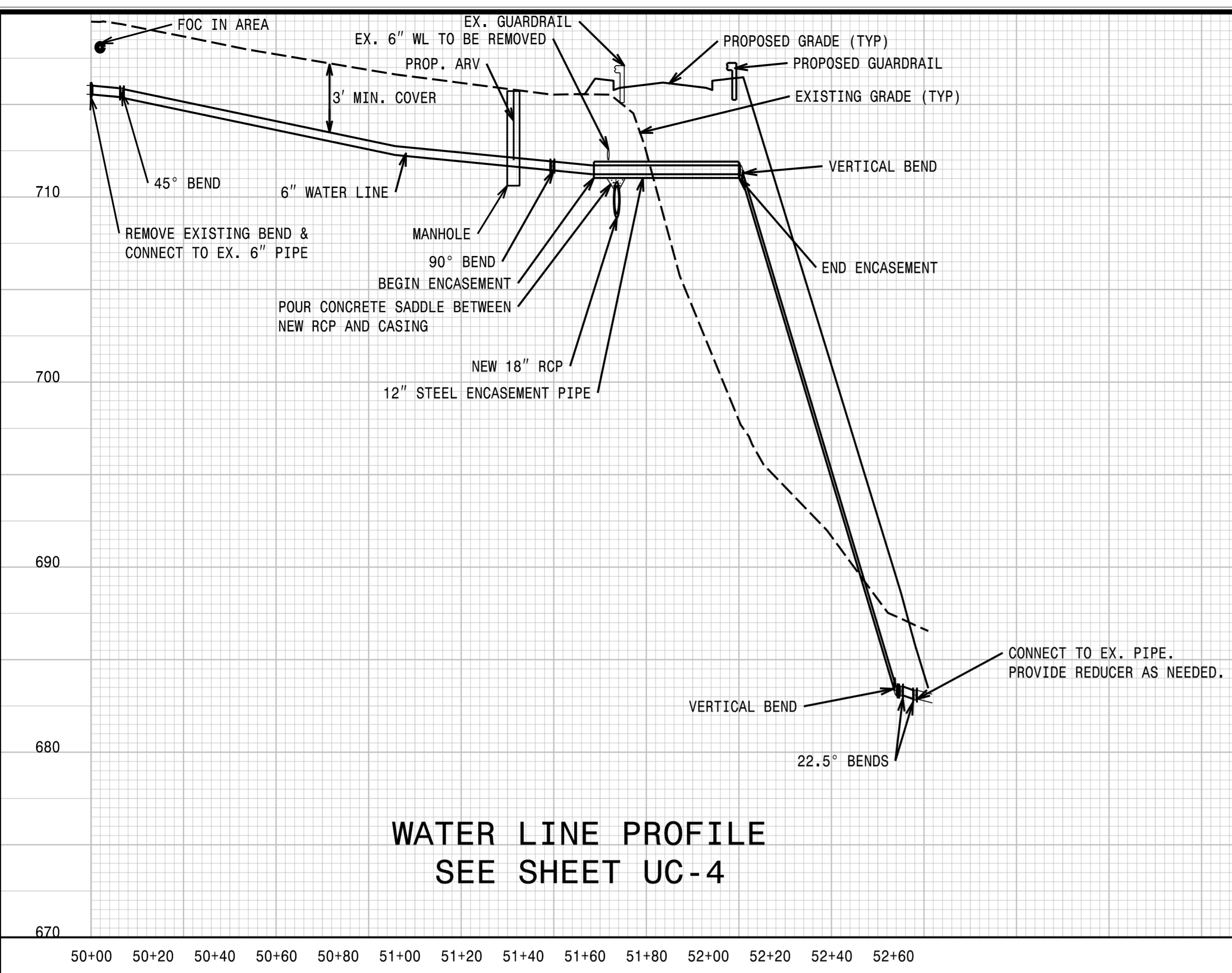
PROJECT REFERENCE NO.	B5766	SHEET NO.	UC-7
DESIGNED BY:	EMT		
DRAWN BY:	LMS		
CHECKED BY:			
APPROVED BY:			
REVISED/DESIGNED BY:		NORTH CAROLINA DEPARTMENT OF TRANSPORTATION UTILITIES ENGINEERING SEC. PHONE: (919) 707-6690 FAX: (919) 250-4151	

11/22/2024
CONSTRUCTION
PLANS ONLY

UTILITY CONSTRUCTION

**DOCUMENT NOT CONSIDERED FINAL
UNLESS ALL SIGNATURES COMPLETED**

5/28/99



2/1/2024
R:\SERVICES\Engineering\UC\Proj\B5766.ut.pfl_UC07.dgn