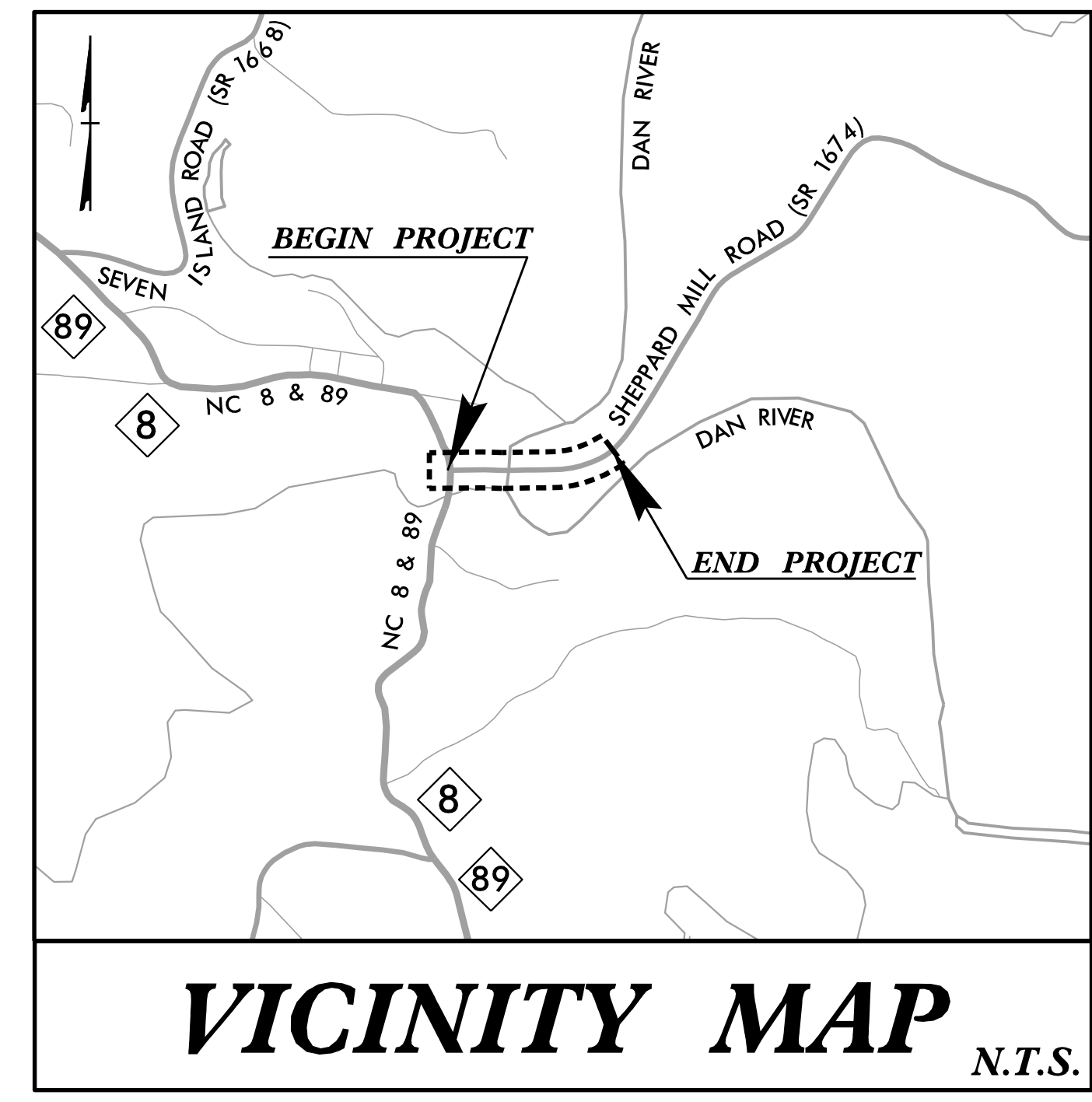


09, 08/2019

TIP PROJECT: B-5766

CONTRACT: C204978

STATE	STATE PROJECT REFERENCE NO.	SHEET NO.	TOTAL SHEETS
N.C.	B-5766	EC-1	
STATE PROJ. NO.	F.A. PROJ. NO.	DESCRIPTION	
45722.1.3	N/A	PE	
45722.2.1	N/A	R/W	
45722.2.2	N/A	UTIL	
45722.3.1	N/A	CONST.	



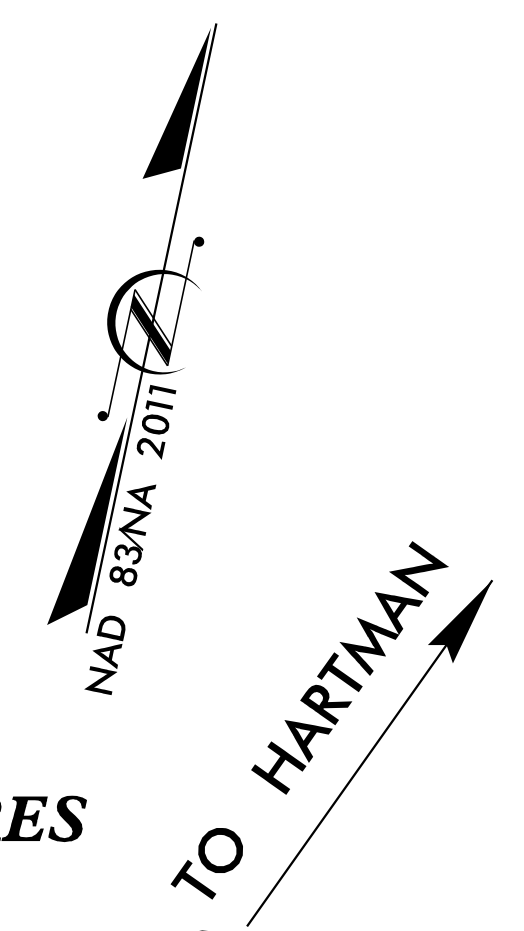
STATE OF NORTH CAROLINA
DIVISION OF HIGHWAYS

PLAN FOR PROPOSED
HIGHWAY EROSION CONTROL

STOKES COUNTY

LOCATION: BRIDGE NO. 82 OVER DAN RIVER ON
SR 1674 (SHEPPARD MILL ROAD)
DANBURY, NORTH CAROLINA

TYPE OF WORK: GRADING, PAVING, DRAINAGE, & STRUCTURES



TO DANBURY

EC-4, EC-6

EC-5, EC-7

THIS PROJECT HAS BEEN DESIGNED TO SENSITIVE WATERSHED STANDARDS.

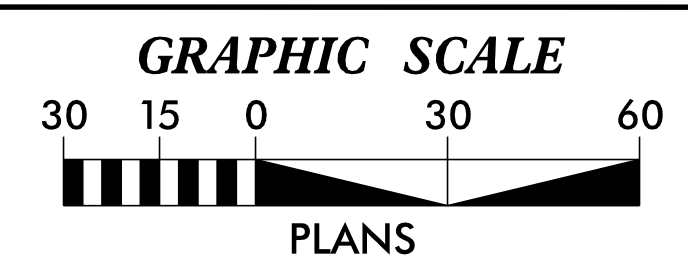
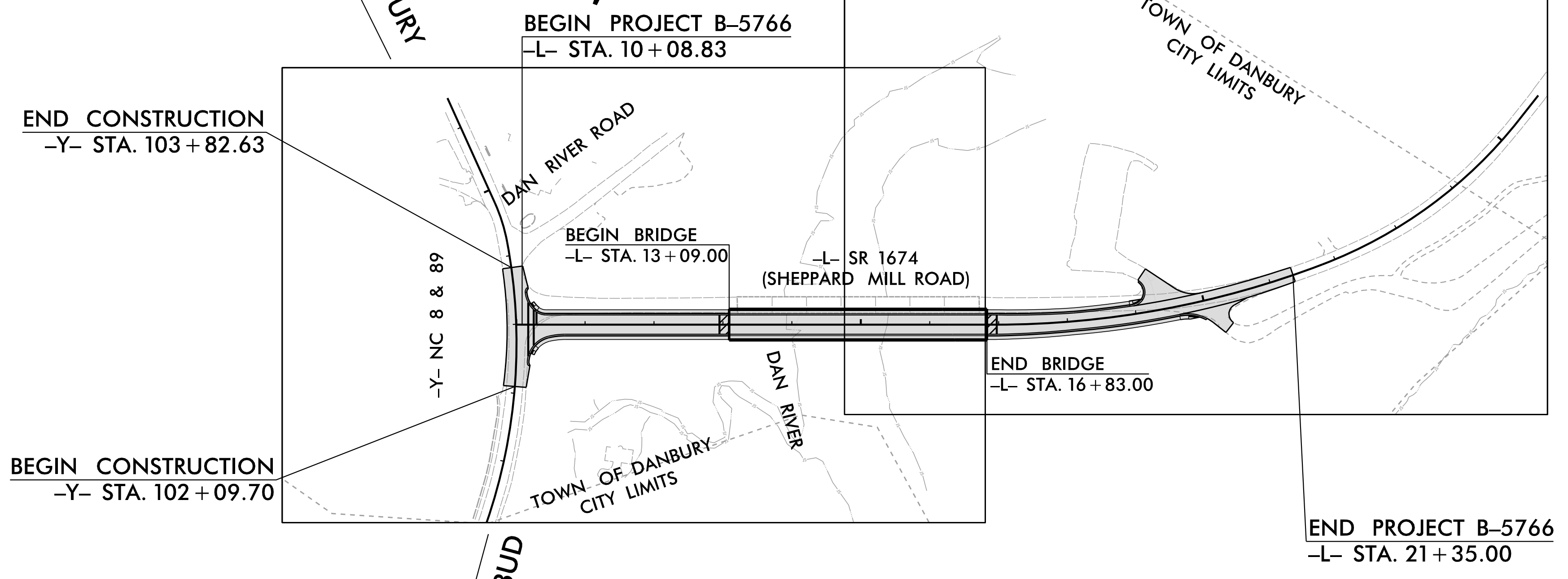
ENVIRONMENTALLY SENSITIVE AREA(S) EXIST ON THIS PROJECT
Refer To E. C. Special Provisions for Special Considerations.

THIS PROJECT CONTAINS EROSION CONTROL PLANS FOR CLEARING AND GRUBBING PHASE OF CONSTRUCTION.

RECEIVING WATERS:
DAN RIVER
CLASS: WS-V
MILL CREEK
CLASS: C

ROANOKE RIVER BASIN
DISTURBED AREA = 2.2 AC.

THIS PROJECT IS WITHIN THE MUNICIPAL BUANDARIES OF DANBURY.
CLEARING ON THIS PROJECT SHALL BE PERFORMED TO THE LIMITS ESTABLISHED BY METHOD III



THESE EROSION AND SEDIMENT CONTROL PLANS COMPLY WITH THE REGULATIONS SET FORTH BY THE NCG-010000 GENERAL STORMWATER CONSTRUCTION PERMIT ISSUED BY THE NORTH CAROLINA DEPARTMENT OF ENVIRONMENTAL QUALITY DIVISION OF ENERGY, MINERAL, AND LAND RESOURCES.



Prepared in the Office of:

DRMP, INC.

5808 Faringdon Place Raleigh, NC 27609

2024 STANDARD SPECIFICATIONS

Designed by:

FORREST N. BROOKS, P.E. 4039
NAME LEVEL III CERTIFICATION NO.

Roadway Standard Drawings
The roadway english standards as appear in "Roadway Standard Drawings" - Roadway Design Unit - N.C. Department of Transportation - Raleigh, N.C., dated January 2024 and the latest revision thereto are applicable to this project and by reference hereby are considered a part of these plans.

11/7/2024
I:\B5766-EC-t.sh.dgn
User: kforbes

DIVISION OF HIGHWAYS STATE OF NORTH CAROLINA

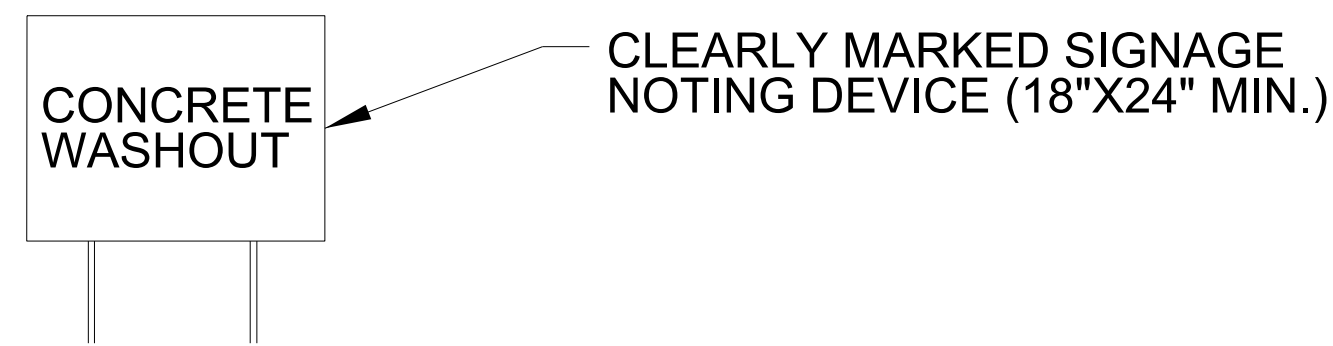
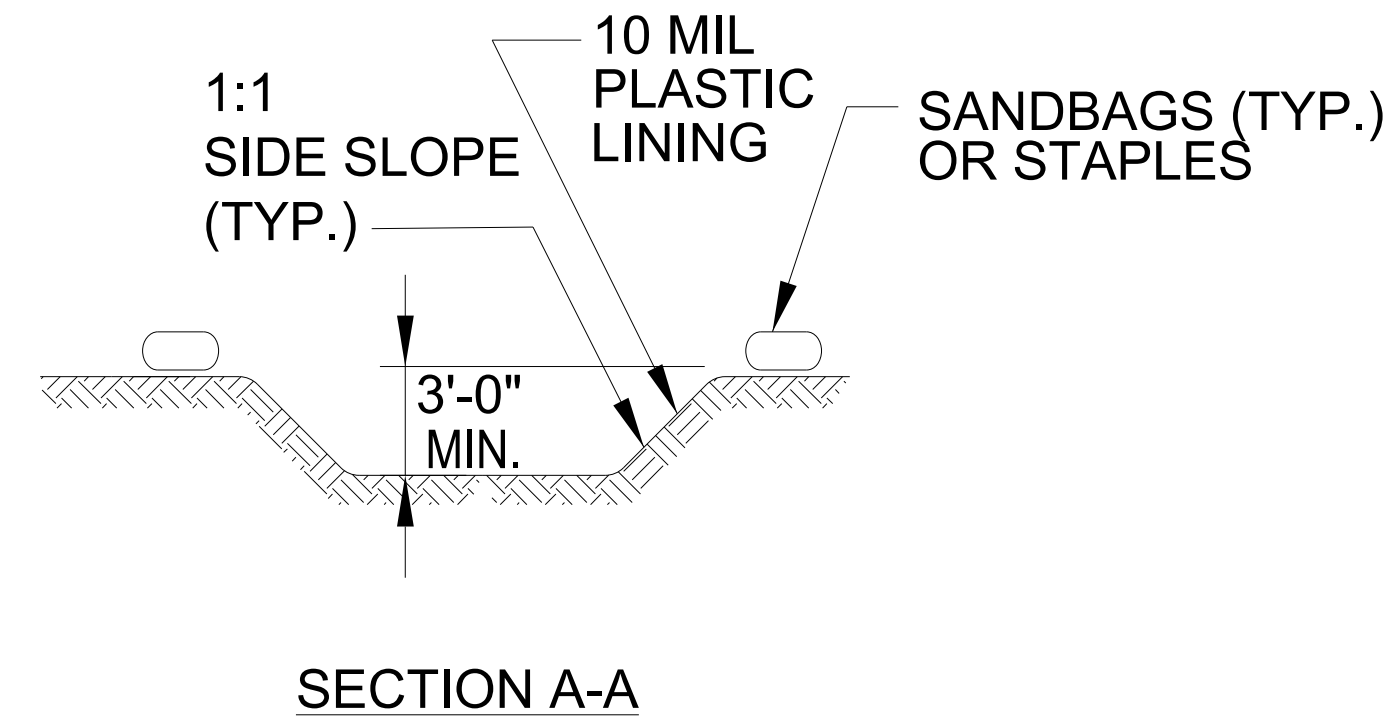
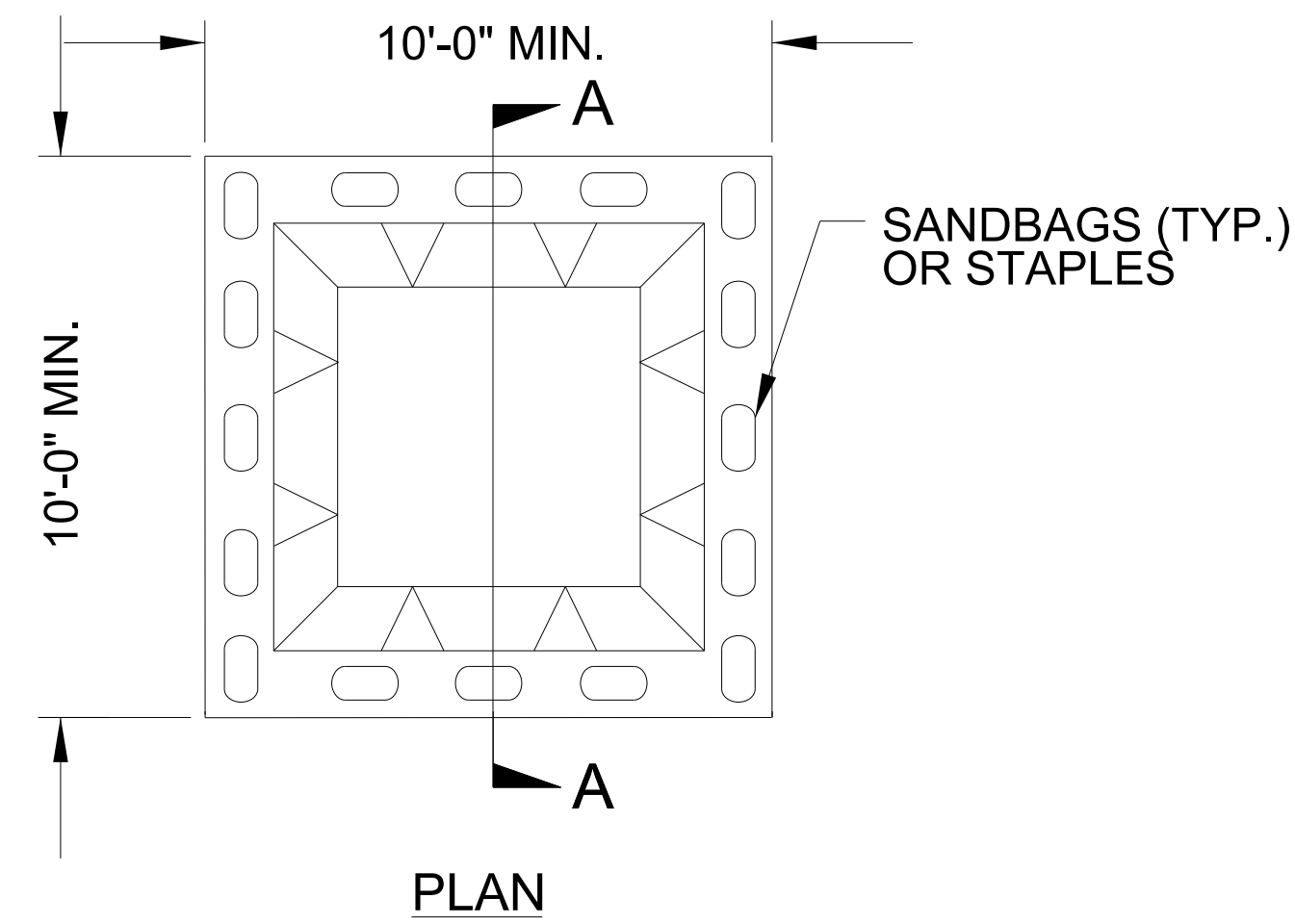
DRMP <small>DRMP, INC. 5008 FARMINGTON PLACE RALEIGH, NC 27609 (919) 872-5115</small>	<small>NC LICENSE NO. F-1524 www.drmp.com</small>
PROJECT REFERENCE NO. B-5766	SHEET NO. EC-2
RW SHEET NO.	
FORREST N. BROOKS, P.E. LEVEL III NAME	
4039 LEVEL III CERTIFICATION NO.	

EROSION & SEDIMENT CONTROL LEGEND

Std. #	Description	Symbol	Std. #	Description	Symbol
1605.01	Temporary Silt Fence		1633.01	Temporary Rock Silt Check Type A	
1606.01	Special Sediment Control Fence		1633.02	Temporary Rock Silt Check Type B	
1622.01	Temporary Berms and Slope Drains		1633.03	Temporary Rock Silt Check Type A with Excelsior Matting and Flocculant	
1630.02	Silt Basin Type B		1634.01	Temporary Rock Sediment Dam Type A	
1630.03	Temporary Silt Ditch		1634.02	Temporary Rock Sediment Dam Type B	
1630.04	Stilling Basin		1635.01	Rock Pipe Inlet Sediment Trap Type A	
1630.05	Temporary Diversion		1635.02	Rock Pipe Inlet Sediment Trap Type B	
1630.06	Special Stilling Basin		1636.01	Excelsior Wattle Check	
1630.07	Skimmer Basin		1636.01	Excelsior Wattle Check with Flocculant	
1630.08	Tiered Skimmer Basin		1636.01	Coir Fiber Wattle Check	
1630.09	Earthen Dam with Skimmer		1636.01	Coir Fiber Wattle Check with Flocculant	
	Infiltration Basin		1636.02	Silt Fence Excelsior Wattle Break	
	Rock Inlet Sediment Trap:			Silt Fence Coir Fiber Wattle Break	
1632.01	Type A		1636.03	Excelsior Wattle Barrier	
1632.02	Type B		1636.03	Coir Fiber Wattle Barrier	
1632.03	Type C				

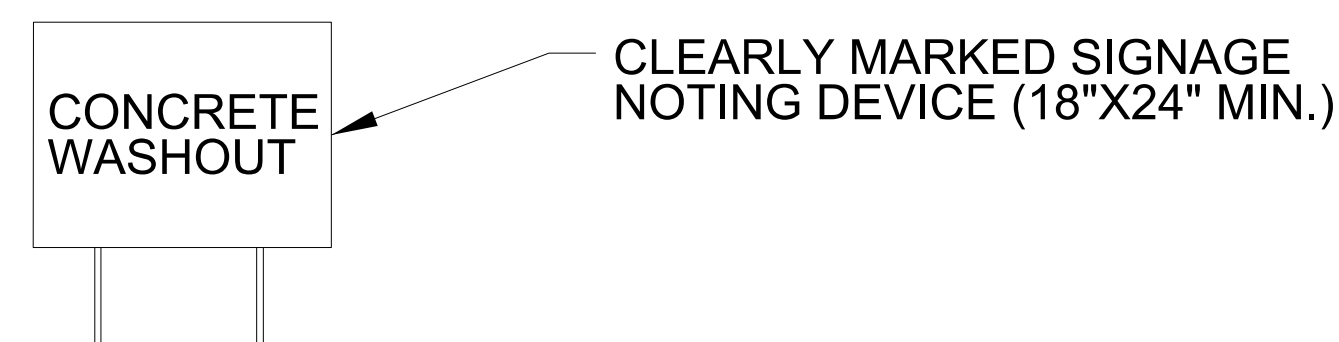
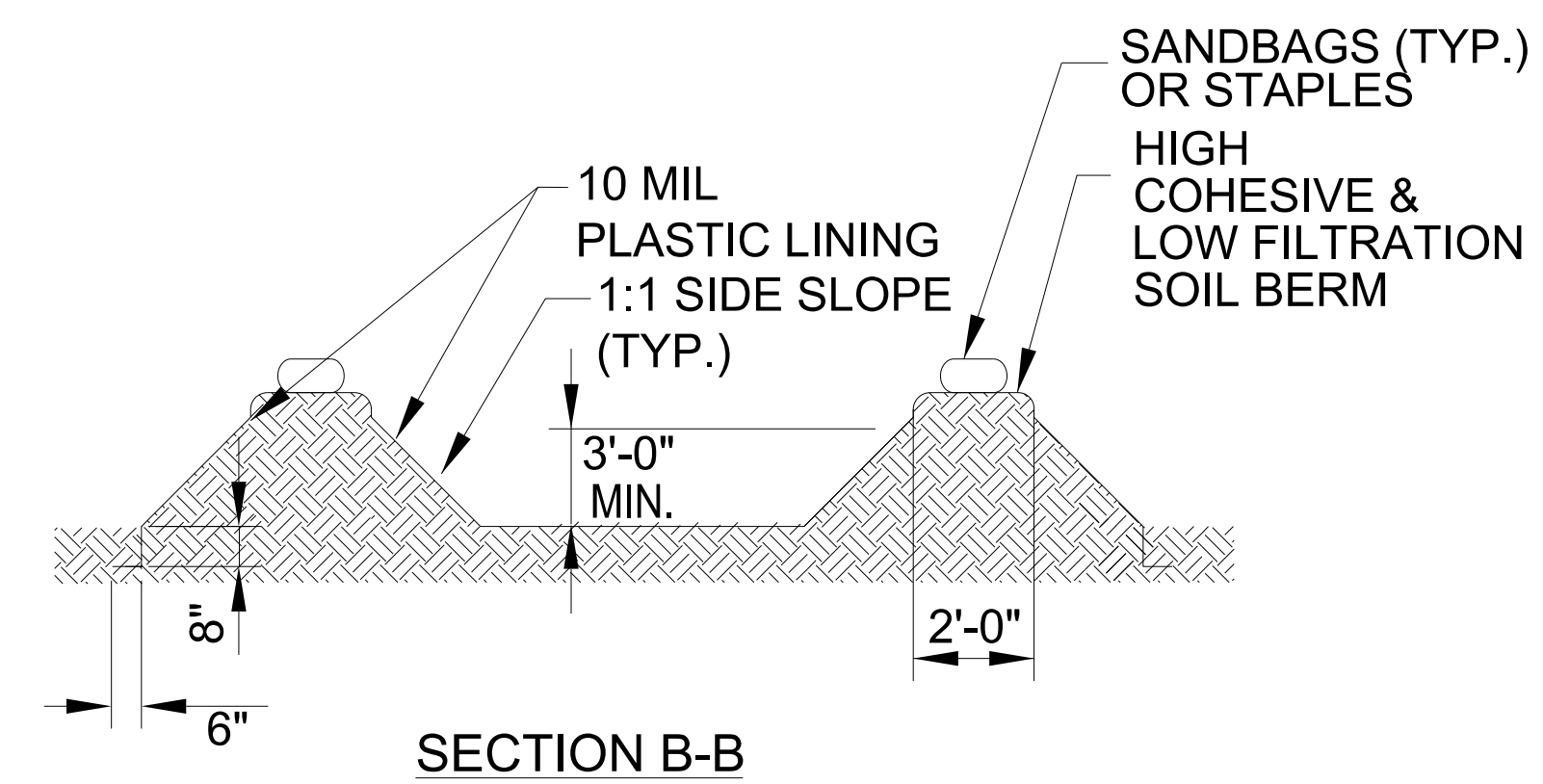
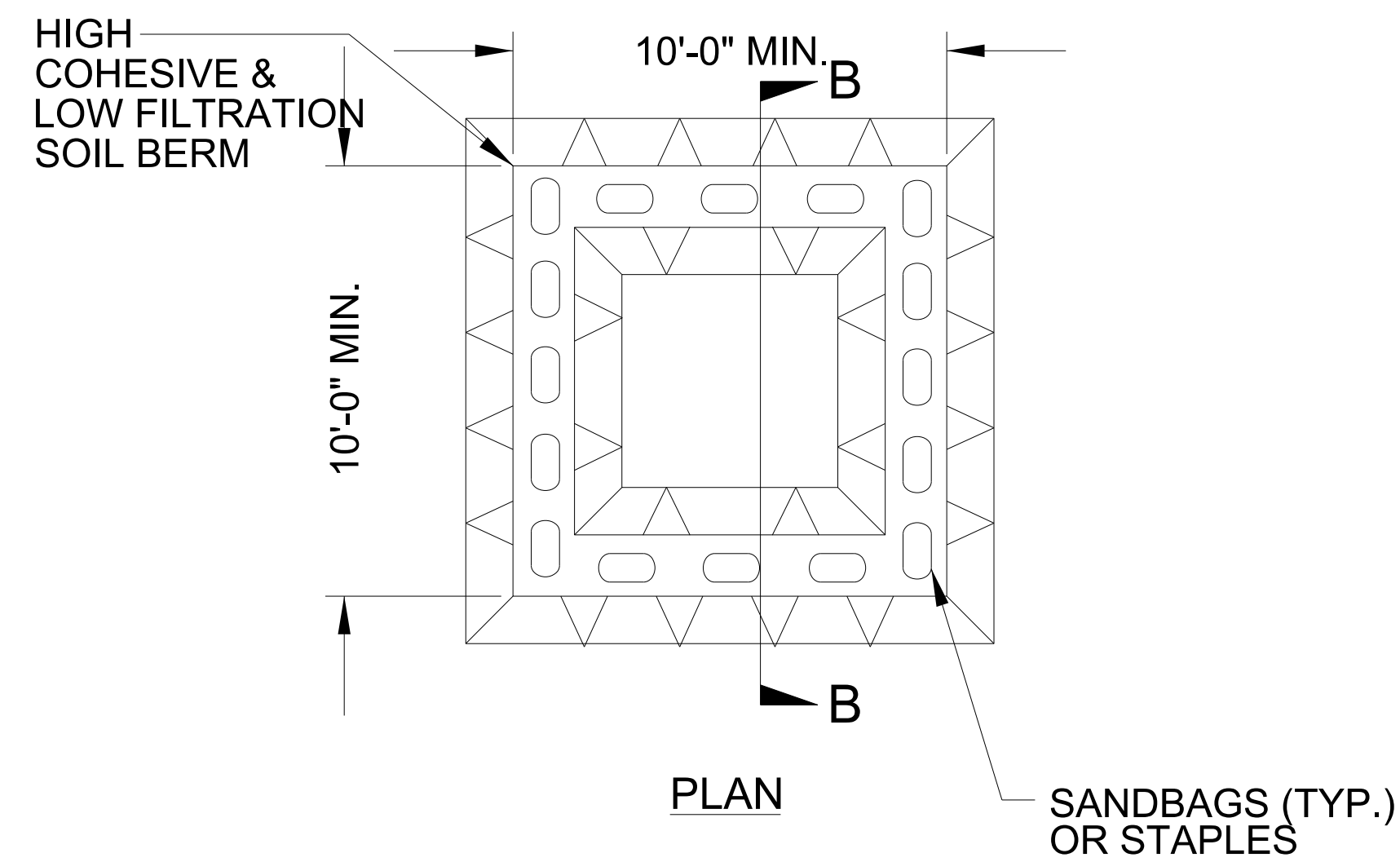
I:\7\2024
 Erosion Control\B5766-EC-2.dgn
 User: KForbes

ONSITE CONCRETE WASHOUT STRUCTURE WITH LINER



BELOW GRADE WASHOUT STRUCTURE
NOT TO SCALE

- NOTES:**
1. ACTUAL LOCATION DETERMINED IN FIELD
 2. THE CONCRETE WASHOUT STRUCTURES SHALL BE MAINTAINED WHEN THE LIQUID AND/OR SOLID REACHES 75% OF THE STRUCTURES CAPACITY TO PROVIDE ADEQUATE HOLDING CAPACITY WITH A MINIMUM 12 INCHES OF FREEBOARD.
 3. CONCRETE WASHOUT STRUCTURE NEEDS TO BE CLEARLY MARKED WITH SIGNAGE NOTING DEVICE.



ABOVE GRADE WASHOUT STRUCTURE
NOT TO SCALE

- NOTES:**
1. ACTUAL LOCATION DETERMINED IN FIELD
 2. THE CONCRETE WASHOUT STRUCTURES SHALL BE MAINTAINED WHEN THE LIQUID AND/OR SOLID REACHES 75% OF THE STRUCTURES CAPACITY TO PROVIDE ADEQUATE HOLDING CAPACITY WITH A MINIMUM 12 INCHES OF FREEBOARD.
 3. CONCRETE WASHOUT STRUCTURE NEEDS TO BE CLEARLY MARKED WITH SIGNAGE NOTING DEVICE.

DIVISION OF HIGHWAYS
STATE OF NORTH CAROLINA

PROJECT REFERENCE NO.	SHEET NO.
B-5766	EC-3A
RW SHEET NO.	
DRMP, INC. 5808 FARINGTON PLACE RALEIGH, NC 27609 (919) 972-5115	NC LICENSE NO. F-1524 www.drmp.com

SOIL STABILIZATION SUMMARY SHEET

STRAW FOR EROSION CONTROL

CONST SHEET NO.	LINE	FROM STATION	TO STATION	SIDE	ESTIMATE (SY)
					SUBTOTAL
MISCELLANEOUS STRAW TO BE INSTALLED AS DIRECTED BY THE ENGINEER					
					TOTAL
					SAY

MATTING ON SLOPES


CONST SHEET NO.	LINE	FROM STATION	TO STATION	SIDE	ESTIMATE (SY)
4	-L-	10+25	12+90	RT	1650
5	-L-	17+00	20+00	RT	1000
					SUBTOTAL
MISCELLANEOUS MATTING TO BE INSTALLED AS DIRECTED BY THE ENGINEER					
					TOTAL
					SAY

COIR FIBER MATTING

CONST SHEET NO.	LINE	FROM STATION	TO STATION	SIDE	ESTIMATE (SY)
4	-L-	13+20	13+60	BOTH	165
5	-L-	16+40	16+70	BOTH	120
					SUBTOTAL
MISCELLANEOUS COIR FIBER MATTING TO BE INSTALLED AS DIRECTED BY THE ENGINEER					
					TOTAL
					SAY

I:\7\2024\11\B5766-EC-3A.dgn
User: kforbes

DIVISION OF HIGHWAYS
STATE OF NORTH CAROLINA

PROJECT REFERENCE NO.	SHEET NO.
B-5766	EC-3B
RW SHEET NO.	
	
DRMP, INC. 5808 FARINGTON PLACE RALEIGH, NC 27609 (919) 972-5115	NC LICENSE NO. F-1524 www.drmp.com

SOIL STABILIZATION TIMEFRAMES

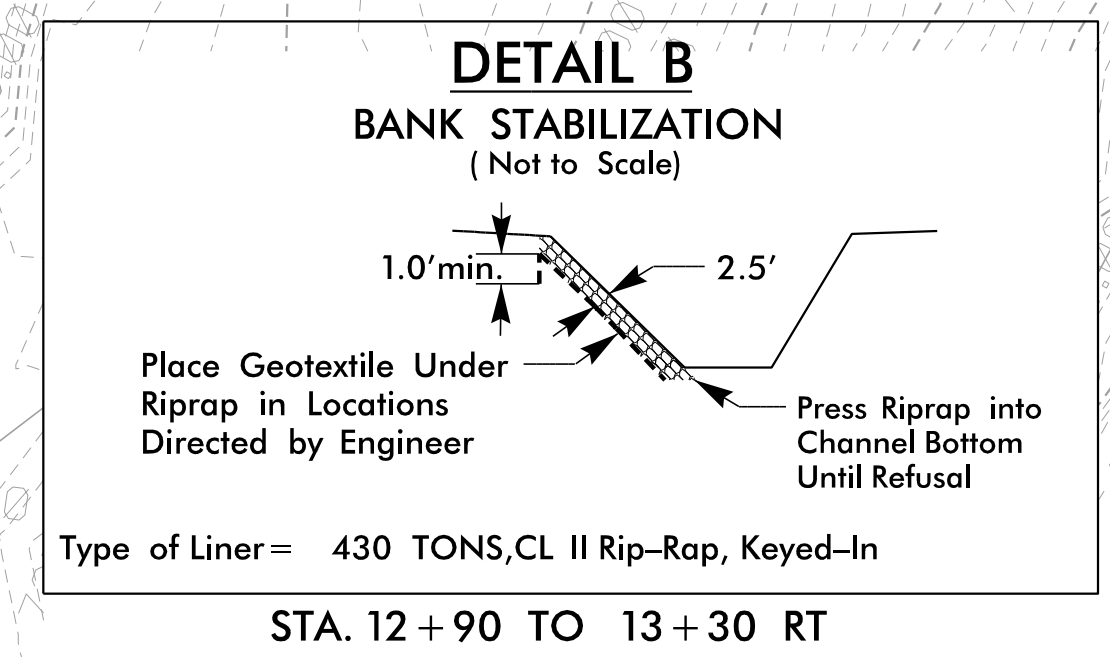
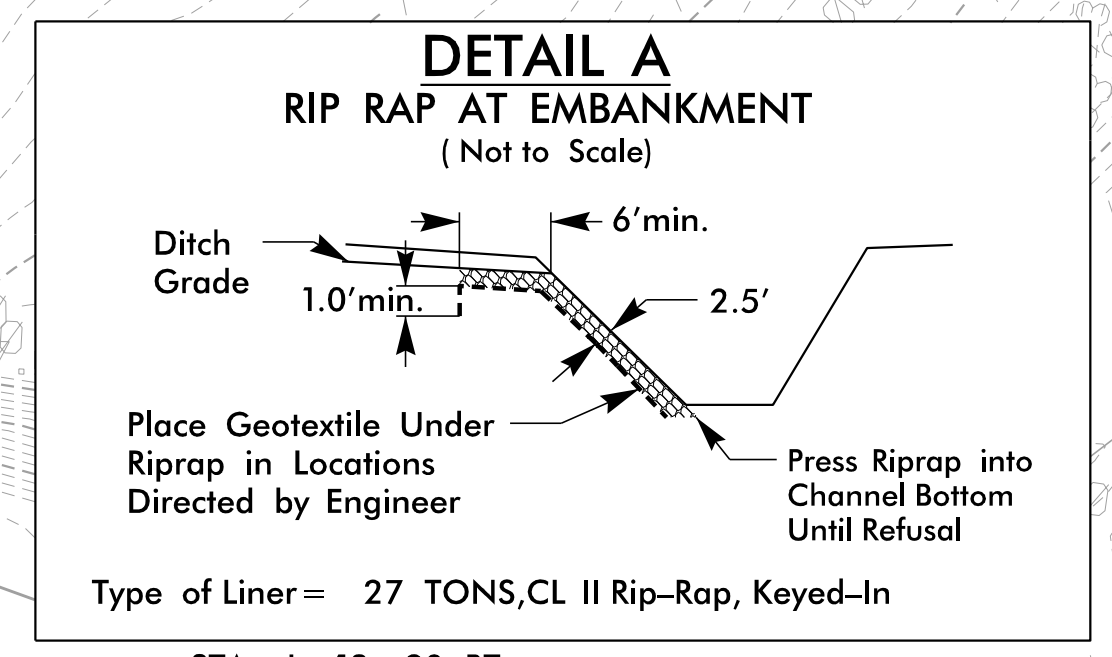
<i>SITE DESCRIPTION</i>	<i>STABILIZATION TIME</i>	<i>TIMEFRAME EXCEPTIONS</i>
PERIMETER DIKES, SWALES, DITCHES AND SLOPES	7 DAYS	NONE
HIGH QUALITY WATER (HQW) ZONES	7 DAYS	NONE
SLOPES STEEPER THAN 3:1	7 DAYS	IF SLOPES ARE 10' OR LESS IN LENGTH AND ARE NOT STEEPER THAN 2:1, 14 DAYS ARE ALLOWED.
SLOPES 3:1 TO 4:1	14 DAYS	7 DAYS FOR SLOPES GREATER THAN 50' IN LENGTH WITH SLOPES STEEPER THAN 4:1. 7 DAYS FOR PERIMETER DIKES, SWALES, DITCHES PERIMETER SLOPES, AND HQW ZONES
ALL OTHER AREAS WITH SLOPES FLATTER THAN 4:1	14 DAYS	7 DAYS FOR PERIMETER DIKES, SWALES, DITCHES PERIMETER SLOPES, AND HQW ZONES

CLEARING AND GRUBBING
 EROSION CONTROL FOR
 CONSTRUCTION SHEET 4

NOTE:
 PLACE TEMPORARY ROCK SEDIMENT DAMS TYPE - B
 AND TEMPORARY ROCK SILT CHECKS TYPE - A AT
 DRAINAGE OUTLETS.

 ENVIRONMENTALLY
 SENSITIVE AREA
 SEE PROJECT
 SPECIAL PROVISIONS

UTILIZE BEST MANAGEMENT PRACTICES FOR CONSTRUCTION AND MAINTENANCE
 ACTIVITIES RELATED TO BRIDGE CONSTRUCTION AND BRIDGE DEMOLITION.
 USE FLOATING TURBIDITY CURTAIN AND/OR IMPERVIOUS DIKE AS NEEDED
 IN LOCATIONS DIRECTED BY THE ENGINEER.



HYDRAULIC DATA

DESIGN DISCHARGE	= 18100 C.F.S.
FREQUENCY OF DESIGN FLOOD	= 25 YRS.
DESIGN HIGH WATER ELEVATION	= 690.1'
DRAINAGE AREA	= 269 SQ. MI.
BASE DISCHARGE (Q100)	= 24544 C.F.S.
BASE HIGH WATER ELEVATION	= 693.6'

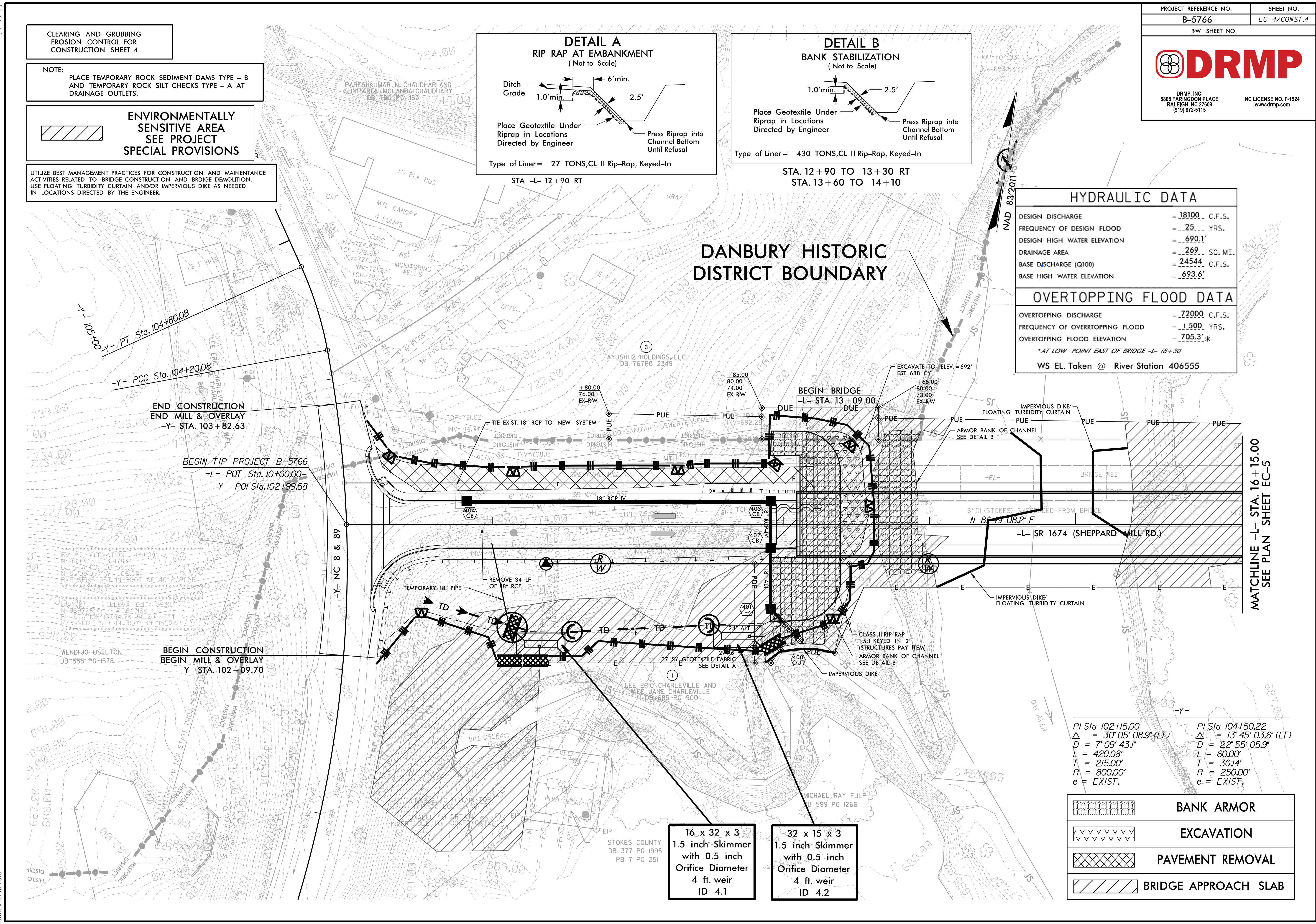
OVERTOPPING FLOOD DATA

OVERTOPPING DISCHARGE	= 72000 C.F.S.
FREQUENCY OF OVERTOPPING FLOOD	= 500 YRS.
OVERTOPPING FLOOD ELEVATION	= 705.3'

* AT LOW POINT EAST OF BRIDGE -L- 18+30

WS EL. Taken @ River Station 406555

DANBURY HISTORIC DISTRICT BOUNDARY



END CONSTRUCTION
 END MILL & OVERLAY
 -Y- STA. 103+82.63

BEGIN TIP PROJECT B-5766
 -L- POT Sta. 10+00.00
 -Y- POI Sta. 102+99.58

BEGIN CONSTRUCTION
 BEGIN MILL & OVERLAY
 -Y- STA. 102+09.70

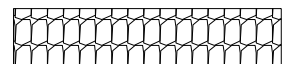
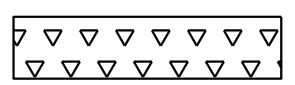
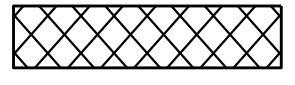
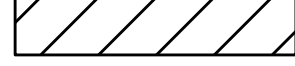
MATCHLINE -L- STA. 16+15.00
 SEE PLAN SHEET EC-5

16 x 32 x 3
 1.5 inch Skimmer
 with 0.5 inch
 Orifice Diameter
 4 ft. weir
 ID 4.1

32 x 15 x 3
 1.5 inch Skimmer
 with 0.5 inch
 Orifice Diameter
 4 ft. weir
 ID 4.2

PI Sta 102+15.00
 $\Delta = 30' 05" 08.9" (LT)$
 $D = 7' 09" 43.1"$
 $L = 420.08'$
 $T = 215.00'$
 $R = 800.00'$
 $e = EXIST.$

PI Sta 104+50.22
 $\Delta = 13' 45" 03.6" (LT)$
 $D = 22' 55" 05.9"$
 $L = 60.00'$
 $T = 30.14'$
 $R = 250.00'$
 $e = EXIST.$

	BANK ARMOR
	EXCAVATION
	PAVEMENT REMOVAL
	BRIDGE APPROACH SLAB

8.17.2024
 I:\B5766-EC-psh04-CG.dgn
 User: kforbes

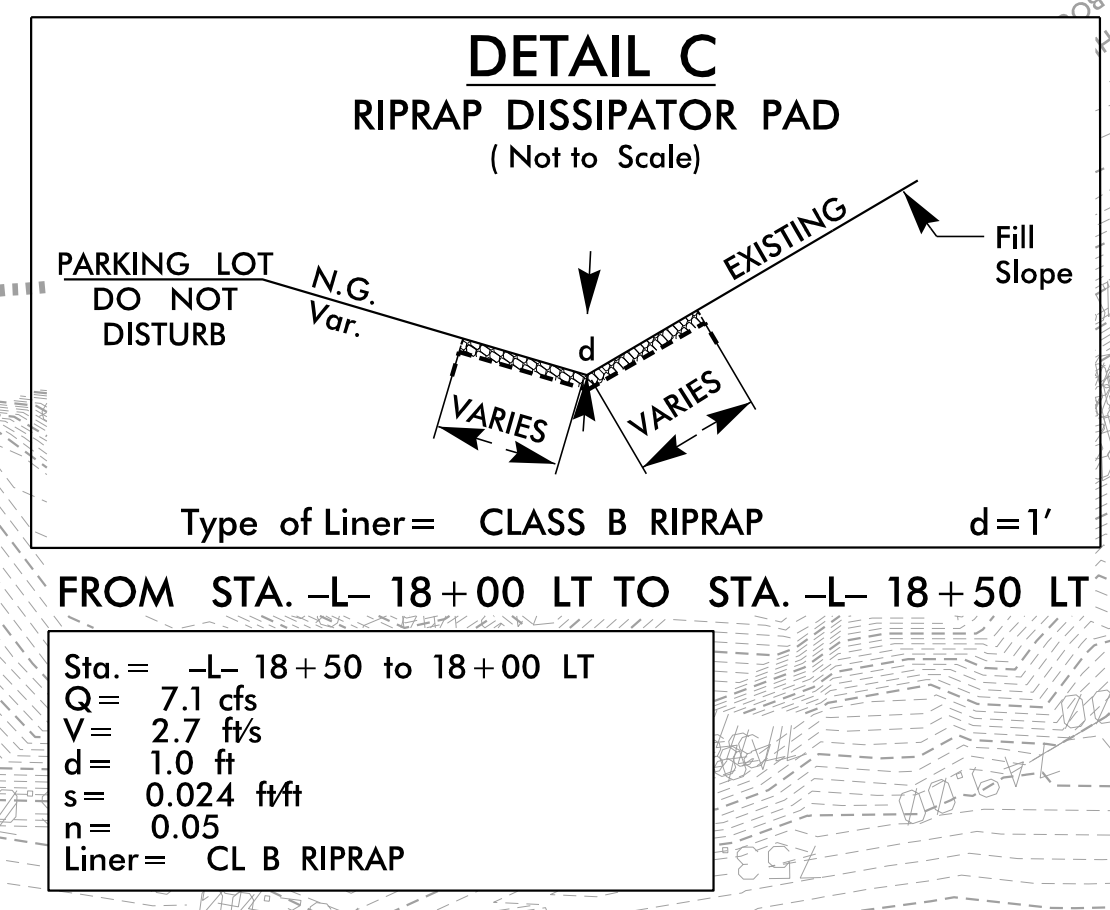
CLEARING AND GRUBBING
EROSION CONTROL FOR
CONSTRUCTION SHEET 5

NOTE:
PLACE TEMPORARY ROCK SEDIMENT DAMS TYPE - B
AND TEMPORARY ROCK SILT CHECKS TYPE - A AT
DRAINAGE OUTLETS.

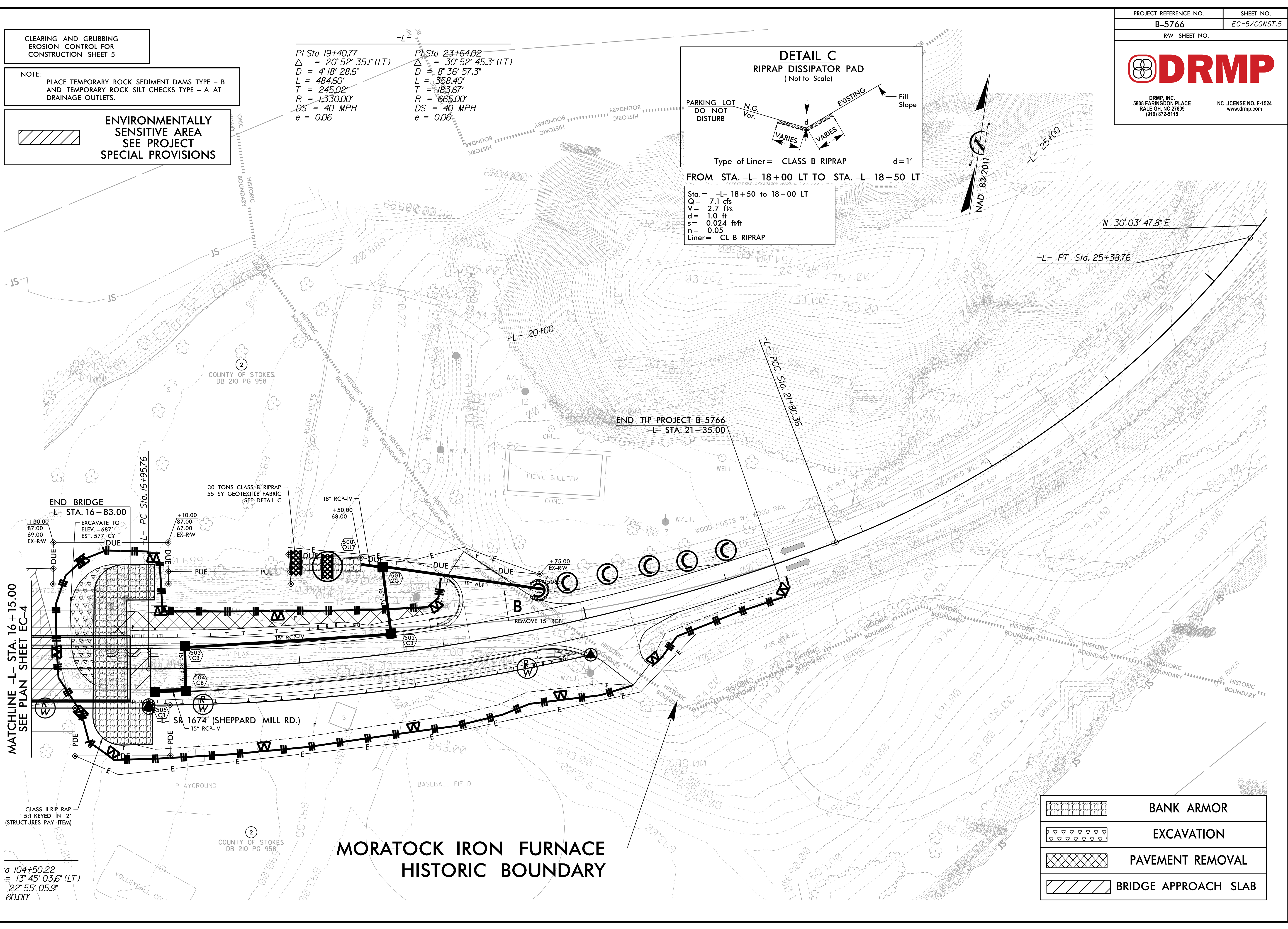
**ENVIRONMENTALLY
SENSITIVE AREA
SEE PROJECT
SPECIAL PROVISIONS**

PI Sta 19+40.77
Δ = 20° 52' 35.1" (LT)
D = 4' 18" 28.6"
L = 484.60'
T = 245.02'
R = 1,330.00'
DS = 40 MPH
e = 0.06

PI Sta 23+64.02
Δ = 30° 52' 45.3" (LT)
D = 8' 36" 57.3"
L = 358.40'
T = 183.67'
R = 665.00'
DS = 40 MPH
e = 0.06



8/17/2024 11:15:57 AM EC-psah05-CG.dgn User: kforbes



MATCHLINE -L- STA. 16+15.00
SEE PLAN SHEET EC-4

CLASS II RIP RAP
1.5:1 KEYED IN 2"
(STRUCTURES PAY ITEM)

104+50.22
= 13° 45' 03.6" (LT)
22° 55' 05.9"
60.00'

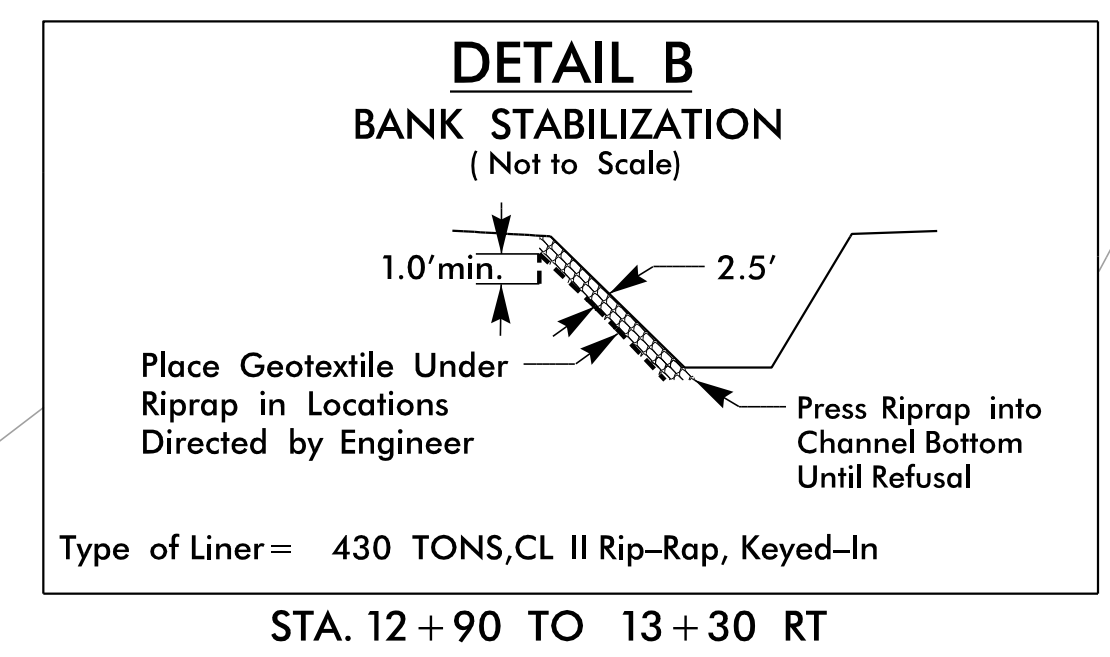
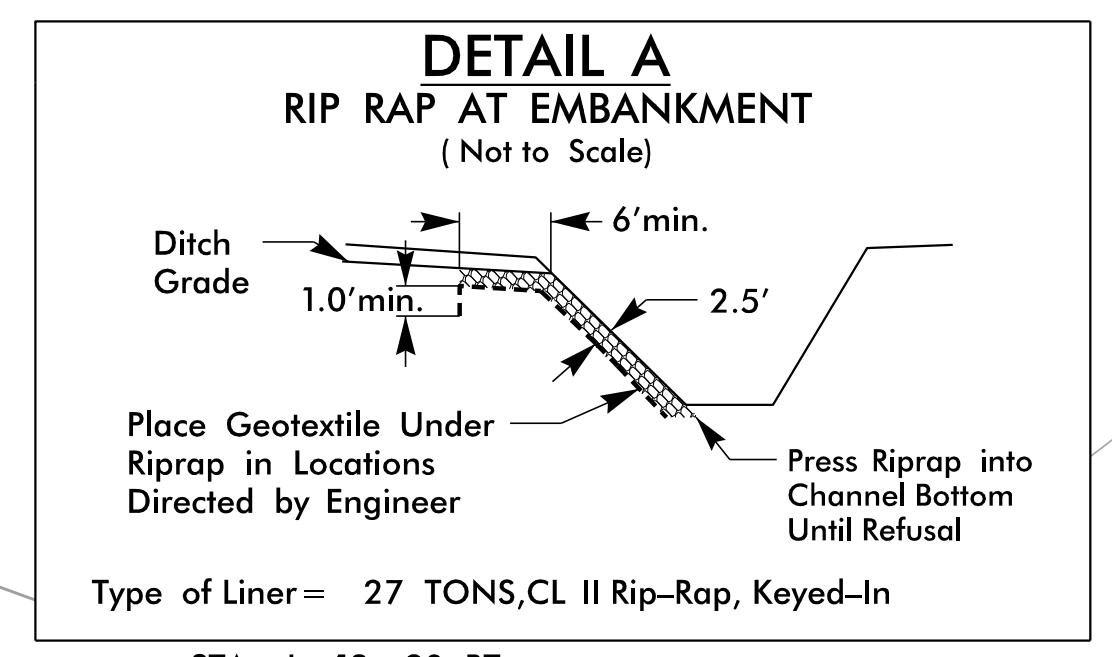
**MORATOCK IRON FURNACE
HISTORIC BOUNDARY**

	BANK ARMOR
	EXCAVATION
	PAVEMENT REMOVAL
	BRIDGE APPROACH SLAB

Place Matting for Erosion Control on Slope as Work Allows.
Sta. 10+25 RT to Sta. 12+90 RT

Place Coir Fiber Matting for Erosion Control Beneath Bridge in Excavated Areas

UTILIZE BEST MANAGEMENT PRACTICES FOR CONSTRUCTION AND MAINTENANCE ACTIVITIES RELATED TO BRIDGE CONSTRUCTION AND BRIDGE DEMOLITION. USE FLOATING TURBIDITY CURTAIN AND/OR IMPERVIOUS DIKE AS NEEDED IN LOCATIONS DIRECTED BY THE ENGINEER.



HYDRAULIC DATA

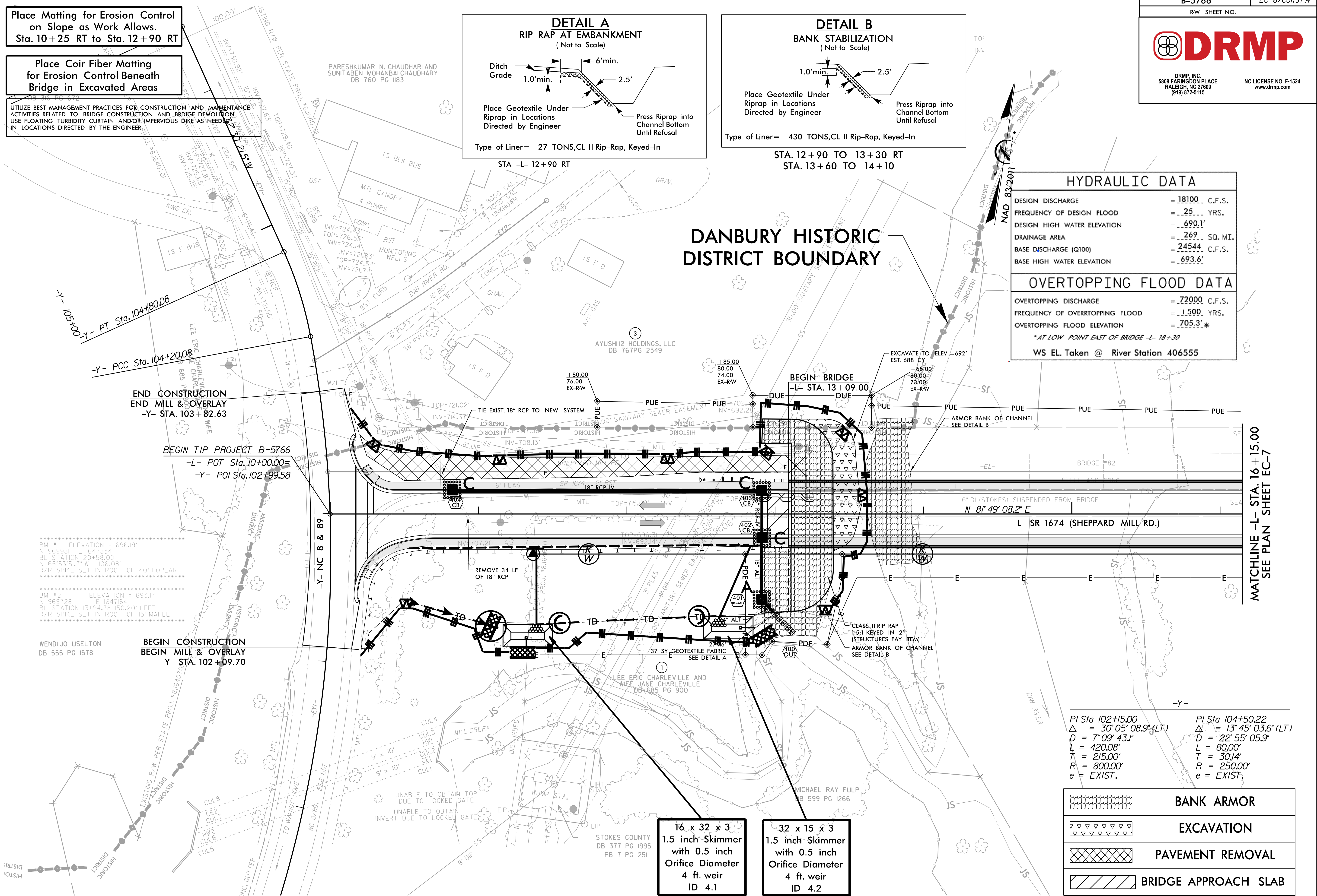
DESIGN DISCHARGE	= 18100 C.F.S.
FREQUENCY OF DESIGN FLOOD	= 25 YRS.
DESIGN HIGH WATER ELEVATION	= 690.1'
DRAINAGE AREA	= 269 SQ. MI.
BASE DISCHARGE (Q100)	= 24544 C.F.S.
BASE HIGH WATER ELEVATION	= 693.6'

OVERTOPPING FLOOD DATA

OVERTOPPING DISCHARGE	= 72000 C.F.S.
FREQUENCY OF OVERTOPPING FLOOD	= 500 YRS.
OVERTOPPING FLOOD ELEVATION	= 705.3'

* AT LOW POINT EAST OF BRIDGE -L- 18+30
WS EL. Taken @ River Station 406555

DANBURY HISTORIC DISTRICT BOUNDARY



BM #1 ELEVATION = 696.19'
N 96°39'1" E 1647.834'
BL STATION 20+58.00
N 65°53'51.7" W 106.08'
R/R SPIKE SET IN ROOT OF 40" POPLAR

BM #2 ELEVATION = 693.11'
N 96°37'28" E 1647.164'
BL STATION 13+94.78 150.20' LEFT
R/R SPIKE SET IN ROOT OF 15" MAPLE

WENDIJO USELTON
DB 555 PG 1578

BEGIN CONSTRUCTION
BEGIN MILL & OVERLAY
-Y- STA. 102+09.70

END CONSTRUCTION
END MILL & OVERLAY
-Y- STA. 103+82.63

BEGIN TIP PROJECT B-5766
-L- POT Sta. 10+00.00
-Y- POI Sta. 102+99.58

16 x 32 x 3
1.5 inch Skimmer
with 0.5 inch
Orifice Diameter
4 ft. weir
ID 4.1

32 x 15 x 3
1.5 inch Skimmer
with 0.5 inch
Orifice Diameter
4 ft. weir
ID 4.2

-Y-
PI Sta 102+15.00
Δ = 30' 05" 08.9" (LT)
D = 7' 09" 43.1"
L = 420.08'
T = 215.00'
R = 800.00'
e = EXIST.

PI Sta 104+50.22
Δ = 13' 45" 03.6" (LT)
D = 22' 55" 05.9"
L = 60.00'
T = 30.14'
R = 250.00'
e = EXIST.

	BANK ARMOR
	EXCAVATION
	PAVEMENT REMOVAL
	BRIDGE APPROACH SLAB

MATCHLINE -L- STA. 16+15.00
SEE PLAN SHEET EC-7

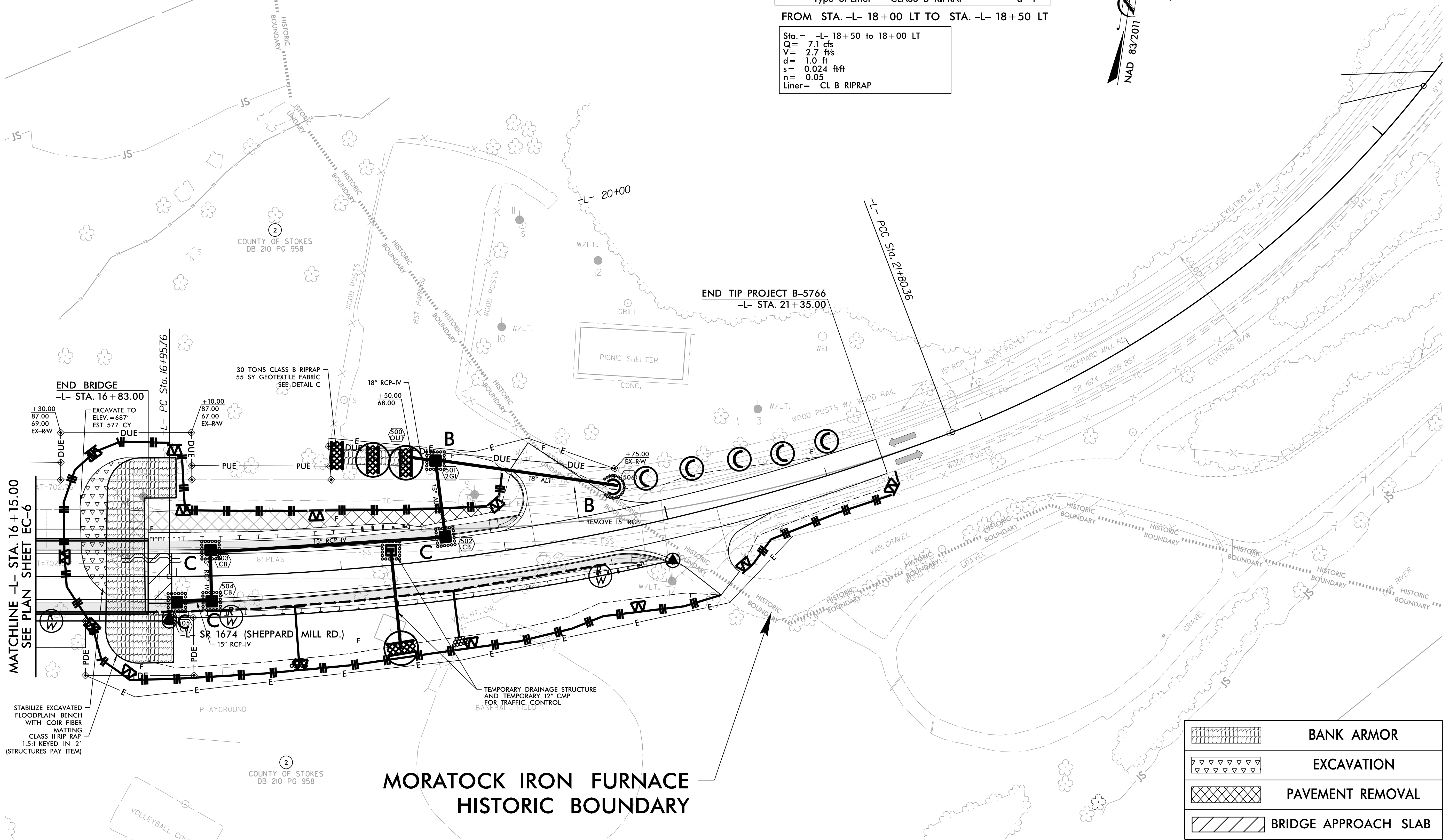
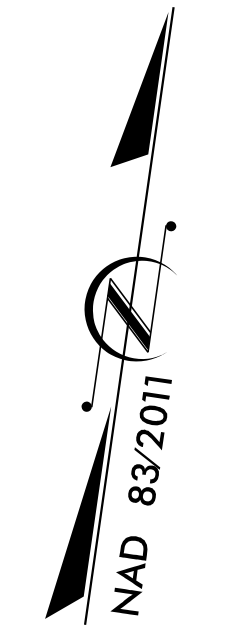
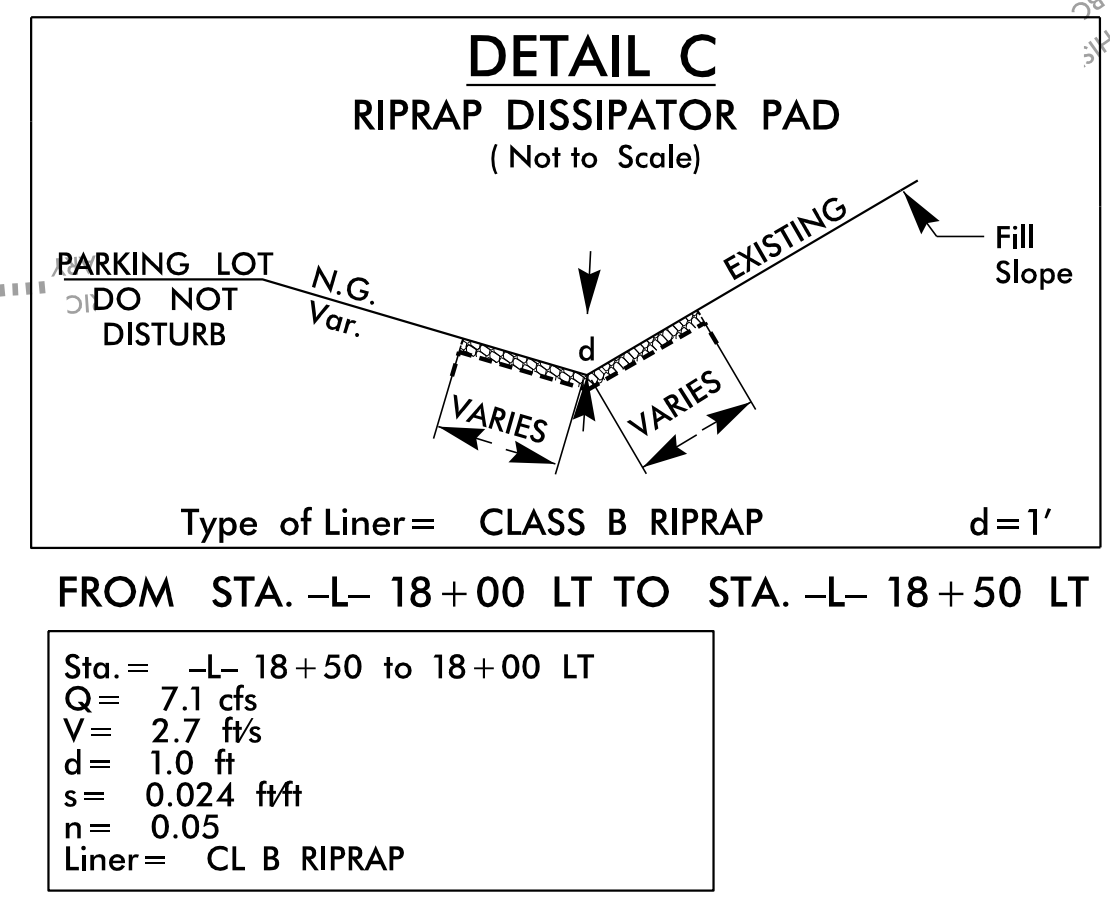
8/17/2024 11:15:57 AM EC-psd04-F.inl.dgn User: kforbes

Place Matting for Erosion Control on Slope as Work Allows. Sta. 17+00 RT to Sta. 20+00 RT

Place Coir Fiber Matting for Erosion Control Beneath Bridge in Excavated Areas

$PI\ Sta\ 19+40.77$
 $\Delta = 20^{\circ} 52' 35.1" (LT)$
 $D = 4' 18.286"$
 $L = 484.60'$
 $T = 245.02'$
 $R = 1,330.00'$
 $DS = 40\ MPH$
 $e = 0.06$

$PI\ Sta\ 23+64.02$
 $\Delta = 30^{\circ} 52' 45.3" (LT)$
 $D = 8' 36.573"$
 $L = 358.40'$
 $T = 183.67'$
 $R = 665.00'$
 $DS = 40\ MPH$
 $e = 0.06$



MATCHLINE -L- STA. 16+15.00
SEE PLAN SHEET EC-6

END BRIDGE
-L- STA. 16+83.00

END TIP PROJECT B-5766
-L- STA. 21+35.00

**MORATOCK IRON FURNACE
HISTORIC BOUNDARY**

	BANK ARMOR
	EXCAVATION
	PAVEMENT REMOVAL
	BRIDGE APPROACH SLAB

STABILIZE EXCAVATED FLOODPLAIN BENCH WITH COIR FIBER MATTING CLASS II RIP RAP 1.5:1 KEYED IN 2' (STRUCTURES PAY ITEM)

TEMPORARY DRAINAGE STRUCTURE AND TEMPORARY 12" CMP FOR TRAFFIC CONTROL

PLAYGROUND

VOLLEYBALL CO.

COUNTY OF STOKES DB 210 PG 958

8/17/99
 11/7/2024
 I:\B5766-EC-psah05-F.inel.dgn
 User: kforbes