
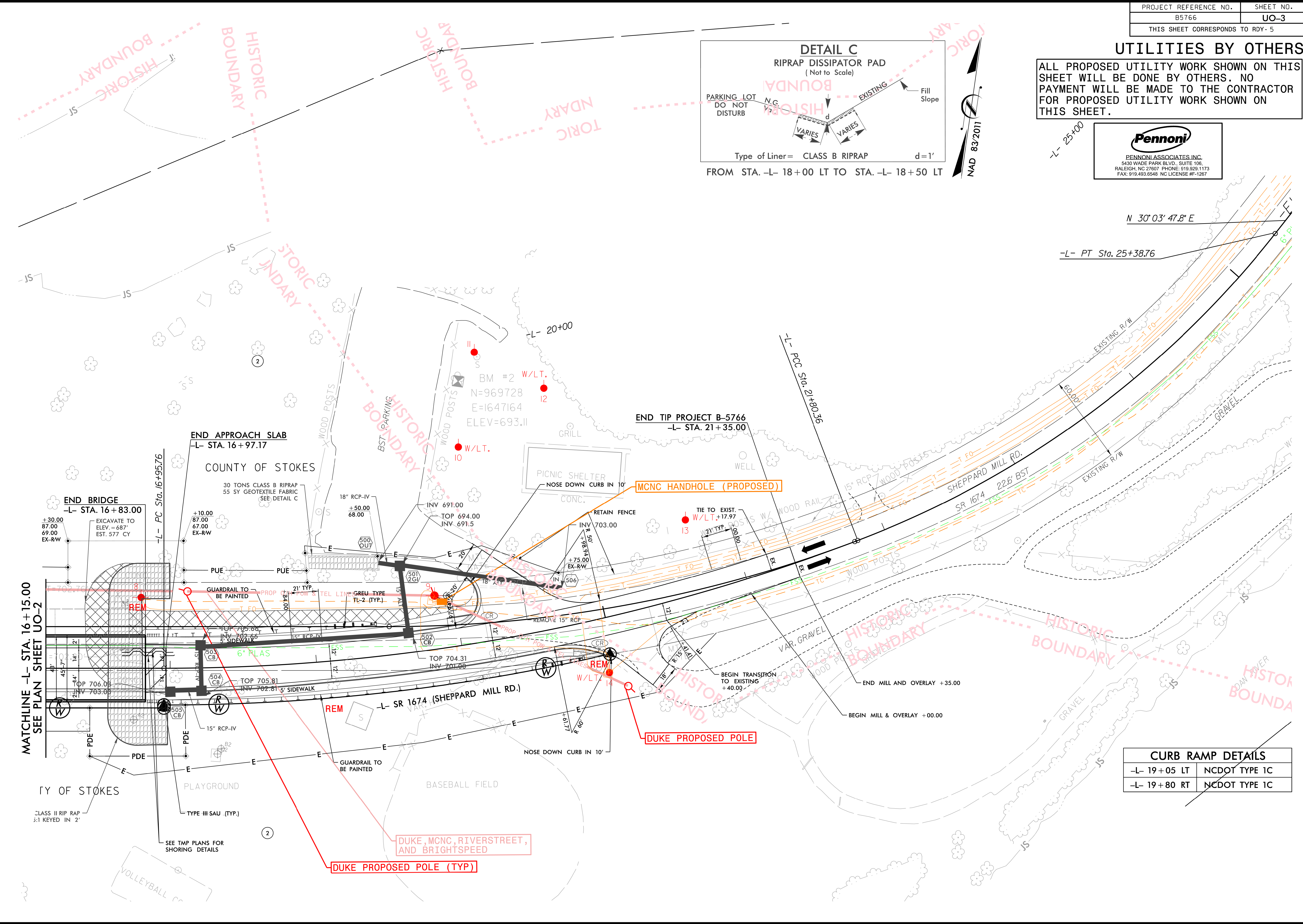
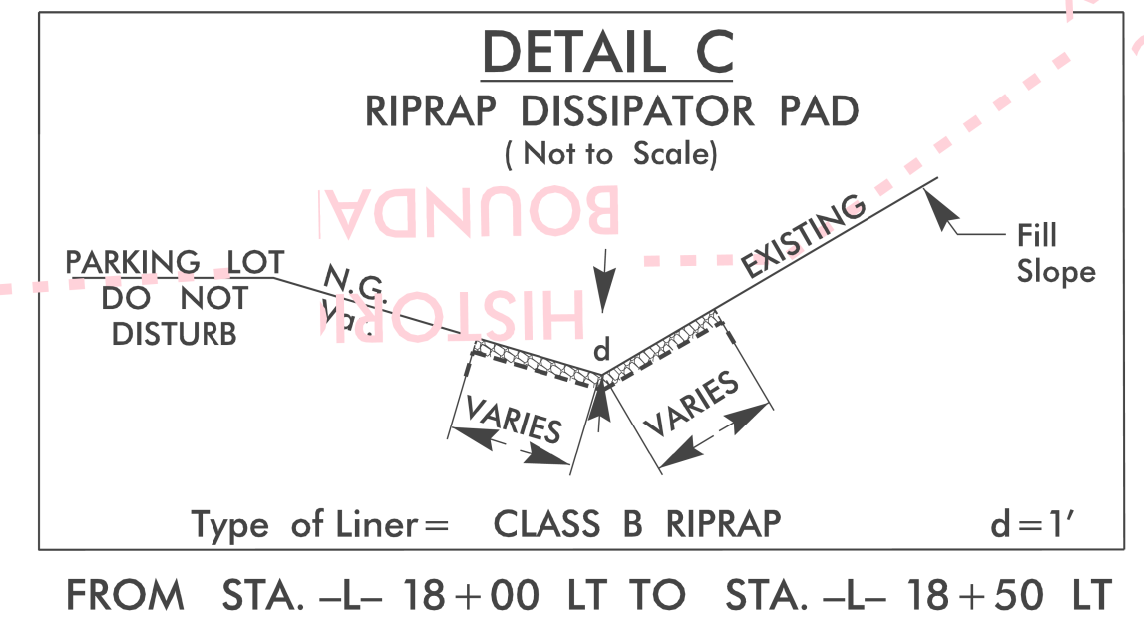


### UTILITIES BY OTHERS

ALL PROPOSED UTILITY WORK SHOWN ON THIS SHEET WILL BE DONE BY OTHERS. NO PAYMENT WILL BE MADE TO THE CONTRACTOR FOR PROPOSED UTILITY WORK SHOWN ON THIS SHEET.



**Pennoni**  
 PENNONI ASSOCIATES, INC.  
 5430 WADE PARK BLVD., SUITE 106,  
 RALEIGH, NC 27607 PHONE: 919.929.1173  
 FAX: 919.493.6548 NC LICENSE #F-1287



CURB RAMP DETAILS	
-L- 19+05 LT	NCDOT TYPE 1C
-L- 19+80 RT	NCDOT TYPE 1C

MATCHLINE -L- STA. 16+15.00  
SEE PLAN SHEET UO-2

COUNTY OF STOKES

CLASS II RIP RAP  
3:1 KEYED IN 2'

SEE TMP PLANS FOR SHORING DETAILS

DUKE, MCNC, RIVERSTREET,  
AND BRIGHTSPEED

DUKE PROPOSED POLE (TYP)

DUKE PROPOSED POLE

MCNC HANDHOLE (PROPOSED)

END TIP PROJECT B-5766  
-L- STA. 21+35.00

END APPROACH SLAB  
-L- STA. 16+97.17

END BRIDGE  
-L- STA. 16+83.00

5/14/2024

10/3/2024 J:\B05\Projects\B5766\ut...Rd\5\_U003.dgn