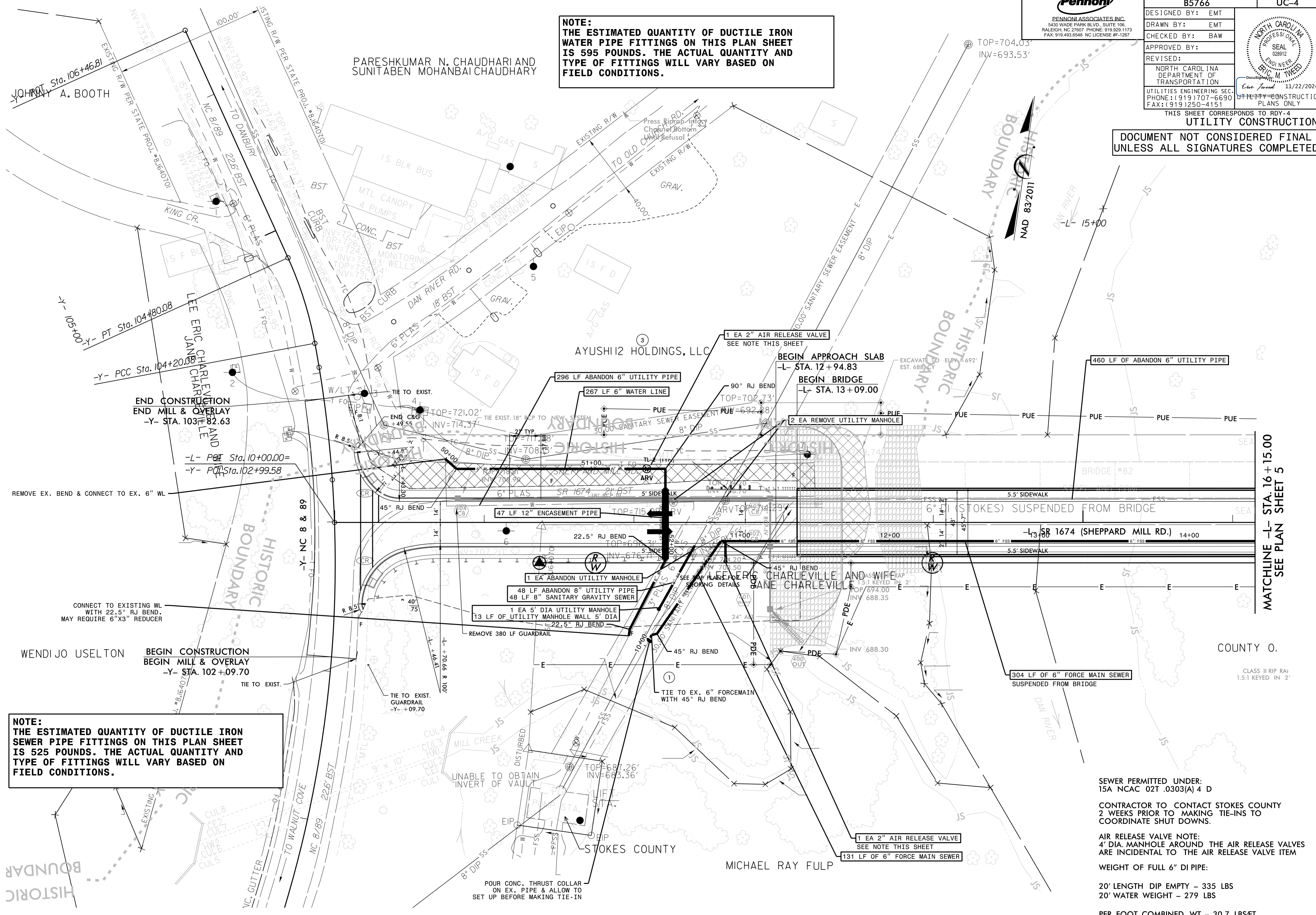


PROJECT REFERENCE NO.	B5766	SHEET NO.	UC-4
DESIGNED BY:	EMT		
DRAWN BY:	EMT		
CHECKED BY:	BAW		
APPROVED BY:			
REVISED:			
NORTH CAROLINA DEPARTMENT OF TRANSPORTATION UTILITIES ENGINEERING SEC. PHONE: (919) 707-6690 FAX: (919) 250-4151		DATE: 11/22/2024	

NOTE:
 THE ESTIMATED QUANTITY OF DUCTILE IRON WATER PIPE FITTINGS ON THIS PLAN SHEET IS 595 POUNDS. THE ACTUAL QUANTITY AND TYPE OF FITTINGS WILL VARY BASED ON FIELD CONDITIONS.

DOCUMENT NOT CONSIDERED FINAL UNLESS ALL SIGNATURES COMPLETED



NOTE:
 THE ESTIMATED QUANTITY OF DUCTILE IRON SEWER PIPE FITTINGS ON THIS PLAN SHEET IS 525 POUNDS. THE ACTUAL QUANTITY AND TYPE OF FITTINGS WILL VARY BASED ON FIELD CONDITIONS.

SEWER PERMITTED UNDER:
 15A NCAC 02T .0303(A) 4 D

CONTRACTOR TO CONTACT STOKES COUNTY 2 WEEKS PRIOR TO MAKING TIE-INS TO COORDINATE SHUT DOWNS.

AIR RELEASE VALVE NOTE:
 4' DIA. MANHOLE AROUND THE AIR RELEASE VALVES ARE INCIDENTAL TO THE AIR RELEASE VALVE ITEM

WEIGHT OF FULL 6" DI PIPE:
 20' LENGTH DIP EMPTY - 335 LBS
 20' WATER WEIGHT - 279 LBS
 PER FOOT COMBINED WT - 30.7 LBS/FT

MATCHLINE -L- STA. 16+15.00 SEE PLAN SHEET 5

11/19/2024 UC-4 UC-4 Pro-J \B5766-ut-Rdy04_UC04_psh.dgn