
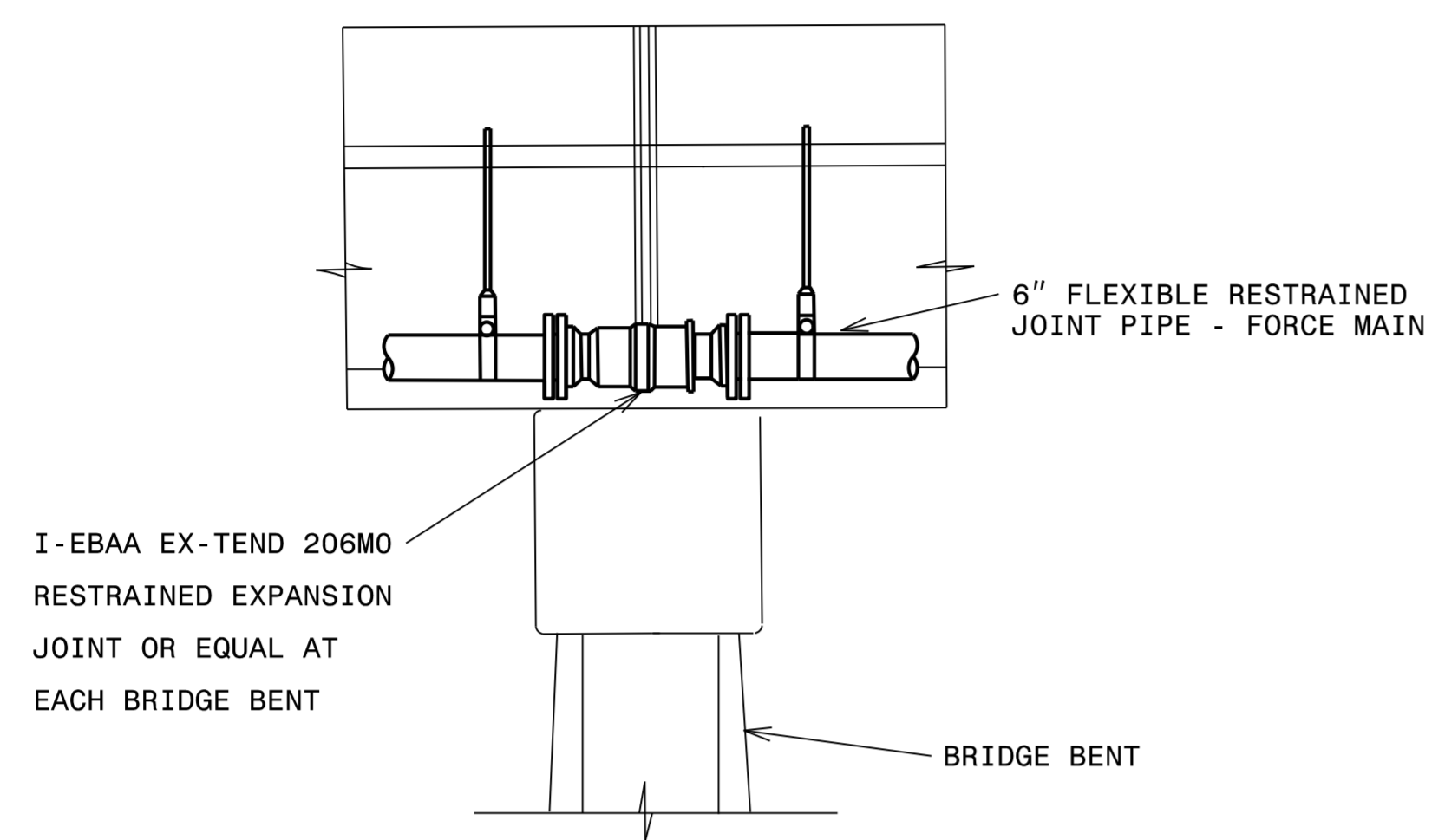


PROJECT TYPICAL DETAILS

UTILITY CONSTRUCTION

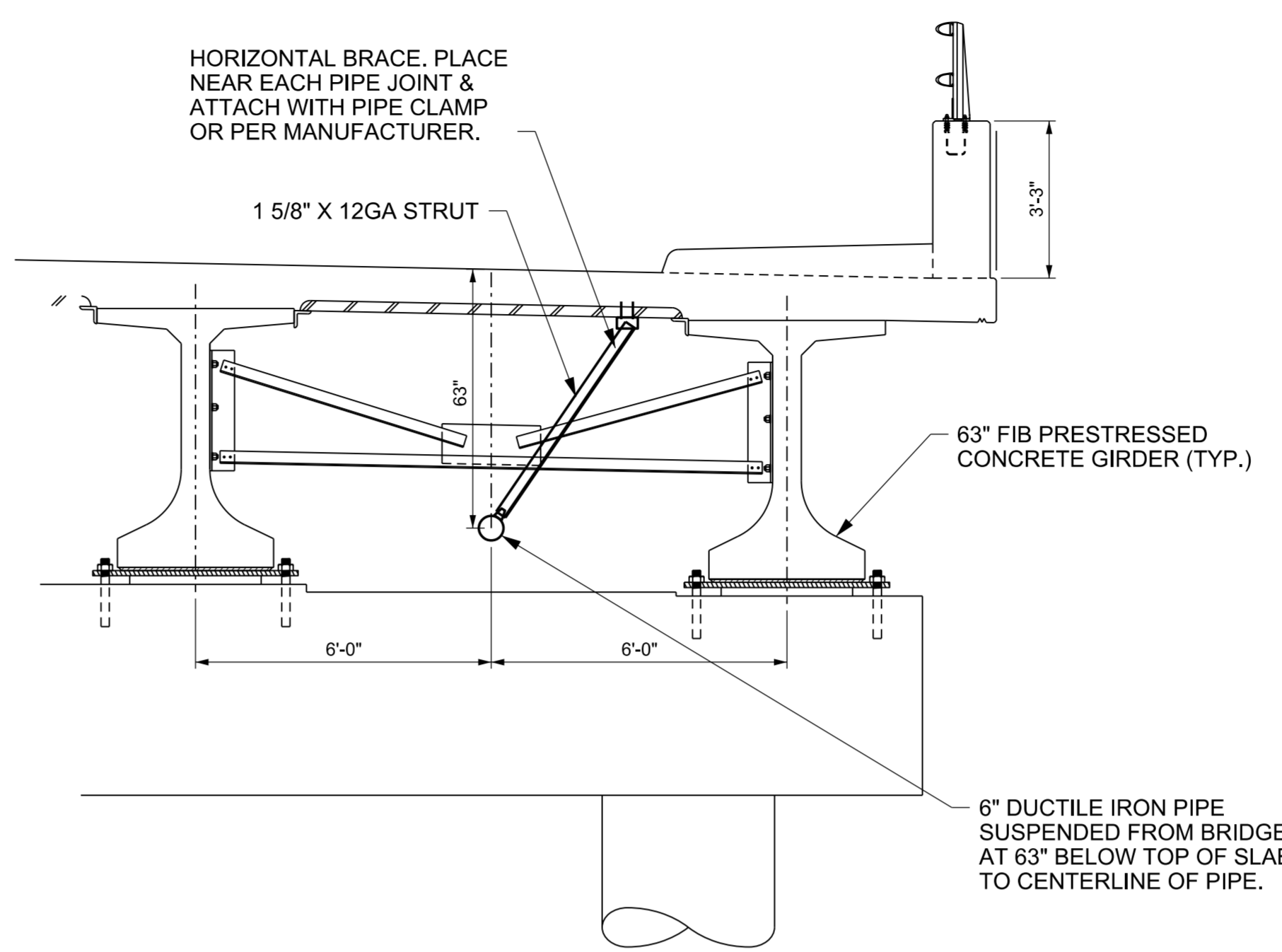
PROJECT REFERENCE NO. B-5766	SHEET NO. UC-3A
DESIGNED BY: EMT	
DRAWN BY: LMS	
CHECKED BY:	
APPROVED BY:	
REVISED BY:	11/22/2024
NORTH CAROLINA DEPARTMENT OF TRANSPORTATION UTILITIES ENGINEERING SEC. PHONE: (919) 707-6690 FAX: (919) 250-4151	

DOCUMENT NOT CONSIDERED FINAL
UNLESS ALL SIGNATURES COMPLETED

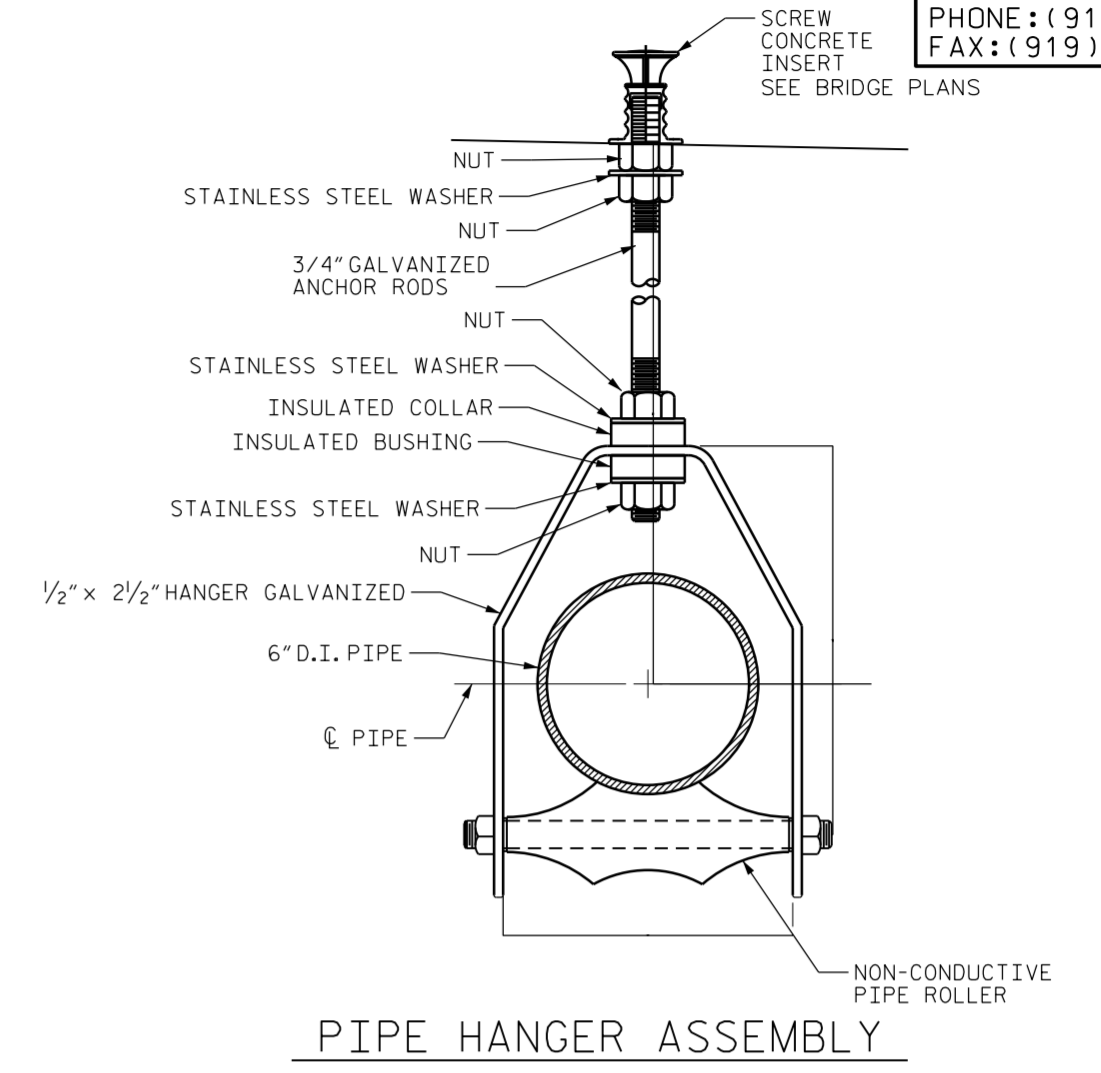


NOTE: HANGERS SHALL NOT BE PLACED CLOSER THAN 6" FROM CONCRETE BRIDGE BENTS

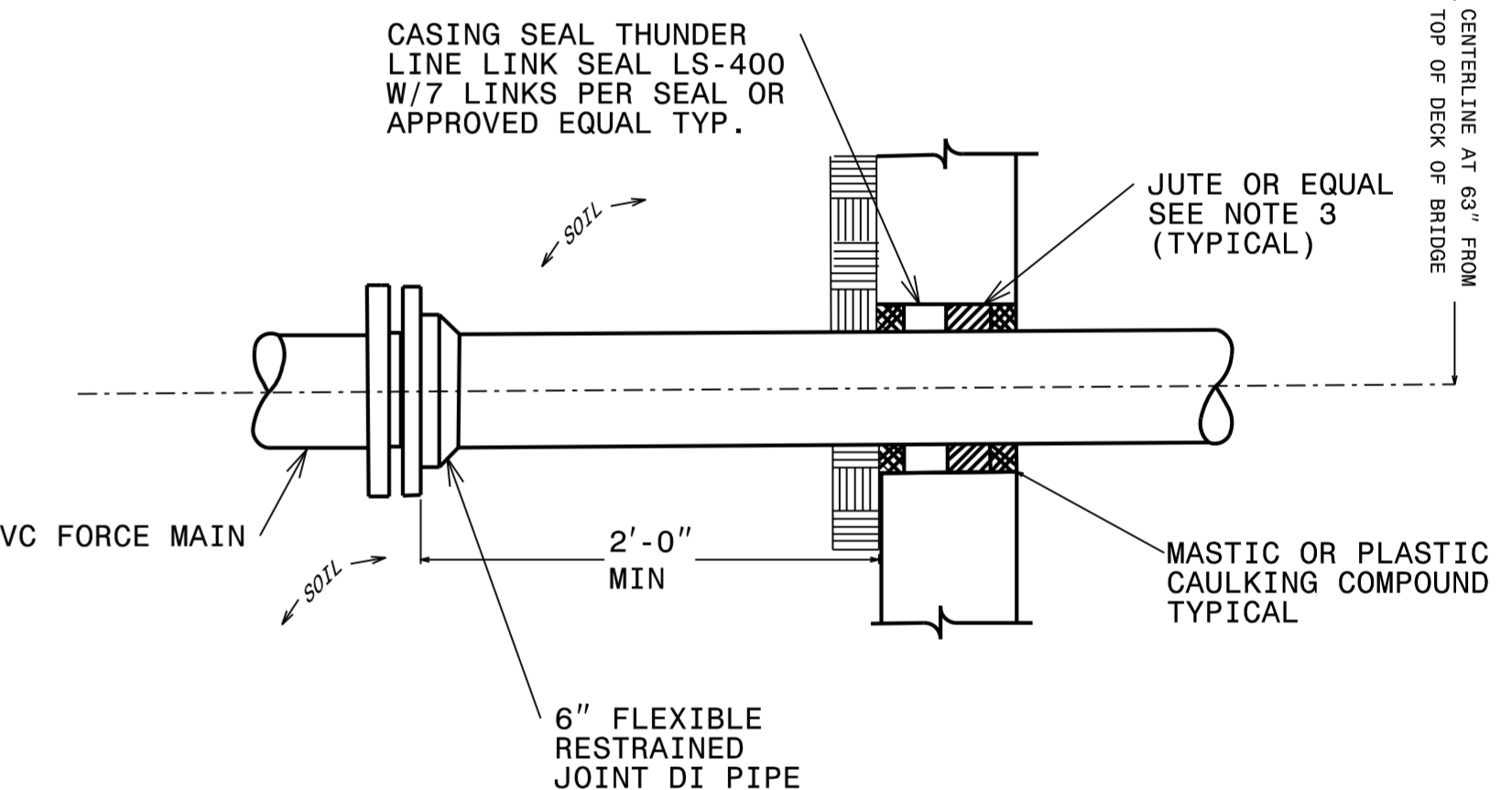
PIPE EXPANSION JOINT DETAIL
NTS



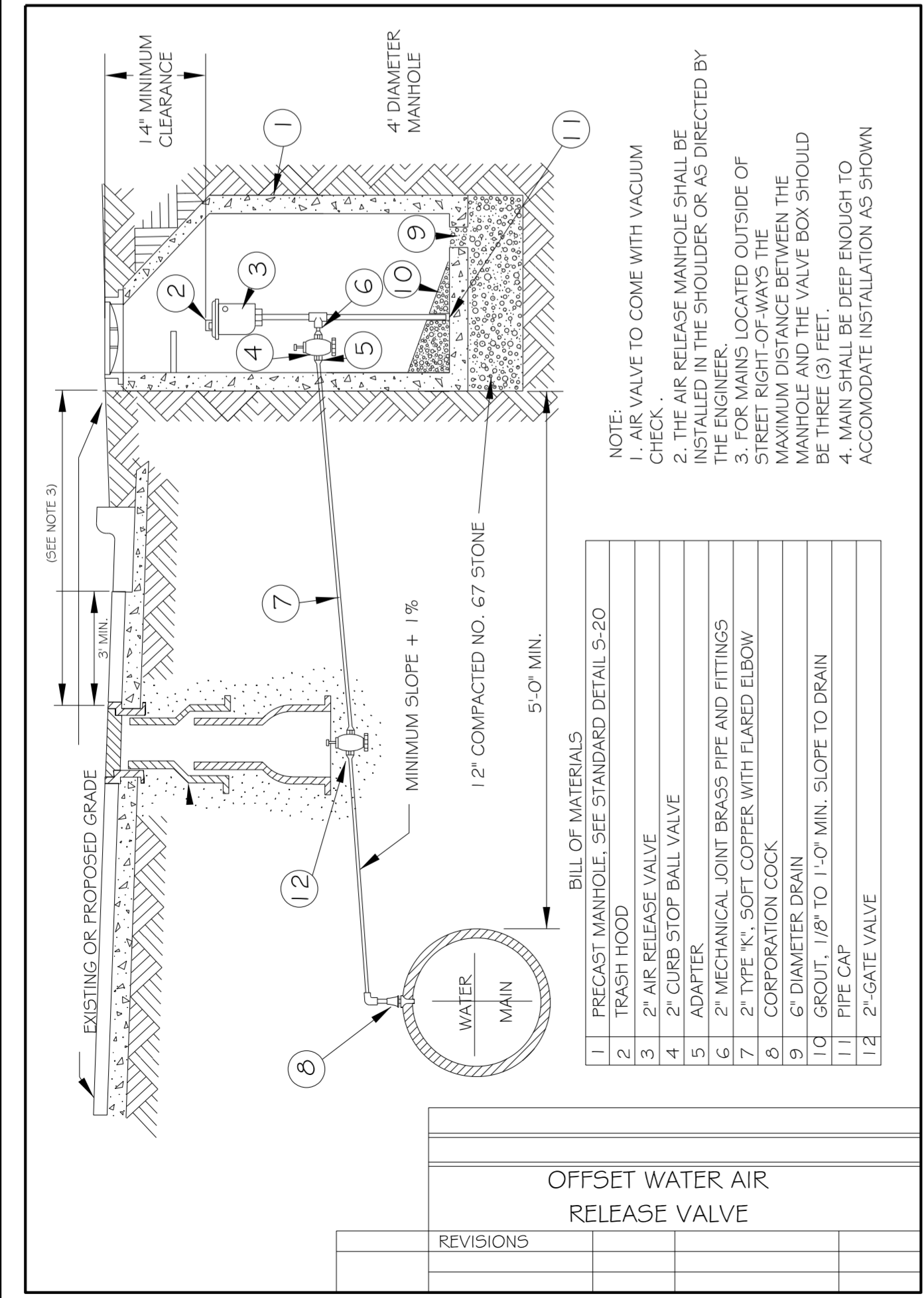
PIPE SUSPENSION CROSS SECTION
NTS



PIPE HANGER ASSEMBLY



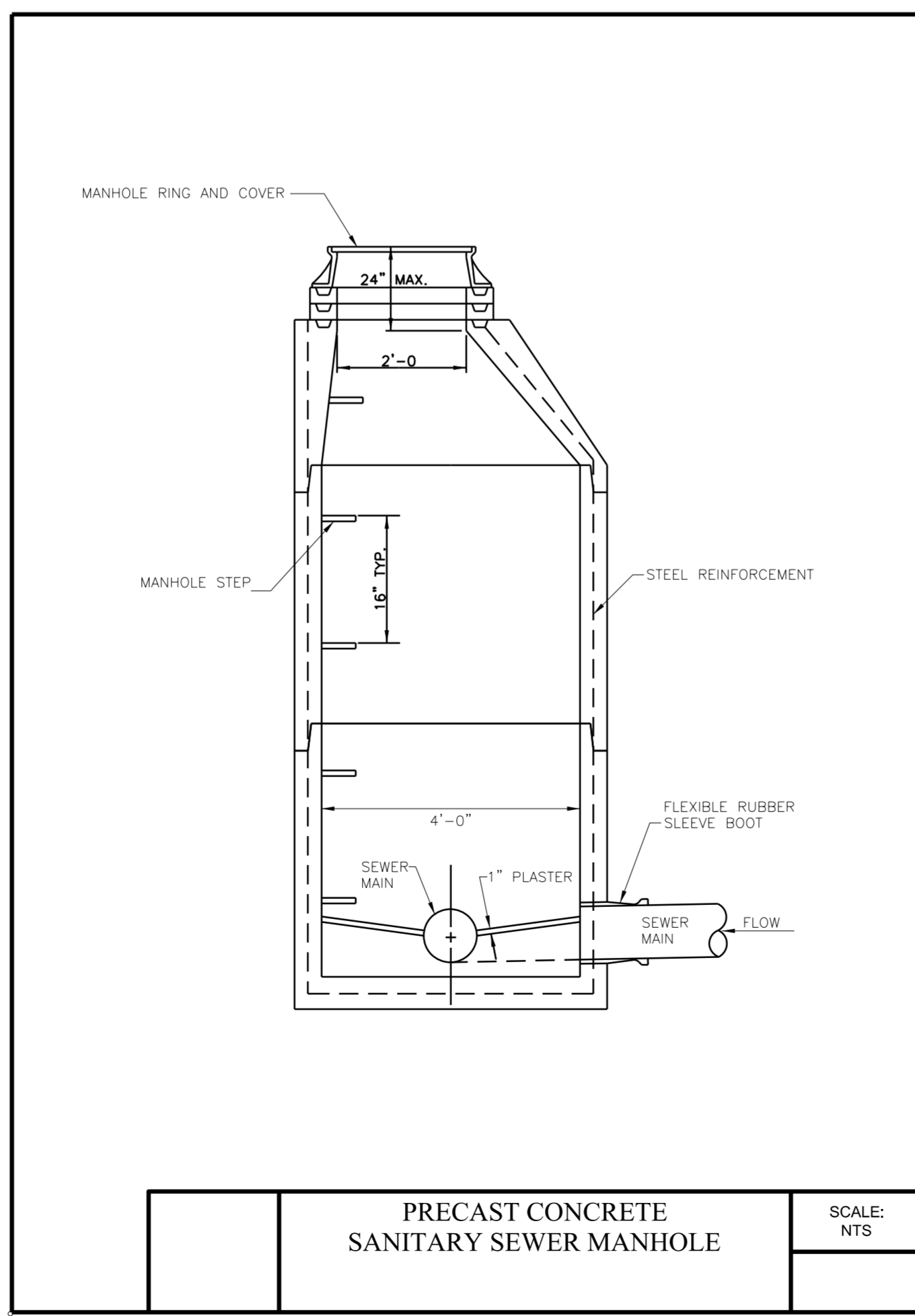
WALL PENETRATION DETAIL
NTS



NOTE: AIR VALVE TO COME WITH VACUUM CHECK. AIR RELEASE MANHOLE SHALL BE LISTED IN THE SHOULDER OR AS DIRECTED BY THE ENGINEER.
3. FOR MAINS LOCATED OUTSIDE OF STREET RIGHT-OF-WAYS THE MAXIMUM DISTANCE BETWEEN THE MANHOLE AND THE VALVE BOX SHOULD BE THREE (3) FEET.
4. MAIN SHALL BE DEEP ENOUGH TO ACCOMMODATE INSTALLATION AS SHOWN

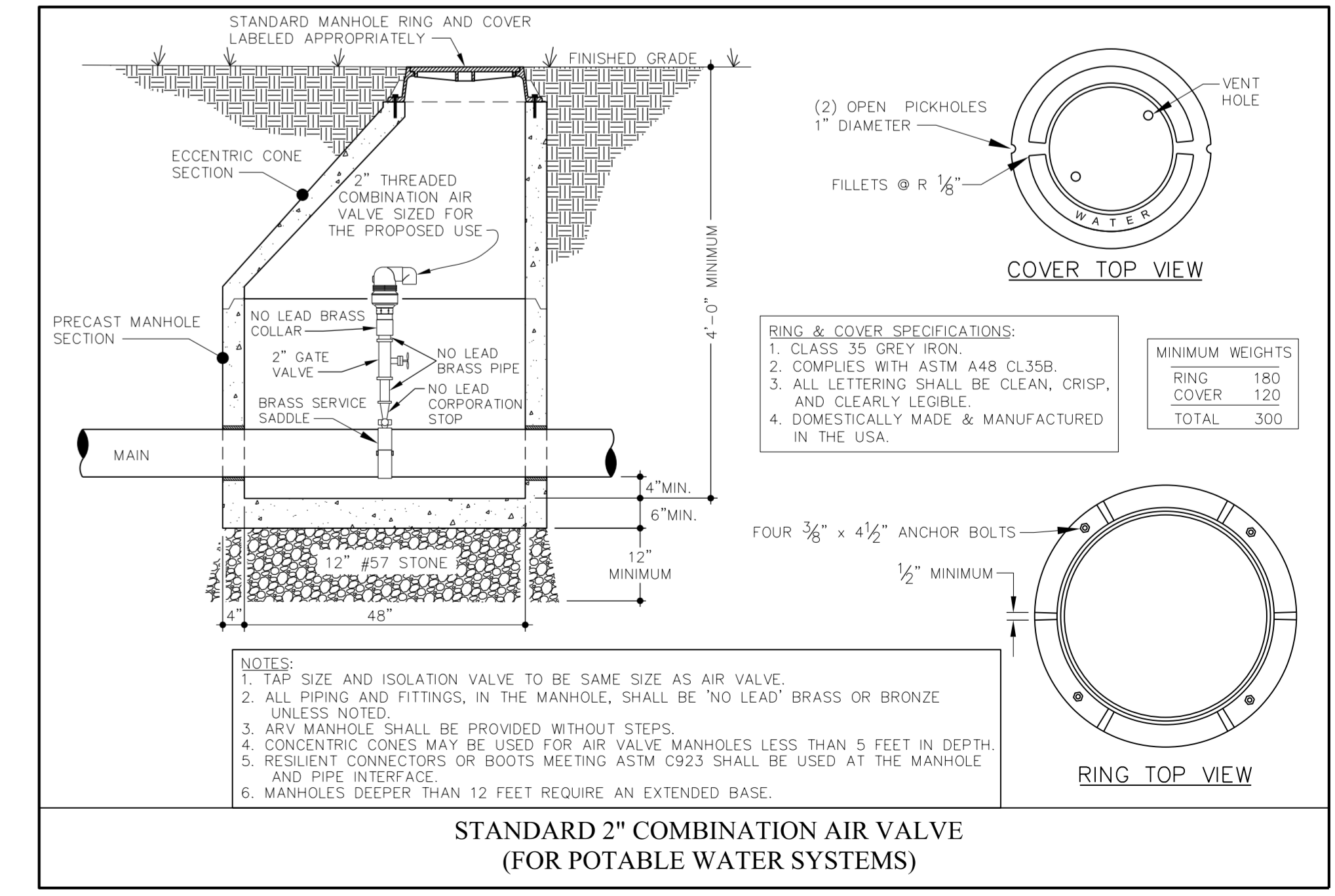
BILL OF MATERIALS	
1	PRECAST MANHOLE, SEE STANDARD DETAIL S-20
2	TRASH HOOD
3	2" AIR RELEASE VALVE
4	2" CURB STOP BALL VALVE
5	ADAPTER
6	2" MECHANICAL JOINT BRASS PIPE AND FITTINGS
7	2" TYPE 'K' SOFT COPPER WITH FLARED ELBOW
8	CORPORATION COCK
9	6" DIAMETER DRAIN
10	GROUT, 1/8" TO 1'-0" MIN. SLOPE TO DRAIN
11	PIPE CAP
12	2" GATE VALVE

OFFSET WATER AIR RELEASE VALVE



PRECAST CONCRETE SANITARY SEWER MANHOLE

SCALE: NTS



STANDARD 2" COMBINATION AIR VALVE (FOR POTABLE WATER SYSTEMS)