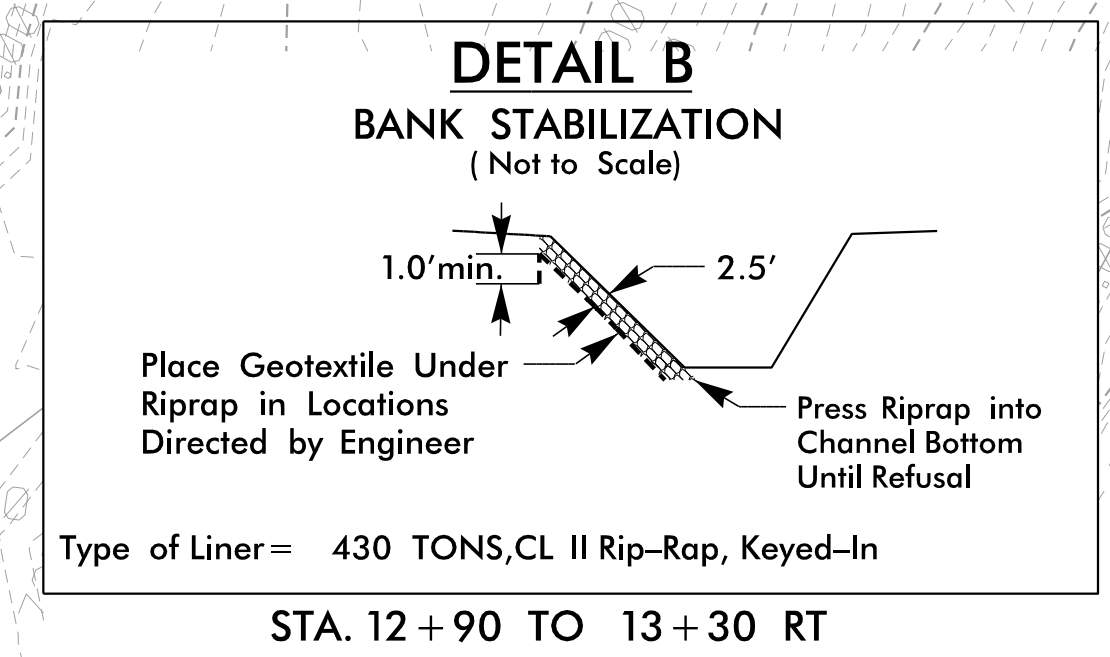
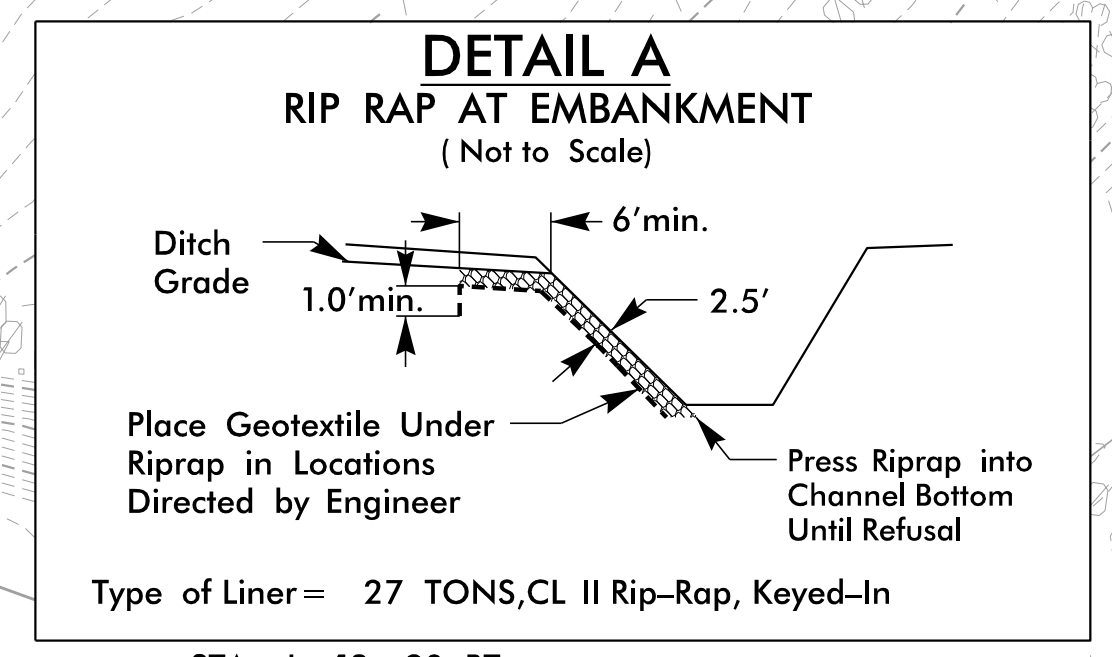


CLEARING AND GRUBBING
EROSION CONTROL FOR
CONSTRUCTION SHEET 4

NOTE:
PLACE TEMPORARY ROCK SEDIMENT DAMS TYPE - B
AND TEMPORARY ROCK SILT CHECKS TYPE - A AT
DRAINAGE OUTLETS.

**ENVIRONMENTALLY
SENSITIVE AREA
SEE PROJECT
SPECIAL PROVISIONS**

UTILIZE BEST MANAGEMENT PRACTICES FOR CONSTRUCTION AND MAINTENANCE
ACTIVITIES RELATED TO BRIDGE CONSTRUCTION AND BRIDGE DEMOLITION.
USE FLOATING TURBIDITY CURTAIN AND/OR IMPERVIOUS DIKE AS NEEDED
IN LOCATIONS DIRECTED BY THE ENGINEER.



HYDRAULIC DATA

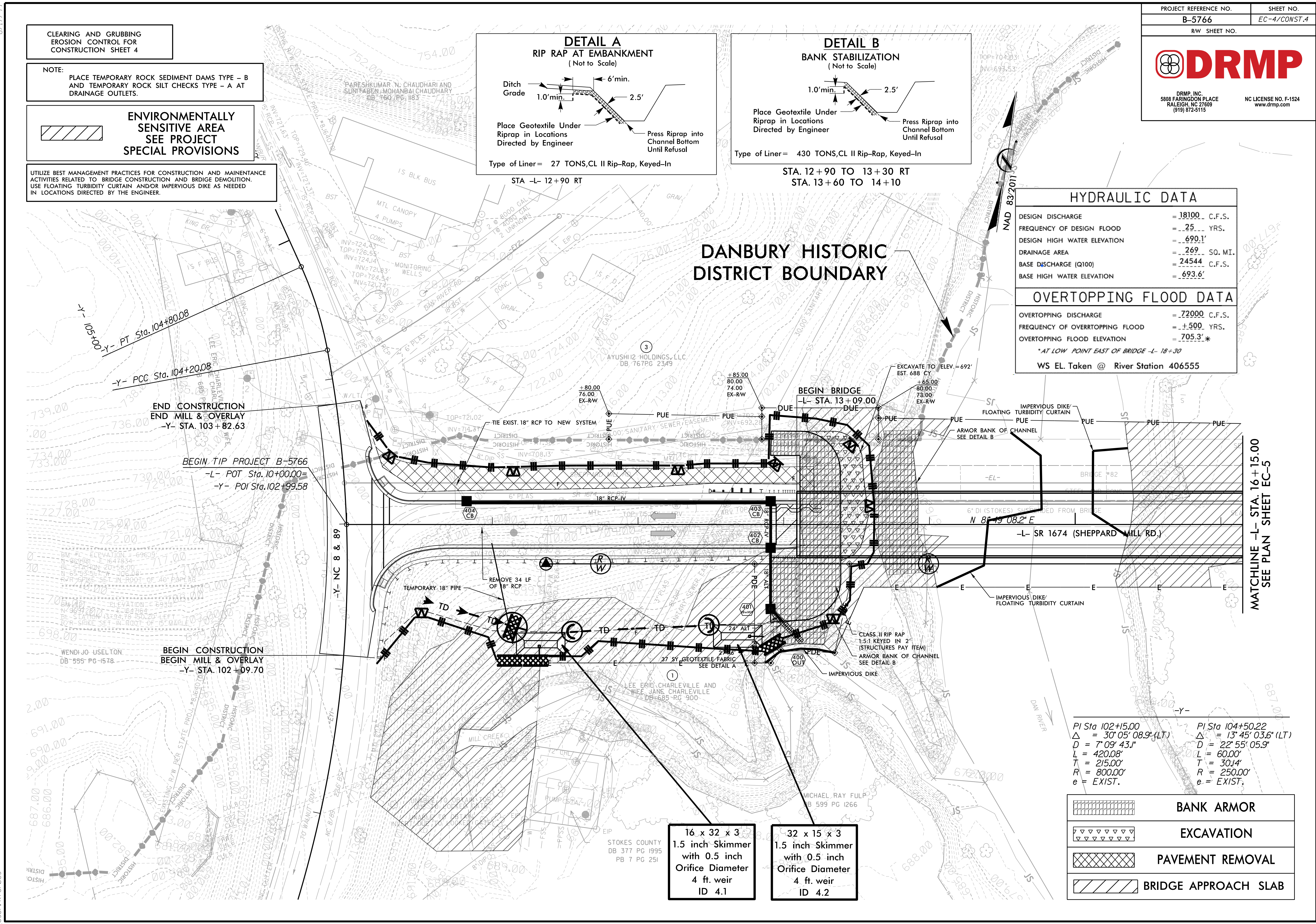
DESIGN DISCHARGE	= 18100 C.F.S.
FREQUENCY OF DESIGN FLOOD	= 25 YRS.
DESIGN HIGH WATER ELEVATION	= 690.1'
DRAINAGE AREA	= 269 SQ. MI.
BASE DISCHARGE (Q100)	= 24544 C.F.S.
BASE HIGH WATER ELEVATION	= 693.6'

OVERTOPPING FLOOD DATA

OVERTOPPING DISCHARGE	= 72000 C.F.S.
FREQUENCY OF OVERTOPPING FLOOD	= 500 YRS.
OVERTOPPING FLOOD ELEVATION	= 705.3'

* AT LOW POINT EAST OF BRIDGE -L- 18+30
WS EL. Taken @ River Station 406555

DANBURY HISTORIC DISTRICT BOUNDARY



END CONSTRUCTION
END MILL & OVERLAY
-Y- STA. 103+82.63

BEGIN TIP PROJECT B-5766
-L- POT Sta. 10+00.00
-Y- POI Sta. 102+99.58

BEGIN CONSTRUCTION
BEGIN MILL & OVERLAY
-Y- STA. 102+09.70

MATCHLINE -L- STA. 16+15.00
SEE PLAN SHEET EC-5

16 x 32 x 3
1.5 inch Skimmer
with 0.5 inch
Orifice Diameter
4 ft. weir
ID 4.1

32 x 15 x 3
1.5 inch Skimmer
with 0.5 inch
Orifice Diameter
4 ft. weir
ID 4.2

PI Sta 102+15.00 Δ = 30° 05' 08.9" (LT) D = 7' 09' 43.1" L = 420.08' T = 215.00' R = 800.00' e = EXIST.	PI Sta 104+50.22 Δ = 13° 45' 03.6" (LT) D = 22' 55' 05.9" L = 60.00' T = 30.14' R = 250.00' e = EXIST.
---	--

	BANK ARMOR
	EXCAVATION
	PAVEMENT REMOVAL
	BRIDGE APPROACH SLAB

8.17.2024
 I:\B5766-EC-psh04-CG.dgn
 User: kforbes