

Location and Surveys

PROJECT SURVEYOR



DOCUMENT NOT CONSIDERED FINAL UNLESS ALL SIGNATURES COMPLETED

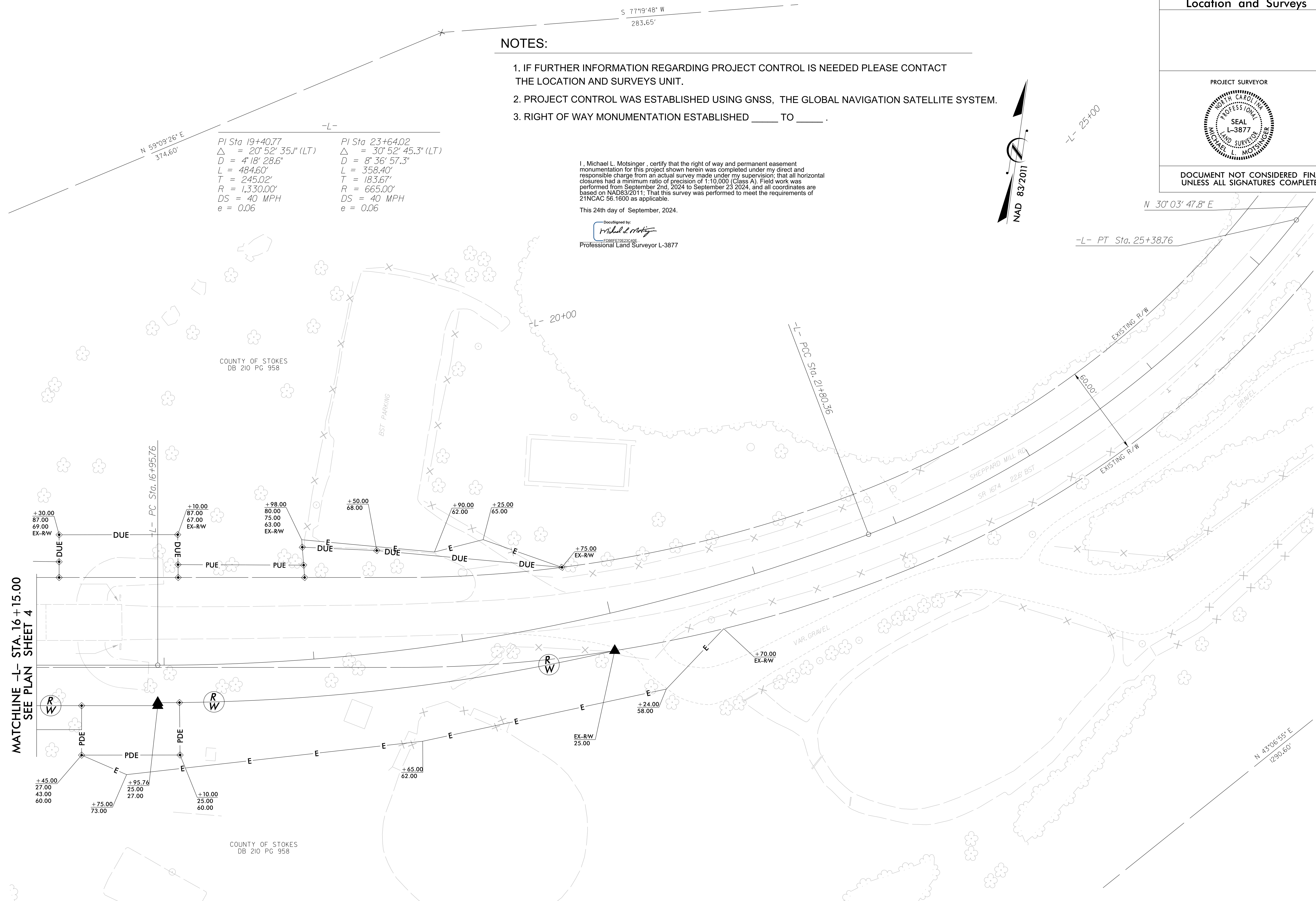
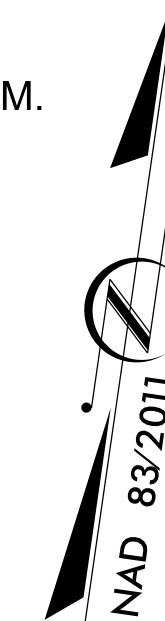
NOTES:

1. IF FURTHER INFORMATION REGARDING PROJECT CONTROL IS NEEDED PLEASE CONTACT THE LOCATION AND SURVEYS UNIT.
2. PROJECT CONTROL WAS ESTABLISHED USING GNSS, THE GLOBAL NAVIGATION SATELLITE SYSTEM.
3. RIGHT OF WAY MONUMENTATION ESTABLISHED \_\_\_\_ TO \_\_\_\_.

I, Michael L. Molsinger, certify that the right of way and permanent easement monumentation for this project shown herein was completed under my direct and responsible charge from an actual survey made under my supervision; that all horizontal closures had a minimum ratio of precision of 1:10,000 (Class A). Field work was performed from September 2nd, 2024 to September 23, 2024, and all coordinates are based on NAD83/2011; That this survey was performed to meet the requirements of 21NCAC 58.1600 as applicable.

This 24th day of September, 2024.

DocuSigned by:  
  
 Professional Land Surveyor L-3877



PI Sta 19+40.77 $\Delta = 20^\circ 52' 35.1''$ (LT) $D = 4' 18.286''$ $L = 484.60'$ $T = 245.02'$ $R = 1,330.00'$ $DS = 40$ MPH $e = 0.06$	PI Sta 23+64.02 $\Delta = 30^\circ 52' 45.3''$ (LT) $D = 8' 36.573''$ $L = 358.40'$ $T = 183.67'$ $R = 665.00'$ $DS = 40$ MPH $e = 0.06$
---	---

REVISIONS

MATCHLINE -L- STA. 16+15.00  
SEE PLAN SHEET 4

P:\SEP-2024\1018 B5766\Right of Way\to be checked\B5766.L.S.-rw05.dgn  
 M.L.Molsinger