

5/14/99

-L- SR 1674 (SHEPPARD MILL ROAD)

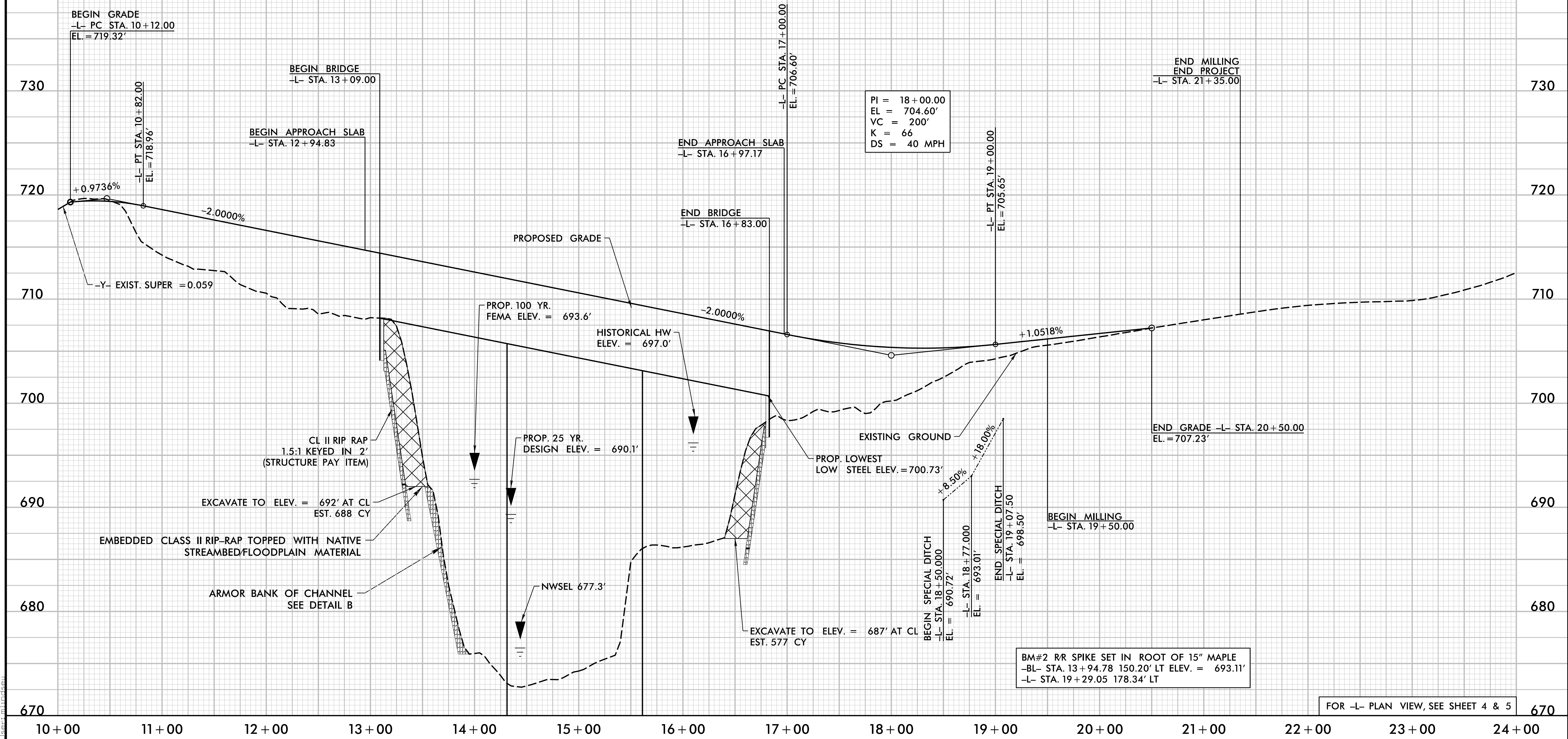


PROJECT REFERENCE NO. <b>B-5766</b>	SHEET NO. <b>6</b>
ROADWAY DESIGN ENGINEER <i>Kyle M. Kelle</i> Professional Seal 050515 1/7/2025	HYDRAULICS ENGINEER <i>Forest N. Brooks</i> Professional Seal 55416 1/7/2025
<b>DOCUMENT NOT CONSIDERED FINAL UNLESS ALL SIGNATURES COMPLETED</b>	

BRIDGE HYDRAULIC DATA	
DESIGN DISCHARGE	= 18,100 CFS
DESIGN FREQUENCY	= 25 YRS
DESIGN HW ELEVATION	= 690.1'
DRAINAGE AREA	= 269 SQ MI
BASE DISCHARGE (Q100)	= 24,544 CFS
BASE HW ELEVATION	= 693.6'
OVERTOPPING DISCHARGE	= 72,000 CFS
OVERTOPPING FREQUENCY	= +500 YRS
OVERTOPPING ELEVATION	= 705.3'
*AT LOW POINT EAST OF BRIDGE -L- 18+30	

PI = 10+47.00  
 EL = 719.66'  
 VC = 70'  
 K = 24  
 DS = 30 MPH

PI = 18+00.00  
 EL = 704.60'  
 VC = 200'  
 K = 66  
 DS = 40 MPH



BM#2 R/R SPIKE SET IN ROOT OF 15" MAPLE  
 -BL- STA. 13+94.78 150.20' LT ELEV. = 693.11'  
 -L- STA. 19+29.05 178.34' LT

1/7/2025 B5766\_P01.dwg