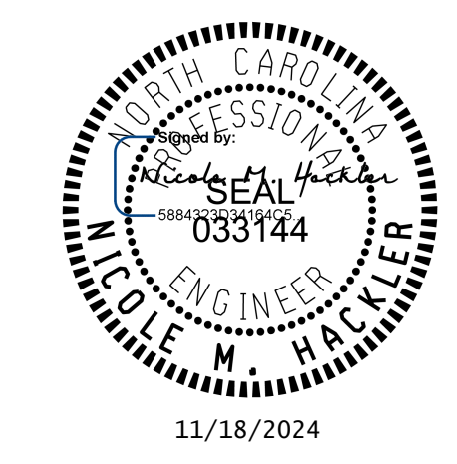


USE FLARE RATE AS THE CONTROL IF THE "N₁" DISTANCE IS NOT OBTAINED.
 ("N₁" IS BASED ON SHOULDER WIDTHS IN THE ROADWAY DESIGN MANUAL)
 SEE STD. 862.03 FOR STRUCTURE ANCHOR UNITS
 FOR POSTED SPEEDS ≥ 45MPH USE GREU TYPE TL-3
 FOR POSTED SPEEDS < 45MPH USE GREU TYPE TL-2
 GUARDRAIL LENGTH OF NEED (X) IS CALCULATED BASED ON THE AASHTO ROADSIDE DESIGN GUIDE.

LENGTHS AND OFFSETS FOR PROPOSED GUARDRAIL AT TWO LANE - TWO WAY LOCATIONS

STATE OF
 NORTH CAROLINA
 DEPT. OF TRANSPORTATION
 DIVISION OF HIGHWAYS
 RALEIGH, N.C.

ROADWAY DETAIL DRAWING FOR
GUARDRAIL PLACEMENT



SHEET 4 OF 15
862D01

DOCUMENT NOT CONSIDERED FINAL
 UNLESS ALL SIGNATURES COMPLETED

**CONTRACTS STANDARDS
 AND DEVELOPMENT UNIT**
 Office 919-707-6950 FAX 919-250-4119

SEE TITLE BLOCK

ORIGINAL BY: S.CALHOUN DATE: 7-25-2024
 MODIFIED BY: _____ DATE: _____
 CHECKED BY: _____ DATE: _____
 FILE SPEC.: _____