



STATE OF NORTH CAROLINA
DEPARTMENT OF TRANSPORTATION

ROY COOPER
GOVERNOR

J. ERIC BOYETTE
SECRETARY

July 14, 2021

MEMORANDUM TO: David Stutts, PE
Project Engineer
Structures Management Unit

FROM: Craig Haden
GeoEnvironmental Project Manager
GeoEnvironmental Section
Geotechnical Engineering Unit

TIP NO: BR-0100
WBS: 67100.1.1
COUNTY: RUTHERFORD
DIVISION: 13
DESCRIPTION: Replace Bridge # 800040 on NC 226 over N Fork First Broad Creek

SUBJECT: **Pre-Scoping Comments**

DocuSigned by:
Craig Haden

AE4AE3FF131F404...

The GeoEnvironmental Section performed a records search of readily available information for the given project study area to identify known and potential sites of concern. No sites of concern were identified within the project area. If the project limit changes, please let us know, so we can reevaluate the study area.

cc:
John Pilipchuk, LG, PE, State Geotechnical Engineer
Brian Hanks, PE, State Structures Engineer
Brent Hall, Locations and Surveys
Byron Sanders, Jr., PE, State Utilities Manager
Randy McKinney, PE, Division Construction Engineer
Robert Haskett, Division Right of Way Agent
Eric Williams, PE, Geotechnical Regional Manager
Jody Kuhne, LG, PE Regional Geological Engineer
Neil Strickland, State Negotiator
Katharine Mather, AICP, Consultant Planning Lead, WSP
row-notify@ncdot.gov
roadwaydesign@ncdot.gov
hydraulics_notify@ncdot.gov

File

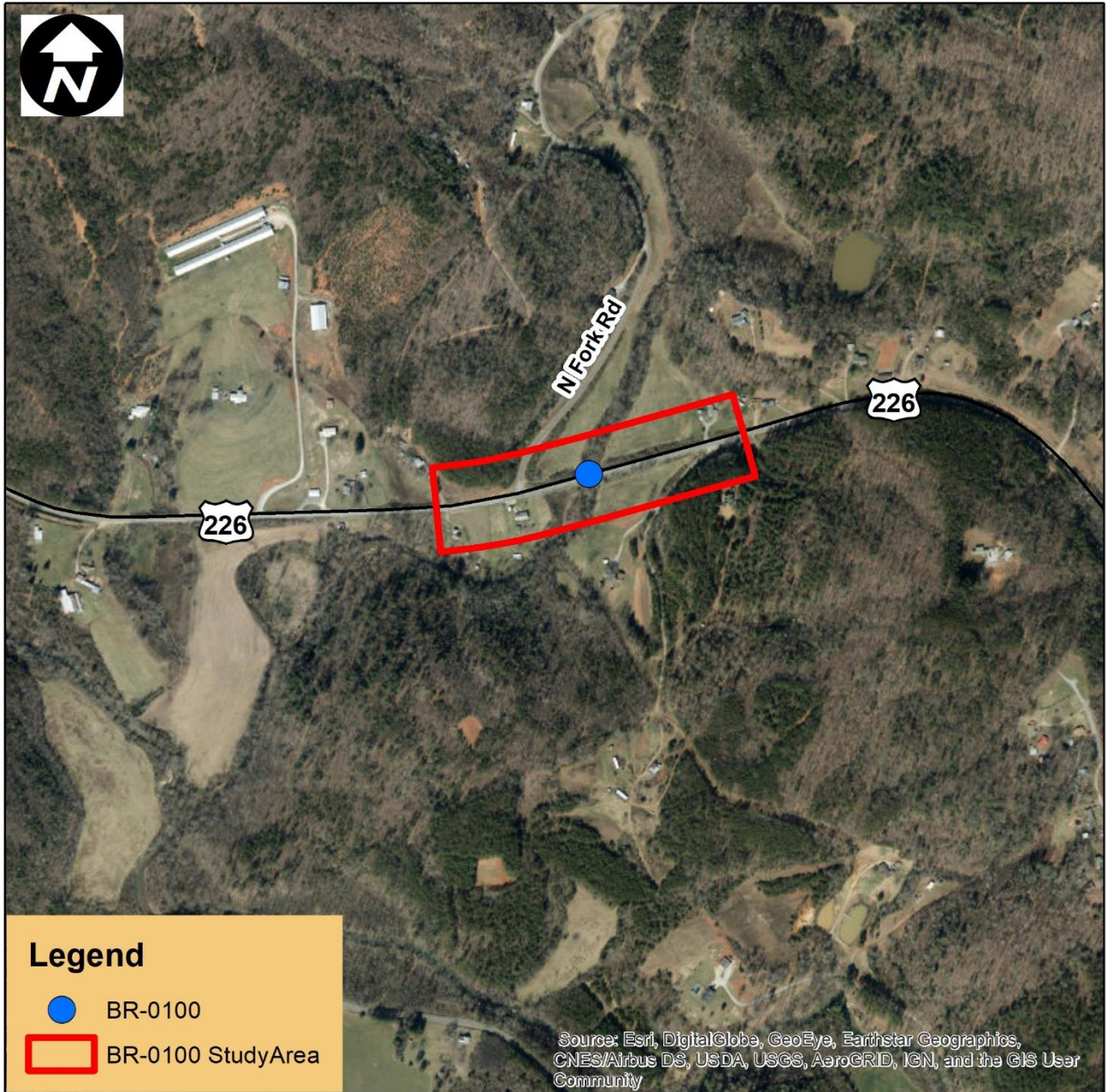
Mailing Address:
NC DEPARTMENT OF TRANSPORTATION
GEOTECHNICAL ENGINEERING UNIT
1589 MAIL SERVICE CENTER
RALEIGH NC 27699-1589

Telephone: 919-707-6850
Fax: 919-250-4237
Customer Service: 1-877-368-4968

Website: www.ncdot.gov

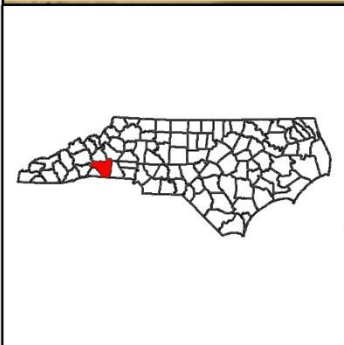
Location:
CENTURY CENTER COMPLEX
ENTRANCE B-2
1020 BIRCH RIDGE DRIVE
RALEIGH NC

Appendix A Location of GeoEnvironmental Sites of Concern



Legend

- BR-0100
- ▭ BR-0100 Study Area



Project 67100.1.1 (TIP # BR-0100)
Bridge # 800040 on NC 226 over
N Fork First Broad Creek
Rutherford County

500 250 0 500 Feet

NC Department of Transportation
Geotechnical Engineering Unit
GeoEnvironmental Section

