



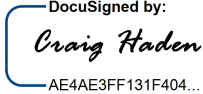
STATE OF NORTH CAROLINA  
DEPARTMENT OF TRANSPORTATION

ROY COOPER  
GOVERNOR

J. ERIC BOYETTE  
SECRETARY

July 14, 2021

MEMORANDUM TO: David Stutts, PE  
Project Engineer  
Structures Management Unit

FROM: Craig Haden   
GeoEnvironmental Project Manager  
GeoEnvironmental Section  
Geotechnical Engineering Unit

TIP NO: BR-0100  
WBS: 67100.1.1  
COUNTY: RUTHERFORD  
DIVISION: 13  
DESCRIPTION: Replace Bridge # 800040 on NC 226 over N Fork First Broad Creek

SUBJECT: **Pre-Scoping Comments**

The GeoEnvironmental Section performed a records search of readily available information for the given project study area to identify known and potential sites of concern. No sites of concern were identified within the project area. If the project limit changes, please let us know, so we can reevaluate the study area.

cc:  
John Pilipchuk, LG, PE, State Geotechnical Engineer  
Brian Hanks, PE, State Structures Engineer  
Brent Hall, Locations and Surveys  
Byron Sanders, Jr., PE, State Utilities Manager  
Randy McKinney, PE, Division Construction Engineer  
Robert Haskett, Division Right of Way Agent  
Eric Williams, PE, Geotechnical Regional Manager  
Jody Kuhne, LG, PE Regional Geological Engineer  
Neil Strickland, State Negotiator  
Katharine Mather, AICP, Consultant Planning Lead, WSP  
[row-notify@ncdot.gov](mailto:row-notify@ncdot.gov)  
[roadwaydesign@ncdot.gov](mailto:roadwaydesign@ncdot.gov)  
[hydraulics\\_notify@ncdot.gov](mailto:hydraulics_notify@ncdot.gov)

File

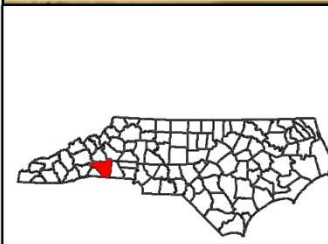
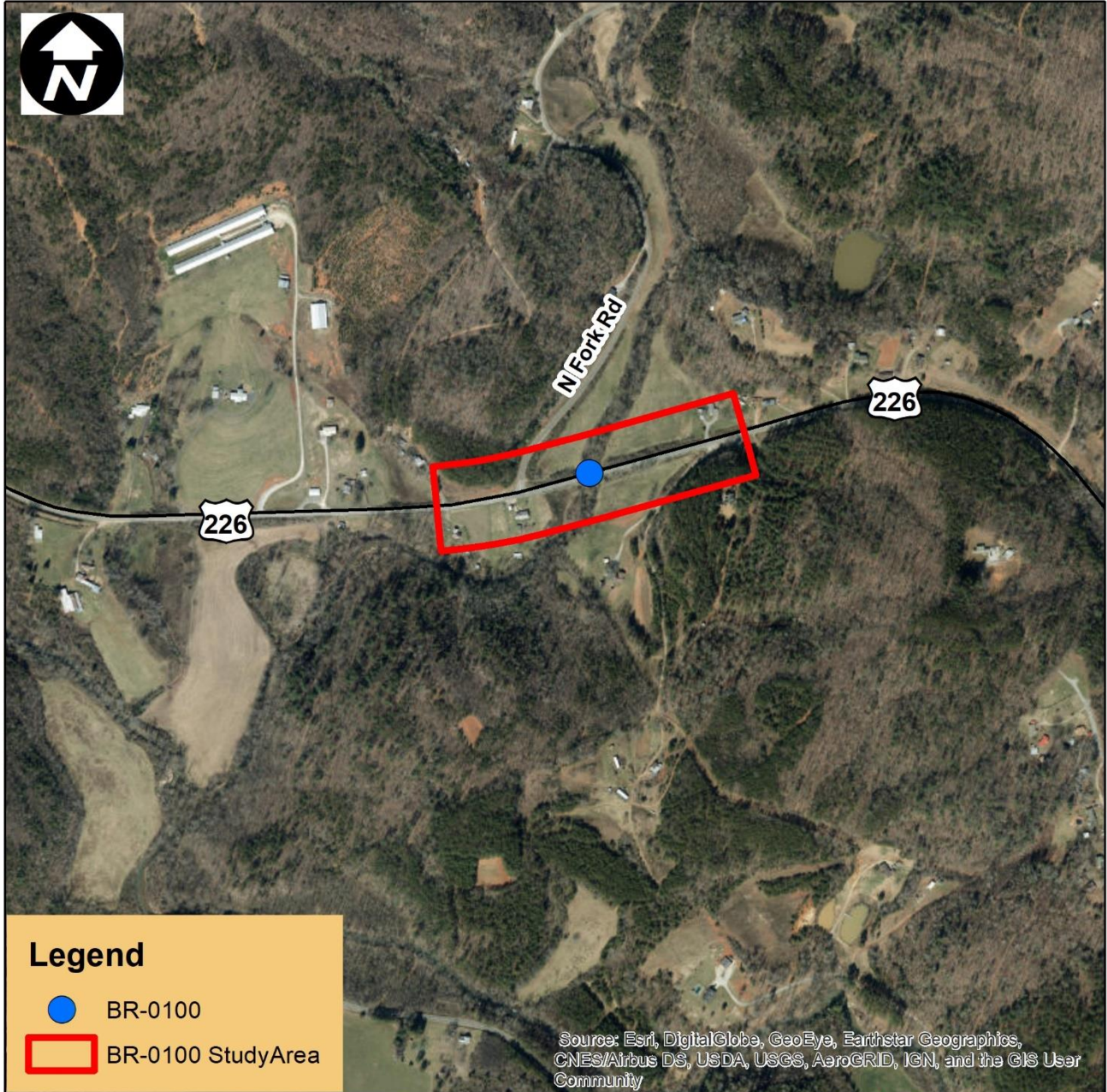
Mailing Address:  
NC DEPARTMENT OF TRANSPORTATION  
GEOTECHNICAL ENGINEERING UNIT  
1589 MAIL SERVICE CENTER  
RALEIGH NC 27699-1589

Telephone: 919-707-6850  
Fax: 919-250-4237  
Customer Service: 1-877-368-4968

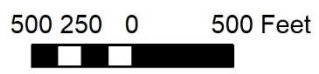
Website: [www.ncdot.gov](http://www.ncdot.gov)

Location:  
CENTURY CENTER COMPLEX  
ENTRANCE B-2  
1020 BIRCH RIDGE DRIVE  
RALEIGH NC

### Appendix A Location of GeoEnvironmental Sites of Concern



Project 67100.1.1 (TIP # BR-0100)  
Bridge # 800040 on NC 226 over  
N Fork First Broad Creek  
Rutherford County



NC Department of Transportation  
Geotechnical Engineering Unit  
GeoEnvironmental Section

